

Your park, your opportunity  
Come and help shape the future of  
Sydney Park

Saturday 10 March 2007  
11.00am to 1.00pm



The City of Sydney invites you to a community meeting to help develop the design for a playground and upgrade of the north-west end of Sydney Park.

FREE lunch, kite flying, guided tours of the site and a gift for every dog.

Sydney Park Village Green  
Cnr Sydney Park Road and Princes Hwy, St Peters

**Accessible transport available. Please call 9246 7509.**

*city of villages*



**I invite you to contribute to design development for the next stage of works for Sydney Park.**

On Saturday 10 March, City Councillors and staff will meet with you to discuss the north western section of the park. This is an opportunity to provide input into the designs for the All-Abilities Playground and the upgrade of the Village Green.

As part of our vision to green the city, this \$5.9 million upgrade to Sydney Park adds to the \$9.4 million spent since 1998 on creating this new regional park. The works will improve landscaping and provide wider recreation opportunities for the growing number of park users.

This is your chance to provide input into a unique playground for all children. I encourage you to attend this community meeting on 10 March at 11.00am.



**Clover Moore MP**  
Lord Mayor of Sydney

**PROJECT TIMELINE**

Detailed Master Plan adopted by Council – March 2006

**Community Consultation – 10 March 2007**

DA submission – March 2007

Wetland 5 to be completed – April 2007

Construction commences on early works – Late May 2007

Construction commences on main works – September 2007

**SYDNEY PARK HISTORY**

Sydney Park is the largest park in the City of Sydney.

Since Council took possession of the site from the State Government in 1991, it has undergone major transformations.

The City has turned the former landfill site into sustainable wetlands and parkland.

This reinforces the City's commitment to sustainable environments and open, green space.

The detailed Master Plan builds on the Plan of Management and establishes a vision for further improvements.

The City of Sydney is currently upgrading Wetland number 5, to be completed in April 2007.

**PROJECT OVERVIEW**

Due to the size of Sydney Park, the upgrade is being completed in co-ordinated stages. The works for this stage focus on the north-west section and include:

- development of an All-Abilities Playground
- an upgrade to the Village Green, including mounding to provide flexible amphitheatre spaces, shade plants and new grass
- an upgrade to Wetland 1 and gully area, including new wetland plants and boardwalk bridge from gully to lower parkland

In addition, park-wide elements such as path upgrades and park lighting along popular access routes will be included in this stage.

**COMMUNITY MEETING**

- free lunch
- take a guided tour of the site
- participate in a kite flying demonstration
- free gift for your dog
- parking provided on site with accessible pathways.

Saturday 10 March 2007  
11.00am to 1.00pm

Sydney Park Village Green  
Sydney Park Road, St Peters

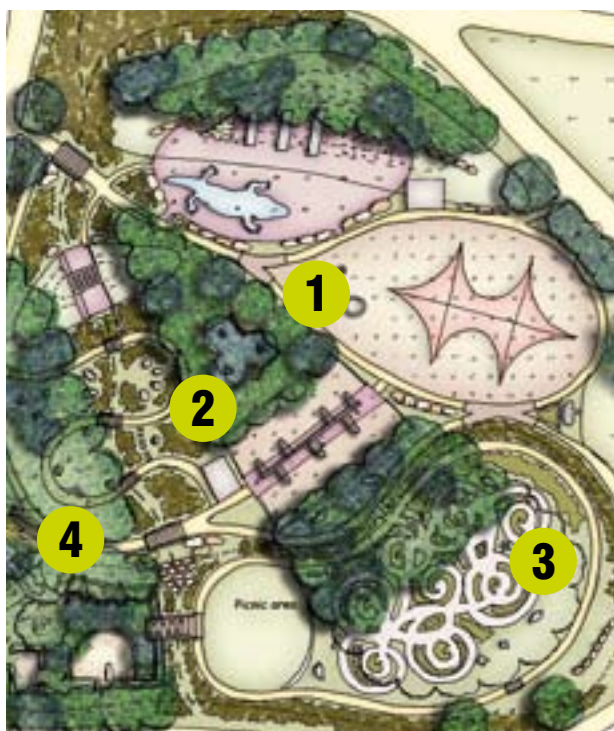
**MORE INFORMATION**

More information is available at [www.cityofsydney.nsw.gov.au](http://www.cityofsydney.nsw.gov.au) or contact:

Damon La'Rance  
Project Manager  
Phone 9246 7767  
[dlarance@cityofsydney.nsw.gov.au](mailto:dlarance@cityofsydney.nsw.gov.au)



Hearing loop and Auslan interpreter provided. If you require assistance participating, please contact Lyn Black on 9246 7509.



**All-Abilities Playground**

A playground that will delight children of all ages and abilities, including those in wheelchairs and with hearing and sight impairments.

- 1 Slides, swings and climbing net area.
- 2 Discovery walk and stone and timber bridges through native plants.
- 3 Brick-paved maze with moving bridges, sound elements and feature plants.
- 4 Sand and clay pits with a time-flow water feature.