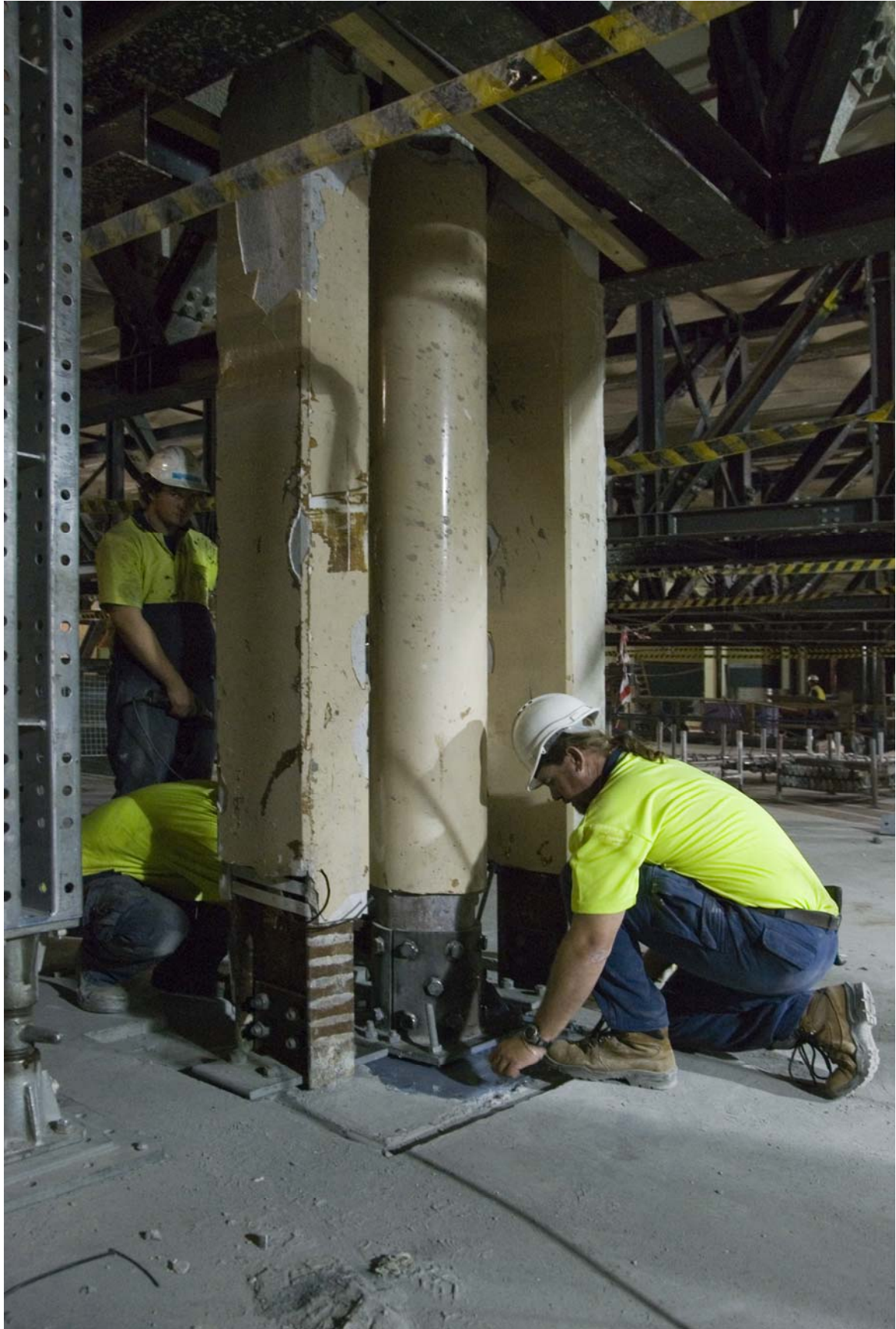


ATTACHMENT B

ATTACHMENT B

**PHOTOS OF SYDNEY TOWN HALL –
MARCH 2009**



Reinstallation of Heritage Columns

ATTACHMENT B



Installed Air Handling Unit for the new smoke systems



Post Tensioning of New Ground Floor Slab

ATTACHMENT B



Ground Floor looking east – note part removal of temporary truss

ATTACHMENT B



Installation of loading dock to basement tunnel



New electrical main switchboard installed in basement



Break-through of southern tunnel