

ATTACHMENT A

ATTACHMENT A

PROPOSED DRAWINGS

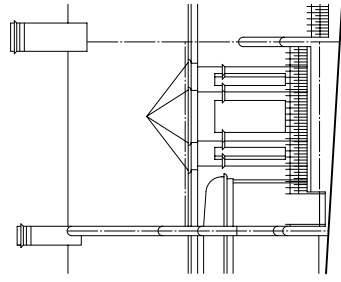
11 BELLEVUE STREET GLEBE

ATTACHMENT A

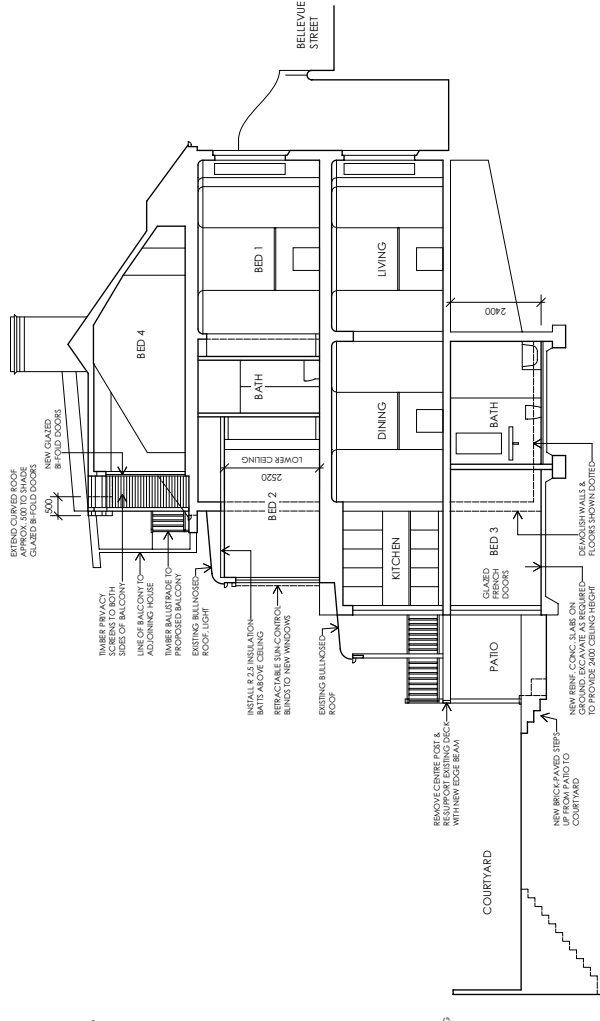
11 BELLEVUE STREET, GLEBE
PROPOSED ALTERATIONS & ADDITIONS
 ELEVATIONS & SECTION

SCALE 1:100
 DATE OCTOBER 2009
 GRAHAM LENNELL PTY LTD ACN 001 740 076
 SUITE 102, 88 FOYEAUX STREET, SURRY HILLS NSW 2010
 TEL 9212 2426 FAX 9212 2404 MOB 0412 402 255
 EMAIL lennell@plumtree.com.au

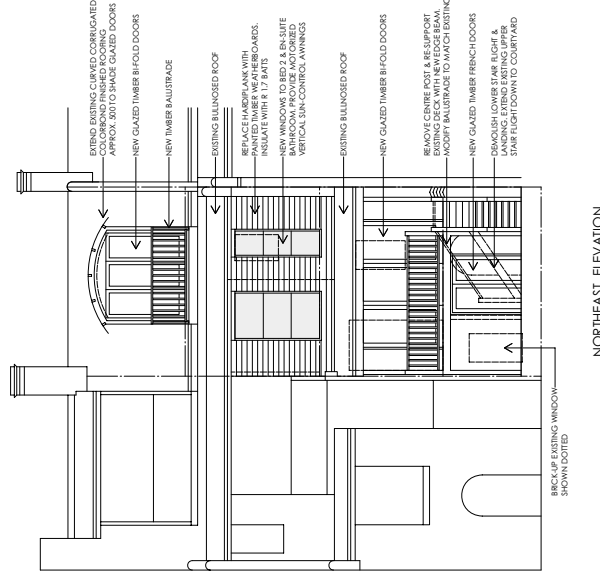
DRAWING NO. 2



SOUTHWEST ELEVATION
 (BELLEVUE STREET) - AS EXISTING



SECTION 1-1



NORTHEAST ELEVATION