

This exhibition presents a developed concept design for Fitzroy Gardens and a set of design ideas for Lawrence Hargrave Reserve. We are inviting comment from the community to inform the progress of these two projects, which will be developed in stages.

Please take the time to view the exhibition and complete a feedback form.

What you told us

The feedback from community workshops in the second half of 2008 has informed the development of these ideas.

Fitzroy Gardens

- A valued place in need of refurbishment
- Protect the special character
- Maintain the markets
- Improve the playground

Lawrence Hargrave Reserve

- Little known space, not often visited
- Unsafe, disconnected, furtive
- Has value as green open space
- Would like both parks better connected

Where to from here?

Fitzroy Gardens

This will be the first stage to be delivered and will include the improvements to the Police Building Façade, and Baroda Lane. The next steps are:

- Public Exhibition until 9th September
- Refine Concept Design
- Council Report to endorse Concept Design and Exhibit Draft Plan of Management
- Detailed Design and Public Exhibition
- Council Report to endorse final Design and Plan of Management
- Construction Documentation
- Tendering for construction
- Construction

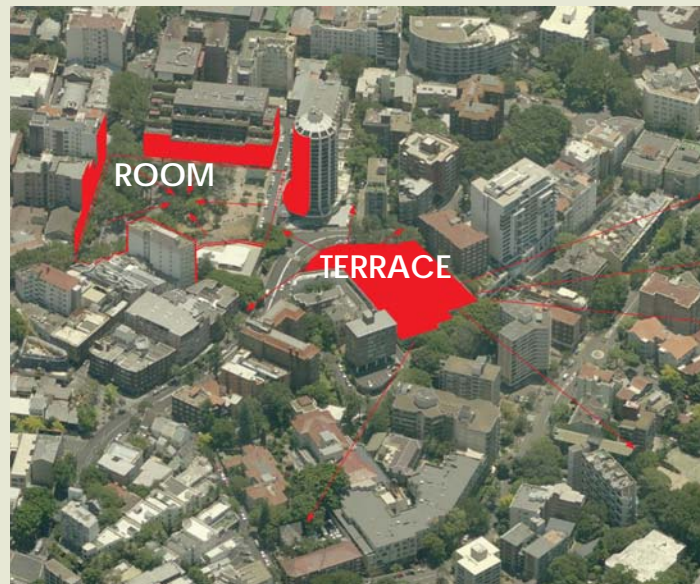
Lawrence Hargrave Reserve

This will be a future stage, and the next steps are:

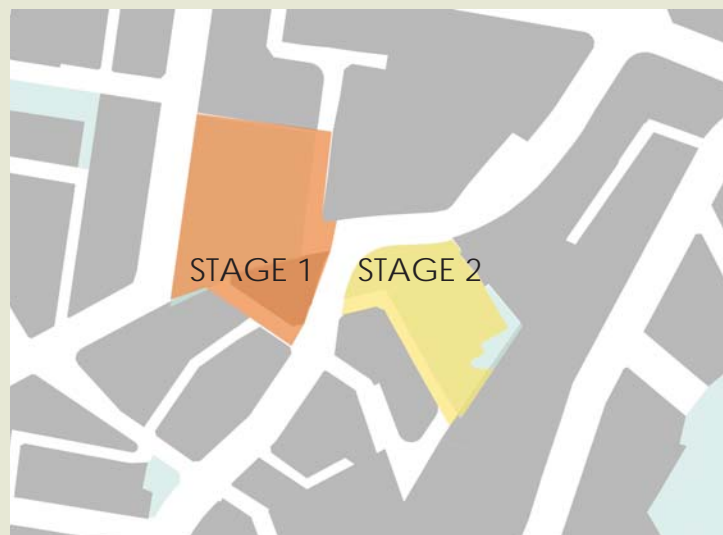
- Public Exhibition until 9th September
- Council Report to endorse Preparation of a Feasibility Study
- Subsequent stages to be scheduled post-feasibility



SITE LOCATION



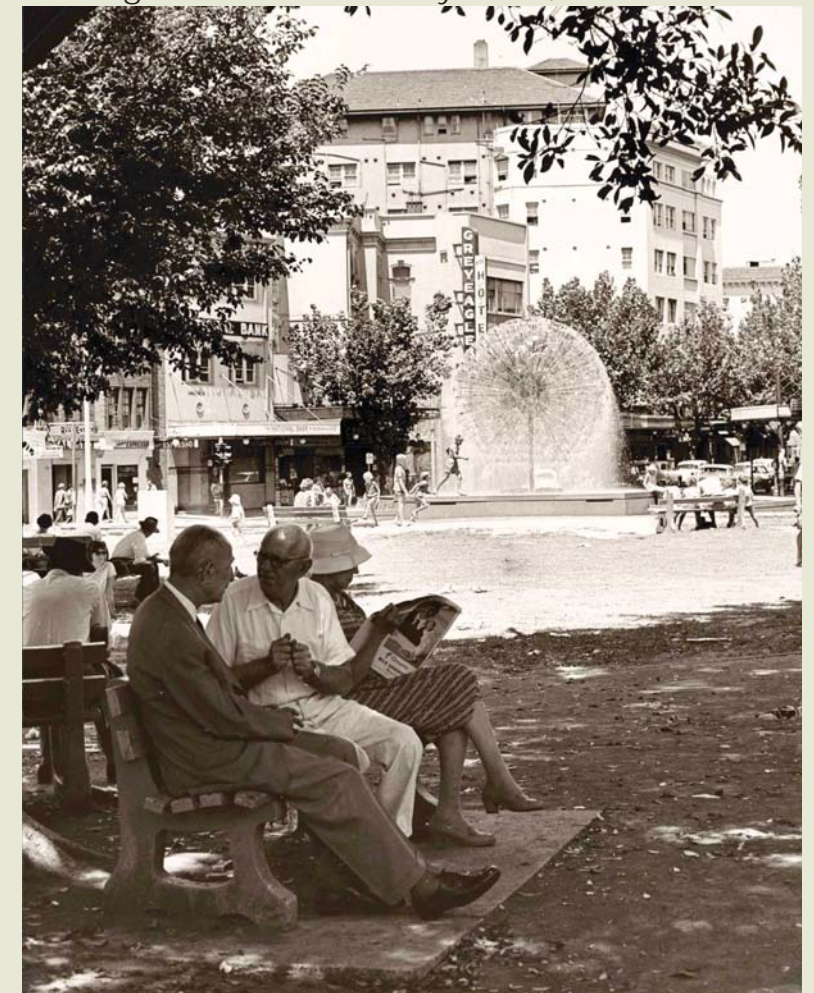
AERIAL PHOTOGRAPH



PROJECT STAGES



HISTORIC PHOTOGRAPH
Looking down Elizabeth Bay Road, circa 1968



HISTORIC PHOTOGRAPH
Fitzroy Gardens, circa 1970