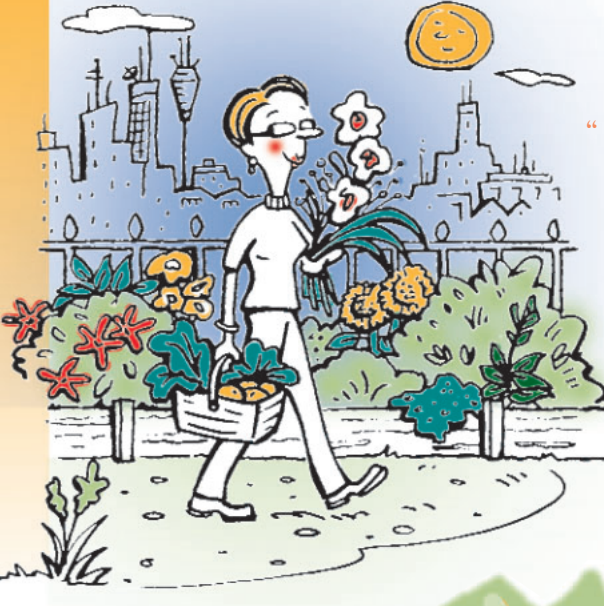




Find your oasis in the city

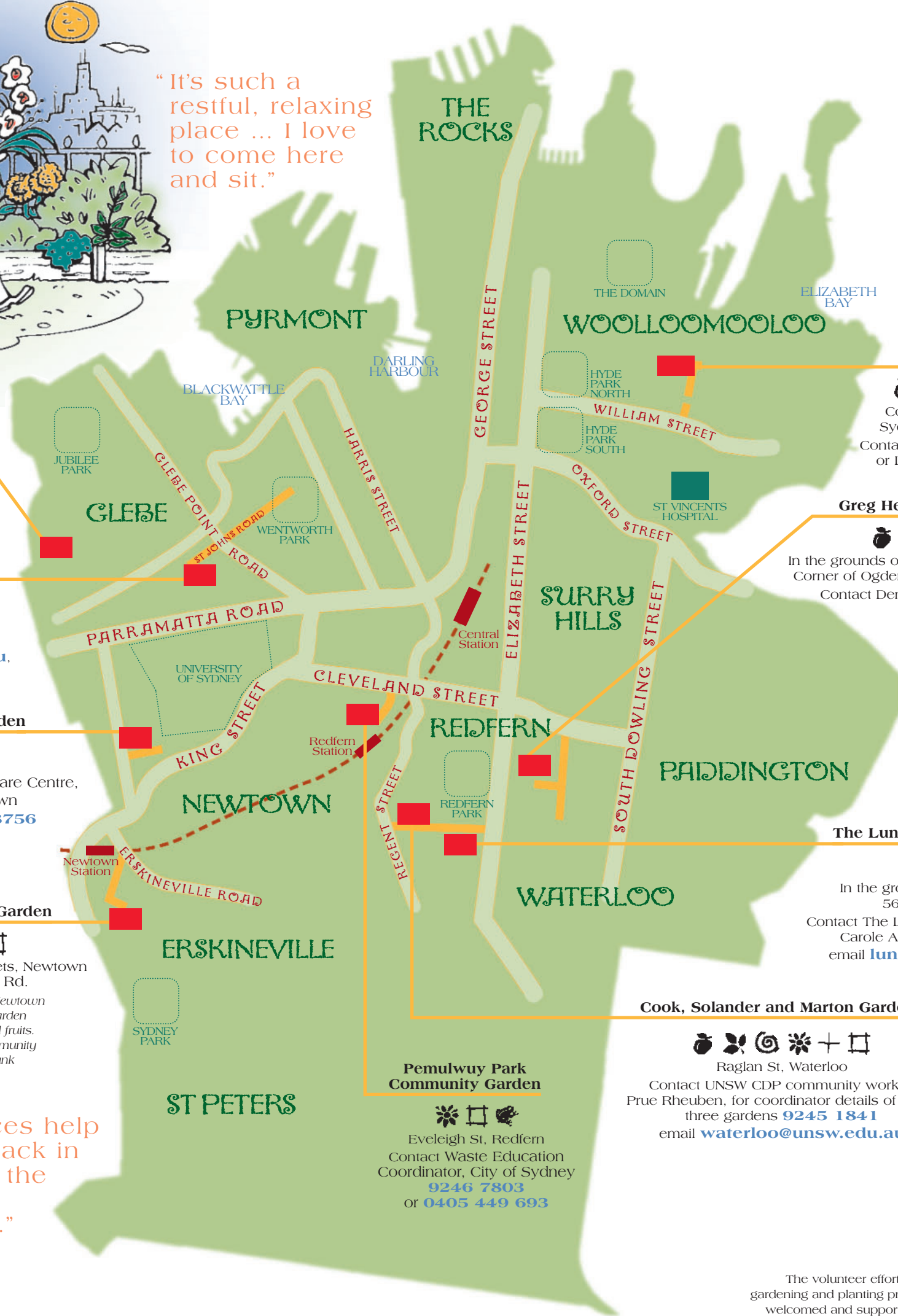


"It's such a restful, relaxing place ... I love to come here and sit."

"These places help us to get back in touch with the earth and each other."

How to get involved

- 1 Check the map to find a garden that suits you.
 - 2 Contact the coordinator to find out whether there is space for new participants and how to get involved.
 - 3 Come along during open times!
- Tools are often provided, but bring your gloves, hat and enclosed shoes.
 - Remember, coordinators are often volunteers, so don't give up if you don't contact them first go!



Rozelle Bay Community Nursery

Chapman Rd (rear of 3-7 The Crescent), Annandale
 Contact Beth Buchanan **9660 1304**
 email rozellebaynursery@yahoo.com.au
 web www.ramin.com.au/annandale/rbcnn.html

Glebe Community Garden

132 St Johns Road, Glebe
 (corner of Derwent Lane and St Johns Rd)
 email sapheredragon@hotmail.com.au,
 or Paul Angle **0410 317 999**

Newtown Community Garden

In the grounds of Jane Evans Day Care Centre,
 off Longdown St, Newtown
 Contact Lance Feeny **9699 8756**
 or **0418 688 924**
*Formerly street jungle —
 now coordinated through ACON*

Angel St Permaculture Garden

Corner of Angel and Harold Streets, Newtown
 Enter from Erskineville Rd.

*Angel St Permaculture garden, Newtown
 is a large, well-established garden
 that mainly produces perennial fruits.
 It also features large-scale community
 composting and a water tank*

Woolloomooloo

Corner of Dowling Street and
 Sydney Place, Woolloomooloo
 Contact Chris Ireland **9331 2689**,
 or Louise Evrad **9380 2313**

Greg Hewish Memorial Garden

In the grounds of St Saviours Anglican Church,
 Corner of Ogden and Marriot Streets, Redfern
 Contact Denny Powell **9698 1620**

The Luncheon Club Eden Garden

In the grounds of the Uniting Church,
 56A Raglan St, Waterloo
 Contact The Luncheon Club (TLC) Coordinator,
 Carole Anne King **0416 040 074**
 email luncheon@rainbow.net.au

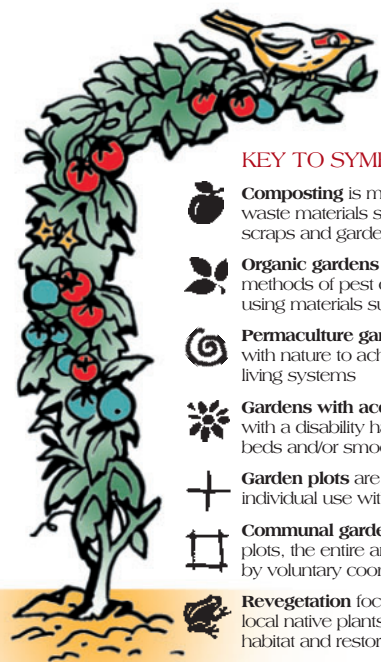
Cook, Solander and Marton Gardens

Raglan St, Waterloo
 Contact UNSW CDP community worker,
 Prue Rheuben, for coordinator details of these
 three gardens **9245 1841**
 email waterloo@unsw.edu.au

Pemulwuy Park Community Garden

Eveleigh St, Redfern
 Contact Waste Education
 Coordinator, City of Sydney
9246 7803
 or **0405 449 693**

"I don't have space to garden in my flat."



KEY TO SYMBOLS

- **Composting** is made from waste materials such as food scraps and garden clippings
- **Organic gardens** use only natural methods of pest control & fertilising using materials such as compost
- **Permaculture gardens** work with nature to achieve sustainable living systems
- **Gardens with access** for people with a disability have raised garden beds and/or smooth pathways
- **Garden plots** are areas for individual use within gardens
- **Communal gardens** have no plots, the entire area is planned by voluntary coordinators
- **Revegetation** focusses on planting local native plants to create habitat and restore ecosystems

The volunteer efforts in these gardening and planting projects are welcomed and supported by the City of Sydney Council

