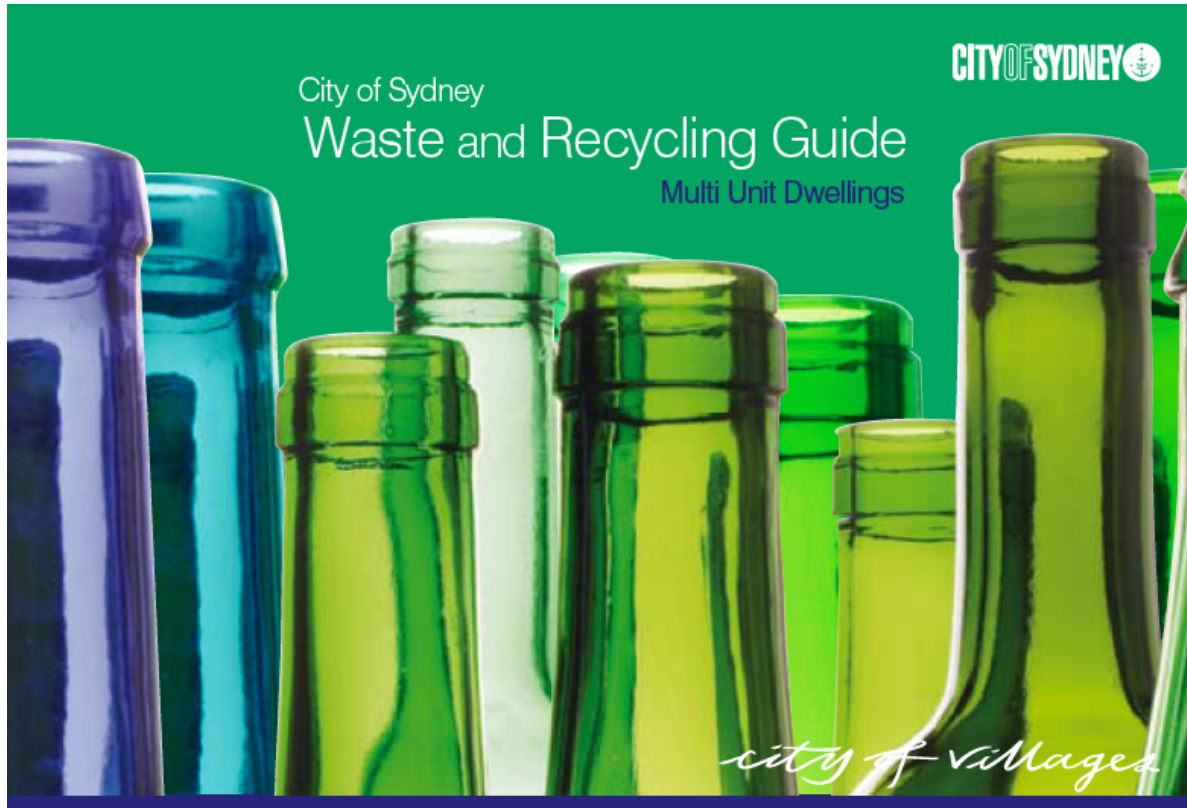




**Michael Neville**  
Senior Waste Education Coordinator  
**City of Sydney**





## A taste for waste...

- What is waste?
- Why is it a problem?
- Consumption, life-cycle & footprints
- What's in the bin
- City Services
- Issues with MUD's
- What we do for MUD's
- Questions and discussion



# Why waste?

climate change  
drought  
deforestation  
flood  
transport  
economy







# What is waste?

.... a state of mind...

...something only becomes waste when it is perceived as such...

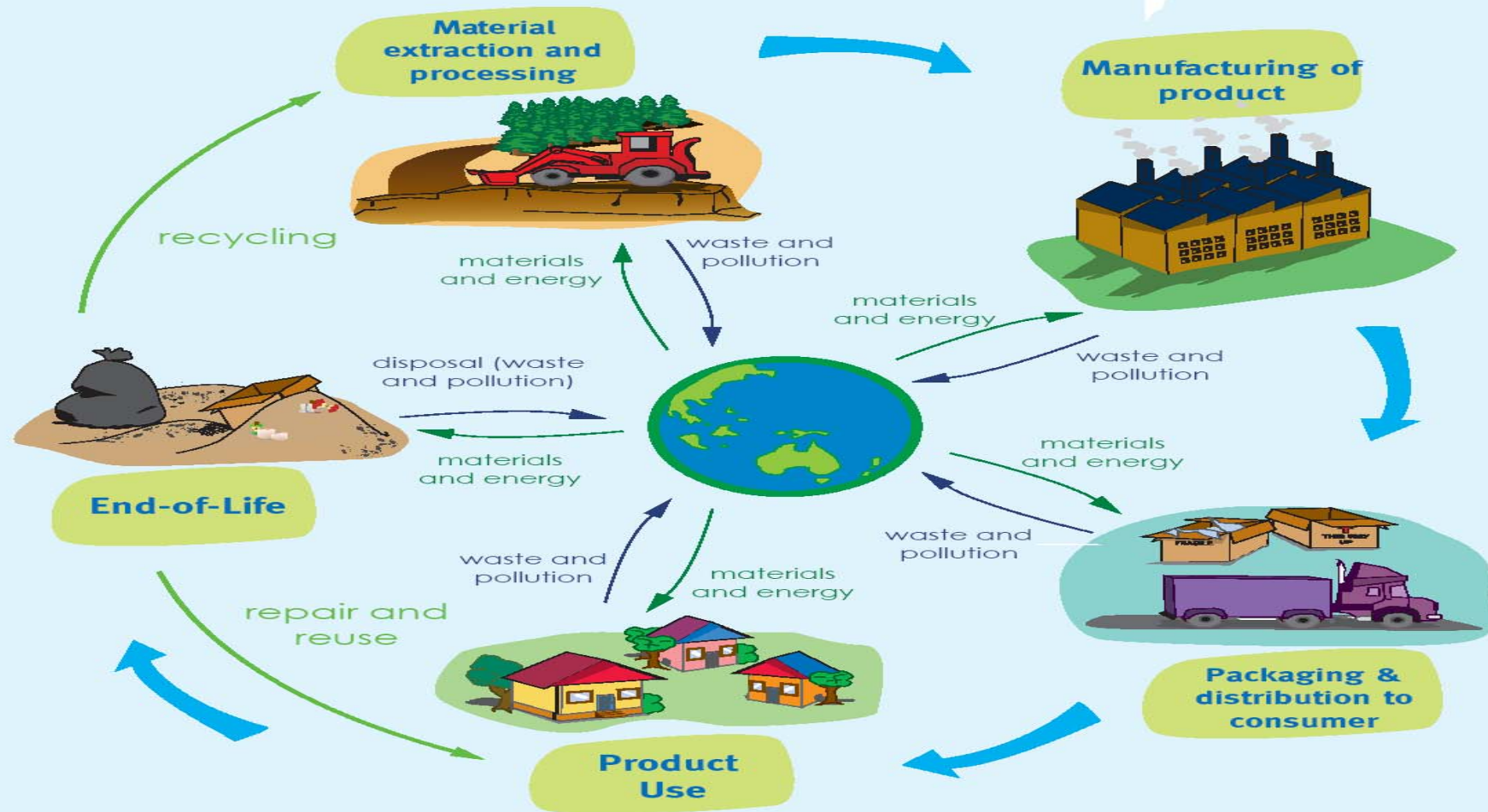
...the afterglow of consumption



## Why is it a problem?

The **production, consumption** and **disposal** of goods and materials impacts on **society**, the **economy** and the **environment** at every stage of the **life cycle** of a product, from sourcing natural resources to its eventual recycling or disposal.

# Product Life Cycle





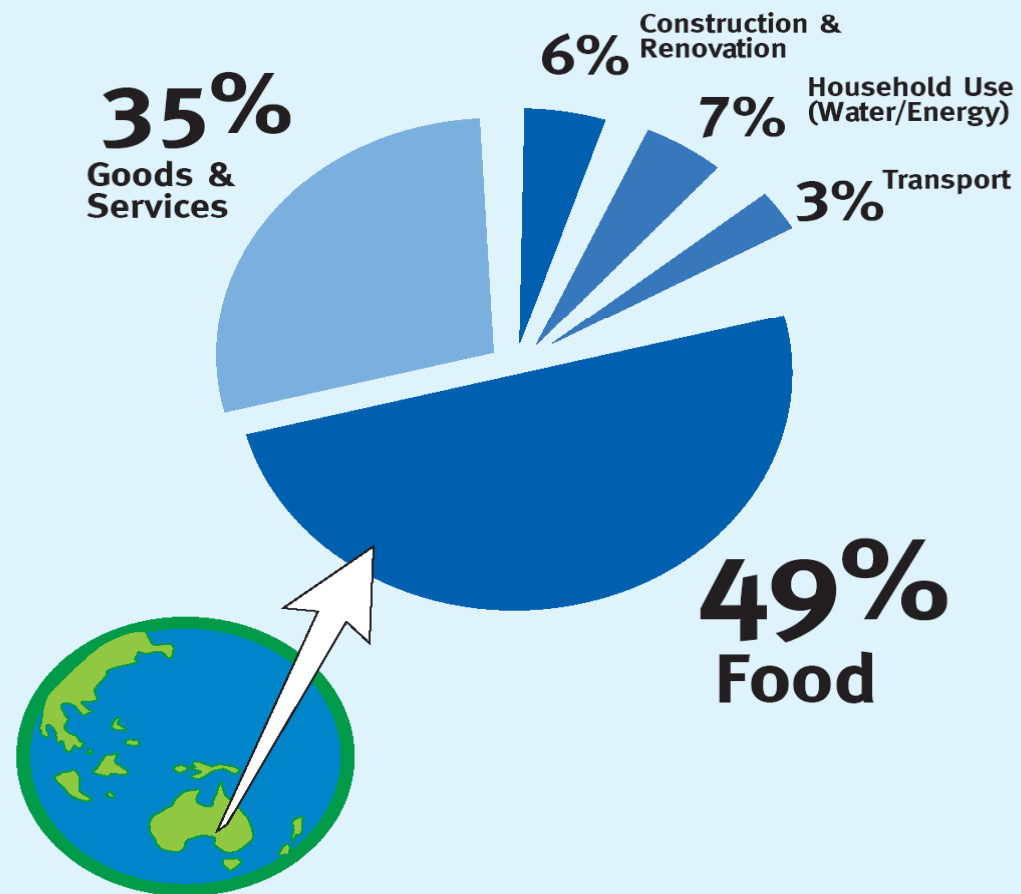
## In 2004 Australians threw away

\$5.3 billion of food!!!

- \$2.9 billion of fresh food
- \$630 million of uneaten take away food
- \$876 million of leftovers
- \$596 of unfinished drinks
- \$241 million of frozen food

(Aust. Institute 2005)

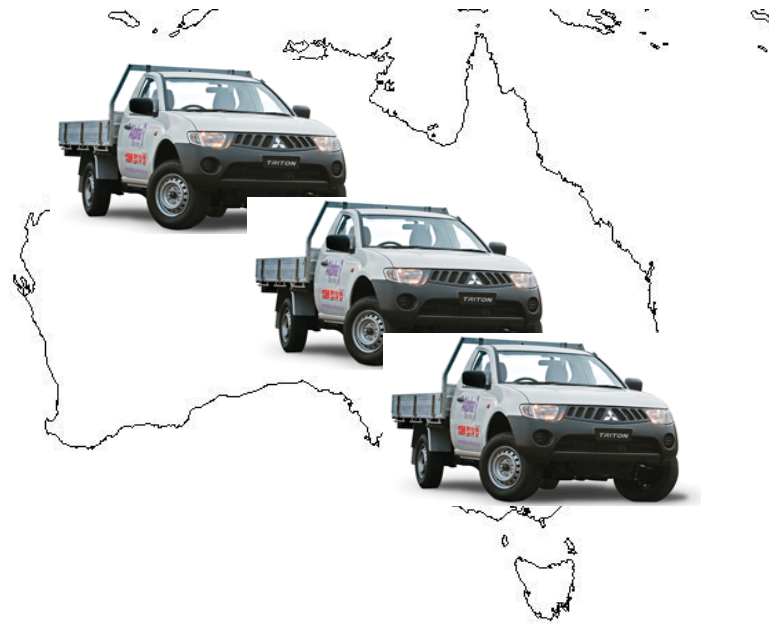
# Average Australian Ecological Footprint





# Nationally 20,000,000 tonnes

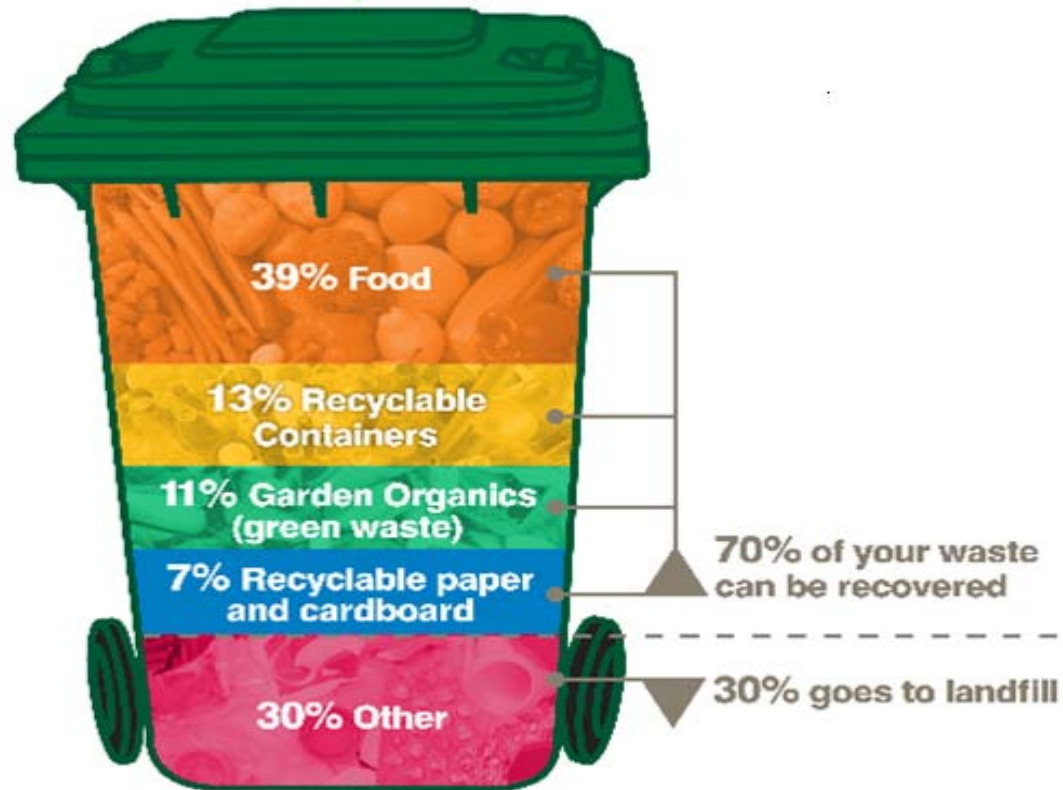
- The total amount of waste produced and disposed to landfill is estimated to be around **one tonne per person per year**
- (State of Australia 2006 - ABS 2003, 141).





70% of the average waste stream is recoverable...

What's in your bin?





## The City's Waste and Cleansing Services



- Provide services to 90,000 households in the LGA – 170,000 residents

- Domestic waste and recycling collection

- Green waste collection

- Weekly booked clean-up service

- Litter & Illegal dumping collection

- Street cleaning services

- Street bin collection

- Over 300 staff – 24/7

- Annual expenditure of \$20 million



# Legislation

- Local Government Act 1997
- Waste Avoidance and Resource Recovery Act, 2001
- WARR Strategy, 2003 & 2007
- POEO Act, 1997
- Environmental Planning and Assessment Act, 1979 reg. '80
  - LEP's, DCP's etc



# A range of tools...





## Issues in MUD's

- 70% population in MUD's (highest in Australia)
- Transient population
- Rental issues and responsibility
- Language and cultural issues
- Overcrowding
- Lack of storage and infrastructure
- Access to recycling
- Public housing
- Planning and policy



# Weekly Recycling



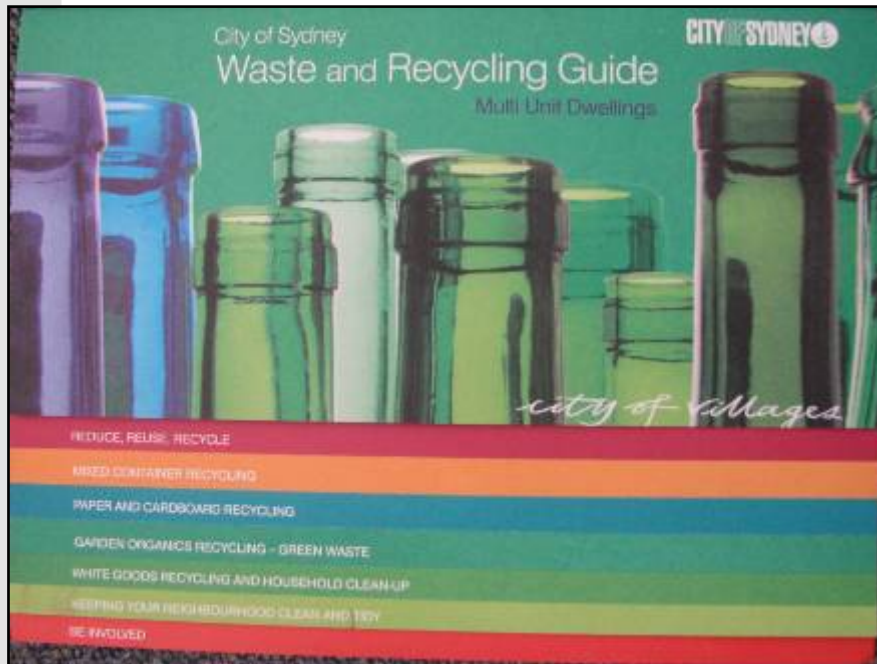
144kg per week



91kg per week



# Education



- Free advice
- Site visits
- Recycling signage
- Waste & recycling guides
- Recycling Bags
- Liaison with residents and building managers
- Ongoing support





# New Bin Bay Signage

**PAPER & CARDBOARD RECYCLING**  
RECYCLING IS IMPORTANT. Please separate your items for recycling.

**YES ✓**

- Telephone books, newspapers and magazines
- Egg cartons
- Window envelopes and tissue boxes
- Cardboard packaging
- Empty pizza boxes

**NO ✗ Put this in the garbage bin.**

- Tissues and napkins
- Mixed cardboard and steel containers
- Paper and cardboard with food scraps

**DO NOT put your recycling in plastic bags. Plastic bags jam the recycling machinery.**

For a recycling guide and more information call 9265 9333 or go to [www.cityofsydney.nsw.gov.au/waste](http://www.cityofsydney.nsw.gov.au/waste)



**MIXED CONTAINER RECYCLING**  
RECYCLING IS IMPORTANT. Please separate your items for recycling.

**YES ✓**

- Steel and aluminium cans
- Glass bottles and jars
- Aerosol cans
- Disposable plastic containers
- Plastic bottles and cartons

**NO ✗ Put this in the garbage bin (not recycling).**

- Nappies
- Syringes (Call 9265 9333 for disposal options)
- Ceramics or Pyrex
- Lights globes and window glass
- Polystyrene
- Plastic toys

**DO NOT put your recycling in plastic bags. Plastic bags jam the recycling machinery.**

For a recycling guide and more information call 9265 9333 or go to [www.cityofsydney.nsw.gov.au/waste](http://www.cityofsydney.nsw.gov.au/waste)



- New signage has been developed with clearer messages.



# Recycling Bags



- Source separation
- Carrying recycling to the recycling bay
- 'What can be recycled' message
- Plastic bags are contaminants in recycling



### This year you helped recycle:

3,652,002 Kgs\*  
of rubbish

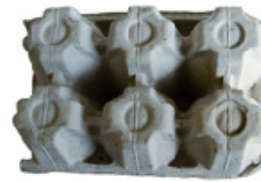
That's equal to:

- ▲ 29,216.08 trees saved
- ☁ 2,191,206.25 Kgs of CO<sub>2</sub> emissions saved
- 🚗 438.24 fewer cars on the road
- 💧 1,460.80 backyard pools of water saved

\*Estimated figures based on the total domestic recycling rate within the City of Sydney for Jun 2006 - Jun 2007

### Test your recycling know-how:

Can this go in your recycling bin?



Egg cartons  Yes  No

1 of 10

Next Question ▶

^Answers are specific to recycling within the City of Sydney

### Subscribe to Live Green:

News on how to [Live Green](#), delivered to your inbox monthly



### Mobile Phone recycling:

Now available at [Council locations](#).

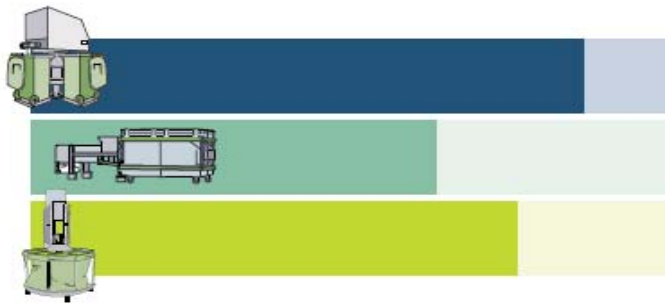
[Russian](#) 525Kb PDF | [Chinese](#) 1.17Mb PDF | [Greek](#) 544Kb PDF | [Indonesian](#) 416Kb PDF | [Korean](#) 3.11Mb PDF





# Relevant policies

**Council of the City of Sydney**  
Policy for Waste Minimisation in New Developments





# References

- City of Sydney Zero Waste – [www.zerowaste.org.au](http://www.zerowaste.org.au)
- Australian Waste Database - <http://www.csiro.au/science/AustralianWasteDatabase.html>
- DECC WARR Act and Strategy - <http://www.environment.nsw.gov.au/warr/index.htm>
- DECC - Who Cares about the Environment 2006  
[http://www.environment.nsw.gov.au/resources/community/2006558\\_whocares06glance.pdf](http://www.environment.nsw.gov.au/resources/community/2006558_whocares06glance.pdf)
- ACF Consumption Atlas - <http://www.acfonline.org.au/consumptionatlas/>