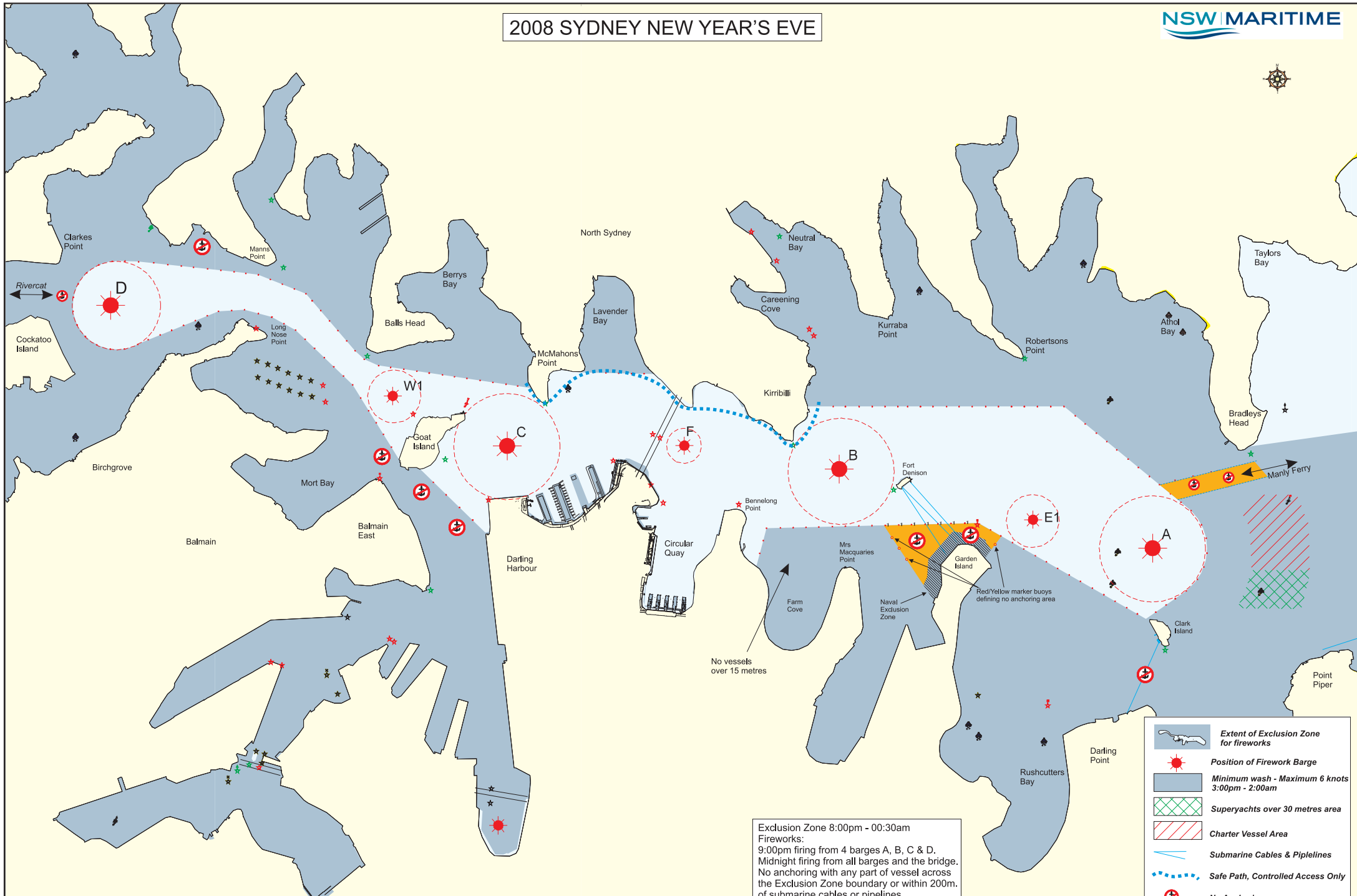
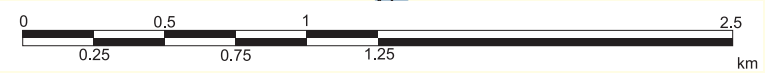


2008 SYDNEY NEW YEAR'S EVE



Exclusion Zone 8:00pm - 00:30am
 Fireworks:
 9:00pm firing from 4 barges A, B, C & D.
 Midnight firing from all barges and the bridge.
 No anchoring with any part of vessel across the Exclusion Zone boundary or within 200m. of submarine cables or pipelines.



- Extent of Exclusion Zone for fireworks
- Position of Firework Barge
- Minimum wash - Maximum 6 knots 3:00pm - 2:00am
- Superyachts over 30 metres area
- Charter Vessel Area
- Submarine Cables & Pipelines
- Safe Path, Controlled Access Only
- No Anchoring
- Defined no anchoring area