



Civil Engineers
C+M Consulting Engineers
11-13 Brookhollow Ave.
Baulkham Hills NSW 2153

Client
City of Sydney
Town Hall House
Level 2, 456 Kent Street
Sydney NSW 2000

GROUP GSA
Group GSA Pty Ltd ABN 76 002 113 779
Level 7, 80 William St East Sydney NSW
Australia 2011 www.groupgsa.com
T +612 9361 4144 F +612 9332 3458
architecture interior design urban design landscape
nom architect M. Sheldon 3990

Project Title
**PIRRAMA PARK
FITNESS FACILITY**

Drawing Title
COVER SHEET

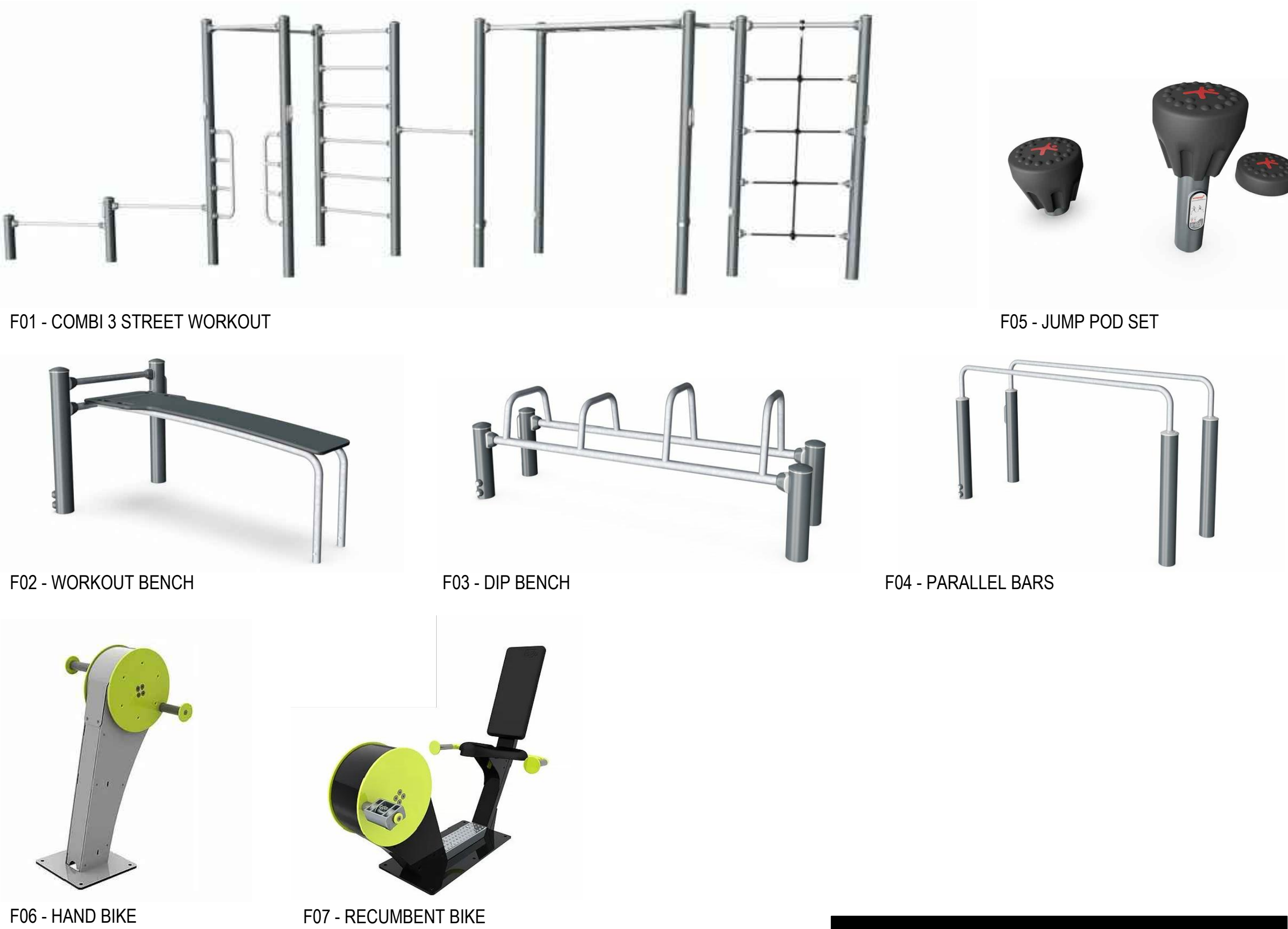
Scale	NA
Drawing created (date)	21/06/2019
By	OK
Plotted and checked by	OK
Verified	AH
Approved	AH
Drawing No	Issue
190099 0000	F
File	Plot Date
\$FILES	\$DATES

This drawing is the copyright of Group GSA Pty Ltd and may not be altered, reproduced or transmitted in any form or by any means in part or in whole without the written permission of Group GSA Pty Ltd.
All levels and dimensions are to be checked and verified on site prior to the commencement of any work, making of shop drawings or fabrication of components.
Do not scale drawings. Use figured Dimensions.

FOR CONSTRUCTION

MATERIALS SCHEDULE							
CODE	DESCRIPTION	LOCATION	SPECIFICATION	COLOUR	SUPPLIER / MANUFACTURER	DETAIL REF.	SAMPLERS & SAMPLE PANELS REQUIRED FOR APPROVAL
SURFACE FINISHES							
P01	ConcretePavement	Fitness area	110mm thick reinforced 32MPa concrete with SL72 top and bottom with 40mm cover 100DGB base compacted to 98% MDD Sawn every 3m max. and/or specify. Expansion joints 6m max.	Colour: Plain concrete grey Finish: Washed Exposed aggregate	Boral or equal and approved Tel: 02 9220 6300		1 x 1m Sample Panels
SF01	Rubber Sofffall	Fitness area	Wearing Layer: 20mm Melos EPDM 60 Shore A Impact Apportion Layer: To manufacturers specification. Thickness determined by supplier to meet fall heights from fitness equipment.	Colour: RAL6017 May Green-50% RAL6000 Patina Green- 30% RAL5018 Turquoise Blue - 20%	Synthetic Grass and Rubber Surfaces Melos rubber Ph: 02 9986 1133	02 4001	Product Sample mix
SF02	Porous Pavement	Existing trees	FiltaPave Porous Pavement- 40mm thick. Base – crushed concrete aggregate or blue metal – nominal size 10mm; thickness 50mm; hand compacted	Colour: Light Grey	FiltaPave Ph: 0419259854 W: filtapave.com.au	07 4001	Product Sample
DC	Decomposed Granite	As per drawings	Particle size: 5-20mm with 40% 5-10mm and 60% 10-20mm. Cement stabilised at 50% w/w	Colour: Buff, to match existing	ANL or approved equivalent Ph: 13 14 58	08 4001	Product Sample
WALLS AND STRUCTURES							
W01	Sandstone block wall	Refer drawings	Cream-buff oxidizing sandstone blocks. Typical 450mm wide sandstone wall. Capping: 450x120x800mm Blocks: 400x300x800mm Sandstone by Gosford Quarries	Colour: Cream Finish: Rock Faced. All exposed edges corners to be smoothed to avoid sharp corners	Gosford Quarries Sandstone Tel: 02 8585 8282	01-02 4001	Product Photos prior to ordering/ delivery
	Insitu concrete stairs	Refer drawings	350x166mm Insitu concrete steps with 15mm chamfer edge and Latham recessed mounted aluminium stair nosing strip 50x10mm	Colour: Plain concrete grey	Contractor	05-06 4001 & Refer Engineers drawings	
EDGES							
CE	Concrete Edge	As per drawings	Size: W 150 x H200 10mm Radius on exposed edges	Colour: Plain concrete grey Finish: Steel tool finish	Contractor	04 4001	N
SOFTWORKS							
	Topsoil Type A (Turf topsoil)		Smart Mix 2 turf rootzone turf		Benedict Industries Tel: 02 9986 35 00		N

FURNISHINGS SCHEDULE							
CODE	DESCRIPTION	LOCATION	SPECIFICATION	COLOUR	SUPPLIER / MANUFACTURER	DETAIL REF.	SAMPLES & SAMPLE PANELS REQUIRED FOR APPROVAL
FURNITURE							
S01	Existing Seating relocated	Fitness area	COS existing seating bench to be relocated	NA	COS	05-06 4002	
S02	Seating Platform	Fitness area	Oxley Seating Platform W:1800mm L:1800mm H:430mm Frame: 304 grade stainless steel Battens: Select Grade Hardwood Fixing: Secure fixing to manufacturer's recommendations	Colour: Satin Black Frame, Battens-Smooth finish	MOS Urban Pty Ltd Ph: 0291883459 W: www.mosurban.com	NA	N
WL	Wharf Timber Log	Fitness area	Recycled Wharf Timber Logs/Piles W:380mm L:3500mm H:400mm Timber: Seasoned hardwood End Cap: 320mm Diameter 2mm Stainless steel plate fixed to each end of timber log	Finish: Ground and Brushed	AusTimber Ph: 0261811664 W: austimber.com.au	03-04 4002	N
FITNESS EQUIPMENT							
F01	Combi 3 Street Workout Pro	Fitness area	Product number: FSW 10301-0901	Colour: Surface Grey	Kompan Playscape Pty Ltd Ph: 0294364400	NA	N
F02	Bench	Fitness area	Product number: FSW 20300-0901	Colour: Surface Grey	Kompan Playscape Pty Ltd Ph: 0294364400	NA	N
F03	Dip Bench	Fitness area	Product number: FSW 20200-0901	Colour: Surface Grey	Kompan Playscape Pty Ltd Ph: 0294364400	NA	N
F04	Parallel Bars	Fitness area	Product number: 20100-0901	Colour: Surface Grey	Kompan Playscape Pty Ltd Ph: 0294364400	NA	N
F05	Jump Pod Set	Fitness area	Product number: FSW 22100-0801	Colour: Surface Grey	Kompan Playscape Pty Ltd Ph: 0294364400	NA	N
F06	Shortened Hand Bike	Fitness area	Product number: TGO911	Colour: Surface Grey	The Great Outdoor Gym Company Ph: 0296542377	NA	N
F07	Recumbent Bike	Fitness area	Product number: TGO891	Colour: Surface Grey	The Great Outdoor Gym Company Ph: 0296542377	NA	N



FOR CONSTRUCTION

Amendments	Issue Description	Date
A	ISSUED FOR 70% TENDER	23/08/2019
B	TENDER ISSUE	10/09/2019
C	TENDER ISSUE	27/09/2019
D	ISSUED FOR CC	08/10/2019
E	ISSUED FOR CC	17/12/2019
F	ISSUED FOR CC	21/04/2020

Civil Engineers
C+M Consulting Engineers
11-13 Brookhollow Ave,
Baulkham Hills NSW 2153

Client
City of Sydney
Town Hall House
Level 2, 456 Kent Street
Sydney NSW 2000

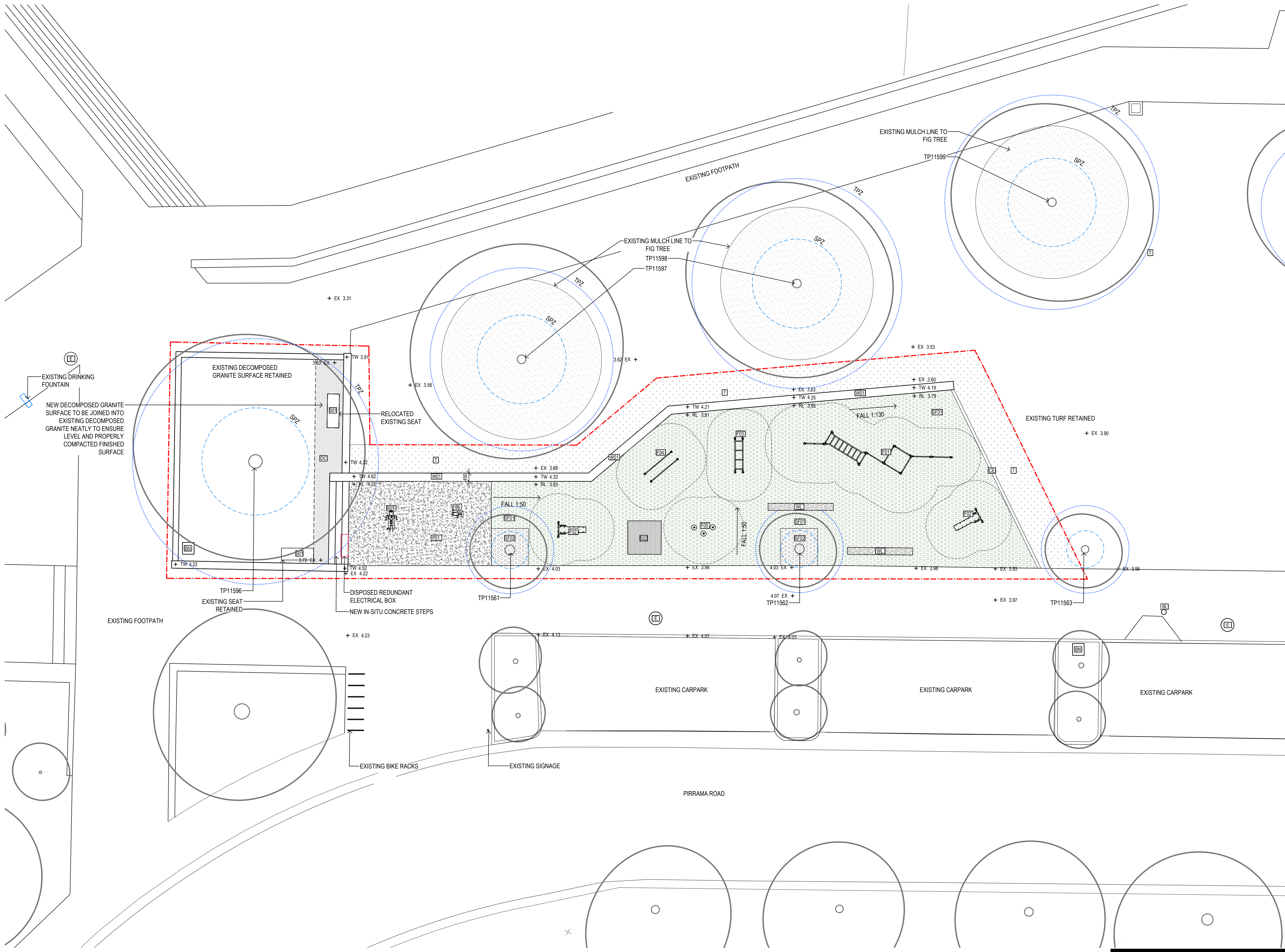
GROUP GSA
Group GSA Pty Ltd ABN 76 002 113 779
Level 7, 80 William St East Sydney NSW
Australia 2011 www.groupgsa.com
T +612 9361 4144 F +612 9332 3458
architecture interior design urban design landscape
nom architect M. Sheldon 3990

Project Title
**PIRRAMA PARK
FITNESS FACILITY**

Drawing Title
**LANDSCAPE
MATERIALS SCHEDULE**

Scale	N/A
Drawing created (date)	21/06/2019
By	OK
Plotted and checked by	OK
Verified	AH
Approved	AH
Drawing No	Issue
190099	2000 F
File	Plot Date
SFILES	SDATES

This drawing is the copyright of Group GSA Pty Ltd and may not be altered, reproduced or transmitted in any form or by any means in part or in whole without the written permission of Group GSA Pty Ltd. All levels and dimensions are to be checked and verified on site prior to the commencement of any work, making of shop drawings or fabrication of components. Do not scale drawings. Use figured Dimensions.



Amendments		
Issue	Description	Date
A	ISSUED FOR 70% TENDER	23.08.2019
B	TENDER ISSUE	10/09/2019
C	TENDER ISSUE	27/09/2019
D	ISSUED FOR CC	08/10/2019
E	ISSUED FOR CC	17/12/2019
F	ISSUED FOR CC	21/04/2020

LEGEND

BOUNDARIES

--- WORKS BOUNDARY

LEVELS

+ EX X.XX EXISTING LEVEL

+ RL X.XX PROPOSED LEVEL

+ TW X.XX TOP OF WALL LEVEL

HARDWORKS

P01 - SOFTFALL RUBBER. REFER SCHEDULE

SF01 - SOFTFALL RUBBER. REFER SCHEDULE

SF02 - SOFTFALL TREE MULCH. REFER SCHEDULE

W01 - SANDSTONE WALL. VARIABLE HEIGHT x 450mm WIDE

CG - DECOMPOSED GRANITE

CE - CONCRETE EDGE

SOFTWORKS

○ EXISTING TREE RETAINED

TP11596 ↑ TREE IDENTIFICATION NUMBER. Refer to Arborist Report

SRZ - STRUCTURAL ROOT ZONE. Refer to Arborist Report

TPZ - TREE PROTECTION ZONE. Refer to Arborist Report

EXISTING MULCH TO FIG TREES

T - TURF (TO BE MADE GOOD)

FURNITURE

BN - EXISTING LITTER BIN

BL - EXISTING BOLLARD

ST - EXISTING SEAT

ST - EXISTING SEAT TO BE REMOVED

WL - WHARF TIMBER LOGS

FITNESS EQUIPMENT

F01 - COMBI 3 STREET WORKOUT PRO

F02 - SIT UP BENCH

F03 - DIP BENCH

F04 - PARALLEL BARS

F05 - JUMP POD SET

F06 - HAND BIKE

F07 - RECUMBENT BIKE

EXISTING SERVICES

EP - EXISTING ELECTRICAL POLE

Civil Engineers

C+M Consulting Engineers

11-13 Brookhollow Ave,
Baulkham Hills NSW 2153

Client

City of Sydney

Town Hall House
Level 2, 456 Kent Street
Sydney NSW 2000



Group GSA Pty Ltd ABN 76 002 113 779
Level 7, 80 William St East Sydney NSW
Australia 2011 www.groupgsa.com

T +612 9361 4144 F +612 9332 3458

architecture interior design urban design landscape
nom architect M. Sheldon 3990

Project Title

PIRRAMA PARK
FITNESS FACILITY

Drawing Title

GENERAL ARRANGEMENTS
PLAN

Scale 1:100 @ A1

Drawing created (date) 21/06/2019

By OK

Plotted and checked by OK

Verified AH

Approved AH

Drawing No Issue

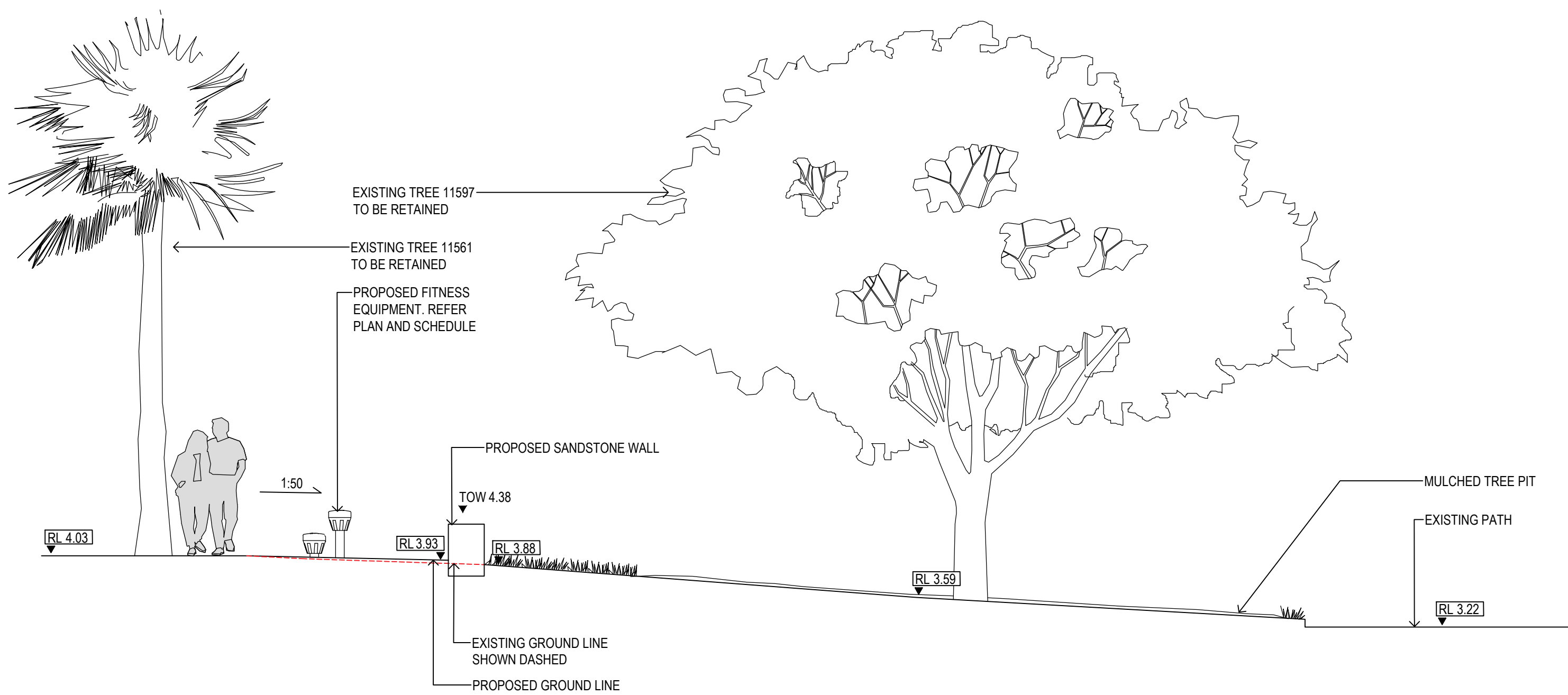
190099 2001 F

File Plot Date

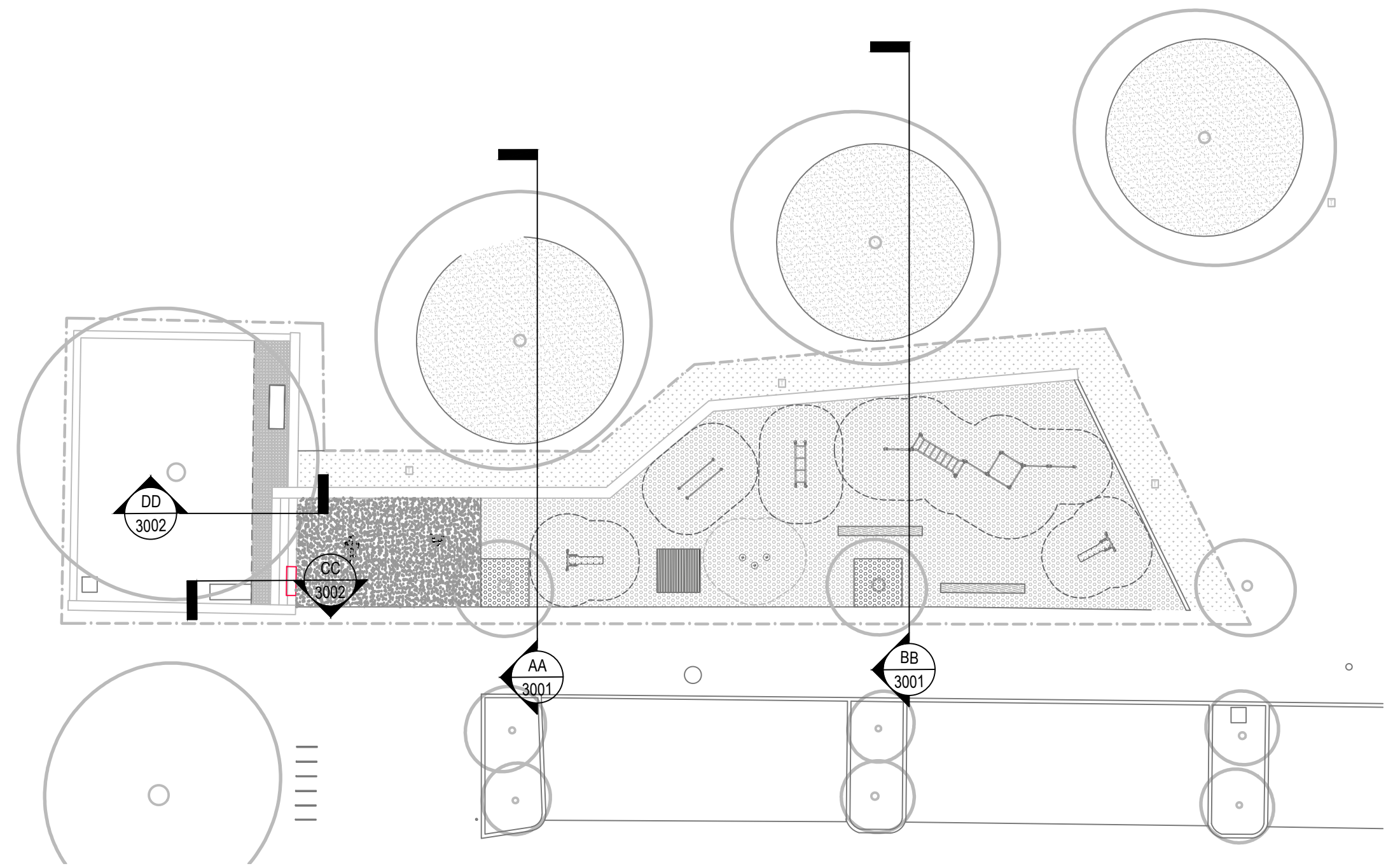
SFILES S0ATES

This drawing is the copyright of Group GSA Pty Ltd and may not be altered, reproduced or transmitted in any form or by any means in part or in whole without the written permission of Group GSA Pty Ltd. All levels and dimensions are to be checked and verified on site prior to the commencement of any work, making of shop drawings or fabrication of components. Do not scale drawings. Use figured Dimensions.

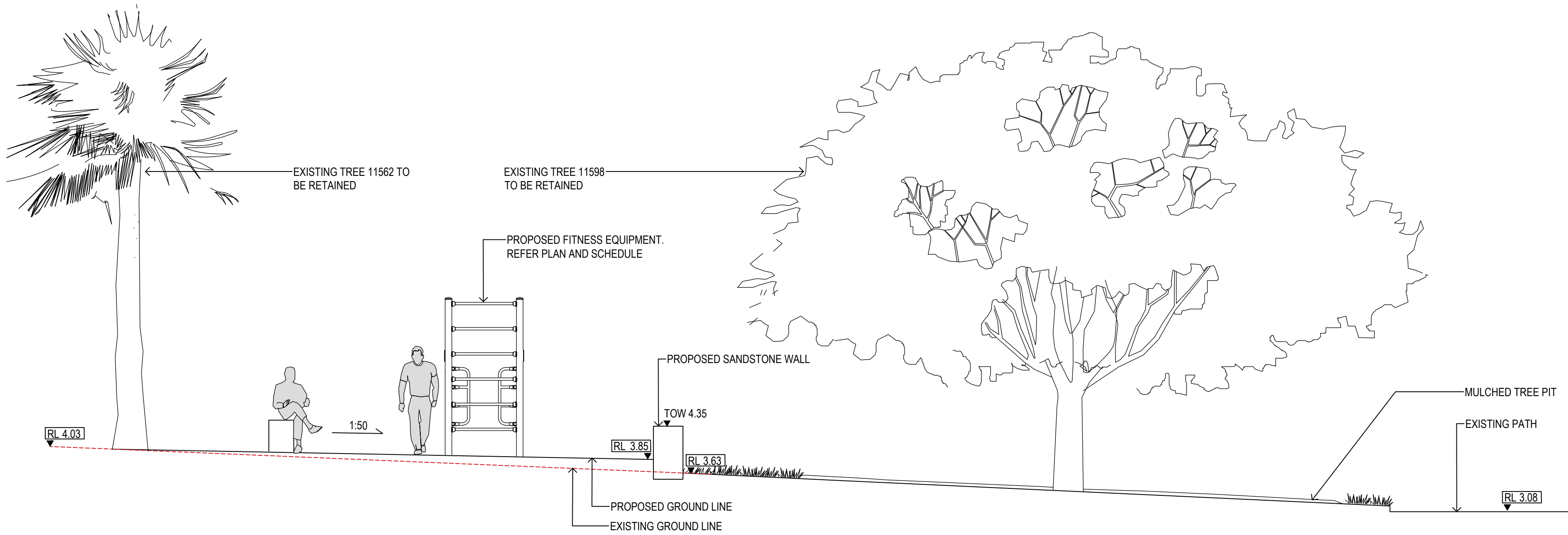
FOR CONSTRUCTION



01 SECTION AA
1:50



03 SECTION KEY PLAN
1:200



02 SECTION BB
1:50

Amendments		
Issue	Description	Date
A	ISSUED FOR 70% TENDER	23/08/2019
B	TENDER ISSUE	10/09/2019
C	TENDER ISSUE	27/09/2019
D	ISSUED FOR CC	08/10/2019
E	ISSUED FOR CC	17/12/2019

Civil Engineers
C+M Consulting Engineers
11-13 Brookhollow Ave.
Baulkham Hills NSW 2153

Client
City of Sydney
Town Hall House
Level 2, 456 Kent Street
Sydney NSW 2000

GROUP GSA
Group GSA Pty Ltd ABN 76 002 113 779
Level 7, 80 William St East Sydney NSW
Australia 2011 www.groupgsa.com
T +612 9361 4144 F +612 9332 3458
architecture interior design urban design landscape
nom architect M. Sheldon 3990

Project Title
**PIRRAMA PARK
FITNESS FACILITY**

Drawing Title
**LANDSCAPE SECTIONS
SHEET 01**

Scale	N/A	
Drawing created (date)	21/06/2019	
By	OK	
Plotted and checked by	OK	
Verified	AH	
Approved	AH	
Drawing No	Issue	
190099	3001	E
File	Plot Date	
SFILES	S0ATES	

FOR CONSTRUCTION