

Peter Forsyth Auditorium access information

Contents

About Peter Forsyth Auditorium	1
Getting to PFA	1
Public transport	1
Driving or parking	2
Taxis and private vehicles	2
Entrance	3
Toilets	3
Change and shower facilities	4
Spectator areas.....	4
Audio communication.....	5
Kitchenette.....	5
Find out more.....	5

About Peter Forsyth Auditorium

Peter Forsyth Auditorium (PFA) is a single large hall suitable for multipurpose sports classes and competitions. PFA features polished floorboards, multiple court markings for basketball, netball, futsal and so on, basketball hoops and nets. It includes spectator seating, toilets and a kitchenette.

PFA is open during scheduled programs and competitions only. There are no City of Sydney staff working at the venue. PFA is available for hire. Contact City of Sydney on 9265 9333 or email communityvenues@cityofsydney.nsw.gov.au.

Getting to PFA

Public transport

There are 2 bus stops on Glebe Point Road located between 160 metres and 200 metres from the entrance to PFA. One on the north side of Glebe Point Road near the intersection with Cowper Street. The other is located on the south side of Glebe Point Road in front of Glebe Public School.

The bus routes are 431 and 433. Route 431 goes to Glebe Point Road or Martin Place. The 433 goes to Balmain or Railway Square.

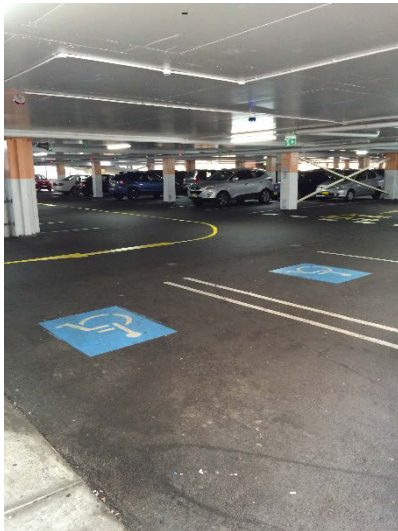
There is no train station near PFA. The closest train station is Redfern, 1.5 kilometres away.

To plan your trip, visit [Transport for NSW](#) or call 131 500.

The Village2Village community transport bus operates Thursdays and Fridays and is free for all passengers. The route from Redfern to Broadway sets down on Glebe Point Road on the corner of Cowper Street, 200 metres from the entrance to PFA.

Driving or parking

There is no on-site dedicated parking at PFA.



The closest parking is at Broadway Shopping Centre, directly adjacent to PFA. For accessible parking level with PFA, park on UG North (pale orange level). There are 2 wide car parking spaces within 50 metres of the PFA entrance. First 2 hours of parking is free. The car park is open 24 hours, 7 days a week and is operated by Centre Management. Queries can be directed to the car park manager on (02) 9211 5635. The maximum height is 1.95 metres, pre-booking is unavailable.

The nearest on-street mobility car parking is 250 metres from the entrance on Cowper Street, on the northern side, east of Campbell Lane.

Taxis and private vehicles

There is no dedicated set down area for taxis and private vehicles.

Entrance



The entrance to PFA is away from the street front. Travel through the pedestrian park from Franklin Street and Glebe Point Road. Travel past the outdoor basketball courts and the PFA entrance is on the left-hand side before entering the shopping centre car park.

PFA has step free access. There is a slight incline at the entrance. Doors are double glass, heavy and covered in security screening. Doors pull to open. Single door opens to 825mm wide and double doors open to 1650mm wide.

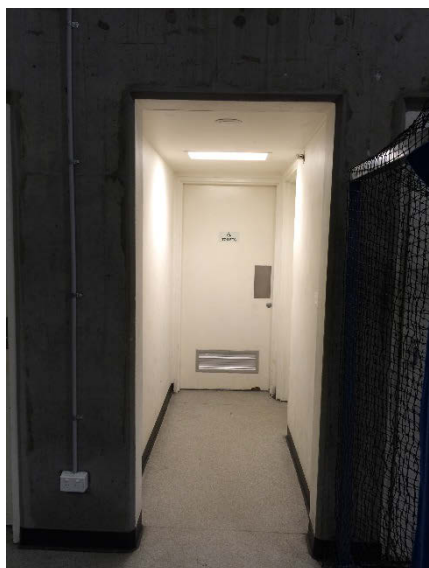
Doors remain open during scheduled activities and competitions only.

Doors are opened via keypad, which is not accessible for people with vision impairment or wheelchair users. Keypad code is issued by the City of Sydney.

Toilets

There is 1 unisex accessible toilet at PFA. From the entrance travel straight ahead along the right-hand side of the court. Travel past the kitchenette and men's toilets. The accessible toilet is on the right-hand side and down a corridor 840mm wide.

The doorway to the accessible toilet has a heavy, solid wooden door, hinged on the left-hand side, push door to open. Toilet is right-hand side transfer.



There is no ambulant toilet at PFA.

Change and shower facilities

There are no accessible or ambulant change or shower facilities at PFA.

PFA is situated on a single level. There are no lifts, stairs, hallways or ramps.

Spectator areas



There is potential for mixed accessible spectator seating around the perimeter of the court, depending on how seating has been arranged by hirer or staff member.

Audio communication

There is no hearing loop system at PFA.

Kitchenette



There is a kitchenette available at PFA. From the entrance travel straight ahead along the right hand side of the courts and the kitchenette is on the right-hand side. Access to the kitchenette is through a level doorway 780mm wide. There is no space under the benches for wheelchair users and there is no signage to operate or navigate the kitchenette.

Find out more

To find out more about Peter Forsyth Auditorium and the activities on offer, contact Community Venues team at the City of Sydney on 9265 9333 or communityvenues@cityofsydney.nsw.gov.au.