

King George V Recreation Centre access information

Contents

About King George V Recreation Centre.....	1
Getting to KGV.....	1
Public transport	1
Driving or parking	2
Taxis and private vehicles	2
Entrance	2
Customer service	3
Toilets	3
Change and shower facilities	3
Lifts, stairs and passageways	3
Audio communication.....	5
Find out more.....	5

About King George V Recreation Centre

King George V Recreation Centre (KGV) includes 2 indoor multipurpose courts, 1 outdoor multipurpose court, 1 cardio and weights fitness gym and 1 multipurpose community room.

Getting to KGV

Public transport

There are no bus routes that stop near KGV. The closest bus stops are at Wynyard approximately 600 metres away. There are no train stations near KGV. The closest train station is Wynyard approximately 600 metres away.

The pathway to Wynyard is approximately level and one direction south, down Cumberland Street across Grosvenor Street and continues along York Street.

To plan your trip, visit [Transport for NSW](#) or call 131 500.

The Village2Village community transport bus operates Thursdays and Fridays and is free for all passengers. The Village2Village route from Broadway to

Woolloomooloo is via Sydney CBD and stops on Cumberland Street, within 50 metres of the entrance to KGV.

Driving or parking

There is no on-site dedicated accessible parking at KGV.

The nearest mobility car parking is 15 metres away from the entrance on Cumberland Street, on the northern side opposite Sydney Harbour YHA.

Taxis and private vehicles

There is no designated set down area for taxis and private vehicles at KGV.

Entrance

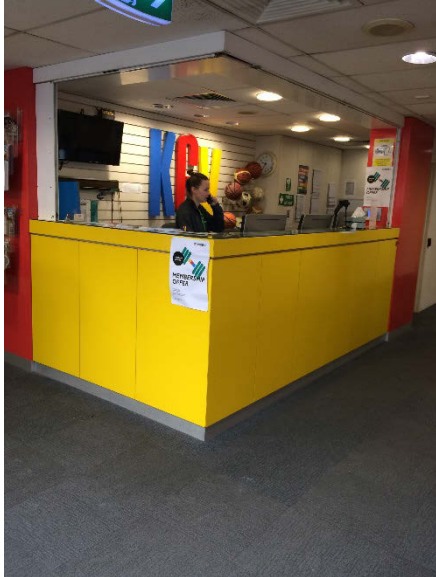


The pathway to the main pedestrian entrance includes a shallow descent from the footpath to the KGV entrance. KGV has step free access. The doorway includes heavy double swing glass doors at entry. Doors have fixed bar to pull open. Single door opens to 1020mm wide.

Doors are unlocked during operating hours.

Customer service

KGV reception desk is level with and directly opposite the entrance. The desk is not wheelchair accessible and is 1300mm high.



Toilets

There is 1 unisex accessible toilet at KGV. From the entrance, travel straight ahead down the hallway, past the reception desk and bathrooms. The toilet is to the left.

The doorway to the accessible toilet is a single solid wood swinging door that is hinged on the left-hand side. Push to enter.

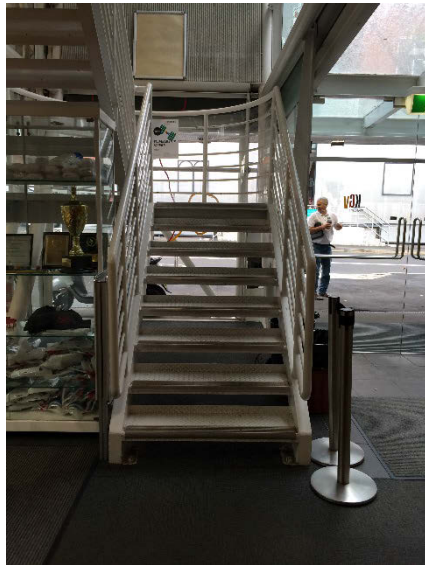
Change and shower facilities

There is 1 unisex accessible shower included in the accessible toilet on the ground floor of KGV. From the entrance, travel straight ahead down the hallway, past the reception desk and bathrooms. The doorway to the accessible shower and toilet is a single solid wood swinging door that is hinged on the left-hand side. Push to enter.

Lifts, stairs and passageways

There is no lift at KGV.

Access to the gym is via 2 flights of stairs, 18 steps in total. Continuous handrail on the left-hand side and handrail on right-hand side. Stairs are open and include nosings (non-slip edges).



The ramp to the gym is at the back of KGV opposite the entrance. Customers must notify KGV staff when using the ramp.

From the entrance, travel straight ahead down the hallway, past the reception desk and toilets, through double glass doors to the ramp. Double glass doors are heavy, swinging doors with a fixed bar to push open. Double doors open to 1600mm wide.



Ramp to level 1 is 1010mm wide and includes continuous handrails on the right-hand side.

The door at the top of the ramp to access the gym is locked. Customers must notify KGV staff when using the ramp. KGV staff can open the door from inside the gym.

Audio communication

There is no hearing loop available at KGV.

Find out more

To find out more about KGV and the activities on offer, contact KGV staff at the City of Sydney on 02 9244 3600 or kgv@cityofsydney.nsw.gov.au.