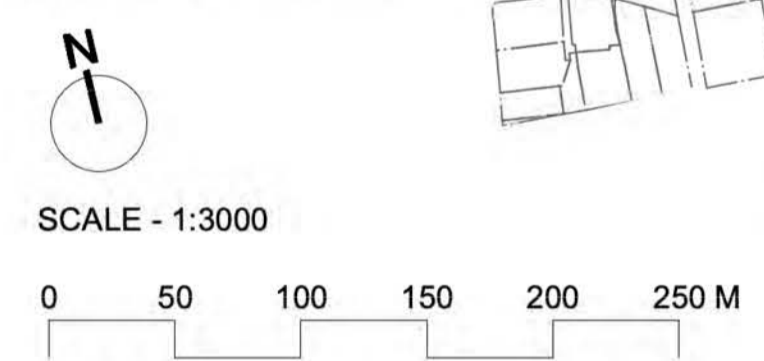


Oxford Street Walking and Cycling Improvements

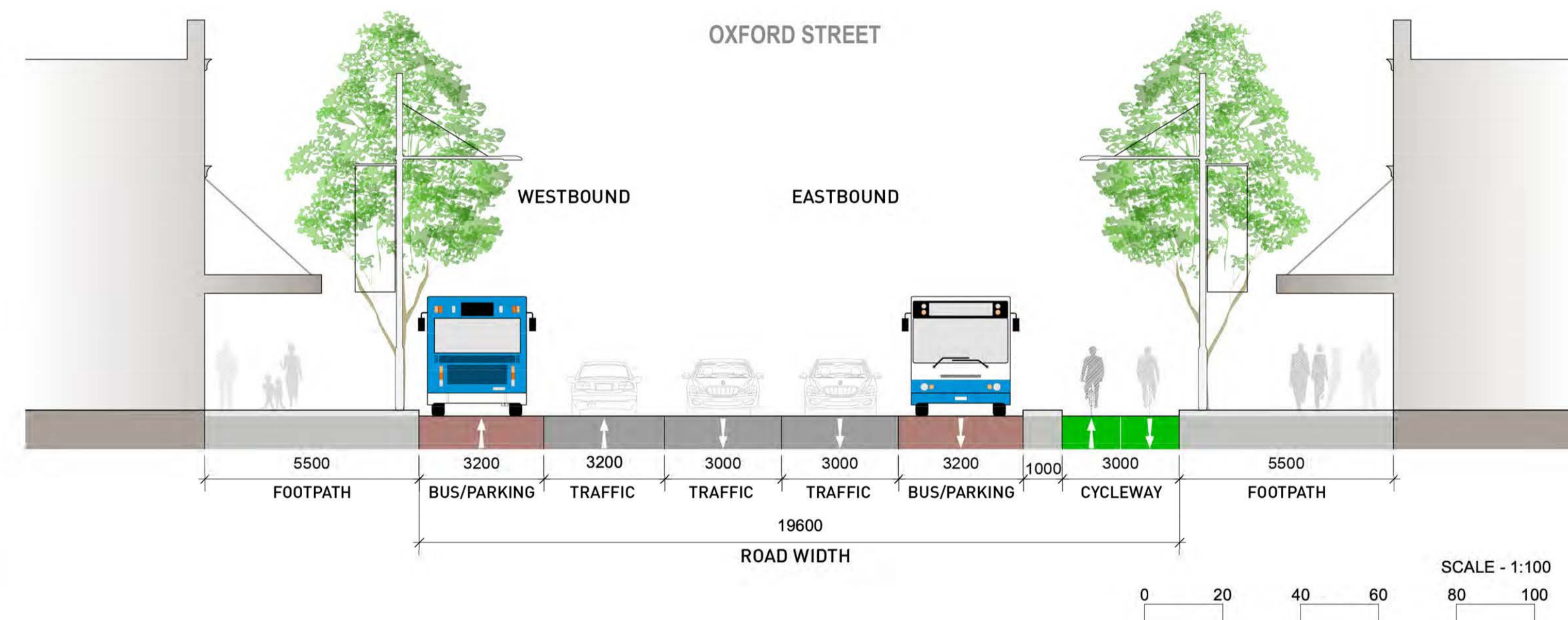
Castlereagh Street to Taylor Square

This document provides the designs for the Liverpool and Oxford Street west two-way separated cycleway. It'll run along the northern kerbside between Taylor Square and Castlereagh Street providing a safe connection for around 3,000 daily bike trips on Oxford Street and links to existing cycleways.



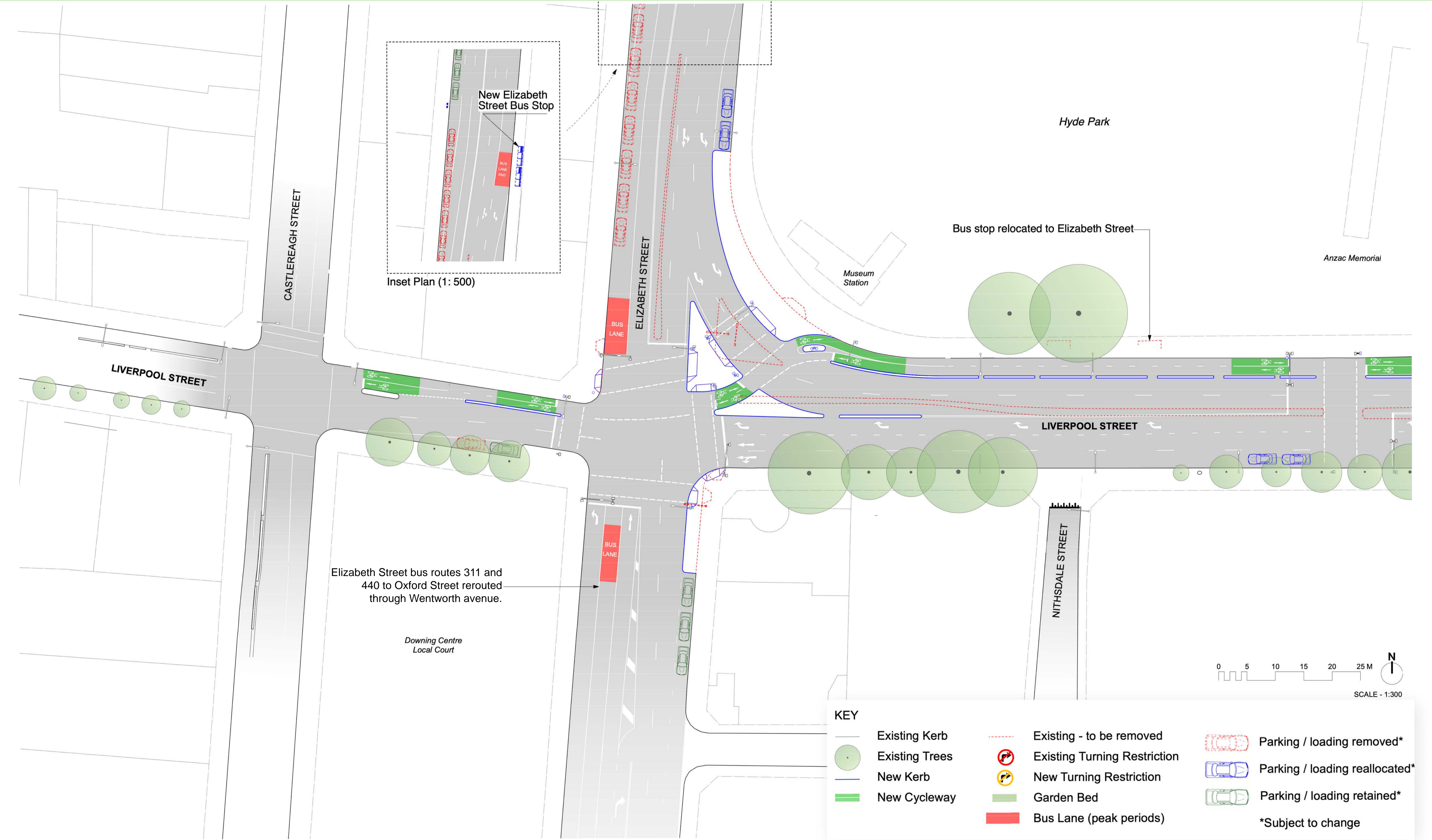
Location Plan

- █ City of Sydney - Liverpool and Oxford Street West Cycleway
- █ Transport for NSW - Oxford Street East Cycleway



Typical Street Cross Section A-A

Oxford Street Walking and Cycling Improvements Castlereagh Street to Taylor Square

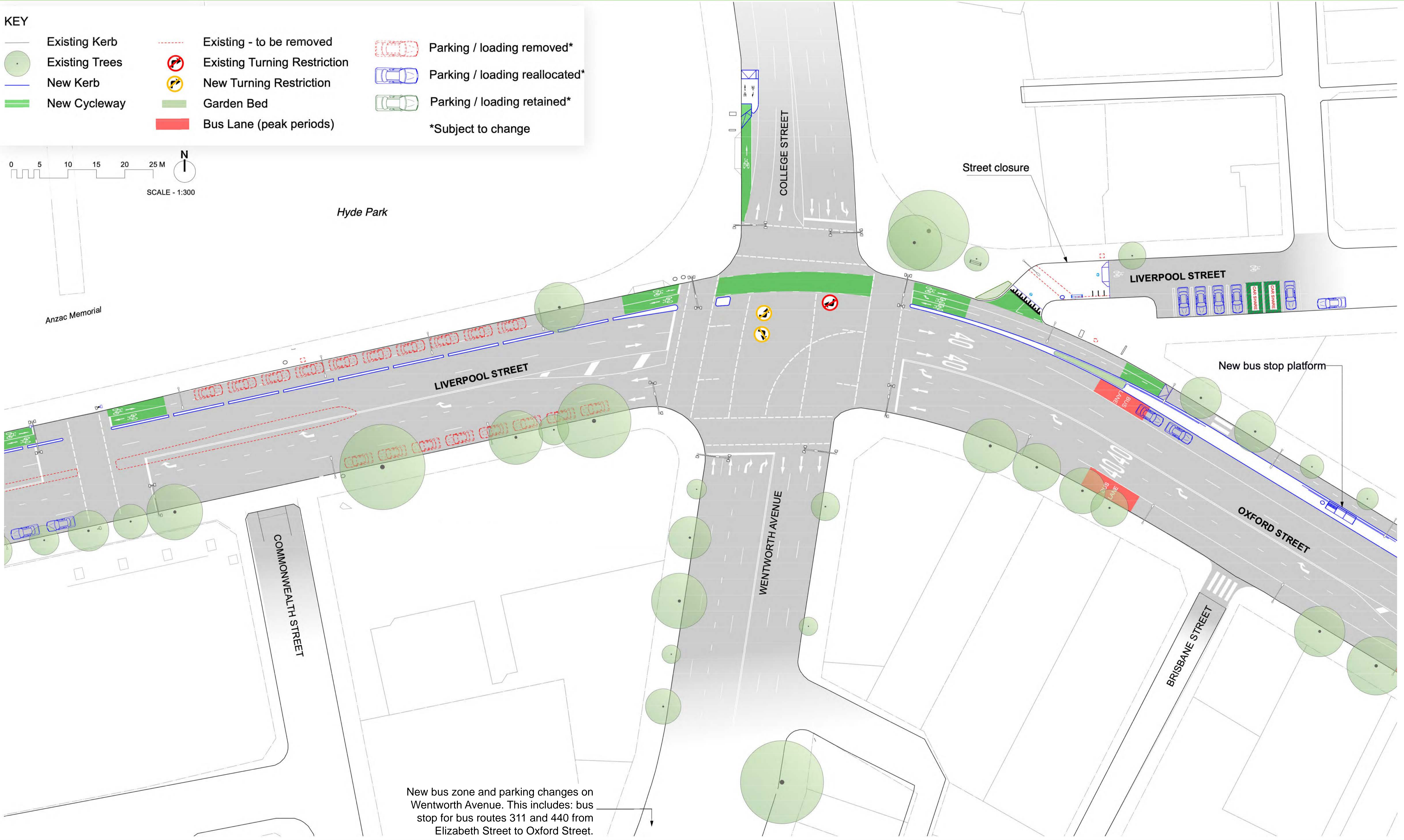
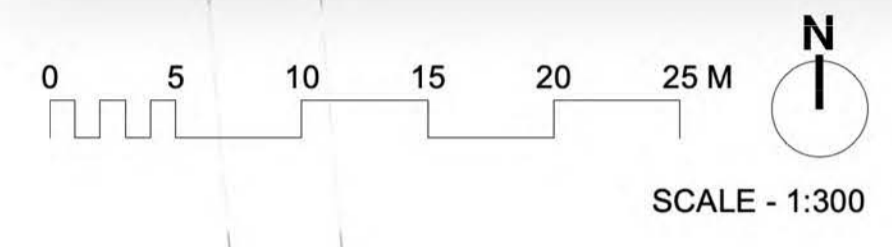


Oxford Street Walking and Cycling Improvements Castlereagh Street to Taylor Square

KEY

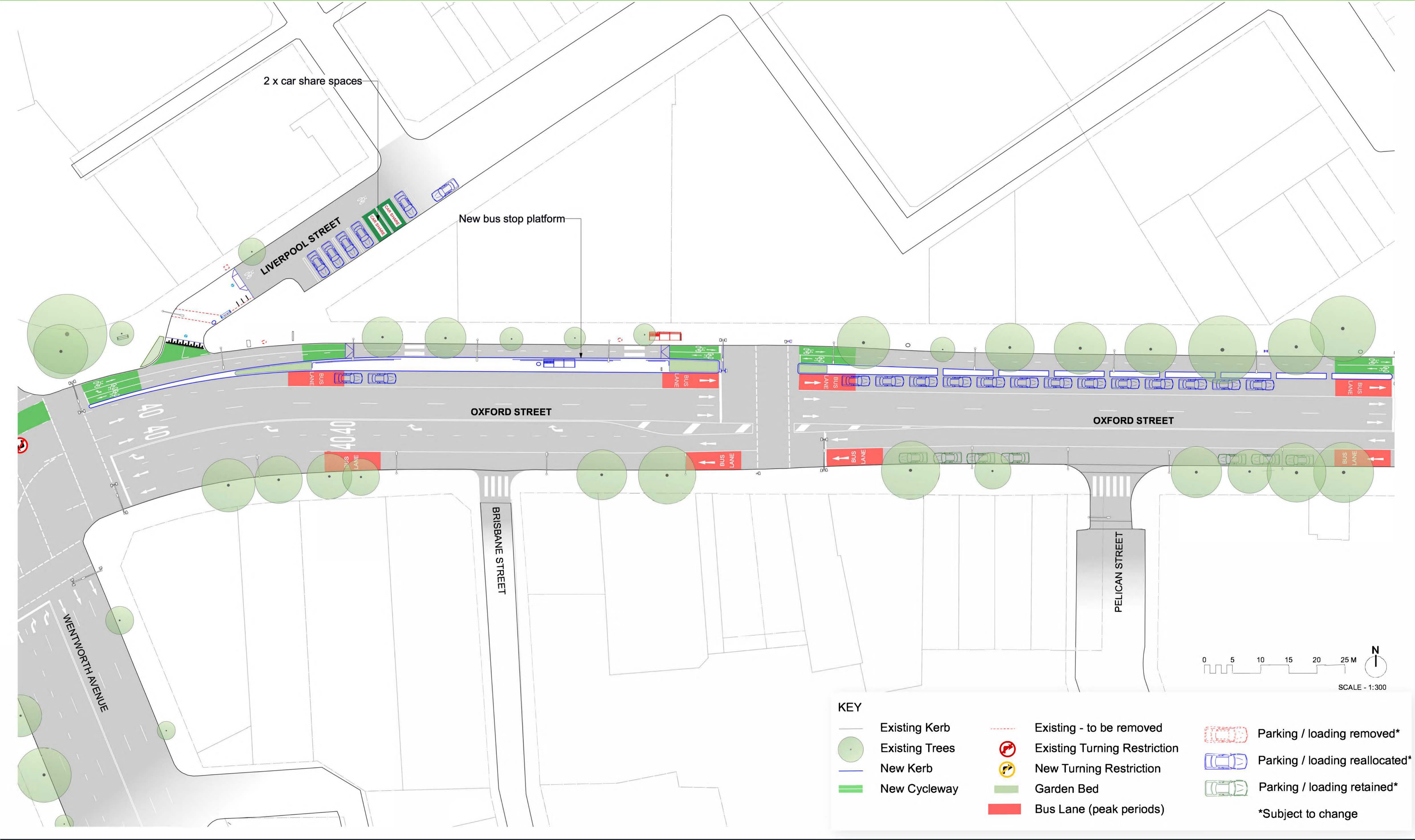
	Existing Kerb		Existing - to be removed		Parking / loading removed*
	Existing Trees		Existing Turning Restriction		Parking / loading reallocated*
	New Kerb		New Turning Restriction		Parking / loading retained*
	New Cycleway		Garden Bed		
			Bus Lane (peak periods)		

*Subject to change



New bus zone and parking changes on Wentworth Avenue. This includes: bus stop for bus routes 311 and 440 from Elizabeth Street to Oxford Street.

Oxford Street Walking and Cycling Improvements Castlereagh Street to Taylor Square

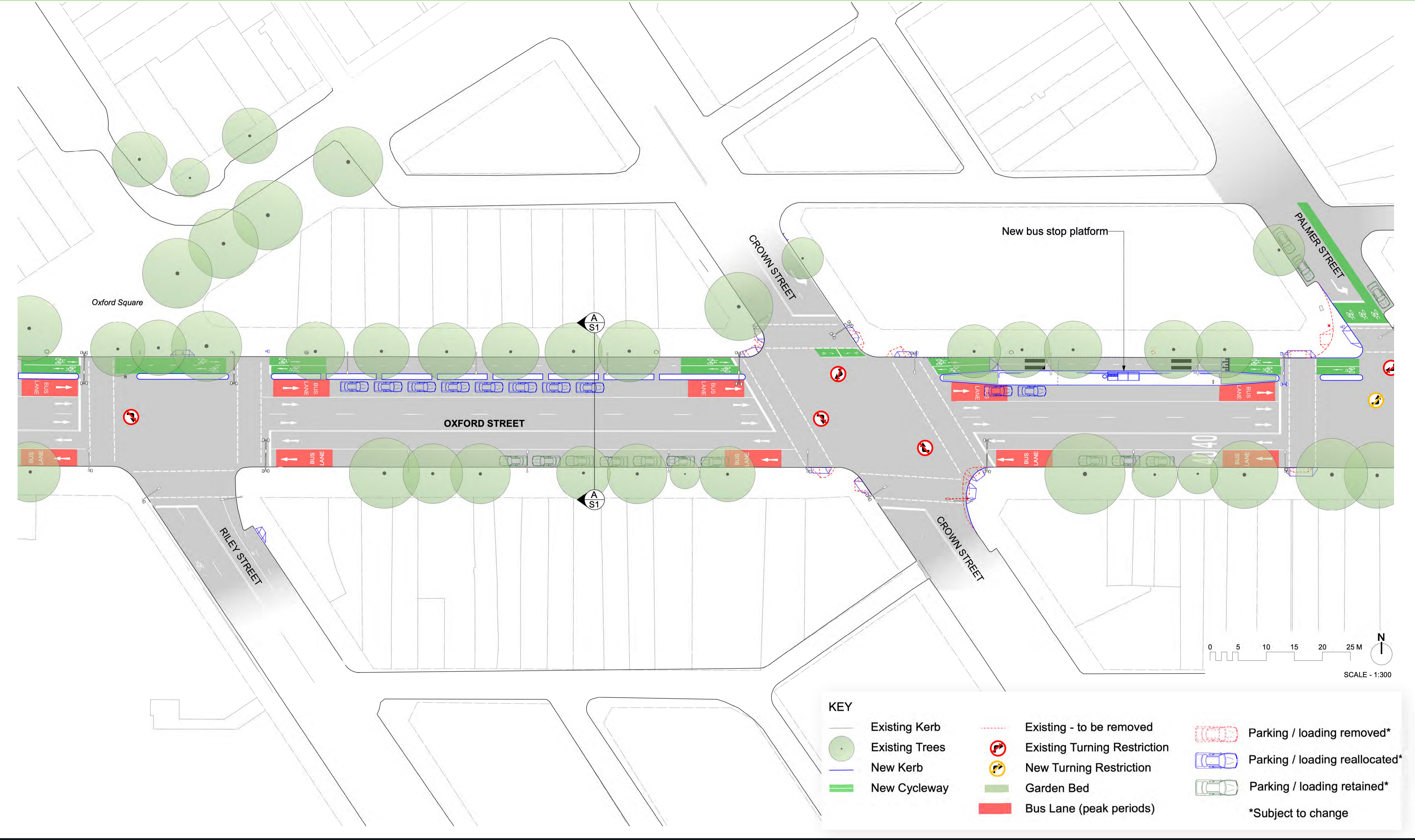


KEY

Existing Kerb	Existing - to be removed	Parking / loading removed*
Existing Trees	Existing Turning Restriction	Parking / loading reallocated*
New Kerb	New Turning Restriction	Parking / loading retained*
New Cycleway	Garden Bed	
	Bus Lane (peak periods)	

*Subject to change

Oxford Street Walking and Cycling Improvements Castlereagh Street to Taylor Square



KEY			
	Existing Kerb		Existing - to be removed
	Existing Trees		Existing Turning Restriction
	New Kerb		New Turning Restriction
	New Cycleway		Garden Bed
			Bus Lane (peak periods)
			Parking / loading removed*
			Parking / loading reallocated*
			Parking / loading retained*
			*Subject to change

Oxford Street Walking and Cycling Improvements Castlereagh Street to Taylor Square

