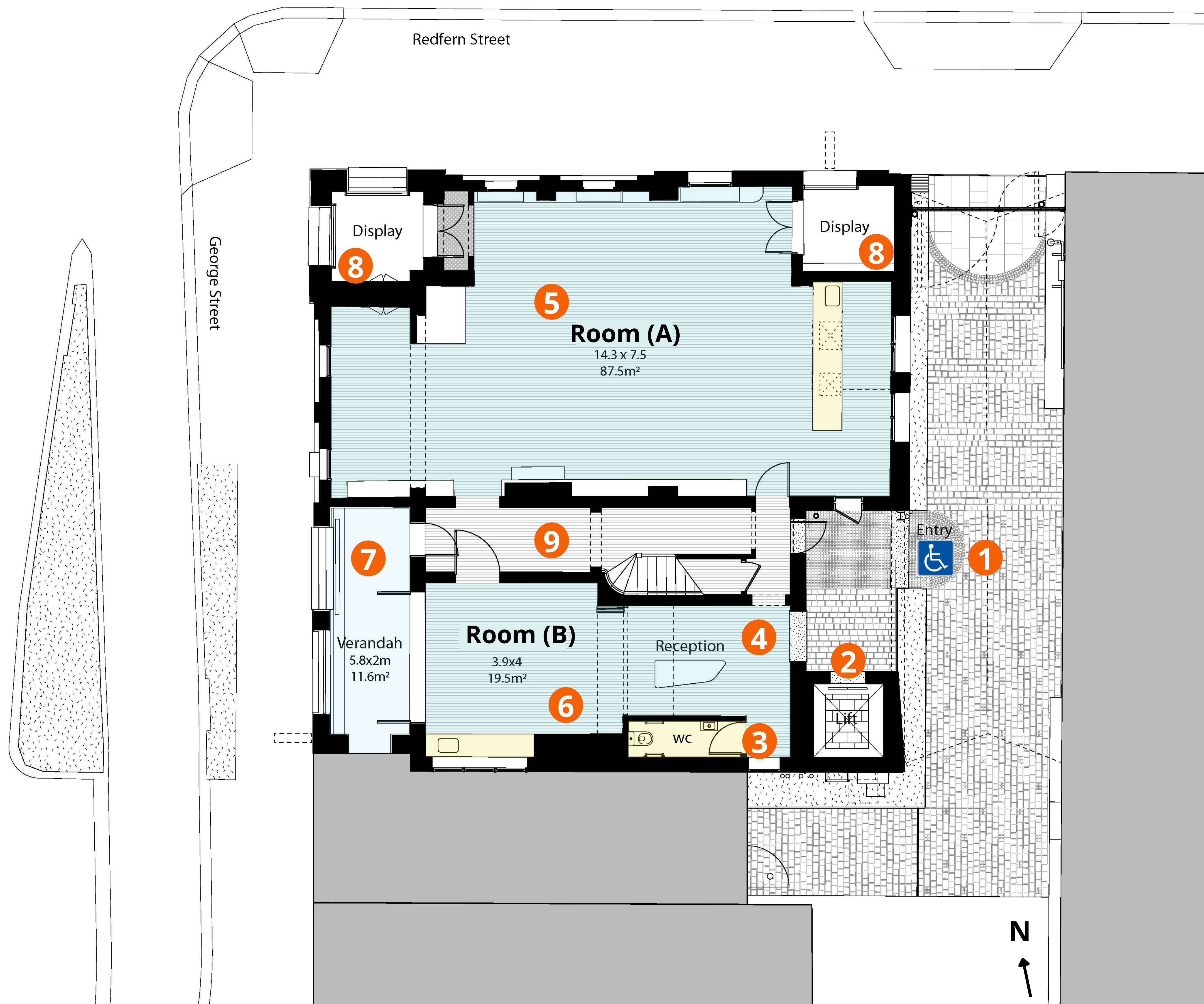


Ground floor plan



- 1 New accessible entrance
- 2 New accessible lift
- 3 Toilet
- 4 Reception area (with internal bifold doors that open to room B)
- 5 Room (A) includes floorboards, storage, service bar with sink and dishwasher (87.5 sqm)
- 6 Room (B) includes floorboards and a kitchenette (19.5 sqm)
- 7 Verandah (11.6 sqm)
- 8 Display / 'shopfront' spaces
- 9 Central hallway with stairs leading to the first floor

- Rooms designed for a range of purposes
- Amenities

First floor plan



- 1 New accessible lift and landing
- 2 Two new toilets (including an accessible toilet)
- 3 Room (C) is 77.4 sqm and includes floorboards
- 4 Room (D) is 21 sqm and includes floorboards
- 5 Storeroom (4.3 sqm)
- 6 Verandah (11 sqm)
- 7 Central hallway with stairs leading to the ground floor

- Rooms designed for a range of purposes
- Amenities



119 Redfern Street, Redfern (artist's impression of new entrance from Redfern Street)

cityofsydney.nsw.gov.au/consultations