

General Crown Reserves Draft Plan of Management



Contents

Reconciliation Statement	4
Part A Management Framework	5
1. Introduction	6
2. Land description	32
3. Legislative context	39
4. Strategic context	42
5. Community guiding principles	46
6. Basis for management	48
7. Review of the plan	54
Part B Management of community land categories	55
8. General requirements	56
9. Management targets and strategies	63
10. Park category - authorisations	69
11. General Community Use category - authorisations	73
12. Appendices	77

List of tables and figures

Figure 1. PoM process	7
Figure 2. Location plan of subject sites	32
Table 1. Summary land information	33
Table 2. Community land categorisation	51
Table 3. Community land categories by Crown reserve	52
Table 4. Permissible uses and development activities – Park Category	69
Table 5. Express authorisation of leases, licences, short-term uses and other estates – Park Category	70
Table 6. Permissible uses and development activities – General Community Use Category	73
Table 7. Express authorisation of leases, licences, short-term uses and other estates – General Community Use Category	74

Reconciliation Statement

Our vision for reconciliation is a Sydney that values the living cultures of Aboriginal and Torres Strait Islander people, embraces the truthful reflection of the history and experiences of First Nations peoples, and is dedicated to equity, opportunity and respect for Aboriginal and Torres Strait Islander communities.

In taking action, the City strives to reflect the needs and aspirations of Sydney's First Nations communities and recognise their impact and contribution. The City will listen to and elevate the voices of Aboriginal and Torres Strait Islander peoples.

Source:
City of Sydney Stretch Reconciliation Plan
November 2020 – November 2023

Part A

Management Framework

1. Introduction

What is a PoM

A Plan of Management (“**PoM**”) is a document which provides a clear set of guidelines for the short and long-term management of a parcel of community land owned by Council or Crown land under Council’s care, control and management.

A PoM outlines how a park, facility or civic space will be used, improved and managed in the future. It identifies Council’s goals and objectives for the land, and establishes the overall direction for its planning, resource management and maintenance.

- Specify the means by which Council proposes to achieve the objectives and performance targets
- Specify how achievement of the objectives and performance targets are to be assessed.

Under section 37 of the Local Government Act 1993, the PoM must also:

- Describe the condition of the land, any buildings or other improvements on the land as at the adoption of the plan
- Describe the use of the land
- State the purposes for which the land will be used.

This PoM has been prepared in accordance with and seeks adoption under the LG Act and CLM Act.

Need for the PoM

The Crown Land Management Act 2016 (“**CLM Act**”) commenced on 1 July 2018, introducing a consolidated, modern piece of legislation to govern the management of Crown land in New South Wales.

The CLM Act introduced significant changes to the management of Crown land by councils. Specifically, councils are now required to manage dedicated or reserved Crown land as if it were Public Land under the Local Government Act 1993 (“**LG Act**”). Crown reserves managed by the City of Sydney are now treated as “community land” under the LG Act requiring a PoM.

This Generic PoM addresses various Crown reserves across the Local Government Area. A Generic PoM is applicable to these spaces as they are small in footprint and exhibit similar characteristics and management requirements as outlined in **Section 6** of this PoM.

Process for preparing the PoM

Figure 1 on the following page illustrates the process for preparing the PoM that has been undertaken by the City of Sydney.

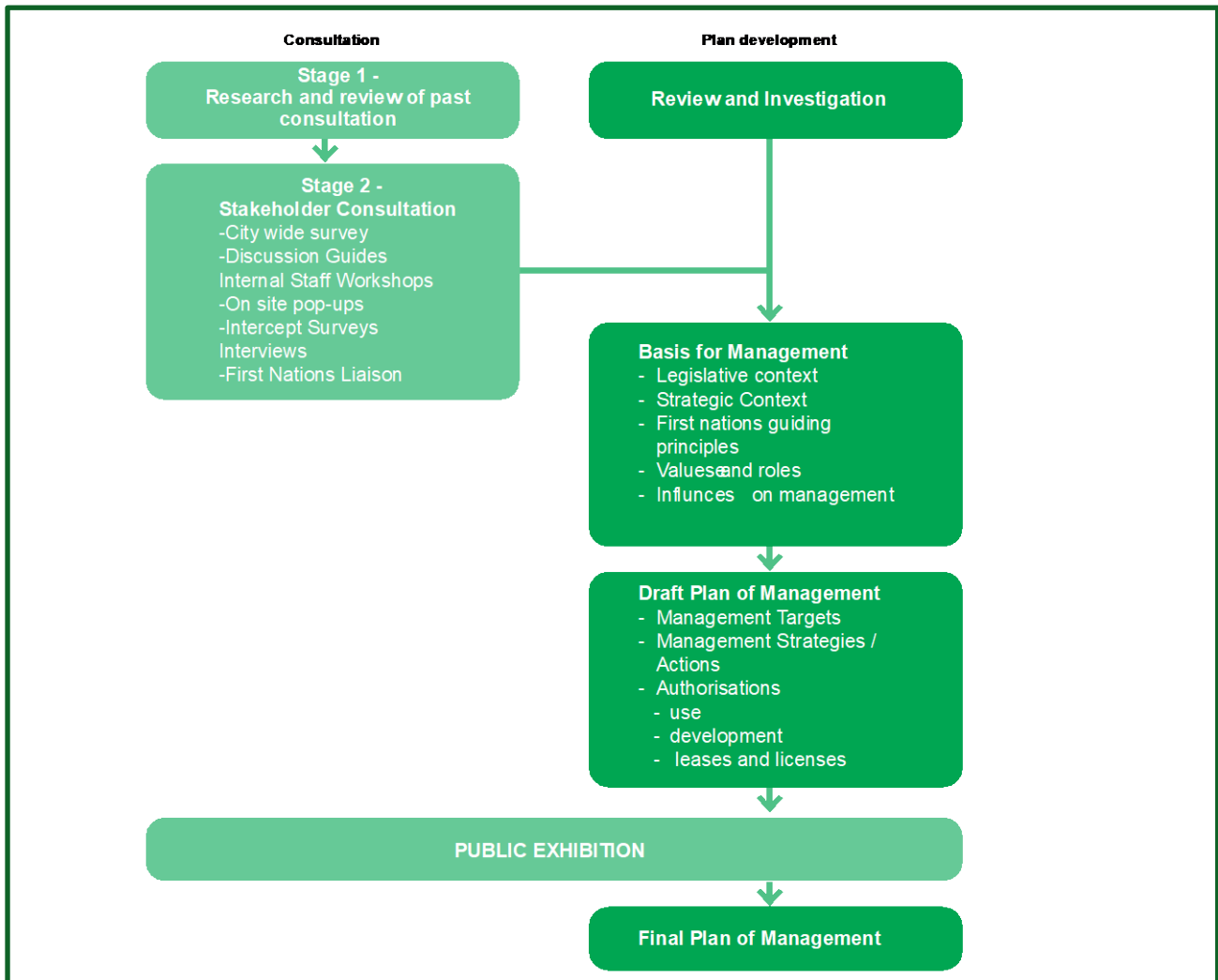
The process has integrated extensive consultation with the broader community, First Nations stakeholders and other authority stakeholders.

Purpose of the PoM

Under section 36 of the Local Government Act 1993, a PoM must:

- Categorise the land in accordance with the legislation
- Contain objectives and performance targets for the management of the land

Figure 1. PoM process



Consultation

Purpose of the consultation program

The purpose of the community engagement was to understand the community's vision for Crown land spaces, how the community use the land now and how they would like to use the land in the future.

An important aspect of the engagement program was to recognise the important relationship that Aboriginal and Torres Strait Islander peoples have to these spaces, strengthen the relationship with the Aboriginal and Torres Strait Islander communities and use the PoMs as an opportunity to further recognise and foster Aboriginal people's custodianship, living culture and connection to these places.

The opportunity to participate in the engagement program was communicated to the community via:

- A letter to local residents from the City of Sydney
- Sydney Your Say web page
- Notification signs in parks
- Decals with QR code on footpaths in parks, reserves and civic spaces
- E-newsletter sent to targeted stakeholder list.

The Engagement program

The engagement program consisted of an online survey, intercept surveys and pop-ups at some of the Crown land spaces, a conversation guide and community and staff workshops.

The surveys and pop-up boards sought to gather statistical data around community values and uses of Crown land, and the workshops provided an opportunity for more in depth discussions around Crown land within different locations across the city and specifically with the First Nations community.

Children's activity kits were also sent to schools in the area and provided an opportunity for children in years 3-6 to participate.

Detailed findings of the engagement program are outlined in the separate Crown Reserves Plan of Management Engagement Report February 2021.

What we heard – community engagement

The community engagement report noted the following highlights:

- **Strong support for the recognition and practice of First Nations peoples continuous connection to Country and important role as caretakers and knowledge holders of these spaces**
- **Public open spaces are important for mental health, wellbeing and provide a place of refuge and sanctuary for all**
- **Open, green and natural public spaces in the city are highly valued and should accommodate the needs of the growing population**
- **Accessible, safe and inclusive open spaces are important for everyone to enjoy**
- **Diverse and unique open spaces that manage our shared spaces fairly**
- **Open spaces that support wildlife and biodiversity**
- **Preserving our open spaces and safeguarding their history for the future**
- **Improving amenities in our open spaces to increase accessibility and support community use**

City-wide survey: seek to understand community values and visions for their open spaces (informs both generic and specific Plans of Management)

Discussion guides: guided opportunity for regular user groups (e.g schools, sporting clubs) to map values, and places of significance.

Internal staff workshop: internal City of Sydney staff workshop



Engagement tools to inform general plans of management

City-wide survey: opportunity to comment on general issues in addition to specific parks according to preference.

Discussion guides: guided opportunity for regular user groups (e.g schools, sporting clubs) to map values, and places of significance.

On-site pop-ups/intercept surveys: pop-ups/intercept surveys in the specific parks at specific times to capture a wide variety of feedback.

Interviews with key stakeholders: We will conduct interviews with key external stakeholders.

Work in partnership with local First Nations leaders and groups: liaison with Aboriginal and Torres Strait Islander stakeholders.



Engagement tools to inform specific plans of management

Children told us they value parks because...

"It has at least one thing everybody likes"

"Its just beautiful"

"There is space"

"They make me happy"

"When going outdoors it's nice to be in a place that is well maintained and easy to access"

"I like having time with nature"

"Everyone's welcome there"

What we heard – First Nations engagement

A series of **general principles** for the integration of First Nations input into the management of Crown land in the City of Sydney were identified during the conversations. These included:

- **Access to land as a human right of Indigenous peoples (UN Convention on the Rights of Indigenous Peoples)**
- **Recognition and respect for sacred sites and places**
- **Truth telling**
- **Talking about Country helps bring the community together**
- **The environment as living culture**
- **Importance of waterways and wetlands-rivers tell stories**
- **Creating opportunities for Aboriginal economic benefit**
- **First Nations design principles that recognise:**
 - **local cultural knowledge**
 - **sustainability and resilience**

Putting the principles into action – potential ways that these principles can be followed through by Council and others were also discussed:

The environment as living culture

Imagine having a space like this in Sydney that is real and permanent, not just digital (in response to Brett Leavy's animation – Warrane)

- Respecting ancestral sites
- Connecting places by Songlines (these include many main roads in Sydney)
- Returning Country to how it was (pre-invasion)
- A holistic approach: not just land but also water, sky, seasons, cultural calendar, plants and animals
- Implement 'Caring for Country' principles (including maintenance, planting, holistic understanding of Country, etc.)
- Important to return the knowledge of waterways and wetlands. Rivers tell stories and are an historical link that have been covered up over time

- Commitment to healing Country
- Designing with Country – a number of participants referred to the work of the State Government Architect

Language and naming

The use of language needs to go beyond naming

- Dual naming in local language based on a geographical feature
- Incorporating Gadigal language into descriptions will help the community better understand the meaning of these places
- Recognising that the first language of this place is the authentic language
- Removal of colonial names of parks

Decolonising spaces and truth-telling

We need a different way of looking at 'monuments' – as significant, empowering, culturally correct markers of the truth

- Trees of significance as monuments
- Sites of significance as monuments
- Take leadership on dealing with colonial artefacts
- Gadigal artists creating new markers of truth

Visibility

We are here - this land was never ceded

- The need to make this more visible in Sydney
- Participants referenced how New Zealand is Indigenous culture, practices and perspectives visible to international visitors
- The potential to push digital notifications when walking on different bits of land (i.e. a notification to acknowledge/welcome to country, when you are close to a sacred site or a burial ground, etc.)
- Permanent acknowledgement in each space that enlivens and engages - not just commemorative

Significance of Sydney as the site of invasion and first contact

Make these important places recognisable to Aboriginal people

- Sydney as the first frontier means it is a critical place for truth-telling and healing trauma

General Crown Reserve
Draft Plan of Management

- Recognise the cultural disruption and diaspora in Sydney
- Burial grounds and should be part of truth-telling
- Recognise places of protest

Practicing and sharing culture and supporting community

- Returning cultural fishing (e.g. Woolloomooloo and Pyrmont)
- Dedicated spaces to practice culture and interact with the community
- Dedicated ceremonial spaces practical for events
- Maker-spaces (places for creating) that are culturally correct
- Locations to busk, make things, be social and demonstrate culture
- Importance of community festivals – Yabun at Victoria Park

Economic and cultural ownership and management

- Importance of cultural ownership and intellectual property rights
- Ongoing employment and business opportunities at all levels
- Making, markets, food, trading, learning etc should be able to be practiced somewhere permanently (not a one-off event).
- There are effective working examples of shared arrangements with State Government (DPIE) who work with Metropolitan Local Aboriginal Land Council on protecting and managing places
- The Metropolitan Local Aboriginal Land Council sought that the City of Sydney provides Crown Land or City-owned sites to

MLALC for local Aboriginal community needs of culture, health wellbeing, housing and business

- The Metropolitan Local Aboriginal Land Council asked that the City of Sydney support addressing the issue of underpayment of NSW Aboriginal Land Rights fund of \$500 Million in perpetuity for all Freehold, Leasehold, Pastoral, National Parks, State Forests, Reserves and Parks as well as mineral and water

Advocacy/leadership/influence

- Encourage the City of Sydney to take on the hard issues and use position to influence other organisations including other councils and government departments
- Work with other authorities who have ownership over Crown land parcels
- Advocate and work at local, state and federal levels

Barriers

Several existing barriers to First Nations peoples cultural and spiritual use of Crown land were raised that the community want to see resolved. These include:

- Red-tape constraints to the economic use of spaces
- Barriers to the practice of living culture.

It is proposed that the City of Sydney continue to engage with the First Nations community to explore avenues to pursue the above principles and actions.

Section 5 of this plan details a series of “Community Guiding Principles”. It is proposed that ongoing management of Crown and community land pursue these principles.

Specific feedback related to City of Sydney General Crown Reserves

The engagement report identifies the following outcomes specifically related to the subject sites.

What we heard - General POM snapshot:

Park (general) - Andrew (Boy) Charlton Pool, The Domain



Number of people who commented on this park:

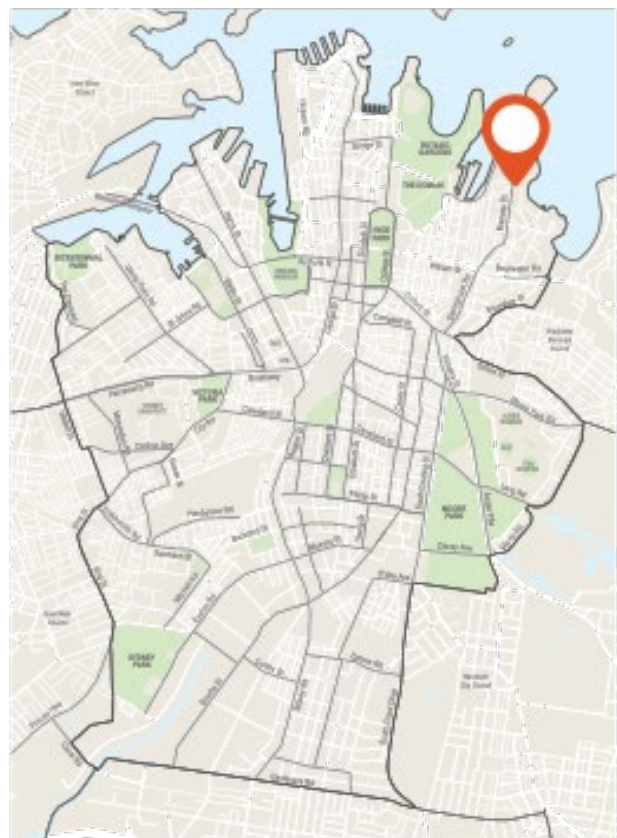


6

people completed the online survey for Andrew (Boy) Charlton Pool.

Current visitation to Andrew (Boy) Charlton Pool

- The majority of survey respondents live nearby Andrew (Boy) Charlton Pool (83%; 5 respondents), followed by respondents who visit the area (50%; 3) and work nearby (33%; 2).
- Respondents were more likely to visit the pool daily (50%; 3), followed by respondents who visit the pool weekly (33%; 3) and monthly (17%; 1).
- Respondents were more likely to visit the pool in the early morning (before 9am) (83%; 5), followed by respondents who visit in the afternoon (12pm - 4pm) and in the afternoon/ evening (6pm - 9pm) (67%; 4, respectively).



Andrew (Boy) Charlton Pool, The Domain

General Crown Reserve Draft Plan of Management

Andrew (Boy) Charlton Pool, The Domain

What people value about Andrew (Boy) Charlton Pool

Survey respondents were asked to choose what they value most about Andrew (Boy) Charlton Pool.

The majority of respondents indicated they value the pool for its beauty and its views (67%; 4 respondents).

This was followed by:

- It's a spiritual place connecting to a sense of Country (50%; 3)
- Its nature and natural elements (50%; 3)
- It's a peaceful place (33%; 2)
- It's an iconic place (33%; 2), and
- It's a place for sport (33%; 2).

One respondent indicated they love that it is a salt water pool.

Why people value Andrew (Boy) Charlton Pool

Survey respondents were asked why they chose these values, with responses including it is important to safeguard public access to this area for the future, and retaining access to large green spaces is important in the city.

Current activities at Andrew (Boy) Charlton Pool

Survey respondents were asked what are the main activities they do at Andrew (Boy) Charlton Pool.

Enjoying nature, walking or running for exercise and walking through to get somewhere else (50%; 3 respondents) were the top activities respondents do at the pool.

This was followed by:

- Meet with friends
- Watching the world go by, and
- Fitness training or classes (33%; 2, respectively).

Respondents also indicated swimming at the pools and meditating were other activities they mainly do at the pool.

Future activities at Andrew (Boy) Charlton Pool

When asked if there is anything else respondents would like to do at Andrew (Boy) Charlton Pool in the future, comments included:

- More opportunity to attend affordable cultural events
- Access purpose-built community calisthenics park, and
- Increased access to walk from the Domain around the waterfront (through the Botanical Gardens) to the Opera house.

Respondents told us...

"I do feel it is important to safeguard public access to this area for the future."

- Survey respondent

"Access to large green spaces away from traffic and experience nature is vital to recharge from city life."

- Survey respondent

"I love swimming at ABC - the views are lovely and it always feels serene. The place is well maintained and the pool is the best!"

- Survey respondent

Respondents told us...

"I would like more opportunity to attend cultural events that I can afford, as a low-income local."

- Survey respondent

"Access purpose-built community calisthenics park."

- Survey respondent

"I think it would be great to walk from the Domain around the waterfront (through the Botanical Gardens) to the Opera house for longer hours. Currently you cant go for a run through there until 7am or after sunset. They often also close this path because of the opera"

- Survey respondent

What we heard - General POM snapshot:

Park (general) - Beare Park, Elizabeth Bay



Number of people who commented on this park:



5

people completed the intercept survey for Beare Park.

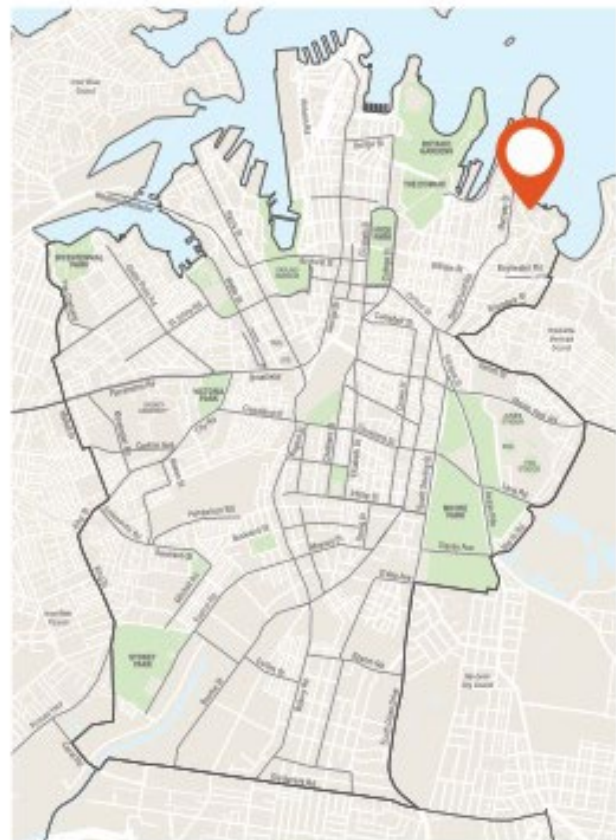


23

people participated in the community pop-ups at this park.

Current visitation to Beare Park

- 100% or 5 survey respondents live nearby Beare Park. Two respondents also indicated they visit the area (40%).
- The majority of respondents visit the park daily (60%; 3), followed by respondents who visit the park weekly (40%; 2).
- Respondents were more likely to visit the park in the afternoon (12pm - 4pm) and in the afternoon/ evening (100%; 5, respectively). This was followed by respondents who visit in the morning (9am - 12pm) (80%; 4).



Beare Park, Elizabeth bay

General Crown Reserve Draft Plan of Management

Beare Park, Elizabeth Bay

What people value about Beare Park

Overall

Across engagement, participants were asked to choose what they value most about Beare Park. As shown in Table 12, the top values as indicated by all engagement participants was it's views (57%; 16 participants).

This was followed by it's a peaceful place (50%; 14), it's a place for community (43%; 12) and its beauty (39%; 11).

Survey

Top values as indicated by survey respondents are:

- It's a peaceful place (80%; 4 respondents)
- Its views (60%; 3), and
- Its beauty (60%; 3).

Survey respondents were asked why they chose these values, with responses including they love the celebration of heritage in this space and would like to see this preserved in the future, a place that makes them feel part of the community, and it is the centre point for many people living in high density dwellings.

Pop-up

Top values as indicated by pop-up participants are:

- Its views (60%; 13 participants)
- It's a place for community (20%; 11), and
- It's a peaceful place (80%; 10).

One pop-up participant also told us they value Beare Park because it is dog friendly.

Respondents told us...

"Really love the celebration of heritage of this space - the plaques and inscriptions around the park are a wonderful celebration of the rich heritage of this area. Please continue to preserve this space as it is. It's had a lot of change recently with the new marina, which is an improvement but I hope that nothing else changes - it's perfect as it is. A tranquil harbourside enclave."

- Survey respondent

"For me they are really important. It's a place my husband and I can enjoy, and also observe younger generations enjoying themselves. Makes us feel a part of the community, not leftovers from an earlier generation."

- Survey respondent

Table 12 - What do you value most about this place? Choose up to 5

Values	Survey		Pop-ups		Total	
	#	%	#	%	#	%
Its views	3	60	13	57	16	57
It's a peaceful place	4	80	10	43	14	50
It's a place for community	1	20	11	48	12	43
Its beauty	3	60	8	35	11	39
It's a relaxing place	1	20	9	39	10	36
It's well maintained	2	40	7	30	9	32
It's easy to access and use	1	20	7	30	8	29
It feels safe	1	20	7	30	8	29
Its nature and natural elements	2	40	6	26	8	29
It's a spiritual place connecting to a sense of Country	0	0	7	30	7	25
It's family friendly	2	40	4	17	6	21
It's friendly and welcoming	0	0	5	22	5	18
It's an iconic place	0	0	4	17	4	14
Its buzzing atmosphere	0	0	3	13	3	11
It's a fun place	1	20	1	4	2	7
It's interesting	0	0	1	4	1	4
Its diverse landscape	0	0	1	4	1	4
It's a place for sport	0	0	0	0	0	0
Its formal/traditional design	0	0	0	0	0	0
Its history & heritage	*	*	8	35	-	-
It's a cultural place	0	0	**	**	-	-
Other (please specify)	2	40	1	4	3	11
Total participants (#)	5		23		28	

*This value was not an option in the intercept survey

**This value was not an option on the pop-up boards

"With most of the neighbourhood living in apartments we all meet in Beare Park. It is the centre point of the community and a lovely space to catch up with neighbours while walking the dog and letting the kids play at the same time! We often meet for a glass of wine in the evening or coffee in the morning."

- Survey respondent

General Crown Reserve Draft Plan of Management

Beare Park, Elizabeth Bay

Current activities at Beare Park

Overall

Across engagement, participants were asked what are the main activities they do at Beare Park.

As shown in Table 13, **watching the world go by** (75%; 21 participants) is the top activity as indicated by all engagement participants.

This was followed by sitting and relaxing (71%; 20), meet with friends (64%; 18) and walking the dog (64%; 18).

Survey

The majority of respondents indicated **walking through to get somewhere else** (80%; 4 respondents) was the most common activity they did at Beare Park.

This was followed by sitting and relaxing and watching the world go by (60%; 3, respectively), eat lunch (40%; 2) and meet with friends (20%; 1).

One participant indicated, as an elderly person, the paved paths and toilets are accessible and useful in getting around the park.

Pop-up

70% or 16 pop-up participants (respectively) indicated the most popular activity they do at Beare Park is **watching the world go by** and **meet with friends**.

This was followed by sitting and relaxing (96%; 15), walking the dog (57%; 13) and sight-seeing/enjoying the views (39%; 9).

Respondents told us...

"I am elderly and use a walker to assist in getting around. Paved paths are helpful as are the toilets."

- Survey respondent

"I have lived here 9 years and spend many hours a week in the park - it's why I would never want to leave!"

- Survey respondent

Table 13 - What are the main activities you do here?

Activities	Survey		Pop-ups		Total	
	#	%	#	%	#	%
Watching the world go by	5	100	16	70	21	75
Sitting and relaxing	5	100	15	65	20	71
Meet with friends	2	40	16	70	18	64
Walking the dog	2	40	13	57	15	54
Sight-seeing/enjoying the views	5	100	9	39	14	50
Enjoying nature	5	100	8	35	13	46
Picnics and BBQs	2	40	5	22	7	25
Walking or running for exercise	1	20	4	17	5	18
Eat lunch	1	20	3	13	4	14
Walk through to get somewhere else	0	0	3	13	3	11
Playing with kids	2	40	1	4	3	11
Informal games and sports	1	20	2	9	3	11
Attend cultural/community events	0	0	1	4	1	4
Cycle, scoot or skate	1	20	0	0	1	4
Formal team sports	0	0	0	0	0	0
Fitness training or classes	0	0	0	0	0	0
Attend sporting events	0	0	0	0	0	0
Other (please specify)	1	20	0	0	1	4
Total participants (#)	5		23		28	

General Crown Reserve Draft Plan of Management

Future activities at Beare Park

When asked if there is anything else respondents would like to do at Beare Park in the future, survey respondents would like to see:

- Improvements to the outdoor shower (outside of the toilet block) as it currently doesn't function properly, and
- Replacement or upgrades to the park bench located halfway between the toilet block and the harbour (tucked away in the garden).

Pop-up participants would like:

- Opportunity for paddle board and swimming at the harbour (3 comments)
- Opportunity for the park to be used as shared community space, with engaging activities and events (3)
- Fewer dogs or more dogs on leads (2), with enforced regulations for dog poo not being picked up or people fined if litter isn't picked up
- Ensure people respect the park as a shared space (2)
- Additional water fountain/bubbler for people and dogs
- Enforced restrictions on parking
- Fenced off leash areas for dogs
- Listen to music
- Make it more swimming friendly
- Bikes not obstructing views (jump bikes), and
- Expressed desire to have alcoholic beverages at the park.

Participants told us...

"The lovely cafe, modest marina serving mostly kayaks, and the small sandy strip of beach all contribute to the easy going quality of the place."

- Survey respondent

"Make it more swimming friendly"

- Pop-up participant

"Keep using them as shared spaces (we like that there is sport and fitness here)."

- Pop-up participant

"Parks with fenced off leash areas for dogs"

- Pop-up participant



Image: Pop-up at Beare Park (Source: Cred Consulting)

What we heard - General POM snapshot:

Park (general) - Dr HJ Foley Rest Park, Glebe



Number of people who commented on this park:

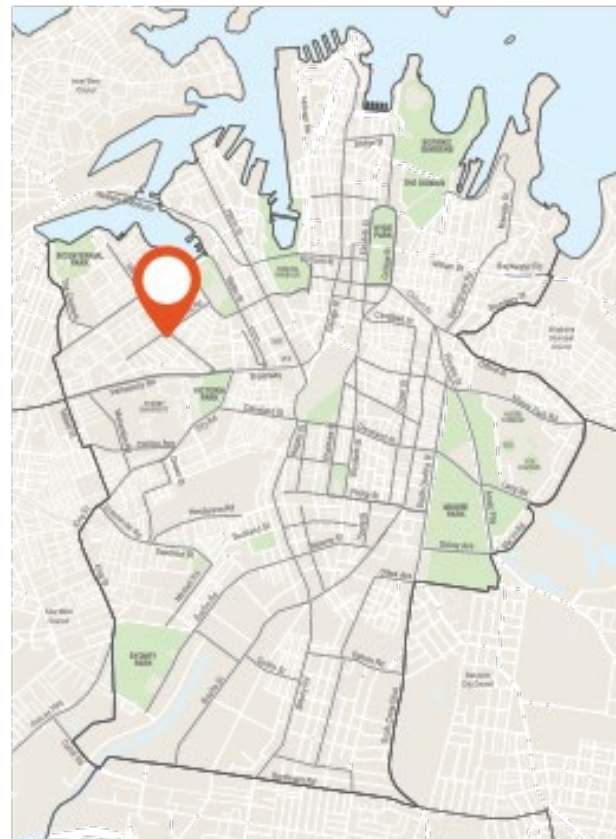


21

people completed the intercept survey for Dr HJ Foley Rest Park.

Current visitation to Dr HJ Foley Rest Park

- The majority of survey respondents live nearby Dr HJ Foley Rest Park (71%; 15 respondents), followed by respondents who visit the area (19%; 5).
- Respondents were more likely to visit the park daily (29%; 6), followed by respondents who visit the pool weekly (24%; 5).
- 19% or 4 respondents indicated they never visit this park.
- Respondents were more likely to visit the pool in the afternoon (12pm - 4pm) (70%; 14), followed by in the afternoon/evening (6pm - 9pm) (35%; 7) and in the early morning (before 9am) and morning (9am - 12pm) (25%; 5, respectively).



Dr HJ Foley Rest Park, Glebe

General Crown Reserve Draft Plan of Management

Dr HJ Foley Rest Park, Glebe

What people value about Dr HJ Foley Rest Park

Survey respondents were asked to choose what they value most about Dr HJ Foley Rest Park, Glebe.

The majority of respondents indicated they value the park for its nature and natural elements (85%; 17 respondents).

This was followed by:

- It's a relaxing place (60%; 12)
- It's a peaceful place (55%; 11)
- It's well maintained (50%; 10)
- It's a place for community (30%; 6), and
- Its beauty (30%; 6).

Other reasons why respondents value the park include:

- Good mix of shade (3 comments)
- Christmas tree (3)
- Shaded seating (2)
- Playground (2)
- Amenities including lots of options, water, soap, toilets
- The old sculpture, next to historical church
- The greenery and grass, and
- It's a respite.

Respondents told us...

"Open green, contain playground, shade seating."

- Survey respondent

"Good mix of shade"

- Survey respondent

"Trees are very important to Aboriginal culture."

- Survey respondent

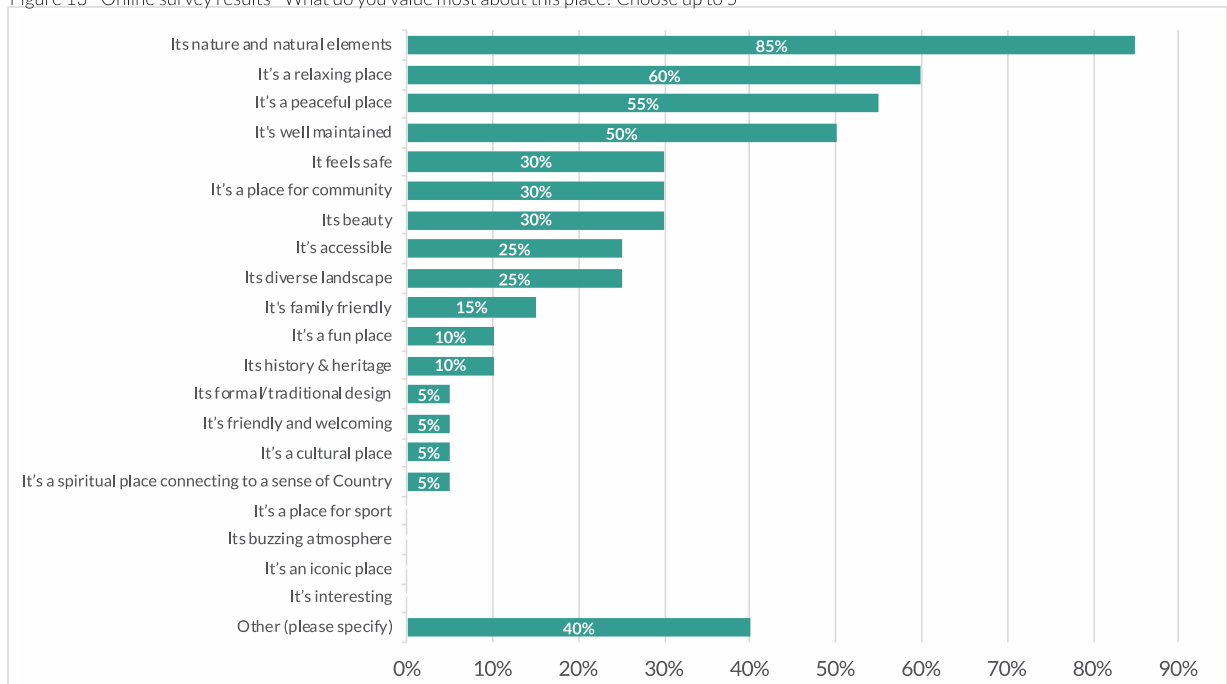
"It's relaxing and it's important to feel safe in a public area"

- Survey respondent

Why people value Dr HJ Foley Rest Park

Survey respondents were asked why they chose these values, with responses including trees are important to Aboriginal culture, it's important to have relaxing space and sense of safety in public spaces.

Figure 13 - Online survey results - What do you value most about this place? Choose up to 5



General Crown Reserve Draft Plan of Management

Dr HJ Foley Rest Park, Glebe

Current activities at Dr HJ Foley Rest Park

Survey respondents were asked what are the main activities they do at Dr HJ Foley Rest Park.

Sitting and relaxing (67%; 14 respondents) was the top activity respondents do at Dr HJ Foley Rest Park.

This was followed by:

- Walk through to get somewhere else (48%; 10)
- Enjoying nature (19%; 4), and
- Eat lunch (19%; 4).

Other activities that survey respondents do at the park include play music or reading (2 comments), going for their mental health, kick a ball, take photos and visit the markets.

Future activities at Dr HJ Foley Rest Park

When asked if there is anything else respondents would like to do at Dr HJ Foley Rest Park in the future, comments included:

- Happy as it is and would like it to remain the same (7 comments)
- Additional and increased access to toilets (2)
- More seating and shaded areas
- Minimise traffic noise
- Replant trees when they are cut down
- More things to do, no reason to stay, maybe markets, live music
- Improved lighting, and
- Opportunity for decorations for different occasions.

Respondents told us...

"Relaxation, nice as is, improved lighting, decorations for different occasions."

- Survey respondent

"More seating, shaded areas, less traffic noise, less urban, not special now."

- Survey respondent

"More things to do, there is no reason to stay, maybe markets, live music."

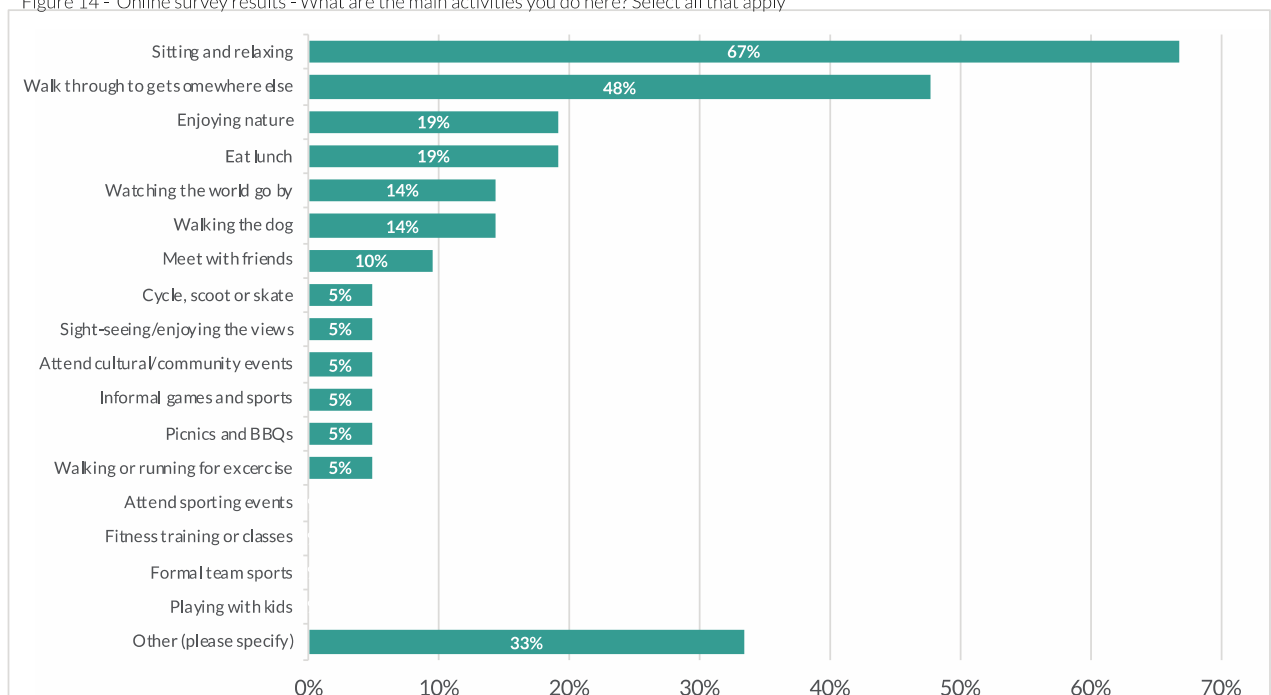
- Survey respondent

"Keep toilets open longer"

- Survey respondent



Figure 14 - Online survey results - What are the main activities you do here? Select all that apply



What we heard - General POM snapshot:

Park (general) - Glebe Foreshore Walk East



Image: Hollis Park (Source: City of Sydney)

Number of people who commented on this foreshore:

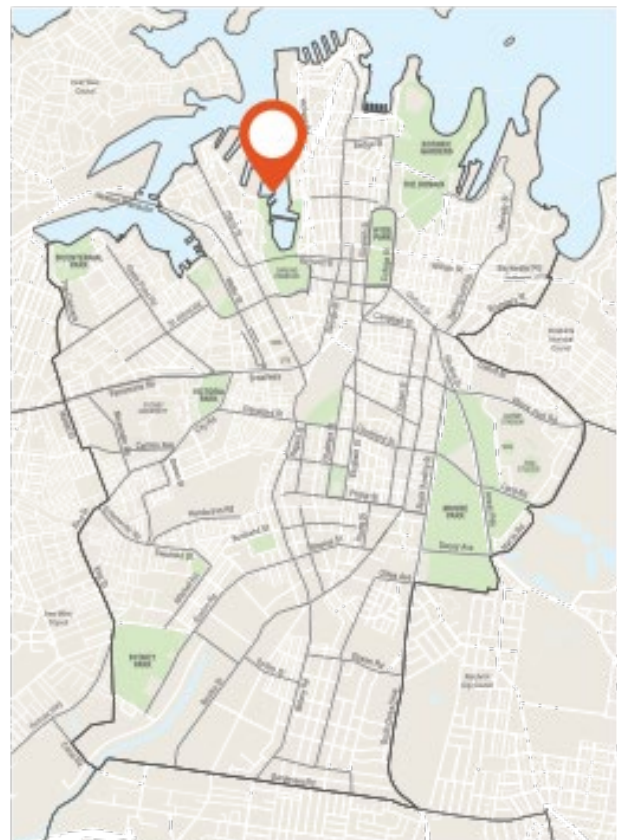


9

people completed the online survey for
Glebe Foreshore Walk East.

Current visitation to Glebe Foreshore Walk East

- The majority of survey respondents live nearby Glebe Foreshore Walk East (78%; 7 respondents). This was followed by respondents who visit the area (33%; 3) or work nearby (11; 1).
- More than half of survey respondents visit the foreshore daily (56%; 5). This was followed by 11% or 1 respondent (respectively) who visit the foreshore weekly, monthly, a few times a year, or occasionally.
- Respondents were more likely to visit the park in the early morning (before 9am) and in the afternoon (12pm - 4pm) (44%; 4, respectively). This was followed by respondents who visit in the morning (9am - 12pm) (33%; 3) and in the afternoon/evening (6pm - 9pm) (22%; 2).



Glebe Foreshore Walk East

General Crown Reserve Draft Plan of Management

Glebe Foreshore Walk East

What people value about Glebe Foreshore Walk East

Survey respondents were asked to choose what they value most about Glebe Foreshore Walk East.

The majority of respondents indicated they value the foreshore for its nature and natural elements (78%; 7 respondents).

This was followed by:

- Its views (67%; 6)
- Its beauty (56%; 5)
- It's easy to access and use (44%; 4), and
- It's a peaceful place (44%; 4).

Other reasons why respondents value the foreshore include the access to the harbour and it as unceded Aboriginal land.

Why people value Glebe Foreshore Walk East

Survey respondents were asked why they chose these values, with responses indicating the importance of:

- Preserving and safeguarding open spaces for the future (2 comments)
- Recognising Aboriginal peoples continuing connection to country
- Places like the foreshore for physical and mental health
- Supporting biodiversity, particularly bird species
- Providing a balance between the built environment and retaining open space, and
- Having open spaces for the community to connect.

Respondents told us...

"I need these places for my mental health, exercise. We need a place for biodiversity - i.e. bush, gardens. We have lost too many bird species in the inner city."

- Survey respondent

"Having a space in the community for family and friends to connect in a beautiful, clean, green, open air environment is important to me. I believe these are important to safeguard as a way of life for our future generations.."

- Survey respondent

"This is a fantastic place. I walk my dog here twice a day and she loves being off leash and being able to swim in the harbour. I also love the views and the atmosphere. Today, it was buzzing with cicadas and bird calls. It's also great to have the Bellevue Cottage café."

- Survey respondent

"They provide balance in a very urban environment where more and more buildings are blocking out the skyline and a feeling of space."

- Survey respondent

Current activities at Glebe Foreshore Walk East

Survey respondents were asked what are the main activities they do at Glebe foreshore Walk East.

Walking or running for exercise (67%; 6 respondents) was the top activity respondents do at Glebe Foreshore Walk East.

This was followed by:

- Enjoying nature (56%; 5)
- Sitting and relaxing (44%; 4)
- Sight-seeing/enjoying the views (44%; 4)
- Meet with friends (33%; 3), and
- Walking the dog (33%; 3).

Bird watching is another activity a respondent does at the foreshore.

Future activities at Glebe Foreshore Walk East

When asked if there is anything else respondents would like to do at Glebe Foreshore Walk East in the future, comments included:

- One respondent would like to see an area of bush created to sit quietly in and absorb nature
- More planted areas of native (to Glebe) plants to encourage more birds and other animals back to the parks
- Walk and relax, and
- Spaces for a BBQ with friends and family.

"I would like an area of bush created to sit quietly in and absorb nature. We need more planted areas of native (to Glebe) plants to encourage more birds & other animals back to the parks."

- Survey respondent

"Have a BBQ with friends and family"

- Survey respondent

What we heard - General POM snapshot:

Park (general) - Green Park, Darlinghurst



Number of people who commented on this park:



5

people completed the online survey for Green Park.



14

people participated in the community pop-ups at this park.

Current visitation to Green Park

- 100% or 5 survey respondents live nearby Green Park. One respondent also indicated they visit the area (20%).
- The majority of respondents visit the park daily (60%; 3), followed by respondents who visit the park monthly (40%; 2).
- Respondents were more likely to visit the park in the afternoon (12pm - 4pm) (70%; 4, respectively), followed by respondents who visit in the morning (9am - 12pm) (60%; 3).



Green Park, Darlinghurst

General Crown Reserve Draft Plan of Management

Green Park, Darlinghurst

What people value about Green Park

Overall

Across engagement, participants were asked to choose what they value most about Green Park. As shown in Table 10, the top values as indicated by all engagement participants was it's a peaceful place (58%; 11 participants).

This was followed by it's a relaxing place (42%; 8), and it's a place for community and its nature and natural element (32%; 6, respectively).

Survey

Top values as indicated by survey respondents are:

- It's a cultural place (80%; 4 respondents)
- It's a peaceful place (40%; 2), and
- It's a place for community (40%; 2).

Pop-up

Top values as indicated by pop-up participants are:

- It's a peaceful place (64%; 9 participants)
- It's a relaxing place (50%; 7)
- Its nature and natural elements (43%; 6), and
- It's accessible (36%; 5).

Participants also told us they value Green Park because it is close to facilities including the hospital and shops, it is iconic and an old park, and the diversity of people who visit.

Table 10 - What do you value most about this place? Choose up to 5

Values	Survey		Pop-ups		Total	
	#	%	#	%	#	%
It's a peaceful place	2	40	9	64	11	58
It's a relaxing place	1	20	7	50	8	42
It's a place for community	2	40	4	29	6	32
Its nature and natural elements	0	0	6	43	6	32
It's accessible	0	0	5	36	5	26
Its beauty	1	20	3	21	4	21
Its history & heritage	0	0	4	29	4	21
It's well maintained	0	0	4	29	4	21
It's an iconic place	1	20	1	7	2	11
Its formal/traditional design	0	0	2	14	2	11
It's a spiritual place connecting to a sense of Country	0	0	1	7	1	5
It's interesting	0	0	1	7	1	5
It feels safe	0	0	1	7	1	5
It's family friendly	0	0	1	7	1	5
It's a fun place	0	0	0	0	0	0
It's friendly and welcoming	0	0	0	0	0	0
Its diverse landscape	0	0	0	0	0	0
Its buzzing atmosphere	0	0	0	0	0	0
It's a place for sport	0	0	0	0	0	0
It's a cultural place	4	80	**	**	-	-
Its views	*	*	0	0	-	-
Other (please specify)	0	0	13	93	13	68
Total participants (#)	5		14		19	

*This value was not an option in the online survey

**This value was not an option on the pop-up boards, however received the highest amount of votes by survey respondents



Image: Green Park (Source: Matthew Duchesne/
Fancy Boy Photography)

General Crown Reserve Draft Plan of Management

Green Park, Darlinghurst

Current activities at Green Park

Overall

Across engagement, participants were asked what are the main activities they do at Green Park. As shown in Table 11, **sitting and relaxing** (74%; 14 participants) is the top activity as indicated by all engagement participants.

This was followed by walking through to get somewhere else (65%; 13), watching the world go by (37%; 7), meet with friends and enjoying nature (21%; 4, respectively).

Survey

The majority of respondents indicated **walking through to get somewhere else** (80%; 4 respondents) was the most common activity they did at Green Park.

This was followed by sitting and relaxing and watching the world go by (60%; 3, respectively), eat lunch (40%; 2) and meet with friends (20%; 1).

Pop-up

79% or 11 pop-up participants indicated the most popular activity they do at Green Park is **sitting and relaxing** (79%; 11).

This was followed by walking through to get somewhere else (64%; 9), watching the world go by (29%; 4) and enjoying nature 29%; 4).

Table 11 - What are the main activities you do here?

Activities	Survey		Pop-ups		Total	
	#	%	#	%	#	%
Sitting and relaxing	3	60%	11	79	14	74
Walk through to get somewhere else	4	80%	9	64	13	68
Watching the world go by	3	60%	4	29	7	37
Meet with friends	1	20%	3	21	4	21
Enjoying nature	0	0%	4	29	4	21
Eat lunch	2	40%	1	7	3	16
Walking or running for exercise	0	0%	1	7	1	5
Picnics and BBQs	0	0%	1	7	1	5
Walking the dog	0	0%	0	0	0	0
Playing with kids	0	0%	0	0	0	0
Informal games and sports	0	0%	0	0	0	0
Attend cultural/ community events	0	0%	0	0	0	0
Sight-seeing/enjoying the views	0	0%	0	0	0	0
Cycle, scoot or skate	0	0%	0	0	0	0
Formal team sports	0	0%	0	0	0	0
Fitness training or classes	0	0%	0	0	0	0
Attend sporting events	0	0%	0	0	0	0
Other (please specify)	0	0%	11	79	11	58
Total participants (#)	5		14		19	



Image: People walking through Green Park
(Source: Matthew Duchesne/ Fancy Boy Photography)

General Crown Reserve Draft Plan of Management

Green Park, Darlinghurst

Future activities at Green Park

When asked if there anything else survey respondents would like to do at Green Park in the future, key comments included:

- Improved paving along the perimeter to create sense of place (2 comments), especially on Darlinghurst Road frontage
- Increased and improved maintenance of the park
- Increased shaded seating
- Green Park in need of renewal. Dusty in summer. Muddy in winter. Footpaths cracked. Park bench slabs washed away underneath.
- Opportunity for the park to be re-landscaped with replanting of greenery
- Fix the memorial and it's surroundings, and
- Opportunity to utilise the rotunda as a cafe or bar.

Pop-up participants suggested:

- Use rotunda as a café (4 comments)
- Additional toilets (4)
- More seating (4)
- Increased cleanliness of park (4)
- Improve accessibility for patients to visit (3)
- More commercial facilities like a café (3)
- Additional recycling bins
- Manage syringes laying around, as they are particularly hazardous to children
- Additional bubblers
- Opportunity to increase community events at the park with food vans , and
- Desire for a pet friendly park.

Participants told us...

"Needs to be accessible for patients that can't walk"

- Pop-up participant

"More improved paving along the perimeter to create sense of place, especially on Darlinghurst Road frontage. Other improvements along that side to better create a pleasant space and maintain them."

- Survey respondent

"Green Park in need of renewal. Dusty in summer. Muddy in winter. Footpaths cracked. Park bench slabs washed away underneath. Some replanting needed. Park relandscaped as 20% of a small park unusable."

- Survey respondent

"Use the rotunda as a café again."

- Pop-up participant



Image: Green Park (Source: Matthew Duchesne/
Fancy Boy Photography)

What we heard - General POM snapshot:

Park (general) - Hollis Park, Newtown



Number of people who commented on this park:

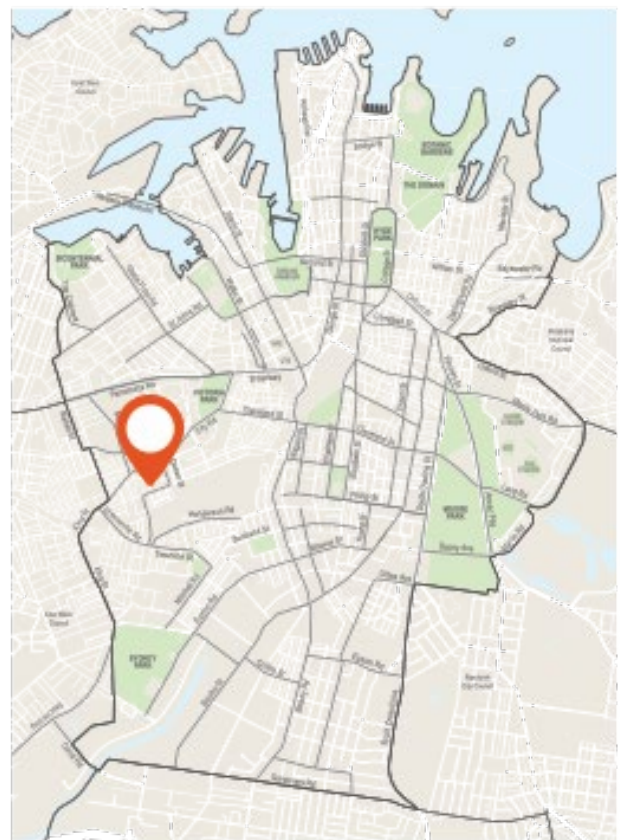


4

people completed the online survey for Hollis Park.

Current visitation to Hollis Park

- Survey respondents were more likely to live nearby Hollis Park (50%; 2 respondents). This was followed by respondents who used to live / work / visit the area but don't anymore (25%; 1).
- Respondents were more likely to visit the park weekly (50%; 2), followed by monthly (25%; 1) or never (25%; 1).
- There was an even spread of visitation times to the park, with respondents indicating they visit the park in the morning (9am - 12pm), in the afternoon (12pm - 4pm), in the afternoon/evening (6pm - 9pm) and between 3pm-6pm (25%; 1, respectively).



Hollis Park, Newtown

General Crown Reserve Draft Plan of Management

Hollis Park, Newtown

What people value about Hollis Park

Survey respondents were asked to choose what they value most about Hollis Park. Many respondents indicated they value that it's easy to access and use, it's a peaceful place and it feels safe (50%; 2 respondents, respectively).

This was followed by 25% or 1 respondent (respectively) that value:

- It's a fun place
- It's an iconic place
- It's well maintained
- It's a relaxing place
- Its formal/traditional design, and
- It's family friendly.

One respondent indicated they value it as unceded Aboriginal land.

Why people value Hollis Reserve

Survey respondents were asked why they chose these values with responses including to recognise Aboriginal peoples continuing connection to country, and the traditional European format and layout which should be enhanced.

Current activities at Hollis Park

Survey respondents were asked what are current activities they do at Hollis Park.

The top activities respondents do at Hollis Park were eat lunch, sitting and relaxing and walking the dog (50%; 2 respondents; respectively).

This was followed by 25% or 1 respondent (respectively) that indicated the main activity they do at Hollis Park include:

- Meet with friends
- Walk through to get somewhere else
- Playing with kids
- Picnics and BBQs
- Informal games and sports
- Cycle, scoot or skate
- Watching the world go by, and
- Enjoying nature.

Future activities at Shannon Reserve

When asked if there is anything else respondents would like to do at Hollis Park in the future, comments included:

- Improved maintenance of grassed areas
- Additional fencing for a designated dogs area, and
- More seating.

Respondents told us...

"Traditional european format and layout. Council spent a lot on the design and this should be enhanced."

- Survey respondent

"Council needs to better manage the grass surface by introducing a rotation system which gives sections of the grass a period of no activity. There should be additional fencing to allow an area for no dogs, or to allow an area where it is dogs only. More seating but I've already completed 2 surveys about this and been ignored."

- Survey respondent



What we heard - General POM snapshot:

Park (general) - Robyn Kemmis Reserve and Franklyn Park Community Space, Glebe



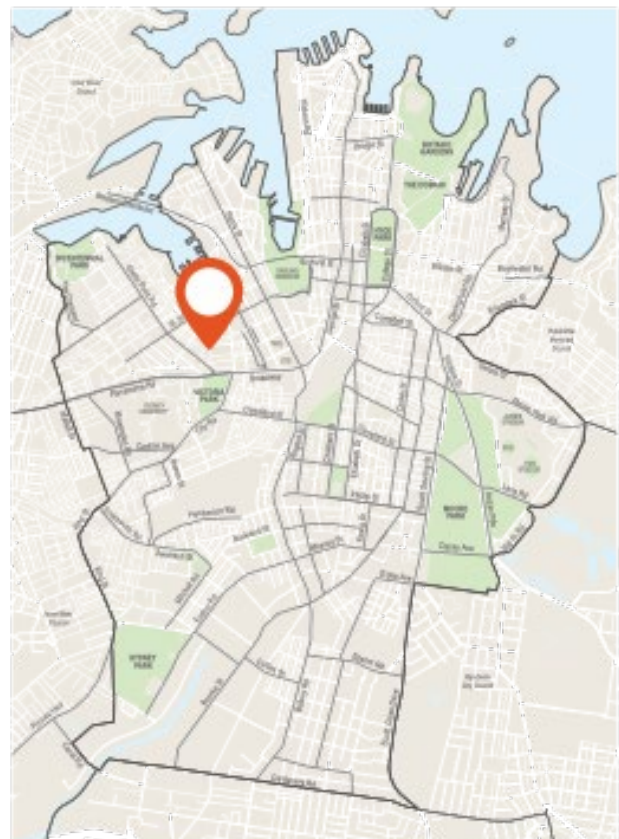
Image: Franklyn Park Community Space
(Source: City of Sydney)

Number of people who commented on this foreshore:



0

persons completed the online survey for Robyn Kemmis Reserve and Franklyn Park Community Space, Glebe.



Robyn Kemmis Reserve and Franklyn Park Community Space, Glebe.

What we heard - General POM snapshot:

Park (general) - Shannon Reserve, Surry Hills



Number of people who commented on this park:

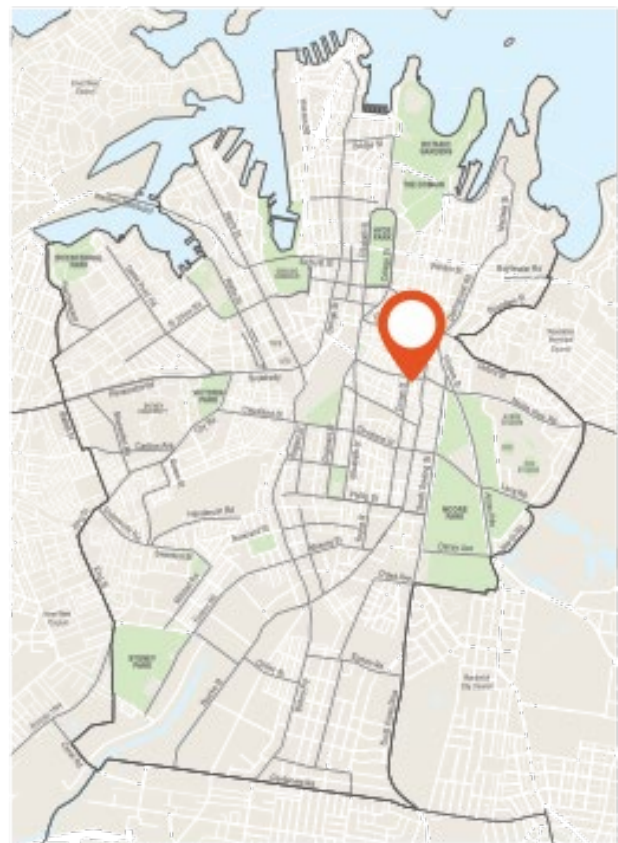


5

people completed the online survey for Shannon Reserve.

Current visitation to Shannon Reserve

- Survey respondents were more likely to live nearby Shannon Reserve (40%; 2 respondents). This was followed by respondents who visit the area and respondents who used to live / work / visit the area but don't anymore (20%; 1, respectively).
- Respondents were more likely to visit the park weekly (40%; 2), followed by a few times a year, occasionally, or never (20%; 1, respectively).
- The majority of respondents usually visit Shannon Reserve in the morning (9am - 12pm) and in afternoon (12pm - 4pm) (60%; 3, respectively). This was followed by respondents who visit in the afternoon/evening (6pm-9pm) (20%; 1).



Shannon Reserve, Surry Hills

General Crown Reserve Draft Plan of Management

Shannon Reserve, Surry Hills

What people value about Shannon Reserve

Survey respondents were asked to choose what they value most about Shannon Reserve.

Many respondents indicated they value:

- It's a place for community (40%; 2)
- It's a fun place (20%; 1)
- It's friendly and welcoming (20%;1)
- It's well maintained (20%;1)
- It's a relaxing place (20%;1), and
- Its nature and natural elements (20%;1).

Two respondents indicated they don't value anything about Shannon Reserve. One respondent indicated they value it as unceded Aboriginal land.

Why people value Shannon Reserve

Survey respondents were asked why they chose these values. Responses included:

- Concerns around loss of trees and biodiversity within the City of Sydney Council area. Desire to retain large eucalypts.
- Recognise Aboriginal peoples continuing connection to country, and
- Local park that people bump into local families, friends and kids.

Respondents told us...

"There is a fast decline in nature around the council area. Huge losses of trees and biodiversity have happened in the last ten years due to the light rail and a growing unfortunate love of council for exotic tree species. Large eucalypts are nearly going extinct in the neighbourhood. The promised 'pocket parks' along light rail development are nothing like 'nature' but mostly a few sad exotics in pots. Sometimes you may be excused for forgetting that this is Australia. Nothing replaces a tall beautifully architectural eucalypt and we are losing them without ever replacing. Don't get me wrong: I applaud City of Sydney for its drive to maintain and in places even grow green space. But it's too frequently 'overdeveloped', predictably urban design which all end up looking the same as all over the world."

- Survey respondent

"It is a park where you can show up and always bump into a local family and the kids friends. Renovated play equipment is great."

- Survey respondent

"Please show us that you actually respect the elders to whom you 'pay respect'. Show us that you actually recognise their 'continued connection to Country. Decide to include the recognised 'Traditional Custodians' in decision-making and continuing management. Defer to their judgment and desires. Engage in an act of practical reconciliation and restore stolen ownership, as far as you can. Make that resolve your reason for acting."

- Survey respondent

General Crown Reserve Draft Plan of Management

Shannon Reserve, Surry Hills

Current activities at Shannon Reserve

Survey respondents were asked what are current activities they do at Shannon Reserve.

The top activities respondents do at Shannon Reserve include:

- Playing with kids (40%; 2 respondents)
- Walk through to get somewhere else (20%; 1)
- Sitting and relaxing (20%; 1)
- Walking the dog (20%; 1)
- Cycle, scoot or skate (20%; 1)
- Watching the world go by (20%; 1), and
- Enjoying nature (20%; 1).

Future activities at Shannon Reserve

When asked if there is anything else respondents would like to do at Shannon Reserve in the future, comments included:

- Increased shade
- More trees, particularly exotic trees along paved areas
- Opportunity for nature play particularly for young teens (10-13 years), and
- Increased and improved maintenance of the grounds.

Additional comments about Shannon Reserve

Survey respondents were asked if there was anything else they would like to share about Shannon Reserve. Comments included:

- Too busy with too few alternatives around
- Improve maintenance like other parks in the City of Sydney, and
- Improve and upgrade play equipment to provide play for 10-13 year olds, as the playground is suitable for younger children.

Respondents told us...

"I would come here much more often if it provided anything but a few exotic trees lined up in a geometrical fashion and by now mostly overly developed and paved areas. I totally get the need for a playground and agree with it being there. But what we as city dwellers - and kids growing up in the city - urgently need so much more is an exposure to something that resembles actual nature, diverse, organically shaped and providing at least some degree of biodiversity"

- Survey respondent

"Too busy with too few alternatives around."

- Survey respondent

"Maintain it like other parks in the City of Sydney"

- Survey respondent

"It's targeted at younger kids. It would be great to have fun play equipment for 10-13 year olds."

- Survey respondent



2. Land description

Location and description

The General Crown Reserves are located across the City of Sydney Local Government Area. These spaces are predominantly small in size and focus on providing active and passive recreational opportunities for the local communities within close proximity.

Table 1 (pages 33-34) summarises the key land information for the subject sites.

Figure 2. Location plan of subject sites



General Crown Reserve
Draft Plan of Management

Table 1. Summary land information

Name	Res No.	Purpose	Lot	DP	Zoning	Area	Category	Notes
Andrew (Boy) Charlton Pool	500250	Public Recreation	31	39586	RE1	206.4m ²	General Community Use	Reserve Type: Dedication
Beare Park	500161	Public Recreation	1	136079	RE1	2321.35 m ²	Park	Reserve Type: Dedication
			3 & 4	68974	RE1	1707.00 m ²	Park	City-owned: Kings Cross Rotary Park –
			1	79117	RE1		Park	Beare Park
			A & B	88740				
						2167.65 m ²		
Dr H J Foley Rest Park	88997	Public Recreation	665	729285	RE1	5010.3 m ²	Park	Reserve Type: Reserve
	1000257	Baby Clinic	521	752049	RE1	881.14 m ²	Park	Reserve Type: Reserve
Franklyn Park Community Space	1011329	Community Purposes; Public Recreation	101	1086782	RE1	247.2 m ²	General Community Use/Park	Reserve Type: Reserve
Glebe Foreshore Walk East	100039	Public Recreation	626	752049	RE1	192.52m ²	Park	Reserve Type: Reserve
	1000258	Municipal Purposes; Wharfage	291	752049	RE1	192.51m ²	General Community Use/Park	Reserve Type: Dedication
	1039572	Community Purposes; Public Recreation	591	752049	RE1	352.6m ²	Park	Reserve Type: Reserve
			2	874134	RE1		Park	City-owned community land
			106	1076596				
Green Park	500436	Public Recreation	640	752011	RE1	1432.67 m ²	Park	Reserve Type: Dedication
	500439	Public Recreation	1	668227	RE1	3877.47 m ²	Park	Reserve Type: Dedication
Hollis Park	500165	Public Recreation	33-36	4656	RE1	2041.08 m ²	Park	Reserve Type: Public Park

General Crown Reserve
Draft Plan of Management

Name	Res No.	Purpose	Lot	DP	Zoning	Area	Category	Notes
	500301	Public Recreation	1	135315	RE1	2644.07 m ²	Park	Reserve Type: Dedication
			Road Reserve				N/A	Managed by City of Sydney as Roads Authority
Robyn Kemmis Reserve	1003888	Public Recreation	102	1086782	RE1	1117.06 m ²	Park	Reserve Type: Reserve
Shannon Reserve	500275	Public Recreation	7069	93609	RE1	2660.92 m ²	Park	Reserve Type: Dedication

Heritage and culture

Overview

The General Crown Reserves comprises of the following nine parks managed by the City of Sydney:

- Andrew (Boy) Charlton Pool, Sydney
- Beare Park, Elizabeth Bay
- Dr HJ Foley Rest Park, Glebe
- Franklyn Park Community Space, Glebe
- Glebe Foreshore Walk East, Glebe
- Green Park, Darlinghurst
- Hollis Park, Newtown
- Robyn Kemmis Reserve, Glebe
- Shannon Reserve, Surry Hills

The parks are situated on the traditional lands of the Gadigal people. Many of the parks and adjacent areas have been associated with First Nations peoples and the ongoing social history within Sydney.

Several of the parks are the result of the City of Sydney's commitment to providing public space for the local community combined with the growth and development of the city, that has seen industrial activities relocated out of the city. For example, Hollis Park represents the culmination of Council's attempts over many years to secure public open space in a densely populated inner-city suburb. Shannon Reserve and Glebe Foreshore Walk East emerged out of agreements with Council to create additional public space as industry left the city.

The age and origin of the parks varies widely. Hollis Park and Green Park were formally designed and dedicated over 100 years ago, whilst Glebe Foreshore Walk East was formed in 2005, following the closure of the Council depot.

Some of the parks are held in high esteem for their amenity values such as Shannon Reserve and Robyn Kemmis Reserve, whilst others such as Green Park, Beare Park, Dr HJ Foley Rest Park, and the Andrew (Boy) Charlton Pool have deeper social, historical, and associative values for the people of Sydney.

The parks represent various phases in historic development of the urban pattern and form within the City of Sydney, combined with changing attitudes and patterns of public recreation, leisure and use. Individually and collectively, the spaces are held in high regard

by the community for their open space and public amenity values.

History

By the end of the 1890's inner-city suburbs such as Glebe, Surry Hills, Newtown and Darlinghurst had become densely populated. Whilst they had a mix of housing types and allotment sizes, there was a paucity of open space. The untrammelled subdivision and housing development of the nineteenth century was characterised by speculative development. Housing in inner-city suburbs were characterised by narrow streets and tight rows of terrace housing with small rear yards and poor sanitation. The working-class residential population had little or no access to greenspace in their neighbourhoods.

Following the outbreak of the bubonic plague in 1900, resumptions, cleansing operations, demolition and civic improvement programs were initiated. By 1909, when the Royal Commission for the Improvement of the City of Sydney and its Suburbs was published, the housing 'problem' was characterised as a problem of overcrowding in certain areas and associated with the lack of open space and residential amenity. Consequently, the Council set about addressing the lack of parkland in parts of the Local Government Area. Hence, some of the City of Sydney's new parks were borne from 'slum clearance' works. Progressively during the twentieth century, the Council acquired land from private owners and government departments.

Overall Significance

The nine small parks and reserves individually and collectively demonstrate historical phases of inner-city urban development and planning combined with social shaping processes, including the changing standards and aspirations for public health, recreation and leisure through the provision of public open space.

Each place has significant heritage values and is likely to be important to the people of Sydney. Many of these parks have historical value and social associations, aesthetic values and landmark qualities evidenced through design, various plantings and monuments.

Environment and landscape

The following is an overview of the general characteristics of the General Crown Reserves. Information sheets are included in the Appendices with more specific commentary on the individual Crown reserves.

The parks can be grouped as determined by their geographical location, function and use.

Foreshore Parks

Typical of Sydney's foreshore parks to reclaimed low lying land, providing level grassed open areas bounded by a stone seawall on the harbours edge.

The Andrew (Boy) Charlton Reserve provides a glimpse of the pre-colonisation natural landscape with its rocky intertidal foreshore zone and mix foreshore vegetation.

This park provides the opportunity to access the harbour and water's edge.

Village Green/Squares

Characterised by their strong heritage identities and reflected in each park's layout, fabric, mature tree canopy and species selection.

These spaces are also characterised by adjoining public domain and active village street frontages.

The park edges vary between formalised walling, raised kerbs, planted embankments and are responsive to the surrounding topography.

Often the parks are elevated from street level requiring steps or ramps up into the park.

Neighbourhood Parks

These spaces provide small neighbourhood play and green spaces for the local community. The spaces are generally adjoining high density residential areas.

The spaces provide areas of open grass, tree canopy coverage with limited understorey plantings to the periphery and opportunities for children's play.

Generally, the parks can all be accessed from the surrounding street network.

The internal circulation path networks are generally accessible although many path edges and surfacing could be upgraded and/or

refurbished to overcome maintenance issues and to better cater for increased usage.

Reserve development

The General Crown Reserves comprising of Andrew (Boy) Charlton Pool, Beare Park, Dr HJ Foley Rest Park, Franklyn Park Community Space, Glebe Foreshore Walk East, Green Park, Hollis Park, Robyn Kemmis Reserve and Shannon Reserve have evolved over extended periods.

Capital Works upgrades:

Upgrades and park renewals as part of the City of Sydney's Capital Works Program in the last 15 years have included:

- Beare Park
- Dr HJ Foley Rest Park
- Hollis Park
- Shannon Reserve

Past studies and plans:

- Open Space, Sports and Recreation Needs Study 2016
- Beare Park Plan of Management 2006
- Glebe Foreshore Walk East Plan of Management 2006
- Dr HJ Foley Rest Park Plan of Management 2005
- Hollis Park Plan of Management 1990

Reserve purpose and community use

Crown Reserve Purpose

Crown land is to be used for the original purpose for which it was dedicated or reserved. Multiple uses of reserves are encouraged, where those uses are consistent with the original purpose of the Crown reserve.

The public purposes for the General Crown Reserves include:

Public Recreation	<ul style="list-style-type: none"> - Andrew (Boy) Charlton Pool - Beare Park - Dr HJ Foley Rest Park - Franklyn Park Community Space - Glebe Foreshore Walk East - Green Park - Hollis Park - Robyn Kemmis Reserve - Shannon Reserve
--------------------------	---

Baby Clinic	- Dr HJ Foley Rest Park
--------------------	-------------------------

Community Purposes	- Franklyn Park Community Space
---------------------------	---------------------------------

Municipal Purposes; Wharfage	- Glebe Foreshore Walk East
-------------------------------------	-----------------------------

Community usage

The General Crown Reserves provide a variety of opportunities for active and passive recreation which serve the local community and workers. The exception to this is the Andrew (Boy) Charlton Pool Crown reserve which is locked to public access from the Domain foreshore.

Due to the nature of this reserve (rocky foreshore), it is not suitable for public access and use.

Usage levels across the Crown reserves ranges from low to moderate, to intensive and reflects the size and facilities available within the spaces.

Common activities include pedestrian and cycling access; pedestrian and small boating access to Sydney Harbour; BBQs and picnics; fitness training groups and access to play spaces.

Some Crown reserves provide opportunities for off-leash dog walking (Beare Park, Glebe Foreshore Walk East and Hollis Park).

Recent user intercept surveys undertaken for the Crown Reserves Plan of Management in 2020, indicated that the most popular activities undertaken in the park by almost half of the respondents were:

- Enjoying nature
- Walking or running for exercise
- Walking through to get somewhere else
- Watching the world go by
- Sitting and relaxing
- Meeting with friends
- Walking the dog
- Sights seeing/enjoying the views
- Playing with the kids
- Cycle, scoot or skate

The majority of survey respondents were likely to live nearby the reserves and would visit the parks on a daily basis. Popular times to visit were across the day with low visitation during the afternoon/evening time period (6pm-9pm).

Event use of spaces

Most reserves have hosted community focused events varying in scale and attendance levels with the exception of the Andrew (Boy) Charlton Pool Crown reserve.

The following Crown reserves have held registered events:

Beare Park	Occasional events including NYE; picnics. The park has previously been booked for site inspections, workshops and community information sessions (3 events between 2015-17). Attendance ranges up to 500 people
-------------------	---

Dr HJ Foley Rest Park	Has hosted special markets days
------------------------------	---------------------------------

Franklyn Park Community	Offers a small space for hire
--------------------------------	-------------------------------

General Crown Reserve
Draft Plan of Management

Hollis Park	Has hosted festivals and low impact filming. Attendance has ranged up to 200 people. The City of Sydney registered 2 events between 2015-18
Shannon Reserve	Has hosted markets, promotional events, commemoration, festivals, charitable fundraising. Attendance has ranged up to 50,000 people. The City of Sydney registered 20 events between 2015-19. Shannon Reserve also hosts the following recurring events: Homeless Memorial Service, Super Furry Festival and Surry Hills Festival

3. Legislative context

Ownership and management

The General Crown Reserves are Crown reserves owned by the State of New South Wales. The City of Sydney is the Crown land manager responsible for the management of the Crown reserves. Refer to **Section 2**, pages 33-34 for further property details.

Relevant legislation

Crown Land Management Act 2016

Crown land is governed by the Crown Land Management Act 2016 (“**CLM Act**”). Historically, reserve trust managers were appointed as the custodians of Crown reserves. Upon the introduction of the CLM Act in 2018, the reserve trust regime was abolished. The management of Crown reserves is now delegated to Crown land managers, many of which are local councils.

The Objectives of the Crown Land Management Act 2016 under section 1.3 are identified as:

- Provide for the ownership, use and management of the Crown land of NSW
- Provide clarity concerning the law applicable to Crown land
- Require environmental, social, cultural heritage and economic considerations to be considered in decision-making about Crown land
- Provide for the consistent, efficient, fair and transparent management of Crown land for the benefit of the people of NSW
- Facilitate the use of Crown land by the Aboriginal people of NSW because of the spiritual, social, cultural and economic importance of land to Aboriginal people and, where appropriate, to enable the co-management of dedicated or reserved Crown land
- Provide for the management of Crown land having regard to the principles of Crown land management.

State Environmental Planning Policy – Infrastructure 2007

The State Environmental Planning Policy (Infrastructure) 2007 (“**ISEPP**”) aims to facilitate the effective delivery of infrastructure across NSW. The Infrastructure SEPP assists local government and the communities they support by simplifying the process for providing essential infrastructure.

The ISEPP has specific planning provisions and development controls for 25 types of infrastructure works or facilities including roads, emergency services, electricity delivery, parks and other public reserves and telecommunications networks.

The ISEPP outlines the planning rules for such works and facilities, including:

- Where such development can be undertaken
- What type of infrastructure development can be approved by a public authority under Part 5 of the Environmental Planning and Assessment Act 1979 (“**EP&A Act**”) following an environmental assessment (known as ‘development without consent’)
- What type of development can be approved by the relevant local council, Minister for Planning or Department of Planning under Part 4 of the EP&A Act (known as ‘development with consent’)
- What type of development is exempt or complying development.

Of relevance to the General Crown Reserves is Clause 65 that specifies that development for any purpose may be carried out without consent if the development is for the purposes of implementing an adopted Plan of Management. The clause also lists a range of ancillary developments permitted without consent.

Clause 66 provides for a range of exempt developments within a public reserve such as the construction, maintenance and repair of walking tracks, boardwalks, stairways, gates, seats shelters and shade structures.

Applicable planning controls for the reserve

Environmental Planning and Assessment Act 1979

Local Environmental Plans are statutory planning tools that set controls over development in the area to which they apply and are one of the main instruments for implementing the EP&A Act. They contain zoning controls as well as controls for heritage conservation areas and protected areas, amongst other matters.

Generally, the subject Crown reserves are zoned **RE1 Public Recreation** under the City of Sydney Local Environmental Plan 2012 (“LEP”), with the exception of:

Franklyn Park Community Space	R1 General Residential, Sydney LEP 2012
Glebe Foreshore Park East	R1 General Residential, Sydney LEP 2012 (only applies to part Lot 626 DP 752049 which encroaches into car park)

1 Objectives of RE1 Public Recreation zone

- To enable land to be used for public open space or recreational purposes
- To provide a range of recreational settings and activities and compatible land uses
- To protect and enhance the natural environment for recreational purposes
- To provide links between open space areas
- To retain and promote access by members of the public to areas in the public domain including recreation facilities and waterways and other natural features

2 Permitted without consent

Environmental protection works

3 Permitted with consent

Aquaculture; Boat launching ramps; Boat sheds; Charter and tourism boating facilities; Centre-based child care facilities; Community facilities; Electricity generating works; Emergency services facilities; Environmental facilities; Food and drink premises; Horticulture; Information

and education facilities; Jetties; Kiosks; Marinas; Markets; Recreation areas; Recreation facilities (indoor); Recreation facilities (major); Recreation facilities (outdoor); Registered clubs; Research stations; Respite day care centres; Roads; Roadside stalls; Signage; Water recreation structures; Water recycling facilities; Water supply systems

4 Prohibited

Any development not specified in item 2 or 3.

Native Title

On Crown land, Native Title rights and interests must be considered unless Native Title has been extinguished, surrendered, or determined by a court to no longer exist.

Dealings in land or water that affect (impair or extinguish) Native Title are referred to as ‘Future Acts’ and these acts must be done in compliance with the Native Title Act 1993 (Cth) (“**NT ACT**”). The NT Act specifies procedures that must be followed before future acts can be done legally.

Some examples of acts which may affect Native Title on Crown land managed by the City of Sydney include:

- The construction of new buildings and other facilities such as toilet blocks, walking tracks, tennis courts, grandstands and barbecues
- The construction of extensions to existing buildings
- The construction of new roads
- Installation of infrastructure such as powerlines, sewerage pipes, etc.
- The creation of an easement
- The issue of a lease or licence
- The undertaking of major earthworks.

On Crown land, a future act undertaken by the City of Sydney which is not covered by one of the Future Act subdivisions of the NT Act will be invalid.

Section 8.7 of the Crown Land Management Act 2016 requires that written Native Title Manager advice is required before a council Crown land manager does any of the following:

General Crown Reserve
Draft Plan of Management

- a. Grants leases, licences, permits, forestry rights, easements or rights of way over the land
- b. Mortgages the land or allows it to be mortgaged
- c. Imposes, requires or agrees to covenants, conditions or other restrictions on use (or removes or releases, or agrees to remove or release, covenants, conditions, or other restrictions on use) in connection with dealings involving the land
- d. Approves (or submits for approval) a plan of management for the land that authorises or permits any of the kinds of dealings referred to in paragraph (a), (b) or (c). Accordingly, Native Title Manager advice must be obtained prior to the approval (or submittal for approval) of a PoM that allows a dealing in (a)–(c) and the execution of any lease, licence, permit, etc. that may be authorised under that plan.

The City of Sydney's Native Title Manager has been and will continue to be consulted in all relevant aspects of Native Title pertaining to the land that is covered by this Plan of Management.

Heritage management

The planning and management of the General Crown Reserves must recognise and adhere to the requirements of Local, State and National heritage listings.

4. Strategic context

Past planning and management

Planning and management directions have been established for the General Crown Reserves through past master planning and city-wide strategic planning (Open Space, Sports and Recreation Needs Study 2016).

This Plan of Management references the Open Space, Sports and Recreation Needs Study 2016 as the current planning direction for the Crown reserves.

Key strategic directions

The following guiding strategic directions are summarised for the planning and management of the General Crown Reserves.

Open Space, Sports and Recreation Study 2016 - 27 Small Parks Upgrade Program

The study notes that small parks are an important component of the open space network providing convenient short stay recreation opportunities within a 10 minute walk from most residences.

The program aims to deliver park renewal that delivers:

- New playground equipment and park furniture
- Lighting upgrade, if required
- Access improvements, if required
- Facilities and general landscape embellishments
- Shade structures, if required
- Habitat creation
- Support Biodiversity, where appropriate
- Environmental performance to contribute to the City of Sydney's environmental targets.

The range of capital improvements recommended by this program includes:

- Replacement and upgrade of play equipment,
- Replacement and upgrade of play softfall
- Park furniture
- Shade structures
- Paths
- Lighting
- Tree / landscape planting and turf works.

Completed Small Parks Projects to date include:

- Beare Park
- Dr H J Foley Rest Park
- Hollis Park
- Robyn Kemmis Reserve & Franklyn Park Community Space (planned)
- Shannon Reserve

Demographic context

As part of the Plan of Management process Cred Consulting reviewed the demographic and recreational context of the subject reserves which provides useful background to ongoing planning and management.

Key observations are summarised following:

More residents

The City of Sydney's increasing resident population and density will result in more use and capacity pressures on all levels of the open space network, particularly the larger parks that offer opportunities for active sport.

The majority of population growth will be accommodated in various urban renewal areas. This trend will continue over the next 10-15 years.

The planning of urban renewal areas will provide opportunities to increase the open space and recreation facility network provision and provide linkages to the established open space network.

More workers and visitors

In the city centre and other concentrations of workforce population and visitors the quality of

public spaces to allow people to lunch sit and socialise as well as provision of larger spaces for lunch time sport and exercise needs to be an important consideration.

Increasing density

Open space provision will be critical to the liveability of higher density urban areas by supporting community well-being, physical activity, social interaction, and a sense of space within an otherwise intensive built environment.

More lone persons

The acceptance for high density housing in order to live close to the city centre and lone person households' places importance on the distribution of the open space network to ensure people have convenient access to a park that serves as a "backyard" and facilitates social interaction and recreation opportunities. Open space planning and management is an important component of the liveability and quality of high density developments.

More young and old people

The age structure profiles increasing in the city of families with young children, young adults, and older people are expected to be heavy users of open space network.

In 2041, 47% of the City of Sydney's residents will be between 18 and 34 years of age. This age group has high participation rates in active sports and recreation, and many reside in new high density urban renewal areas which suggests higher density communities could potential be very active communities and will require opportunities for physical activity and social interaction.

The open space network needs to be flexible and provide a diverse offer of recreational, social, cultural and creative activities and facilities to cater for various age, cultural and income groups.

Total population

City of Sydney is forecast to grow by 949,824 people or 37% in 2041. The highest growth will be in Green Square-City South, CBD-Harbour, Chinatown-CBD South and Redfern Street villages respectively.

Service age structure

Decrease in the proportion of 25 to 49 year old people

While the working age population will remain the largest demographic group to 2041, the proportion of this age group decreases across the Local Government Area ("LGA"). The villages with the most significant change in this age group proportion will be King Street (-5%), Glebe Point Road (-4%), Harris Street (-4%), Macleay Street-Woolloomooloo (-4%) and Oxford Street (-4%).

Increase in the proportion of 60 to 84 year old people

The proportion of people aged between 60 and 84 years is forecast to increase by 2% in 2041. While the increase in proportion of 60 to 69 year old people is consistent across all villages within the LGA, the increase in proportion of 70 to 84 year old people varies. The villages with the highest increase in proportion of 70 to 84 year old people will be Glebe Point Road (+4%), Crown – Baptist Streets (+3%), Harris Street (+3%), Macleay Street-Woolloomooloo (+3%) and Oxford Street (+3%).

Households

The total number of dwellings in the LGA is forecast to increase by 35%. The villages that will see the highest increase in number of households are CBD-Harbour, Green Square – City South and Redfern Street. Villages including CBD-Harbour and Redfern Street with a high number of Crown lands will cater to an increasing number of households by 2041.

Household type

The overall LGA is forecast to see a high increase in households with one parent families and group households. However, there are variations in forecast household type across the villages including those within this PoM study area:

- Chinatown – CBD South, Harris street and Crown – Baptist Streets will see a high increase in one parent families
- Glebe point road will have an increase in lone person households and a decrease in group households
- King Street will have a high increase in other families, group households and couples without dependants

- Macleay Street – Woolloomooloo will have an increase in other families, followed by one parent families
- Oxford Street will have an increase in other families, followed by lone person households

Overnight and daily visitors

The City of Sydney is Sydney's premier metropolitan core that contains regional and village level services including retail to health, education to entertainment. The Sydney CBD and surrounds are also attractive places for tourists to visit, explore and stay overnight.

Given the diversity of offerings across the LGA, visitors are distributed to places such as Oxford Street, Kings Cross/Darlinghurst, Newtown, the Rocks, Chinatown and Central Station. Accommodation is provided throughout the LGA via short term rental accommodation as well as through traditional hotel and hostel services. The City of Sydney experiences 680,000 daily and overnight visitors for range of purposes and services including:

- Shopping
- Health and education
- Recreation and entertainment
- Accommodation
- Personal business
- Work related business.

It is forecast that this will grow to approximately 860,000 by 2036. (*Source: Infrastructure Baseline Assessment, City of Sydney, 2019*)

Social and cultural considerations (as per 2016 census data)

Cultural diversity

47.7% of City of Sydney population are born overseas with top countries of birth being China, United Kingdom and Thailand. Village areas with highest born overseas rates include Chinatown and CBD South (76%), Harris Street (57.1%) and Green Square and City South (54.7%).

36.1% of City of Sydney population speak a language other than English with top languages being Mandarin, Thai and Cantonese. Village areas with highest percentage of other language speakers include Chinatown and CBD South (71%), Harris Street (47.1%) and Green Square and City South (45.9%).

Low-income households

18.2% of households in City of Sydney LGA are characterised as low-income households. Village areas with highest percentage of low-income households include Redfern Street (29.5%), Chinatown and CBD South (17.5%) and King Street (15.6%).

Socio-Economic Indexes for Areas (SEIFA Index)

City of Sydney has a SEIFA index 1,027. Village areas with lowest SEIFA scores being Chinatown and CBD South (940.2) and Redfern Street (970.2).

City of Sydney Policy and Strategy framework

The City of Sydney has developed an extensive range of policies which provide guidance to Council decision-making. A number of these influence planning and management decision-making for open space and must be referred to in conjunction with this Plan of Management.

The City of Sydney has also developed a range of strategies focused on specific issues. While strategies are high-level guideline documents and usually carry less influence than policies, they can provide important references for the planning and management of open space.

Generally, policy guidance for the management of specific issues shall take precedence where no guidance is provided in the plan. However, all decision-making, and ongoing management must also have regard to the conservation of the specific park values and application of the core objectives of the applicable community land category/categories.

A summary of the key policies and strategies is provided in the Appendices.

Future Policy and Strategy guidance

In addition, it is intended that future policy and strategy development should also inform specific aspects of reserve planning and management as applicable.

5. Community guiding principles

The City acknowledges the Gadigal of the Eora Nation as the Traditional Custodians of our local area, and we acknowledge their continued connection to Country. We pay respect to Aboriginal and Torres Strait Islander Elders past, present and emerging.

Community and place

These are the principles for our plans of management for Crown and community land. They were developed by listening to our communities – Aboriginal and Torres Strait Islander people, community gardeners, bushcare contributors, local residents, school children, city workers and visitors. And they reflect their values.

These principles are guided by the world view of Aboriginal people. They reframe our systemic relationship with the land. Since invasion, the relationship between people and land has been disrupted with little respect for the land, animals, waterways, and First Peoples. We've seen the extinction of plants and animals and damage to waterways and land. Aboriginal lives have been lost in trying to protect country. By challenging our approach in this way, we hope to cause no further harm and begin to heal.

The City of Sydney has an important role as caretaker of these places. We will consciously consider these principles in the decisions we make for the Crown and community land we are responsible for. This includes how we maintain, change, and manage this land.

Aboriginal world view of Country – First Nations workshop participant

Country is our identity; spiritually, culturally, physically, and socially. We refer to Country as part of the family. We speak to Country; we sing to Country; and we dance for Country.

Increasingly we worry for Country and seek greater protection measures to carry out our cultural obligations to the land and waterways. These are our fundamental rights and cultural responsibilities in protecting country as First Nations People.

We are on Gadigal Country

These principles are founded in the understanding of **Country** in the worldview of the Aboriginal and Torres Strait Islander peoples. This understanding of Country includes the landscape – land, water and sky, the plants and animals, and the relationship between these. Aboriginal and Torres Strait Islander people responsibility for care of Country and the continuation of these relationships. Country has existed in this place for thousands of generations. Country precedes the colonial boundaries and definitions of 'Crown land'. We acknowledge the responsibility that First Nations People have in the carriage of their living cultures including access to land for practising culture. Crown and community land should bring social, spiritual, and economic benefit to First Nations People.

We commit to truth-telling and decolonisation

Gadigal Country was never ceded. In managing the Crown and Community land in Gadigal Country, we recognise the significance of this land as the site of invasion.

We work towards telling the history of these places with honesty and acknowledge the negative impacts caused to Country and to the people.

We endeavour to cause no further harm to Aboriginal people and the relationship they hold to the land.

We challenge ourselves to decolonise our approach to managing Crown and community land. This is evident in the decisions we make as we manage these places.

We value how important these places are to people's wellbeing

Crown and community land are a place of refuge and respite in an intensely urban environment. These places have cultural and community significance to many people. They are places of shared identity and pride, of community connection and celebration, and of protest and social transformation. They must be welcoming to all people and will provide equity of access to all to enjoy. We strengthen the connections between and within these places.

We are guided by Country and strive to heal and care for it

We learn about how this Country has been cared for thousands of generations. We respect the natural landforms, waterways, and endemic species. We work to heal places that have suffered degradation. We support these places to play their role in the health of the whole environment.

We protect these places for future generations

We accept our role as caretakers of these places. These places must benefit the community now and in the future. As we face a changing climate and growing population, we make decisions that prepare these places and ensure their continued health into the future.

Guiding documents

UN Declaration on the Rights of Indigenous Peoples

Principles of Co-operation with Metropolitan Local Aboriginal Land Council

City of Sydney Aboriginal and Torres Strait Islander Protocols

City of Sydney Reconciliation Action Plan 2021

City of Sydney Busking and Aboriginal and Torres Strait Islander Cultural Practice Policy

Design with Country – NSW State Architects

6. Basis for management

Values and roles of the General Crown Reserves

Community values and roles have guided the development of this Plan of Management. Values are the qualities and roles of the parks and reserves that the community wishes to protect, conserve, and enhance. These have been identified through:

- Consideration of past plans of management and master planning for the site
- Past and current community engagement
- Liaison with City of Sydney staff
- Site appraisal.

In brief, these values and roles are identified as:

1.0 Identity Character and Experiencing the Place

- A meaning of the place that resonates with Country
- Places which signpost and celebrate local, natural and cultural history
- Places with a strong character and identity
- Valued greenspaces

2.0 Access, Connections and Accessibility

- Well-connected spaces to adjoining neighbourhoods and to district and regional users
 - Wayfinding that seamlessly aids access and use
 - Places that are clear, easy and safe to move around
 - An appropriately lit environment
 - Places that are not compromised by parking and vehicle access
-

3.0 Community Use and Activation

- Places of respite for users and adjacent residents
- Amenities that enable community interaction
- Spaces and facilities that support youth use of the parks
- Places for dog walking and exercise
- Places that recognise and celebrate First Nations living culture
- Places for events
- Places that provide access to community venues
- Places that are open and usable by all members of community
- Safe places to visit day and night
- Places that provide access to public amenities

4.0 Facilities and Built Infrastructure

- Park elements that support park use and create an attractive character
- Play facilities for the local community
- Underground infrastructure

5.0 Environment and Sustainability

- Resilient landscaping to future-proof our greenspaces
- Landscaping and planting that reflects the original natural environment
- Places of diverse habitats
- Places that are connected to support biodiversity
- Places that are cool, calm and comfortable in summer heat
- Established plantings which contribute to the park setting and habitat

General Crown Reserve Draft Plan of Management

- Places exhibiting water sensitive urban design
- Places exhibiting sustainable energy management
- Places exhibiting sustainable waste management practices

6.0 Culture and Heritage

- Places that represent Aboriginal people and their living culture
- Places which are a conservatory of natural and cultural heritage
- Places that provide the community access to cultural expression and awareness through arts and culture
- Places that provides a canvas for arts and culture

7.0 Management and Maintenance

- Places which are clean, well-maintained and carefully managed
- Facilities that continue to service and meet the community's needs
- Appropriate leases and licences

Open space classification and rationale for this plan

The General Crown Reserves subject to this Plan of Management form a diverse but complementary group of open space within the City of Sydney Local Government Area.

Majority of the Crown reserves are classified as “Neighbourhood” spaces under the City of Sydney’s Open Space, Sports and Recreation Needs Study 2016 – Volume 5 appendices - “Open Space Hierarchy Classifications”.

The exceptions are:

- Dr HJ Foley Rest Park - classified as “Local”
- Glebe Foreshore Walk East –classified as “Small Neighbourhood”
- Green Park - classified as “Local”

The Crown reserves can be further considered under their individual settings and related roles:

Foreshore spaces

- Andrew (Boy) Charlton Pool foreshore
- Beare Park
- Glebe Foreshore Walk East

Village Green / Squares

- Dr HJ Foley Rest Park
- Green Park
- Hollis Park
- Shannon Reserve

Neighbourhood parks

- Robyn Kemmis Reserve and Franklyn Park Community Space

Reflecting Crown reserve purpose

Under the Local Government Act 1993 (“**LG Act**”), all community land is required to be categorised. Where the land is owned by Crown Lands, one or more categories may be assigned that should align with the public purpose for which the land is dedicated or reserved.

The public purposes for the subject Crown reserves are **Public Recreation, Community Purposes, Municipal Purposes, Wharfage and Baby Clinic**.

Current / existing use

In accordance with Crown Lands requirements, the City of Sydney has established initial categorisations for the General Crown Reserves. The application of these categorisations is consistent with the way in which these Crown reserves are currently used and has been endorsed by Crown Lands.

Any change to the initial categorisation to support a future use should be altered via an amendment to the Plan of Management and in accordance requirements under the LG Act.

Table 3 (page 53) identifies the community land categorisations in the context of the Crown reserves and adjoining City-owned community land contained within this Generic Plan of Management.

Characteristics of the land

The physical characteristics of the land must be considered in applying community land categorisations. Land that possesses a significant geological feature, geomorphological feature, landform, representative system or other natural feature should be considered for categorisation as one of the Natural Area categories. In such a case the plan should describe the related characteristics of the land.

For the General Crown Reserves there are no site characteristics that would justify Natural Area categorisation.

Likewise, where land is of Aboriginal or historical heritage significance Council should consider whether Area of Cultural Significance is applicable. This should consider whether there are heritage listings or controls on the land that address heritage conservation. Where such protections are not afforded and a site warrants heritage significance, the Area of Cultural Significance category may be applicable.

For the General Crown Reserves, **Section 2** describes the heritage characteristics of the land, and the applicable listings and controls. These will be considered in all management decisions related to the land. The additional layer of Area of Cultural Significance categorisation is not deemed to be required.

Proposed community land categorisations

Table 2 outlines the guidelines for categorisation as listed in the Local Government (General) Regulation 2005, Part 3 - categorisation, use and management of community land for the applicable categories to the General Crown Reserves. Under the guidelines for each

category, their interpretation and application to the General Crown Reserves is explained.

In addition, the core objectives and purpose (as outlined in the Local Government (General) Regulation 2005) are also listed.

Table 2. Community land categorisation

Guidelines for categorisation and application to the General Crown Reserves	Core objectives for management
Park <p>Land should be categorised as a park under section 36 (4) of the Act if the land is, or is proposed to be, improved by landscaping, gardens or the provision of non-sporting equipment and facilities, for use mainly for passive or active recreational, social, educational and cultural pursuits that do not unduly intrude on the peaceful enjoyment of the land by others</p> Application <p>The Park categorisation applies to dedicated areas of greenspace contained within the Crown reserves and adjoining City-owned community land (this does not apply to the Road Reserve located within Hollis Park and managed by the City of Sydney as Roads Authority). The categorisation enables these spaces to be used and developed to complement social and passive recreational activities.</p>	<p>The core objectives for management of community land categorised as a park are:</p> <ul style="list-style-type: none">(a) to encourage, promote and facilitate recreational, cultural, social and educational pastimes and activities, and(b) to provide for passive recreational activities or pastimes and for the casual playing of games, and(c) to improve the land in such a way as to promote and facilitate its use to achieve the other core objectives for its management.
General Community Use <p>Land should be categorised as general community use under section 36 (4) of the Act if the land:</p> <ul style="list-style-type: none">(a) may be made available for use for any purpose for which community land may be used, whether by the public at large or by specific sections of the public, and(b) is not required to be categorised as a natural area under section 36A, 36B or 36C of the Act and does not satisfy the guidelines under clauses 102–105 for categorisation as a natural area, a sportsground, a park or an area of cultural significance.	<p>The core objectives for management of community land categorised as general community use are to promote, encourage and provide for the use of the land, and to provide facilities on the land, to meet the current and future needs of the local community and of the wider public:</p> <ul style="list-style-type: none">(a) in relation to public recreation and the physical, cultural, social and intellectual welfare or development of individual members of the public, and(b) in relation to purposes for which a lease, licence or other estate may be granted in respect of the land (other than the provision of public utilities and works associated with or ancillary to public utilities).

General Crown Reserve
Draft Plan of Management

Guidelines for categorisation and application to the General Crown Reserves

Core objectives for management

Application

The General Community Use categorisation applies to the footprint of the Walter Burley Griffin Incinerator (Glebe Foreshore Walk East) and Franklyn Park Community Space (Glebe). The categorisation enables these facilities to be leased/licenced for complementary commercial, social and community uses.

An exception to this is the Andrew (Boy) Charlton Pool Crown reserve which remains inaccessible to the public. This categorisation will enable the land to be leased/licenced to foreshore authorities who may require access.

Table 3. Community land categories by Crown reserve

Name	Res No.	Purpose	Overall area	Category
Andrew (Boy) Charlton Pool	500250	Public Recreation	206.4	General Community Use
Beare Park	500161	Public Recreation	2,321.35	Park
				Park (City-owned land)
Dr H J Foley Rest Park	88997	Public Recreation	5,010.3	Park
Dr H J Foley Rest Park	1000257	Baby Clinic	881.14	Park
Franklyn Park Community Space	1011329	Community Purposes; Public Recreation	247.2	General Community Use/Park
Glebe Foreshore Walk East	100039	Public Recreation	192.52	Park
	1000258	Municipal Purposes; Wharfage	192.51	General Community Use/Park
	1039572	Community Purposes; Public Recreation	352.6	Park
				Park (City-owned land)
Green Park (Part)	500436	Public Recreation	1,432.67	Park
Green Park (Part)	500439	Public Recreation	3,877.47	Park
Hollis Park	500165	Public Recreation	2,041.08	Park

General Crown Reserve
Draft Plan of Management

Name	Res No.	Purpose	Overall area	Category
Hollis Park	500301	Public Recreation	2,644.07	Park
Robyn Kemmis Reserve	1003888	Public Recreation	1,117.06	Park
Shannon Reserve	500275	Public Recreation	2,660.92	Park

7. Review of the plan

Lifespan of the plan

If the Plan of Management (“**PoM**”) is to remain relevant in the future it is essential that its implementation is reviewed on a regular basis to ensure any relevant changes are incorporated.

Changes that may need to be addressed include:

- New legislation
- Changes in community values
- Inclusion of additional land
- Project priorities
- Funding resources
- New opportunities for future upgrades.

Given that community expectations and requirements change over time, this plan also needs to have some flexibility to adapt to any changes of circumstance.

Other triggers for review / update

Should a major development or works be proposed that is not represented in the authorised uses and developments listings, the PoM will require amending.

Should changes in categorisation be proposed, the PoM will require amendment, re-exhibition and the need to undertake a public hearing prior to adoption.

Process for review

It is recommended that the plan be reviewed in the following sequences and time spans:

Annually: monitor progress of PoM

Every five years: undertake a review of all values based on revised analysis, issues and amended planning legislation
review outcomes against survey information, photographic record and register of correspondence
review and amend the PoM, where required

Every ten years: review of the PoM

Part B

Management of community land categories

8. General requirements

This section sets out the specific requirements for the individual management areas located within the General Crown Reserves and is applicable to all community land categories, as outlined in **Section 6** of this Plan of Management (“**PoM**”).

Management Framework

A Management Framework is provided in **Section 9** of this PoM. It provides a decision-making framework for the future management of the General Crown Reserves and addresses the requirements of section 36 of the Local Government Act 1993 (“**LG Act**”).

Management targets

The framework sets out management targets that define a series of “desired outcomes” for the management of the General Crown Reserves. The outcomes seek to conserve and enhance the values of the General Crown Reserves and address management challenges and opportunities identified by the community and City of Sydney.

Means of implementation

In response to the identified management targets, the means of implementation define recommended strategies to be implemented over the life of this PoM.

Assessment indicators and measurement

A means of assessing the achievement of the identified management targets is provided for ongoing monitoring and evaluation.

Permitted development and use

Section 36 of the LG Act states that a PoM must expressly authorise any proposed uses and development activities on community land.

The City of Sydney encourages a wide range of uses on community land and intends to facilitate uses which increase the activation of the land, where appropriate. The use of community land is often supported by appropriate ancillary development such as playground equipment, amenity blocks or food kiosks.

The general types of uses which may occur on community land categorised as Park and General Community Use and the forms of development generally associated with those uses, are set out in **Sections 10-11** within this PoM.

Any proposal for the development and use of buildings, structures and spaces at the General Crown Reserves will be considered on merit and benefits to the community and balanced against physical constraints, the amenity of adjoining residents and land uses.

Restrictions on management of Crown land

The City of Sydney is the Crown land manager of the Crown reserves described within this PoM in accordance with the legislation and conditions imposed by the minister administering the Crown Land Management Act 2016. The use and development of the land described in this PoM must:

- Be consistent with the purpose for which the land was dedicated or reserved
- Consider native title rights and interests and be consistent with the provisions of the Commonwealth Native Title Act 1993

General Crown Reserve Draft Plan of Management

- Consider the inchoate interests of Aboriginal people where an undetermined Aboriginal Land Claim exists
- Consider and not be in conflict with any interests and rights granted under the Crown Land Management Act 2016
- Consider any interests held on title.

Legislative requirements

The Sydney Local Environmental Plan 2012 (“**LEP**”) specifies the range of uses and activities that may be permitted on the land, in accordance with the relevant zoning and associated objectives. Several uses are also set out in the Local Government (General) Regulation 2005.

Guidelines and core objectives of the community land category

Under the LG Act, uses and the development of community land must be consistent with the guidelines for categorisation, the core objectives of each category, and any other additional objectives that Council proposes to place on the community land categories.

Consistency with Council adopted policies and strategies

Relevant Council policies and strategies as at the date of adoption of this PoM are identified in the Appendices and have been used to guide the outcomes of this PoM.

Council’s adopted policies and strategies will continue to develop after the preparation of this PoM. Management of Council assets, and their development will consider the existing policies and strategies frameworks at the relevant time.

In addition, activities that involve the representation or depiction of Aboriginal and Torres Strait Islander peoples living culture must also adhere to Indigenous Cultural and Intellectual Protocols.

refurbishment of buildings, structures and civil infrastructure which support the desired use of the General Crown Reserves.

Such buildings, structures and civil infrastructure will not materially harm the use of the land for any of the purposes in which it has been dedicated or reserved and will be consistent with the:

- Core objectives of the categories that apply to the land
- Crown reserve purpose
- LEP and any other applicable Environmental Planning Instruments
- Applicable master plans, asset management plans and any subsequent detailed design plans.
- Consistent with the objectives of this PoM, development activities must also include sustainable initiatives and measures, where feasible.

Native Title and Public Works

Where it is proposed to construct or establish a public work or lease or licence activities on reserved or dedicated Crown land, where Native Title is not extinguished, prior to approval, the City of Sydney will ensure that Native Title Manager advice is sought to ensure that the works can be validated under the Native Title Act 1993 and the appropriate native title holders, claimants or NTS Corp will be provided the appropriate procedural rights as required under the Native Title Act 1993.

Assessment and approval of permissible uses and development activities

The authorisation in a PoM gives ‘in principle’ support for uses and development activities consistent with the objectives for land categorisation to proceed to development assessment under the Environmental Planning and Assessment Act 1979 (“**EP&A Act**”).

This PoM does not in itself imply or grant consent for uses or development activities. Any proposed uses and development activities which are consistent with this PoM must still be referred for development consent and where required,

Buildings and structures

Express authorisation

This PoM expressly authorises the development of new buildings, structures and civil infrastructure, and the redevelopment /

be advertised widely for information and invitation to comment. Any subsequent application for development consent would be supported by and assessed against this PoM.

Prohibited activities

Activities and uses that are inconsistent with the Crown reserve purpose or core objectives associated with the applicable community land category are prohibited.

Certain activities at the General Crown Reserves may also be prohibited by the applicable land use zoning. The City of Sydney may prohibit certain activities from time to time. Prohibited uses will be communicated via City bookings, lease and licence agreements, or otherwise communicated where prohibited activities may be temporary.

Managing impacts on adjoining land uses

Uses and activities permitted at the General Crown Reserves must consider the needs of and impacts on residents, workers and adjoining land uses in terms of accessibility, noise, lighting, traffic and parking.

Scale and intensity of use

The scale and intensity of development and activities on Crown and community land is to be generally compatible with the scale and anticipated use of the park, reserve and associated facility.

In particular, the scale and intensity of use will be consistent with the carrying capacity of the land, and any master plan or development consent relating to the land.

High Intensity use

This PoM specifically authorises activities at the General Crown Reserves which may attract high numbers of people including one-off community events and performances.

Applications for permissible activities will be assessed on a case-by-case basis by Outdoor Venue Management.

The scale and intensity of such activities will be managed by the City of Sydney's booking process and associated conditions of use.

Informal use

The intensity of use for informal recreational activities across the General Crown Reserves and settings (such as playgrounds, fitness stations and park seating) will be determined by the community use of the site but will be managed to avoid undue impacts on park fabric and environment.

Commercial uses

Commercial operations for cafes, markets and kiosks that support and encourage community use of the open space, and/or address a community need are to be assessed based on the proposed scale and intensity of use and are authorised subject to compatibility with the objectives identified within this PoM.

Funding

Funding is integral to implementing the management targets identified with this PoM and is defined under two categories:

- Capital works involving the construction and development of new facilities and structures
- Maintenance and management of the reserves.

The implementation of this PoM is achieved through its linkage with Council's management plan, operational budget, and capital works program.

Council currently funds management and maintenance costs through its annual budget allocation and uses capital funds and 7.11 contributions for capital and nonrecurrent works.

Funding arrangements for the reserves need to address recurrent costs of management and maintenance, together with capital costs for new facilities or upgrading works. Funding for construction of new facilities is generally through the annual budgeting process, but special projects may be partly funded through NSW

Government grant allocations, which may involve matching funding from Council.

Sources of funding include but are not limited to:

- 7.11 contributions – utilised for new landscaping and/or facilities complementary to the core management objectives.
- Partnerships – there is an opportunity to develop further partnerships with residents and interested people in relation to park improvements and ongoing management, such as bush regeneration.
- Park revenue – income from the parks is generated by lease and licence fees, and from applicants for approved functions and events.
- Grants – several state and federal government grants are available to assist with capital works in the parks.

What are leases and licences

Leases and licences formalise the use of Crown and community land by groups such as sporting clubs, community groups and schools, or by commercial organisations and individuals providing facilities or services for public use. The occupation of Crown and community land not only applies to the surface of the land but also includes the airspace above and subsurface below.

A lease is normally issued where exclusive control of all or part of an area by a user is proposed. Licences allow multiple and non-exclusive use of an area. A licence may be required where intermittent or short-term use or control of all or part of the park, or associated facilities are proposed. Several licences for different users can apply to the same area at the same time, provided there is no conflict of interest.

The City of Sydney's ability to lease or licence Crown reserves managed as community land such as General Crown Reserves is authorised by section 3.22 of the CLM Act, which requires the preparation of a community land PoM, adopted by Council, to authorise an occupancy or use agreement.

Authorisation of leases and licences

Tenure may be granted for exclusive and non-exclusive uses to any organisation for any compatible purpose, as determined by Council, on such terms as Council may provide.

Under section 46 of the LG Act, a lease or licence may only be granted for a maximum term of 21 years, including options. A lease or licence for a term exceeding 5 years may be granted only by tender unless it is granted to a non-profit organisation. All leases and licences must be publicly notified for a minimum period of 28 days.

To ensure that usage or occupation of the reserve is appropriate for the lease or licence, a council Crown land manager must always consider:

- Compatibility with the Crown reserve purpose, and core objectives for the category of the land
- Compatibility with the applicable land zoning
- Environmental and social impacts of the activities to be permitted by the lease or licence
- Appropriate term (period of occupation) of the lease or licence
- Capability of the Crown reserve to support the proposed lease or licence
- Current and future use of the land
- If the issue of the lease, licence or other estate will materially harm the use of the land for any of the purposes for which it was dedicated or reserved.

In addition to the conditions provided within the authorisations, the granting of a lease, licence, short-term use or other estate must also:

- Have no negative impact on historical heritage sites or significant fabric
- Not alienate the park or reserve unreasonably
- Be ecologically sustainable
- Have a component of community benefit
- Demonstrate a clear nexus between the activity and the park or reserve

- Not result in overuse of the area or conflict with community use of the area
- Ensure traffic, parking and essential or required vehicular access implications are considered
- Be in accordance with all Council policies and procedures governing the use of open space.

A use agreement (lease, licence, short-term use or other estate) on Crown land may impact Native Title rights and interests. A use agreement issued on Crown land must be issued in accordance with future act provisions of the Native Title Act 1993, and in accordance with Part 8 of the CLM Act unless Native Title is extinguished. For Crown land, which is not excluded land, this will require written advice from Council's Native Title Manager that it complies with any applicable provisions of the Native Title legislation.

Where the land is subject to a claim under the Aboriginal Land Rights Act 1983 the issue of any lease, licence or other estate will not prevent the land from being transferred in the event the claim is granted.

Express authorisation of Leases, Licences, Short-term Uses and Other Estates under this Plan of Management

Sections 10-11 detail the specific authorisations and purposes for which tenure may be granted in accordance with the community land categories for the General Crown Reserves.

The purposes for which tenure may be granted are consistent with existing uses and will enable the social, intellectual, spiritual and physical enrichment of residents, workers, and visitors to the City of Sydney area.

The following outlines general authorisations applicable under this PoM and an indication of the criteria in which specific activities are to be assessed by the City of Sydney.

Access

Access for building-related activities including for construction or maintenance purposes

Access across community land shall be authorised under this PoM provided that (but not limited to):

- The access is of a temporary nature
- In circumstances where proposed works require access and it is associated with an adjoining property, proponents must clearly demonstrate that there are no alternative means of access available to avoid access through community land to undertake the required development works
- A performance bond as prescribed in Council's Schedule of Fees and Charges in respect of potential damage to City assets is lodged with the City of Sydney
- All necessary approvals have been obtained
- The City of Sydney is in receipt of proof of suitable insurances including public liability insurance.

Temporary structures

Land use planning controls

Under the LEP, the temporary use of community land may be deemed as exempt development if the proposed activity can be authorised under the LG Act and is no more than 52 days in any 12-month period ("**the prescribed period**").

Temporary structures for building-related activities including for construction or maintenance purposes

The City of Sydney may authorise a short-term licence for the placement of temporary building-related structures provided that (but not limited to):

- The use of community land is within the prescribed period
- In circumstances where the proposed works are associated with an adjoining property, proponents must clearly demonstrate that there are no alternative means of placement available to avoid use of community land to

undertake the required development or maintenance works including satisfying any safety requirements under the Work, Health and Safety Act 2011

- Building-related structures comply with the City of Sydney's technical requirements
- A performance bond as prescribed in Council's Schedule of Fees and Charges in respect of potential damage to City assets is lodged with the City of Sydney
- All necessary approvals have been obtained
- The City of Sydney is in receipt of proof of suitable insurances including public liability insurance.

Proponents can refer to the following City of Sydney documents as a technical guide for temporary structures until such time as they are revised and adopted:

- Guidelines for Hoardings and Scaffolding 2017
- Draft Code of Practice for Hoisting and Construction Activities in Public Places.

If the City of Sydney is unable to approve short-term licence for these activities, applicants should consider an application under the provisions of the Access to Neighbouring Lands Act 2000.

Temporary structures related to events

The use of community land for the placement of temporary event structures shall be authorised under this PoM provided (but not limited to):

- The use of community land is within the prescribed period
- The event structures comply with City of Sydney's technical requirements, and where required, the relevant standards identified within the State Environmental Planning Policy (Exempt and Complying Development Codes) 2008
- A performance bond as prescribed in Council's Schedule of Fees and Charges in respect of potential damage to City assets is lodged with the City of Sydney
- All necessary approvals have been obtained
- The City of Sydney is in receipt of proof of suitable insurances including public liability insurance.

Bookings and events

Temporary events

Temporary events and activities are to be assessed and approved in accordance with the City of Sydney's temporary event approvals process and in line with existing applicable guidelines, policies and legislative requirements, both locally and at a State Government level.

The following criteria is not an exhaustive list but provides guidance on how temporary events and activities are assessed:

- Location including permissible use and compatibility with the relevant land
- Scale and intensity
- Duration and date sensitivity
- Proposed operational times
- Required infrastructure and proposed production design
- Access and logistics requirements
- Environmental impacts
- Proposed signage and/or advertising
- Addressing safety and security requirements.

Venues for hire

The City of Sydney offers a diverse range of indoor and outdoor venues for hire on a short-term or hourly basis that service the community enabling cultural, recreational and social outcomes.

Applications to use venues for hire are to be assessed and approved in accordance with City of Sydney's venue for hire approval process and in line with existing applicable guidelines, policies and legislative requirements.

All applicable fees are outlined in Council's adopted schedule of fees and charges.

Banner Hire

The City of Sydney banner network is used to promote events and activities which are of public interest. Banner campaigns are subject to approval and must comply with the City's Banner Terms and Conditions. All applicable fees are outlined in Council's adopted schedule of fees and charges.

Personal trainers

The City of Sydney encourages all members of its community to use parks and open space responsibly in meeting their health, well-being and fitness needs.

The City of Sydney chooses not to charge for the use of its parks and open spaces for outdoor fitness training as it does not wish to create a barrier to participating in physical exercise.

Personal fitness trainers including commercial, not-for-profit and community groups, wishing to train outdoors in Council's local government area are expected to comply with the Outdoor Fitness Training Voluntary Code of Conduct and its criteria for use.

Fitness training groups and activities that are exempt from this Code are:

- Walking groups
- Activities of schools under the supervision or a teacher
- Hirers that have a current booking with the City to use a sports field, oval or court and comply with the City's Terms and Conditions of Use.

creation of an easement. In all cases, the applicant is to be responsible for all costs incurred by City of Sydney in the creation of the easement.

Subject to the provisions of Section 47F of the LG Act, an estate in respect of this land category is expressly authorised by this PoM for the purpose of a "public road" where the provision of that road is consistent with the core objectives stated herein and where the road is necessary for the enjoyment of that land.

Other Estates

Easements across Crown and community land for the purpose of public utilities, providing pipes, conduits or other connections under the surface of the ground, for the connection of premises adjoining the community land to a facility on the community land shall be authorised by this Plan of Management, and shall be subject to the following criteria:

- There is no feasible alternative to connecting to a facility on the community land
- There is no significant impact on the Crown reserve
- Where the proposal involves the creation of an easement and/or a restriction on the future development potential of the property, compensation is assessed.

In instances where there is an encroachment (existing or proposed) upon public land by a permanent structure, and the structure does not significantly interfere with the functioning of the reserve, the City of Sydney may consider the

9. Management targets and strategies

The table below outlines the management targets or desired outcomes for the General Crown Reserves, including the means and strategies for their realisation, and means of assessment and review by the City of Sydney.

Ref	Values / Roles	Management Target	Means (strategies for implementation)	Performance Measures
1.0 IDENTITY CHARACTER AND EXPERIENCING THE PLACE				
1.1	A meaning of the place that resonates with Country	<ul style="list-style-type: none"> To implement a meaning and description that reflects connection to place 	Work with the community to establish a meaning and description that captures the place's connection to Country	Consultation completed Adopted meaning and description
1.2	Places which signpost and celebrate local, natural and cultural history	<ul style="list-style-type: none"> To contribute to the spaces identity and character 	Investigate the inclusion of informative and interpretive elements that reflect the spaces historical identity and natural character	Increased visibility of park identity
1.3	Places with a strong character and identity	<ul style="list-style-type: none"> To conserve the strong, physical, cultural and social identities of the parks 	Management has regard for the complex and diverse influences on park character and identity and seeks to conserve and enhance	Targeted user surveys
1.4	Valued greenspaces	<ul style="list-style-type: none"> To maintain and enhance the green character of the parks 	Maintain the green qualities of each park	Increased use of parks measured by surveys and observation
2.0 ACCESS, CONNECTIONS AND ACCESSIBILITY				
2.1	Well-connected spaces to adjoining neighbourhoods and to district and regional users	<ul style="list-style-type: none"> To provide functional, inviting, accessible and safe routes to the park from adjoining areas 	Review, monitor and work towards improving local access routes for workplace precincts and adjoining residential areas	Targeted user surveys
2.2	Wayfinding that seamlessly aids access and use	<ul style="list-style-type: none"> To provide effective wayfinding and signage for park users and cyclists 	Maintain and upgrade wayfinding and signage in accordance with asset management plan Where required, implement new wayfinding and signage	Increased local use of park, measured by observation Routine surveys, audits and inspections
2.3	Places that are clear, easy and safe to move around	<ul style="list-style-type: none"> To provide functional, attractive and compliant internal circulation routes and path networks 	Maintain and upgrade paths and pavements in accordance with park service levels Where required, implement new pathways to create greater connectivity in park	Path and pavements managed in accordance with Australian Standards Routine surveys, audits and inspections
2.4	An appropriately lit environment	<ul style="list-style-type: none"> To provide adequate lighting to support desired night access, recreational and leisurely use of open space 	Maintain and renew lighting in accordance with asset management plan Monitor to identify lighting issues and address as require	Lighting maintained in accordance with Australian Standards Routine surveys, audits and inspections

General Crown Reserve Draft Plan of Management

Ref	Values / Roles	Management Target	Means (strategies for implementation)	Performance Measures
2.5	Places that are not compromised by parking and vehicle access	<ul style="list-style-type: none"> To provide a balanced approach to parking To provide and manage functional maintenance and emergency access mitigating adverse impacts on park and uses Prevent unauthorised vehicle access 	<p>Manage existing off-street parking to ensure efficiency and equity</p> <p>Ensure that the use of vehicles, when permitted in parks are regulated and do not affect the normal functioning of these spaces for community use</p> <p>Ongoing surveillance and enforcement of open space areas</p> <p>Incorporate educational activities into ongoing management</p>	<p>Reduced pedestrian, cyclist and vehicle conflicts</p> <p>Improved public safety</p> <p>Management measures carried out</p>

3.0 COMMUNITY USE AND ACTIVATION

3.1	Places of respite for users and adjacent residents	<ul style="list-style-type: none"> To ensure that the park provides a range of flexible and informal use spaces that are attractive and comfortable to be in 	Ensure that park planning, and management maintains and enhances flexible informal use of spaces for broad community benefit	Increased local use of park measured by survey and observation
3.2	Amenities that enable community interaction	<ul style="list-style-type: none"> To provide social opportunities for the community 	Investigate opportunities to activate the park spaces (e.g. café at Green Park)	Increased local use of parks measured by and observation
3.3	Spaces and facilities that support youth use of the parks	<ul style="list-style-type: none"> To sustainably respond to youth needs for gathering and activity spaces 	Manage spaces and facilities to support youth gathering and activity	Increased youth participation measured by observation
3.4	Places for dog walking and exercise	<ul style="list-style-type: none"> To provide for effective dog exercise in accordance with Companion Animals Act 	Manage off leash dog access to spaces as defined by City's Companion Animals Policy Monitor to identify management issues and address as required	Dog access maintained Reports of conflicts between dogs and other park users
3.5	Places that recognise and celebrate First Nations living culture	<ul style="list-style-type: none"> To celebrate First Nations heritage and living culture 	For the pursuit of 'practising living culture', work with the First Nations community to understand the processes and procedures required to enhance access to spaces and facilities	Review existing policies and procedures
3.6	Places for events	<ul style="list-style-type: none"> To sustainably encourage temporary event use that contributes to local activation and cultural and community outcomes 	<p>To facilitate temporary event use that is appropriate to scale of spaces and in consideration of other park uses</p> <p>Develop guidelines for event use of parks defining:</p> <ul style="list-style-type: none"> Usable area and capacity Other specific event management and approval requirements 	<p>Increased use of park for events appropriate to scale and intensity</p> <p>Developed guidelines</p> <p>Ongoing review and compliance</p>
3.7	Places that provide access to community venues	<ul style="list-style-type: none"> To activate the role of community venues 	Maintain and enhance the role of community venues	Venue bookings

General Crown Reserve Draft Plan of Management

Ref	Values / Roles	Management Target	Means (strategies for implementation)	Performance Measures
3.8	Places that are open and usable by all members of community	<ul style="list-style-type: none"> That the parks are managed as part of a coordinated compassionate approach across the city to assisting homeless persons 	Ongoing management of people sleeping rough in the park needs to be in accordance with the City of Sydney's policy on homelessness in public spaces, which 'recognises the right of everyone in the community to use public spaces' (Homelessness Action Plan 2019) and aims to ensure that public space can be accessed and enjoyed by everyone, including people who are homeless	Maintain records of public comments in relation to people sleeping rough. Regularly review of register to guide future directions
3.9	A safe place to visit day and night	<ul style="list-style-type: none"> To ensure the park and park facilities provide a safe place to visit and pass through, appropriate to intended (and varied) usage times of facilities and access routes 	Monitor ongoing safety and access in park and facilities Coordinate with local police to identify and act on safety issues <ul style="list-style-type: none"> Where improvements are proposed, ensure that they are designed and maintained in accordance with Crime Prevention through Environmental Design principles 	Percentage of people who feel safe in these spaces Safe spaces with no reported incidents Sustained relationship with local police
3.10	Places that provide access to public amenities	<ul style="list-style-type: none"> Maintain access and provision of public toilet facilities for all park users 	Monitor to identify management issues for public toilet facilities, address as required Implement new improvements, where required	Maintain records of public comments in relation to public toilet. Regular review of register to guide future directions

4.0 FACILITIES AND BUILT INFRASTRUCTURE

Park elements

4.1	Park elements that support park use and create an attractive character	<ul style="list-style-type: none"> To support recreational and leisure use of open space while avoiding proliferation of elements 	Maintain and renew park furniture and other park elements in accordance with asset management plan Monitor the appropriateness of placement Implement new improvements, where required	Measured against contract KPIs Inspections and audits
-----	--	--	--	--

Play spaces

4.2	Play facilities for the local community	<ul style="list-style-type: none"> To provide play environments that encourage activity and support family use of park 	Maintain and renew play spaces and related landscape settings in accordance with asset management plan Monitor the appropriateness of placement Implement new improvements, where required	Measured against contract KPIs Inspections and audits
-----	---	---	--	--

Underground infrastructure

4.3	Underground infrastructure	<ul style="list-style-type: none"> To ensure services infrastructure requirements are effectively integrated into planning and design 	Liaise and coordinate with services authorities to identify amplification and renewal works that may impact spaces Manage to limit impacts on use and facilitate effective make good / integration	Sustained relationship with authorities
-----	----------------------------	--	---	---

General Crown Reserve Draft Plan of Management

Ref	Values / Roles	Management Target	Means (strategies for implementation)	Performance Measures
5.0 ENVIRONMENT AND SUSTAINABILITY				
Vegetation management and urban ecology				
5.1	Resilient landscaping to future-proof our greenspaces	<ul style="list-style-type: none"> To sustain a green landscape for continued community enjoyment 	Maintain and renew horticulture, grass cover and plantings in accordance with park service levels and City guidelines	Improved grass cover condition Measurement and monitoring of vegetation Compliance with park service levels
5.2	Landscaping and planting that reflects the original natural environment	<ul style="list-style-type: none"> To increase indigenous plantings within the park landscape 	Where appropriate and site conditions allow, investigate the planting of indigenous species	Increased indigenous plantings
5.3	Places of diverse habitats	<ul style="list-style-type: none"> To increase habitat value of natural and built features To protect and improve existing habitat areas 	Investigate the potential to enhance habitat values through areas of built form and natural ground and cliff surfaces Maintain and manage areas of bush restoration in accordance with Bush Restoration Service Levels Monitor sites for species and conservation values	Monitoring of habitat values Compliance with bush restoration service levels
5.4		<ul style="list-style-type: none"> To enhance ecological priorities in open space 	Maintain and enhance urban ecology advisory role for proposed works associated with open space Investigate opportunities to increase community understanding and participation in the preservation of greenspace and the importance of ecological elements	Ongoing internal participation in open space works Increased community participation
5.5	Places that are connected to support biodiversity	<ul style="list-style-type: none"> Increase biodiverse connectivity within the site and surrounds 	Increase habitat value for key sites and species, as identified in the biodiversity corridor Implement in accordance with Landscape Code and Park Service Levels	Monitoring of habitat values
Shade and temperature management				
5.6	Places that are cool, calm and comfortable in summer heat	<ul style="list-style-type: none"> To conserve existing shade tree canopy and to selectively extend to create new shade 	Maintain and manage existing tree canopy for ongoing health Plan for and integrate tree canopy shade in suitable locations across site	Preserved and increased of shade cover Targeted user surveys
5.7	Established plantings which contribute to the park setting and habitat	<ul style="list-style-type: none"> To effectively maintain and manage the existing tree resources at optimum health for their safe and practical lifespans To effectively plan for succession planting 	Implement tree management including pruning and/or removal of trees and replacement planting in accordance with park service levels and City guidelines Plan and implement a succession planting program To parks with mature tree canopy plan and implement a succession planting program in accordance with tree management plan (where required)	Improved health of trees and successful establishment of new trees as measured by arborist's survey Compliance with park service levels and City guidelines Implemented succession planting and tree management plan (where required)

General Crown Reserve Draft Plan of Management

Ref	Values / Roles	Management Target	Means (strategies for implementation)	Performance Measures
Water management				
5.8	Places exhibiting water sensitive urban design	<ul style="list-style-type: none"> To effectively manage water use and runoff 	<p>Where feasible, implement water saving initiatives, alternative water sources and install metering to effectively manage water use</p> <p>Implement water-sensitive urban design to minimise environmental degradation and improve waterway quality</p>	<p>Increased savings in water consumption</p> <p>Reduced potable water demand for park</p> <p>Improved water quality</p>
Energy management				
5.9	Places exhibiting sustainable energy management	<ul style="list-style-type: none"> To effectively manage energy use 	<p>Where feasible, implement energy management initiatives, renewable energy, investigate alternatives to temporary generators and install metering as appropriate to effectively manage energy</p>	<p>Sustainable initiatives implemented</p> <p>Increased savings in energy consumption</p> <p>Reduction in open space maintenance post event activities</p>
Waste management				
5.10	Places exhibiting sustainable waste management practices	<ul style="list-style-type: none"> A place that maximises the diversion of waste away from landfill 	<p>Ongoing implementation and support of best practice waste management activities</p>	<p>Minimised waste measured against contract KPI's and audits</p>
6.0 CULTURE AND HERITAGE				
6.1	Places that represent Aboriginal people and their living culture	<ul style="list-style-type: none"> To identify and interpret Aboriginal cultural heritage values of the local area 	<p>Consult with Aboriginal people on how to interpret and integrate cultural heritage values in ongoing planning of improvements</p>	<p>Consultation completed</p> <p>Implementation of processes</p>
6.2	Places which are a conservatory of natural and cultural heritage	<ul style="list-style-type: none"> To appropriately manage and conserve elements of heritage significance To guide management and design decision making to achieve optimum heritage management outcomes 	<p>Preparation and ongoing implementation of supporting documentation to guide the maintenance of sensitive and significant heritage assets or fabric</p>	<p>Completed supporting documentation</p>
6.3	Places that provide the community access to cultural expression and awareness through arts and culture	<ul style="list-style-type: none"> To provide a canvas for public art and artistic and creative expression that is sustainable in the context of existing character and use 	<p>Monitor existing art pieces for their ongoing role and fit within the park.</p> <p>Conserve and manage in accordance with asset management plan</p>	<p>Maintain records of public comments in relation to appropriateness of public art. Regular review of register to guide future directions</p> <p>Measured against contract KPIs</p> <p>Inspections and audits</p>
6.4	Places that provide a canvas for arts and culture	<ul style="list-style-type: none"> To facilitate public art in temporary and permanent forms that complements the space setting and adds to the range of experiences provided 	<p>Consider opportunities to implement temporary and permanent art installations, where appropriate</p>	<p>Increased representation of public art in parks</p>
7.0 MANAGEMENT AND MAINTENANCE				
7.1	Places which are clean, well-maintained and carefully managed	<ul style="list-style-type: none"> To provide well-maintained parks 	<p>Maintenance programs carried out in accordance with City of Sydney Parks Maintenance Technical Specifications</p>	<p>Regular visitation and condition assessments</p> <p>Measured against contract KPI's and audits</p>

General Crown Reserve Draft Plan of Management

Ref	Values / Roles	Management Target	Means (strategies for implementation)	Performance Measures
7.2	Facilities that continue to service and meet the community's needs	<ul style="list-style-type: none"> To provide well-maintained facilities 	Maintain and renew facilities in accordance with asset management plans	Regular visitation and condition assessments Measured against contract KPI's and audits
7.3	Appropriate leases and licences	<ul style="list-style-type: none"> To ensure that tenure and permitted use arrangements allow the widest possible community access to open space and are orientated to mutually compatible recreational, sporting, community, educational, cultural and social activities 	All future leases and licences to meet the requirements of the Local Government Act 1993, Crown Land Management Act 2016 and Native Title Act 1993	Ongoing review and compliance of leases and licences

10. Park category - authorisations

Table 4. Permissible uses and development activities – Park Category

Table 4 outlines the permitted uses and development activities of the areas of the General Crown Reserves categorised as Park subject to City of Sydney assessment, approvals and booking/hire systems.

This is not an exhaustive list and other non-listed uses and development activities may still be permitted subject to merit and compatibility with the Crown reserve purpose, core objectives and aims of this Plan of Management.

Uses	Development Activities
<ul style="list-style-type: none"> – Access through a Crown reserve (e.g. to undertake building activities associated with adjoining property) – Advertising consistent with Crown reserve purpose (e.g. banners and signage) – Broadcasts associated with any event, concert or public speech – Café/Kiosk, including outdoor seating and tables – Casual and informal recreation – Catering and coffee carts – Community, cultural, educational and social uses – Community gardening – Concerts and other performances, including both live performances and film (cinema and TV) – Conducting a commercial photography session or filming (as defined in the Local Government Act 1993) – Decorations, displays, exhibitions, fairs, fashion parades, festivals and shows – Emergency occupation for prevention, preparedness, response and recovery 	<ul style="list-style-type: none"> – Advertising structures and signage (e.g. banners and signage) that: <ul style="list-style-type: none"> ○ relate to approved uses/activities ○ are discrete and temporary ○ complies with Planning requirements ○ are approved by the City of Sydney – Café/Kiosk, including outdoor seating and tables – Community gardening – Development that facilitates community, cultural, educational, recreational and social activities, including but not limited to: <ul style="list-style-type: none"> ○ Adaptive reuse of existing building/structures for a use compatible with the park ○ Amenities to facilitate the safety, use and enjoyment of the park (e.g. seating, shade structures, BBQ, picnic tables, toilets, bike rings) ○ Ancillary areas to facilitate use and enjoyment by the community (e.g. storage and change rooms, car parks) ○ Buildings and structures that facilitate the permissible uses and activities (e.g. grandstands, pavilions, fitness equipment, playgrounds, outdoor courts) ○ Improving access including active transport, disability access to facilities, amenity and the visual character of the general community area

General Crown Reserve
Draft Plan of Management

Uses	Development Activities
<ul style="list-style-type: none"> – Engaging in an appropriate trade or business (e.g. community auctions and similar activities) – Functions (e.g. commemorative services, book launches, film releases, balls, and similar activities) – Markets – Outreach services – Passive and active recreational activities – Playgroups – Playing a musical instrument, or singing for fee or reward – Public art or other cultural installations – Public speeches, meetings, workshops, seminars and presentations, including educational programs – Publicly accessible ancillary areas (e.g. toilets) – Signage (cultural, educational, regulatory and wayfinding) – Social events (e.g. weddings, picnics and community gatherings) – Sports, fitness and leisure training or classes – Storage (e.g. ancillary to use of park) – Temporary structures (e.g. building/construction or events related) – Venue hire 	<ul style="list-style-type: none"> (e.g. fountains, pathways, lighting, paved areas, hard and soft landscaped areas) – Development that facilitates energy and water efficiencies (e.g. solar lighting and photovoltaic panels, stormwater harvesting and storage, swales, rain gardens, irrigation and reticulation systems) – Environmental management (e.g. remediation and flood mitigation work) – Heritage and cultural interpretation (e.g. memorials and public art) – Markets – Signage (cultural, educational, regulatory and wayfinding) – Temporary structures (e.g. building/construction or events related)

Table 5. Express authorisation of leases, licences, short-term uses and other estates – Park Category

The Local Government Act 1993 requires that any lease, licence, short-term use or other estate over community land must be expressly authorised by a Plan of Management. **Table 5** outlines purposes for which tenure may be granted on community land categorised as Park. Licences and approvals for short-term casual use or occupation for a range of uses may also be granted for the General Crown Reserves in accordance with Clause 116 of the Local Government (General) Regulation 2005.

Any lease, licence or short-term proposal will be individually assessed and considered, including the community benefit, compatibility with this Plan of Management and the capacity of the area to support the activity. The below is not an exhaustive list and other non-listed purposes may still be permitted subject to merit.

General Crown Reserve
Draft Plan of Management

Type of tenure arrangement	Purpose for which tenure may be granted
Lease (up to 21 years)	<p>Sympathetic, compatible uses may include:</p> <ul style="list-style-type: none"> – Café/kiosk areas, including seating and tables – Community, cultural, educational and social uses
Licence (up to 21 years)	<ul style="list-style-type: none"> – Access through a Crown reserve (e.g. to undertake building activities associated with adjoining property) – Café/Kiosk, including outdoor seating and tables – Coffee carts – Community, cultural, educational and social uses – Emergency occupation for prevention, preparedness, response and recovery – Management and operation of community garden – Markets – Outreach services – Storage hire (e.g. ancillary to use of park)
Short-term uses (12 months or less)	<ul style="list-style-type: none"> – Access through a Crown reserve (e.g. to undertake building activities associated with adjoining property) – Advertising consistent with Crown reserve purpose (e.g. banners and signage) – Broadcasts associated with any event, concert or public speech – Casual and informal recreation – Catering and coffee carts – Community, cultural, educational and social uses – Community gardening – Concerts and other performances, including both live performances and film (cinema and TV) – Conducting a commercial photography session or filming (as defined in the Local Government Act 1993) – Decorations, displays, exhibitions, fairs, fashion parades, festivals and shows – Emergency occupation for prevention, preparedness, response and recovery – Engaging in an appropriate trade or business (e.g. community auctions and similar activities) – Functions (e.g. commemorative services, book launches, film releases, balls, and similar activities) – Kiosks – Markets – Outreach services – Playgroups – Playing a musical instrument, or singing for fee or reward

General Crown Reserve
Draft Plan of Management

Type of tenure arrangement	Purpose for which tenure may be granted
	<ul style="list-style-type: none"> – Public art installations – Public speeches, meetings, workshops, seminars and presentations, including educational programs – Signage – Social events (e.g. weddings, picnics and community gatherings) – Sports, fitness and leisure training or classes – Storage hire (e.g. ancillary to use of park) – Temporary structures (e.g. building/construction or events related) – Venue hire
Other estates	<p>This Plan of Management allows the City of Sydney to grant ‘an estate’ over community land for the provision of public utilities and works associated with or ancillary to public utilities in accordance with the Local Government Act 1993.</p> <p>Estates may also be granted across community land for the provision of pipes, conduits, or other connections under the surface of the ground for the connection of premises adjoining the community land to a facility of the council or other public utility provider that is situated on community land.</p> <p>Note: refer Section 8 for Express authorisation of leases, licences, short-term uses and other estates under this Plan of Management.</p>

11. General Community Use category - authorisations

Table 6. Permissible uses and development activities – General Community Use Category

Table 6 outlines the permitted uses and development activities of the areas of the General Crown Reserves categorised as General Community Use subject to City of Sydney assessment, approvals and booking/hire systems.

This is not an exhaustive list and other non-listed uses and development activities may still be permitted subject to merit and compatibility with the Crown reserve purpose, core objectives and aims of this Plan of Management.

Uses	Development Activities
<ul style="list-style-type: none">– Access through a Crown reserve (e.g. to undertake building activities associated with adjoining property)– Advertising consistent with Crown reserve purpose (e.g. banners and signage)– Broadcasts associated with any event, concert, or public speech– Café/Kiosk, including outdoor seating and tables– Catering and coffee carts– Centre-based education and care (e.g. long day care, pre-school, occasional care and outside school hours care)– Community, cultural, educational and social uses– Concerts and other performances, including both live performances and film (cinema and TV)– Conducting a commercial photography session and filming (as defined in the Local Government Act 1993)– Decorations, displays, exhibitions, fairs, fashion parades, festivals and shows	<ul style="list-style-type: none">– Advertising structures and signage (e.g. banners and signage) that:<ul style="list-style-type: none">○ relate to approved uses/activities○ are discrete and temporary○ complies with Planning requirements○ are approved by the City of Sydney– Café/Kiosk, including outdoor seating and tables– Development that facilitates community, cultural, educational, recreational and social activities, including but not limited to:<ul style="list-style-type: none">○ Amenities that facilitate the safety, use and enjoyment of the facility (e.g. kitchens and toilets)○ Buildings and structures that facilitate the permissible uses and activities○ Improving access including disability access to facilities, amenity and the visual character of the general community area (e.g. fountains, pathways, lighting, paved areas, hard and soft landscaped areas)○ Provision of ancillary areas to facilitate use and enjoyment by the community (e.g. storage, waste rooms and change rooms/showers)

General Crown Reserve
Draft Plan of Management

Uses	Development Activities
<ul style="list-style-type: none"> – Emergency occupation for prevention, preparedness, response and recovery – Engaging in an appropriate trade or business (e.g. community auctions and similar activities) – Functions (e.g. commemorative services, book launches, film releases, balls, and similar activities) – Information and education facilities (e.g. libraries) – Management and operation of community facility – Markets – Outreach services – Playgroups – Playing a musical instrument, or singing for fee or reward – Public art or other cultural installations – Public speeches, meetings, workshops, seminars and presentations, including educational programs – Signage (cultural, educational, regulatory and wayfinding) – Social events (e.g. weddings and community gatherings) – Storage hire (e.g. ancillary to use of community or recreational facility) – Temporary structures (e.g. building/construction or events related) – Venue for hire 	<ul style="list-style-type: none"> – Development that facilitates energy and water efficiencies (e.g. solar lighting and photovoltaic panels, stormwater harvesting and storage, irrigation and reticulation systems) – Environmental management (e.g. remediation and flood mitigation work) – Heritage and cultural interpretation (e.g. memorials and public art) – Markets – Signage (cultural, educational, regulatory and wayfinding) – Temporary structures (e.g. building/construction or events related)

Table 7. Express authorisation of leases, licences, short-term uses and other estates – General Community Use Category

The Local Government Act 1993 requires that any lease, licence, short-term use or other estate over community land must be expressly authorised by a Plan of Management. **Table 7** outlines purposes for which tenure may be granted on community land categorised as General Community Use. Licences and approvals for short-term casual use or occupation for a range of uses may also be granted for the City of Sydney General Crown Reserves in accordance with Clause 116 of the Local Government (General) Regulation 2005.

Any lease, licence or short-term proposal will be individually assessed and considered, including the community benefit, compatibility with this Plan of Management and the capacity of the area to support the activity. The below is not an exhaustive list and other non-listed purposes may still be permitted subject to merit.

General Crown Reserve
Draft Plan of Management

Type of tenure arrangement	Purpose for which tenure may be granted
Lease (up to 21 years)	<p>Sympathetic, compatible uses may include but are not limited to:</p> <ul style="list-style-type: none"> – Café/Kiosk, including outdoor seating and tables – Centre-based education and care – Community purposes (e.g. community meetings) – Cultural purposes (e.g. dramatic productions and galleries) – Educational purposes (e.g. libraries, information centre) – Health or Social Support services (e.g. medical practitioner) – Recreational purposes (e.g. fitness and dance classes) – Management and operation of community facility
Licence (up to 21 years)	<ul style="list-style-type: none"> – Access through a Crown reserve (e.g. to undertake building activities associated with adjoining property) – Café/Kiosk, including outdoor seating and tables – Centre-based education and care – Community purposes (e.g. community meetings) – Cultural purposes (e.g. concerts, dramatic productions and galleries) – Educational purposes (e.g. libraries, education classes, workshops) – Emergency occupation for prevention, preparedness, response and recovery – Health or Social Support services (e.g. medical practitioner) – Management and operation of community facility – Markets – Outreach services – Recreational purposes (e.g. fitness and dance classes, games) – Storage hire (e.g. ancillary to community use)
Short-term uses (12 months or less)	<ul style="list-style-type: none"> – Access through a Crown reserve (e.g. to undertake building activities associated with adjoining property) – Active and passive recreational activities – Advertising consistent with Crown reserve purpose (e.g. banners and signage) – Broadcasts associated with any event, concert, or public speech – Catering and coffee carts – Community, cultural, educational and social uses – Concerts and other performances, including both live performances and film (cinema and TV) – Conducting a commercial photography session and filming (as defined in the Local Government Act 1993) – Decorations, displays, exhibitions, fairs, fashion parades, festivals and shows – Emergency occupation for prevention, preparedness, response and recovery

General Crown Reserve
Draft Plan of Management

Type of tenure arrangement	Purpose for which tenure may be granted
	<ul style="list-style-type: none"> – Engaging in an appropriate trade or business (e.g. community auctions and similar activities) – Functions (e.g. commemorative services, book launches, film releases, balls, and similar activities) – Kiosks – Markets – Organised and unstructured sporting activities (including fixtures and events) – Other community, cultural, educational and social uses and activities – Outreach services – Playgroups – Playing a musical instrument, or singing for fee or reward – Public art or other cultural installations – Public speeches, meetings, workshops, seminars and presentations, including educational programs – Signage – Social events (e.g. weddings and community gatherings) – Sports, fitness and leisure training or classes – Storage hire (e.g. ancillary to use of community or recreational facility) – Temporary structures (e.g. building/construction or events related) – Venue hire
Other estates	<p>This Plan of Management allows the City of Sydney to grant ‘an estate’ over community land for the provision of public utilities and works associated with or ancillary to public utilities in accordance with the Local Government Act 1993.</p> <p>Estates may also be granted across community land for the provision of pipes, conduits, or other connections under the surface of the ground for the connection of premises adjoining the community land to a facility of the council or other public utility provider that is situated on community land.</p> <p>Note: refer Section 8 for Express authorisation of leases, licences, short-term uses and other estates under this Plan of Management.</p>

12. Appendices

Glossary of terms

Term	Definition
Categorisation	This informs the category for the specified land under the Local Government Act 1993 Confined to Park and General Community Use
Community Land	Classification of land under the Local Government Act 1993 requiring a Plan of Management
Council Crown Land Manager	City of Sydney's appointed position under the Crown Land Management Act 2016
Crown Land	Land owned by the State of New South Wales
Crown Reserve	Crown land that has been dedicated or reserved in accordance with legislation
Outreach Services	Voluntary and Professional Services - a service, group or program that provides food and material support, social contact, clinical outreach and critical care to people who are homeless as well as other disadvantaged groups Mobile voluntary services are not provided from a building or other fixed place but are provided from vehicles or general 'pop up' infrastructure within an outdoor public space
Temporary Structure	Is not designed, installed or constructed to be permanent; and <ul style="list-style-type: none">• Is erected on public land to facilitate demolition, excavation, construction or maintenance work; and site safety/security fencing, scaffolding, cantilevered work platforms and other constructed-related temporary structures; or• Is erected on public land to facilitate events activities and involves the installation of stages, platforms, tents, marquees, booths and other events-related temporary structures.

References

- Open Space, Sports and Recreation Needs Study 2016
- Beare Park Plan of Management 2006
- Glebe Foreshore Walk East Plan of Management 2006
- Dr HJ Foley Rest Park Plan of Management 2005
- Hollis Park Plan of Management 1990
- Crown Reserves Plan of Management Engagement Report February 2021

Refer also to policies and strategies review in this Appendix.

Reserve Information Sheets

ANDREW (BOY) CHARLTON POOL

Reserve details at a glance

Item	Description
Location	Mrs Macquarie's Road, Sydney
Ownership	Crown (The State of New South Wales)
Crown Reserve No. and purpose	D.500250, Public Recreation 28/10/1955
Zoning	RE1 Public Recreation
Area	206.4m ²
Lot & DP	Lot 31 DP 39586
Community land categorisation	General Community Use
Buildings	n/a
Leases / licences	n/a

Heritage and cultural values

- Associated with Woolloomooloo Bay which was frequented by Aboriginal people to camp, fish, hunt and conduct ceremony up until the 1860
- Andrew (Boy) Charlton Pool - located immediately adjacent to the Governors Domain and Civic Precinct, National Heritage Place

Key Heritage elements:

- Rocky intertidal foreshore below sandstone seawall
- Remnant of pre-colonisation landscape

Environmental and landscape values

- Rocky intertidal foreshore below sandstone seawall
- Mixed foreshore vegetation and weeds
- Partly modified / natural character
- Reserve adjoins the Andrew (Boy) Charlton Pool complex



Reserve development

- The Crown reserve was dedicated for public recreation in 1955

Facilities	Usage	Condition
Steps part of pool access	Council maintenance	Average to Good
Part Old sandstone block seawall	n/a	Average to Good

Reserve usage

- No day to day public foreshore access and use – locked gate at sea wall

BEARE PARK

Park details at a glance

Item	Description
Location	Esplanade Road, Elizabeth Bay
Ownership	Crown (The State of New South Wales), City-owned
Crown Reserve No. and purpose	D.500161, Public Recreation, 25/8/1909
Zoning	RE1 Public Recreation
Area	2,321.35m ²
Lot & DP	
Crown Reserve:	Lot 1 DP 136079
City-owned community land:	Kings Cross Rotary Park - Lots 3 & 4 DP 68974, Lot 1 DP 79117 Beare Park - Lots A & B 88740
Community land categorisation	Park
Buildings	Gardeners Shed/ Toilets
Leases / licences	Lease - Sydney Water Corporation 21 years expiry 31/05/19 (holdover)

Heritage and cultural values

- Place of an aboriginal Settlement, Elizabeth Town / "Garrajin" from 1820-1824
- SLEP Elizabeth and Rushcutters Bays Conservation Area C20

Key Heritage elements:

- Canopy fountain, Spray fountain, Brick paving and Lion's head drinking fountain, Seawall, Partially fenced children's playground, Significant trees

Interpretive opportunities:

- Dual Names - Elizabeth Bay and Elizabeth Point have both been officially dual named:
Elizabeth Bay / Gurrain
Elizabeth Point / Jerrowan

Environmental and landscape values

- Heritage foreshore setting.
- Typical Sydney foreshore park situated on reclaimed land with sandstone seawall
- Carparking and marina punctuate the overall open space
- Integrated with Community land to form larger open space



Reserve development

- The Crown reserve was dedicated for public recreation in 1909
- Park refurbishment upgrades 2006

Facilities	Use	Condition
Public Toilets	General Public	Good (2)
Play equipment	General Public	Good (2)
Public Art	Partially interactive to general public	Good (2)
- Canopy Fountain		Good (2)
Specimen Jar		Good (2)
Bear Park Fountain		Good (2)
Gardener's Shed (Rotary Park)	Substation	Average (3)
Seawall	n/a	Average to Good
Park Furniture	General Public	Average to Good
Footpaths	General Public	Average to Good

Reserve usage

- Place to sit, relax, off-leash dog walking
- Access to children's playspace and public toilets
- Pedestrian Foreshore /Harbour water Access
- Occasional Events – NYE, picnics

DR H J FOLEY REST PARK

Park details at a glance

Item	Description
Location	Glebe Point Road cnr Bridge Road, Glebe
Ownership	Crown (The State of New South Wales)
Crown Reserve No. and purpose	R.88997, Public Recreation, 31/8/1973 R.1000257, Baby Clinic, 5/4/1946
Zoning	RE1 Public Recreation
Area	5,010.3m ² , 881.14 m ²
Lot & DP	Lot 665 DP 729285 Lot 521 DP 752049
Community land categorisation	Park
Buildings	Wireless radio Shack, Public Toilets
Leases / licences	n/a

Heritage and cultural values

- Dr HJ Foley Rest Park, Glebe: SLEP Foley Park 1725, Glebe War Memorial 1724, Glebe Point Road Conservation Area C29

Key Heritage elements:

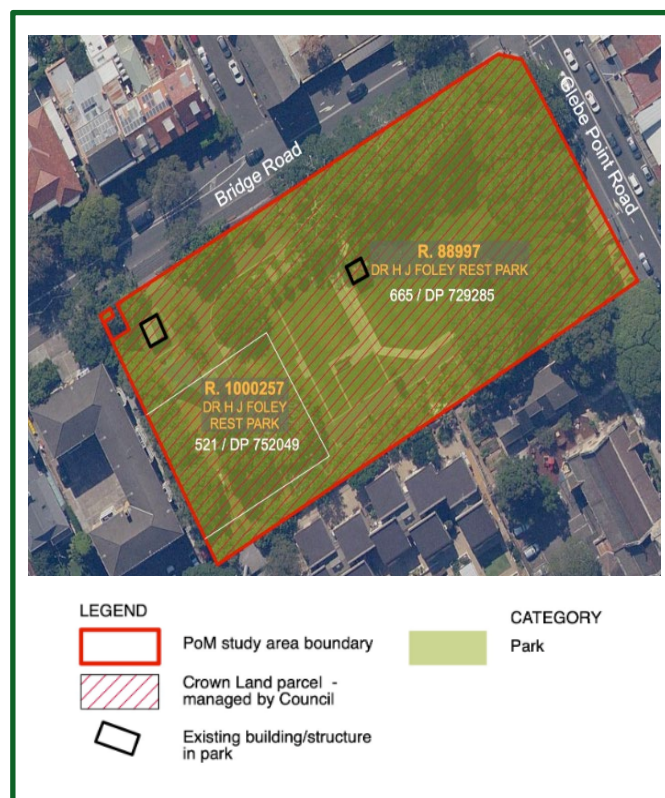
- Wireless radio shack
- Glebe War Memorial
- Significant trees

Environmental and landscape values

- Centre of Glebe Village
- Strong heritage identity
- Mature Fig canopy contributes to park character and shade provision
- Diversity of understorey plantings to park periphery providing a strong green character to park
- Level grassed spaces
- Playspace

Reserve development

- The Crown reserves were dedicated for baby clinic in 1946 and public recreation in 1973
- Major park refurbishment works completed in 2008/2009



Facilities	Usage	Condition
Small Store & Wireless Radio Shack	n/a	Good (2)
Public Toilets	General Public	Good (2)
Glebe War Memorial	Veterans Groups	Good (2)
Playground	General Public	Good (2)
Park Furniture	General Public	Average to Good
Pergola Structures	General Public	
Footpaths	General Public	Average to Good

Reserve usage

- Seating, walk through, dog walking, picnics
- Access to children's play space and equipment
- Access to public toilet facilities
- War memorial commemoration events

FRANKLYN PARK COMMUNITY SPACE

Reserve details at a glance

Item	Description
Location	Franklyn Street, Glebe
Ownership	Crown (The State of New South Wales)
Crown Reserve No. and purpose	R.1011329, Community Purposes; Public Recreation, 17/2/2006
Zoning	R1 Public Recreation
Area	247.2m ²
Lot & DP	Lot 101 DP 1086782
Community land categorisation	General Community Use/Park
Buildings	Community Space
Leases / licences	n/a



Heritage and cultural values

Key Heritage elements:

- Repurposed building with frontage onto Robyn Kemmis

Environmental and landscape values

- Repurposed building with frontage onto Robyn Kemmis Reserve and Glebe Street

Reserve development

- The Crown reserve was dedicated in 2006

Facilities	Usage	Condition
Community Space	Community use	Good (2)

Reserve usage

- Hireable space for private and community focused events

GLEBE FORESHORE WALK EAST

Park details at a glance

Item	Description
Location	Forsyth Street, Glebe
Ownership	Crown (The State of New South Wales), City-owned
Crown Reserve No. and purpose	R.100039, Public Recreation, 20/2/1987 D.1000258, Municipal Purposes; Wharfage, 6/1/1933 R.1039572, Community Purposes; Public Recreation, 28/05/2021
Zoning	RE1 Public Recreation R1 General Residential
Area	195.52m ² , 192.51 m ² , 352.6m ²
Lot & DP	Lot 626 DP 752049 Lot 291 DP752049
Untenured Crown land	Lot 591 DP 752049 Lot 2 DP 874134, Lot 106 DP 1076596
City Owned:	
Community land categorisation	Park General Community Use
Buildings	WBG Incinerator
Leases / licences	Short-term licence Indigitek Ltd 6 months, expiry 19/08/20 (holdover)

Heritage and cultural values

- Glebe Foreshore Walk East: SLEP I683 "Former Incinerator and Semi-Circular Stone Shed"

Key Heritage elements:

- Walter Burley Griffin designed Incinerator
- Shed Structures
- Associated with Blackwattle Creek/Swamp

Environmental and landscape values

- Heritage foreshore setting
- Typical Sydney foreshore park situated on reclaimed land with sandstone seawall
- Is Integrated with Community land to form larger open space and connected to foreshore path network
- Part of Small Carpark area is situated within crown reserve
- Plantings of native Australian trees and some mass planting areas of grasses/sedges (Lomandra).



Reserve development

- The larger Crown reserve was dedicated in 1933 and smaller area in 1987

Facilities	Usage	Condition
Part Carpark	General public	Average to Good
WBG Incinerator	Community use	Good (2)
Shed Structures	General public	Good (2)
Strides Yard Winch	n/a	Good (2)
Footpaths	General public	Average to Good
Park Furniture – Lighting	General public	Average to Good
Park Furniture – Seating	General public	Average to Good
Park Furniture – Drinking Fountains	General public	Average to Good

Reserve usage

- Place to sit, relax, walk through, view the harbour
- Access to harbours edge
- Group fitness and exercise

GREEN PARK

Park details at a glance

Item	Description
Location	Victoria Street cnr Burton Sts & Darlinghurst Rd, Darlinghurst
Ownership	Crown (The State of New South Wales)
Crown Reserve No. and purpose	D.500436, Public Recreation, 15/8/1871 D.500439, Public Recreation, 31/8/1875
Zoning	RE1 Public Recreation
Area	1,432.67m ² , 3,877.47m ²
Lot & DP	Lot 640 DP 752011 Lot 1 DP 668227
Community land categorisation	Park
Buildings	Bandstand
Leases / licences	n/a

Heritage and cultural values

- Green Park: SLEP I490 and Darlinghurst Ridge Conservation Area C12

Key Heritage elements:

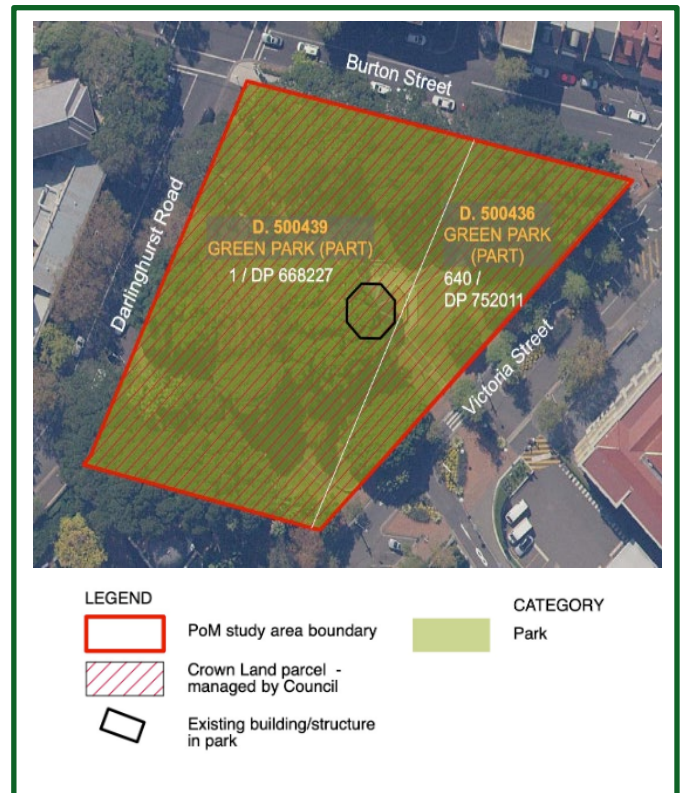
- Victorian era park layout
- Bandstand/Rotunda
- Memorials

Environmental and landscape values

- Moderately sloping landform which can be challenging to accessible access across park
- Pathways are typically edged with raised kerbs
- Victorian park character
- Active village street frontages
- Expansive grassed slopes
- Mature Fig canopy

Reserve development

- The Crown reserves were dedicated in 1871 and 1875 for public recreation



Facilities	Usage	Condition
Bandstand/Rotunda	n/a	Very Poor (5)
Gay & Lesbian Holocaust Memorial	n/a	Excellent (1)
AIDS Memorial	n/a	Proposed
Canopy Fountain	n/a	Good (2)
Park furniture - Seating	General public	Fair to Good
Park furniture – Lighting	General public	Fair to Good
Footpaths	General public	Fair to Good

Reserve usage

- Place to sit, relax, eat lunch, meet with friends,
- Walk through

HOLLIS PARK

Park details at a glance

Item	Description
Location	Wilson Street, Newtown
Ownership	Crown (The State of New South Wales), City as Roads Authority
Crown Reserve No. and purpose	D.500165, Public Recreation, 4/6/1913 D.500301, Public Recreation, 8/4/1914
Zoning	RE1 Public Recreation
Area	2,041.08m ² , 2,644.07m ²
Lot & DP	Lots 33-36 DP 4656 Lot 1 DP 135315
Community land categorisation	Park
Miscellaneous land	Road Reserve (managed by City as Roads Authority)
Buildings	n/a
Leases / licences	n/a

Heritage and cultural values

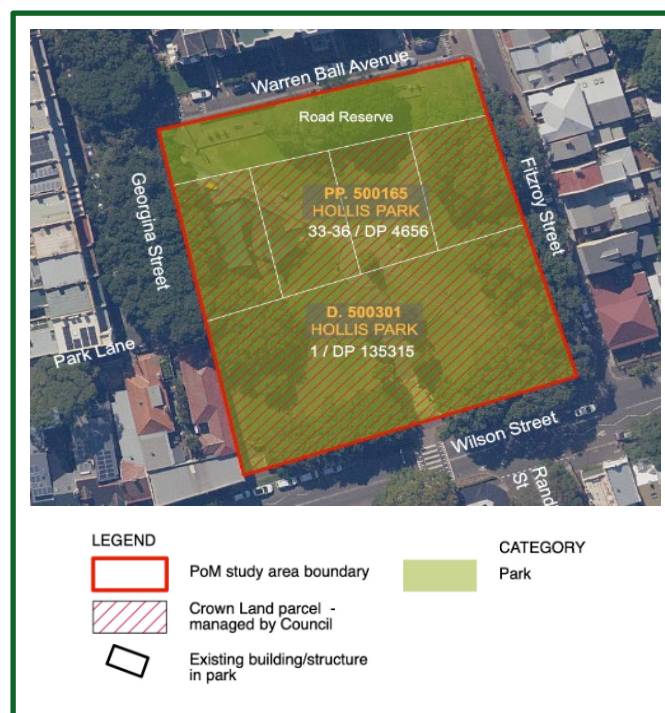
- Associated with 1972 establishment of Murawina (meaning black woman) Aboriginal nutrition and childcare facilities, education nutrition serving inner-city Aboriginal community
- Hollis Park, Newtown: SLEP I1041

Key Heritage elements:

- Early 20th Century Victorian park layout
- Warren Ball obelisk
- Significant trees
- Lamps - replicated gas lighting

Environmental and landscape values

- Early 20th Century Victorian park character
- Moderately sloping landform with built edges to park boundaries
- Accessible access is challenging
- Mature Fig canopy
- Play space with diverse range of equipment



Reserve development

- The Crown reserves were dedicated in 1913 and 1914 for public recreation

Facilities	Usage	Condition
Playground	General public	Excellent (1)
Hollis Park Obelisk	n/a	Average (3)
Drinking Fountain	General public	Fair to Good
Park Furniture	General public	Fair to Good
Footpaths	General public	Fair to Good

Reserve usage

- Seating, and open grass areas for picnics, relaxation
- Walk through
- Access to play equipment
- Small community events

ROBYN KEMMIS RESERVE

Park details at a glance

Item	Description
Location	Franklyn Street, Glebe
Ownership	Crown (The State of New South Wales)
Crown Reserve No. and purpose	R.1003888, Public Recreation, 17/2/2006
Zoning	RE1 Public Recreation
Area	1,117.06m ²
Lot & DP	Lot 102 DP 1086782
Community land categorisation	Park
Buildings	n/a
Leases / licences	n/a

Heritage and cultural values

Key Heritage elements:

- Named in honour of Councillor Robyn Kemmis

Environmental and landscape values

- Neighbourhood play space and green space
- A triangular shaped reserve with park frontage onto Franklyn Street.
- Other park boundaries are enclosed by the rear of adjoining residential properties.
- Small reserve with level open grassed areas, softfall surfacing for playspace and mix of tree planting providing a shady space. Small areas of understorey planting to the western boundary.

Reserve development

- The Crown reserve was dedicated for public recreation in 2006



Facilities	Usage	Condition
Playground	General public	Good (2)
Park furniture - seating	General public	Fair to Good
Park furniture – Lighting	General public	Fair to Good
Park furniture - signage	General public	Fair to Good

Reserve usage

Informal community activities:

- Place to sit, relax
- Access to fenced play space for children of all ages
- Access to community building

SHANNON RESERVE

Park details at a glance

Item	Description
Location	Crown Street, Surrey Hills
Ownership	Crown (The State of New South Wales)
Crown Reserve No. and purpose	D.500275, Public Recreation, 6/5/1949
Zoning	RE1 Public Creation
Area	2,660.92m ²
Lot & DP	Lot 7069 DP 93609
Community land categorisation	Park
Buildings	n/a
Leases / licences	n/a



Heritage and cultural values

- Shannon Reserve, Surrey Hills: SLEP Moore Park Conservation Area C60

Key Heritage elements:

- Shannon Reserve Dedication Stone and plaque
- Low brick wall and perimeter hedging (post 1943)
- London Plane Trees
- Axial pathways
- Ground inlay / interpretation
- Possible archaeological remains associated with the air raid shelters constructed during WWII

Environmental and landscape values

- Village green / square open space with three distinct character areas – hardscape square at the southern end, central activity area with new playspace, open grassed zone to the north and western boundary
- A broadly level surface, slopes to the east, fringed by formal planting beds, clipped hedges.
- Boundaries are defined by low brick walls
- Mix of deciduous tree species are dispersed throughout the open lawn areas
- Path network on desire lines through the park

Reserve development

- The Crown reserve was dedicated in 1949 for public recreation
- Park upgraded in 1994
- Recent playspace refurbishment completed 2020

Facilities	Usage	Condition
Playground	General public	Excellent (1)
Public Art	n/a	Average to good
Park Furniture - Seating	General public	Average to good
Park Furniture - Lighting	General public	Average to good
Hardstand pavement	General public	Average to good
Footpaths	General public	Average to good
Boundary walls	n/a	Average to good

Reserve usage

- Access to children's play space and equipment
- Place to sit, relax, eat lunch
- Community events, Surrey Hills Markets and festivals

City of Sydney Policy framework

The City of Sydney has developed an extensive range of policies which provide guidance to decision-making. A number of these influence planning and management decision making for open space.

In some cases, these documents should always guide reserve planning and management having regard for the reserve purpose and core objectives of the community land category.

A summary of the key policies and their relationship to open space planning and management are as follows:

Purpose	Key principles	Implications for the plan of management
---------	----------------	---

A City for All- youth action plan 2017-2027

<p>Articulates the outcomes that the City wants to achieve for young people, as well as a vision for ensuring that Sydney continues and strengthens its status as a youth-friendly city.</p> <p>This plan applies the framework of social sustainability, which puts people at the heart of cities and recognises that personal wellbeing impacts on, and is impacted by, the collective wellbeing of the community.</p>	<ul style="list-style-type: none"> – Inclusive: young people have opportunities to succeed – Connected: young people feel connected and welcomed in their community – Liveable: young people live safe and healthy lives – Engaged: young people have a voice and can influence change 	<p>Planning and management of open space must recognise youth as a key existing and potential user of open space facilitating opportunities for youth gather and interact and to undertake activities relevant to a diverse demographic.</p>
--	--	--

Asset Management Policy 2016

<p>To ensure that the City has information knowledge and understanding about the long-term and the cumulative consequences of being the custodian of public infrastructure.</p> <p>This is achieved by ensuring that the systems and processes are in place to enable people to determine the most effective and efficient options for delivering infrastructure related services while controlling exposure to risk and loss</p>	<ul style="list-style-type: none"> – Take a lifecycle approach and apply a whole of life – Sustainable environmental performance – Best value – balance financial, environmental and social aspects to achieve best value – Long-term financial plans – up to date infrastructure asset information to inform decisions – Sharing of asset data through digital platforms – Service levels – infrastructure asset service levels will be clearly defined – Manage risks associated with infrastructure assets; and – Continuous improvement of asset management practices 	<p>Implementation of park improvements must use the City's established materials and treatments systems where applicable. Maintenance must be systematic and pro-active to optimise the safe useful lifespan of parks materials finishes and elements.</p>
---	--	--

General Crown Reserve Draft Plan of Management

Purpose	Key principles	Implications for the plan of management
---------	----------------	---

Community Gardens Policy 2016

<p>Outlines a framework for community gardeners to grow fresh organic produce to supplement their groceries and to develop friendships, socialise with neighbours and to connect with residents in their local community</p> <p>Community gardens connect with vibrant local communities and economies to create a space for people to meet and share knowledge, learn new skills and harvest in a harmonious way. These activities encourage interaction between diverse people in passive recreation and gardening pursuits</p>	<ul style="list-style-type: none"> – Promote community gardens as demonstration sites where people can meet, work together, build stronger community relationships and learn about sustainability; – Document and standardise processes, procedures and criteria; – Help increase the number of community gardens according to the City's capacity; community need and availability of appropriate sites; – Clarify the rights and responsibilities of all stakeholders involved; – Support community gardens to become self-managed and encourage community ownership; – Recommend the development of new community gardens on land established for community use as part of proposed park upgrades and developments. – Ensure that there is potential for a community garden within a kilometre (a 15 minute walk) of the dwellings of most city residents; – Promote access for the community to fresh, organic and locally produced herbs, vegetables and fruit; – Ensure gardens are well maintained by the garden members to demonstrate a high standard to the community 	<p>Consideration and implementation of community gardens must be done in accordance with the Community Gardens Policy 2016 in particular the principles and site selection criteria. Creation of a community garden to a specific site must also have regard for conservation of the specific park values and the core objectives of the applicable community land category.</p>
---	--	--

Inclusive and accessible public domain policy 2019

<p>Outlines the City's vision is for an inclusive and accessible public domain which:</p> <ul style="list-style-type: none"> – provides equity of access in the public domain for people with disability, – provides people with disability with more equitable opportunities to participate in employment and social and cultural life in the City of Sydney, – enables people with disability to visit, travel through, explore and enjoy the City's outdoor spaces with independence and dignity, and – enables people with disability to make informed decisions about their journey in the public domain. 	<p>When planning parks and playgrounds, the City adopts a network approach to ensure that within a network of parks within each neighbourhood, a variety of experiences and amenities are provided.</p> <ul style="list-style-type: none"> – All City parks, including pocket parks and playgrounds will be designed to include a continuous accessible path of travel to key elements in the park, and ensure that permanent furniture is accessible and inclusive of people with a range of disabilities. Inclusive play elements and play spaces will be strategically located across the City's networks of parks and play spaces. – The design of the City's neighbourhood and iconic parks will consider the inclusion of socially supportive amenities, such as accessible public toilets and on site mobility parking spaces where feasible, taking into account existing amenities nearby 	<p>Planning design and management of reserves shall implement the vision and principles of the Inclusive and accessible public domain policy 2019, and relevant standards and design codes.</p>
--	--	---

General Crown Reserve Draft Plan of Management

Purpose	Key principles	Implications for the plan of management
---------	----------------	---

Markets Policy 2019

Establishes the City of Sydney's approach to approval of markets and the level of commitment it requires from market operators to achieve quality market operations. It aims to facilitate well managed markets that help to support and contribute to local communities, complementing the offerings of local businesses	<p>The City will:</p> <ul style="list-style-type: none"> – apply a consistent assessment framework to the approval of Market Site Applications and Market Proposals – require Market Operators to demonstrate capacity to meet community needs, contribute to social cohesion, strengthen the local economy, and complement the offerings of local businesses – consult the community about new Market Proposals by providing consultation opportunities for the community to comment. 	Planning design and management of reserves shall implement the principles of the community gardens policy 2019, having regard for conservation of the specific park values and the core objectives of the applicable community land category.
---	---	---

Mobile Voluntary Services Policy 2020

<p>Recognises and values the contribution made by mobile voluntary services within the inner city in supporting people experiencing homelessness, food insecurity and disadvantage.</p> <p>The City will work with mobile voluntary services to facilitate the delivery of effective and responsible services that meet the needs and rights of service users, while using public places in a responsible and respectful manner</p>	<p>The Policy seeks to guide the City's role in assisting disadvantaged persons in:</p> <ul style="list-style-type: none"> – ensuring equitable access to public places; – balancing the needs of all users of public places including mobile voluntary services, people experiencing homelessness, pedestrians, local residents and businesses; – providing public places that are clean, safe with high level amenity; – encouraging responsible behaviour by all people in our public places, whilst acting to ensure that disadvantaged people are not discriminated against and are treated with compassion and respect; – investigating and respond to community feedback and complaints about the improper use of public places, and; – considering appropriate action using the City's regulatory powers and the City's Compliance Policy to ensure that public places are safe and accessible to all users 	Planning design and management of reserves shall implement the principles of the mobile voluntary services policy 2019, having regard for conservation of the specific park values and the core objectives of the applicable community land category.
---	---	---

Busking & Aboriginal & Torres Street Islander Policy 2019

<p>Outlines the criteria for exemptions for cultural practitioners as well as the criteria for giving or receiving an approval to busk, the conditions of the approval and regulations that apply to busking in the City of Sydney</p>	<p>Key Principles:</p> <ul style="list-style-type: none"> – Sydney has a strong tradition of busking and buskers contribute to a sense of place and the character of the city – Buskers make an important contribution to the cultural life of the city and help build a social city – Buskers contribute to the tourist experience of Sydney and drive foot-traffic 	Planning design and management of reserves shall consider the potential for busking specific to each site, and its related carrying capacity, management of impacts on other park values, uses, and neighbours, and the core objectives of the applicable community land category.
--	---	--

General Crown Reserve Draft Plan of Management

Purpose	Key principles	Implications for the plan of management
	<ul style="list-style-type: none"> – Busking is a legitimate means for professional artists and performers to make income. – Busking is a legitimate means for hobbyists, amateur performers, enthusiasts or anyone to express themselves creatively in the public domain. – Busking is an important part of the ecology of the creative industries. – The practice of Aboriginal and Torres Strait Islander Cultural Heritage is a unique and important activity that takes place in the public domain. – Regulation of busking activity should expect nothing more or less of buskers than any other person or group of people using shared public space. – Other users of public space, residents, business owners and workers in the city have a right to quietly enjoy the city's open spaces. 	

Outdoor Dining Policy 2016

To set out the circumstances and conditions under which Council will issue approvals for outdoor dining on the public footway and other similar public domain areas	<p>To promote public access and well managed outdoor dining on footways and in parks, Council will consider the following (summary of items relevant to open space):</p> <ul style="list-style-type: none"> – promote accessibility on the footway by maintaining a consistent and predictable clear path of travel for all users; – manage neighbourhood amenity through minimising additional noise, visual, and other impacts; – consider the appropriateness of applications for approval against Council's adopted guidelines; 	Planning design and management of reserves shall consider the potential for outdoor dining specific to each site, and its related carrying capacity, management of impacts on other park values, uses, and neighbours, and the core objectives of the applicable community land category.
---	--	---

Public Art Policy 2016

To reflect the City's commitment to the development of a tolerant, diverse, prosperous and sustainable city which values its rich natural, cultural and urban heritage	<p>As the most visible and accessible art form, public art plays a role of unprecedented importance in contributing to the poetic dimension of the city. Thriving art and culture are the great indicators of a city's pulse and should have a palpable presence throughout the city. Guiding Principles include:</p> <ol style="list-style-type: none"> 1. Align significant City Art projects with major Sustainable Sydney 2030 urban design projects 2. Recognise and celebrate Aboriginal stories and heritage in public spaces 3. Aboriginal artists will foster awareness in the local community of a history and histories of the local land and its original peoples. 4. Support local artists and activate city places through temporary art projects 5. Support vibrant places in Village Centres with community art and City Art projects 	<p>Planning design and management of reserves shall consider the potential for public art specific to each site including both temporary and permanent installations.</p> <p>Temporary installations may be preferred generally as these provide a greater level of flexibility and capacity to adapt and evolve the character of spaces.</p> <p>This shall include consideration of the reserves carrying capacity, management of impacts on other park values, uses, and neighbours, and the core</p>
--	--	---

General Crown Reserve Draft Plan of Management

Purpose	Key principles	Implications for the plan of management
	<ol style="list-style-type: none"> 6. Promote high quality public art in private development 7. Support stakeholder and government partners to facilitate public art opportunities 8. Manage and maintain the City's collection of permanent art works, monuments and memorials 9. Initiate and implement programs to communicate, educate and engage the public about City Art <p>Intended public art outcomes applicable to Crown Reserves include:</p> <ul style="list-style-type: none"> – The integration of art into the fabric of the city in ways that will reflect, respond and give meaning to Sydney's unique environment, history and culturally diverse society. – A commitment to excellence, innovation and diversity in keeping with the aesthetic and cultural significance of the city's public domain and with the dynamic and experimental nature of contemporary art practice. – Nurturing the city as a creative environment in which opportunities for artists and their role in the community can flourish and expand. – Encouragement of a greater contribution by artists to the design and development of the public domain by implementing collaborations between artists, architects, landscape architects, urban designers and planners in relevant Council capital works projects. – Involvement of Sydney's diverse communities in the creative planning process to encourage civic pride and developing the distinct local character of the city's villages. – Increased understanding and enjoyment of public art and an awareness and appreciation of the significant benefits provided by a rich and diverse artistic environment. – Providing a sustainable framework for the care and conservation of the City's unique cultural heritage. – Support/direct any temporary public art projects in accordance with the Public Art Strategy. 	<p>objectives of the applicable community land category.</p>

General Crown Reserve Draft Plan of Management

Purpose	Key principles	Implications for the plan of management
---------	----------------	---

Tree Management Policy 2013

<p>The purpose of this policy is to:</p> <ul style="list-style-type: none"> – establish the City of Sydney's commitment and future strategic direction for tree planting, protection, management and maintenance of its urban forest – address tree management and maintenance issues faced by the City of Sydney – provide a framework for decision making, documentation and standardised processes to ensure consistency in the management of the City of Sydney's urban forest 	<p>The objectives of the Tree Management Policy are to:</p> <ul style="list-style-type: none"> – prioritise the maintenance and protection of the existing tree population – broaden the emphasis of urban tree management to include urban forestry principles, with trees managed as a collective asset, to maximise the benefits canopy cover provides – improve the quality and quantity of City of Sydney's canopy cover – increase species diversity and improve the age spread of the urban forest – recognise and protect trees considered significant due to heritage, cultural, social and ecological criteria – increase awareness and educate the community, developers and Council staff on the value of trees in the urban landscape – enhance the City of Sydney's reputation within the community as a steward and manager of trees. 	<p>Planning design and management of reserves shall recognise the key priority of effective tree management, however where conflicts arise (e.g. poor tree health) decision making is to be guided by the policy.</p> <p>Management shall also consider impacts on other park values, uses, and neighbours, and the core objectives of the applicable community land category in considering actions.</p>
---	---	---

Naming Policy 2018

<p>This policy provides clear direction for the naming of suburbs, roads, parks, open spaces, places and buildings that are owned, operated or managed by the City of Sydney</p>	<ol style="list-style-type: none"> 1. Names must be meaningful, clear and concise, and can reflect the location and purpose. 2. Names must have local or cultural relevance, reflecting the heritage and history of local people, events, the community or landscape. Names should not refer to or reflect current commercial businesses in that location. 3. Dual naming to restore traditional Gadigal names to geographical features is strongly supported. Aboriginal names are encouraged and shall be in the local Gadigal language, chosen in consultation with the Metropolitan Local Aboriginal Land Council and the City's Aboriginal and Torres Strait Islander Advisory Panel. 4. Names acknowledging the multicultural nature of our society and gender diversity are encouraged. 5. Place names assigned by the Geographical Names Board and road names should not be changed, except where necessary to avoid ambiguity or duplication. These names become part of the historical fabric of a community and should be respected as such. 	<p>Management of reserves shall consider the potential for dual naming to reflect Gadigal connections, and to contribute to First nations recognition and acknowledgment.</p>
--	--	---

General Crown Reserve Draft Plan of Management

Purpose	Key principles	Implications for the plan of management
	<ol style="list-style-type: none"> 6. Names that perpetuate the names of eminent persons, such as historical figures, prominent local residents or community identities, may be considered. These names will normally only be applied posthumously, however there may be occasions when a name is suggested which honours a living person. Such a person's contribution to the local community should have been of outstanding benefit to the community. Ownership of the land is not sufficient reason for the application of the owner's name to a geographical feature. 7. The name of a person still holding public office will not be used. 8. Long and clumsily constructed names and names composed of two or more words (for placenames) or more than three words (for roads) should be avoided except where culturally appropriate. 9. Repetition of commonly used names will be avoided. 10. Duplication of road names within the local government area, and within a 10 kilometre radius must be avoided. 11. Names for different parts of the same feature, such as a park or building, will be avoided whenever possible and the one name applied throughout its entire space unless there are very clearly defined boundaries between one space and another or distinct features warranting a separate name. 12. Where names have been changed or corrupted by long established local usage, it is not usually advisable to attempt to restore the original form; that spelling which is sanctioned by general usage should be adopted. 13. Names considered offensive or likely to give offence should not be used. 14. Names must conform to the principles in the Place Naming Policy and the NSW Addressing User Manual endorsed by the Geographical Names Board, particularly in relation to language, grammar and duplication. 15. The community will be consulted on all naming proposals through public exhibition 	

City of Sydney Strategy framework

The City of Sydney has also developed a range of strategies focused on specific issues and open space considerations relevant to open space planning and management. While strategies are high-level guideline documents and usually carry less influence than policies, they can provide important references for planning and management decision making for open space.

Purpose	Key principles	Implications for the plan of management
---------	----------------	---

A City for All - Inclusion (Disability) Action Plan 2017-2021

This plan includes a series of actions designed to actively address barriers faced by people with disability in all age groups. They build on the success of previous plans, and harness new and emerging opportunities

This *Inclusion (Disability) Action Plan* will set the framework and priorities for:

- meeting the City's responsibilities under the NSW Disability Inclusion Act 2014, the (Cth) Disability Discrimination Act 1992 and the NSW Carers (Recognition) Act 2010
- identifying barriers to inclusion, and developing strategies and actions that will respond to and address those barriers
- continuous improvement in relation to inclusion and access for people with disability
- achieving outcomes for people with disability and/or caring responsibilities in line with the City of Sydney's Social Sustainability Policy - *A City for All* and forthcoming action plan.

Four key directions

The action plan focuses on four key directions:

- the development of **positive community attitudes and behaviours** towards people with disability and carers
- the creation of more **liveable communities** for people with disability and carers
- the achievement of a higher rate of **meaningful employment** participation by people with disability and carers through inclusive employment practices
- more **equitable access to mainstream services** for people with disability through better systems and processes.

Planning design and management of reserves shall implement the relevant directions of the strategy and ensure design and implementation is undertaken in accordance with relevant standards and design codes.

This shall include reference to the Inclusive and accessible public domain Policy 2019.

Purpose	Key principles	Implications for the plan of management
---------	----------------	---

Adapting for Climate Change - A long term strategy for the City of Sydney 2019

<p>This strategy sets out the impacts the changing climate will have on our city, the risks these pose and the actions the City of Sydney, businesses and communities must take now, and in the decades to come. This is the City's first adaptation strategy and has been written to raise the issues and opportunities that adapting to climate change will present. As our understanding of the risks and responses develops over time, so the adaptation strategy will evolve in the years to come. This will ensure that the City of Sydney continues to be a resilient and globally competitive place to work and live.</p>	<p>In 2070 in Sydney, the changing climate will likely mean:</p> <ul style="list-style-type: none"> – An increase in average temperatures – An increase in extreme heat days – An increase in air particulates and pollution – An increase in rainfall intensity and storm events – Continued variability in annual rainfall – An increase in bushfire conditions – An increase in drought conditions – An increase in sea levels and the extent of coastal inundation <p>The plan describes five principles for management actions:</p> <ol style="list-style-type: none"> 1. Resilient and long-term: politically sustainable, economically efficient and socially inclusive 2. Flexible and dynamic: able to evolve and respond to unexpected trends and consequences 3. Based on the most up-to-date data 4. Able to harness natural environmental systems 5. Delivered via a comprehensive and effective communication strategy. 	<p>Planning design and management of reserves shall apply the principles of the strategy and will monitor the ongoing development of climate science as applicable to open space management.</p> <p>Management shall also consider impacts on other park values, uses, and neighbours, and the core objectives of the applicable community land category in considering actions.</p>
---	---	--

Wayfinding Strategy Report 2012

<p>A Wayfinding System that allows the delivery of a more legible public domain that encourages people to walk with comfort and confidence around the City of Sydney.</p> <p>The strategy provides a guiding document to inform future design and is supported by separate style guides and element manuals.</p>	<p>For residents, visitors and commuters a coherent wayfinding system throughout the Sydney LGA is paramount. The system requires two conventions – i.e. naming and placement policies; and visual information such as maps and signs.</p> <p>The principal requirements are:</p> <ul style="list-style-type: none"> – Enabling pedestrians to assess and plan (to “understand”) their journeys and find their way about at street level with ease and confidence; – To help build up and reinforce an effective and reliable cognitive map of Sydney for pedestrians; – To create a common and constantly updated central information system flexible enough to be applied in all relevant forms and media, such as maps, signs and websites; – Provide the information overlay to the Liveable Green Network across the City of Sydney local government area. 	<p>Planning design and management of reserves shall apply the principles of the strategy, and any implementation will be guided by the strategy and supported documentation.</p> <p>Management shall also consider impacts on other park values, uses, and neighbours, and the core objectives of the applicable community land category in considering actions.</p>
--	---	--

General Crown Reserve Draft Plan of Management

Purpose	Key principles	Implications for the plan of management
---------	----------------	---

Asset Management Plan 2020

Asset management is the combination of management, financial, economic, and engineering and other practices applied to physical assets with the objective of providing the required level of service in the most cost effective manner."

It is a "whole of life" approach that includes planning, acquisition, operation, maintenance and disposal of assets.

This report assessed the City's current resources and evaluated the efficacy of current asset management.

The policy objectives are:

1. Provide infrastructure and services to sustain the City of Sydney communities
2. Implement a life-cycle approach to the management of infrastructure and public assets
3. Ensure that service delivery needs are the primary driver for infrastructure asset management practices
4. Provide a sustainable funding model that provides assets aligned with the City's long-term plans and community needs
5. Develop and implement best value environmentally sustainable asset management practices
6. Provide reliable asset and infrastructure data through supported digital platforms

The plan identifies considerations for management of Parks and open spaces and Trees. The Plan then assesses current performance against identified service levels

Planning design and management of reserves shall apply the principles and systems of the strategy and the associated maintenance service levels as defined by the City.

Management shall also consider impacts on other park values, uses, and neighbours, and the core objectives of the applicable community land category in considering actions.

City Centre Public Art Plan 2013

The City Centre Public Art Plan aims to bring inspiring public art with a permanent legacy to Sydney's residents and visitors

Guiding Principles

- Transforming Sydney with a legacy of permanent public art works
- Supporting events and temporary works of art
- Allowing quality, diversity, inclusivity and fairness
- Working with our history, our stories and our existing public art
- Considering children
- Looking to the future, remaining flexible and being open to change
- Ensuring amenity and sustainability
- Creating partnerships

Opportunities

- Use our distance as a chance to be original
- Involve artists for successful outcomes
- Use art to make the city more legible and easier to navigate
- Try a variety of art types and approaches
- Share initiatives with government agencies, arts groups, and other countries and leading cities
- Develop local public-private initiatives
- Consider other opportunities

Planning design and management of reserves shall consider the potential for public art specific to each site including both temporary and permanent installations. This shall include reference to the Public Art Policy 2016.

Management shall also consider impacts on other park values, uses, and neighbours, and the core objectives of the applicable community land category in considering actions.

General Crown Reserve Draft Plan of Management

Purpose	Key principles	Implications for the plan of management
---------	----------------	---

City North Public Domain Plan 2015

The Plan outlines ideas for improving City streets and open spaces which can be used as guidelines for future development. It forms part of the overall City Centre Public Domain Plan

Guiding directions include:

- Strengthen north-south streets and encourage east-west pedestrian permeability
- Reinforce a connected public space at Circular Quay and create a unified square from the building edge to the water
- Reinforce Martin Place as the City's premier civic and public space
- Create a linked series of park and garden spaces and upgrade existing open spaces
- Support and encourage active building edges and high-quality activation of the public domain

Planning design and management of reserves in the plan area shall apply the identified principles and strategies (note these have been included where applicable in management targets and Strategies in the PoM.

Management shall also consider impacts on other park values, uses, and neighbours, and the core objectives of the applicable community land category in considering actions.

City Plan LSPS 2036

Since 2008, the City of Sydney has been working towards a vision of a green, global and connected city. Sustainable.

Sydney 2030 captures this vision and the ambitious environmental, economic, social and cultural goals arising.

The plan reinforces 10 villages, reflecting the historic growth of Sydney. Each has its own character and contributes to the wide diversity of housing, jobs, services and recreation available to residents. The village areas typically have a centre or high street which provides services, fresh food, entertainment options and infrastructure for the community within a 5 to 10-minute walk for most people.

The plan identifies the following planning priorities

Infrastructure

- Movement for walkable neighbourhoods and a connected city
- Align development and growth with supporting infrastructure
- Supporting community wellbeing with social infrastructure

Liveability

- A creative and socially connected city
- Creating great places
- New homes for a diverse community
- Productivity
- Growing a stronger, more competitive Central Sydney
- Developing innovative and diverse business clusters in City Fringe
- Protecting industrial and urban services in the Southern Enterprise Area and evolving businesses in the Green Square-Mascot Strategic Centre

Sustainability

- Protecting and enhancing the natural environment for a resilient city

Planning design and management of reserves shall apply the identified principles and strategies of the LSPS.

Management shall also consider impacts on other park values, uses, and neighbours, and the core objectives of the applicable community land category in considering actions.

General Crown Reserve Draft Plan of Management

Purpose	Key principles	Implications for the plan of management
	<ul style="list-style-type: none"> – Creating better buildings and places to reduce emissions and waste and use water efficiently – Increasing resilience of people and infrastructure against natural and urban hazards <p>Governance and implementation</p> <ul style="list-style-type: none"> – Open, accountable and collaborative planning 	

Climate Emergency Response 2020

The City of Sydney Council declared a climate emergency in June 2019, stating that climate change poses a serious risk to the people of Sydney.

The plan sets science-based targets that guided its work to reduce carbon emissions and make operations more resilient to climate-related hazards

Generally, the City seeks to take bold steps to reduce the city's environmental footprint and promoting transformative change in energy production, resource consumption, water use and climate adaptation in a way that is inclusive and supports a just transition across all communities.

Principles

- City actions are at a pace and magnitude commensurate with science-based climate observations and models to limit global heating to less than 1.5°C above pre industrial levels
- Actions are inclusive and acknowledge the First Peoples of Australia and the need for a just transition
- All City functions, activities and decision-making will address the climate emergency
- The City can influence others through its networks, functions and activities
- Staff across the organisation are champions of change
- Pro-active, timely communication and reporting are essential to influence and mobilise action
- An empowered community will take positive climate actions and be more resilient to future challenges

Goals

1. Address climate emergency priorities in our major strategies, projects and service delivery
2. Decarbonise the City's procurement of products, services and assets
3. Empower staff to act more sustainably and become more resilient
4. Streamline governance processes to support significant climate action
5. Use the planning system to support climate emergency priorities
6. Develop, prioritise and embed communications about the climate emergency
7. Support the community to take further action to address the climate emergency
8. Help the community access onsite and offsite renewables, including
9. 100 per cent GreenPower

Planning design and management of reserves shall apply the identified principles and goals for the climate action plan.

Management shall also consider impacts on other park values, uses, and neighbours, and the core objectives of the applicable community land category in considering actions.

General Crown Reserve Draft Plan of Management

Purpose	Key principles	Implications for the plan of management
	<ul style="list-style-type: none"> 10. Substantially increase the number of existing buildings that achieve net zero energy use and switch to recycled water within 10 years 11. Share resources and work collaboratively with other councils 12. Collaborate with allies to drive change to state and federal policies and regulations to transition to a zero carbon economy, and ensure sustainable waste and water policies 	

Community Safety Action Plan 2019-2023

<p>Sets out the City of Sydney's contribution to making Sydney a safe and resilient place to live, visit, work and study. It describes the commitment to safety and our areas of focus for the next five years.</p>	<p>Priority areas are as listed</p> <p>Safe streets and spaces</p> <ul style="list-style-type: none"> – Increase actual and perceived public safety in city streets and spaces and ensure they are well lit and attractive – Promote a creative and vibrant night life to reduce alcohol related anti-social behaviour – Improve road, public transport and pedestrian safety <p>Crime prevention and response</p> <ul style="list-style-type: none"> – Reduce the opportunities for crime to occur – Contribute to reducing domestic and family violence and sexual assault – Contribute to preventing child abuse and supporting effective responses <p>Ready and resilient</p> <ul style="list-style-type: none"> – Ensure Sydney knows how to prevent, prepare for, respond to and recover from emergencies – Build resilient and connected communities to increase safety – Reduce harm from drugs and alcohol <p>A safe global destination</p> <ul style="list-style-type: none"> – Ensure visitors feel safe and welcome in Sydney – Promote Sydney's Safety Globally – Help international students to live, study and work safely in Sydney 	<p>Planning design and management of reserves shall apply the identified priority areas of the Community safety Action Plan.</p> <p>Management shall also consider impacts on other park values, uses, and neighbours, and the core objectives of the applicable community land category in considering actions.</p>
---	---	--

Cultural Policy-and-Action-Plan 2014-2024

<p>Plan for how the City of Sydney can unlock the creative potential of its city and its creative community</p>	<p>Vision</p> <ul style="list-style-type: none"> – Creativity in Sydney is visible – Innovation is central to Sydney's creative community – Sydney takes pride in its Aboriginal history, culture and its contemporary expression – Cultural experiences and creative opportunities are valued and accessible – Sydney's diversity is prized and promoted 	<p>Planning design and management of reserves shall apply the vision, strategic priorities, and founding principles of the Action Plan.</p> <p>Management shall also consider impacts on other park values, uses, and neighbours, and the core objectives of the applicable community land category in considering actions.</p>
---	---	---

General Crown Reserve Draft Plan of Management

Purpose	Key principles	Implications for the plan of management
	<ul style="list-style-type: none"> – Sydney welcomes bold ideas, new visions and unexpected connections – Curiosity is encouraged and opportunities for discovery are everywhere <p>Strategic Priorities</p> <ul style="list-style-type: none"> – Precinct distinctiveness and creativity in the public domain – New avenues for creative participation – Sector sustainability: surviving and thriving – Improving access, creating markets – Sharing knowledge – Global engagement <p>Foundation principles</p> <ul style="list-style-type: none"> – Culture and creativity are central to all our lives and to our community's sense of identity and confidence. – Creativity is part of the human condition, and its expression defines and reflects our culture and our community. – Culture reflects, reinforces, and shapes our identity: individual identity, identification with a community and our connections to place. – Aboriginal culture, now globally recognised as the world's oldest continuous living culture, is our city's most unique and enduring asset. – Sydney's citizens and visitors have the right of access and contribute to the city's cultural and creative life and its history and heritage. – Sydney's cultural riches arise from a plethora of diverse activity at all scales, arising from the 200 nationalities that make up our city, and the many diverse communities that form bonds around identity, interests, and place. – Cultural and creative activity contribute to many community concerns and priorities including economic, social, behavioural and environmental objectives through catalysing civic participation, promoting stewardship of place, preserving cultural heritage, exploring the challenges of climate change and supporting economic development. – Initiative, experimentation and enterprise is the bedrock of fermenting a creative culture. Creative risk is a pre-condition of innovation and industry growth. 	

General Crown Reserve Draft Plan of Management

Purpose	Key principles	Implications for the plan of management
---------	----------------	---

Cycling Strategy and Action Plan 2018-2030

<p>Plan for making bicycle transport easier and safer, so it is an attractive and feasible option for more people.</p> <p>Recognises a 2030 target for 10 per cent of all trips in the city to be made by bike.</p>	<p>Priorities</p> <ol style="list-style-type: none"> 1. Connecting the network 2. Supporting people to ride 3. Supporting businesses 4. Leadership and advocacy 	<p>Planning design and management of reserves shall apply the actions of the Cycle Plan in particular with regard to Connecting the Network.</p> <p>Management shall also consider impacts on other park values, uses, and neighbours, and the core objectives of the applicable community land category in considering actions.</p>
---	--	--

Cycling Strategy and Action Plan 2018-2030

<p>The master plan proposes to utilise local water resources in a way that represents a radical departure from current practice. The proposed decentralised water system can provide immediate and significant reductions in mains water consumption by using recycled water to cool and green the City contributing towards climate change adaptation</p>	<p>Priorities</p> <ol style="list-style-type: none"> 1. Reducing 10 per cent of mains water demand within the City of Sydney LGA by 2030 2. Reducing 25 per cent of mains water demand within the City of Sydney's own buildings and operations by 2030 3. Replacing 30 per cent of mains water demand within the City of Sydney LGA with recycled water for non-drinking uses by 2030 4. Reducing 50 per cent of sediments and suspended solids and 15 per cent of nutrients currently discharged into the waterways from stormwater run-off generated within the City of Sydney LGA by 2030. 	<p>Planning design and management of reserves shall apply the priorities of the Master Plan.</p> <p>Management shall also consider impacts on other park values, uses, and neighbours, and the core objectives of the applicable community land category in considering actions.</p>
--	---	--

Environmental Sustainability Strategy 2016-2021

<p>The strategy and action plan addresses the areas of impact, including low-carbon city, water sensitive city, climate resilient city, zero waste city, active and connected city and green and cool city</p>	<p>Issue and Opportunities</p> <ul style="list-style-type: none"> – Energy efficiency – existing buildings contribute around 80% of our city's emissions - Improving energy efficiency will lower energy bills and emissions – Renewable energy at building-scale alone is insufficient to reach our city's renewable energy target of at least 33 000 gigawatt hours of electricity to be produced from renewable sources -The City is exploring opportunities to facilitate Environmental Innovation grants, supporting proponents of community renewable energy projects – Energy storage – batteries have been too expensive for most homes and businesses - The city is looking at opportunities for energy storage on our properties and to support its uptake across the city – Low-carbon technology - Waste heat can be converted into cooling via a heat-driven chiller system, and cogeneration and trigeneration low-carbon technology 	<p>Planning design and management of reserves shall apply the priorities of the Strategy.</p> <p>Management shall also consider impacts on other park values, uses, and neighbours, and the core objectives of the applicable community land category in considering actions.</p>
--	---	---

General Crown Reserve Draft Plan of Management

Purpose	Key principles	Implications for the plan of management
	<p>provide opportunities to reduce emissions</p> <p>Strategies</p> <ul style="list-style-type: none"> – Design for low water demand and drought resilience – Employ water sensitive urban design techniques – Select low water demand plant species – Protect existing healthy trees – Plant well located canopy tree that provides summer shade and light in winter – Supply of quality tree stock – Select local provenance, hardy and resilient plant species – Engage with local Bushcare groups for plant stock/advice – Avoid disturbing existing soil profiles in areas designated for landscaping – Create spaces for community gardens – community gardens are ‘enablers’ creating social connection opportunities for residents, neighbours, businesses – Select residential development plants from BASIX to assist BASIX Water score 	

Greening Sydney Plan 2012

<p>A greener Sydney can assist:</p> <ul style="list-style-type: none"> – To filter and improve the air we breathe – Provide shade for our houses and streets – Regulate sunlight to our houses and streets – Reduce urban run-off and stormwater pollution – Improve the appearance, economic value and liveability of our Cities – Provide a connection to nature in our Cities 	<p>Establishes a target for expanding the urban forest – increasing canopy cover in the City of Sydney by 50% in the year 2030 and by 70% in the year 2050</p> <p>Greener streets</p> <ul style="list-style-type: none"> – Create a liveable green network of streets by planting all footpath location with trees – Plant trees in unused road space – Central landscaped medians, replacing paving with trees and landscape planting <p>More parks and open space</p> <ul style="list-style-type: none"> – Acquire more land for public open space, and tree and landscape planting – Balance recreational and functional requirements of parks – Build habitat parks and landscape City streets to promote and support biodiversity <p>Greening new development and private land</p> <ul style="list-style-type: none"> – Establish guidelines and standards for provision of open space, landscaping and urban canopy in new development – Promote use of green roofs and green walls on new buildings and development – Investigate provision of a grant program to provide funding for residents and 	<p>Planning design and management of reserves shall apply the targets and strategies priorities of the Greening Sydney Plan in particular with regards to:</p> <ul style="list-style-type: none"> - Conservation and consolidation of tree canopy - Supporting within reserves the continuation broader habitat corridors <p>Management shall also consider impacts on other park values, uses, and neighbours, and the core objectives of the applicable community land category in considering actions.</p>
--	--	---

General Crown Reserve Draft Plan of Management

Purpose	Key principles	Implications for the plan of management
	<p>businesses to plant and maintain large canopy trees on their property</p> <p>Green links and urban wildlife corridors</p> <ul style="list-style-type: none"> – Building wildlife corridors and habitat pockets in residential suburbs – Planting on stormwater, gas and power easements main road and rail corridors to create green links – Undergrounding and aerial bundle cabling (ABC) of electricity services to expand and improve the quality of the urban forest <p>Empowering the community to green our city</p> <ul style="list-style-type: none"> – Building social capital by empowering the community to work together to protect and strengthen the urban forest and landscape. – Supporting volunteer groups to revegetate and maintain green space and urban habitat – Developing a Junior Ranger program to encourage children to assist in the maintenance, monitoring and managing of the City's urban parks and landscape – Building community gardens to support residents in sustainable food production and community building – Establishing a City Farm Sustainability Learning Centre 	

Harbour North Public Domain Study 2012

Ideas for improving the public areas of the Harbour Village North precinct of the City which are to be used as guidelines for future development	<p>Guiding directions include:</p> <ul style="list-style-type: none"> – Improve access connectivity and wayfinding – Create a network of linked parks and upgrade existing open spaces – Respect and celebrate heritage, conserve and restore Observatory Hill – Celebrate landform and harbour views – Support Walsh Bay cultural precinct and enhance cultural ribbon connections – Strengthen local communities and support local economies <p>The study notes a series of recommended projects which have been integrated into the PoM as applicable</p>	<p>Planning design and management of reserves in the plan area shall apply the identified principles and strategies (note these have been included where applicable in management targets and Strategies in the PoM).</p> <p>Management shall also consider impacts on other park values, uses, and neighbours, and the core objectives of the applicable community land category in considering actions.</p>
--	--	---

Innovate Reconciliation Action Plan 2015-2017

A RAP is the strategic framework developed by Reconciliation Australia for organisations to document and progress the aims of reconciliation within their sphere of influence. The RAP demonstrates practical actions toward reconciliation. By improving the City's work with Aboriginal and	<p>Key Actions</p> <ul style="list-style-type: none"> – Continue to implement the City's Principles of Cooperation with the Metropolitan Local Aboriginal Land Council. – Engage Aboriginal and Torres Strait Islander communities in the City's projects and decision-making process. 	Management of reserves shall seek to implement the key Actions of the RAP in particular providing a voice for Aboriginal and Torres Strait Islander peoples in Crown reserve management.
---	---	--

General Crown Reserve Draft Plan of Management

Purpose	Key principles	Implications for the plan of management
Torres Strait Islander people, the City can become a more innovative, courageous and respectful organisation.	<ul style="list-style-type: none"> – Contribute to and strengthen networks within the local government sector to promote reconciliation. – Strengthen networks within the RAP community and promote collaboration and knowledge sharing on reconciliation. – Investigate opportunities to support Recognise: the campaign to create constitutional recognition for Aboriginal and Torres Strait Islander peoples. – Recognise Aboriginal and Torres Strait Islander histories, cultures and achievements in Sydney through the Eora Journey: Recognition in the Public Domain. – Promote cultural knowledge and understanding by establishing a local cultural centre. – Celebrate and share Aboriginal and Torres Strait Islander cultures through an annual significant event. – Acknowledge Aboriginal and Torres Strait Islander cultures and histories through the naming of places within the City. – Increase knowledge within the broader community of the history, heritage, cultures and social values of the Aboriginal and Torres Strait Islander communities of Sydney. – Show respect to traditional custodians by continuing to implement the City's Protocols for working with Aboriginal and Torres Strait Islander communities including Acknowledgement of Country and Welcome to Country protocols. – Promote economic prosperity for Aboriginal and Torres Strait Islander peoples in Sydney. – Explore opportunities to increase supplier diversity – Respond to the needs of Aboriginal and Torres Strait Islander communities through local programs and services. – Increase the effectiveness of the City's grant and sponsorship program for Torres Strait Islander groups, organisations and businesses. 	

Park Fitness Equipment Plan 2015

Reflects the Council's commitment to establishing a network of outdoor fitness equipment facilities in the local government area, complementing existing installations. The plan identifies sites and equipment for future facilities	Objectives <ul style="list-style-type: none"> – Increase provision of outdoor fitness equipment, so all members of the community are within 800m of outdoor fitness equipment – Encourage greater participation in physical activity to help the public reach their recommended levels of physical activity 	<p>Investigation and potential for fitness equipment in reserves shall be done in consideration of plan recommendations for siting and equipment.</p> <p>Provision of fitness equipment shall also consider impacts on other park values, uses, and neighbours, and the core objectives of the applicable</p>
---	--	---

General Crown Reserve Draft Plan of Management

Purpose	Key principles	Implications for the plan of management
	<ul style="list-style-type: none"> – Prioritise installation of outdoor fitness equipment to ensure areas with the least fitness equipment are provided for in the next 5 years – Engage the community, promoting greater social inclusion – Ensure best practice planning and design of outdoor fitness equipment facilities <p>Recommendations</p> <ul style="list-style-type: none"> – Bourke Street Park, Woolloomooloo - retain – Embarkation Park, Potts Point - new facility, Parks Fitness Equipment Program – Waterloo Park - new facility, Park Fitness Equipment Program. – Turruwul Park - new facility, Park Fitness Equipment Program. – Gunyama Park - new facility, Masterplan / Capital Upgrade Works. – Alexandria Park - new facility, Park Fitness Equipment Program. – Sydney Park, St Peters - retain. – The General Crown Reserves, Alexandria - removal. – South Sydney Rotary Park - upgrade facility, Park Fitness Equipment Program. – Victoria Park - new facility, Masterplan / Capital Works Upgrade. – Johnstons Creek Parklands - new facility, Masterplan / Capital Works Upgrade. * – Bicentennial Park - removal, replaced by new facility at Johnstons Creek Parklands. * – Wentworth Park, Glebe – retain – Pirrama Park - new facility, Park Fitness Equipment Program – Observatory Hill Park, Millers Point - expanded facility, Park Fitness Equipment Program. 	community land category in considering actions.

Urban Ecology Strategic Action Plan 2014

<p>A vision for the Plan is to restore and conserve resilient urban ecosystems that support a diverse range of locally indigenous flora and fauna species, and in so doing to create a liveable City for all of its inhabitants</p>	<p>Strategic Action Plan</p> <p>Objectives and targets are identified for the following:</p> <p>Locally indigenous vegetation</p> <ul style="list-style-type: none"> – Protect, expand and improve condition of naturally occurring locally indigenous vegetation, including possible remnants. – Increase the extent of bush restoration sites across the LGA and maintain sites in good condition. 	<p>Management of reserves shall seek to implement the key Actions of the Plan where possible.</p> <p>Ecology related actions shall also consider relationship to other park values and uses, and the core objectives of the applicable community land category.</p>
---	--	---

General Crown Reserve Draft Plan of Management

Purpose	Key principles	Implications for the plan of management
	<ul style="list-style-type: none"> Re-establish representative patches of the likely original vegetation communities. <p>Fauna</p> <ul style="list-style-type: none"> Protect and enhance sites that provide habitat for priority fauna species. Increase the distribution and abundance of priority fauna species across the LGA <p>Habitat connections</p> <ul style="list-style-type: none"> Improve habitat connectivity across the LGA, particularly between priority sites, and between identified habitat areas in adjoining LGAs. 	

Urban Forest Strategy 2013

Plan for development and protection of the City's urban forest	<p>Motivations</p> <ul style="list-style-type: none"> Urban forests play a vital role in the health, social framework and economic sustainability of a city Trees improve our air, soil and water quality, while also improving mental health and wellbeing Canopy coverage over paved surfaces is a cost-effective means of mitigating urban heat islands This will also reduce emissions of hydrocarbons involved in ozone depletion, while increasing pavement longevity An Urban Forest Strategy will assist the City in managing the conceptual shift from dealing with trees individually, to managing vegetation as a collective and integrated canopy <p>Key Initiatives and Objectives</p> <ul style="list-style-type: none"> Prioritise maintenance and protection of existing tree population – maximise benefits received from this asset Increase average total canopy cover from current 15/5% to 23.35% by 2030, and then to 27.13% by 2050, through targeted programs for trees in streets, parks and private property Improve age spread of street and park trees by increasing species diversity, while also ensuring the population does not compromise more than 40% for any particular family, 30% for any particular genus, and 10% for any one species The City will engage and educate the community on the benefits of trees and their management requirements, assisting community participation in the greening of Sydney. 	<p>Management of reserves shall seek to implement the key Actions of the Strategy where possible.</p> <p>Tree canopy actions shall also consider relationship to other park values and uses, and the core objectives of the applicable community land category.</p>
--	--	---

General Crown Reserve
Draft Plan of Management

Purpose	Key principles	Implications for the plan of management
Water Savings Action Plan 2012		
Identifies the actions required to sustainably manage potable water consumption while delivering high quality parks and urban landscape	<p>Key Issues</p> <ul style="list-style-type: none"> – Water use is variable – Expectation – Maintenance and water use are directly influenced by expectations for parkland presentation. – Demand – Parks are maintained for the enjoyment and use of the community. Management of parklands and the subsequent water use is influenced by the demands on use for parklands. – Increase in irrigated area – Timing of water restrictions – It should be noted that in 2006 when base line figures for 2030 were taken, Sydney Water had rigorous restrictions on water use in parklands. – Accuracy of information- – Specialised technology and consistency of information – Progression in water management has seen the development of a number of tools for managing water use, and subsequently managing data. Consistency in information is essential when measuring water efficiency. <p>Key actions to be delivered:</p> <ul style="list-style-type: none"> – Exceeding the Sustainable Sydney 2030 target of 10% recycled water usage in the City's Parks; – Change of water consumption measurement from an absolute target to a water efficiency measure of litres per square metre; – Installation of smart meters to improve the measurement of non-potable water use at 30 sites; – Set water budgets for the City's top 30 water using parks which allow for average, dry and wet years; – Construct storm water harvesting and treatments systems at Alexandria Park, Waterloo Oval and Pirrama Park (old part); – Connect Erskineville Oval to the Sydney Park water re-use project; – Upgrade irrigations systems at Alexandria Park, Waterloo Oval, Jubilee Oval and Pirrama Park (old part); and, – Implement an irrigation testing and efficiency program on the top 10 water using parks. 	<p>Management of reserves shall seek to implement the key Actions of the Plan where possible.</p> <p>Tree canopy actions shall also consider relationship to other park values and uses, and the core objectives of the applicable community land category.</p>

