

NORTH ROSEBERY PARK & GREEN LINK

LANDSCAPE CONCEPT DESIGN



Drawing Number	Drawing Title	Scale	Revision
2021_05-CD00	COVER SHEET	NTS	B
2021_05-CD01	PROJECT BACKGROUND & DESIGN APPROACH	NTS	B
2021_05-CD02	LANDSCAPE PLAN 01 - GREEN LINK	1:200 @ A1	D
2021_05-CD03	LANDSCAPE SECTION AA & BB	1:100 @ A1	C
2021_05-CD04	LANDSCAPE PLAN 02 - PARK	1:200 @ A1	B
2021_05-CD05	LANDSCAPE SECTION CC	1:100 @ A1	B
2021_05-CD06	LANDSCAPE SECTION DD	1:100 @ A1	B
2021_05-CD07	PLANTING PLAN AND SCHEDULE	NTS	A
2021_05-CD08	NORTH ROSEBERY PARK PERSPECTIVE	NTS	A

CONTEXT & EXISTING CONDITIONS

NEIGHBOURHOOD CONTEXT



SITE LOCATION

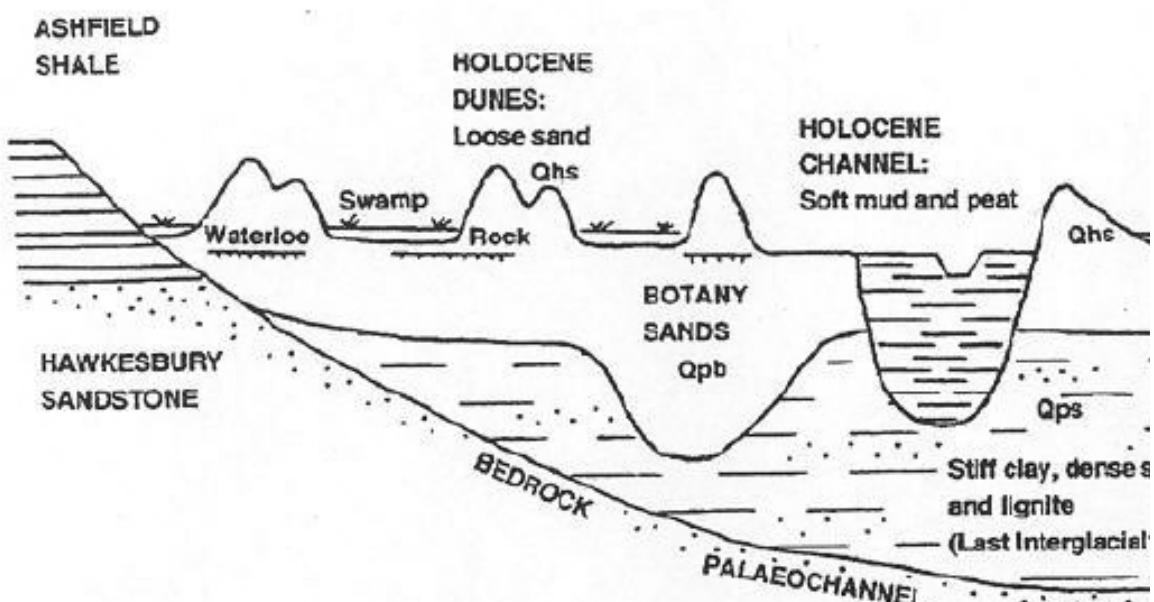


EXISTING CONDITIONS



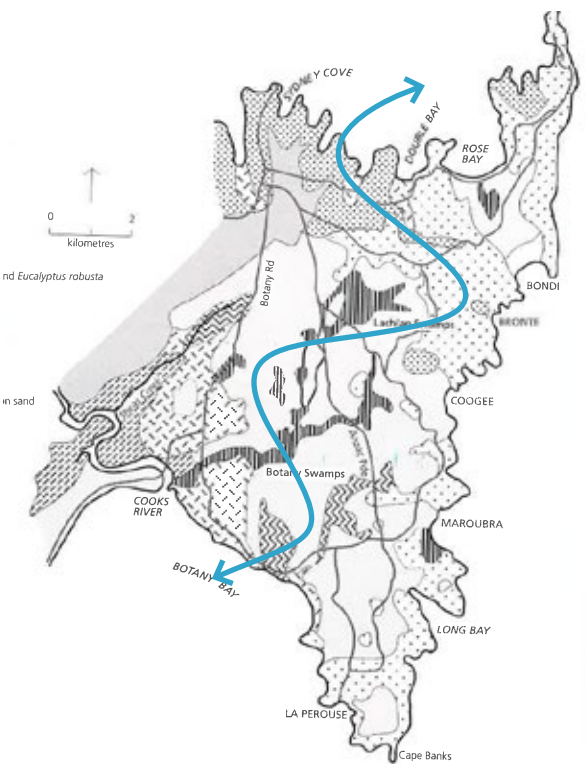
DESIGN APPROACH

1: THE SAND RIDGE



The 100,000-year-old aeolian (wind-blown) dune sand ridges would have dominated the area. This underlying dune system extends from Botany Bay in the south, north towards Sydney Harbour and east towards the Pacific Ocean. The park and green links have been designed to incorporate the natural sand and sandstone landscapes, to reflect this expansive, now largely hidden dune system.

2: MOVEMENT



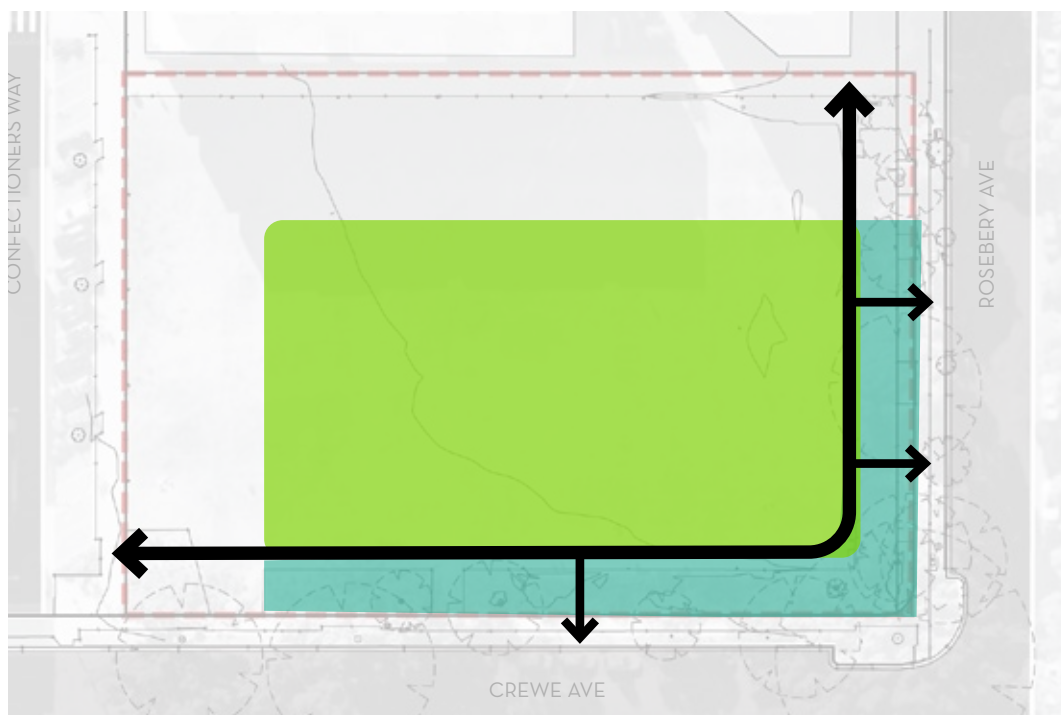
The dune ridge is a place of movement. Darug and Bidjigal communities connected through this place on their way to Sydney Harbour and Botany Bay. Flowering heaths and banksias would have marked changes in seasons and rainfall. The park and link are still spaces where people pass through and meet daily. The design captures the idea of change and movement, in the design structure and in the selection of trees and plants, allowing visitors to read the daily and seasonal variations of this place.

3: NESTING



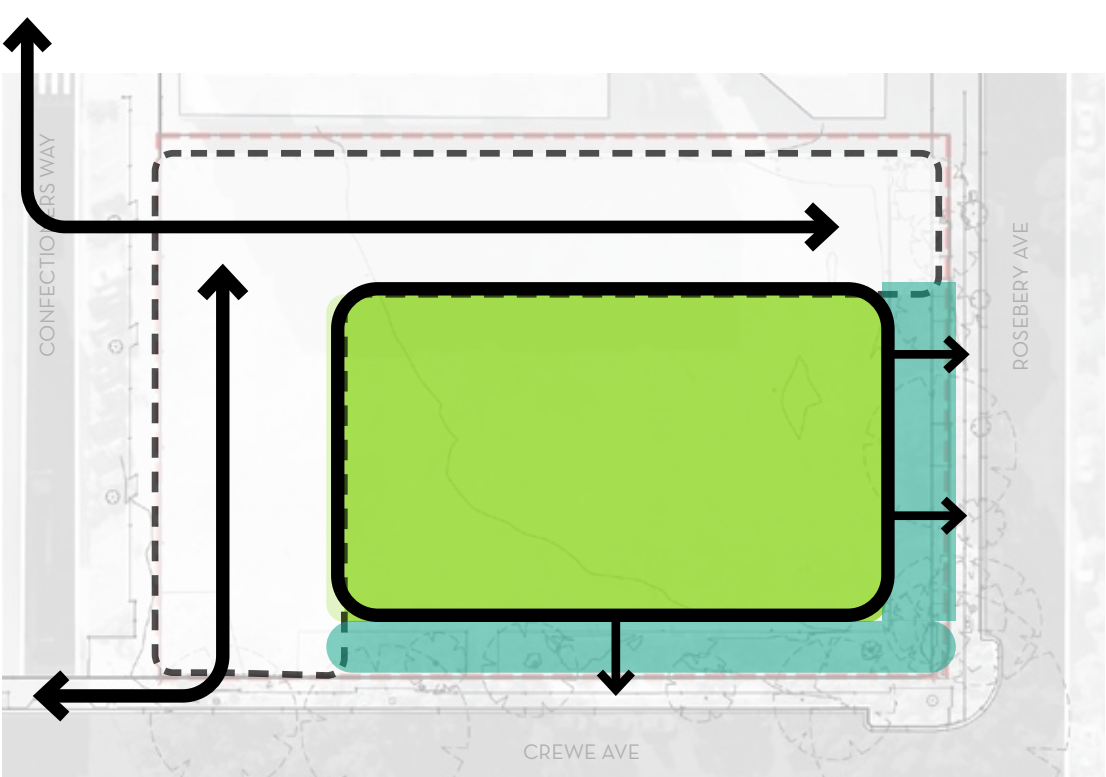
The precinct would have been extensively covered with Eastern Suburbs Banksia Scrub, a diverse plant community occurring on sand dominated by heath or flowering shrubs that would have been a haven for native bird life. This vegetation is an endangered ecological community in NSW has largely disappeared from this area. The design reinterprets the idea of nesting as a place for rest and respite for animals and people. The design creates a series of endemic gardens, with flowering species providing habitat for native birds. The configuration of elevated play structures, nestled in the trees and constructed with timber and rope evoke the idea of bird nests and nets. Clusters of seating within the gardens and under shade trees and provide places for shelter and protection across the park and green link.

PARK STRUCTURE



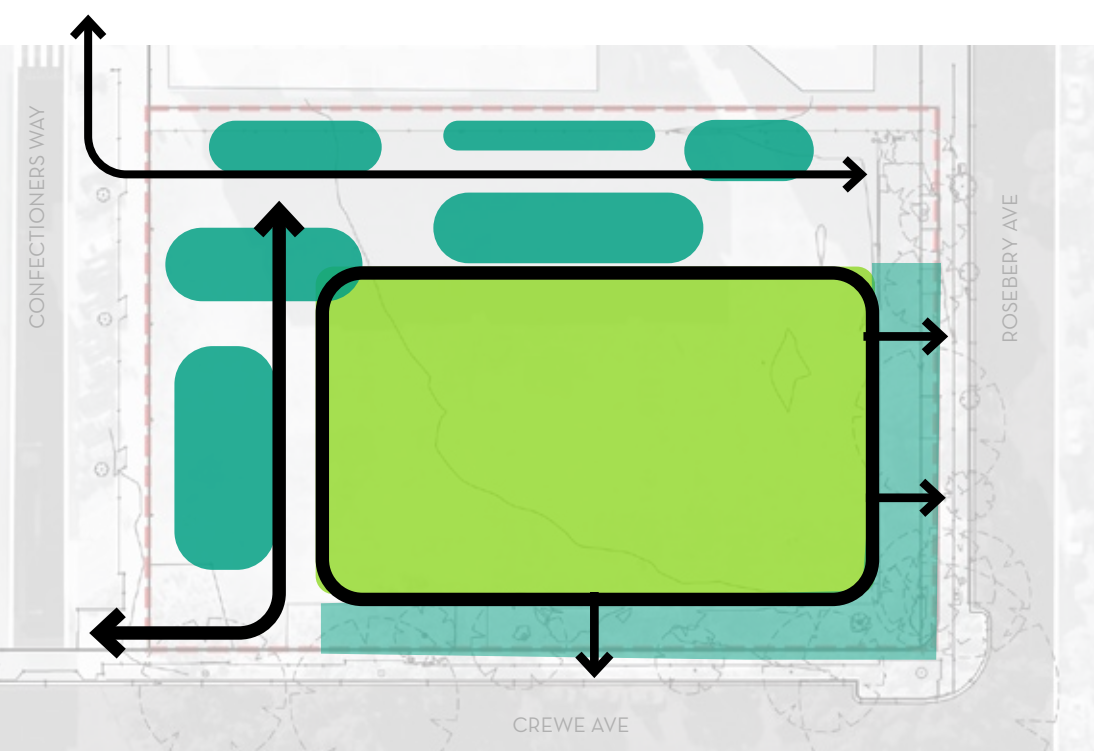
THE LAWN & GARDEN EDGE

- The lawn provides a place of gathering and informal play.
- The street edge garden acts as an interface to the street.
- Creates a comfortable space for outlook.
- Emphasis on habitat plantings.



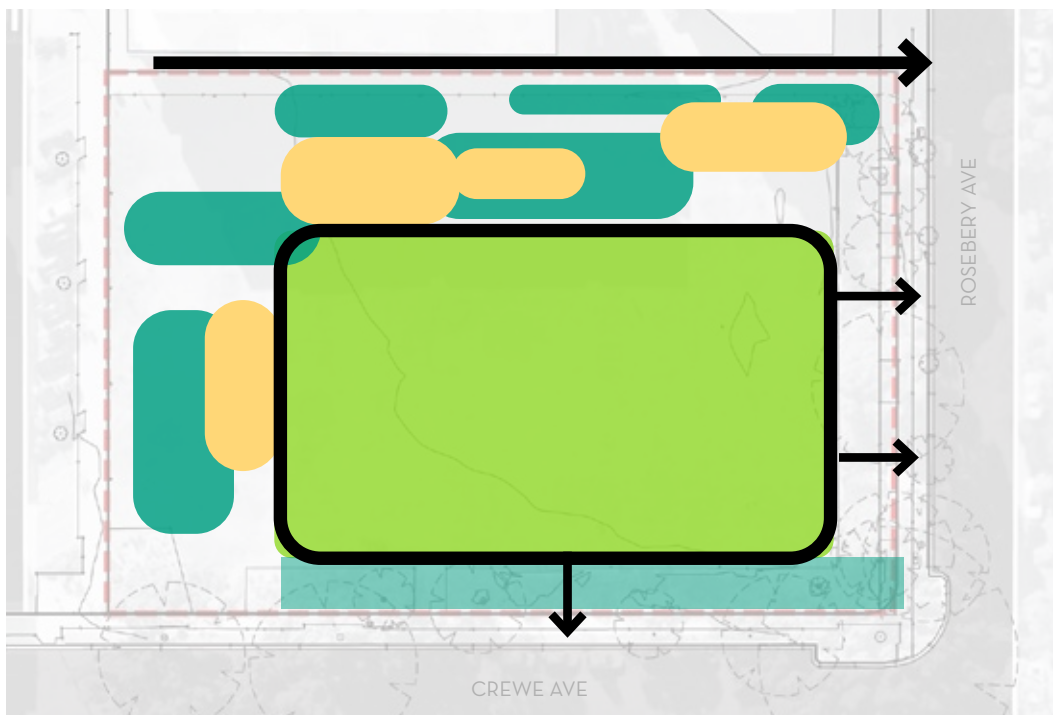
THE RIDGE TERRACE

- Interpretation of the ridge line as a place of movement and rest
- Creates a threshold space between the street, apartments and park.



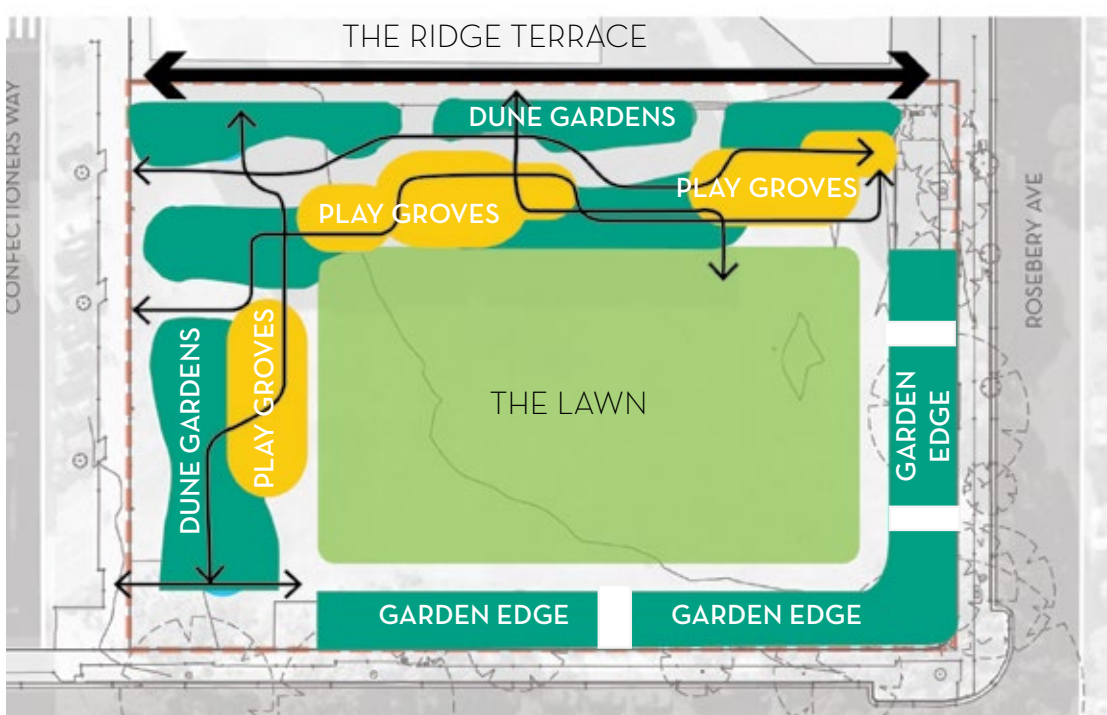
DUNE GARDENS

- Areas of planting dispersed throughout the ridge terrace.
- Incorporating native gardens and sandstone mulch.
- Emphasis of seasonality and texture.



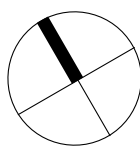
PLAY GROVES

- Pockets of play and seating in concentrated zones, set within planting.
- Offering play elements for children of varying ages.
- Play themes of exploration, climbing, nesting, seasonality.



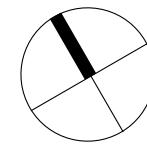
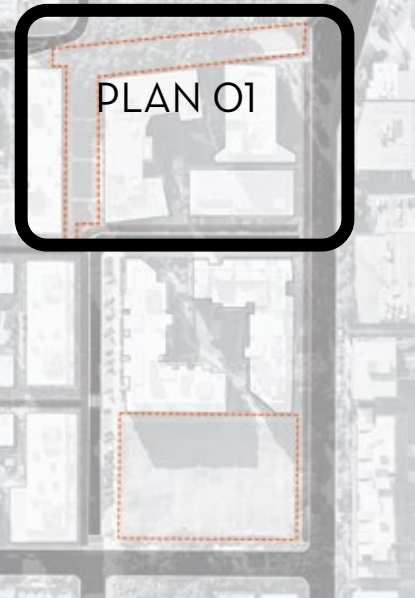
STRUCTURE PLAN

- A combination of open lawn areas and intricate gardens and gathering spaces
- Structured for optimum microclimate benefits include shade to play areas and sun to lawn zones.
- Design speaks to the ecological character and identity of place.

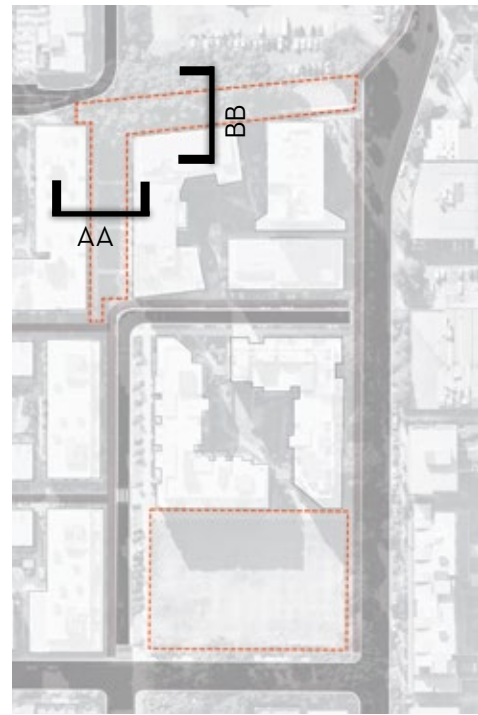




LEGEND	
MATERIALS + FINISHES : PAVING AND TREE PITS	
W1	WALL TYPE 1: PRECAST CONCRETE SEAT WALL 400MM wide, height varies
SP1	PAVING TYPE 1: BRICK PAVING
SP2	PAVING TYPE 2: EXISTING INSITU CONCRETE Footpath as per City of Sydney Public Domain Standard
SP3	PAVING TYPE 3: CRUSHED SANDSTONE
SP4	PAVING TYPE 4: SAND Fall zones to playground surrounds.
SP5	PAVING TYPE 5: AC SURFACING Retain existing slab and resurface with AC.
STE	STEEL EDGE TO GARDEN BED.
TP1	TREE PIT IN PLANTING
TP2	TREE PIT IN CRUSHED SANDSTONE Steel edge surround.
TP3	TREE PIT IN PAVING Custom circular frame
MATERIALS + FINISHES : FURNITURE & FIXTURES	
B1	BENCH TYPE 1 City of Sydney Standard; Tzannes village suite
B2	BENCH TYPE 2: CUSTOM SEAT Precast concrete base with timber battens with backrest
B3	PICNIC TABLE City of Sydney Standard: SFA
LB1	LITTER BIN TYPE 1 City of Sydney Standard;Tzannes village suite
DF1	DRINKING FOUNTAIN City of Sydney Standard Tzannes village suite
HR1	HANDRAIL TYPE 1: FREE STANDING Finish: Powder coated steel
PZ1	PLAY ZONE 1: GUM NESTS Custom timber and steel platforms with proprietary climbing ropes and slide.
PZ2	PLAY ZONE 2: JUNIOR PLAY Sand play with slide, sandstone blocks and steppers
PZ3	PLAY ZONE 3: SWINGS Custom multi-swing with 2 x4m adult swings, 2 x junior swing
PZ5	PLAY ZONE PLATFORMS: CUSTOM ROUND TIMBER Timber batten with steel frame
LP1	EXISTING LIGHTPOLE To be retained and protected.
LP2	PARK LIGHTING: POLE MOUNTED SPOTLIGHTS 2 X IP65 spotlights mounted at 5m to 5,5 m pole: Powder coated white
LP3	PARK LIGHTING: POLE MOUNTED SPOTLIGHTS 3 X IP65 spotlights mounted at 5m to 5,5 m pole: Powder coated white
LP3	PROJECTOR LIGHTING 2 x FLC 200 WE EF Lighting Projector; Pole mounted with custom artwork
C1	CYCLE RACKS: STEEL HOOPS Finish: Powder coated white
MATERIALS + FINISHES: GARDEN BEDS	
GB1	GARDEN BED 1 Mass Planting Type 1: Dune gardens
GB2	GARDEN BED 2 Mass Planting Type 2: Habitat planting under existing trees to street edge
GB3	GARDEN BED 3 Mass planting Type 3: Under existing Ficus trees
GB4	STREET VERGE Mass planting Type 4
TP1	NEW TREE PLANTING 400 ltr.
EXT	EXISTING STREET TREES To be protected and retained.
EXISTING TREES: GREEN LINK	
T1	Hills Weeping Fig (<i>Ficus macrocarpa</i> 'Hillii') to be retained
T2	Hills Weeping Fig (<i>Ficus macrocarpa</i> 'Hillii') to be retained
T3	Hills Weeping Fig (<i>Ficus macrocarpa</i> 'Hillii') to be retained
T4	Hills Weeping Fig (<i>Ficus macrocarpa</i> 'Hillii') to be retained
T5	Hills Weeping Fig (<i>Ficus macrocarpa</i> 'Hillii') to be retained
T6	Hills Weeping Fig (<i>Ficus macrocarpa</i> 'Hillii') to be retained
T7	Hills Weeping Fig (<i>Ficus macrocarpa</i> 'Hillii') to be retained
T8	Hills Weeping Fig (<i>Ficus macrocarpa</i> 'Hillii') to be retained
T9	Brush Box (<i>Lophostemon confertus</i>) to be retained
T10	Jacaranda (<i>Jacaranda mimiasifolia</i>) to be retained
	Site Boundary
	Tree Protection Zone
	Structural Root Zone



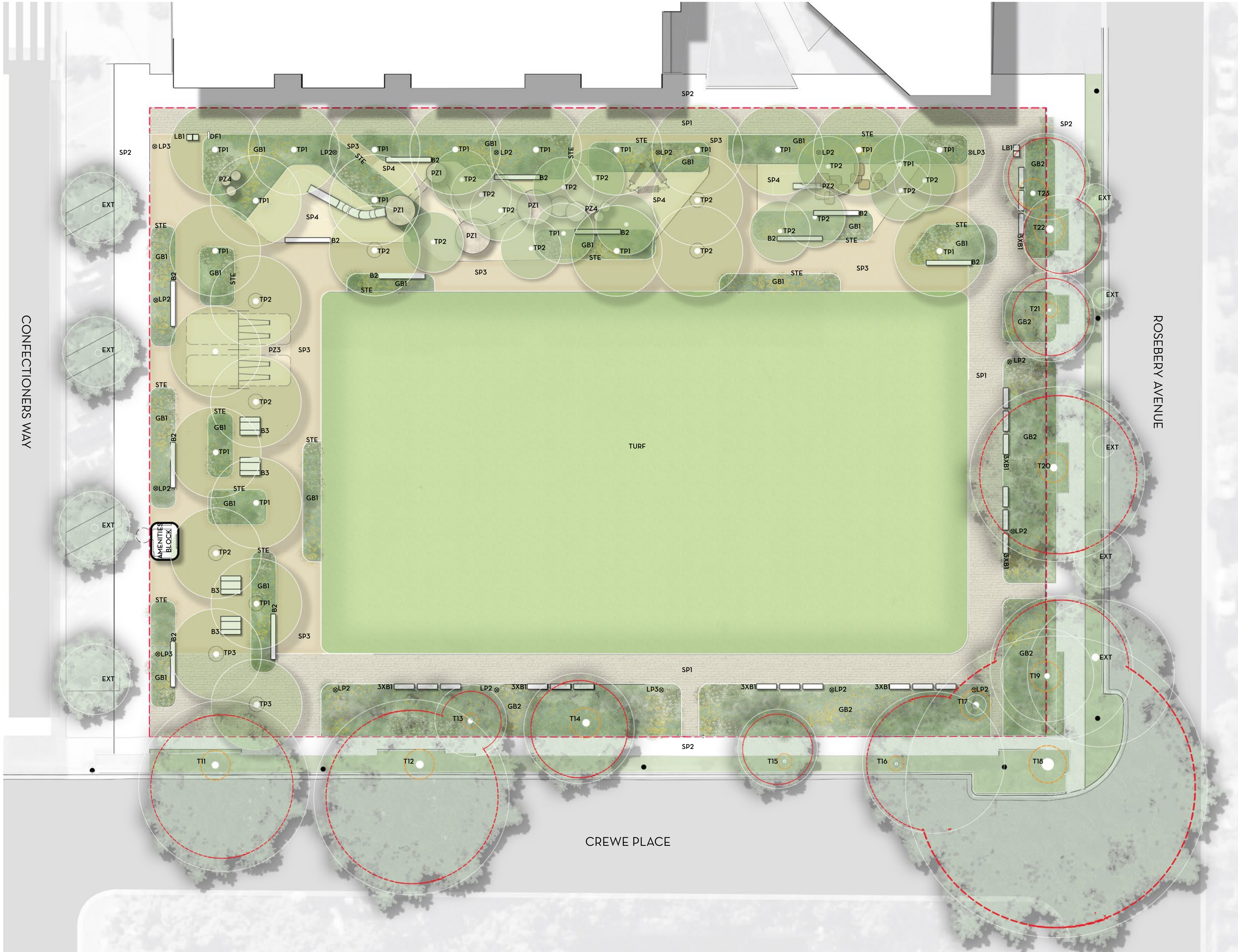
KEY PLAN



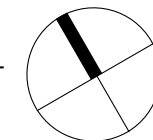
SECTION AA: GREEN LINK NORTH - SOUTH



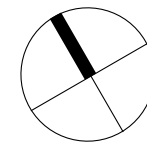
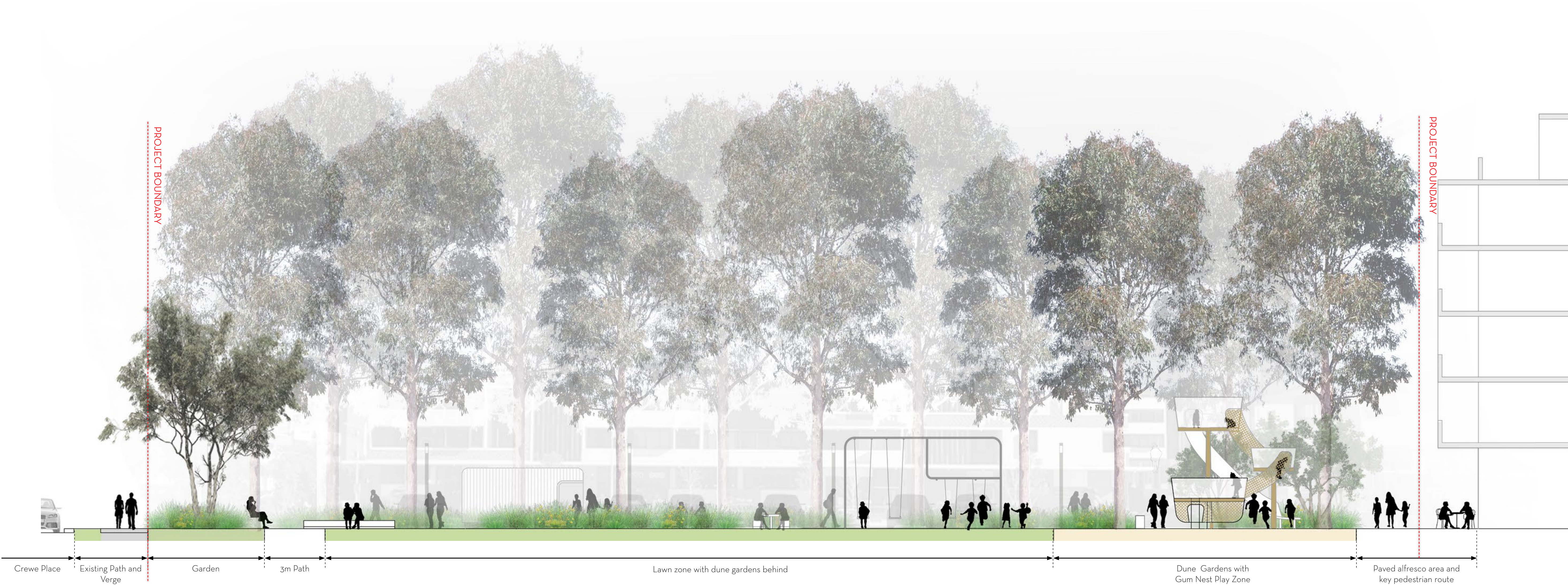
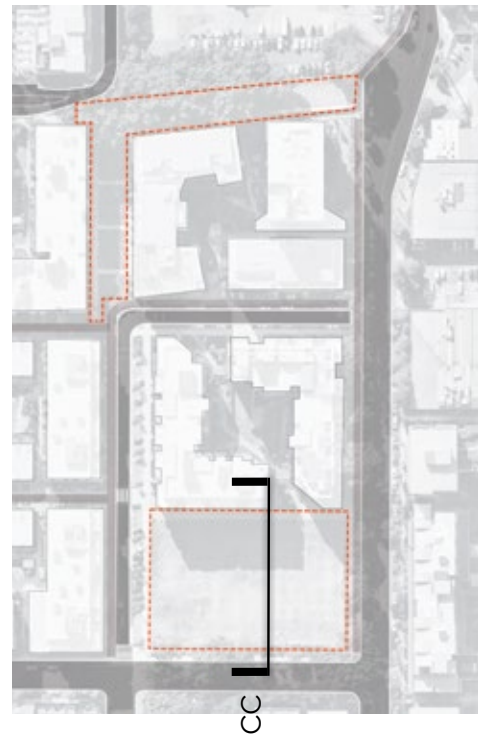
SECTION BB: GREEN LINK EAST WEST



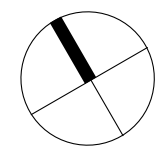
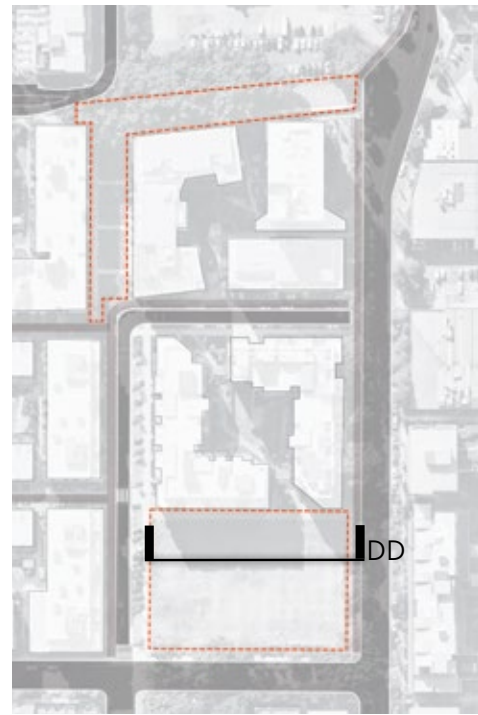
LEGEND	
MATERIALS + FINISHES : PAVING AND TREE PITS	
W1	WALL TYPE 1: PRECAST CONCRETE SEAT WALL 400MM wide, height varies
SP1	PAVING TYPE 1: BRICK PAVING
SP2	PAVING TYPE 2: EXISTING INSITU CONCRETE Footpath as per City of Sydney Public Domain Standard
SP3	PAVING TYPE 3: CRUSHED SANDSTONE
SP4	PAVING TYPE 4: SAND Fall zones to playground surrounds.
SP5	PAVING TYPE 5: AC SURFACING Retain existing slab and resurface with AC.
STE	STEEL EDGE TO GARDEN BED.
TP1	TREE PIT IN PLANTING
TP2	TREE PIT IN CRUSHED SANDSTONE Steel edge surround.
TP3	TREE PIT IN PAVING Custom circular frame
MATERIALS + FINISHES : FURNITURE & FIXTURES	
B1	BENCH TYPE 1 City of Sydney Standard: Tzannes village suite
B2	BENCH TYPE 2: CUSTOM SEAT Precast concrete base with timber battens with backrest
B3	PICNIC TABLE City of Sydney Standard: SFA
LB1	LITTER BIN TYPE 1 City of Sydney Standard: Tzannes village suite
DF1	DRINKING FOUNTAIN City of Sydney Standard: Tzannes village suite
HR1	HANDRAIL TYPE 1: FREE STANDING Finish: Powder coated steel
PZ1	PLAY ZONE 1: GUM NESTS Custom timber and steel platforms with proprietary climbing ropes and slide.
PZ2	PLAY ZONE 2: JUNIOR PLAY Sand play with slide, sandstone blocks and steppers
PZ3	PLAY ZONE 3: SWINGS Custom multi-swing with 2 x4m adult swings, 2 x junior swing
PZ4	PLAY ZONE PLATFORMS: CUSTOM ROUND TIMBER Timber batten with steel frame
LP1	EXISTING LIGHTPOLE To be retained and protected.
LP2	PARK LIGHTING: POLE MOUNTED SPOTLIGHTS 2 X IP65 spotlights mounted at 5m to 5.5 m pole: Powder coated white
LP3	PARK LIGHTING: POLE MOUNTED SPOTLIGHTS 3 X IP65 spotlights mounted at 5m to 5.5 m pole: Powder coated white
LP3	PROJECTOR LIGHTING 2 x FLC 200 WE EF Lighting Projector; Pole mounted with custom artwork
C1	CYCLE RACKS: STEEL HOOPS Finish: Powder coated white
MATERIALS + FINISHES: GARDEN BEDS	
GB1	GARDEN BED 1 Mass Planting Type 1: Dune gardens
GB2	GARDEN BED 2 Mass Planting Type 2: Habitat planting under existing trees to street edge
GB3	GARDEN BED 3 Mass planting Type 3: Under existing Ficus trees
GB4	STREET VERGE Mass planting Type 4
TP1	NEW TREE PLANTING 400 ltr.
EXT	EXISTING STREET TREES To be protected and retained.
EXISTING TREES: PARK	
T11	Hills Weeping Fig (<i>Ficus macrocarpa</i> 'Hilli') to be retained
T12	Hills Weeping Fig (<i>Ficus macrocarpa</i> 'Hilli') to be retained
T13	Broad Leaf Paperbark (<i>Melaleuca quinquenervia</i>) to be retained
T14	Broad Leaf Paperbark (<i>Melaleuca quinquenervia</i>) to be retained
T15	Brush Box (<i>Lophostemon confertus</i>) to be retained
T16	Tuckeroo (<i>Cupaniopsis anacardioides</i>) to be retained
T17	Canary Island date palm (<i>Phoenix canariensis</i>) to be retained
T18	Hills Weeping Fig (<i>Ficus macrocarpa</i> 'Hilli') to be retained
T19	Smooth Barked Apple (<i>Angophora constata</i>) to be retained
T20	Lemons Scented Gum (<i>Corymbia citriodora</i>) to be retained
T21	Brush Box (<i>Lophostemon confertus</i>) to be retained
T22	Banksia (<i>Banksia</i> sp.) to be retained
T23	Brush Box (<i>Lophostemon confertus</i>) to be retained
Site Boundary	
Tree Protection Zone	
Structural Root Zone	



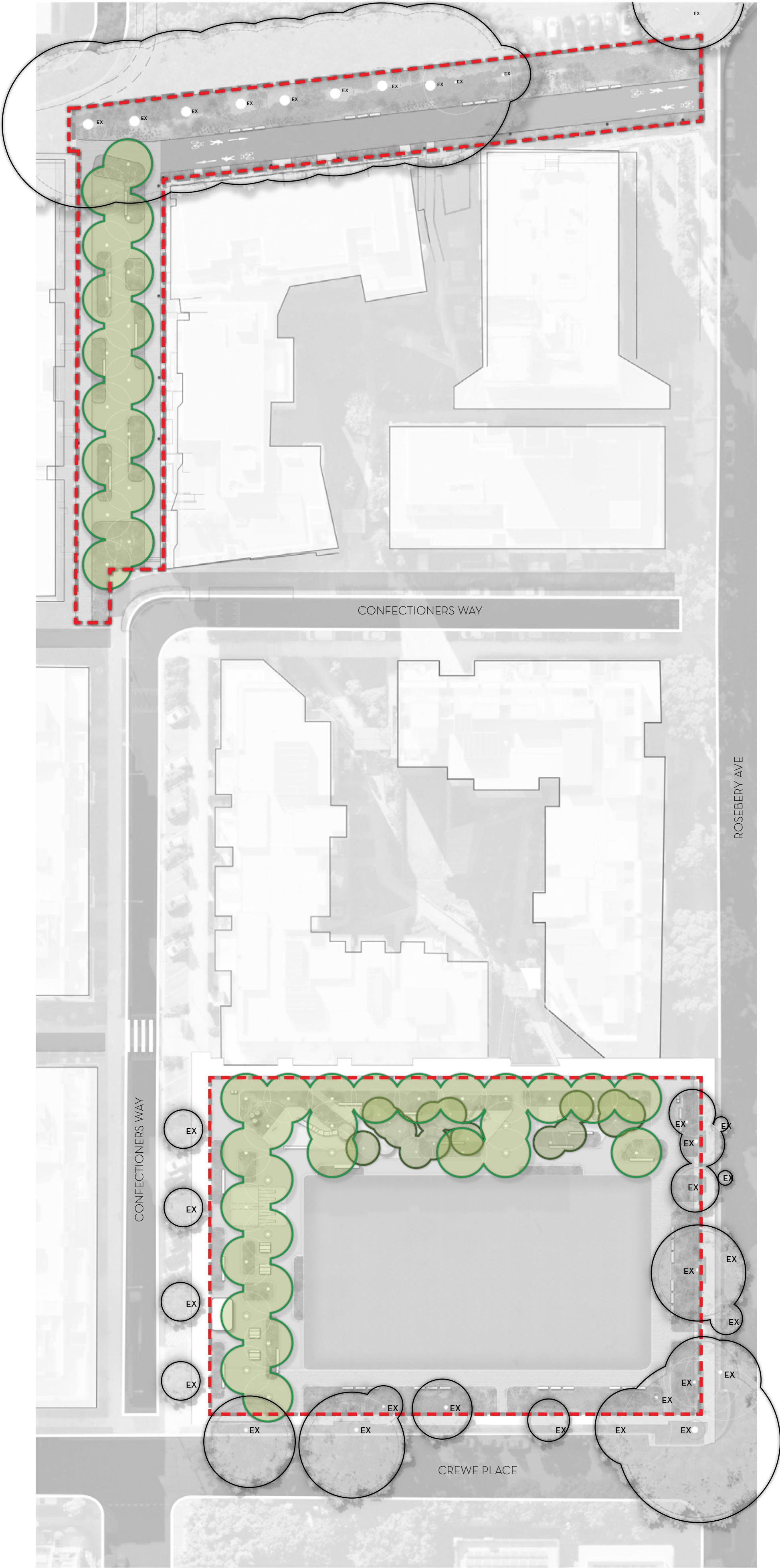
KEY PLAN



KEY PLAN



TREES



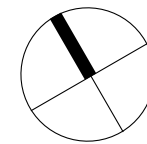
UNDERSTOREY PLANTING



PLANTING SCHEDULE

PLANT SCHEDULE						
Code	Species	Common Name	Origin	Mature Height	Mature Spread	Location
TREES						
AC	<i>Angophora costata</i>	Smooth-barked Apple	Native	20m	15m	As per plan
BA	<i>Banksia aemula</i>	Wallum Banksia	Endemic	8m	2.5m	As per plan
BS	<i>Banksia serrata</i>	Old Man Banksia	Endemic	10m	3m	As per plan
BL	<i>Banksia integrifolia</i>	Coast Banksia	Endemic	6m	4m	As per plan
CG	<i>Corymbia gummifera</i>	Red bloodwood	Native	20m	15m	As per plan
EM	<i>Eucalyptus microcorys</i>	Tallowood	Native	30m	15m	As per plan
TURF						
TURF	<i>Stenotaphrum Secundatum</i>	Sir Walter Buffalo				As per plan
GROUND COVERS						
Am	<i>Actinotus minor</i>	Lesser Flannel Flower	Endemic	400mm	400mm	A
Ah	<i>Actinotus helianthi</i>	Flannel Flower	Endemic	400mm	400mm	A
Bs	<i>Billardiera scandens</i>	Apple Berry	Endemic	500mm	2000mm	A
Bp	<i>Boronia parviflora</i>	Swamp Boronia	Endemic	300mm	300mm	A
Cg	<i>Carpobrotus glaucescens</i>	Dig face	Native	400mm	500mm	A, B
Cc	<i>Conostylis candidans</i>	Cotton Heads	Native	300mm	500mm	A, B
Dt	<i>Darwinia laxifolia</i>	prostrate form	Endemic	300mm	1000mm	A
Hs	<i>Hibbertia scandens</i>	Guinea Flower	Native	300mm	1200mm	A, B
Hv	<i>Hardenbergia violacea</i>	Happy Wanderer	Endemic	500mm	1200mm	A, B
Kr	<i>Kennedia rubicunda</i>	Dusky Coral Pea	Native	400mm	2000mm	A, B
STRAPPY LEAF/GRASSES						
Dc	<i>Dichelachne crinita</i>	Long hair plume grass	Endemic	800mm	600mm	A
Dr	<i>Dianella caerulea</i>	Flax Lily	Native	800mm	1200mm	A, B
Dr	<i>Dianella revoluta</i>	Blue Flax Lily	Endemic	500mm	500mm	A
En	<i>Ficinia nodosa</i>	Knotted Club Bush	Native	600mm	600mm	C
Lt	<i>Lomandra 'banika'</i>	Matt Rush Cultivar	Native	500mm	600mm	A, C
Ll	<i>Lepidosperma laterale</i>	variable sword sedge	Endemic			C
Rf	<i>Restio tetraphyllus</i>	Tassel Rush	Native	1000mm	500mm	C
SHRUBS						
Ac	<i>Acacia cognata 'Limelight'</i>	Dwarf River Wattle	Native	1500mm	2000mm	B
Ah	<i>Actinotus helianthi</i>	Flannel Flower	Endemic	700mm	500mm	A, B
An	<i>Atriplex nummularia</i>	Old Man Saltbush	Endemic	1500mm	750mm	A, B
Bm	<i>Banksia marginata</i>	Silver Banksia	Endemic	1200mm	1200mm	A
Br	<i>Bauera rubioides</i>	Native Bauera	Endemic	1000mm	1000mm	A
Bo	<i>Breyeria oblongifolia</i>	Coffee Bush	Endemic	2000mm	1000mm	A
Ct	<i>Conospermum taxifolium</i>	Variable Smoke Bush	Endemic	800mm	300mm	A
Ca	<i>Correa alba</i>	White Correa	Endemic	1500mm	1500mm	A, B
Ea	<i>Ericostemon australasius</i>	Pink wax flower	Endemic	600-2000mm	1000mm	A
Gp	<i>Grevillea parvula x juniperina prostrate</i>	Grevillea 'Tucker Time Winter Feast'	Native	500-1000mm	1500mm	B
Wf	<i>Westringia fruticosa</i>	Coastal Rosemary	Native	1500mm	1500mm	D
Xr	<i>Xanthorrhoea resinifera</i>	Grass Tree	Native	2m	1500mm	A
GREEN LINK PLANTING: UNDER FIG						
Aa	<i>Asplenium australasicum</i>	Birds Nest Fern	Native	0.5-1.5m	0.5-1.5m	D
Ac	<i>Arthropodium cirratum</i>	Renga Renga Lily	Exotic	1m	1000mm	D
Aj	<i>Ayuga 'Callins Giant'</i>	Giant Bugle	Exotic	200mm	500mm	D
Bs	<i>Blechnum gibbum</i>	Silver Lady Fern	Exotic	1.2m	1000mm	D
Md	<i>Microsorium diversifolium</i>	Kangaroo Paw Fern	Native	300mm	600mm	D
Px	<i>Phlodendron xanadu</i>	Xanadu Philodendron	Exotic	1500mm	1500mm	D
Ss	<i>Spathiphyllum 'Sensation'</i>	Peace Lily	Exotic	1000mm	1000mm	D
Sw	<i>Spathiphyllum wallisii</i>	Petite Peace Lily	Exotic	300mm	300mm	D
Vh	<i>Viola hederacea</i>	Native violet	Native	200mm	600mm	D

- KEY
- EXTENT OF WORKS
 - ZONE A - DUNE GARDEN - 6 PLANTS PER 1M2
 - ZONE B - GARDEN EDGE - 6 PLANTS PER 1M2
 - ZONE C - RAIN GARDEN - 6 PLANTS PER 1M2
 - ZONE D - GREEN LINK SHADE PLANTING - 6 PLANTS PER 1M2
 - ZONE E - TURF
 - TREE TYPE 1 - GUM SP. 400L POTS
 - TREE TYPE 2 - BANKSIA SP. 200L POTS
 - EX EXISTING TREE



KEY PLAN

