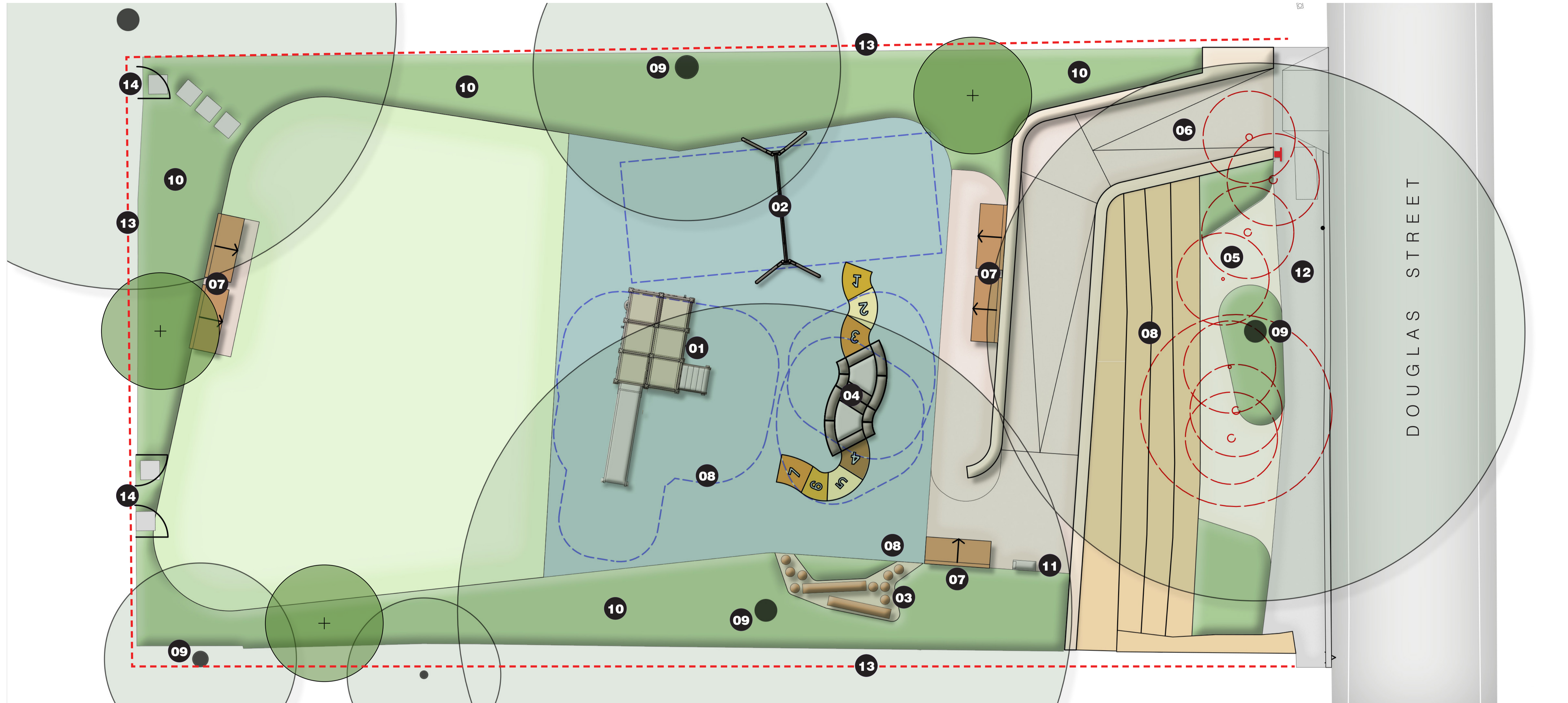


Proposed Works



- 01** Play structure with slide and play shop front suitable for children aged 1-10
- 02** Double swing set with strap and bucket seat suitable for children aged 1-10
- 03** New nature play area
- 04** In-ground trampoline with hopscotch
- 05** Create a more open park entry to improve connections and safety
- 06** Improved ramped entry into park

- 07** New bench seat
- 08** Retain existing sandstone steps
- 09** Retain existing trees
- 10** New planting to garden beds
- 11** New water bubbler
- 12** New footpath
- 13** Existing fencing
- 14** Maintain access to adjacent property

- Site boundary
- Existing tree - retain
- Existing tree - remove to create a more open park entry
- + New tree
- Grass area
- New planting
- Soft-fall
- Hardstand
- + Park sign

