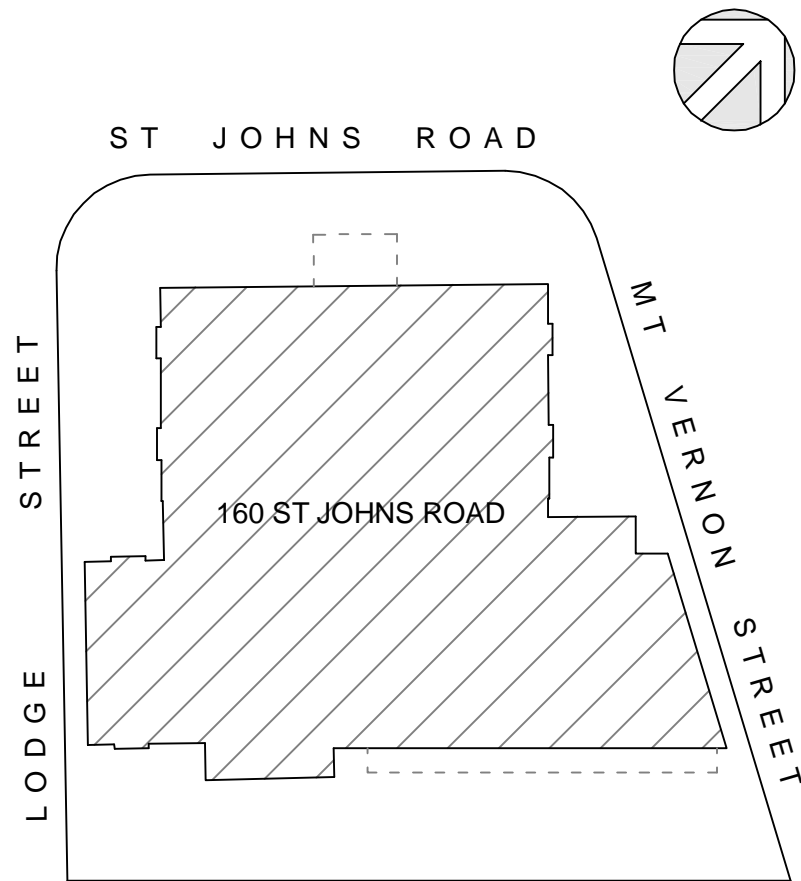


**SUMMARY OF AREAS FOR 160 ST JOHNS ROAD, GLEBE, NSW**



SUMMARY OF AREAS				
LEVEL		LAP AREAS	OTHER AREAS	TOTAL AREAS
BASEMENT	(SHEET 2)	80.8m <sup>2</sup>	89.0m <sup>2</sup>	169.8m <sup>2</sup>
GROUND	(SHEET 3)	310.4m <sup>2</sup>	261.4m <sup>2</sup>	571.8m <sup>2</sup>
LEVEL 1	(SHEET 4)	388.9m <sup>2</sup>	143.1m <sup>2</sup>	532.0m <sup>2</sup>
<b>TOTAL AREA</b>		<b>780.1 m<sup>2</sup></b>	<b>493.5 m<sup>2</sup></b>	<b>1,273.6 m<sup>2</sup></b>

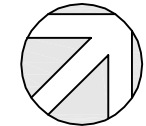
PLAN PREPARED FOR:  
**BROOKFIELD JOHNSON  
CONTROLS**

**SUMMARY OF AREAS  
160 ST JOHNS ROAD  
GLEBE, NSW**

DATE: 01/10/2013	
REF: 44845	REV: -
DRAWN: JW	CHECKED: CB
SCALE: NTS @ A3	SHEET: 1 of 4

sydney canberra melbourne brisbane adelaide perth  
**REALSERVE**  
Real Estate Plans & Surveys [www.realserve.com.au](http://www.realserve.com.au)  
P 02 9629 9377  
F 02 9475 5050

# LETTABLE AREA PLAN FOR BASEMENT, 160 ST JOHNS ROAD, GLEBE, NSW



## SCHEDULE OF AREAS

CLASSROOM	36.1 m <sup>2</sup>
STORE 1	6.6 m <sup>2</sup>
STORE 2	25.3 m <sup>2</sup>
STORE 3	2.6 m <sup>2</sup>
STORE 4	10.2 m <sup>2</sup>

**TOTAL AREA** 80.8 m<sup>2</sup>

LETTABLE AREA



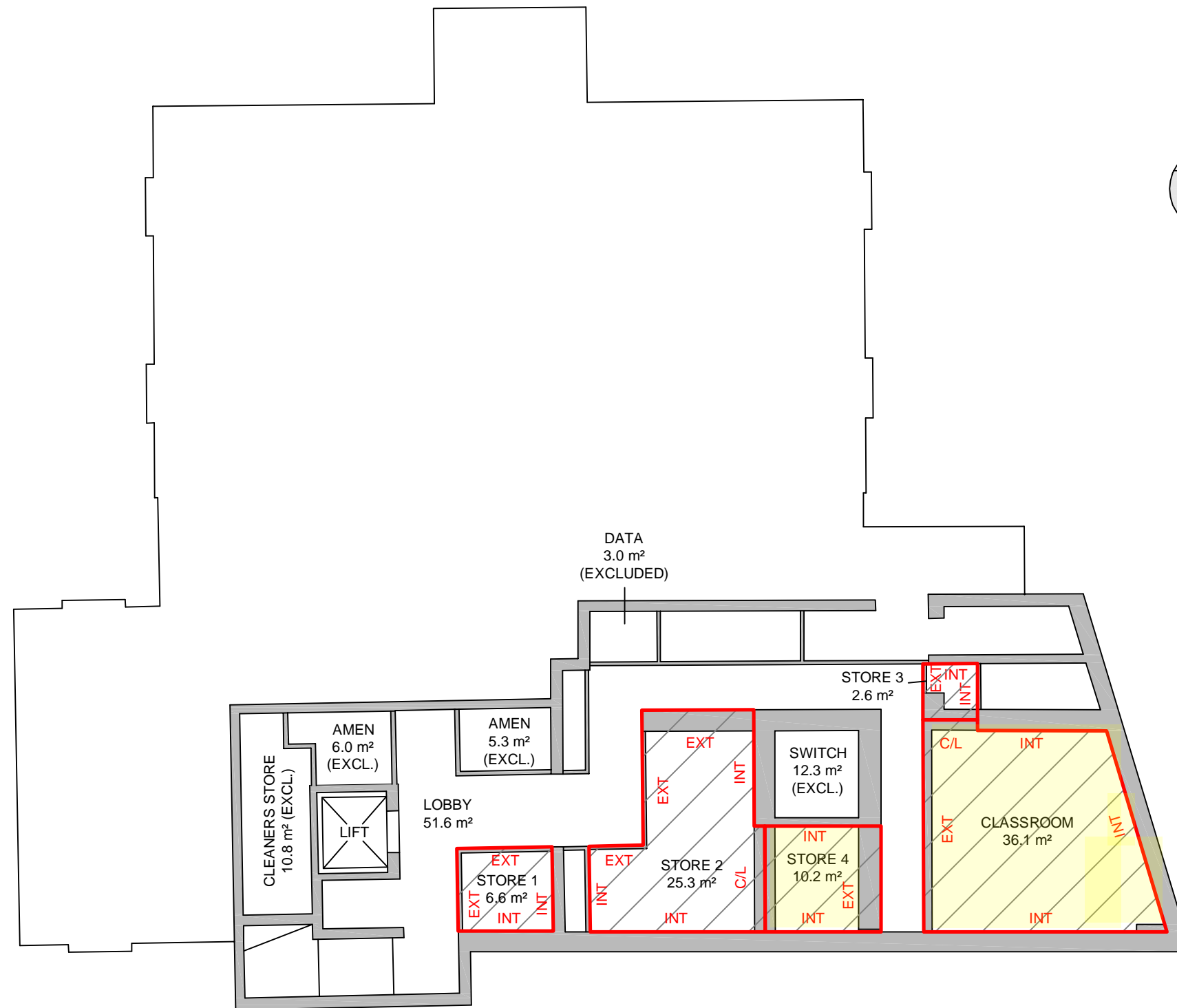
## METHOD OF MEASUREMENT

AREAS HAVE BEEN CALCULATED IN ACCORDANCE WITH THE PROPERTY COUNCIL OF AUSTRALIA (PCA) METHOD OF MEASUREMENT FOR LETTABLE AREA (MARCH 1997)

(SURVEY DATE 01/10/2013)

## GUIDELINES USED

NET LETTABLE AREA



INT - INTERNAL FACE  
EXT - EXTERNAL FACE  
C/L - CENTRELINE WALL



SCALE 1 : 150


PLAN PREPARED FOR:  
**BROOKFIELD JOHNSON CONTROLS**

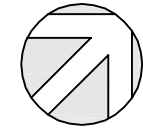
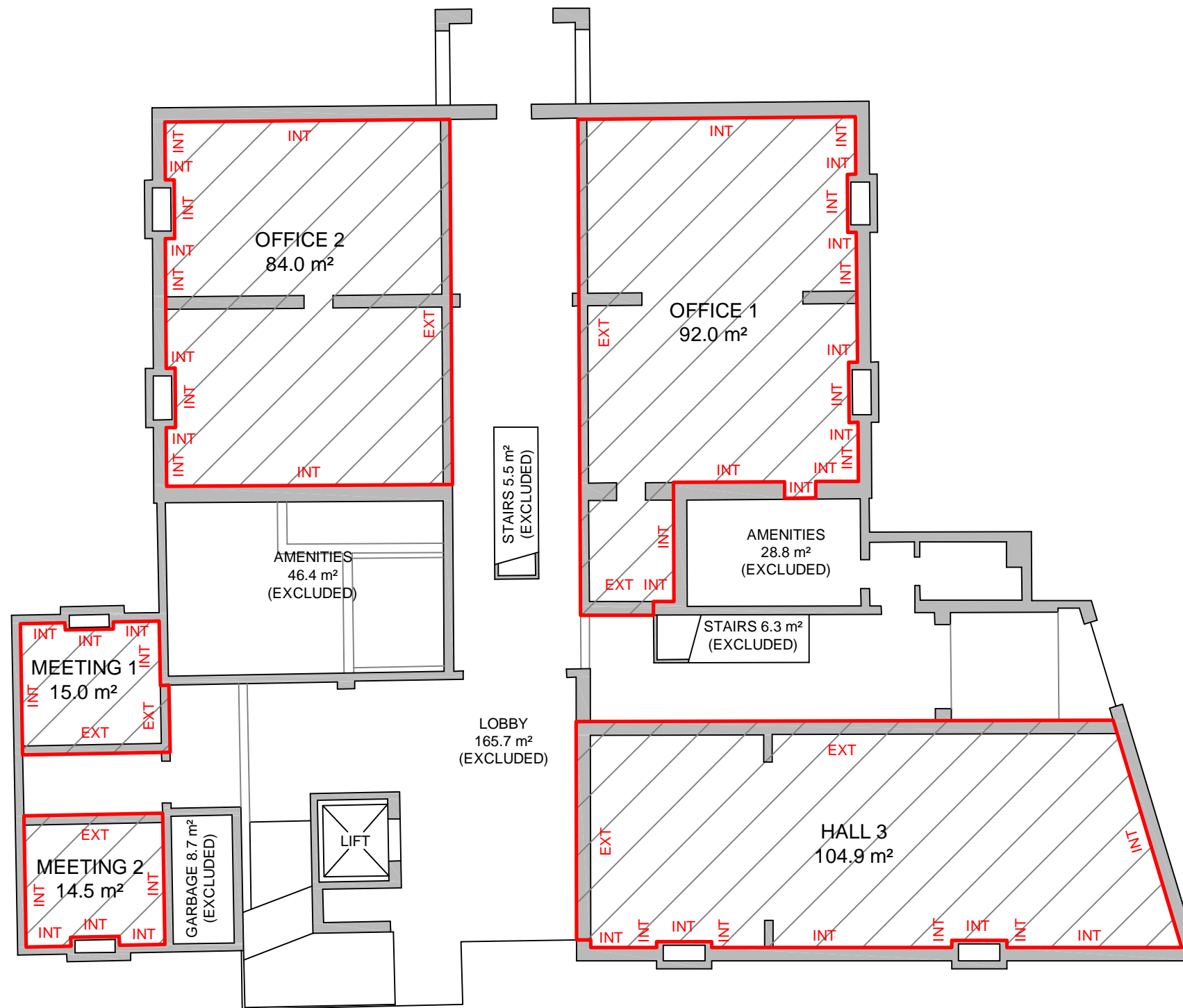
**LETTABLE AREA PLAN**  
**BASEMENT, 160 ST JOHNS ROAD**  
**GLEBE, NSW**

DATE: 01/10/2013	REV: -
REF: 44845	CHECKED: CB
DRAWN: JW	SHEET: 2 of 4
SCALE: 1:150 @ A3	

sydney canberra melbourne brisbane adelaide perth  
**REALSERVE**  
Real Estate Plans & Surveys  
P 02 9629 9377  
F 02 9475 5050  
www.realserve.com.au

# LETTABLE AREA PLAN FOR GROUND, 160 ST JOHNS ROAD, GLEBE, NSW

SCHEDULE OF AREAS	
OFFICE 1	92.0 m <sup>2</sup>
OFFICE 2	84.0 m <sup>2</sup>
MEETING 1	15.0 m <sup>2</sup>
MEETING 2	14.5 m <sup>2</sup>
HALL 3	104.9 m <sup>2</sup>
<b>TOTAL AREA</b>	<b>310.4 m<sup>2</sup></b>
LETTABLE AREA	
METHOD OF MEASUREMENT	
AREAS HAVE BEEN CALCULATED IN ACCORDANCE WITH THE PROPERTY COUNCIL OF AUSTRALIA (PCA) METHOD OF MEASUREMENT FOR LETTABLE AREA (MARCH 1997)	
(SURVEY DATE 01/10/2013)	
GUIDELINES USED	
NET LETTABLE AREA	



INT - INTERNAL FACE  
 EXT - EXTERNAL FACE  
 C/L - CENTRELINE WALL



SCALE 1 : 150

PLAN PREPARED FOR:  
**BROOKFIELD JOHNSON  
 CONTROLS**

**LETTABLE AREA PLAN  
 GROUND, 160 ST JOHNS ROAD  
 GLEBE, NSW**

DATE: 01/10/2013	
REF: 44845	REV: -
DRAWN: JW	CHECKED: CB
SCALE: 1:150 @ A3	SHEET: 3 of 4

sdney canberra melbourne brisbane adelaide perth  
**REALSERVE**  
 Real Estate Plans & Surveys  
 P 02 9629 9377  
 F 02 9475 5050  
[www.realserve.com.au](http://www.realserve.com.au)

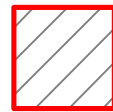
# LETTABLE AREA PLAN FOR LEVEL 1, 160 ST JOHNS ROAD, GLEBE, NSW

## SCHEDULE OF AREAS

HALL 1	210.1 m <sup>2</sup>
HALL 2	98.0 m <sup>2</sup>
STORE	24.4 m <sup>2</sup>
KITCHEN	27.0 m <sup>2</sup>
OFFICE 1	15.0 m <sup>2</sup>
OFFICE 2	14.4 m <sup>2</sup>

**TOTAL AREA** **388.9 m<sup>2</sup>**

LETTABLE AREA



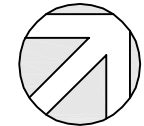
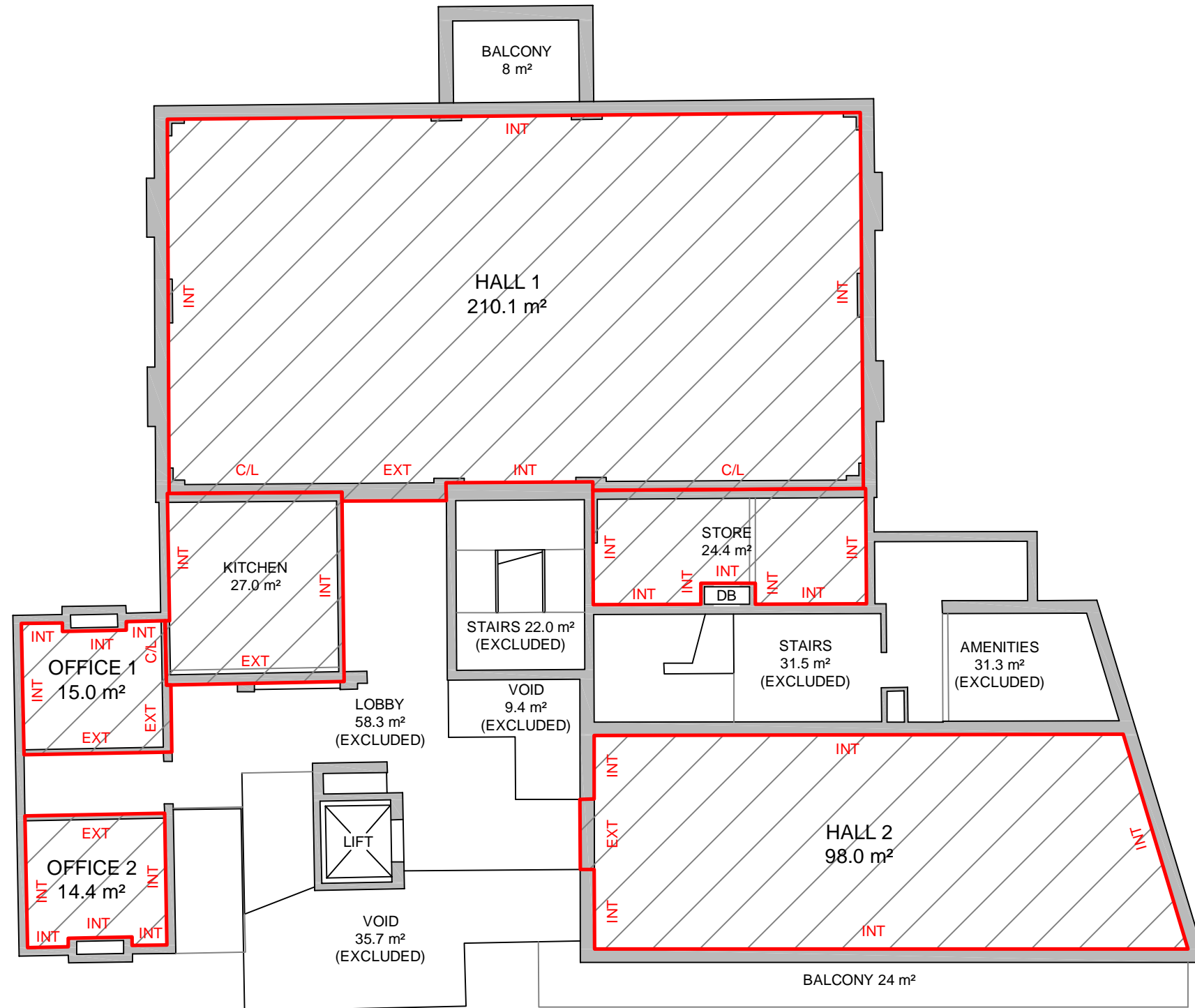
## METHOD OF MEASUREMENT

AREAS HAVE BEEN CALCULATED IN ACCORDANCE WITH THE PROPERTY COUNCIL OF AUSTRALIA (PCA) METHOD OF MEASUREMENT FOR LETTABLE AREA (MARCH 1997)

(SURVEY DATE 01/10/2013)

## GUIDELINES USED

NET LETTABLE AREA



INT - INTERNAL FACE  
EXT - EXTERNAL FACE  
C/L - CENTRELINE WALL  
G/L - GLASS LINE



SCALE 1 : 150

PLAN PREPARED FOR:

**BROOKFIELD JOHNSON  
CONTROLS**

**LETTABLE AREA PLAN  
LEVEL 1, 160 ST JOHNS ROAD  
GLEBE, NSW**

DATE: 01/10/2013

REF: 44845

REV: -

DRAWN: JW

CHECKED: CB

SCALE: 1:150 @ A3

SHEET: 4 of 4

sdney canberra melbourne brisbane adelaide perth

**REALSERVE**

Real Estate Plans & Surveys

P 02 9629 9377  
F 02 9475 5050

[www.realserve.com.au](http://www.realserve.com.au)