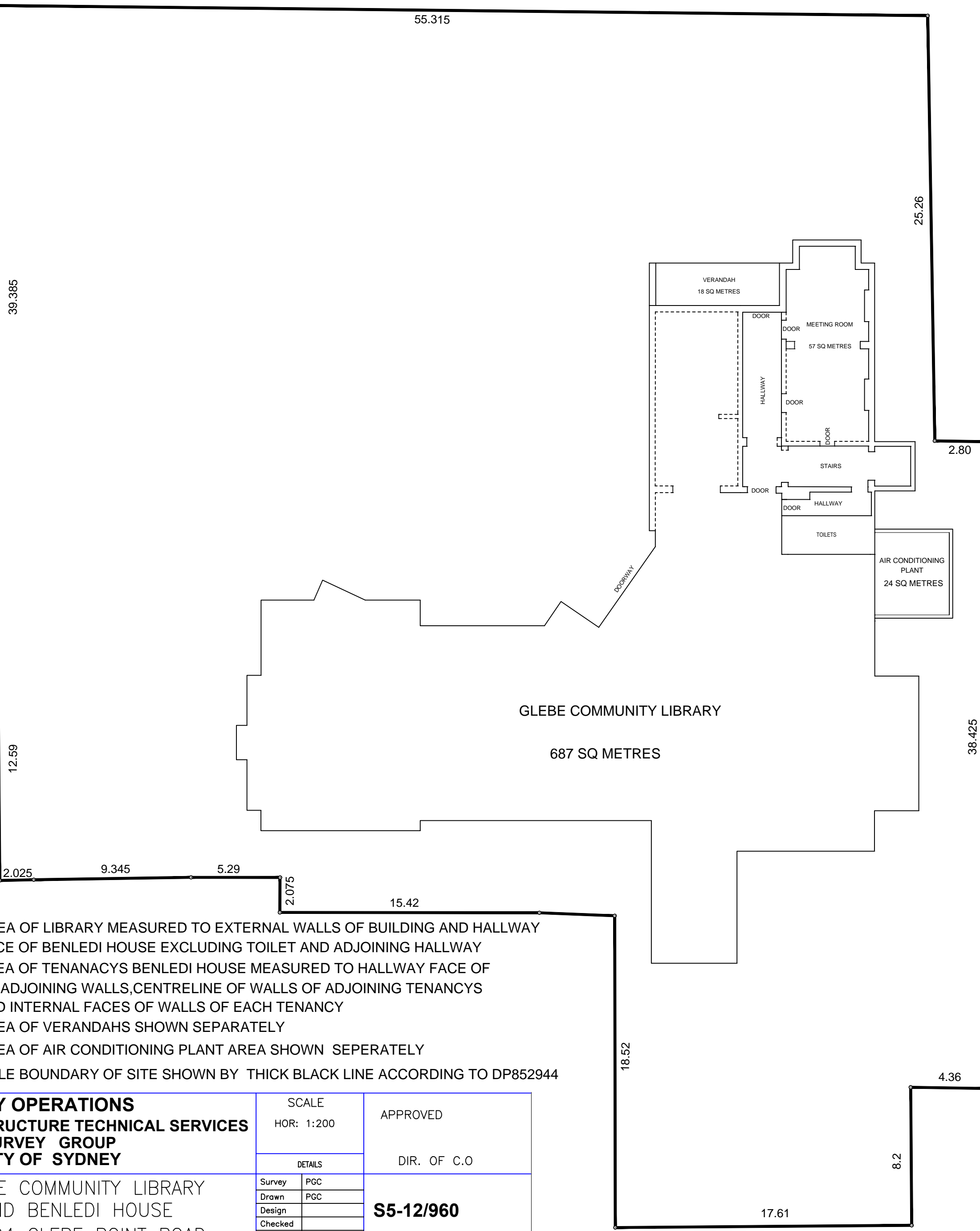


GLEBE POINT ROAD

(A2)

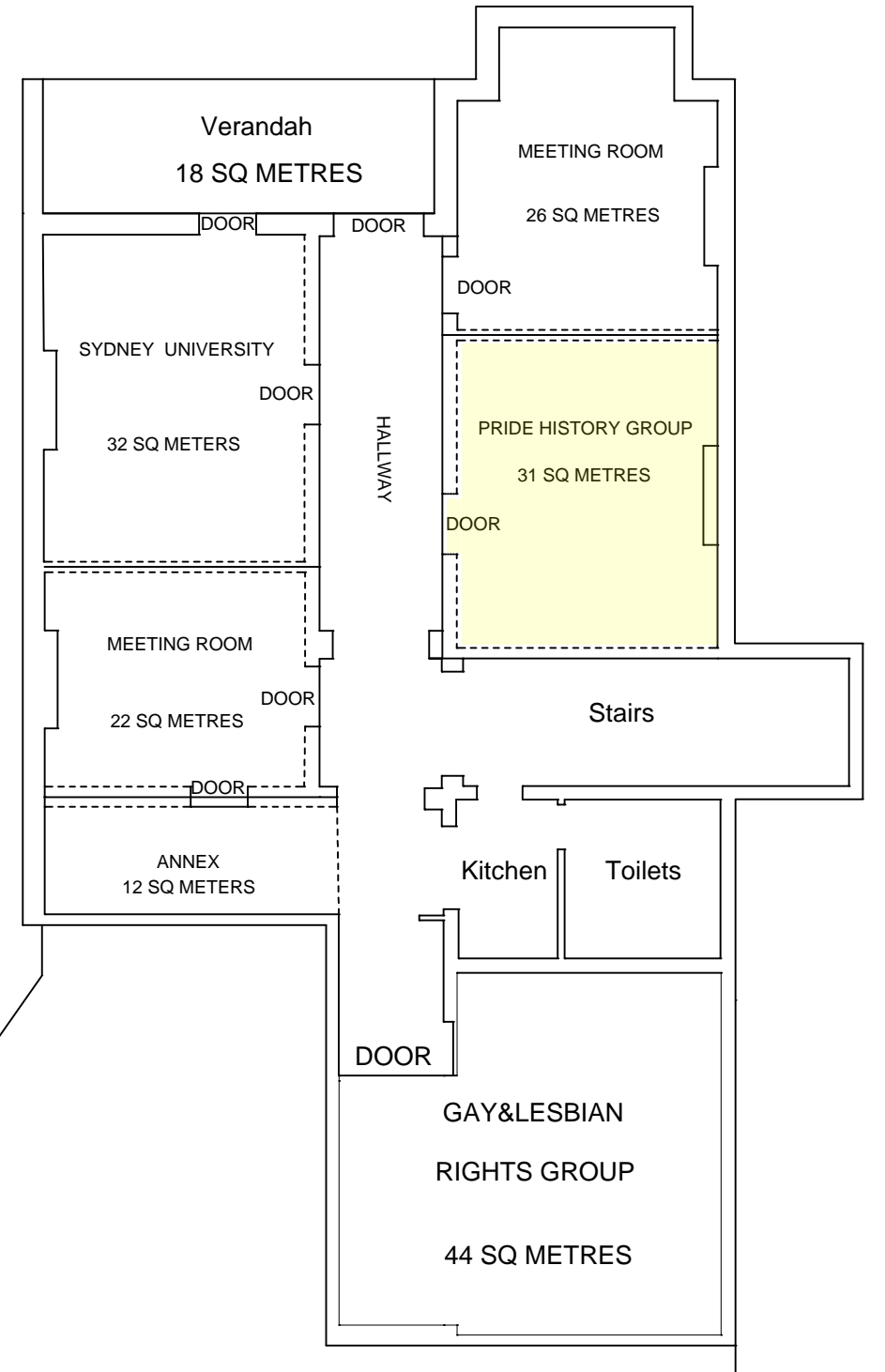
ROAD

WIGRAM

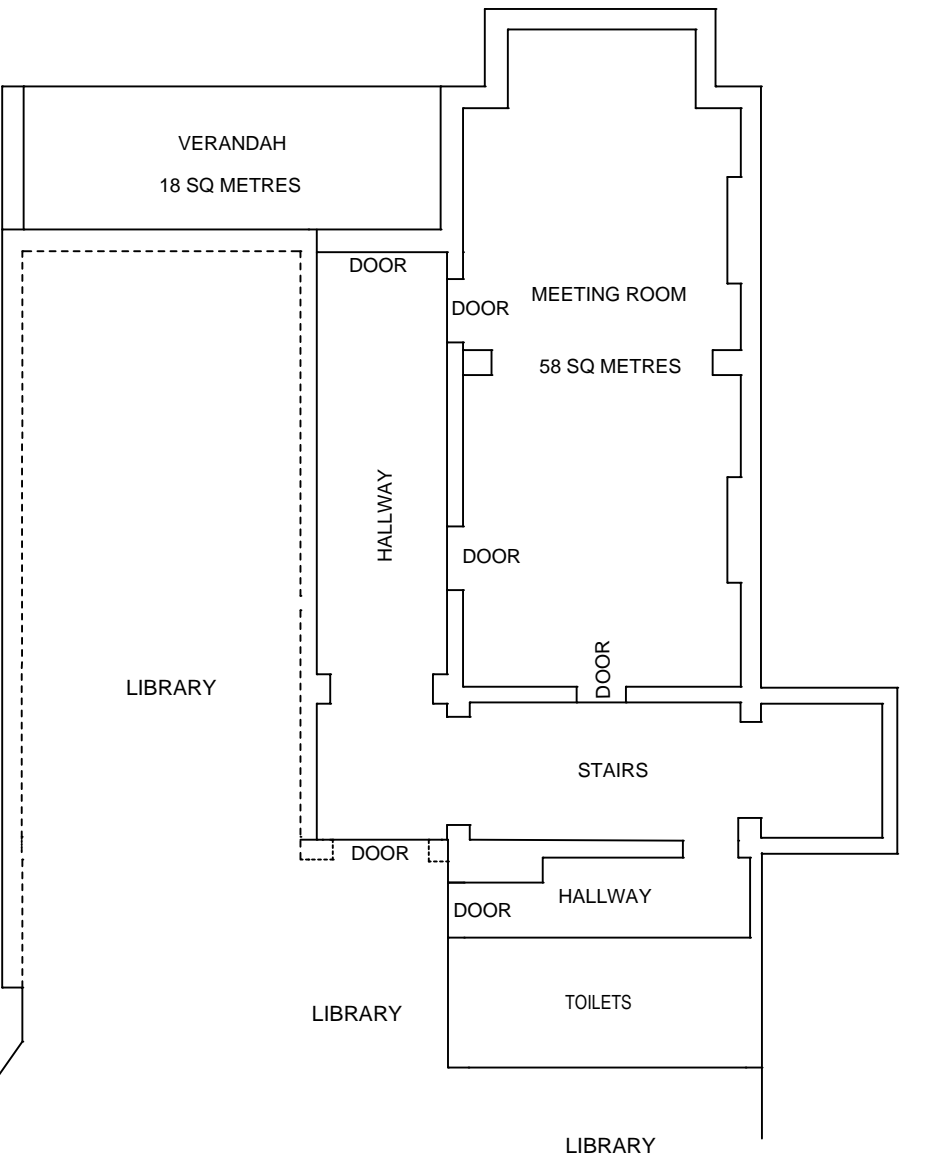


APPROX NORTH

FIRST FLOOR BENLEDI HOUSE



GROUND FLOOR BENLEDI HOUSE



- NOTE:(1) AREA OF LIBRARY MEASURED TO EXTERNAL WALLS OF BUILDING AND HALLWAY FACE OF BENLEDI HOUSE EXCLUDING TOILET AND ADJOINING HALLWAY
 (2)AREA OF TENANCYS BENLEDI HOUSE MEASURED TO HALLWAY FACE OF OF ADJOINING WALLS,CENTRELINE OF WALLS OF ADJOINING TENANCYS AND INTERNAL FACES OF WALLS OF EACH TENANCY
 (3)AREA OF VERANDAHS SHOWN SEPARATELY
 (4)AREA OF AIR CONDITIONING PLANT AREA SHOWN SEPERATELY
 (5)TITLE BOUNDARY OF SITE SHOWN BY THICK BLACK LINE ACCORDING TO DP852944

CITY OPERATIONS CITY INFRASTRUCTURE TECHNICAL SERVICES SURVEY GROUP CITY OF SYDNEY	SCALE	APPROVED
	HOR: 1:200	DIR. OF C.O
GLEBE COMMUNITY LIBRARY AND BENLEDI HOUSE 186-194 GLEBE POINT ROAD GLEBE	DETAILS	S5-12/960
	Survey PGC	
	Drawn PGC	
	Design	
	Checked	
Date Survey MAY2012	CIVILCAD DISC No. JOBS2012	