

LOFTUS STREET UPGRADE CONCEPT DESIGN DEVELOPMENT

DRAWING INDEX

DRAWING No.	DRAWING TITLE
L0001	DRAWING INDEX
L0002	LEGEND
L0010	KEY PLAN
L0101	PRECINCT PLAN
L1101	GENERAL ARRANGEMENT - SHEET 01 OF 03
L1102	GENERAL ARRANGEMENT - SHEET 02 OF 03
L1103	GENERAL ARRANGEMENT - SHEET 03 OF 03
L3001	SECTIONS

NOTES

GENERAL

- ALL INFORMATION SHOWN WITHIN THE LANDSCAPE DRAWING SET HAS BEEN PREPARED FOR THE PURPOSES OF PRELIMINARY COSTING AND DOES NOT REPRESENT A FULLY COORDINATED SET OF INFORMATION.
- PUBLIC DOMAIN ELEMENTS SUCH AS STREET FURNITURE ARE SHOWN INDICATIVELY, AND ARE SUBJECT TO FURTHER COORDINATION WITH CoS AND STAKEHOLDERS.
- STREET AND PUBLIC DOMAIN LIGHTING IS SHOWN INDICATIVELY AND IS SUBJECT TO ENGINEER'S LIGHTING DESIGN.

SURVEY INFORMATION

- THE PROPOSED SURFACE LEVELS, TREES TO BE RETAINED AND TREES TO BE REMOVED HAVE BEEN IDENTIFIED BASED ON SURVEY INFORMATION PROVIDED BY CoS AT THE TIME OF DESIGN AND ON-SITE INVESTIGATIONS. SITE INVESTIGATIONS HAVE IDENTIFIED A NUMBER OF EXISTING TREES AND STREET FURNITURE ELEMENTS THAT WERE NOT INDICATED ON THE SURVEY. FURTHER SURVEY INFORMATION MAY ALTER THE DESIGN.
- UNDERGROUND SERVICES HAVE BEEN REVIEWED BASED ON DURKIN SURVEY VERSION 1 DATED 10/05/2022 PROVIDED BY CoS. SERVICES THAT HAVE UNKNOWN DEPTHS OR LOW LEVEL OF ACCURACY WILL BE SUBJECT TO FINAL ON-SITE INVESTIGATIONS.
- EXISTING TREES RETAINED HAVE BEEN REVIEWED BASED ON ARBORIST REPORT DATED 27/08/2015 PROVIDED BY CoS. THE DETERMINATION OF THE REMOVAL OF ANY TREES WILL BE SUBJECT TO FINAL ARBORIST'S ADVICE WHICH MAY REQUIRE DETAILED ROOT INVESTIGATION.

EXISTING BUILDINGS AND PROPERTY

- ANY IMPACT TO EXISTING BUILDINGS AND PROPERTIES IS TO BE MANAGED BY CoS. BUILDING OUTLINES AND FOOTPRINTS SHOWN ON THE DRAWINGS ARE INDICATIVE ONLY AND SHOULD NOT BE RELIED UPON FOR DETAILED DESIGN.

VEHICLE MOVEMENTS

- LOFTUS STREET SOUTH OF CUSTOMS HOUSE LANE HAS BEEN DESIGNED TO ACCOMMODATE AN 8.8m SERVICE VEHICLE BASED ON SWEEP PATH INFORMATION PROVIDED BY CoS. CHANGES TO DESIGN VEHICLE, ACCESS ROUTES OR FURTHER VEHICLE SWEEP PATH TESTING MAY ALTER THE DESIGN.

UNDERGROUND SERVICES

- ALL ATTEMPTS HAVE BEEN MADE TO COORDINATE PROPOSED TREE AND TREE PIT LOCATIONS WITH EXISTING UNDERGROUND SERVICES BASED ON DURKIN SURVEY AND UTILITY INTERFACE AGREEMENTS WITH SERVICE PROVIDERS. FINAL PLACEMENT OF TREES AND TREE PIT AREAS ARE SUBJECT TO FINAL DESIGN, INCLUDING ON-SITE INVESTIGATION TO DETERMINE DEPTH AND LOCATION OF SERVICES NOT IDENTIFIED WITHIN DURKIN SURVEY.

SURFACE DRAINAGE

- SURFACE DRAINAGE FOR THE PUBLIC DOMAIN IS INDICATIVE ONLY AND HAS NOT BEEN COORDINATED WITH DRAINAGE ENGINEERING ADVICE, OR WITH INPUT FROM FLOOD MODELING.

EVENTS

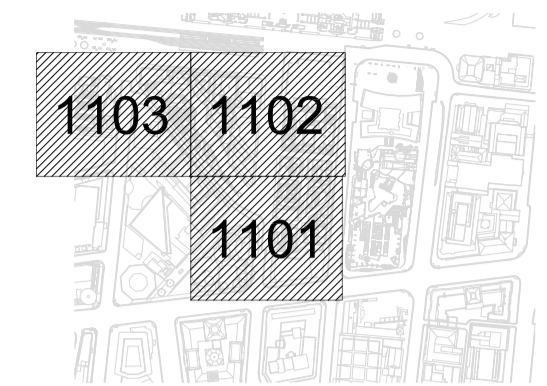
- THE PUBLIC DOMAIN HAS NOT BEEN DESIGNED TO MEET PROGRAMMATIC REQUIREMENTS FOR PUBLIC EVENTS OR LARGE SCALE GATHERINGS. SPACE-PROOFING OF 3x3m MARQUEES ON THE NORTHERN END OF LOFTUS STREET IS SHOWN INDICATIVELY ONLY AND MAY BE SUBJECT CHANGE.

HOSTILE VEHICLE MITIGATION

- THE PUBLIC DOMAIN HAS BEEN DESIGNED TO LIMIT VEHICLE MOVEMENTS TO THE PEDESTRIANISED AREAS OF LOFTUS STREET BETWEEN REIBY PLACE AND CUSTOMS HOUSE LANE. VEHICLE CONTROL INCLUDES BOLLARDS, LANDSCAPE AND URBAN ELEMENTS PROVIDED AS PHYSICAL DETERRENENTS, AND IS NOT DESIGNED TO PROVIDE AN IMPENETRABLE BARRIER OR TO MEET SPECIFIC BLAST OFFSET DISTANCES. THE DESIGN MAY BE SUBJECT TO CHANGE WITH AN INCREASE IN HOSTILE VEHICLE MITIGATION AND/OR BLAST PROTECTION REQUIREMENTS.

REFERENCE MAP

NORTH



NOTES

- DO NOT SCALE DRAWINGS. WRITTEN DIMENSIONS GOVERN.
- ALL DIMENSIONS ARE IN MILLIMETRES UNLESS NOTED OTHERWISE.
- ALL DIMENSIONS SHALL BE VERIFIED ON SITE BEFORE PROCEEDING WITH THE WORK. HASSELL SHALL BE NOTIFIED IN WRITING OF ANY DISCREPANCIES.
- THIS DRAWING MUST BE READ IN CONJUNCTION WITH ALL RELEVANT CONTRACTS, SPECIFICATIONS AND DRAWINGS.

© COPYRIGHT OF THIS DRAWING IS VESTED IN HASSELL. LTD.
2022 HASSELL. LTD.

THIS DRAWING IS AN UNCONTROLLED COPY, UNLESS NOTED OTHERWISE.

A FOR COSTING INFORMATION 24.06.2022

REV	DESCRIPTION	DATE

CONSULTANT

HASSELL LIMITED ACN 007 711 435
LEVEL 2 PIER 8/9 23 HICKSON ROAD
SYDNEY NSW 2000 AUSTRALIA
SYDNEY@HASSELLSTUDIO.COM
T 61 2 9101 2000

HASSELL

PROJECT

LOFTUS STREET UPGRADE
CONCEPT DESIGN DEVELOPMENT

DRAWING TITLE

DRAWING INDEX AND NOTES

STATUS

FOR INFORMATION (NOT FOR CONSTRUCTION)

SCALE @ A1	DRAWN	CO-ORD	REVIEWED	APPROVED
-	AC	AC	SW	SW

PROJECT NUMBER	DRAWING NUMBER	REV
012627	L0001	A

SITE

DETAIL REF	CODE	SYMBOL	DESCRIPTION
-	-		EXTENT OF WORKS BOUNDARY
-	-		EXISTING SITE LEVEL
-	-		EXISTING TOP OF KERB SITE LEVEL
-	-		EXISTING BOTTOM OF KERB SITE LEVEL

MATERIALS AND FINISHES - RAMPS

DETAIL REF	CODE	SYMBOL	DESCRIPTION
2.2.6	PR01		PEDESTRIAN RAMP - CoS GRANITE MATERIAL: AUSTRAL BLACK REFER CoS SPECIFICATION
2.2.10	VR01		VEHICULAR CROSSOVER - CoS GRANITE MATERIAL: AUSTRAL BLACK REFER CoS SPECIFICATION
-	PREX		PEDESTRIAN RAMP - EXISTING TO BE RETAINED AND PROTECTED
-	VREX		VEHICULAR CROSSOVER - EXISTING TO BE RETAINED AND PROTECTED

MATERIALS AND FINISHES - PAVEMENTS

DETAIL REF	CODE	SYMBOL	DESCRIPTION
-	PVEX		EXISTING PAVEMENT/FOOTPATH RETAINED AND PROTECT
2.2.1	PV01A		PAVING TYPE 01A - CoS GRANITE PAVING - VEHICULAR GRADE MATERIAL: AUSTRAL BLACK SIZE: VARIESx60mm DEPTH - REFER CoS SPECIFICATION
2.2.1 2.2.2 2.2.3 2.2.4	PV01B		PAVING TYPE 01B - CoS GRANITE PAVING - PEDESTRIAN GRADE MATERIAL: AUSTRAL BLACK SIZE: VARIESx50mm DEPTH - REFER CoS SPECIFICATION
-	PV03B		PAVING TYPE 03B - 1807 INTERPRETIVE FEATURE - VEHICULAR GRADE MATERIAL: AUSTRAL VERDE FINISH: EXFOLIATED AND ETCHED TEXT '1807' SIZE: 300x150x60mm
-	PV04		PAVING TYPE 04 - 1788 INTERPRETIVE PAVING FEATURE - VEHICULAR GRADE MATERIAL: AUSTRAL BLACK FINISH: SAWTOOTH/RIBBED SIZE: 900x450x60mm
-	PV07		1788 SHORELINE MARKER MATERIAL: TO MATCH EXISTING MARKERS (EAST CIRCULAR QUAY)
2.8.1	PV08		TGSi (WARNING) MATERIAL: GRANITE INTEGRATED TGSi COLOUR: HARDCOURT TBC, TO PROVIDE >30% LUMINANCE CONTRAST FINISH: EXFOLIATED SIZE: 300x300x50mm
3.1.9	PV09		PAVING TYPE 09 - SQUARE STONE SETTS - VEHICULAR GRADE MATERIAL: AUSTRAL BLACK SIZE: 150x60mm DEPTH - REFER CoS SPECIFICATION
3.2.3	PV10		CONCRETE RAMP MATERIAL: IN-SITU CONCRETE TO ENGINEER'S DETAIL

MATERIALS AND FINISHES - TREE SURROUNDS

DETAIL REF	CODE	SYMBOL	DESCRIPTION
-	TP01		TZANNES TREE SURROUND AND GUARD MATERIAL: STAINLESS STEEL PRODUCT: PN00122 (SURROUND) PN00119 (GUARD) SUPPLIER: ABUD NOTES: DETAIL TO ALIGN WITH LIGHT RAIL PROPOSALS
-	TP02		TREE SURROUND TYPE 02 (CIRCULAR) MATERIAL: STONESET POROUS PAVING SIZE: 1350mm Ø NOTES: EDGED WITH GALVANISED STEEL ANGLE 90x90x10mm 6mm POROUS PAVED INFILL SUPPLIED BY STONESET
-	TP03		TREE SURROUND TYPE 03 (SQUARE) MATERIAL: TERRABOND SIZE: 1350x1350mm NOTES: EDGED WITH GALVANISED STEEL ANGLE 90x90x10mm 6mm POROUS PAVED INFILL SUPPLIED BY STONESET
-	TPEX		EXISTING TREE SURROUND RETAIN AND PROTECT NOTES: ALLOW FOR MAKE GOOD POST CONSTRUCTION

MATERIALS AND FINISHES - WALLS, KERBS AND EDGES

DETAIL REF	CODE	SYMBOL	DESCRIPTION
-	FK01		FLUSH KERB TYPE 01 (REIBY PLACE) MATERIAL: AUSTRAL VERDE SIZE: 300xVARIESx(DEPTH TO MATCH ADJACENT PAVING)
1.1.1	KB01		KERB TYPE 01 MATERIAL: AUSTRAL VERDE SIZE: 300mm WIDTH - REFER CoS SPECIFICATION
1.1.1	KBEX		EXISTING KERB RETAIN AND PROTECT

FURNITURE AND FIXTURES

DETAIL REF	CODE	SYMBOL	DESCRIPTION
-	BL01		BOLLARD - REMOVABLE MATERIAL: STAINLESS STEEL PRODUCT: SSP150R C10.97 SLIMLINE BOLLARD SUPPLIER: LEDA SECURITY NOTES: ALL BOLLARDS TO HAVE HINGED COVER PLATES SCHP150B. ADDITIONAL COVER PLATE PER BOLLARD REQUIRED FOR STORAGE FOLLOWING REMOVAL
-	BL02		BOLLARD - RETRACTABLE (PAS68 RATED) MATERIAL: STAINLESS STEEL PRODUCT: PNEUMATIC AUTOMATIC BOLLARD (IMPACT RATING TBC) SUPPLIER: AUSTRALIAN BOLLARDS
4.4.1	BL03		BOLLARD - FIXED (PAS68 RATED) MATERIAL: STAINLESS STEEL PRODUCT: SSP150/200FC SLIMLINE BOLLARD (IMPACT RATING TBC) SUPPLIER: LEDA SECURITY
4.1.1 4.2.1 4.2.2	BN01		TZANNES SEAT MATERIAL: TIMBER AND STAINLESS STEEL PRODUCT: PN00120 SUPPLIER: ABUD NOTES: SUBSURFACE MOUNTED
-	BNEX		EXISTING BENCH SEAT RETAIN AND PROTECT
4.1.1	BR01		BICYCLE HOOP MATERIAL: STAINLESS STEEL PRODUCT: SLIM HOOP BST02 SUPPLIER: STREET FURNITURE AUSTRALIA NOTES: SUBSURFACE MOUNTED
-	BR02		BICYCLE RING ON SMART POLE MATERIAL: STAINLESS STEEL PRODUCT: CIRCULAR RING 600Ømm x 50mm SUPPLIER: STREET FURNITURE AUSTRALIA NOTES: FIXED TO EXISTING SMART POLE
-	BREX		EXISTING BICYCLE HOOP RETAIN AND PROTECT
4.1.1 4.3.1	RB01		TZANNES BIN MATERIAL: STAINLESS STEEL AND ALUMINIUM PRODUCT: PN00131 SUPPLIER: ABUD NOTES: SUBSURFACE MOUNTED
-	RBEX		EXISTING BIN RETAIN AND PROTECT

FURNITURE AND FIXTURES (CONT.)

DETAIL REF	CODE	SYMBOL	DESCRIPTION
-	KI01		KIOSK - SMALL CODE: SF3-1
-	PL01		PLANTER MATERIAL: GLASS REINFORCED CONCRETE SIZE: 1100Ømm 550(H)mm
-	FN01		MANAGED BISTRO CHAIR MATERIAL: PAINTED STEEL PRODUCT: 0101 - METAL CHAIR SUPPLIER: FERMOB
-	FN02		MANAGED BISTRO ROUND TABLE MATERIAL: PAINTED STEEL PRODUCT: 0245 - TABLE Ø 60cm SUPPLIER: FERMOB

FURNITURE AND FIXTURES - LIGHTING

DETAIL REF	CODE	SYMBOL	DESCRIPTION
-	LPEX		EXISTING LIGHTPOLE RETAIN AND PROTECT
-	TLEX		EXISTING TRAFFIC LIGHT RETAIN AND PROTECT
-	LP01		S1 SMARTPOLE MATERIAL: ALUMINIUM PRODUCT: S1 Type B SUPPLIER: HUB

TREE PLANTING

DETAIL REF	CODE	SYMBOL	DESCRIPTION
2.1.7 2.2.19	TR01		PROPOSED PALM <i>Livistona australis</i>
2.1.7 2.2.19	TR02		PROPOSED TREE <i>Flindersia australis</i>
2.1.7 2.2.19	TR03		PROPOSED TREE <i>Tristanopsis laurina</i>
-	TREX		TREE - EXISTING RETAINED AND PROTECT
2.2.17 2.2.19	TRPT		TREE PIT - STRUCTURAL SOIL SIZE: VARIESx1200mm DEPTH - REFER CoS SPECIFICATION NOTES: INCLUDE SUB-SOIL DRAINAGE

PLANT SCHEDULE

BOTANICAL NAME	COMMON NAME	CONT SIZE (L)	TOTAL
<i>Flindersia australis</i>	Crows Ash/Australian Teak	100L	5
<i>Livistona australis</i>	Cabbage Tree Palm	EX-GROUND, MIN HEIGHT 5m	31
<i>Tristanopsis laurina</i>	Water Gum	100L	4

NOTES
 1. DO NOT SCALE DRAWINGS. WRITTEN DIMENSIONS GOVERN.
 2. ALL DIMENSIONS ARE IN MILLIMETRES UNLESS NOTED OTHERWISE.
 3. ALL DIMENSIONS SHALL BE VERIFIED ON SITE BEFORE PROCEEDING WITH THE WORK. HASSELL SHALL BE NOTIFIED IN WRITING OF ANY DISCREPANCIES.
 4. THIS DRAWING MUST BE READ IN CONJUNCTION WITH ALL RELEVANT CONTRACTS, SPECIFICATIONS AND DRAWINGS.

© COPYRIGHT OF THIS DRAWING IS VESTED IN HASSELL, LTD.
 2022 HASSELL, LTD.

THIS DRAWING IS AN UNCONTROLLED COPY, UNLESS NOTED OTHERWISE.

REV	DESCRIPTION	DATE
A	FOR COSTING INFORMATION	24.06.2022

CONSULTANT
 HASSELL LIMITED ACN 007 711 435
 LEVEL 2 PIER 8/9 23 HICKSON ROAD
 SYDNEY NSW 2000 AUSTRALIA
 SYDNEY@HASSELLSTUDIO.COM
 T 61 2 9101 2000

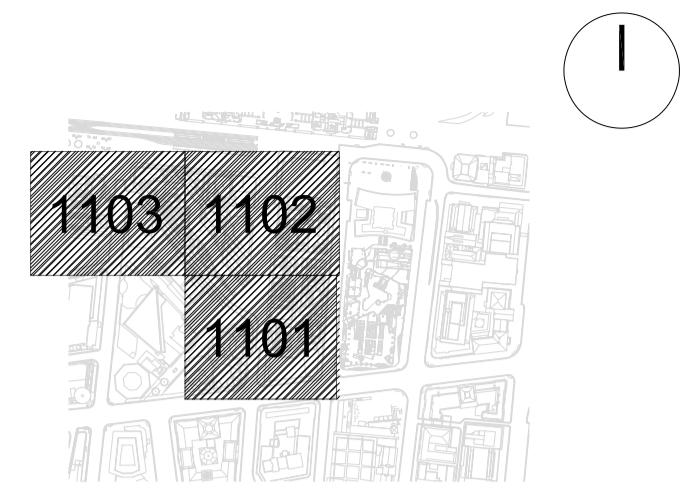
HASSELL

PROJECT
 LOFTUS STREET UPGRADE
 CONCEPT DESIGN DEVELOPMENT

DRAWING TITLE

LEGEND

STATUS				
FOR INFORMATION				
SCALE @ A1	DRAWN	CO-ORD	REVIEWED	APPROVED
-	AC	AC	SW	SW
PROJECT NUMBER	DRAWING NUMBER	REV		
012627	L0002	A		



- NOTES**
1. DO NOT SCALE DRAWINGS. WRITTEN DIMENSIONS GOVERN.
 2. ALL DIMENSIONS ARE IN MILLIMETRES UNLESS NOTED OTHERWISE.
 3. ALL DIMENSIONS SHALL BE VERIFIED ON SITE BEFORE PROCEEDING WITH THE WORK. HASSELL SHALL BE NOTIFIED IN WRITING OF ANY DISCREPANCIES.
 4. THIS DRAWING MUST BE READ IN CONJUNCTION WITH ALL RELEVANT CONTRACTS, SPECIFICATIONS AND DRAWINGS.

© COPYRIGHT OF THIS DRAWING IS VESTED IN HASSELL, LTD.
2022 HASSELL, LTD.

THIS DRAWING IS AN UNCONTROLLED COPY, UNLESS NOTED OTHERWISE.

A	FOR COSTING INFORMATION	24.06.2022
REV	DESCRIPTION	DATE

CONSULTANT
 HASSELL LIMITED ACN 007 711 435
 LEVEL 2 PIER 8/9 23 HICKSON ROAD
 SYDNEY NSW 2000 AUSTRALIA
 SYDNEY@HASSELLSTUDIO.COM
 T 61 2 9101 2000

HASSELL

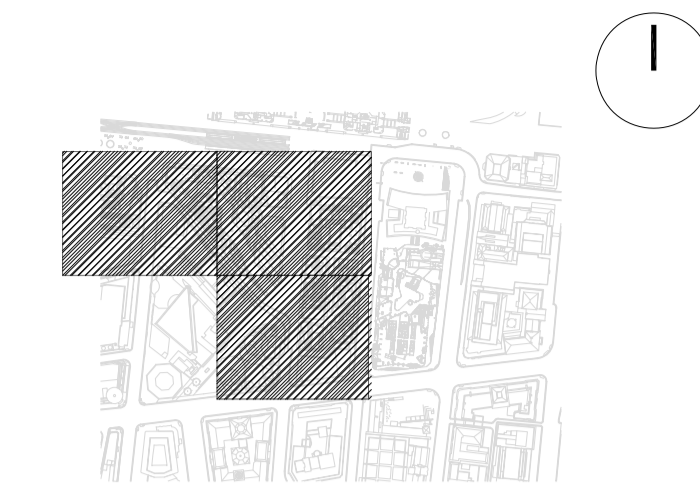
PROJECT
 LOFTUS STREET UPGRADE
 CONCEPT DESIGN DEVELOPMENT

DRAWING TITLE
 KEY PLAN



STATUS

FOR INFORMATION					(NOT FOR CONSTRUCTION)
SCALE @ A1	DRAWN	CO-ORD	REVIEWED	APPROVED	
1:500	AC	AC	SW	SW	
PROJECT NUMBER	DRAWING NUMBER		REV		
012627	L0011		A		



- NOTES**
1. DO NOT SCALE DRAWINGS. WRITTEN DIMENSIONS GOVERN.
 2. ALL DIMENSIONS ARE IN MILLIMETRES UNLESS NOTED OTHERWISE.
 3. ALL DIMENSIONS SHALL BE VERIFIED ON SITE BEFORE PROCEEDING WITH THE WORK. HASSELL SHALL BE NOTIFIED IN WRITING OF ANY DISCREPANCIES.
 4. THIS DRAWING MUST BE READ IN CONJUNCTION WITH ALL RELEVANT CONTRACTS, SPECIFICATIONS AND DRAWINGS.

© COPYRIGHT OF THIS DRAWING IS VESTED IN HASSELL, LTD.
2022 HASSELL, LTD.

THIS DRAWING IS AN UNCONTROLLED COPY, UNLESS NOTED OTHERWISE.

REV	DESCRIPTION	DATE
A	FOR COSTING INFORMATION	

CONSULTANT
 HASSELL LIMITED ACN 007 711 435
 LEVEL 2 PIER 8/9 23 HICKSON ROAD
 SYDNEY NSW 2000 AUSTRALIA
 SYDNEY@HASSELLSTUDIO.COM
 T 61 2 9101 2000

HASSELL

PROJECT
 LOFTUS STREET UPGRADE
 CONCEPT DESIGN DEVELOPMENT

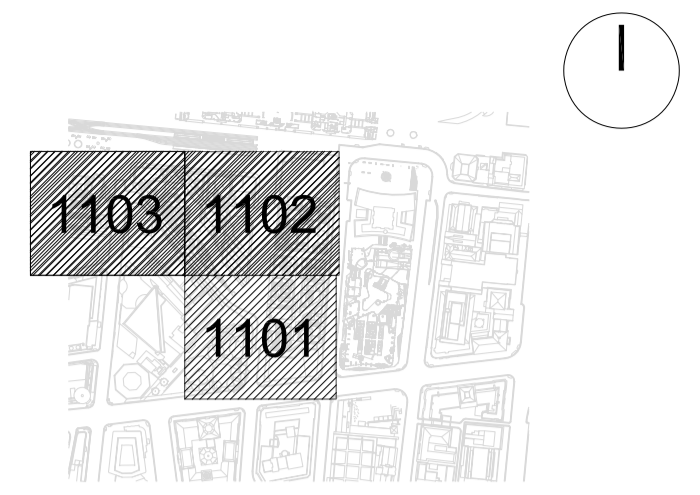
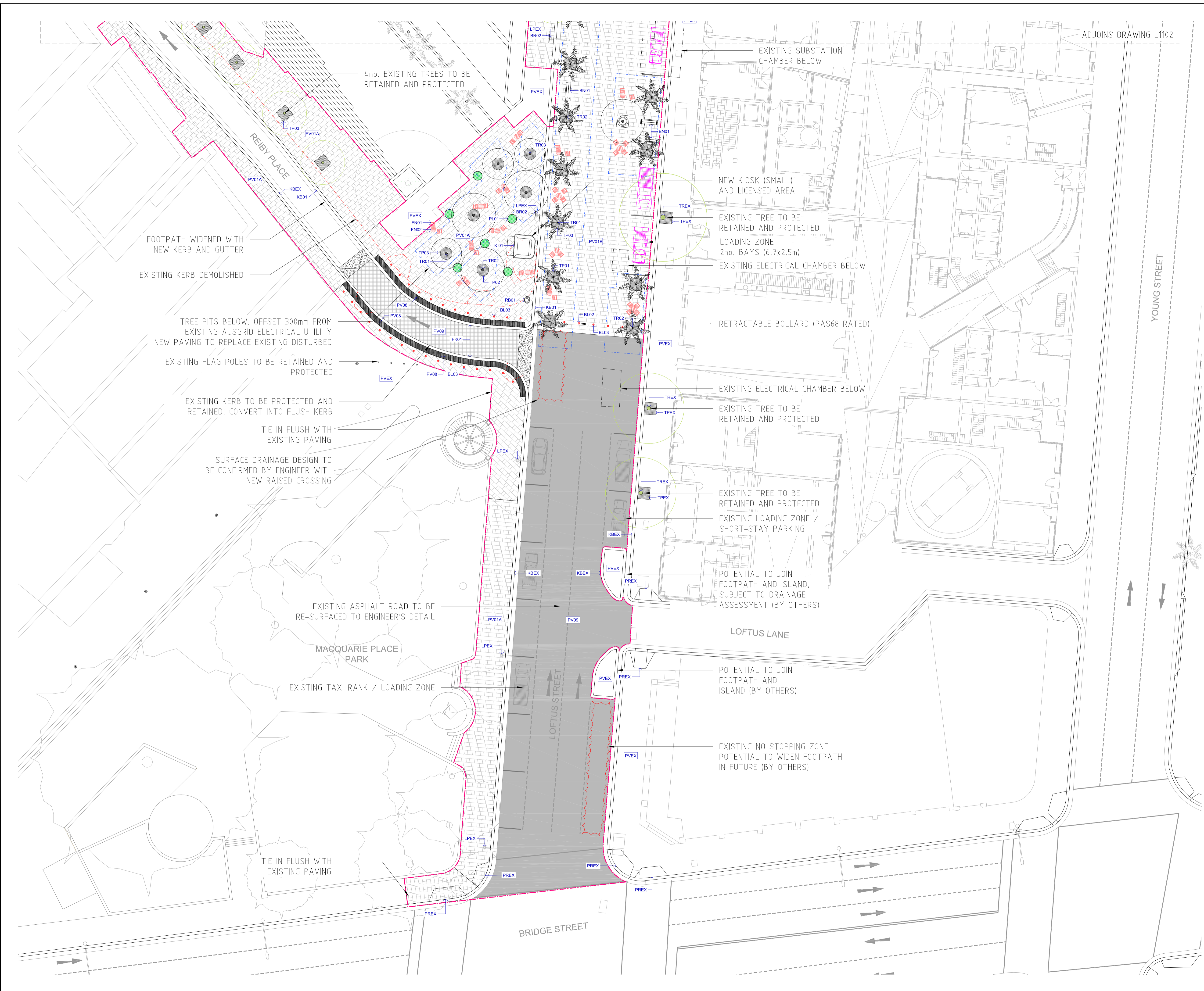
DRAWING TITLE
 PRECINCT PLAN



STATUS
 FOR INFORMATION (NOT FOR CONSTRUCTION)

SCALE @ A1	DRAWN	CO-ORD	REVIEWED	APPROVED
1:500	AC	AC	SW	SW

PROJECT NUMBER	DRAWING NUMBER	REV
012627	L0101	A



- NOTES**
1. DO NOT SCALE DRAWINGS. WRITTEN DIMENSIONS GOVERN.
 2. ALL DIMENSIONS ARE IN MILLIMETRES UNLESS NOTED OTHERWISE.
 3. ALL DIMENSIONS SHALL BE VERIFIED ON SITE BEFORE PROCEEDING WITH THE WORK. HASSELL SHALL BE NOTIFIED IN WRITING OF ANY DISCREPANCIES.
 4. THIS DRAWING MUST BE READ IN CONJUNCTION WITH ALL RELEVANT CONTRACTS, SPECIFICATIONS AND DRAWINGS.

© COPYRIGHT OF THIS DRAWING IS VESTED IN HASSELL. LTD. 2022 HASSELL. LTD.
 THIS DRAWING IS AN UNCONTROLLED COPY, UNLESS NOTED OTHERWISE.

A	FOR COSTING INFORMATION	24.06.2022
REV	DESCRIPTION	DATE

CONSULTANT
 HASSELL LIMITED ACN 007 711 435
 LEVEL 2 PIER 8/9 23 HICKSON ROAD
 SYDNEY NSW 2000 AUSTRALIA
 SYDNEY@HASSELLSTUDIO.COM
 T 61 2 9101 2000

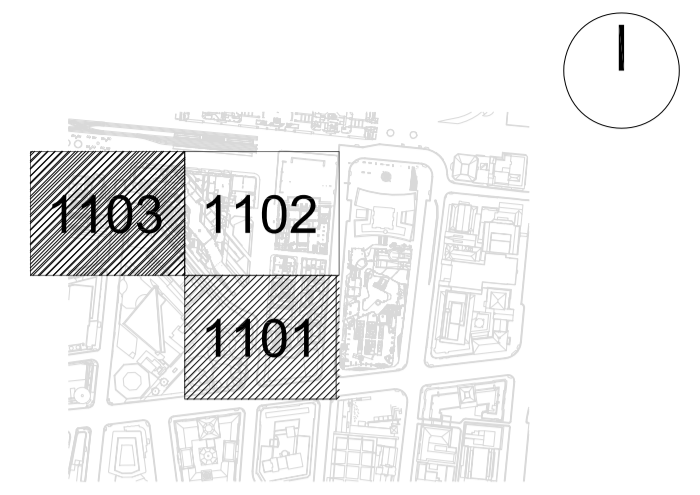
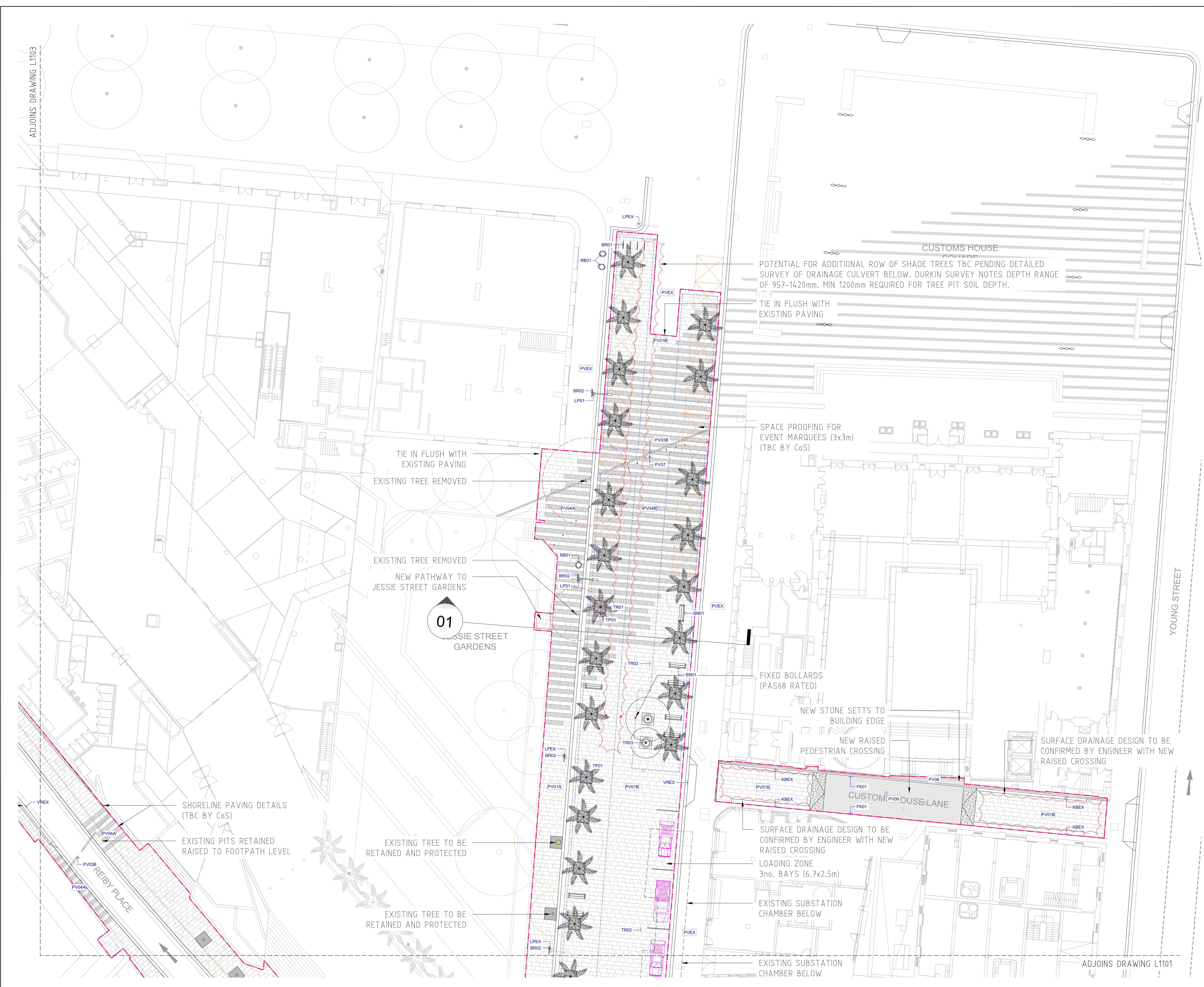
HASSELL
 PROJECT
**LOFTUS STREET UPGRADE
 CONCEPT DESIGN DEVELOPMENT**

DRAWING TITLE
 GENERAL ARRANGEMENT
 SHEET 01 OF 03



STATUS
FOR INFORMATION (NOT FOR CONSTRUCTION)

SCALE @ A1	DRAWN	CO-ORD	REVIEWED	APPROVED
1:200	AC	AC	SW	SW
PROJECT NUMBER	DRAWING NUMBER	REV		
012627	L1101	A		



- NOTES
- DO NOT SCALE DRAWINGS. WRITTEN DIMENSIONS GOVERN.
 - ALL DIMENSIONS ARE IN MILLIMETRES UNLESS NOTED OTHERWISE.
 - ALL DIMENSIONS SHALL BE VERIFIED ON SITE BEFORE PROCEEDING WITH THE WORK. HASSELL SHALL BE NOTIFIED IN WRITING OF ANY DISCREPANCIES.
 - THIS DRAWING MUST BE READ IN CONJUNCTION WITH ALL RELEVANT CONTRACTS, SPECIFICATIONS AND DRAWINGS.

© COPYRIGHT OF THIS DRAWING IS VESTED IN HASSELL, LTD. 2022 HASSELL, LTD.

THIS DRAWING IS AN UNCONTROLLED COPY, UNLESS NOTED OTHERWISE.

A	FOR COSTING INFORMATION	24.06.2022
REV	DESCRIPTION	DATE

CONSULTANT
 HASSELL LIMITED ACN 007 711 435
 LEVEL 2 PIER 8/9 23 HICKSON ROAD
 SYDNEY NSW 2000 AUSTRALIA
 SYDNEY@HASSELLSTUDIO.COM
 T 61 2 9101 2000

HASSELL

PROJECT
**LOFTUS STREET UPGRADE
 CONCEPT DESIGN DEVELOPMENT**

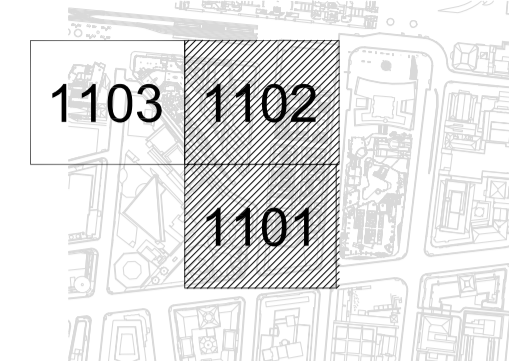
DRAWING TITLE
**GENERAL ARRANGEMENT
 SHEET 02 OF 03**



STATUS
FOR INFORMATION (NOT FOR CONSTRUCTION)

SCALE @ A1	DRAWN	CO-ORD	REVIEWED	APPROVED
1:200	AC	AC	SW	SW

PROJECT NUMBER	DRAWING NUMBER	REV
012627	L1102	A

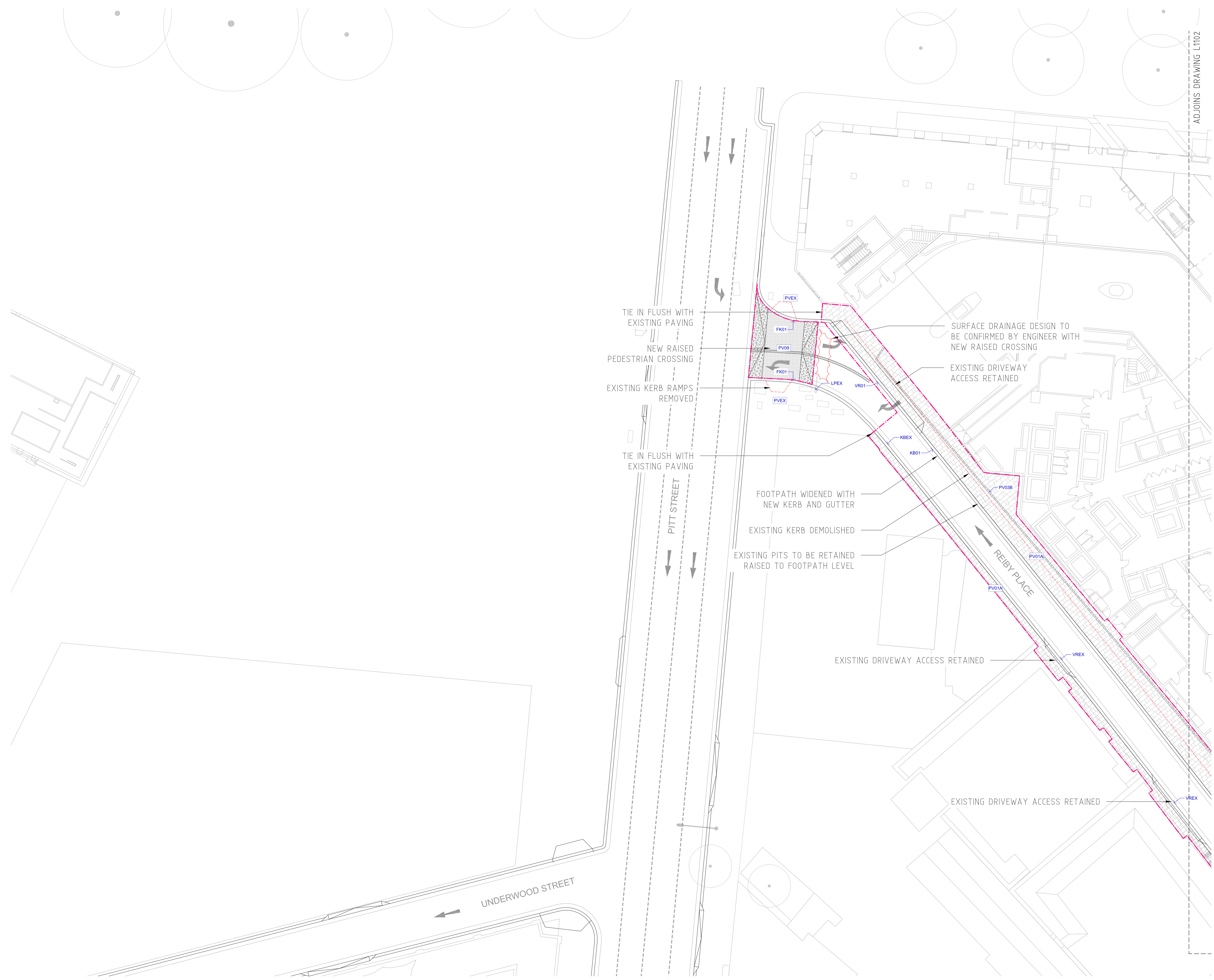


NOTES

1. DO NOT SCALE DRAWINGS. WRITTEN DIMENSIONS GOVERN.
2. ALL DIMENSIONS ARE IN MILLIMETRES UNLESS NOTED OTHERWISE.
3. ALL DIMENSIONS SHALL BE VERIFIED ON SITE BEFORE PROCEEDING WITH THE WORK. HASSELL SHALL BE NOTIFIED IN WRITING OF ANY DISCREPANCIES.
4. THIS DRAWING MUST BE READ IN CONJUNCTION WITH ALL RELEVANT CONTRACTS, SPECIFICATIONS AND DRAWINGS.

© COPYRIGHT OF THIS DRAWING IS VESTED IN HASSELL, LTD.
2022 HASSELL, LTD.

THIS DRAWING IS AN UNCONTROLLED COPY, UNLESS NOTED OTHERWISE.



A	FOR COSTING INFORMATION	24.06.2022
REV	DESCRIPTION	DATE

CONSULTANT
 HASSELL LIMITED ACN 007 711 435
 LEVEL 2 PIER 8/9 23 HICKSON ROAD
 SYDNEY NSW 2000 AUSTRALIA
 SYDNEY@HASSELLSTUDIO.COM
 T 61 2 9101 2000

HASSELL
 PROJECT
**LOFTUS STREET UPGRADE
 CONCEPT DESIGN DEVELOPMENT**

DRAWING TITLE
**GENERAL ARRANGEMENT
 SHEET 03 OF 03**



STATUS
FOR INFORMATION (NOT FOR CONSTRUCTION)

SCALE @ A1	DRAWN	CO-ORD	REVIEWED	APPROVED
1:200	AC	AC	SW	SW

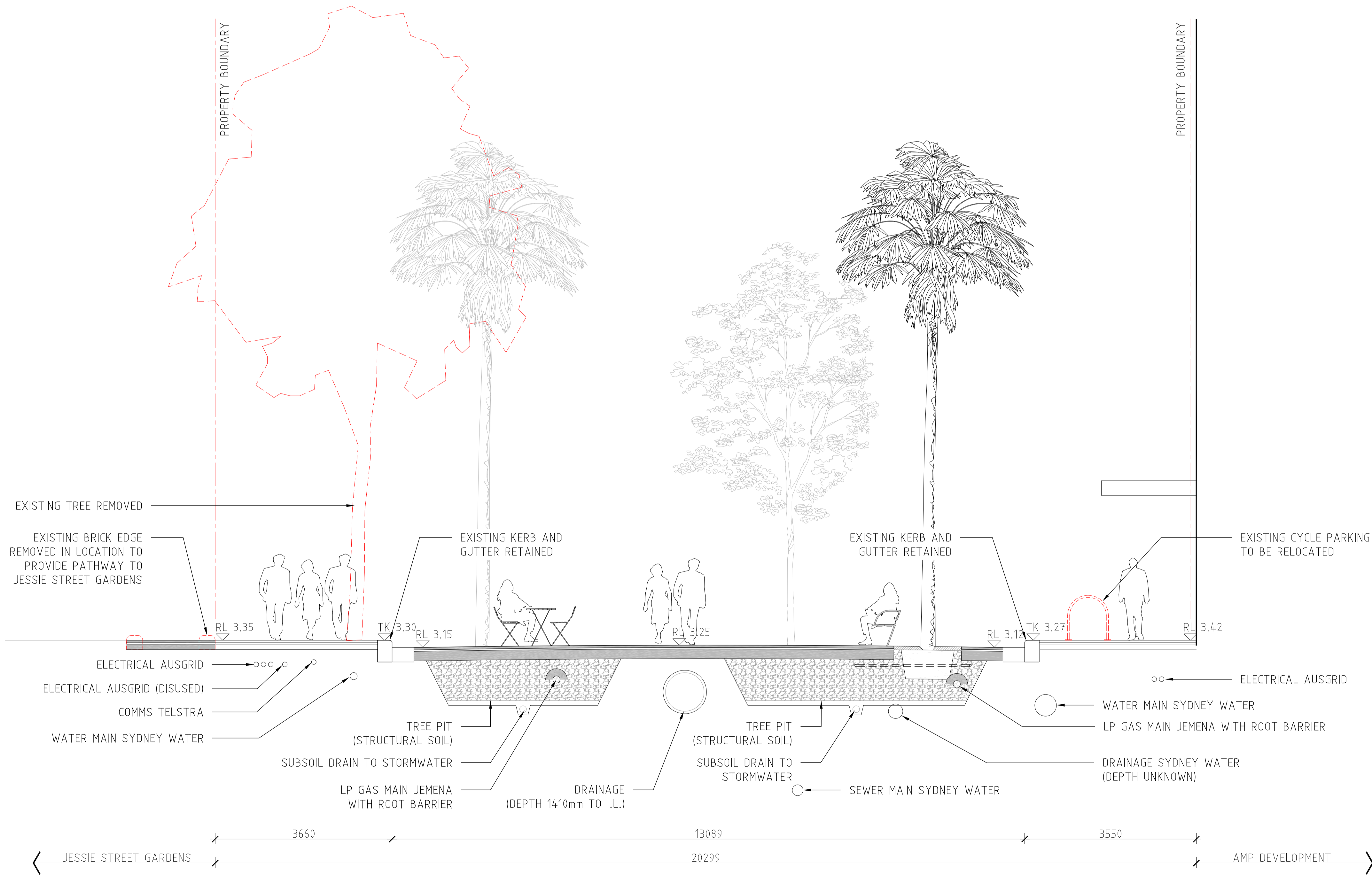
PROJECT NUMBER	DRAWING NUMBER	REV
012627	L1103	A



- NOTES**
- DO NOT SCALE DRAWINGS, WRITTEN DIMENSIONS GOVERN.
 - ALL DIMENSIONS ARE IN MILLIMETRES UNLESS NOTED OTHERWISE.
 - ALL DIMENSIONS SHALL BE VERIFIED ON SITE BEFORE PROCEEDING WITH THE WORK. HASSELL SHALL BE NOTIFIED IN WRITING OF ANY DISCREPANCIES.
 - THIS DRAWING MUST BE READ IN CONJUNCTION WITH ALL RELEVANT CONTRACTS, SPECIFICATIONS AND DRAWINGS.

© COPYRIGHT OF THIS DRAWING IS VESTED IN HASSELL, LTD.
2022 HASSELL, LTD.

THIS DRAWING IS AN UNCONTROLLED COPY, UNLESS NOTED OTHERWISE.



A	FOR COSTING INFORMATION	24.06.2022
REV	DESCRIPTION	DATE

CONSULTANT
 HASSELL LIMITED ACN 007 711 435
 LEVEL 2 PIER 8/9 23 HICKSON ROAD
 SYDNEY NSW 2000 AUSTRALIA
 SYDNEY@HASSELLSTUDIO.COM
 T 61 2 9101 2000

HASSELL
 PROJECT
LOFTUS STREET UPGRADE
 CONCEPT DESIGN DEVELOPMENT

DRAWING TITLE
SITE SECTIONS



STATUS
 FOR INFORMATION (NOT FOR CONSTRUCTION)

SCALE @ A1	DRAWN	CO-ORD	REVIEWED	APPROVED
1:50	AC	AC	SW	SW
PROJECT NUMBER	DRAWING NUMBER	REV		
012627	L3001	A		

01 LOFTUS STREET TYPICAL SECTION
 1:50@A1