



2014-15



Contents

Message from the Lord Mayor	3
Message from the CEO	5
About Sydney	6
About the City of Sydney	8
Legislative requirements	13

Legend

\$	Cost
°C	Degrees Celsius
Ha	Hectare
Kg	Kilograms
kL	Kilolitres
kWp	Kilowatt-peak
LED	Light Emitting Diode
LGA	Local Government Area
M ³	Cubic metre
ML	Megalitres
Mm	Millimetre
MWh	Megawatt hour
MWe	Megawatt equivalent
pphm	Parts per million per hour
ppm CO ₂	Parts per million carbon dioxide
t	Tonne
tCO ₂ e	Tonnes of carbon dioxide equivalent
µg/m ³	Micrograms per cubic metre

Message from the Lord Mayor

We've reduced greenhouse emissions by 21 per cent in our own operations and emissions across our Local Government Area have fallen by 12 per cent at the same time as we have enjoyed a period of strong economic growth.

Clover Moore, Lord Mayor

For Sydney, 2015 has been a time of tremendous change – the George Street light rail and the massive redevelopment of Green Square are now well under way.

And the City is participating in the Rockefeller Foundation's prestigious 100 Resilient Cities Initiative along with London, Paris, New York and Singapore. We're leading the development of a comprehensive resilience strategy for metropolitan Sydney working with the State Government, businesses and other local councils.

The City has an international reputation for liveability. Since 2004, we've completed over 250 major projects including parks, playgrounds, childcare, pools, libraries, theatres, community and cultural spaces. We're now working on 370 projects as part of our ten-year plan.

Providing child-care for the ever-increasing number of young families remains a priority, with six new centres to be completed by the end of next year.

We actively encourage design excellence in private development and our own public projects. Our own public projects have won more than 85 national and international design awards.

Our Economic Development Strategy is continuously expanding to look at new opportunities and challenges. We've focussed on retail, working closely with our Retail Advisory Panel, tourism and visitor accommodation and are now investigating tech start-ups, international education, how to strengthen connections with Asia and locally, how to further support our village businesses especially in key precincts such as Kings Cross, Darlinghurst, Redfern, Glebe and Pyrmont.

With an average of 50 new apartments being completed every week, Green Square is on track as NSW's largest urban renewal area.

Our commitment from the start has been to get great design for residential development and great public domain, beautiful parks and community facilities for both the resident and the worker communities. And we've committed \$540 million for roads, stormwater, footpaths and street furniture and facilities including childcare, a new library and plaza, new parks and playgrounds, an aquatic centre, affordable housing and creative spaces.

We are continuing to work on alternative transport modes and we have already completed 110 km of our 200 km cycling network including separated cycle ways; shared paths and other interventions in smaller streets.

Our local government area generates around \$108 billion in economic activity and contributes eight per cent of Australia's GDP and 22 per cent of the economy of NSW.

Clover Moore, Lord Mayor

The growing numbers of cycling commuters – a 100 per cent increase over the past three years – is being supported by businesses increasingly providing end-of-trip facilities.

Our support for car share has helped the market grow and helped reduce the demand on inner city parking – there are now 26,000 car share members in Sydney using just two per cent of all on-street spaces.

A key challenge for Sydney is housing affordability. In March this year, we held a Housing Diversity Summit with 140 key experts, followed by a sold out City Talk where we continued the conversation with members of the public.

Council is now finalising a Housing Issues Paper that identifies options for action. The housing affordability crisis can only be solved with all of government and industry working together, and I am proud that the City is leading the way on this very important issue.

We've continued our commitment to Sydney's creative and cultural life, investing over \$34 million each year, through grants and sponsorship and supporting major events like the Sydney Writers' Festival, Sydney Film Festival and Mardi Gras.

Art & About is one of the City's most popular festivals and after 13 years of program that jam-packed one month with temporary public art, this year we launched a yearlong calendar of creativity.

We are also pleased to continue our work on the Eora Journey public art projects. With the support of the RSL, the Coloured Diggers Project and other stakeholders, we unveiled a public artwork to commemorate Aboriginal and Torres Strait Islander service men and women in Hyde Park – *YININMADYEMI Thou didst let fall*.

Climate change is the most pressing issue of our time. At the City our work shows that more ambitious targets are possible and compatible with strong economic growth.

We've reduced greenhouse emissions by 21 per cent in our own operations and emissions across our Local Government Area have fallen by 12 per cent at the same time as we have enjoyed a period of strong economic growth.

Our local government area generates around \$108 billion in economic activity and contributes eight per cent of Australia's GDP and 22 per cent of the economy of NSW.

This is a critical time for our City, and as the State Government thinks about the future of local government in NSW and potential amalgamations, we strongly believe that the City of Sydney should be left to get on with an outstanding job!

I'd like to thank our City staff under the leadership of Monica Barone who do such a fantastic job across the whole range of our activities.



Clover Moore
Lord Mayor

Message from the CEO

The financial statements show that the City remains in a strong financial position while delivering the highest quality services and facilities to our residents and businesses and a record capital works program.

Monica Barone, Chief Executive Officer

After many years of planning, the delivery of essential infrastructure in the Green Square Town Centre has now commenced. The overall program is progressing according to plan in order to realise the development of an almost completely-new town for this inner city precinct.

Some essential infrastructure projects being delivered include new roads, a high street and essential drainage. Planning is well advanced for the new community facilities such as the library and plaza, child care and other facilities on the South Sydney Hospital site and the Gunyama Park and Aquatic Centre. We already have some 13,000 people living in Green Square which is forecast to grow to over 60,000.

The City is working with Transport for New South Wales (TfNSW) and the light rail designers on the implementation of light rail down George Street to Randwick and the University of NSW. The successful integration of walking and cycling strategies with the light rail project will ensure a high class accessible public domain.

In April 2015, the City established an emergency shelter for rough sleepers during an extreme storm event. The shelter was delivered in partnership with the NSW Department of Family and Community Services and non-government homelessness services. Over three days, 61 people accessed the shelter. 45 people accepted temporary accommodation and received follow up support from specialist homelessness services. Two people were also offered permanent housing.

The City and the NSW Department of Family and Community Services have now entered into a joint Emergency Response Protocol for Rough Sleepers in Sydney. The protocol establishes a coordinated response between the City, the Department and other stakeholders to support rough sleepers during any future emergencies such as extreme weather events.

Since the adoption of the Economic Development Strategy in December 2013, work has continued on actions plans for a number of our key economic sectors or themes including International Education, Retail, Tech Startups, Connections with Asia, Village Business and the Eora Journey Economic Development Plan.

We've undertaken a 12 month pilot program of retail activation in Pitt Street Mall to support events and encourage increased footfall in and around our core retail precinct. Between September 2014 and June 2015, 8 events have been held as part of the program.

The City established a partnership with Business Events Sydney, driven by the need to mitigate the effects of the closure of the Sydney Convention and Exhibition Centre. It responded to concerns from the accommodation sector who rely on business visitors as a key source of room night revenue. As at 30 April 2015, this investment has assisted in the securing of 24 events that will deliver an estimated economic impact of \$71 million and attract delegates who will spend approximately 79,250 days in Sydney. For these events, the City's contribution has generated an economic return of approximately \$90 for every \$1 spent.

The financial statements show that the City remains in a strong financial position while delivering the highest quality services and facilities to our residents and businesses and a record capital works program.

Our services and programs continue to implement the vision of Sustainable Sydney 2030 to create a vibrant green, global and connected City.

I look forward to working with our community to continue to meet the current and future needs of a growing City of Sydney.


Monica Barone, Chief Executive Officer

About Sydney



Defining Sydney

For clarity, **the City of Sydney (or the City)** refers to the council as an organisation, responsible for the administration of the city.

The Council refers to the elected Councillors of the City of Sydney.

The city refers to the geographical area that is administered by the City of Sydney and its physical elements.

The city centre encompasses the old Sydney 'Central Business District' and includes major civic functions, government offices, cultural and entertainment assets and runs between Circular Quay and Central Station, Domain/Hyde Park and Darling Harbour.

Inner Sydney refers to the 11 local government areas of inner Sydney: the City of Sydney, North Sydney, Ashfield, Botany Bay, Canada Bay, Leichhardt, Marrickville, Randwick, Rockdale, Waverley and Woollahra.

The Sydney region refers to the 43 local government areas of the Sydney metropolitan area and Central Coast (this is also the area defined by the Australian Bureau of Statistics as the Sydney Statistical Division).

The area

The City of Sydney local government area (LGA) covers 26.15 square kilometres. It covers the Sydney Harbour foreshore from Rushcutters Bay to Glebe and Annandale in the west, Sydney Park and Rosebery in the south, and Centennial Park and Paddington in the east.

Within the LGA boundaries, waterways and some public areas are under the executive control of various NSW Government agencies including the Sydney Harbour Foreshore Authority, Transport for NSW, Sydney Ports Corporation, the Centennial and Moore Park Trust, the Royal Botanic Garden and Domain Trust, Commonwealth Department of Defence, UrbanGrowth NSW Development Corporation and Barangaroo Delivery Authority.

The economy*

The gross domestic product (GDP) of the city in 2013/14 is estimated to be approximately \$108 billion. This represents 7 per cent of the total national economy in Australia and almost a quarter of the entire GDP for New South Wales.

The estimated number of individual businesses in the City of Sydney in 2012 was nearly 22,000 and 40 per cent of the headquarters of the top 500 Australian corporations are located in Sydney.

Overall the city has a working population that is just under 4 per cent of the total workforce in Australia. On an average weekday in 2012, 437,000 people worked within the city, 22 per cent in the finance and financial services sector and nearly 18 per cent in professional and business services. Nearly 45 per cent of the city's workforce in 2011 was born overseas.

The city is the workplace for 21 per cent of the entire finance sector, 15 per cent of the total information, media and technology industry and 11 per cent of creative and performing arts activity in Australia. The proportion is even greater in more specific industries such as internet publishing and broadcasting (56 per cent).

City development*

The city has over 35 million square metres of internal floor space. In 2012, around 47 per cent of internal floor space was devoted to businesses in key industries including the finance sector, professional and business services and tourism. Just over a quarter was dedicated to residential uses.

The city is home to 60 per cent of metropolitan Sydney's hotel rooms. Over the past decade the number of visitors staying in city hotels has increased by 1 million arrivals a year. In 2012, the city received 4.25 million hotel visitors with an estimated direct spend into the city of over \$5 billion.

Visitor growth in recent times has largely been from Asia, particularly China, India and Korea.

Every weekday 1.2 million people live, work, study, shop, visit and sightsee in the city.

The residents*

As at June 2014, the estimated resident population of the City was 198,331 people. Between 2004 and 2014, the City's population increased by nearly 30 per cent. By 2031, it is estimated 273,500 people will live in the boundaries of the existing local government area.

Nearly half of the city's residents in 2011 were born overseas, of which more than a third came from a country where English is not the first language. The dominant non-English languages spoken at home are Mandarin, followed by Cantonese and Thai.

The city is also home to one of Sydney's largest communities of Aboriginal and Torres Strait Islander peoples.

In 2011, almost half of the city's residents were aged between 18 and 34 years of age. The median age of city residents was 32 years.

* Sources: 2011 Australian Bureau of Statistics Census of Population and Housing, 2012 City of Sydney Floor Space and Employment Survey, Tourist Accommodation, Australia (ABS Cat no. 8635.0), Regional Population Growth, Australia (ABS Cat no. 3218.0)

About the City of Sydney

The City of Sydney – roles and responsibilities

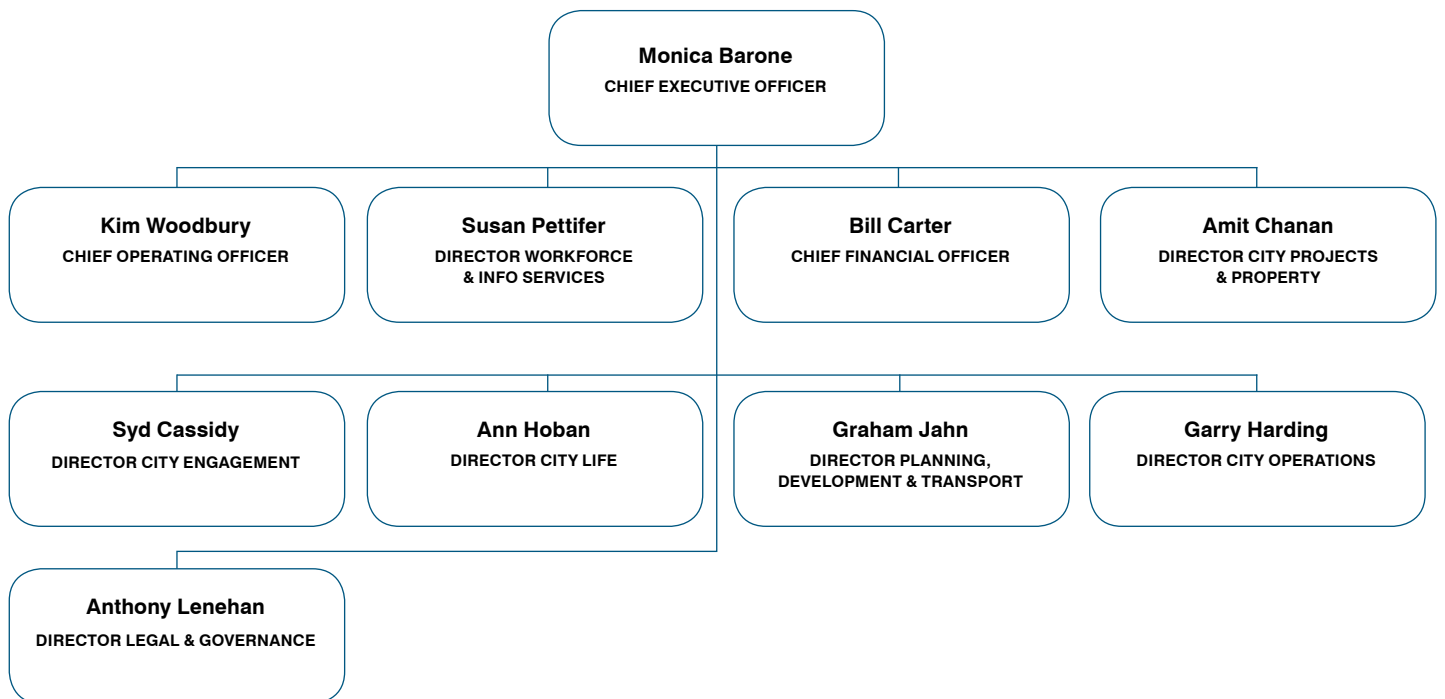
The City of Sydney, as a local government organisation is governed by the requirements of the Local Government Act (1993) and Regulation, the City of Sydney Act (1988) and other relevant legislative provisions.

The Local Government Act includes the Charter, which identifies the matters councils need to consider when carrying out their responsibilities. While following this charter, in reality councils have a range of roles – as a leader, service provider, regulator, advocate, facilitator and educator. Councils have a responsibility to formulate and pursue their community's vision and ideas, provide civic leadership, deliver key services and express local ideas and concerns about important issues to other levels of government.

The following chart shows the City's organisational structure and senior executive. The Directors lead the provision of key services and delivery of programs and projects to achieve the community's vision.

There are services that all councils must provide, and some which councils can choose to make available. Many services are also provided by different state and federal agencies, such as public transport, hospitals, and education. There are new policy approaches that influence or direct Council's responses, and legislation that affects the provision of current services. Council's roles extend beyond the direct provision of services to advocating for an equitable allocation of resources from the state and federal governments.

About the City of Sydney

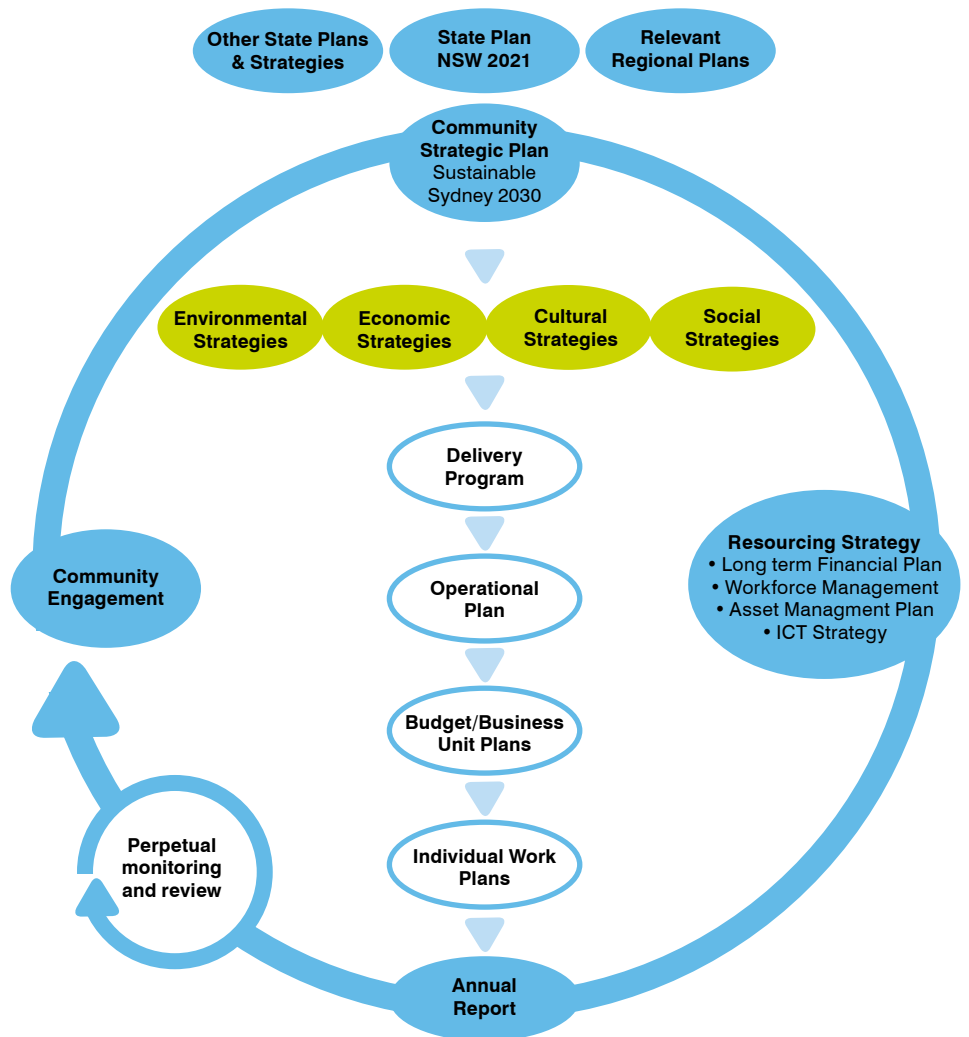


About the City of Sydney

The integrated planning and reporting framework

The integrated planning and reporting framework for NSW Local Government Council's was introduced by the NSW State Government in 2009. These reforms of the Local Government Act 1993 replace the former management plan and social plan structures.

The City of Sydney's response to this statutory framework for planning and reporting is embodied in a suite of integrated planning documents, as shown opposite.



Integrated Planning and Report Framework: Adapted from the Office of Local Government NSW Guidelines and available at dlg.nsw.gov.au

About the City of Sydney

An ongoing program to achieve a green, global, connected city

Sustainable Sydney 2030, as the community strategic plan, is an ongoing commitment by the City of Sydney to achieve the vision and targets set out for a green, global, connected city.

Aligning council's program and operations

The City of Sydney's four-year delivery program identifies the actions to deliver the long-term goals and outcomes specified under each strategic direction in Sustainable Sydney 2030. From this program, the operational plan is derived as an annual instalment, which also includes the detailed budget and revenue policy.

Resourcing the plan

To support the community's objectives expressed in Sustainable Sydney 2030, a long-term resourcing strategy is required as part of the integrated planning and reporting framework. This serves to both inform and test the aspirations expressed in the strategic plan and how the City's share of the required actions might be achieved.

The resourcing strategy includes four components:

- Long-term financial plan;
- Workforce strategy;
- Asset management strategy; and
- Information and communication technology strategic plan.

Costs for the principal activities undertaken by the City of Sydney under Sustainable Sydney 2030, including the continued provision of current services at the appropriate levels necessary to meet the objectives of the community strategic plan, are brought together in the long-term financial plan. This provides a 10-year view of the costs and what can be funded by the City of Sydney.

The City of Sydney's workforce capacity to meet the objectives of the Sustainable Sydney 2030 and the broad challenges and responses to planning our future workforce are outlined in the workforce strategy.

Asset management is a critical area of local government responsibilities, governed by legislated standards. The status, needs and resourcing plan for each key asset area in the City's care are shown through the Asset Management Strategy.

The Information, Communication and Technology (ICT) plan establishes a roadmap to ensure that ICT facilities, initiatives and resourcing are aligned with the strategic goals of the organisation.

The plan will provide a framework for the City's business units to develop, upgrade and transform the nature and substance of services to clients and communities in order to deliver on Sustainable Sydney 2030 outcomes and targets.

Monitoring progress

Monitoring for a sustainable Sydney is a multi-layered process. Sustainable Sydney 2030, as the community strategic plan, requires a monitoring report against broad sustainability indicators for the community and area as a whole.

The delivery program and annual operational plan are monitored through half yearly, annual and four yearly performance reports and quarterly and yearly financial reports to Council.

The City has also undertaken a major project to establish a comprehensive set of community wellbeing indicators that measure progress across social, cultural, environmental, economic and democratic perspectives.

The annual community indicators add a further dimension to monitoring and reporting on Sustainable Sydney 2030 and to the evidence base for integrated planning and reporting.

About the City of Sydney

Strategic Directions – Sustainable Sydney 2030

Strategic Direction 1 – A globally competitive and innovative city

Keeping Sydney globally competitive is central to Sydney's and Australia's future. The City must focus on the global economy and sustained innovation to ensure continuing prosperity.

Strategic Direction 2 – A leading environmental performer

The City of Sydney has adopted ambitious greenhouse gas emission reduction targets and will work towards a sustainable future for the City's use of water, energy and waste.

Strategic Direction 3 – Integrated transport for a connected city

Quality transport will be a major driver to sustainability – the City must offer a variety of effective and affordable transport options.

Strategic Direction 4 – A city for walking and cycling

A safe and attractive walking and cycling network linking the City's streets, parks and open spaces.

Strategic Direction 5 – A lively and engaging city centre

The city centre's international iconic status will be maintained and enriched with an inviting streetscape and vibrant public spaces.

Strategic Direction 6 – Vibrant local communities and economies

Building communities and local economies by supporting diversity and innovation in the City's 10 Villages.

Strategic Direction 7 – A cultural and creative city

A creative life where people can share traditions and lifestyles – celebrating Aboriginal and Torres Strait Islander culture, diversity and community.

Strategic Direction 8 – Housing for a diverse population

A wider range of housing so people who provide vital City services can afford to live in the City.

Strategic Direction 9 – Sustainable development renewal and design

High quality urban design will bring liveability and greater sustainability.

Strategic Direction 10 – Implementation through effective governance and partnerships

Partnerships across government, business and community; leadership in local, national and global city forums.

Legislative requirements

Local Government Act 1993 No.30

s428 (1) Preparation of report

An assessment of City's performance for the year 2014/15 with respect to the objectives and targets set out in its delivery program is presented in the supporting document on the Annual Reporting page of the website at cityofsydney.nsw.gov.au (see Operational Plan Q4 Report).

s428 (2) Inclusion of end-of-term report

The end-of-term report is not required to be developed in this reporting period. The previous end-of-term report was published in the 2011/12 reporting period and is available at cityofsydney.nsw.gov.au

s428 (3) Preparation of report

This annual report has been developed in accordance with the guidelines referred to in the *Local Government Act 1993*, *s406 Integrated Planning and Reporting Guidelines* and the *Local Government (General) Regulation 2005*, s217.

An online version of the City of Sydney Annual Report has been provided to the Minister for Local Government.

s428 (4) (a) Financial statements

The City of Sydney's audited financial reports for the 2014/15 financial year is presented in the supporting document on the Annual Reporting page of the website at cityofsydney.nsw.gov.au (see General Purpose Financial Statements and Special Purpose Financial Statements).

s428 (4) (b) Other information

This report includes other information as per the *Integrated Planning and Reporting Guidelines*, the *Local Government Act 1993* and other requirements

s428 (5) Send to the Minister

A copy of the annual report has been placed on cityofsydney.nsw.gov.au, and a link provided to the Minister.

Local Government (General) Regulation 2005 Part 5

Clause 132 Rates and charges written off

The following rates and charges were written off during the year:

Written off under s575 LGA 1993

Mandatory pensioner rates and charge reduction*	\$683,021
---	-----------

Written-off under s583 LGA 1993

Current pensioner rates and charges written-off	\$2,394,523
	\$3,077,544

Written off under s595 LGA 1993

Postponed rates written off	\$8,252
-----------------------------	---------

Written off under s607 LGA 1993

Rates doubtful debts written off	\$-
Small balances written off	\$3,546
	\$11,798

Total	\$3,089,342
--------------	--------------------

* An amount of \$375,662, representing 55 per cent of the mandatory pensioner reduction, is subsidised by the state government.

Legislative Requirements

Clause 217 (1) (a) Overseas visits

Details of overseas visits undertaken during the year by Councillors, council staff and other persons representing the City (including visits sponsored by other organisations) are provided below:

Overseas travel undertaken by officers representing the City in 2014/15

Purpose of travel	Destination	Officer	Date	Costs met by the City
International Study Tour on Cycling Influentials Program	Amsterdam	Fiona Campbell, Cycling Manager	Sep 2014	Airfares and incidentals
Green Growth Network Workshop	Copenhagen	Andrea Beattie, Executive Manager Research, Strategy & Corporate Planning	Oct 2014	Airfares, incidentals and partial cost of accommodation
Smart City Expo World Congress	Barcelona	Andrea Beattie, Executive Manager Research, Strategy & Corporate Planning	Nov 2014	Incidentals
Guest speaker at the World Future Energy Summit	Abu Dhabi	Chris Derksema, Sustainability Director	Jan 2015	Incidentals
Invited keynote speaker at Drive Electric Conference and Auckland Transport Forum	Auckland	Chris Binns, Manager Strategy and Assets	Apr 2015	Nil
Urban Sustainability Directors Network and the C40 Carbon Neutral Cities Alliances' 2nd Annual Meeting	Vancouver	Chris Derksema, Sustainability Director	May 2015	Incidentals and partial cost of airfares and accommodation
Guest speaker at the New Zealand Recreation Association 'Green Pavlova' Conference	Auckland	Damon La'Rance, Project Manager Parks	Jun 2015	Nil
Guest speaker at the New Zealand Recreation Association 'Green Pavlova' Conference	Auckland	Fred Tilden, Parks Services Manager	Jun 2015	Nil

Clause 217 (1) (a1) Payment of expenses and provision of facilities during the year

The City of Sydney has in place a Councillors' Expenses Policy that governs the expenses paid and facilities provided to the Lord Mayor, Deputy Lord Mayor and Councillors in the discharge of their civic duties.

In 2014/15, the cost of expenses incurred by and facilities provided to City Councillors was \$3,340,929. This includes domestic travel expenses such as accommodation and registration fees for seminars and conferences, as well as office administration such as postage, meals and refreshments. It also includes staff salaries and salary on-costs totalling \$3,154,433.

Annual fees were paid to the Lord Mayor and Councillors as required by the Local Government Act 1993 and in accordance with the determination of the Local Government Remuneration Tribunal. A fee was also paid to the Deputy Lord Mayor. The Lord Mayor's annual fee (\$178,782 excluding the amount paid to the Deputy Lord Mayor) was paid in part to the Lord Mayor (50 per cent) and in part into the Lord Mayor's Salary Trust (50 per cent) which will issue grants to charitable organisations as approved by the Trust.

In 2014/15, the total amount paid in respect of Councillors' fees and the Deputy Lord Mayor's fee (but excluding the Lord Mayor's fee) was \$376,078.

Details of particular categories of expenditure are as follows:

- (i) The cost of the provision of dedicated office equipment allocated to Councillors on a personal basis was \$4,195.
- (ii) Telephone calls made by Councillors, including mobile telephones provided by the Council and from the landline telephones and facsimile services installed in Councillors' homes totalled \$23,162.
- (iii) The cost of the attendance of Councillors at conferences and seminars was \$6,658.
- (iv) Expenditure on the training of Councillors and the provision of skill development for Councillors was \$8,271.
- (v) The cost of interstate visits undertaken by Councillors while representing Council, including the cost of transport, the cost of accommodation and other out-of-pocket travelling expenses was \$2,755.
- (vi) No overseas visits were undertaken by Councillors while representing Council.
- (vii) The expenses of any spouse, partner or other person who accompanied a Councillor in the performance of his or her civic functions, being expenses payable in accordance with guidelines for the payment of expenses and the provision of facilities for Mayors and Councillors for Local Councils in NSW, totalled \$469.
- (viii) The expenses involved in the provision of care for a child, or an immediate family member of a Councillor, to allow the Councillor to undertake his or her civic functions totalled \$3,773.

Clause 217 (1) (a2) Major contracts

The following are all the contracts awarded by the City during the year 2014/15 (whether as a result of tender or otherwise), other than:

- (i) employment contracts (that is, contracts of service but not contracts for services); and
- (ii) contracts for less than \$150,000 (including the name of the contractor and the nature of the goods or services supplied by the contractor and the total amount payable to the contractor under the contract).

Legislative Requirements

2014/15 contracts exceeding \$150,000 including GST, not including employment contracts

Successful contractor	Project description	Awarded amount (including GST)*
33 Creative Pty Ltd	NAIDOC Week Signature Event	\$462,000
A to B Wayfinding Pty Ltd	Legible Sydney Wayfinding Signage Implementation Documentation Packages (Placement and Messaging)	\$303,325
AB Industries	SAN Storage Capacity	\$314,132
AB Industries Pty Ltd	SAN Storage Upgrade – IBM v7000G2 Unified	\$505,428
Adbri Masonry Pty Ltd	Concrete Paver Supply	Schedule of Rates
Adtrans Hino Pty Ltd	Supply and Delivery of four Rear Loading 15 to 20m3 Garbage Compaction Trucks	\$2,461,926
AE Smith	Town Hall Trigeneneration Project Stage 1 (DBOM)	\$12,843,245
AECOM Australia Pty Ltd	Design Consultancy Panel for Public Domain Projects	Schedule of Rates
All Fab Australia Pty Ltd t/a Pattons Awnings	Marconi Terrace Marquee Structure Design and construction ongoing storage maintenance installation and removal	\$190,759
Ample Projects	Creative Services Specialist Panel	Schedule of Rates
Andrew Burges Architects	Green Square Aquatic Centre and Gunyama Park Design Competition Stage 2	\$7,150,000
Andrew Burns Architect	Hyde Park Cafe Architectural Structures in Heritage Parks Head Design Consultancy	\$215,523
AON Risk Services Australia Limited	Insurance Broking & Risk Services	\$2,441,722
Aquent LLC	Creative Services Specialist Panel	Schedule of Rates
Architectus Group Pty Ltd	Design Consultancy Panel for Public Domain Projects	Schedule of Rates
Artisan Recruitment	Creative Services Specialist Panel	Schedule of Rates
Asphalt Laying Services Pty Ltd	Asphalt Road Services	Schedule of Rates
Beresford Design	Creative Services Specialist Panel	Schedule of Rates
Bingo Recycling Group Pty Ltd	Disposal of Excavated Material	Schedule of Rates
Black Design (Rachel Black Design)	Creative Services Specialist Panel	Schedule of Rates
BlueCHP Limited	Harold Park Affordable Housing Site Sale	\$11,330,000
Buildmedia	Creative Services Specialist Panel	Schedule of Rates
BVN Architecture Pty Ltd	Design Consultancy Panel for Public Domain Projects	Schedule of Rates
CA&I Pty Ltd	Thomas Street and Hay Street, Haymarket – Public Domain Improvements	\$3,738,550
Caval Languages Direct	Library Materials – Languages other than English (LOTE), selection, cataloguing and end processing	Schedule of Rates
Celsius Fire Services Pty Ltd	Preventative and Reactive Maintenance of Fire Services	\$1,135,789
Challenge for Change	Workplace Cycling Promotion Program	\$322,543
Citywide Maintenance	Bourke Street Park Community Shed	\$209,000
Citywide Service Solutions Pty Ltd	Living Colour Floral Display Program	Schedule of Rates
Closed Loop Environmental Solutions Pty Ltd	Event Cleaning in Parks and Open Spaces	\$607,996

Legislative Requirements

2014/15 contracts exceeding \$150,000 including GST, not including employment contracts (continued)

Successful contractor	Project description	Awarded amount (including GST)*
Clouston Associates (Australia) Pty Ltd	Design Consultancy Panel for Public Domain Projects	Schedule of Rates
Complete Urban Pty Ltd	Design Consultancy Panel for Public Domain Projects	Schedule of Rates
Context Landscape Design Pty Ltd	Design Consultancy Panel for Public Domain Projects	Schedule of Rates
Conybears Morrison International Pty Ltd	Design Consultancy Panel for Public Domain Projects	Schedule of Rates
Cooper Commercial Constructions	Carpet, vinyl, underlay panel	Schedule of Rates
Corkery Consulting	Design Consultancy Panel for Public Domain Projects	Schedule of Rates
Creative Zoo	Creative Services Specialist Panel	Schedule of Rates
Customers 1 to 1	Call Centre Services – After Hours and Parking Ticket Machines	\$1,084,052
Danling Xiao	Creative Services Specialist panel	Schedule of Rates
Displaycraft Pty Ltd t/a Chas Clarkson	Christmas 2014 Christmas Trees and Decorations	\$1,077,036
Downer EDI Works Pty Ltd	Asphalt Road Services	Schedule of Rates
Durbach Block Jaggers	Design Consultancy Panel for Public Domain Projects	Schedule of Rates
ECS Services Pty Ltd	Security, alarms, access control and CCTV Systems, Asset Renewal Program	\$195,062
Electra Lift Company Pty Ltd	Ian Thorpe Aquatic Centre Lift Upgrade	\$212,300
Emma Williams	Marketing Communications Panel	Schedule of Rates
ENESS Pty Ltd	Christmas Activation 2014 – Pitt Street Mall	\$274,940
Enigma Business Management	Managed Print Services	Schedule of Rates
Ernst & Young	Environmental Sustainability Program	\$354,506
Esem Projects	Creative Services Specialist panel	Schedule of Rates
Eventors Australia Pty Ltd	2014–2016 Sydney New Year's Eve Pirrama Park event management	\$445,500
Evolution Traffic Control	Traffic Control Services Panel	Schedule of Rates
FBI Recruitment	Creative Services Specialist panel	Schedule of Rates
Ford Civil Pty Ltd	Green Square Library and Plaza – Basement Shoring, Bulk Excavation and Remediation Works	\$10,943,994
Ford Civil Pty Ltd	Abercrombie Street, Bridge Street and Tank Stream Way Laneway Improvements	\$1,787,841
Gallagher Studio Pty Ltd	Design Consultancy Panel for Public Domain Projects	Schedule of Rates
Gallagher Studio Pty Ltd	Consultancy Services for the Burton and Palmer Streetscape Upgrade Project, Darlinghurst	\$240,851
Gehl Architects	Urban Design Advice	\$572,000
Glascott Landscape	East Sydney Small Parks Upgrade O'Brien's Lane	\$256,102
Gledhill Constructions Pty Ltd	Heffron Hall and Albert Sloss Reserve Upgrade	\$7,082,350
Gosford Quarries Pty Ltd	Sandstone Supply for kerbs	Schedule of Rates
Government NSW PW	Design Consultancy Panel for Public Domain Projects	Schedule of Rates
Group GSA Pty Ltd	Design Consultancy Panel for Public Domain Projects	Schedule of Rates

Legislative Requirements

2014/15 contracts exceeding \$150,000 including GST, not including employment contracts (continued)

Successful contractor	Project description	Awarded amount (including GST)*
Growthbuilt Pty Ltd	Juanita Nielsen Centre Upgrade	\$7,196,498
Hampton Bridge Pty Ltd t/a Adseal Group	82-106 Oxford Street Darlinghurst Rooftop Waterproofing and Remedial Roof Repairs	\$172,604
Hansen Yuncken	Child care centres at Sydney Park, Bourke Road Alexandria and The Crescent Annandale	\$11,519,626
Hany Armanious	Public Art City Centre – East-West Connectors – Stage 3	\$1,870,000
Hargraves Urban Pty Ltd	25-27 O'Connell Street Building Demolition and Landscape Works	\$305,656
Hargraves Urban Pty Ltd	Hyde Park – Archibald Fountain Tree Planting	\$621,070
Hargraves Urban Pty Ltd	Bourke Street Shared Path	\$3,062,677
Hassell	Design Consultancy Panel for Public Domain Projects	Schedule of Rates
Hetti Perkins	Eora Journey Curatorial Advisor	\$297,000
Hill Thalys Architecture	Design Consultancy Panel for Public Domain Projects	Schedule of Rates
Homann Constructions Pty Ltd	50 Glebe Street Adaptive Re-use of Former Shop as Community Room	\$232,045
Hub Street Equipment Pty Ltd	Manufacture and Supply of Smartpole Multi-Function Poles; Prototype, Manufacture and Supply of S3 Light Rail Smartpole Multi-Function Poles; and Industrial Design, Prototype, Manufacture and Supply of Pedestrian Poles	\$651,606
Immex Green Square Medical Treatment	Occupational Medical Provider	Schedule of Rates
Industrial Brushware Pty Ltd	Supply and Delivery of Road Vehicle Brooms, Brushes and Spare Parts	Schedule of Rates
Integra Water Treatment Solutions	Cooling tower cleaning and water testing and treatment	\$242,130
Iqon Pty Ltd	Green Square Child Care Centre Construction	\$5,969,652
Isobel Deane	Marketing Communications Panel	Schedule of Rates
ITS	Trenchless Pipeline Rehabilitation	\$315,259
James Mather Delaney Design Pty Ltd	Design Consultancy Services – The Crescent at Johnston's Creek, Glebe	\$743,655
James Mather Delaney Design Pty Ltd	South Sydney Hospital Site Administration Building Surrounds Public Domain Design Consultant Services	\$324,781
James Mather Delaney Design Pty Ltd	Design Consultancy Panel for Public Domain Projects	Schedule of Rates
Jane Irwin Landscape Architecture	Design Consultancy Panel for Public Domain Projects	Schedule of Rates
Jennifer Arkell	Marketing Communications Panel	Schedule of Rates
Joan-Maree Hargraves	Marketing Communications Panel	Schedule of Rates
Johnson Pilton Walker Pty Ltd	Design Consultancy Panel for Public Domain Projects	Schedule of Rates
Junya Ishigami	Public Art City Centre – George Street Spine – Stage 2	\$2,736,558
Kasha Tabaka	Marketing Communications Panel	Schedule of Rates
Katopa Holding Pty Ltd t/a CBD Mechanical Electrical	Building Management and Control Systems Term contract	\$444,007

Legislative Requirements

2014/15 contracts exceeding \$150,000 including GST, not including employment contracts (continued)

Successful contractor	Project description	Awarded amount (including GST)*
Katopa Holding Pty Ltd t/a CBD Mechanical Electrical	Preventative and Reactive Maintenance of Mechanical Services and Associated Equipment	\$4,168,006
Katopa Holdings Pty Ltd t/a CBD Electrical	Provision of Preventative and Reactive Electrical Maintenance	\$3,503,969
Kinesis Pty Ltd	Environmental Sustainability Program	\$346,504
Knockout Pest Control Pty Ltd	Pest Control Services	Schedule of Rates
Kylie Ann Wiik	Marketing Communications Panel	Schedule of Rates
Lara Wolski	Marketing Communications Panel	Schedule of Rates
MacDonald Johnston	Three Footway Sweeping Machines	\$561,747
Manja Hausdorf-Admason	Marketing Communications Panel	Schedule of Rates
Maria Fernanda Cardoso	Green Square Public Art for the Former Royal South Sydney Hospital	\$384,839
Martin Victor Pell t/a Sprout	Design Consultancy Panel for Public Domain Projects	Schedule of Rates
McGregor Coxall	Design Consultancy Panel for Public Domain Projects	Schedule of Rates
McGregor Westlake	Design Consultancy Panel for Public Domain Projects	Schedule of Rates
Messy Design	Creative Services Specialist panel	Schedule of Rates
Metalplaque Pty Ltd	Wayfinding Signage – Tactile Street Signs, Manufacture and Installation Services	\$343,202
Mindy Lee	Marketing Communications Panel	Schedule of Rates
MK Illuminations	Supply and Installation of Christmas Trees and Decorations 2015	\$875,021
Murphy McCarthy and Associates Pty Ltd	Beehive Building and William House Electrical Substation and Associated Building Works	\$743,063
Murphy's Construction Group Pty Ltd	56–78 Oxford Street, Darlinghurst – Fire Services Upgrade	\$632,825
Nakama	Marketing Communications Panel	Schedule of Rates
NBRS and Partners Pty Ltd	Design Consultancy Panel for Public Domain Projects	Schedule of Rates
Neeson Murcutt Architects Pty Ltd	Design Consultancy Panel for Public Domain Projects	Schedule of Rates
New Directions International Business Services	Essential Services Compliance and Auditing in Council Properties	\$448,371
Nina Serova	Marketing Communications Panel	Schedule of Rates
Oculus	Design Consultancy Panel for Public Domain Projects	Schedule of Rates
Optimal Storm Water Pty Ltd	Water Recycling Infrastructure Maintenance	\$663,406
Optimum Roads Pty Ltd	Asphalt Road Services	Schedule of Rates
Phillips Marler	Design Consultancy Panel for Public Domain Projects	Schedule of Rates
Postdigital	Creative Services Specialist panel	Schedule of Rates
Pricewaterhouse Coopers (PwC)	External Audit services 2015–2020	\$726,000
Pro Opt Pty Ltd	Community Sharps Bins Network	\$730,433
Propeller Graphics	Creative Services Specialist panel	Schedule of Rates
QMC Group	Broadway Cycle Link	\$3,132,800
Quad Services Pty Ltd	Cleaning and Hygiene Services	\$15,587,153
Regal Innovations Pty Ltd	Observatory Hill Park Pathway Works	\$363,425

Legislative Requirements

2014/15 contracts exceeding \$150,000 including GST, not including employment contracts (continued)

Successful contractor	Project description	Awarded amount (including GST)*
Rylepair Pty Ltd t/a B.S.B. Brushes and Signs	Supply and Delivery of Road Vehicle Brooms, Brushes and Spare Parts	Schedule of Rates
Safety Australia Group	WHS Consultancy Services for City Projects and Property	\$544,704
Sam the Paving Man	Pavers Cleaning, Sealing and Maintenance	\$601,629
Schwarze Industries Australia Pty Ltd	Supply and Delivery of Regenerative Air Roadway Sweepers	\$2,699,070
SEMA Operations	Provision of Services for Generation and Distribution of Application Notification letters and Rates/Installment Notices	Schedule of Rates
SITA Australia Pty Ltd	AWT processing of domestic waste	\$14,740,000
Site Group	Traffic Control Services Panel	Schedule of Rates
SKIDATA Australasia Pty Ltd	Comprehensive Service & Maintenance of the Goulburn Parking Station SKIDATA Equipment	\$250,021
SMI Group Pty Limited	King George V Recreation Centre Change Room Refurbishment	\$384,835
Soap Creative	Creative Services Specialist panel	Schedule of Rates
Spackman Mossop Michaels Pty Ltd	Design Consultancy Panel for Public Domain Projects	Schedule of Rates
Spackman Mossop Michaels Pty Ltd	Bourke Street Shared Path, Waterloo – Stage 2 – Documentation & Construction Stage Services	\$241,402
Stollznow Research	Events Market Research	\$169,648
Stone Mason and Artist Pty Ltd	Sandstone Supply for kerbs	Schedule of Rates
Sue Barnsley Design Pty Limited	Design Consultancy Panel for Public Domain Projects	Schedule of Rates
Sullivans Constructions	Carpet, Vinyl, Underlay Panel	Schedule of Rates
Sydney Civil Pty Ltd	Gas Lane Upgrade	\$567,399
Symple Creative	Creative Services Specialist panel	Schedule of Rates
Tempest Air Conditioning and Mechanical Pty Ltd	Customs House Smoke Exhaust Fan Upgrade and Other Misc Works	\$258,212
Tempest Solutions Air and Mechanical Pty Ltd	Andrew (Boy) Charlton Pool Boiler Upgrade	\$285,571
The Electric Canvas	Christmas 2014 Christmas Projections	\$275,000
The Electric Canvas	2015 Sydney Chinese New Year Twilight Parade – Building projections, lighting and visual design, equipment and services	\$189,970
The Electric Canvas	Christmas Projections Activation 2015	\$250,000
The Recruitment Business (Become)	Creative Services Specialist panel	Schedule of Rates
Thyssen Krupp Elevator Australia Pty Ltd	343 George Street Lift Modernisation	\$1,248,610
TMA Tech Pty Ltd	Comprehensive Service and Maintenance of the Kings Cross Parking Station Scheidt and Bachmann Equipment	\$162,077
Tracey Emin	Public Art City Centre – East-West Connectors – Stage 2	\$912,317
Tract Consultants	King St Cycleway Stage 2 – Design Consultancy	\$397,095
Tract Consultants	Design Consultancy Panel for Public Domain Projects	Schedule of Rates
Traffic Management Australia	Traffic Control Services Panel	Schedule of Rates

Legislative Requirements

2014/15 contracts exceeding \$150,000 including GST, not including employment contracts (continued)

Successful contractor	Project description	Awarded amount (including GST)*
Transpacific Cleanaway Pty Ltd	Trade Waste – Liquid (including Grease Traps and Wash Bay) Services for the City's Properties	\$261,231
Trinity Quality Interiors Pty Ltd	Paddington Library Refurbishment	\$426,720
Turf Design Studio & Environmental Partnership	Hyde Park – Implementation of Master Plan Works	\$551,172
Turner and Townsend	Gunyama Park and Green Square Aquatic Centre Cost Planning and Quantity Surveying Services	\$332,200
UAP Australia Pty Ltd t/a Urban Art Projects	Thomas Street, Haymarket Supply of Scholar Rocks and Moongate	\$482,732
Urbis Pty Ltd	2015 Late Night Management Area Research	\$484,968
URS Australia Pty Ltd	Consultancy Services for Light Rail Engineering Advice	Schedule of Rates
We are Province	Creative Services Specialist panel	Schedule of Rates
Whale Design	Creative Services Specialist panel	Schedule of Rates
Wilson Pedersen Landscapes Pty Ltd	Reconciliation Park Redfern Upgrade	\$660,106
Wilson Pedersen Landscapes Pty Ltd	John Street Reserve Retaining Wall Works	\$317,394
Wilson Pedersen Landscapes Pty Ltd	Chelsea Street Playground Improvement	\$603,581
Wilson Pederson Landscapes Pty Ltd	Quarry Green Upgrade	\$920,961
WMA Water Pty Ltd	Sydney City Catchments Floodplain Risk Management Studies and Plans Darling Harbour and City Areas	\$194,590
Yudhi Sutjiawan	Creative Services Specialist panel	Schedule of Rates
Zoo	Creative Services Specialist panel	Schedule of Rates
Zoodio	Creative Services Specialist panel	Schedule of Rates

Note: Contracts awarded under a schedule of rates have no fixed lump sum amount with services provided as required within the approved budget for that service.

Legislative Requirements

2014/15 organisations providing goods and services exceeding \$150,000

Company name	Goods and services type	Value (incl GST)	Number of purchase orders/invoices
Aerocom Technology Pty Ltd **	Computer Software	\$638,516	2
Allcom Networks Pty Ltd	Computer Software	\$710,627	24
Altus Group Cost Management Pty Ltd	Quantity Surveying Services	\$282,735	25
Aquenta Consulting	Quantity Surveying Services	\$164,634	17
Australia Post	Mailing Services	\$931,047	49
Barloworld Volkswagon *	Motor Vehicle Supply/Maintenance	\$782,021	27
Blue Visions Management	Project Management	\$424,105	2
Bridgestone Australia Ltd	Tyre Supply	\$203,075	4
Bucher Municipal Pty Ltd	Footway Sweeper Machine/ Maintenance	\$504,187	14
Cabcharge Aust Pty Ltd	Transport Cost	\$187,787	13
Cardno (NSW/ACT) Pty Ltd	Environmental Consultants	\$172,635	2
Coates Hire	Equipment Hire	\$286,193	21
Complete Urban Solutions	Project Management	\$162,742	4
Database Consultants Australia	Computer Software	\$206,225	6
Data#3 Limited**	Computer Software	\$1,271,102	30
Dell Australia Pty Ltd**	Computer Equipment	\$905,163	49
Department of Finance & Services	Yellowblock sandstone	\$200,770	3
Draftwork Events	Audiovisual Production Hire	\$186,608	39
FBI Recruitment	Agency Staff	\$171,683	13
Fujitsu Australia Limited**	Computer Software	\$1,073,754	7
Fulton Hogan Construction Pty Ltd*	Materials for Roadways & Footways	\$371,554	4
Garwood International Pty Ltd **	Rearload Garbage Compactor bodies (x 5)	\$637,456	1
Grant Fyvie Electrical Pty Ltd	Electrical Services	\$224,434	18
Herkes Electrical Supplies Pty Ltd	Electrical Services	\$199,138	18
Hewlett Packard Aust Ltd	Computer Equipment	\$162,962	6
International Conservation Services P/L	Conservation works	\$176,092	11
Invictus Management Pty Ltd	Project Management	\$182,210	5
Jand Pty Ltd	Manufacture of Audio, Lighting and Staging	\$386,680	13
Lumley General Insurance Ltd	Insurance	\$328,545	10
MBMPL Pty Ltd	Quantity Surveying Services	\$157,669	19
Megadeck Australia Pty Ltd	Staging Systems	\$158,781	12
Metropolitan Gardens	Turfing	\$372,500	86
Optus Billing Services Pty Ltd	Telephone Services	\$163,961	10
Park Pty Ltd *	Bulk Fuel	\$1,000,237	4

Legislative Requirements

2014/15 organisations providing goods and services exceeding \$150,000 (continued)

Company name	Goods and services type	Value (incl GST)	Number of purchase orders/ invoices
QBE Insurance (Australia) Limited	Insurance	\$311,232	11
SGS Economics and Planning Pty Ltd	Planning Consultants	\$291,242	10
Skyhigh Traffic Data Australia Pty Ltd	Traffic Counts/ Surveys	\$202,787	16
Stillwell Trucks Pty Ltd *	Cab/Chassis Supply and Maintenance	\$514,485	14
Sullivans Constructions	Construction Services	\$196,479	8
Suttons City Holden *	Motor Vehicle Supply/Maintenance	\$413,298	12
Sutton Motors Arncliffe Pty Ltd *	Motor Vehicle Supply/Maintenance	\$534,445	21
Sydney City Toyota *	Motor Vehicle Supply/Maintenance	\$865,057	28
Telstra	Telephone Services/ Pit Services	\$1,869,764	2724
Ungerboeck Systems International Pty Ltd	Software License	\$154,356	4
Urbis Pty Ltd	Planning Consultants	\$325,320	7
Urban Walkabout	Digital & Print Publisher	\$180,741	26
University of Technology Sydney	Project Research	\$259,630	16
Viva Energy Australia Ltd *	Shell Fuel Card	\$357,421	1
Vuki Engineering	Engineering Services	\$173,913	47
Whirlwind Graffiti Service	Graffiti Removal / Cleaning Service	\$157,091	13

* Jobs awarded through State Government contract.

** Jobs awarded through Local Government Procurement Vendor Panel

Note: The value of goods and services given is based on purchase orders/Invoices listed for the 2014/15 financial year. The number of orders/Invoices is given to indicate the number of jobs.

Legislative Requirements

Clause 217 (1) (a3) Legal proceedings

In 2014/15, expenses incurred by the City of Sydney in relation to legal proceedings taken by or against the council (including amounts, costs and expenses paid or received by way of out of court settlements, other than those the terms of which are not to be disclosed) were as follows:

• amounts paid in respect of proceedings:	\$2,102,726
• costs received in respect of proceedings:	\$671,043
• amounts paid in out-of-court settlements:	\$98,234
• amounts received in out-of-court settlements:	\$0

The following is a summary of the state of progress of each legal proceeding and (if it has been finalised) the result.

Enforcement

Enforcement proceedings include civil or criminal enforcement proceedings commenced by Council in the Land and Environment Court or Local Court. Generally, such proceedings will arise from a failure to obtain or comply with development approval or a failure to comply with an order issued by Council. Some examples include unauthorised works or unauthorised uses of land or failure to comply with an order such as an order to upgrade fire safety. Council also initiates food safety prosecutions in relation to unhealthy food premises.

Appeals against orders issued by Council

When Council issues an order it may be challenged in the Land and Environment Court by the recipient. In 2014/15, five orders issued by Council were the subject of appeals to the Land and Environment Court. Five appeals were resolved in 2014/15. Of these three were discontinued and two were settled following a conciliation conference leading to amended orders. One appeal is yet to be finalised.

Civil Enforcement Proceedings

In 2014/15, Council commenced five civil enforcement proceedings in the Land and Environment Court seeking to either enforce a Council order or obtain an order from the Court requiring compliance with the *Environmental Planning and Assessment Act 1979*. The Court made orders as requested by Council in six cases in which Council was involved in 2014/15. Two civil enforcement proceedings were discontinued by Council. There are two cases yet to be finalised. No civil enforcement proceedings were dismissed by the Court.

Criminal Enforcement Proceedings

In 2014/15 Council commenced one criminal prosecution in the Land and Environment Court. The defendant was convicted and fined.

In 2014/15, Council was involved in 16 prosecutions in the Local Court as follows

- six prosecutions related to unhealthy food premises, and
- 10 prosecutions related to failure to comply with conditions of development consent.

In four of these prosecutions, the Court found the offence proven. Council withdrew six prosecutions. Six matters are not yet finalised

There were three appeals in 2014/15 to the District Court as to the severity of the penalty imposed in the Local Court. Two of these appeals were dismissed and one was discontinued by the appellant.

Enforcement of penalty notices

If the recipient of a penalty notice issued by a Council officer elects to dispute the matter in the Court, proceedings will be commenced in the Local Court in Council's name by the NSW State Debt Recovery Office and Council will be informed. For fines other than parking penalty notices, Council's Legal Services unit will review the penalty notice and if it appears to have been issued correctly, will continue the proceedings. If the penalty notice does not appear correct, Council will withdraw the proceedings. Local Court parking cases are dealt with by the Police Prosecutors except in exceptional circumstances and are not included in this report. In this financial year Council did not deal directly with any court elected penalty notices related to parking infringements.

In 2014/15, Council was involved in 41 cases where the recipient of a penalty notice (not parking) disputed the offence. Council withdrew 23 cases with the Court finding the offence proven in 17 cases. There was 1 case dismissed by the Local Court with no cases to be finalised.

Planning

Planning determinations of Council may be the subject of an appeal to the Land and Environment Court. Planning appeals arise from either a refusal (or deemed refusal) of consent by Council for a desired use or works at premises, or an appeal against conditions imposed on applicants as part of a development approval.

In 2014/15, 70 planning appeals were lodged in the Land and Environment Court against Council. There were 52 appeals finalised as follows:

- 15 appeals upheld by the Court in favour of the applicant on amended plans and conditions;
- 18 appeals were resolved by a s34 agreement on amended plans or amended conditions;
- 12 appeals were subsequently discontinued by the applicants; and
- seven appeals were dismissed in favour of Council.

There were 29 appeals yet to be finalised at the end of 2014/15.

If a party is dissatisfied with the outcome of a planning appeal it has a limited right of appeal to a Judge of the Land and Environment Court under s56A of the Land and Environment Court Act 1979. In 2014/15, Council was a party in one s56A appeal which was resolved in favour of the applicant.

In 2014/15 Council was a party to two appeals relating to a refusal to issue a building certificate. One of those matters was settled following a conciliation conference. The other matter was not finalised.

Other proceedings

High Court

The City was involved in one matter in the High Court of Australia in 2014/15, which was an application by a plaintiff for special leave to appeal against a decision of the Federal Court in Council's favour. Special leave to appeal was refused.

Supreme Court and Court of Appeal

Supreme Court proceedings can be brought by or against Council in a range of circumstances, e.g. contract disputes or negligence claims. In 2014/15, Council was engaged in one matter in relation to a contract dispute. The matter is not yet finalised.

There was one matter in 2014/15 where an appeal against a decision of a Judge of the Land and Environment Court was appealed to the Court of Appeal. That matter was discontinued by the applicant.

Land and Environment Court

In 2014/15, Council was involved in two cases where a decision of Council was challenged by a third party in the Land and Environment Court. In both cases, the proceedings were subsequently discontinued.

Council was also involved in one matter in Class 3 of the Court's jurisdiction where orders were sought seeking access to Council land for construction purposes. Access orders were made.

Local Court

In 2014/15 Council was involved in one case in the Local Court where an application was made seeking to revoke a dangerous dog declaration. The matter was discontinued by the applicant. Council was also involved in one case seeking to revoke a menacing dog declaration which was dismissed.

NSW Civil Administrative Tribunal

In 2014/15, Council was involved in four cases where the decision of Council to refuse access to documents and information pursuant to the *Government Information (Public Access) Act 2009* was challenged by an applicant. The applicants appealed to the NSW Civil Administrative Tribunal seeking a review of Council's decision. All of these matters were discontinued by the applicant.

Representations at Coronial Inquiries or Inquests

Council's lawyers represent Council where a coronial inquiry is held into a death in the local government area and Council's regulatory functions may be of interest to the coroner; for example if the person died due to a fault in the building or in a fire. In 2014/15, Council was involved in one coronial inquiry which was not finalised by the end of the year.

Rates Recovery

In 2014/15, Council was involved in 697 cases where action was taken to pursue recovery of outstanding rates by the commencement of proceedings. Of these, 436 cases were resolved either pre-judgment or by judgment being entered in favour of Council. 261 cases remain to be finalised.

Public Liability claims

In 2014/15, there were 11 cases where a claimant commenced proceedings against Council alleging negligence and seeking compensation for damage or injury. 14 litigated matters were resolved in 2014/15. Of these seven matters were settled in favour of the City, six were settled with negotiated settlements paid to the plaintiff and one matter was discontinued by the plaintiff. There are 16 cases yet to be finalised.

Clause 217 (1) (a4) Work on private land

No resolutions were made during the year 2014/15 under section 67 of the Act concerning work carried out by the City on private land.

Legislative Requirements

Clause 217 (1) (a5) Grants

The total amount contributed or otherwise granted by the City in 2014/15 under section s356 of the Act is as follows:

GRANTS 2014/15 – CASH SUMMARY AND VALUE IN KIND

	Cash	Value-in-kind
Community services grants	\$626,708	\$16,364
Cultural grants and sponsorships	\$682,800	\$178,624
Environmental grants	\$409,598	\$32,016
Environmental performance – innovation grant	\$97,000	–
Environmental performance – ratings and assessment grant	\$6,280	–
Environmental performance – building operations grant	\$5,000	–
Matching grants	\$432,217	\$7,932
Village business partnership grants	\$719,500	\$92,582
Quick response grants	\$15,440	–
Major festivals	\$785,000	\$432,000
Precinct festivals	\$90,000	\$17,300
Commercial creative and business events	\$55,000	\$185,000
Knowledge exchange sponsorship	\$155,000	\$72,900
Venue support – community venues	Nil	\$219,437
Venue support – major venues	Nil	\$336,373
Street banner sponsorship	Nil	\$244,773
History publications	\$49,994	–
Accommodation grants program – total value of grants approved in previous financial years for 2014/15	Nil	\$3,138,558
Outside grant program grants approved in 2014/15 and to be paid from 2014/15 financial year	\$83,000	\$160,000
Grants approved in previous financial years and to be paid from 2014/15 financial year (including major festivals and all multiyear grants approved prior to 2014/15)	\$3,575,685	\$1,481,241
Multiyear grants approved in 2014/15		
(figures relate to 2014/15 only)	\$1,248,500	–
Support for Humanitarian Aid	\$459,570	–
Totals	\$9,496,292	\$6,615,100
	Total Cash and Value in kind	\$16,111,392

Legislative Requirements

COMMUNITY SERVICES GRANTS

Organisation in application	Project name	Cash amount	Multi-year totals	Value-in-kind details
Asylum Seekers Centre Inc	Employment Assistance Service (EAS) Business Networks	\$20,000		
Australian Nursing Home Foundation	Living Longer and Happier	\$2,000		
Carers NSW	Carers Day Out	\$8,000		Banner hire waiver 0–25 banner poles up to the value of \$1,364
Centipede	Out-of-School Hour Care Programme	\$50,000		
City of Sydney NSW SES Unit	Fit for Task for the NSW SES volunteers	\$350		
Glebe Youth Services	After Dark Program	\$101,278	\$101,278 (Year 1 – 14/15) \$202,556 plus CPI (Year 2 – 15/16) \$202,556 plus CPI from 2015/16 (Year 3 – 16/17) \$101,278 plus CPI from 2015/16 and 2016/17 (Year 4 – July to December 2017)	Venue hire waiver for Peter Forsyth Auditorium of \$5,000
Good360 Australia Ltd	Good360 – 360 Degrees of Good	\$16,500		
Gunawirra	Gunawirra Assessment and Therapy Clinic	\$15,000	\$15,000 (Year 1 – 14/15) \$10,000 (Year 2 – 15/16) \$5,000 (Year 3 – 16/17)	
HopeStreet	HopeFul Beans	\$5,000		
Inner City Legal Centre	LGBTIQ Group Work Therapy – surviving domestic violence and social isolation	\$11,000		
Inner City Legal Centre	Printer/Photocopier for better client services	\$3,100		
Organisation Intersex International Australia Limited	Peer support and awareness raising	\$3,000		
Redfern Legal Centre	Boarders and Lodgers Legal Kit	\$12,000		
Redfern Legal Centre	International Students Legal Advice Service: awareness campaign	\$3,180		
Redfern Legal Centre	Extension of Millers Point tenant support and advocacy services	\$50,000		
REGENESIS	Regenesis Youth	\$15,000		
Salvation Army	Safe Space and Take Kare Ambassador Program	\$20,000	\$20,000 (Year 1 – 14/15) \$100,000 (Year 2 – 15/16) \$100,000 (Year 3 – 16/17) \$100,000 (Year 4 – 17/18)	
Salvation Army	Take Kare Ambassador program and Safe Space (pilot)	\$40,000		
Salvation Army	Extension of Safe Space Funding	\$37,500		

Legislative Requirements

COMMUNITY SERVICES GRANTS (continued)

Organisation in application	Project name	Cash amount	Multi-year totals	Value-in-kind details
Sydney Bingham Cup 2014 Incorporated	Bingham Cup 2014	\$15,000		Use of community transport buses including drivers for Bingham Cup 2014 valued at \$5,000
The Benevolent Society	A Taste of Sydney	\$22,300		
The Creativity Centre	Building Genuine Partnerships – How do you know what you want?	\$10,000		Community venue hire waiver up to the value of \$5,000
The Department P/L	The Spokes People Festival	\$30,000		
The Fact Tree Youth Service Inc	After Hours Program	\$70,000		
University of Sydney	Glebe Community Fete	\$6,500	\$6,500 (Year 1 – 14/15) \$3,000 (Year 2 – 15/16) \$2,000 (Year 3 – 16/17)	
Weave	Streetbeat afternoon and late night programs	\$60,000		
		\$626,708		\$16,364

CULTURAL GRANTS AND SPONSORSHIPS

Organisation in application	Project name	Cash amount	Multi-year totals	Value-in-kind details
10 Group	Interest Free Art Purchasing Scheme	\$60,000		–
Asian Australian Artists Association Inc	Mass Group Incident	\$30,000		–
Assisted Community Living Ltd	Gig Buddies Sydney Program	\$20,000		–
Band Association of New South Wales Inc.	2015 Centenary of ANZAC Australian National Band Championships	\$30,000		–
Chalk Urban Art Incorporated	Chalk Urban Art Festival	\$30,000		–
Chippendale Creative Precinct Incorporated	BEAMS Art Festival 2014	\$20,000		–
Dictionary of Sydney	Independent Review	\$20,000		–
First Draft Inc	Firstdraft Public Outreach Program	\$15,000		–
Force Majeure Ltd	Nothing to Lose	\$15,000		–
Griffin Theatre Company	Commissioning and Creative Development Program for Culturally Diverse Playwrights	\$20,000	\$20,000 (Year 1 – 14/15) \$15,000 (Year 2 – 15/16) \$10,000 (Year 3 – 16/17)	–
Head On Foundation Ltd	Head On Photo Festival	\$30,000		Venue hire waiver of Lower Town Hall up to the value of \$103,737
Idea Bombing Sydney (Auspiced by Object; Australian Design Centre)	Idea Bombing Sydney	\$8,750		–

Legislative Requirements

CULTURAL GRANTS AND SPONSORSHIPS (continued)

Organisation in application	Project name	Cash amount	Multi-year totals	Value-in-kind details
Inside There Falls Limited	Inside There Falls	\$20,000		–
International Performing Writers Association	Multilingual Poetry Slam: Workshop, Mentoring and Live Performance Project	\$8,000		Venue hire waiver of Customs House up to the value of \$3,500
	Banner pole hire waiver up to the value of \$4,091			
Joni Taylor Walczak (Auspiced by Office of Finance and Services)	The New landscapes Institute	\$15,000		–
Kinetic Energy Theatre Company	Kinetic Jazz	\$10,000		Venue hire waiver of Community Venue up to the value of \$6,000
Metro Screen Ltd	Film Festivals Australia	\$15,250	\$15,250 (Year 1 – 14/15) \$10,000 (Year 2 – 15/16) \$5,000 (Year 3 – 16/17)	–
Milk Crate Theatre	This House Is Mine	\$15,000		–
Mirabelle Wouters (Auspiced by Performing Lines Limited)	Artwork	\$10,000		–
Natalie Rose (Auspiced by Performing Lines Limited)	The Drawing	\$16,000		–
Newtown Neighbour-hood Centre, Inc	Newtown Festival	\$20,000		–
NSW Service for the Treatment and Rehabilitation of Torture and Trauma Survivors	Face to Face – Refugee Teenagers	\$20,000		–
Pinchgut Opera Ltd	Gluck's Iphigenie en Tauride	\$20,000		Venue hire waiver of City Recital Hall up to the value of \$10,000
places and spaces incorporated association	places + spaces presents	\$25,000		Venue hire waiver of Glebe Town Hall up to the value of \$1,825
Queer Screen Limited	Mardi Gras Film Festival	\$15,000		–
Rinse Out Inc	Underbelly Arts Lab & Festival	\$20,000		Venue hire waiver of Abraham Mott Hall up to the value of \$1,500
Screen Culture Association Inc	Antenna Documentary Festival 2014	\$20,000		–
Seymour Centre, University of Sydney	Courtyard Sessions, 2015 – 2017	\$15,000	\$15,000 (Year 1 – 14/15) \$10,000 (Year 2 – 15/16) \$10,000 (Year 3 – 16/17)	–
Surry Hills Neighbourhood Centre	Surry Hills Festival – Love and Tales of Surry Hills	\$30,000		–

Legislative Requirements

CULTURAL GRANTS AND SPONSORSHIPS (continued)

Organisation in application	Project name	Cash amount	Multi-year totals	Value-in-kind details
Sydney Fringe Festival	Pop-up theatres pilot project	\$24,800		–
Sydney Improved Music Association	Sydney International Women's Jazz Festival	\$25,000		–
Sydney Philharmonia Limited	ChorusOz 2015	\$15,000		–
The Twenty-Ten Association	Insight Out	\$10,000		–
University of New South Wales	Rectilinear Displacement	\$15,000		–
Value-in-kind only				
Australian Live Music Association	Rockstar Sydney	–		Venue hire waiver of Paddington Town Hall up to the value of \$10,225
Creativity Australia	With One Voice Redfern and supporting the disadvantaged in With One Voice Sydney	–		Banner pole hire waiver up to the value of \$5,454
Ensemble Offspring	Plunderphonia	–		Venue hire waiver of Community Venue up to the value of \$7,000
Greek Orthodox Community NSW	33rd Greek Festival of Sydney 2015	–		Venue hire waiver of Community Venue up to the value of \$5,000
History Council of NSW Inc.	History Week 2014 – The Great War	–		Venue hire waiver of Major and Community Venues up to the value of \$11,215
Nakkiah Lui (Auspiced by Auspicious Arts Projects Inc)	Blackie Blackie Brown: The Traditional Owner of Death	–		Banner pole hire waiver up to the value of \$2,727
Sydney Gay & Lesbian Choir	Cheek to Cheek: A Ballroom Fantasia	–		Venue hire waiver of Barnett Long Room up to the value of \$3,020
Sydney St Patrick's Day Organisation Incorporated	Sydney St Patrick's Day Parade & Family Day Workshop & Entertainment Project	–		Venue hire waiver of Community Venues up to the value of \$3,330
		\$682,800		\$178,624

Legislative Requirements

ENVIRONMENTAL GRANTS

Organisation in application	Project name	Cash amount	Value-in-kind details
Alternative Technology Association	Sunulator – Battery Storage Extension for Community Solar Feasibility	\$19,848	
C40 Cities Climate Leadership Group Inc	City of Sydney C40 City Advisor	\$166,000	Value-in-kind up to the value of \$30,000
C40 Cities Climate Leadership Group Inc	C40 Network Workshop	\$10,000	
Culture at Work	Blue Carbon: Creative Sparks	\$15,000	
Energy Efficiency Council	2014 Energy Efficiency Council National Conference	\$7,250	
Good360 Australia Ltd	Good360 – Better Buildings Partnership	\$44,997	
Green Strata Incorporated	NEW Green Strata resources to target strata residents and address sustainability inside apartments	\$20,000	
Nature Conservation Council of NSW	Growing Edible Gardens in Small Spaces	\$10,812	Community venue hire waiver up to the value of \$351
Preventive Research Collaboration, The University of Sydney	A community social marketing campaign to encourage greater use of City of Sydney cycleways	\$9,660	
The Bower Reuse & Repair Centre Co-operative Ltd	Household Items Re-homing Service Development Project 2014	\$28,000	
The Bower Re-use and Repair Centre Co-operative	Repair Cafe in Your 'Hood	\$12,090	
The Trustee for Australian Museum Trust	Understanding the Indian Myna	\$19,750	
Total Environment Centre Inc.	Ultimo-Pyrmont Business Sustainability Precinct – Pilot	\$21,191	
University of Sydney	Toward a pollinator friendly city	\$25,000	
Value-in-kind only			
Australian Youth Climate Coalition	2014 Youth Climate Leaders' Summit	\$0	Venue hire waiver of Redfern Town Hall up to the value of \$1,665
		\$409,598	\$32,016

Legislative Requirements

ENVIRONMENTAL PERFORMANCE – INNOVATION GRANT

Organisation in application	Project name	Cash amount
Investment Advantaged Software Pty Limited	Virtual Energy Assessments	\$10,000
Planet Ark Environmental Foundation	Coffee 4 Planet Ark	\$20,000
Strata Plan 68853	BotanyCope Solar	\$7,000
Sydney Renewable Power Company Limited	Sydney Renewable Power Company	\$40,000
Talent with Energy Pty Ltd	Bay St Depot Renewable Hydrogen Refuelling Station – Feasibility Study	\$20,000
		\$97,000

ENVIRONMENTAL PERFORMANCE – RATING AND ASSESSMENT GRANT

Organisation in application	Project name	Cash amount
Maps Hotels and Resorts Sydney 1 Pty Ltd	NABERS Energy Rating	\$3,350
Strata Plan 52659	Rockwall Apartments Energy Efficiency	\$1,610
The Trustees for Hunt's Service Trust	Hunt & Hunt	\$1,320
		\$6,280

ENVIRONMENTAL PERFORMANCE – BUILDING OPERATIONS GRANT

Organisation in application	Project name	Cash amount
Strata Plan 67253	Water sub-metering	\$5,000
		\$5,000

Legislative Requirements

MATCHING GRANTS

Organisation in application	Project name	Cash amount	Value-in-kind details
ALASKA Projects	ALASKA Music Program 2014/15	\$9,944	–
Alexandria Park Community School Parents and Citizens Association	Alexandria Park Community School Movie Night	\$1,500	–
Alexandria Residents Action Group	Alexandria Fair 2015	\$5,145	–
Anzac Day Dawn Service Trust Inc	2015 Anzac Day Dawn Service	\$20,000	–
Australian Theatre for Young People	ATYP Drama Workshop Access Scholarships	\$10,000	–
Big Hart Inc	Blue Angel – Sydney Stories of the Sea	\$3,100	–
Big Issue in Australia Limited	My Place: A Day in the Life of The Big Issue Vendors	\$6,774	–
Brendan Dobbie (auspiced by Bikesydney Advocacy Incorporated)	Ride to School Toolkit	\$450	–
Christmas in Pyrmont	Christmas in Pyrmont 2014	\$10,000	–
Cyclotron Bike Collective	Cyclotron Rides the Night	\$9,475	–
East Sydney Creative Paddington (auspiced by Australian Centre for Photography Limited)	Creative Village Paddington (working title)	\$8,627	–
Edwin Mcintosh (auspiced by the Glebe Society Inc)	Czech Philharmonic Children's Choir	\$6,000	Community Venue Hire waiver of Glebe Town Hall up to the value of \$315
Erskineville Public School P&C Association	Indigenous Welcome Garden	\$9,885	–
First Draft Incorporated	Firstdraft Community Courtyard	\$7,500	–
Friendship Bridge	Friendship Bridge	\$8,320	Community Venue Hire waiver of Green Square Community Hall up to the value of \$904
Fusion Culture Group	I Love Australia Exhibition & Celebration	\$10,000	–
Green Square Professional Networking Group	Green Square Professional Networking Group	\$1,483	–
Hello Bookcase (auspiced by Places and Spaces Incorporated)	Hello Library	\$4,500	–
Helluvan Collective (auspiced by National Association for the Visual Arts Ltd)	Helluvan Exhibition and Multi-Art Festival	\$6,000	–
In The Pipeline (Arts) Ltd	Hayes Theatre Co – Installation of Projector, Screen & Lighting Equipment	\$4,628	–
Indonesian Welfare Association Incorporated	2B Active & Fit	\$4,530	Venue hire waiver of Community Venues up to the value of \$820
Jane Parker (auspiced by Bikesydney Advocacy Inc)	Cyclehack Sydney	\$7,700	–
Kevin Bathman (auspiced by Groundswell Arts NSW Inc)	Carnival of the Bold 2015	\$4,380	–
Language Festival Association	Sydney International Language Festival 2015	\$1,090	Community Venue Hire waiver of Redfern Community Centre up to the value of \$410

Legislative Requirements

MATCHING GRANTS (continued)

Organisation in application	Project name	Cash amount	Value-in-kind details
Local Market Guide Pty Ltd	Markets in May	\$8,989	–
Mazi Mas	Mazi Mas training program and launch	\$7,500	–
Merry Makers Australia	Merry Makers Photo Exhibition	\$5,000	–
Millers Point Community Tennis Club Inc	Essence of Tennis – Tennis for Community and Life	\$9,930	–
National Centre of Indigenous Excellence Limited	Midnight Basketball Redfern	\$10,000	–
NSW Consumer Advisory Group – Mental Health Inc	Mad Pride Recovery in Art 2014	\$7,000	–
Oz Harvest Limited	Nourish Project	\$10,000	–
PACT Centre For Emerging Artists Incorporated	Rapid Response Team	\$10,000	–
Pets In The Park	Pets In The Park	\$10,000	–
Police Citizens Youth Clubs NSW Ltd	Through the Gap	\$10,000	–
Positive Life NSW Incorporated	The Quarterly	\$7,600	–
Red Line Productions Ltd	Late Night Shows	\$5,000	–
Redfern Legal Centre Ltd	Aboriginal Medical Legal Partnership	\$9,973	–
Revolve Training Pty Ltd	Revolve Wheelchair Bootcamp	\$7,479	Community Venue Hire waiver of King George V Recreation Centre up to the value of \$2,004
RoseBUG	RoseBUG	\$6,889	–
Royal Australian Historical Society	Exploring City of Sydney Life Between the Wars: the RAHS Osborne Photograph Collection (c.1920 – c.1939)	\$10,000	–
Squabballogic Independent Music Theatre Inc	Squabballogic Community Enhancement Project	\$5,100	–
St Johns Green (auspiced by Street Growth Incorporated)	St Johns Green	\$5,856	–
Swaz Pty Ltd (auspiced by the Glebe Chamber of Commerce Incorporated)	Workshops @ The Works	\$9,430	–
Sydney School of Arts & Humanities (auspiced by South Sydney Community Aid Co-op Ltd)	Life Writing Awareness	\$9,808	–
Sydney University Sport	Brydens Sydney Uni Flames Indigenous Program	\$6,800	–
Sydney Youth Orchestra Inc	Free Redfern Town Hall Toddlers Prom for Pre-School / Kindergarten Children and their Families	\$4,625	Community Venue Hire waiver of Redfern Town Hall up to the value of \$375
TAFE NSW Sydney Institute	Jones Street Mall Community Garden	\$8,000	–
The Alexandria Seniors' Writing Group	Sydney As It Was	\$6,000	–

Legislative Requirements

MATCHING GRANTS (continued)

Organisation in application	Project name	Cash amount	Value-in-kind details
The Factory Community Centre Inc	Cultural inclusion for families and children in early childhood	\$6,400	–
The Festivalists Ltd	Young at Heart Culture Club	\$5,000	Community Venue Hire waiver of Erskineville Town Hall up to the value of \$2,400
The Girls & Boys Brigade	Wonder 103	\$5,710	–
The Performance Space Ltd	Soapbox	\$5,040	–
The Redfern Project (auspiced by The Performance Space Ltd)	The Redfern Project	\$5,600	Community Venue Hire waiver of Redfern Town Hall up to the value of \$704
The Returned Service League of Australia (NSW Branch)	2015 Indigenous Veterans Affairs Commemoration Service	\$5,000	–
The Surry Hills Creative Precinct (auspiced by Australian Design Centre)	The Surry Hills Creative Precinct Research and Launch Event	\$10,000	–
The Tree Veneration Society	Green Square Place Making Project	\$5,000	–
Uca – The Mustard Seed Faith Community	Annual Community Events: Live Nativity and Anzac Day Service	\$5,500	–
University of New South Wales	Veloscape Exhibition & Bike Fair	\$8,397	–
Vibewire Youth Services Inc	Common Room 525	\$5,000	–
Walla Mulla Family and Community Support Ltd	Woolloomooloo NAIDOC Family Day 2015	\$10,000	–
Zli Construct Pty Ltd	Carousel	\$3,560	–
		\$432,217	\$7,932

Legislative Requirements

VILLAGE BUSINESS PARTNERSHIP GRANTS

Organisation	Cash amount	Value-in-kind details
Chippendale Creative Precinct Incorporated	\$72,500	Banner pole hire waiver up to the value of \$15,000
Glebe Chamber of Commerce Incorporated	\$80,000	Banner pole hire and venue hire of the Glebe Town Hall up to the value of \$16,000
Haymarket Chamber of Commerce Inc	\$74,000	–
Paddington Chamber of Commerce Inc trading as the Paddington Business Partnership	\$65,000	Banner pole hire waiver up to the value of \$223
Potts Point Partnership Incorporated	\$80,000	Banner pole hire waiver up to the value of \$11,000
Pymont Ultimo Chamber of Commerce and Industry Inc	\$80,000	Banner Pole Hire waiver up to the value of \$2,009
South Sydney Business Chamber	\$128,000	Value-in-kind of \$27,900 for banner pole hire, plus venue hire waiver of community venues up to the value of \$450
The Surry Hills Creative Precinct Inc	\$60,000	–
Walsh Bay Arts and Commerce Incorporated	\$80,000	Banner pole hire waiver up to the value of \$20,000
	\$719,500	\$92,582

QUICK RESPONSE GRANTS

Organisation	Project name	Cash amount
Gareth Ernst	Exhibition	\$500
Glebe Youth Service	Memorial Event Elizabeth Rooney	\$1,700
Holly Lawrence	Rowing	\$1,000
Lillian Silk	Stella Adler Summer Conservatory	\$500
Melinda Lyons	2015 NSWRL U17 Indigenous Youth Tour	\$500
Naomi Galley	Little Athletics New South Wales	\$500
Old Fitz Theatre – Red Line Productions (Creative Initiative)	Emergency Seating Requirements	\$2,000
People with Disability Australia Incorporated (Jodie Wilkins)	Mardi Gras	\$800
Readymade works	DANCEDENTS a multi-site dance festival	\$2,000
Redfern All Blacks Ladies Football Team	Rugby League Knockout	\$500
Robert Simpson	NSWRL U17 Indigenous Tour	\$500
Shantelle Fernando	NSW U/17's Indigenous Rugby League	\$500
Tessa Pang	Assistant Director to the Australian Delegation to The Hague International Model United Nations (THIMUN)	\$500
The Festivalists	Windows on Europe Film Festival Opening Night	\$940
Waterloo Storm Aboriginal Rugby League Club	Opening game of 2014 NSW Aboriginal State Rugby League Carnival	\$1,000
Woollahra Community Markets Inc	Paddington Art Market @ The Barracks	\$1,000
Wyanga Aboriginal Aged Care Program	Courtyard	\$1,000
		\$15,440

Legislative Requirements

MAJOR FESTIVALS

Organisation in application	Project name	Cash amount	Multi-year totals	Value-in-kind details
Bangarra Dance Theatre	Corroboree Festivals	\$100,000	\$100,000 (Year 1 – 14/15) \$100,000 (Year 2 – 15/16)	Indoor and outdoor wavier, venue hire and banner waiver up to the value of \$35,000
Gadigal Information Service Aboriginal Corporation	Yabun Festival	\$70,000	\$70,000 (Year 1 – 14/15) \$80,000 (Year 2 – 15/16) \$90,000 (Year 3 – 16/17)	Value-in-kind support up to the value of \$27,000
Sydney Gay and Lesbian Mardi Gras Ltd	Sydney Gay and Lesbian Mardi Gras	\$235,000	\$235,000 (Year 1 – 14/15) \$235,000 plus CPI (Year 2 – 15/16) \$90,000 plus CPI (Year 3 – 16/17)	Value-in-kind sponsorship to a value of up to \$260,000 per annum including banner pole hire, park hire of Victoria Park and landmark venue hire.
Sydney Gay and Lesbian Mardi Gras Ltd	Independent Review	\$20,000		
Sydney Writers' Festival Ltd	Sydney Writers' Festival Ltd	\$360,000	\$360,000 (Year 1 – 14/15) \$360,000 (Year 2 – 15/16) \$360,000 (Year 3 – 16/17)	Venue hire and banner pole hire waiver up to the value of \$110,000
			\$785,000	\$432,000

PRECINCT FESTIVALS

Organisation	Projects	Cash amount	Value-in-kind details
Glebe Chamber of Commerce	Glebe Street Fair	\$30,000	Banner pole hire waiver up to the value of \$12,300
Potts Point Partnership Incorporated	Kings Cross Festival	\$10,000	–
Pymont Ultimo Chamber of Commerce and Industry Incorporated	Pymont Festival of Wine Food and Art	\$50,000	Banner pole hire waiver up to the value of \$5,000
		\$90,000	\$17,300

COMMERCIAL CREATIVE AND BUSINESS EVENTS SPONSORSHIP

Organisation	Project name	Cash amount	Value-in-kind details
Destination NSW	Matilda The Musical	\$10,000	Value-in-kind (revenue forgone for access to City assets) of \$40,000, and inclusion in City of Sydney marketing, communications and engagement programs valued at \$100,000
Hannover Fairs Australia Pty Ltd	CeBIT Australia 2015–2017	\$35,000	Venue hire and banner pole hire waiver up to the value of \$15,000
International Management Group of America Pty Ltd (trading as IMG Fashion)	Mercedes-Benz Fashion Festival Sydney 2015	\$10,000	Use of Town Hall (venue hire only), marketing and banner pole hire waiver up to the value of \$30,000
		\$55,000	\$185,000

KNOWLEDGE EXCHANGE SPONSORSHIP

Organisation	Project name	Cash amount	Value-in-kind details
Australasian Performing Right Association Limited	Live Music Programming Advisor	\$35,000	–
AustraliaChina.org Pty Ltd	2015 China Australia Millennial Project	\$0	Major venue hire waiver up to the value of \$22,900
CultureLabel.com	REMIX Sydney 2015	\$40,000	Major venue hire waiver up to the value of \$45,000
International Association of Public Participation Australasia (IAP2)	2014 Australasian Leadership Conference	\$10,000	–
Springboard Enterprises Australia Ltd	Springboard Australia Accelerator Program	\$25,000	Major venue hire waiver up to the value of \$5,000
Third Spaces Group	Global Coworking Unconference Conference (GCUC) Australia 2015	\$10,000	–
University of Sydney	Sydney China Business Forum	\$35,000	–
		\$155,000	\$72,900

Legislative Requirements

VENUE SUPPORT GRANT – COMMUNITY VENUES

Organisation	Project	Value-in-kind
Al-Anon Glebe	Weekly support meeting	\$942
Glebe Art Show Committee	Book Sale	\$730
Glebe Girl Guides	Weekly Meetings	\$258
Glebe Society – WW1 Exhibition	Exhibition	\$6,054
Indonesian Welfare Association	Social and healthy living activities for the Indonesian community	\$8,127
Ironwood Chamber Ensemble 2015	Concert Series	\$2,342
Joyce Stevens Memorial	Memorial Event	\$135
Newtown Swans	Fundraiser	\$650
Old Friends Singers Group	Social and healthy living activities for Over 55s – Indo-Chinese	\$4,524
Older Women's Network	Weekly activities for Over 55s	\$6,750
South Sydney Community Aid	Activities for culturally and linguistically diverse community	\$22,330
Support Opportunity and Care Incorporated	Healthy lifestyle classes	\$708
Sydney UA3_Music Matters 2015	Education for over 55s	\$807
The Bower	Recycling workshops	\$119
The Bower	Recycling workshops	\$212
The Bower	Recycling workshops	\$190
Adult Migrant Education Program	Weekly adult education class	\$1,320
Al-Anon Newtown	Weekly support meeting	\$786
Artefact	Rehearsals – Site & Sound Festival	\$400
Asylum Seeker Centre	Volunteer training	\$150
Augustine Fellowship	Augustine Fellowship convention	\$940
Augustine Fellowship	Weekly support group meeting	\$572
Augustine Fellowship (Glebe)	Weekly support group	\$473
Augustine Fellowship (Newtown)	Weekly meetings	\$780
Australia China Cultural Friendship Association	Activities for culturally and linguistically diverse community	\$15,000
Balmain South Sydney Cricket Club	Presentation evening	\$1,105
Carer's Assist Ultimo Community Centre	Training	\$792
City East Community College	Adult migrant education program	\$1,848
City East Community College	Adult education	\$1,100
Crystal Meth Anonymous	Annual conference	\$671
Crystal Meth Anonymous Unity Day	Crystal Meth Anon support event	\$575
David Zhang Juvenile Diabetes Research Foundation May 2014	Fundraising event	\$186
Dictionary of Sydney	Meetings	\$384
Dzogchen Community of Namgyalgar Sydney	Meditation dance	\$150
Eastern Sydney Multicultural Access Project	Activities for culturally and linguistically diverse community	\$4,800
Eastern Sydney Multicultural Access Project – Indonesian Group	Social and healthy living activities for Indonesian community	\$4,377

Legislative Requirements

VENUE SUPPORT GRANT – COMMUNITY VENUES (continued)

Organisation	Project	Value-in-kind
Eastern Sydney Multicultural Access Project 2015/16	Social and healthy living activities for the Vietnamese community	\$2,369
Fantazia Musical Theatre	Rehearsals	\$263
Friends of Erskineville Inc.	Monthly residents meeting	\$570
Girl Guides	Weekly meetings	\$258
Girl Guides Association	Weekly meetings	\$212
Glebe Art Show 2015	Annual art show	\$2,552
Glebe Art Show Committee	Glebe art show	\$3,488
Glebe Chamber of Commerce	Committee meetings (10)	\$467
Glebe Public School	After school basketball program	\$919
Gunawirra	Aboriginal Culture and Drama Project	\$170
Inner City Domestic Violence Action Group	Monthly meetings	\$447
Inner Sydney Regional Council for Social Development	Meeting space for public housing tenants	\$4,930
Japan Karate Association	Tri-weekly community martial arts classes	\$11,993
Kings Cross Community & Information Centre	Committee meeting	\$100
Kings Cross Community & Information Centre	Jewellery beading class	\$1,966
Kings Cross Community & Information Centre	Monthly management meetings	\$589
Kings Cross Police	Community safety meetings	\$342
Milk Crate Theatre	Rehearsals	\$4,500
Narcotics Anonymous	Weekly meetings	\$210
Narcotics Anonymous	Weekly meetings	\$253
Narcotics Anonymous	Weekly meetings	\$504
Narcotics Anonymous (Camperdown)	Weekly support group	\$689
North Shore Recreation Network In	Dance Classes for adults with Intellectual disabilities	\$2,925
NSW Quilter's Guild	Monthly quilting workshops	\$1,530
PACT Theatre	Tiny stadiums festival	\$2,388
PACT Theatre	Weekly rehearsals	\$2,126
Parkinson's NSW	Parkinson! – choir	\$2,720
Physical Disability Council NSW	Committee meetings	\$385
Pride History Group	Monthly committee meeting	\$276
Rainbow babies Playgroup	Weekly playgroup	\$1,500
Redfern Legal Centre	Volunteer training	\$900
Regenisis Youth	Drama workshops	\$400
Rotary Club of South Sydney	Green square markets	\$3,750
Sahaja Yoga	Weekly community yoga	\$2,590
Save the Children	Mobile playbus	\$1,800
Sebastian Zagarella	Exhibition	\$700

Legislative Requirements

VENUE SUPPORT GRANT – COMMUNITY VENUES (continued)

Organisation	Project	Value-in-kind
Seniors Association of the Spanish Inc.	Social and healthy living activities for the Spanish community	\$7,725
South Sydney Community Aid 2015–16	Social and healthy living activities Culturally and Linguistically Diverse community	\$28,124
South Sydney Island and New Zealand Group	Cultural activities and rehearsals	\$2,193
Sydney Bonsai Club 2015	Monthly bonsai class	\$341
Sydney City Bonsai Club	Monthly bonsai workshops	\$301
Sydney Gay & Lesbian Choir Inc	Rehearsals	\$1,344
Sydney Spanish Seniors Association Inc	Weekly activities for Spanish over 55s	\$5,000
Sydney U3A	Education for over 55s	\$440
Sydney U3A	Education for over 55s	\$789
Sydney UA3 (University of Third Age)	Deconstructing art – education for over 55s	\$1,219
Sydney UA3 (University of Third Age)	Film appreciation – education for over 55s	\$935
Sydney Youth Orchestra	Toddler's prom	\$505
The Bower	Recycling workshops	\$125
The Dictionary of Sydney Group	Meeting	\$125
The Glebe Society Inc	Monthly management meetings	\$1,605
The Glebe Society Inc	Public meeting	\$63
The Glebe Society Inc	Monthly committee meeting	\$2,077
The Society of Arts & Crafts	Annual general meeting	\$163
Tranby Aboriginal College	Graduation event	\$169
Vietnamese Women's Group	Activities for culturally and linguistically diverse community	\$3,840
Vietnamese Women's Group, Meetings	Social and healthy living activities for Vietnamese community	\$4,100
Holistic Emotional Support Group	Support group for women recovering from abuse	\$572
Women in Film & Television	Monthly committee meeting	\$1,028
Wrap With Love/Kings Cross Nitwits	Weekly social knitting group	\$3,588
		\$219,437

Legislative Requirements

VENUE SUPPORT GRANT – MAJOR VENUES

Organisation	Project	Value-in-kind
Alzheimer's Australia NSW	Alzheimer's Australia NSW 2015 Networking Event	\$927
Australia Oriental Media Buddhist Charity Association	Charity Gala Evening	\$4,915
Australian Association of Graduate Employers	The Big Meet	\$5,501
Australian Human Rights Commission	RightsTalk: Your Australians of the Year 2015	\$10,527
Australian Institute of Architects	2015 NSW Architecture Awards	\$3,068
Australian Institute of Environmental Accounting Inc	AIEA Conference 2015	\$1,134
Australian Interactive Media Industry Association	21st AIMIA Awards	\$3,364
Australian Voice Association	Sing it Sydney World Voice Day Concert	\$2,983
B Lab Australia & New Zealand	Launch of B Corporations in Australia	\$515
Cancer Council Australia	Emerald and Ivy Ball	\$4,750
Celebrate African Australians Inc NSW	Celebrate African Australians NSW Nomination Awards 2014	\$3,000
Chinese Language Teachers Association of NSW	Chinese Language Spectacular	\$4,915
Environmental Defenders Office	30th Anniversary	\$515
Fitted for Work	Future of Social Inclusion	\$1,540
Generation Next	Mental Health and Wellbeing for Young People Seminar 2015	\$15,886
Hands Across the Water	A Night of Celebration	\$3,000
Jessie Street National Women's Library	Lunch Time Talks	\$1,659
Kolling Foundation	Winter Cancer Charity Ball	\$3,000
Korean Society of Sydney	70th Anniversary Independence Day of Korea Choir Concert	\$6,318
Mates in Construction	Hutchies Charity Night	\$3,000
Migration Institute of Australia	World Refugee Day – Community Forum	\$4,327
Multiple Sclerosis Ltd	MS Sydney to Wollongong Bike Ride Thank you function	\$1,503
Music Broadcasting Society of NSW Co-operative Ltd	40th Birthday of 1st FM Radio	\$3,673
NSWJBD Projects	70th Anniversary of Liberation – Holocaust Remembrance	\$5,514
Oasis Youth Support Network	Annual Oasis Charity Ball	\$12,000
Peter Pan Opportunity Committee	Peter Pan Fashion Fair	\$4,770
Peter Pan Opportunity Committee	Peter Pan Fashion Fair	\$6,341
Pont3 Pty on behalf of Athletics Australia	Blackmores Sydney Running Event	\$9,131
Public Education Foundation	Awards Ceremony	\$8,736
Radio Community Chest	Messiah	\$7,773
Rare Voices Australia Ltd	'The Forgotten Ones' Photographic Exhibition	\$1,238
Redkite	Redkite Corporate Quiz	\$3,600
St James Ethics Centre	Intelligence Squared Debate (IQ2)	\$20,815
St James Ethics Centre	Intelligence Squared Debate	\$8,326

Legislative Requirements

VENUE SUPPORT GRANT – MAJOR VENUES (continued)

Organisation	Project	Value-in-kind
Sydney Children's Hospital Foundation	Gold Dinner	\$6,032
Sydney Community Foundation	Maybanke Annual Lecture	\$1,544
Sydney Eisteddfod	Australian Choral Grand Prix	\$4,146
Sydney Gay & Lesbian Choir	Harvey Milk the Opera – In Concert	\$23,588
Sydney Homeless Connect	Homeless Connect 2015	\$38,005
Sydney Male Choir	Annual Concert	\$9,626
Sydney Metropolitan Church	Christmas Eve Carols service	\$15,909
Sydney Secondary College	Annual Presentation Day 2016	\$2,205
Sydney Youth Orchestra	Concert Subscription Series – Season Finale: Tchaikovsky Romeo and Juliet & Mahler Symphony No 5.	\$7,077
Sydney Youth Orchestra	Toddlers Proms	\$982
The Australian Museum	2015 Australian Museums Eureka Prizes Awards Dinner	\$7,323
The Dalai Lama in Australia	His Holiness the Dalai Lama's 80th Birthday	\$2,795
The Fred Hollows Foundation	Ethiopia Emergency Campaign Launch	\$2,818
The Occasional Performing Sinfonia	Celebration Sing Out	\$5,053
The Prince Charles Hospital Foundation	The Unforgettable Run Launch	\$2,273
The Sebastian Foundation	Carols in the City	\$5,080
United Way Australia	Back to School Formal	\$6,136
University of Technology Sydney	Lord Mayor's Welcome for International Students	\$12,000
YWCA NSW	The Mother of All Black and White Balls	\$5,517
		\$336,373

Legislative Requirements

STREET BANNER SPONSORSHIP

Organisation	Project	Value-in-kind
Alliance Francaise	French Film Festival	\$12,400
Art Gallery NSW	Archibald Prize 2015	\$8,442
Art Gallery of NSW	Pop to Popism	\$15,750
Australian Museum	Explorers Exhibition	\$20,088
Australian Museum	Wild Planet Exhibition	\$20,088
Bangarra Dance Company	lore	\$15,750
Brain Foundation	Brain Awareness Week	\$1,260
Cancer Council NSW	Daffodil Day 2015	\$6,300
Chinese Film Festival Inc	2015 5th Golden Koala Chinese Film Festival	\$12,400
Clean Up Australia Limited	Clean Up Australia Day 2015	\$12,400
Goethe Institute	Festival of German Films 2015	\$18,600
Kaldor Public Art Projects	Marina Abramovic: IN Residence	\$18,600
Korean Cultural Office	Korean Film Festival	\$1,376
Leukaemia Foundation	Light the Night	\$1,890
Moran Arts Foundation	2014 Moran Prizes Exhibition	\$3,360
Museum of Contemporary Art	Exhibition of Contemporary Art	\$9,450
National Art School	Saatchi & Saatchi – National Art School Graduate Exhibition	\$5,670
National Breast Cancer Foundation	Women In Super Mother's Day Classic (fun run)	\$2,709
Opera Australia	The Magic Flute	\$6,804
Opera Australia	Aida	\$8,946
Reserve Forces Day Council Inc	Reserve Forces Day Gallipoli Parade 2015	\$12,400
RSL Appeals NSW	Poppy Appeal – Remembrance Day	\$1,512
Sydney Dance Company	Frame of Mind Season in Sydney	\$7,068
Sydney Dance Company	Triptych	\$7,875
Sydney Living Museum	Sydney Open 2014	\$13,635
		\$244,773

Legislative Requirements

HISTORY PUBLICATION SPONSORSHIP

Organisation	Project name	Cash amount
Catherine Bishop	Not just pin money: Colonial businesswomen in Sydney	\$10,000
Dean Boyce	Invasion: colonial Sydney's fears of attack	\$12,000
Independent Scholars Association of Australia (NSW Chapter)	Gardens as history and imagination	\$10,000
James Colman	The house that Jack built	\$8,000
Peter Butt	Rogue bank: The rise and fall of the Nugan Hand Bank	\$9,994
		\$49,994

ACCOMMODATION GRANTS PROGRAM

Total value of grants approved in previous financial years for 2014/15

Organisation	Property address	Value-in-kind
107 Projects Incorp	107 Redfern St, Redfern	\$69,139
107 Projects Incorp – upstairs	107 Redfern St, Redfern	\$49,749
Asian Australian Artists Assoc	181–187 Hay Street Haymarket	\$110,839
Australian Design Centre	113–115 William St, Darlinghurst	\$71,119
Australian Guild of Screen Composers	50–58 Macleay Street Elizabeth Bay	\$1,931
Australian Screen Editors Inc	50–58 Macleay Street Elizabeth Bay	\$1,931
Beehive Industries Co-op	137 Palmer Street Darlinghurst	\$151,805
Big Fag Press	6 Chapman Road Annandale	\$1,417
Brand X Productions Incorporated	160 St Johns Road Glebe	\$22,259
Darlinghurst Theatre Company	249 Palmer Street Darlinghurst	\$111,264
Dept. of Ageing Disability & Home Care (Alleena Home Care)	12a Dadley Street Alexandria	\$20,076
East Sydney Community Based High School	73–75 William Street Darlinghurst	\$182,810
Eastern Respite and Recreation	78 Harcourt Parade Rosebery	\$30,424
First Draft Inc	13–17 Riley Street Woolloomooloo	\$63,888
Gay & Lesbian Rights Lobby	186–194 Glebe Point Road Glebe	\$15,240
Geoff holmes T/as Glebe Music Project	6 Chapman Road Annandale	\$7,086
Glebe Chamber of Commerce	186–194 Glebe Point Road Glebe	\$2,510
Glebe District Hockey Club Inc	6 Chapman Road Annandale	\$7,086
Glebe Junior Australian Football Club	6 Chapman Road Annandale	\$7,086
In the Pipeline (arts) Ltd	19 Greenknowe Street Elizabeth Bay	\$67,355
Inner City Legal Centre Limited	50–52 Darlinghurst Rd. Kings Cross	\$41,205
Inner Sydney Regional Council for social Development	770 Elizabeth street Waterloo	\$33,008
James Cahill Preschools	1–7 Ragan Street Waterloo	\$34,608
Jessie Street National Women's Library	40 William Henry Street (bounded by Harris & Bulwara) Ultimo	\$53,753
John J Carrol Pres School	2–14 Phelps Street Surry Hills	\$27,318
Kings Cross Community and Information Centre	50–58 Macleay Street Elizabeth Bay	\$17,980

Legislative Requirements

ACCOMMODATION GRANTS PROGRAM (continued)

Total value of grants approved in previous financial years for 2014/15

Organisation	Property address	Value-in-kind
KU Children's Services	247-257 Bulwara Road Ultimo	\$100,425
KU Children's Services – Lance Preschool	37 High Street Millers Point	\$62,211
KU Children's Services Rushcutters Bay Lease	Rushcutters Bay Park Waratah Street Rushcutters Bay Park	\$36,610
KU Frances Newton Kindergarten	222 Palmer Street Darlinghurst	\$14,491
KU Philip Park Children's Centre	2-10 Yurong Parkway Sydney	\$92,544
Local Health District – Carter Evans day care	8-10 Brown Street Newtown	\$1,604
Lois Barker Child Care	232 (102 Wellington) Pitt street Waterloo	\$107,764
Mandala Community Counselling Services Inc	40 William Henry Street (bounded by Harris & Bulwara) Ultimo	\$12,340
Maybanke Preschool	99 Harris Street Pyrmont	\$18,025
Metro Screen Limited	247 Oxford Street Paddington	\$48,832
Milk Crate Theatre	73 Garden Street Alexandria	\$931
Music council of Australia	104 Erskineville Road Erskineville	\$6,963
Neighbour Connections Inc	184 Glebe Point Road Glebe	\$2,513
Neighbour Connections Inc	184 Glebe Point Road Glebe	Nil
Older Woman's Network NSW	8-10 Victoria Street Newtown	\$36,951
PACT Theatre	107-125 Railway Parade (SES on same site) Erskineville	\$68,608
Physical Disability Council	184 Glebe Point Road Glebe	\$1,514
Pride History	186-194 Glebe Point Road Glebe	\$15,167
Protective Behaviours Consultancy	73 Garden Street Alexandria	\$1,798
Pyrmont Ultimo Glebe Mens Shed	6 Chapman Road Annandale	\$12,873
Radio Eastern Sydney Co-op	247 Oxford Street Paddington	\$22,333
Radio For the Print-handicapped of NSW	184 Glebe Point Road Glebe	\$20,860
Readymade Works Incorp	247-257 Bulwara Road Ultimo	\$29,474
Redfern Legal Centre	73 Pitt Street Redfern	\$60,965
Regenesis	2 Watsons Road Millers Point	\$2,704
Rinse Out Incorporated	3/60-70 Lower Ground Floor Strata William Street Sydney	\$26,455
Rosebery Child Care Inc	1 Harcourt Parade Rosebery	\$95,790
Screen Culture Association Inc	186-194 Glebe Point Road Glebe	\$1,433
SDN Children's Services – Pyrmont early childhood education centre	79a (entry off Mount Street) John Street Pyrmont	\$66,950
SDN Children's Services – Surry Hills Early Childhood education centre	443 Riley Street Surry Hills	\$150,638
South East Neighbourhood Centre	169 Victoria Street Beaconsfield	\$26,307
South Sydney Community Aid Co-op	73 Garden Street Alexandria	\$28,711
Sunbeam Kindergarten	8 Lynne Street Alexandria	\$26,677
Surry Hills Neighbourhood Centre	405 Crown Street Surry Hills	\$109,502

Legislative Requirements

ACCOMMODATION GRANTS PROGRAM (continued) Total value of grants approved in previous financial years for 2014/15

Organisation	Property address	Value-in-kind
Sydney Gay and Lesbian Choir	160 St Johns Road Glebe	\$3,999
Sydney Local Health District known as Glebe Early Childhood Centre	160 St Johns Road Glebe	\$40,325
The Bower Re-use & Repair Centre Co	107 Redfern St, Redfern	\$12,162
The Dictionary of Sydney	186–194 Glebe Point Road Glebe	\$15,656
The Festivalists Limited	104 Erskineville Road Erskineville	\$13,274
The Roman Catholic Church for The Archdiocese of Sydney	2–10 Yurong Parkway Sydney	\$26,784
The Sydney Childrens Hospital Network	19 Greenknowe Street Elizabeth Bay	Nil
The University of Sydney (occupied by Glebe Community Development	160 St Johns Road Glebe	\$54,065
The Womens Library Inc	8–10 Brown Street Newtown	\$35,458
Tom Bass Sculpture Studio School	1a Clara Street Erskineville	\$48,046
Tribal Warrior Assoc Inc	107 Redfern St, Redfern	\$25,833
UTS Childcare Inc	2–10 and 1–15 (on 2 blocks) Mary Ann and McKee Streets Ultimo	\$127,620
Vibewire Youth Services	40 William Henry Street (bounded by Harris & Bulwara) Ultimo	\$86,479
Weave Youth Family	Waterloo Oval Elizabeth & Allen Streets Waterloo	\$51,009
Women In film and Television Inc	50–58 Macleay Street Elizabeth Bay	\$1,931
Wrap with Love	4/4 Huntley St, Alexandria	\$32,782
Wulla Mulla Family and Community Support Ltd	19 Greenknowe Street Elizabeth Bay	\$49,284
		\$3,138,558

OUTSIDE GRANT PROGRAM GRANTS APPROVED IN 2014/15 AND TO BE PAID FROM 2014/15 FINANCIAL YEAR

Organisation	Projects	Cash amount	Value-in-kind details
AFC Asian Cup Australia 2015 Limited	Asian Football Confederation (AFC) Asian Cup Australia 2015	–	Value-in-kind for marketing support, cleansing, waste and venue hire up to the value of \$80,000
Destination New South Wales	ICC Cricket World Cup 2015	–	Value-in-kind for marketing and precinct activation support, cleansing, waste and venue hire up to the value of \$80,000
OzHarvest	OzHarvest 2015 CEO Cook-off	\$3,000	–
SOUTHS CARES	Live Site/Fan Day	\$60,000	–
Sydney Harbour Foreshore Authority (SHFA)	Community Festivals Pilot Project	\$20,000	–
		\$83,000	\$160,000

Legislative Requirements

GRANTS APPROVED IN PREVIOUS YEARS AND PAID IN THE 2014/15 (FIGURES RELATE TO 2014/15 ONLY)

Program	Organisation	Projects	Cash amount	Value-in-kind details
Commercial Creative and Business Events	IMG Fashion	Mercedes Benz Sydney Fashion Festival 2012, 2013 and 2014	\$20,000	Value-in-kind up to the value of \$50,000
Commercial Creative and Business Events	IMG Fashion	Mercedes-Benz Fashion Week Australia 2013–2015	\$65,000	Value-in-kind up to the value of \$35,000
Commercial Creative and Business Events	Vogue Australia	Vogue Fashion Night Out 2012, 2013 and 2014	\$40,000	Value-in-kind up to the value of \$30,000
Community Services Grants Program	Glebe Youth Service	After Dark Program, Case Worker/ Program Manager/Volunteer Coordinator/Community Development Worker, Food Program	\$86,325	Venue hire waiver for Peter Forsythe Auditorium up to \$2,500
Community Services Grants Program	Second Bite	Second Bite Fresh Nutrition Education and Food Mate Programs – Sydney Rollout	\$40,000	–
Community Services Grants Program	South Cares Public Benevolent Institution and Trust Ltd	ATP Redfern Harmony 9s	\$5,000	Park hire waiver of Redfern Oval for one day and venue hire waiver of the Long Room at Redfern Oval up to the value of \$1,500
Community Services Grants Program	Sydney Peace Foundation	Sydney Peace Prize	\$50,000	Major Venue Hire Waiver – 2 times per year up to a value of \$24,000. Banner Hire Waiver – up to \$42,000
Community Services Grants Program	Xanana Gusmao Reading Room	Reading Room Donation 2012–2017	\$20,000	–
Cultural and Creative Grants and Sponsorship Program	Archikidz! Australia	Archikidz!	\$20,000	Major venue hire waiver for 1 day up to the value of \$16,957 and subsequent CPI increases
Cultural and Creative Grants and Sponsorship Program	Australian Art Events Foundation (Art Month Sydney)	Art Month Sydney 2014–2016	\$50,000	Venue hire waiver up to \$50,000 per year and subsequent CPI increases. Banner pole hire waiver up to \$20,000 per year and subsequent CPI increases
Cultural and Creative Grants and Sponsorship Program	Babana Aboriginal Men's Group Inc.	Coloured Digger Anzac Event	\$5,000	Venue hire waiver for Redfern Community Centre x 1 day up to the value of \$165 per year and subsequent CPI increases. Banner pole hire waiver for 20 banners x 3 weeks up to the value of \$1,119 per year and subsequent CPI increases

Legislative Requirements

GRANTS APPROVED IN PREVIOUS YEARS AND PAID IN THE 2014/15 (FIGURES RELATE TO 2014/15 ONLY) (continued)

Program	Organisation	Projects	Cash amount	Value-in-kind details
Cultural and Creative Grants and Sponsorship Program	Belvoir	Belvoir's Mobile Captioning Initiative	\$15,000	–
Cultural and Creative Grants and Sponsorship Program	Dictionary of Sydney Trust	Dictionary of Sydney	\$200,000	Office Accommodation up to 2015 up to \$39,000 per annum – to a total of \$195,000
Cultural and Creative Grants and Sponsorship Program	Good Beginnings Australia	The Great Tribal Chase Annual Event 2014–2016	\$10,000	Venue hire waiver for Lower Town Hall up to the value of \$5,000 per year and subsequent CPI increases
Cultural and Creative Grants and Sponsorship Program	Kaldor Public Art Projects	Kaldor Public Art Projects – 2013/2014 to 2015/2016	\$100,000	–
Cultural and Creative Grants and Sponsorship Program	Sydney Arts Management Advisory Group (SAMAG)	Seminar Series 2012–2015	\$5,000	–
Cultural and Creative Grants and Sponsorship Program	Sydney Dance Company	Young Peoples Access Program	\$12,000	–
Cultural and Creative Grants and Sponsorship Program	The Glebe NAIDOC Committee	Glebe NAIDOC 2014–2016	\$10,000	–
Cultural and Creative Grants and Sponsorship Program	University of Sydney	Sydney Children's Festival	\$30,000	–
Cultural and Creative Grants and Sponsorship Program	University of Technology Sydney	Ultimo Science Festival 2013, 2014 and 2015	\$15,000	–
Environmental Grants	Queensland University of Technology	Australian Research Council Linkage Grant – Managing Creative Ecosystems: Urban Cultural Policy for the 21st Century	\$10,000	Value-in-kind up to the value of \$40,000 in the form of: staff time, provision of information and participation in the research each year
Major Festivals	Australia Council for the Arts	Independent Strategic Business Review of the Biennale of Sydney	\$20,000	–

Legislative Requirements

GRANTS APPROVED IN PREVIOUS YEARS AND PAID IN THE 2014/15 (FIGURES RELATE TO 2014/15 ONLY) (continued)

Program	Organisation	Projects	Cash amount	Value-in-kind details
Major Festivals	Australia Day Council of New South Wales	Australia Day 2014 & 2015	\$180,000	Banner pole hire waiver for up to four weeks up to a value of \$130,000 and public domain hire waiver for Hyde Park, Cathedral Square, Alfred Street and Queens Square up to a value of \$20,000 for 2014 & 2015. Venue hire waiver of Sydney Town Hall in 2014 & 2015 for one occasion up to the value of \$14,000
Major Festivals	Biennale of Sydney	Biennale of Sydney 2010, 2012, 2014	\$527,360	Venue hire waiver and banner pole hire waiver – up to \$50,000 for 2010 event (10/11), \$60,000 for 2012 event (12/13) and \$70,000 for 2014 event (14/15)
Major Festivals	Newtown Entertainment Precinct Association	Sydney Fringe Festival 2014–2016	\$180,000	Venue hire waiver and banner pole hire waiver up to \$50,000 per year for the 2014, 2015 and 2016 festivals
Major Festivals	Sydney Festival	Sydney Festival 2014–2016	\$1,500,000	Venue, park, open space and banner pole hire up to \$600,000 per year for three years
Major Festivals	Sydney Film Festival	Sydney Film Festival 2014–2016	\$250,000	Venue, park open space and banner pole hire up to \$200,000 per year for three years
Major Festivals	Sydney Living Museums	Independent Consultancy (Sydney Open)	\$30,000	–
Outside of Grant Program	Bicycle NSW	2014 Spring Cycle	\$30,000	–
Village Business Partnership Grant	Marrickville Council	Memorandum of Understanding – to fund Newtown business precinct management	\$50,000	Banner pole hire waiver – \$40,000 per year
			\$3,575,685	\$1,481,241

Legislative Requirements

MULTIYEAR GRANTS APPROVED IN 2014/15 AND TO BE PAID FROM 2014/15 FINANCIAL YEAR AND FUTURE FINANCIAL YEARS (CASH AMOUNT FIGURES RELATE TO 2014/15 ONLY)

Organisation	Projects	Cash amount	Multi-year totals
Centre for Local Government at the University of Technology, Sydney and the Graduate School of Government at the University of Sydney	An Exploration of the Wellbeing of International Students in the City of Sydney	\$20,000	\$20,000 (Year 1 – 14/15) \$20,000 (Year 2 – 15/16)
Department of Family and Community Services	Specialist Homelessness Services in Inner City Sydney	\$1,228,500	\$1,228,500 (Year 1 – 14/15) \$1,400,000 excluding GST (Year 2 – 15/16) plus CPI \$1,400,000 excluding GST plus CPI (Year 3 – 16/17)
		\$1,248,500	

SUPPORT FOR HUMANITARIAN AID

Organisation	Projects	Cash amount
Australian Red Cross	Cyclone Pam (Vanuatu) 2015 Appeal	\$200,000
Australian Red Cross	Matched component Staff contribution (Cyclone Pam (Vanuatu) 2015 Appeal)	\$7,895
Australian Red Cross	Nepal Region Earthquake 2015 Appeal	\$200,000
Australian Red Cross	Matched component Staff contribution (Nepal Region Earthquake 2015 Appeal)	\$21,675
Beyond Blue	Beyond Blue Ltd in memory of Tori Johnson	\$10,000
St Vincent de Paul Society	2015 Vinnies CEO Sleepout Appeal	\$10,000
The Katrina Dawson Foundation	In memory of Katrina Dawson	\$10,000
		\$459,570

Clause 217 (1) (a6) External bodies

During the year 2014/15 there were no external bodies exercising functions delegated by the City.

Clause 217 (1) (a7) Partnerships, cooperatives and joint ventures

The City held no decision-making controlling interest in any corporation, partnership, trust, joint venture, syndicate or other body during the financial year 2014/15.

Clause 217 (1) (a8) Partnerships, cooperatives and joint ventures

In 2014/15, the City participated in the following corporations, partnerships, trusts, joint ventures, syndicates or other bodies:

Regional Waste Strategy Group

The City has agreed, via an MOU, to work with the Southern Sydney Regional Organisation of Councils (SSROC), and 16 of its participating councils to develop a regional waste strategy and implementation actions. The strategy identifies potential regional solutions for improving recycling rates, diverting waste from landfill, illegal waste dumping and litter. The City has played a lead role to inform and educate waste managers on the technologies, benefits and barriers of energy from waste solutions. The establishment of the strategy has been financed from NSW Government Waste Less Recycle More Fund. The development of this strategy and action plan is an important step toward gaining future funding from the state government to address regional waste issues.

Sydney Harbour Water Quality Improvement Plan

Greater Sydney Local Land Services (GL LLS) formerly the Sydney Metropolitan Catchment Management Authority (SCMMA), is leading a project to develop the Sydney Harbour Catchment Water Quality Improvement Plan (WQIP). The objective of the WQIP is to achieve an improvement in the water quality of Sydney Harbour, its tributaries and its catchments. The WQIP encompasses the whole catchment as well as the Harbour and will provide a coordinated management framework for the 28 local councils, 11 state government agencies

and two Commonwealth government agencies who have a stake in improving the future health of Sydney Harbour and its catchments. The City Of Sydney along with 27 other local councils entered a MoU with SCMMA in 2011, to work cooperatively to develop the plan over the financial years 2011/12, 2012/12 and 2013/14.

Local Water Solutions Forum

The Local Water Solutions Forum was previously known as the Decentralised Recycled Water Working Group. It was established in 2008 by Sydney Water with private industry partners to facilitate information sharing and improved understanding of industry needs in relation to decentralised systems and the future impacts on the operations of a water utility as a result of wider application of these schemes. The group successfully provided a safe space for a solution-focused interface between the incumbent public utility and the emerging private local water industry.

In the intervening years, a viable private industry has emerged, many technical operational interface issues have been resolved, and membership of the group has broadened to include other key stakeholders.

The Food Regulation Partnership

The City has a partnership with the NSW Food Authority.

The partnership's objectives are:

- Safer food for consumers – reduce the impact of foodborne illness caused by the retail food sector;
- Strengthen the food safety response capacity of NSW Government and local government agencies; and
- Better use of local and state government resources, including avoiding duplication of food regulation services.

These types of partnerships will maintain consistencies in food regulation across NSW, require increased levels of reporting and provide training for staff monitoring and enforcing food safety.

Low Carbon Living (LCL) Cooperative Research Centre (CRC)

The City has agreed to enter into a partnership with the University of New South Wales (UNSW) and other participants to establish the Low Carbon Living Cooperative Research Centre (LCL CRC). This is subject to funding from a Cooperative Research Centre grant.

Participating in the LCL CRC will provide valuable research funding that can be applied to investigate the positive contribution green roofs can make to the City's urban environment.

Participation will also improve the City's ability to engage with the property industry and the NSW Government on green roof issues.

Design for Cities (DFC) Cooperative Research Centre (CRC)

The City has agreed to enter into a partnership with the University of Technology Sydney (UTS) and other participants to establish the Design for Cities Cooperative Research Centre (DFC CRC). This is subject to funding from a Cooperative Research Centre grant.

The research will focus on two major areas: the knowledge and information economy and design and placemaking.

Participating in the program will provide valuable research that can be applied to the City's ongoing policy and urban management work. It is also likely to improve the City's ability to engage with the federal government on city-focused issues.

Legislative Requirements

CRC for Water Sensitive Cities

CRC for Water Sensitive Cities is a nine-year research program led by CRC for Water Sensitive Cities Ltd (CRCWSC) in collaboration with over 70 research, industry and government partners to deliver socio-technical urban water management solutions, education and training programs, and industry engagement required to make towns and cities water sensitive.

The City Of Sydney is part of a regional Sydney Metropolitan Consortium of interested councils and NSW Government agencies, coordinated by the Greater Sydney Local Land Services (GS LLS). The Consortium is a member of the CRCWSC.

The Consortium members are:

- Member Councils: Blacktown City Council, Fairfield City Council, Hornsby Shire Council, City of Sydney, Kurrung-gai Council, City of Newcastle, Strathfield Municipal Council and Warringah Council
- Member Agencies: NSW Department of Planning, NSW Metropolitan Water Directorate
- Lead Agency: Greater Sydney Local Land Services.

Consortium members entered an MOU in July 2010 for a period of five years.

University of New South Wales Faculty of Built Environment (UNSW) MOU

In April 2010 the City and the UNSW Faculty of Built Environment entered into a MOU to establish the 'Urban Research Board' whereby the City and UNSW can explore and develop teaching and research ideas and projects based on the built environment of the city. The collaboration is intended to integrate activity involving the design professions, construction, and property development and information technology.

Transforming Sydney – A City/State Partnership 2010–2015

The City, Department of Transport NSW and Department of Planning NSW signed a five-year MOU in September 2010 to work together to improve public transport, taxi, walking and cycling in the City. Under the agreement several practical changes to how public transport, taxis and traffic signals operate have been completed and a wider range of more substantial projects are in development. With the change of state government in March 2011, a renegotiation process began on a new agreement without affecting delivery of the existing interagency projects.

Inner City Mayors' Supply for Affordable Housing Project

The City received Commonwealth Housing Affordability Funding for the Inner City Mayors' Affordable Housing Project on behalf of 11 inner metropolitan councils. Recognising the need to increase the supply of affordable rental housing the Inner City Mayors' Forum initiated the project, which identifies sites owned by council, government agencies and the private sector for the development of affordable rental housing.

The project identifies 20 sites producing 1,000 new homes, half of which are to be dedicated for affordable rental housing. The project also aims to identify issues that affect the provision of affordable rental housing and to help develop a best practice guide.

Wentworth Park Sporting Complex Trust

Council is a member of the Wentworth Park Sporting Complex Trust which is made up of representatives of the Department of Lands, Department of Racing and Gaming, Greyhound Racing NSW, the Greyhound Breeders, Owners and Trainers Association, the local community and Council. The trust makes decisions on the management and operation of the sporting complex and its relationship to the adjoining residents and parkland. Projects delivered by the trust include the upgrade of Wattle Street, improved change rooms for the sports fields and opening the light rail viaduct arches. Council is also working with the

trust on northern boundary improvements between the park and the sporting complex, and improved public access through the sporting complex.

Chief Operations Office Owners Consent Deed with Frasers

The City has established a cooperative deed of agreement with Frasers Property for developing the former Carlton and United Brewery, Chippendale. The key components of the agreement, and the relative voluntary planning agreement with the Minister for Planning, include commitment to precinct water and energy saving programs, Council ownership of primary roads, an increase in the contribution for the community facilities, the option of monetary contributions to Council for road crossings, Council approval of management plans, a fast-tracked completion date for a public park and extended maintenance periods for Council roads.

National Institute for Experimental Arts (NIEA), COFA, UNSW

Curating the City is a ground-breaking creative arts driven research program by the National Institute for Experimental Arts (NIEA) at the College of Fine Arts, University of New South Wales, conducted over five years as part of an Australian Research Council funded project. Led by NIEA, Curating the City is a partnership research project with Object: Australian Centre for Craft and Design, Digital Eskimo and the City, to demonstrate the capacity of the arts to promote and create sustainable urban cultural environments. The research project will provide a project website and database register of global best practice sustainable public art projects and bring national and international artists to Sydney for project workshops and symposiums. Council approved cash sponsorship for the NIEA at the University of New South Wales of \$20,000 (excluding GST) a year for five years from 2011/12 to 2015/16 to a total of \$100,000.

International Memorandum of Understanding – Chongqing

A Memorandum of Understanding between the City, NSW Government and Chongqing of the People's Republic of China was signed in February 2010 to formalise the strong will of all the parties to develop friendly cooperative relations.

International Memorandum of Understanding – Hubei

A Memorandum of Understanding was signed on the establishment of friendly cooperative relations between the Province of Hubei of the People's Republic of China, the State of New South Wales and the City.

Better Buildings Partnership

The Better Buildings Partnership is a collaboration of a number of Sydney's leading public, private and institutional landlords. The partnership aims to improve the sustainability performance of existing commercial and public sector buildings across Sydney's local government area. The partnership will deliver resources and tools to tackle the challenges facing the commercial property sector and help Sydney become one of the world's top sustainable cities. The founding members are: AMP Capital Investors, Brookfield Office Properties Australia, Charter Hall, The City of Sydney, Colonial First State, DEXUS Property Group, Frasers Property, The GPT Group, Investa Property Group, Lend Lease, Mirvac, Stockland, the University of Sydney, and the University of Technology.

CitySwitch Green Office

The CitySwitch Green Office national program is a collaboration of leading cities and local councils and other partners in Australia to deliver the CitySwitch program. The program supports office-based businesses committed to improving their energy efficiency with help and assistance to deliver energy and cost savings and to improve their overall environmental performance. The current term of the collaboration is from 1 July 2015 to 30 June 2018 and the agreements are between the City of Sydney and partners: North Sydney Council, Willoughby City Council, City of Melbourne, City of Perth, City of Adelaide and the Office of Environment and Heritage.

Green Living Centre MOU with Marrickville Council

The Green Living Centre (previously known as The Watershed) is a sustainability 'drop-in' information and education hub located at 218 King Street, Newtown.

The centre is a partnership between the City of Sydney and Marrickville Council and is part of an ongoing commitment to support sustainability in the Newtown precinct. In March 2014 the Councils committed to a further three-year partnership for the centre. The centre's core vision is "A community that is committed to low carbon living and one that is reducing its environmental footprint in line with a 70 per cent reduction in carbon emissions by 2030" which aligns strongly with the Sustainable Sydney 2030 targets. The Green Living Centre delivers a range of campaigns and programs seeking to raise awareness of low carbon living and providing the local community with the tools to reduce their carbon footprint.

LJ Hooker Liveability Program Deed of Agreement

In June 2014 the City became a 'council partner' with LJ Hooker on its Liveability Program. The program consists of an online portal for consumers in relation to cost efficient sustainability in property and the training of real estate specialists who are able to educate renters, owners and investors by appraising and listing properties based on sustainability features. The Liveability Program aligns with the City's sustainability program work in Smart Green Apartments, Smart Blocks and Green Villages.

Cooks River Sustainability Initiative (Our River)

The City is working in partnership with seven other councils in the Cooks River catchment to build capacity of council staff and the community in planning for catchment management with the view to develop best practice water conservation and stormwater quality improvement. The project team is working with communities, businesses and councils for long-term improvement of the catchment.

Lord Mayor & NSW Minister for the Environment MOU

The Lord Mayor and NSW Minister for the Environment signed an MOU in October 2014 to deliver improved environmental outcomes within the City of Sydney. Under the MOU, City of Sydney, NSW Office of Environment and Heritage, Environmental Protection Authority and NSW Planning and Environment are undertaking collaborative projects spanning residential planning codes, advanced waste treatment, environmental upgrade agreements and actions aligned with the City's residential apartments sustainability plan.

C40 Private Sector Buildings Energy Efficiency network co-leadership with Tokyo metropolitan government

In May 2014, the City accepted an invitation to serve as a co-leader, with the Tokyo metropolitan government, of the C40 Private Sector Buildings Energy Efficiency network. This network is one of the largest and most established within C40, with approximately 15 cities from Europe, North America, Latin America, Oceania and East Asia actively participating. Co-leadership of the network provides a connection for our City stakeholders to global networks and enables the City to consult and develop best practice policy, programs and services through connections with staff in other megacities.

Deed of Agreement – Environmental Upgrade Agreements

The City is partnering with a range of state and federal government agencies, local government organisations, industry peak bodies and financial institutions to administer the EUA service and to address market based issues to improve uptake of the EUA mechanism.

Organisations include; NSW Office of Environment and Heritage, Eureka Funds management, National Australia Bank, Australia and New Zealand Banking Corporation, Clean Energy Finance Corporation, North Sydney Council, Parramatta City Council, Lake Macquarie Council, Newcastle City Council and the Property Council of Australia

Legislative Requirements

Transport MOU

In September 2010, the City signed a 'Transforming Sydney Memorandum of Understanding' with the former NSW Government which will guide improved public and active transport options, as well as traffic flows for the whole of the City centre. The City has set aside \$220 million to ensure light rail delivers the maximum benefits for the city.

Homelessness Outreach

The City continues to partner Housing NSW to jointly fund an Assertive Homelessness Outreach and Support Service for rough sleepers. This service, Way2Home, is provided by Neami, a non-government service provider. The federal government has also provided funding towards the inclusion of a Health Outreach Team in the Way2Home Service which will be operated by St Vincents Hospital in partnership with Neami. Way2Home focuses on referring rough sleepers who have been homeless over a long term into stable and supported housing.

YWCA Homelessness Brokerage Service

The City continues to partner Housing NSW to jointly fund the Homelessness Brokerage Program operated by the YWCA under contract to the City. This program provides help to prevent new or enduring homelessness to people at risk or who have recently fallen into crisis.

Public Housing MOU (Housing NSW)

The City of Sydney and Housing NSW signed an MOU in August 2009 to work together with residents and the community to significantly improve the amenity, safety, health and wellbeing of people living in and around public housing areas. Staff from the two organisations meet monthly to discuss and resolve issues of interest to public housing residents and their local communities.

These have included bed bugs, cleansing, safety, pet education, recycling, community events, the Camperdown Project (Common Ground), cycle paths and urban planning for Woolloomooloo.

Redfern Community Centre

The City and Redfern Police Command signed an MOU in August 2009 to improve the levels of understanding and cooperation between the police and the Redfern Community Centre, and to allow each to pursue their activities with respect and consideration for each other.

The MOU aims to bring consistency and agreed standards to the work of the police when they need to visit the centre in relation to their duties, and makes clear the expected responses of the centre staff.

Green Square

The City has established a high level interagency forum chaired by the Director of City Culture and Community to consider, develop and implement a social infrastructure and services strategy for Green Square. Key state and federal agencies and NGOs involved include health and ageing, general practice, education, community services, housing and police. This taskforce will be crucial to the future development of infrastructure and services for this important urban renewal village centre.

Clause 217 (1) (a9) Equal Employment Opportunity (EEO) activities

Equal Employment Opportunity continues to be integral to effective people management in the City. In 2014/15 key activities undertaken to implement the City's EEO Management Plan included:

1. Regular review of policies and procedures to support a workplace culture displaying fair practices and behaviours.
2. Training programs for employees and managers in:
 - Cultural Awareness (Asian Intelligence) – 26 people attended
 - Aboriginal and Torres Strait Island Cultural Awareness – 44 people attended
 - Mental Health Awareness for People Managers – 291 people managers attended
 - Managers' Disability Awareness – 10 managers completed the face-to-face pilot program
 - Disability Awareness for staff – 70 people completed the eLearning module.

3. A network for Aboriginal and Torres Strait Islander staff with senior management sponsorship, including the CEO. This includes a yearly forum where employees gather to discuss topical issues.
4. Ongoing support for the Aboriginal Employment Service school-based traineeships, with seven trainees currently at the City.
5. Implementation of actions as a White Ribbon-accredited workplace. This program has built workplace awareness and changes in culture, practices and procedures, resulting in the development of knowledge and skills to address issues of violence against women.
6. The development and Council adoption of the City's first Reconciliation Action Plan, which focuses on working together on new approaches for building relationships, showing respect, and improving opportunities for Aboriginal and Torres Strait Islander people.
7. Application submitted to become a 5050Vision accredited organisation. This program is the first national accreditation and awards program which encourages councils across Australia to address gender equity issues within the organisation.
8. The development and Council adoption of the City's revised four-year Workforce Strategy. This strategy has a stronger focus on diversity and inclusion.

Clause 217 (1) (b) General Manager (CEO) Remuneration Packages

The total remuneration comprised in the remuneration package of the general manager in 2014/15 is as follows:

(i) the total value of the salary component of the package	\$412,875
(ii) the total amount of any bonus payments, performance payments or other payments made to the general manager that do not form part of the salary component of the general manager	\$-
(iii) the total amount payable by the council by way of the employer's contribution or salary sacrifice to any superannuation scheme to which the general manager may be a contributor	\$39,223
(iv) the total value of any non-cash benefits for which the general manager may elect under the package	\$-
(v) the total amount payable by the council by way of fringe benefits tax for any such non-cash benefits	\$-

Clause 217 (1) (c) Senior Staff Remuneration Packages

The total remuneration comprised in the remuneration packages of all senior staff members (other than the general manager) employed during the year 2014/15, expressed as the total remuneration of all the senior staff members concerned (not of the individual senior staff members) is as follows:

(i) the total value of the salary component of the package	\$2,308,501
(ii) the total amount of any bonus payments, performance payments or other payments made to them that do not form part of the salary components of their packages	\$-
(iii) the total amount payable by the council by way of the employer's contribution or salary sacrifice to any superannuation scheme to which any of them may be a contributor	\$253,312
(iv) the total value of any non-cash benefits for which any of them may elect under the package	\$53,948
(v) the total amount payable by the council by way of fringe benefits tax for any such non-cash benefits	\$39,982

Clause 217 (1) (e) Annual charge for stormwater management services

In 2014/15, the income from the stormwater levy was \$1,876,550. A total capital expenditure of \$11,180,687 was spent on stormwater management projects within the LGA in three categories:

1. Developing floodplain risk management plans for all catchments in the LGA.
2. Stormwater drainage upgrades including investigation, design and construction.
3. Stormwater drainage quality improvement works including investigation, design and construction.

The City continued the preparation of floodplain risk management studies and plans including:

- Blackwattle Bay Catchment Floodplain Risk Management Study and Plan (completed);
- Johnstons Creek Catchment Floodplain Risk Management Study and Plan (completed);
- Draft Centennial Park and Rushcutters Bay Catchments Floodplain Risk Management Study and Plan (85 per cent complete);
- Draft Woolloomooloo Catchment Floodplain Risk Management Study and Plan (85 per cent complete);
- Draft City Area Catchment Floodplain Risk Management Study and Plan (30 per cent completed); and
- Draft Darling Harbour Catchment Floodplain Risk Management Study and Plan (30 per cent completed).

Legislative Requirements

The City completed or partially completed drainage investigations and designs for the following program of future works:

- CCTV drainage investigations and design of various drainage problems;
- Stormwater Asset Condition Assessment (14 per cent completed);
- Herbert Street, Newtown – drainage
- Abercrombie Lane, Sydney – drainage mains replacement
- Parramatta Rd (near 25A), Camperdown – stormwater pipe replacement
- Windmill Street, Dawes Point – drainage for new raised marked crossing east of Kent Street
- Reservoir Street rain gardens – new inlet pits
- No. 336 Victoria Road water ponding – new trench grate and footpath levels adjustment
- No. 64 – 74 Henderson Road, Alexandria – new pit and stormwater pipe extension near bus stop
- Joynton Avenue, between O’Dea Avenue and Elizabeth Street, Zetland – amplification of trunk drainage

The City completed or partially completed the construction of the following drainage upgrades and stormwater quality improvement works:

- Emanuel Lane, Rosebery;
- Carillon Avenue, Camperdown;
- Bourke Road, Alexandria;
- Cartmore Lane, Surry Hills;
- Gibbes Lane, Newtown;
- Jamison Street, Sydney;
- Jenkins Street, Millers Point;
- Goodlet Lane, Surry Hills;
- Barwon Park Road, Alexandria;
- Leinster Street, Paddington; and
- Ivy Street, Darlington.

Clause 217 (1) (e1) Annual charge for coastal protection

The City has not levied an annual charge for coastal protection services in 2014/15.

Clause 217 (1) (f) Companion Animals Act reporting

The City carried out the following activities in 2015/16 in relation to enforcing, and ensuring compliance with, the provisions of the *Companion Animals Act 1998* and the regulation under that Act:

Companion animal activities

Pound data

In the period 1 July 2014 to 30 June 2015 the City of Sydney seized 64 cats and 134 dogs for a total 198 animals.

Of these animals, 64 cats and 112 dogs, a total of 176 animals, were transferred to the Sutherland Shire Animal Shelter, with which the City has a shared services agreement to care for the impounded animals.

- 22 dogs were returned to their owners without requiring transfer to the Animal Shelter
- seven cats and 48 dogs were released to their owners by the Animal Shelter
- three cats and three dogs were euthanised due to illness or poor suitability for rehoming due to temperament
- 52 cats and 59 dogs were rehomed by the Animal Shelter staff
- the remaining two cats and two dogs had not been released from the shelter at the cut-off date of this report.

Dog attacks

There were 126 reported dog attacks in the City of Sydney LGA in 2014/15.

- 18 were infringed
- four received cautions as they were minor incidents
- 70 had no action taken due to the offending dog not being able to be identified
- 34 are still under investigation
- three were menacing dog orders
- one dog was euthanised due to dog attacks

Some incidents were classified in more than one of the above categories.

Companion animal community education programs

Dog obedience training

The City funded four six-week basic and intermediate dog obedience training courses for residents to assist in educating them about their responsibilities under the Companion Animals Act.

At the end of the courses the residents were able to exercise effective control of their dogs, have a greater understanding of dog health and behaviour and contribute to making parks and open spaces a safer and friendlier environment for all visitors.

Approximately 318 residents participated in the four courses offered in 2014/15, 303 participants completed the courses. Courses were held throughout the year in July/Sept, 2014, Oct/Dec 2014, Feb/Mar 2015 and Apr/Jun 2015.

Promoting desexing and microchipping

Operation cat

To assist residents on low incomes or pensions, the City has been working with the Cat Protection Society of NSW to provide a subsidised desexing service. For \$46 residents are able to have their cats desexed, microchipped and transported to and from the vet for the surgery.

In 2014/15, a total of 94 cats were desexed (29 males and 65 females) and 80 cats were microchipped as part of Operation Cat.

In addition to the microchipping provided under Operation Cat, the City provided free microchipping with desexing for dog-owning residents who held pensioner concession or health care cards. 40 dogs were microchipped by qualified City staff, without charge. The total number of dogs and cats microchipped by the City in 2014/15 was 120.

Pet Taxi

The City provided a one a month pet taxi service by an established pet taxi company (“Porters 4 Pets”), to assist residents on pensions or low incomes in accessing discounted desexing services for their dogs. Sylvania Veterinary Hospital provides a discounted fee for desexing. 30 dogs were transported and desexed during 2014/15.

People and Pets Day at Northcott

This annual event is designed to educate the community about responsible pet ownership as well as providing access to discounted desexing, free microchipping, free veterinary health checks and free parasite control. The day also aims to promote a 'sense of community' for all pet owners whilst offering support and advice.

Leads, Treats and Information Leaflets

City Rangers and Companion Animal Officers visit the City's parks and open spaces on a regular basis reminding visitors about their rights and responsibilities under the Companion Animals Act. Visitors are offered giveaway leashes and clip-on dog waste dispensers to encourage owners to keep their dogs on leash when required and to clean up after their dogs. The City also provides a "Cats in the City" facts sheet to educate residents about responsible cat care.

Strategies

The City has a shared services agreement with the Sutherland Shire Council to use its Animal Shelter. The shelter is a no-kill facility with the lowest euthanasia rate in NSW. The focus for the agreement is to re-home all suitable animals and work together to provide a state-of-the-art animal adoption facility.

The animals available for adoption are promoted in the City's weekly staff newsletter.

NSW Companion Animal Financial Reports 2014/15 in which Office of Local Government (OLG) funds are used

The City spends in excess of \$300,000 annually on companion animal services, for which the OLG provided a total rebate of \$45,653 in 2014/15. Two payments for the 2014/15 period provided funding of \$31,976 and one payment at a total of \$13,677 were carried over from 2013/14.

Allocated OLG funds	\$45,653
Dog Training Courses (there were four in this financial year, the City funded two and OLG funds were used for the other two)	\$27,720
Pet Taxi (transport only to and from vet for discounted dog desexing) 30 dogs were desexed as part of the program	\$6,380
Operation Cat – Subsidised Cat Desexing, 29 males and 65 females, a total of 94 cats, were desexed through the program	\$3,504
Operation Cat flyer printing and delivery (advertising & delivery for the discounted desexing program)	\$1,737
Dogs in Public Places – Responsible Dog Ownership pamphlet	\$765
Dog waste dispensers and dog leashes	\$2,207
Microchips	\$450
Aussie Wildlife Displays (Northcott Pets and People Day)	\$700
Pet Tags and engraver for Northcott Day	\$2,192
TOTAL EXPENDITURE OLG FUNDS	\$45,653

Environmental Upgrade Agreements (NSW)

7.2 Reporting by Council

In 2014/15, the City:

- i. entered into one Environment Upgrade Agreement (EUA):
 - 26 Waterloo St
- ii. carried out the following environmental upgrade works:
 - Lift upgrades, including replacing lift motor with a more efficient motor and new regenerative drives (74 Castlereagh Street, Sydney)
 - Replacement of existing chillers, installation of a new building management system and lighting upgrades in the common areas, carpark and fire stairs (St James' Hall, 169 Phillip St, Sydney)

Note: No works were completed for the 26 Waterloo Street EUA as it was signed 9 June 2015, the end of the reporting period.

- iii. The total cost of the environmental upgrade works carried out during the financial year was \$1,436,374 = \$735,272 (74 Castlereagh Street, Sydney) + \$701,102 (169 Phillip Street)

Legislative Requirements

Environmental Planning and Assessment Act 1979 No. 203

Section 93G (5)

The following planning agreements were in force in the year 2014/15:

Application No.	Description of works	Other party to VPA	Primary street address	Status
VPA/2013/1	D/2005/1340 – Land dedication and construction of new roads, cycleway and modification of the intersection at Epsom and Link Roads	Reachdaze Pty Ltd and The Warehouse Pty Ltd	87–103 Epsom Road, Rosebery	Executed
VPA/2013/10	D/2008/1588 – Monetary contribution of \$125,210 toward improvements to Prince Alfred Park.	Sankilt Pty Ltd	133 Regent Street, Redfern	Executed
VPA/2013/11	D/2011/1198 – Monetary contribution of \$1,428,468 towards the City Centre to Green Square (north south) cycle link and the Sydney Park to Centennial Park (east west) cycle link	Dionysius Pty Ltd	356–368 George Street, Waterloo	Ongoing
VPA/2013/12	D/2012/696 – Monetary contribution of \$765,970 for public domain enhancement works for the Regimental Square project	Trust Company of Aust & Others	331–339 George Street, Sydney	Ongoing
VPA/2013/13	D/2007/1584 – Monetary contribution of \$535,800 towards Surry Hills Pedestrian, Cycling & Traffic Calming Scheme	Toga Development No 36 Pty Ltd	353–359 Crown Street, Surry Hills	Executed
VPA/2013/14	D/2008/102 – Land dedication and construction of new roads, monetary contribution of \$1,670,000 towards community infrastructure in Green Square Town Centre and a monetary contribution of \$17,400 for local cycleways	Overland Consolidated Pty Ltd	67–77 Epsom Road, Rosebery	Ongoing
VPA/2013/15	D/2010/1052 – Monetary contribution of \$202,455 towards public domain works to Crown and Baptist Streets	Stasia Pty Ltd	35 Richards Avenue, Surry Hills	Executed
VPA/2013/16	D/2010/1120 – Monetary contributions of \$111,480 for community infrastructure in Green Square Town Centre and \$411,885 for Alexandria Canal drainage improvement projects	HI Constructions Pty Ltd	15–17 Fountain Street, Alexandria	Ongoing
VPA/2013/17	D/2010/2029 – Land dedication and improvements to the public domain, road and footpath on Pitt and George Streets, including Smartpole lighting, redundant driveway replaced with granite paving, traffic control, parking signage and public art within a through-site link	Valad Commercial Management Ltd	1 Alfred Street, Sydney	Executed
VPA/2013/18	D/2010/756 – Monetary contribution of \$55,100 towards road and footpath improvements to Dibbs Street and Anzac Parade	Anita Bhandari	14 Martin Road, Centennial Park	Executed
VPA/2013/19	D/2011/1420/A – Land dedication and construction of new road and a 5,000sqm public park	Sydney Christian Life Centre Ltd	28–30 Rothschild Avenue, Rosebery	Ongoing
VPA/2013/20	D/2011/73 – Monetary contribution of \$270,000 for community public benefits in local area	Sevenex Pty Ltd	65 Cowper Wharf Roadway, Woolloomooloo	Ongoing
VPA/2013/21	D/2012/1931 – Monetary contribution of \$266,947 for Hyde Park tree project, public domain improvements to green space above car park and public art project to the value of \$120,000	Sicard Pty Ltd	169–183 Liverpool Street, Sydney	Ongoing
VPA/2013/22	D/2012/342 – Monetary contributions of \$56,515 for community infrastructure in Green Square Town Centre and \$211,931 for stormwater drainage improvements in the Alexandria Canal drainage catchment area.	Bizzart Pty Ltd and Delami Pty Ltd	45 Beaconsfield Street, Beaconsfield	Ongoing

Legislative Requirements

Environmental Planning and Assessment Act 1979 No. 203 (continued)

Application No.	Description of works	Other party to VPA	Primary street address	Status
VPA/2013/23	D/2012/893 – Land dedication and embellishment work to construct a public plaza, new road, recreation areas, an activated laneway network and fine grain uses, art and granite infill paving and a monetary contribution of \$2,575,702 for public domain improvements	Mirvac Projects Pty Ltd	200 George Street, Sydney	Ongoing
VPA/2013/26	D/2014/1758 – Dedication of land for the construction of the Green Square Library and Plaza, dedication of land and works for public footpath, construction of a publicly accessible path linking the public parking on the site to the Green Square Library, payment of a cash contribution towards the delivery of Green Square Town Centre essential civil infrastructure; and the design and construction of any proposed building to connect to the City's Green Infrastructure network.	Crown International Holdings Group Pty Ltd	301–303 Botany Road, Zetland	Ongoing
VPA/2013/27	D/2004/259 – Land dedication and construction of roads, footpaths, through site links and plaza areas which are able to be used by the public via rights of public access, the construction and dedication of a public park, the design and construction of community stormwater detention facilities and a monetary contribution towards community infrastructure	Everest Project Developments Pty Ltd	830–840 Bourke Street, Waterloo	Executed
VPA/2013/3	D/2004/225 – Dedication and embellishment of land for new park (Mary O'Brien Reserve), road improvements, footpath widening, through-site link, stormwater and public domain infrastructure	Cronos Corporation Pty Ltd	13 Joynton Avenue, Zetland	Ongoing
VPA/2013/30	D/2008/531 – Dedication and embellishment of land for new and extended roads and footpaths and a monetary contribution of \$1,492,157 towards community infrastructure in Green Square Town Centre	Crown International Holdings Group Pty Ltd	30–36 O'Dea Avenue, Waterloo	Ongoing
VPA/2013/31	D/2012/1724 – Monetary contribution of \$1,119,070 towards public domain and community infrastructure improvements in the local area and enhancements to Rushcutters Bay Park	Rushcutters Bay Developments Pty Limited and Lindsay Bennelong Developments Pty Limited	16–32 McLachlan Avenue, Darlinghurst	Executed
VPA/2013/32	D/2012/282 – Monetary contribution of \$117,800 towards community infrastructure in Green Square Town Centre	William Property Pty Limited	17–19 Collins Street, Beaconsfield	Executed
VPA/2013/34	D/2010/1411 – Dedication and embellishment of land for footpath improvements and road widening to Amelia, Murray and Taylor streets, replacement street lighting, landscaping including street trees and planter boxes and a monetary contribution of \$160,500 towards community infrastructure	Amelia 1822 Pty Ltd	18 Amelia Street, Waterloo	Ongoing
VPA/2013/35	D/2010/1940 – Dedication and embellishment of land for footpath widening, undergrounding of power lines in Elizabeth and Powell streets, improvements to street lighting and a monetary contribution \$111,500 towards community infrastructure	Loftex Pty Limited	826–828 Elizabeth Street, Waterloo	Ongoing

Legislative Requirements

Environmental Planning and Assessment Act 1979 No. 203 (continued)

Application No.	Description of works	Other party to VPA	Primary street address	Status
VPA/2013/36	D/2011/1582 – Dedication and embellishment of 73.1sqm for footpath improvements and a monetary contribution of \$413,280 for community infrastructure	Milligan Property Pty Ltd	141–143 McEvoy Street, Alexandria	Ongoing
VPA/2013/37	D/2011/1915 – Dedication and embellishment of footpath widening to McEvoy Street and a monetary contribution of \$185,594 towards community infrastructure	Ambicam Pty Ltd	145 McEvoy Street, Alexandria	Ongoing
VPA/2013/38	D/2011/697 – Public domain improvements, undergrounding of power lines and new street lighting to Wyndam Street and a monetary contribution of \$144,142 for community infrastructure	Waltcorp Riverbank Nominee Pty Ltd	123–129 Wyndham Street, Alexandria	Ongoing
VPA/2013/39	D/2010/2176 – Dedication and embellishment of 1,756sqm for Woolwash Park extension, 995sqm for Grandstand Parade extension, 2,136sqm for Victoria Park Parade extension and linear park and a monetary contribution of \$1,143,700 for community infrastructure	Karimbla Properties Pty Ltd	114 Joynton Avenue, Zetland	Ongoing
VPA/2013/4	D/2008/368 – Footpath improvements (including supply and installation of all relevant paving, kerbing, landscaping and lighting materials), public art (including design, fabrication and installation) the final form of which is to be developed in consultation with and approved by the Council to a value of \$1,570,000 and a monetary contribution of \$815,308 for public domain improvements	Mirvac Projects Pty Ltd	8–12 Chifley Square, Sydney	Ongoing
VPA/2013/40	D/2011/1798 – Dedication and construction of a pedestrian through-site link over Council land and Railcorp land, linking the Wentworth Park light rail station to the end of Jones St.	Edwin Davey Pty Ltd	280 Jones Street, Prymont	Ongoing
VPA/2013/41	D/2013/784 – Construction and dedication of a new verge and footway to MacDonald Street, new roads and shared pedestrian/traffic areas at Metters Street, Pearl Street and Bridge Street, construction and dedication of a new pocket park and the construction and dedication of a pedestrian link and landscaping works as set out in a Deed of Variation.	36/1A Coulson Pty Ltd and Ashmore Developments Pty Limited	Unit 36–36A/Lot 2 1A Coulson Street, Erskineville	Executed
VPA/2013/42	D/2010/950 – Streetscape upgrades adjacent to the site including footpath widening to Quay St and Ultimo Rd and a monetary contribution of \$120,216 towards Chinatown public domain improvements	The Quay Haymarket Pty Ltd	61–79 Quay Street, Haymarket	Ongoing
VPA/2013/43	D/2015/913 – Land dedication and developer's works-in-kind to construct new roads, footpaths and public open space	Lincon Development Pty Ltd	106–116 Epsom Road, Zetland	Exhibition
VPA/2013/44	D/2011/1853 – Dedication and embellishment of 78.5sqm of land fronting Botany Road, Boundary Street, Spencer Lane and Chapel Lane as public road	Bluehold 1 Pty Ltd	2–4 Botany Road, Alexandria	Ongoing
VPA/2013/45	D/2011/64 – Dedication of 5,457sqm of land and the construction of new roads, an extension of Defries Ave and establishment of an east-west boulevard as a temporary open space	Meriton Apartments Pty Ltd and Karimbla Properties (No 16) Pty Ltd	899 Dowling Street, Zetland	Ongoing
VPA/2013/46	D/2013/1370 – Monetary contribution of \$313,470 towards street tree planting projects in Rosebery and intersection extensions at Morley and Rosebery Avenues and \$83,592 towards community infrastructure in the Green Square Town Centre	Baalmoral HJ Pty Ltd	14–16 Primrose Avenue, Rosebery	Exhibited

Legislative Requirements

Environmental Planning and Assessment Act 1979 No. 203 (continued)

Application No.	Description of works	Other party to VPA	Primary street address	Status
VPA/2013/47	D/2012/1315 – Transfer of 3,571sqm of land to the City for future green-link and cycleway along Alexandra Canal	Bricktop Huntley Pty Ltd	6A Huntley Street, Alexandria	Ongoing
VPA/2013/48	D/2012/1852 – Monetary contributions of \$45,646 towards community infrastructure and \$171,174 towards stormwater improvement projects in the Alexandra Canal catchment area	Rpna Holdings Pty Ltd	11–13 William Street, Alexandria	Executed
VPA/2013/49	D/2012/186 – Dedication and embellishment of 110.64sqm of land for footpath widening and landscaping, a monetary contribution of \$160,987 towards public domain improvements in the local area and a monetary contribution of \$58,850 towards community infrastructure in the Green Square Town Centre	Domarv Investements Pty Ltd	857 South Dowling Street, Waterloo	Executed
VPA/2013/50	D/2013/383 – Monetary contribution of \$78,820 for community infrastructure in Green Square Town Centre	Viewgloss Pty Ltd	9 Power Avenue, Alexandria	Exhibited
VPA/2013/51	D/2013/518 – Monetary contribution of \$316,350 for provision of community infrastructure in Green Square Town Centre	Mgt 1 Pty Ltd	76 Mitchell Road, Alexandria	Executed
VPA/2013/52	D/2013/591 – Monetary contribution of \$46,630 towards community infrastructure in Green Square Town Centre and \$174,862 towards stormwater infrastructure improvements in the Alexandra Canal catchment	Kys Group Pty Ltd	196–202 Wyndham Street, Alexandria	Exhibited
VPA/2013/53	D/2013/62 – Monetary contribution of \$98,207 towards community infrastructure in the Green Square Town Centre	Mr John Higgins and Mrs Sandra Higgins and My Place Estate Agents Pty Limited	19 William Street, Alexandria	Completed
VPA/2013/54	D/2013/700 – Dedication and embellishment of 264sqm of land for footpath widening to Elizabeth St, a monetary contribution of \$270,000 for community infrastructure in Green Square Town Centre, a monetary contribution of \$900,000 towards the Stormwater Harvesting Project in Waterloo Oval and a monetary contribution of \$63,450 towards the City's Drainage Renewal Program	Waterloo Landholding Pty Ltd	810–822 Elizabeth Street, Waterloo	Ongoing
VPA/2013/60	R/2009/115 – Dedication of 6,300sqm and construction of Main Park including stormwater detention system, road and pedestrian improvements including signalised crossings at City Road and Regent Street, embellishment Balfour Park and the provision of, or upgrade to, a community facility within the Chippendale locality to the value of \$2,725,000	Frasers Broadway Pty Ltd and the Minister for Planning	26–60 Broadway, Chippendale	Ongoing

Legislative Requirements

Environmental Planning and Assessment Act 1979 No. 203 (continued)

Application No.	Description of works	Other party to VPA	Primary street address	Status
VPA/2013/61	D/2012/2000 – dedication and embellishment of a 10 metre wide landscaped setback to South Dowling Street and O’Dea Avenue, dedication and construction of a new road (Amelia Street south), stormwater and civil works associated with a future public park and public roads, dedication of land for four roads, a public park (Wulaba Park) and public domain works, construction of the roads and embellishment of the park and creation of an overland flow easement and pedestrian right-of-way as a through-site link, linking Hatbox Place and South Dowling Street	Meriton Property Services Pty Ltd and Karimbla Properties (No 24) Pty Ltd	881–891 South Dowling Street, Waterloo	Ongoing
VPA/2013/64	D/2013/821 – Monetary contribution of \$106,500 towards community infrastructure within the Green Square Town Centre and a monetary contribution of \$399,375 towards the stormwater drainage improvement projects in the Alexandra Canal catchment area	XR Property Developments Pty Ltd	154–156 Botany Road, Alexandria	Ongoing
VPA/2013/65	S101749 – A through site link from East Circular Quay to Macquarie Street, a colonnade to East Circular Quay and public domain improvement works	AMP and Mirvac	71–79 Macquarie Street, Sydney	Ongoing
VPA/2013/66	D/2014/1521 – Affordable housing, dedication and construction of a road, creation and registration of a through site link and easement and exceedance of BASIX targets	Denwol Glebe Pty Ltd	87 Bay Street, Glebe	Ongoing
VPA/2013/67	R/2013/30 – Dedication of 24,295 square metres of land to be remediated for the public domain, roads and plazas, works in-kind for essential infrastructure and public domain, public access to the retail car park for visitors to the planned community facility in the Civic Plaza, appointment of a Place Manager/Travel Coordinator for four years and design and construction of any buildings to be capable of being fully connected to green infrastructure space heating and cooling and hot water, non-potable recycled water and automated waste collection	Urban Growth NSW and Mirvac Projects Pty Ltd and Leighton Properties	956–960 Bourke Street, Zetland	Ongoing
VPA/2013/68	S088527 & S1069469 – Dedication and construction of public domain work, through-site links, dedication of air stratum, public access easements, heritage conservation work and public art	AMP Capital Office and Industrial Pty Ltd	50 Bridge Street, Sydney	Ongoing
VPA/2013/69	D/2013/1947 – Monetary contribution of \$1,052,967 for community infrastructure in Green Square Town Centre, dedication and embellishment of land for roads, pedestrian connections, public access easements and public domain work	Hatbands Pty Ltd	511–515 Botany Road, Zetland	Executed
VPA/2013/70	D/2014/1757 – Monetary contribution of \$1,631,135 for community infrastructure in Green Square Town Centre, dedication and embellishment of land for roads, footpaths and associated public domain work and public access easements	GMNT Properties Pty Ltd	501–509 Botany Road, Zetland	Executed
VPA/2013/71	D/2013/554 – Provision of a creative hub and rehearsal space on Levels 2–6	Greenland Holding Group	115–119 Bathurst Street, Sydney	Ongoing
VPA/2013/74	D/2013/1163 – Dedication of 985.9sqm and the construction of portions of Sam Sing St and Archibald Ave and a monetary contribution of \$131,000 towards community infrastructure in Green Square Town Centre	HF Lachlan Pty Ltd	11B Lachlan Street, Waterloo	Exhibited

Legislative Requirements

Environmental Planning and Assessment Act 1979 No. 203 (continued)

Application No.	Description of works	Other party to VPA	Primary street address	Status
VPA/2013/75	D/2013/685 – Monetary contribution of \$36,990 for community infrastructure in Green Square Town Centre and a monetary contribution of \$138,713 for stormwater improvement projects in the Alexandra Canal catchment	Windmill Property Investments Pty Ltd	74 Mitchell Road, Alexandria	Exhibited
VPA/2013/76	D/2013/648 – Dedication and embellishment of 101.1sqm of land for footpath widening to Murray and Amelia Streets and a monetary contribution of \$475,096 for community infrastructure in Green Square Town Centre	Icelake Holdings Pty Ltd	8 Amelia Street, Waterloo	Exhibited
VPA/2013/78	D/2013/320 – Monetary contribution of \$216,980 towards community infrastructure	Parklane Group Pty Ltd	63–85 Victoria Street, Beaconsfield	Executed
VPA/2013/8	D/2011/1298 – Dedication and embellishment of 3.8ha land for open space, the transfer of 1,000sqm of land for affordable housing and housing of people with a disability, the transfer and refurbishment of 500sqm of land for a community centre, public domain works and essential infrastructure and a monetary contribution of \$8,250,000	Mirvac Harold Park Pty Ltd	10 Maxwell Road, Forest Lodge	Ongoing
VPA/2013/80	D/2012/1568 – Dedication and embellishment of 101sqm of land for public domain improvements and the removal and undergrounding of power lines and a monetary contribution of \$124,700 towards community infrastructure	Epsom Property Group Pty Ltd	1–3 Dunning Avenue, Rosebery	Ongoing
VPA/2013/81	D/2013/1150 – Land dedication and embellishment of 1,288sqm for public domain improvements to McEvoy, George and Allen Streets and a monetary contribution of \$1,736,845 towards community infrastructure	Karimbla Properties (No 30) Pty Ltd	40–46 McEvoy Street, Waterloo	Ongoing
VPA/2013/83	R/2013/29 Dedication and embellishment of 27sqm of land for footpath, 189sqm of land for the extension of Emanuel Lane and construction of a pedestrian path and cycleway, 1,965sqm of land for public road, construction of a pedestrian through-site link and a monetary contribution of \$1,014,630	Bridgehill Zetland Pty Ltd	105–115 Portman Street, Zetland	Ongoing
VPA/2013/86	D/2013/1871 – Dedication of the front 2.4m of land for new footpath at a value of \$7,608 works in-kind in dedicated land with a value of \$12,031 and a monetary contribution of \$198,671 towards works in Green Square Town Centre.	Valuesuites Property Green Square Pty Ltd	16 O’Riordan Street, Alexandria	Ongoing
VPA/2013/87	D/2013/1362 – Construction and dedication of a through-site link and a monetary contribution of \$201,012 for community infrastructure	Multitech Constructions Pty Ltd	6–10 Rothschild Avenue, Rosebery	Ongoing
VPA/2015/13	D/2014/1265 – Monetary contribution of \$587,039 for community infrastructure	Polaris Holdings Rosebery Pty Ltd	50–86 Dunning Avenue, Rosebery	Exhibited
VPA/2015/14	D/2014/895 – Land dedication and construction of new roads and public domain works	JQZ Six Pty Ltd	40A O’Dea Avenue, Waterloo	Executed
VPA/2015/16	D/2014/1198 – Monetary contribution of \$395,100 for community infrastructure	Swarovski Australia Pty Ltd	23–25 Rosebery Avenue, Rosebery	Exhibited

Legislative Requirements

Environmental Planning and Assessment Act 1979 No. 203 (continued)

Application No.	Description of works	Other party to VPA	Primary street address	Status
VPA/2015/17	D/2014/1028 – Monetary contribution of \$620,303 for community infrastructure	Immerse On William Pty Ltd	1–9 William Street, Alexandria	Executed
VPA/2015/18	D/2014/1300 – Monetary contribution of \$341,050 for community infrastructure	Alpha Tria Pty Ltd	713–715 Elizabeth Street, Waterloo	Exhibited
VPA/2015/19	D/2012/1823 – Land dedication of 1,983sqm and construction of new roads and public domain works, a monetary contribution of \$385,141 towards future public domain infrastructure	Erskin Fcp Pty Ltd	Unit 35–35B/1A Coulson Street, Erskineville	Ongoing
VPA/2015/21	D/2014/1928 – Land dedication of 2,214m ² of a 1.4m wide strip along Epsom Road for road widening for the future Fuse Street and the future Rose Valley Way, Works in kind to embellish land dedication to a value of \$3,197,469.	Karimbla Construction Services (NSW) Pty Ltd	84–92 Epsom Road, Zetland	Exhibited
VPA/2015/22	D/2014/1695 – Refurbishment of Jessie Street Gardens	Dexus Property Group	1 Macquarie Place, Sydney	Executed
VPA/2015/25	D/2014/1837 – Land dedication for Dunkeley Place, Hatter Lane, O’Dea Ave setbacks and the Rope Walk Park, works in kind to embellish dedicated lands and monetary contribution of \$961,680 for community infrastructure.	Crown W1 Pty Ltd	18 O’Dea Avenue, Waterloo	Executed
VPA/2015/27	D/2013/1203 – Monetary contribution of \$1,046,900 for community infrastructure	Chosen Group Pty Ltd	39–47 Mentmore Avenue, Rosebery	Executed
VPA/2015/3	D/2015/154 – Land dedication and construction of new roads and public domain works, a monetary contribution of \$40,525 for a portion of the future pedestrian link.	Golden Rain Development Pty Ltd	Units 21–34/ Factory 1A Coulson Street, Erskineville	Exhibited
VPA/2015/30	D/2015/218 – Monetary contribution of \$49,533 for community infrastructure	Terrace 74 Pty Ltd	74 Princess Avenue, Rosebery	Exhibited
VPA/2015/37	D/2014/399 – Monetary contribution of \$382,375 for community infrastructure	WG E17.02 Pty Ltd	92–94 Buckland Street, Alexandria	Exhibited
VPA/2015/41	D/2012/733 – Land dedication 900mm wide the full length of Wylde Street and construction of new footpath	Investec Wentworth	10 Wylde Street, Potts Point	Ongoing
VPA/2015/42	D/2014/500 – Monetary contribution of \$84,276 for community infrastructure	4 Rothschild Pty Ltd	4 Rothschild Avenue, Rosebery	Exhibited
VPA/2015/5	D/2013/830 – Dedication of 31.4sqm of land and construction of footpath widening	J & R Development Pty Ltd	437 Wattle Street, Ultimo	Executed

Government Information (Public Access) Act 2009 No 52

Part 7 Section 125

This report is the City's GIPA Act Annual Report for the period 1 July 2014 to 30 June 2015. It includes statistical information on formal access applications in the form required by Schedule 2 of the GIPA Regulation.

1. Review of proactive release program – Clause 7(a)

Under section 7(3) of the GIPA Act, the City must review its program for the release of government information to identify the kinds of information it holds that should in the public interest be made publicly available and that can be made publicly available without imposing unreasonable additional costs. This review must be undertaken at least once every 12 months.

The City's program for the proactive release of information involves:

- providing information through extensive publication on the City's website or through inspection of paper or electronic copies of information, which is not statutorily required to be provided
- maintaining and promoting to staff a practice of openness and accountability in relation to information and decision making, and
- identifying information that is requested most often, which can be made available in future by self-service arrangements.

During the reporting period, the City reviewed this program in part by collating summaries of information that have been published proactively, and that the City intends to publish.

Throughout the year, the City has proactively released information through a range of methods such as:

- Digitising City records – the City is continuing to invest in a digitisation program with a major focus on building and development application documents, which are the most commonly requested City records.

The target period in the past year has been 1997–2004. In the short term this will provide faster and easier access for staff to provide responses to requests for information from the public. It is anticipated these records will be made available to the public online in the future.

Last year it was reported that the proactive release program included cataloguing and scanning archival records that were most in demand or otherwise of high value/interest. This forms part of an ongoing digitisation program in preparation for making these records available through the Archives Investigator system on the City's website.

Significant progress has been made on this part of the program. Access is now available through Archives Investigator to approximately 110,000 archival records. These records consist of two major series: 19th Century correspondence; and Building Inspectors Cards. The cards contain a summarised history of each building application received by Council for the period 1908–1997.

- Reporting to the community about proposed development activities, policies and strategies through prominent display on the City's website, local print media and public exhibition notices, which invite community feedback during the decision making process including:
 - Bays Precinct Your Say
 - Energy Efficiency Master Plan (Sydney your Say)
 - Green Square Have Your Say
 - Sydney Your Say Glebe Skate Park Design

- Developing and publishing the following information on the City's website:
 - Local Area Profiles for Businesses – a new resource for the City's local business owners providing a structured summary of the key economic characteristics and unique features of each of our local areas
 - Updated information for international students – The City has updated the content on our website to provide resources and information for our international student community
 - Updated information on the Global Sydney marketing campaign – including a new Global Sydney promotional video with Chinese subtitles to showcase our commercial, creative, sustainable and multicultural attributes
 - The Cultural Policy and Action Plan – published in hard copy and on the City's website
 - Live Music and Performance Action Plan – published in hard copy and on the City's website, including content on Development Controls & Noise Building Code of Australia, Liquor Licensing, Audience and Sector Development, Student Rehearsal Program including venue details and booking information, Matching Grants for acoustic advice, and Cultural grants program for live music activity.
 - Culture Liaison Service contact details and service information
 - Residential Monitor – published on the City's LEARN pages which shows all residential development for each village.
 - Commercial Development Monitor – published on the City's LEARN pages which shows major commercial development across the city.

Legislative Requirements

- Advertising local City managed and community activities and events through printed media, videos/animations, online promotion, social media, YouTube and face to face at events. This includes proactive publication about the following initiatives:
 - Art & About
 - City Art
 - City Conversation
 - City of Sydney Refugee Welcome Zone
 - City Talks
 - CitySwitch
 - Living in Harmony 2015
 - NAIDOC Week
 - NSW Business Chamber Business Awards
 - Reconciliation Park
 - Seniors Week
 - Smart Green apartments
 - Strata Skills 101
 - Student Rehearsal Spaces
 - Sydney is Fashion
 - Youth Week
 - Zero Waste campaigns.
- Promoting environmental issues and events on the City website including:
 - Sydney Rides Festival
 - Green Reports
 - Residential Apartments Sustainability Plan
- Publishing new information about major development sites and major projects in the local government area including:
 - Ashmore precinct
 - Green Square
 - Harold Park.
- Provision of content for a number of corporate and sub-branded social media properties, namely: Facebook, Instagram, Twitter, Google+, and Linked In.

In the coming year the City plans to publish the Housing Audit as a web page. The Housing Audit is the annual audit of all dwelling and housing stock in the city.

A series of information sessions were provided to staff through divisional meetings on records management and information access to maintain and promote staff understanding of their roles and responsibilities in making information publically available.

As part of the Proactive Release Program the City reviewed the information that was being requested in both formal applications and informal access requests to identify patterns in the types of information being requested. The review found the majority of requests are related to development applications and decisions.

The component of the City's website that already provides access to much of this information was also reviewed to determine if the opportunity exists to improve information accessibility. As a result a project was initiated to redesign the public search interface for development application information to encourage self-service. This project is scheduled for delivery in the coming year.

2. Number of access applications received – Clause 7(b)

During the reporting period, the City received a total of 105 formal access applications (including withdrawn applications but not invalid applications).

3. Number of refused applications for Schedule 1 information – Clause 7(c)

During the reporting period, the City refused, each one in part, a total of four access applications, because the information requested was information referred to in Schedule 1 to the GIPA Act (Information for which there is conclusive presumption of overriding public interest against disclosure). None were refused in full.

4. Statistical information about access applications – Clause 7(d) and Schedule 2

Table A: Number of applications by type of applicant and outcome*								
	Access granted in full	Access granted in part	Access refused in full	Information not held	Information already available	Refuse to deal with application	Refuse to confirm/deny whether information is held	Application withdrawn
Media	0	3	0	0	0	0	0	2
Members of Parliament	0	0	0	0	0	0	0	0
Private sector business	0	0	0	0	0	0	0	8
Not-for-profit organisations or community groups	0	0	0	0	0	0	0	0
Members of the public (application by legal representative)	1	17	2	0	0	1	0	16
Members of the public (other)	7	14	1	1	0	4	0	30

* More than one decision can be made in respect of a particular access application. If so, a recording must be made in relation to each such decision. This also applies to Table B.

Table B: Number of applications by type of application and outcome								
	Access granted in full	Access granted in part	Access refused in full	Information not held	Information already available	Refuse to deal with application	Refuse to confirm/deny whether information is held	Application withdrawn
Personal information applications*	0	0	0	0	0	0	0	0
Access applications (other than personal information applications)	6	19	1	1	0	3	0	50
Access applications that are partly personal information applications and partly other	3	14	2	0	0	2	0	6

* A personal information application is an access application for personal information (as defined in clause 4 of Schedule 4 to the Act) about the applicant (the applicant being an individual).
The total number of decisions in Table B should be the same as Table A.

Table C: Invalid applications	
Reason for invalidity	Number of applications
Application does not comply with formal requirements (section 41 of the Act)	3
Application is for excluded information of the agency (section 43 of the Act)	0
Application contravenes restraint order (section 110 of the Act)	0
Total number of invalid applications received	3
Invalid applications that subsequently became valid applications	0

Legislative Requirements

Table D: Conclusive presumption of overriding public interest against disclosure: matters listed in Schedule 1 of the Act

	Number of times consideration used*
Overriding secrecy laws	0
Cabinet information	0
Executive Council information	0
Contempt	0
Legal professional privilege	4
Excluded information	0
Documents affecting law enforcement and public safety	0
Transport safety	0
Adoption	0
Care and protection of children	0
Ministerial code of conduct	0
Aboriginal and environmental heritage	0

* More than one public interest consideration may apply in relation to a particular access application and, if so, each such consideration is to be recorded (but only once per application). This also applies in relation to Table E.

Table E: Other public interest considerations against disclosure: matters listed in table to section 14 of the Act

	Number of occasions when application not successful
Responsible and effective government	3
Law enforcement and security	5
Individual rights, judicial processes and natural justice	35
Business interests of agencies and other persons	13
Environment, culture, economy and general matters	0
Secrecy provisions	1
Exempt documents under interstate Freedom of Information legislation	0

Table F: Timeliness	
	Number of applications
Decided within the statutory timeframe (20 days plus any extensions)	46
Decided after 35 days (by agreement with applicant)	3
Not decided within time (deemed refusal)	2
Total	51

Table G: Number of applications reviewed under Part 5 of the Act (by type of review and outcome)			
	Decision varied	Decision upheld	Total
Internal review	3	1	4
Review by Information Commissioner*	4	0	4
Internal review following recommendation under section 93 of Act	3	1	4
Review by NSW Civil and Administrative Tribunal	0	3	3
Total	10	5	15

* The Information Commissioner does not have the authority to vary decisions, but can make recommendation to the original decision-maker. The data in this case indicates that a recommendation to vary or uphold the original decision has been made.

Table H: Applications for review under Part 5 of the Act (by type of applicant)	
	Number of applications
Applications by access applicants	11
Applications by persons to whom information the subject of access application relates (see section 54 of the Act)	0

Table I: Applications transferred to other agencies under Division 2 of Part 4 of the Act (by type of transfer)	
	Number of applications transferred
Agency-initiated transfers	0
Applicant-initiated transfers	0

Legislative Requirements

City of Sydney Act 1988

Section 63 (3)

In 2014/15 the City received donations for a total of \$4,000 relating to public space improvements towards planting of trees.

The payments of \$1000 each are for memorial trees planted in the City's parks or public domain. One tree per donation as follows:

- Pamela Ann Richards – Sydney Red Gum planted at Glebe Foreshore on 3 April 2015
- WRACC Association (NSW) – Illawarra Flame Tree to be planted in Hyde Park South on 30 September 2105
- Ruth McConville – Sydney Red Gum planted at Redfern Park on 30 April 2015
- Shan Fu – Jacaranda planted in Hyde Park North on 12 June 2015.

Capital Expenditure Guidelines Dec 2010 – Division of Local Government Department of Premier and Cabinet

Section 12

In compliance with the Capital Expenditure Guidelines Dec 2010 issued by the Office of Local Government of NSW, in 2014/15 the following capital works projects meet the criteria for reporting:

- Green Square Community Facilities and Public Domain, Former South Sydney Hospital Site (SSHS)
- Sydney Town Hall, Clock Tower (Stage 1) and External Refurbishment (Stage 2)
- Green Square Aquatic Centre and Gunyama Park
- Green Square Community Library and Plaza
- Alexandra Canal Depot

Council's corporate sponsorship policy

All sponsorships, noting the name of the sponsor, and the sponsorship asset sponsored in the financial year 2014/15 are listed below.

2014/15 City Events Partners

ART & ABOUT SYDNEY

2DayFM – Southern Cross Austereo	Media Partner
Fairfax Media	Media Partner
Time Out Australia	Media Partner
World Square	Associate Partner
The Star	Associate Partner

SYDNEY CYCLEWAYS PROGRAM

MiTAC Australia	Associate Partner
2DayFM – Southern Cross Austereo	Media Partner

CHRISTMAS

American Express	Principal Partner
Westfield	Leadership Partner
GPO Sydney	Associate Partner
Seven Network	Media Partner
Time Out Australia	Media Partner
2DayFM – Southern Cross Austereo	Media Partner

SYDNEY NEW YEAR'S EVE

Telstra	Leadership Partner
Ford Motor Company	Associate Partner
Production Resource Group	Support Partner
Technical Direction Co	Support Partner
Carlton & United Breweries	Connect Partner
Coca-Cola Amatil	Connect Partner
De Bortoli Wines	Connect Partner
Brown-Forman	Connect Partner
Interface Flooring	Connect Partner
Scarborough Wine Co.	Connect Partner
Sofitel Sydney Wentworth	Connect Partner
The Menzies Sydney	Connect Partner
The P.A. People	Connect Partner
2DayFM – Southern Cross Austereo	Media Partner
Twitter	Media Partner
APN Outdoor	Media Partner
SHFA	Government Partner

CHINESE NEW YEAR

AYAM	Leadership Partner
The Star	Leadership Partner
VISA	Leadership Partner
China Southern Airlines	Associate Partner
Sydney Airport	Associate Partner
Hong Kong Economic & Trade Office	Support Partner
Harbour City Ferries	Connect Partner
Slater & Gordon	Connect Partner
Urban Walkabout	Connect Partner
SBS	Media Partner
Seven Network	Media Partner
Fairfax Media	Media Partner
Time Out Australia	Media Partner
TVB	Media Partner
2DayFM – Southern Cross Austereo	Media Partner
SHFA	Government Partner

Total revenue made up of cash and value-in-kind: over \$3.4 million.

Public Interest Disclosures Act 1994

The City has developed a Fraud and Corruption Internal Reporting Policy to bring an organisation-wide approach to managing reporting on fraud and corruption. The policy is modelled on the NSW Ombudsman's guidelines and model policy, and applies to all officials of the City. The policy was revised and endorsed by the City of Sydney Council in June 2014.

The policy ensures that as a public authority, the City meets its responsibilities when receiving, assessing and dealing with public interest disclosures (PIDs) under section 6D of the Public Interest Disclosures Act 1994 (the Act).

A number of actions were taken by the City to make staff aware of the Fraud and Corruption Internal Reporting Policy, and the protections under the Act for a person who makes a PID. The actions include: awareness to staff during induction training; email messages to staff; links on the City's Intranet site; and messages in the staff newsletter.

Under section 31 of the Act, the City is required to prepare an annual report on its statistics on PIDs.

Between 1 July 2014 and 30 June 2015 no public officials made a PID to the City, no PIDs were received, and no PIDs were finalised.

Carers (Recognition) Act 2010 No. 20

Part 2 Section 8

Supporting employees who are recognised carers is one way the City demonstrates its commitment to a workplace that promotes diversity, is free of discrimination and where employees interact with each other in a way that is consistent with the City's values.

The City's goal is to respond to the diverse and changing needs of employees who are recognised carers with flexible, inclusive and sustainable support that is regularly tracked.

In 2014/15 key activities undertaken to meet the City's obligations under the Carers (Recognition) Act included:

1. Research and development of a toolkit for employees recognised as carers and their managers to enable them to work together to define the needs of the carer and the business and operational needs. The draft toolkit includes:
 - Carer Self-assessment Tool for employees to use to discuss their needs with their managers
 - Template for a Recognised Carer Plan which documents agreed actions and regular reviews and balances the needs of all the stakeholders and ensures ongoing effectiveness
 - Customised carers' resource pack.

The toolkit will be implemented during 2015/16.

2. Briefing of HR Business Partners to enable them to provide advice and support to carers and their managers while promoting awareness and understanding across the organisation.
3. Review of policies and procedures to support a range of flexible work options that take account of the needs of employees who are recognised carers.
4. Communication to employees to ensure they are aware of the City's obligations and the support available to employees who are recognised carers.



Sydney2030/Green/Global/Connected