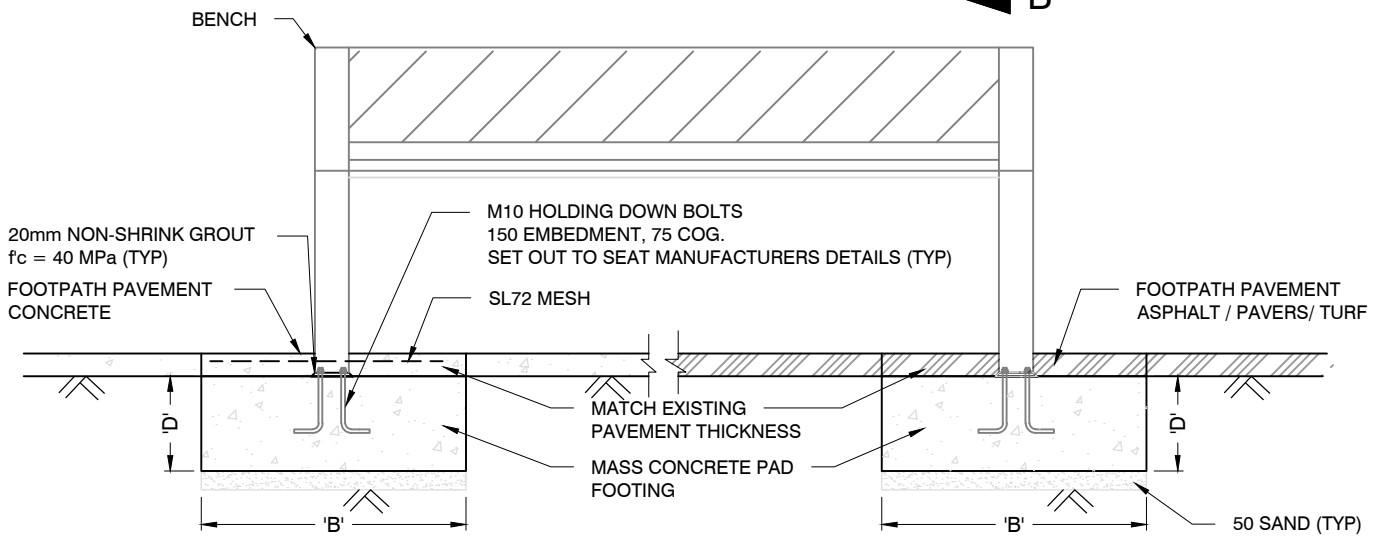
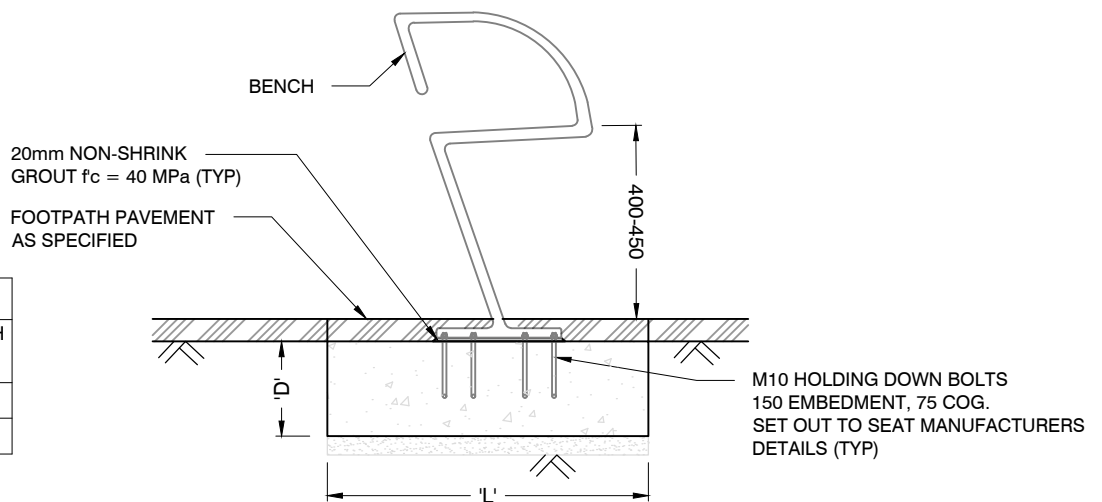


PLAN
1:20



SECTION A-A
1:20



SECTION B-B
1:20

| FOOTING SCHEDULE | | |
|------------------|-----------------|----------------|
| 'B' WIDTH (mm) | 'L' LENGTH (mm) | 'D' DEPTH (mm) |
| 700 | 900 | 250 |
| 700 | 800 | 300 |

NOTES:

1. CONCRETE GRADE $f_c = 32$ MPa.
2. ALL CONCRETE COVER TO BE 50 mm.
3. ALL DIMENSIONS IN MILLIMETRES UNLESS OTHERWISE STATED.
4. ALL HOLDING DOWN BOLTS, BASE PLATE AND BIN DETAILS, REFER TO MANUFACTURER'S SPECIFICATIONS.
5. THE STRUCTURAL ELEMENTS SHOWN ON THESE DRAWINGS HAVE BEEN DESIGNED FOR THE FOLLOWING LIVE LOADS:
 - (i) 1.0 kN/m APPLIED Laterally TO THE TOP EDGE OF THE SEAT.
 - (ii) 1.5 kN/m APPLIED VERTICALLY TO THE SEAT BENCH.
6. THE FOUNDATION HAVE BEEN DESIGNED FOR AN MINIMUM ALLOWABLE BEARING PRESSURE OF 150 kPa.