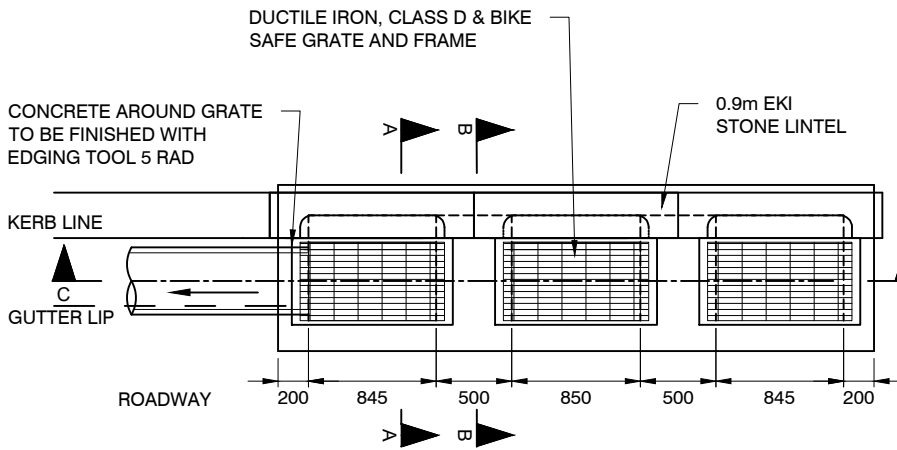


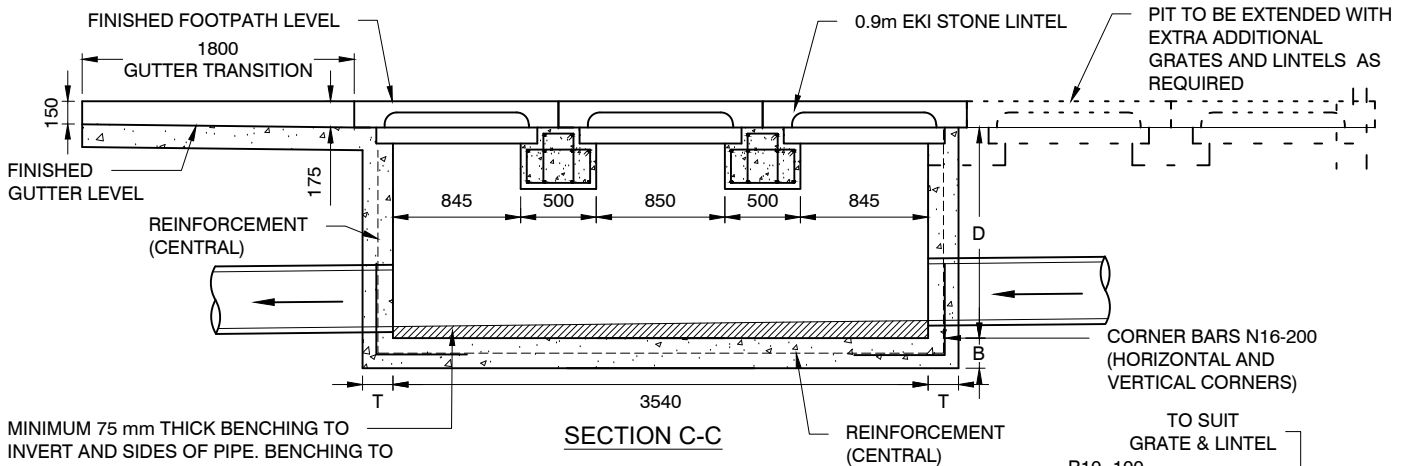
# NOTES:

1. CONCRETE STRUCTURES & REINFORCEMENT TO COMPLY WITH AS 3600, AS 4671 & CoS TECHNICAL SPECIFICATIONS.
2. ALL REINFORCEMENT TO BE GRADE 500
3. COMPRESSIVE STRENGTH OF CONCRETE AT 28 DAYS TO BE 32MPa.
4. MINIMUM LAP LENGTH IS TO BE 40 x BAR Ø UNLESS NOTED OTHERWISE.
5. ALL REINFORCEMENT SHALL BE PLACED IN MID-SECTION UNO.
6. MIN CONCRETE BEAM COVER SHALL BE 40mm
7. FOR ANY PENETRATION THROUGH WALLS AND SLABS GREATER THAN 200 SPACING, PROVIDE N12 TRIMMER BARS AND ADDITIONAL N12 REPLACEMENT BARS ON EACH SIDE.
8. 100mmØ SUBSOIL DRAINAGE PIPE 3.0m LONG WRAPPED IN FABRIC SOCK TO BE PROVIDED IN PIPE TRENCHES ADJACENT TO INLET PIPES.
9. PROVIDE STEP IRONS FOR PITS DEEPER THAN 1.0 m IN ACCORDANCE WITH STANDARD STEP IRONS DRAWING.
10. GRATES SHALL BE BICYCLE SAFE AND HAVE MAXIMUM INLET CAPACITY. ALL GRATES MUST BE APPROVED BY THE CITY'S REPRESENTATIVE.
11. DRAINAGE PIPE TO BE MINIMUM 375Ø CLASS 4 REINFORCED CONCRETE PIPE.
12. ALL DIMENSIONS IN MILLIMETRES UNLESS OTHERWISE STATED.

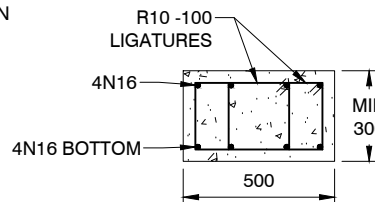


## PLAN

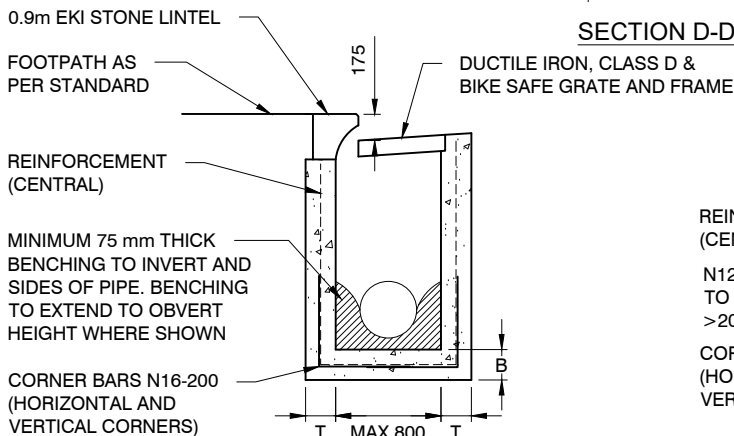
D	B	T	REINFORCEMENT
750 - 1300	200	150	SL82
1300 - 2400	230	200	SL102
>2400	AS PER STRUCTURAL ENGINEERS SPECIFICATION		



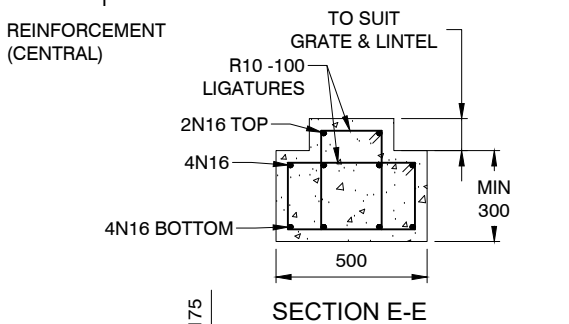
MINIMUM 75 mm THICK BENCHING TO INVERT AND SIDES OF PIPE. BENCHING TO EXTEND TO OBVERT HEIGHT WHERE SHOWN



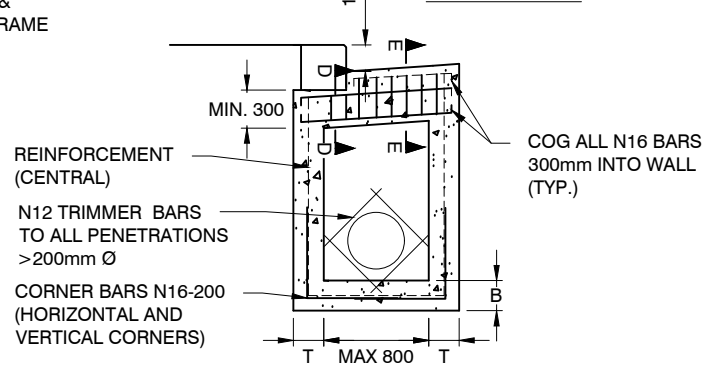
## SECTION D-D



## SECTION A-A



## SECTION E-E



## SECTION B-B