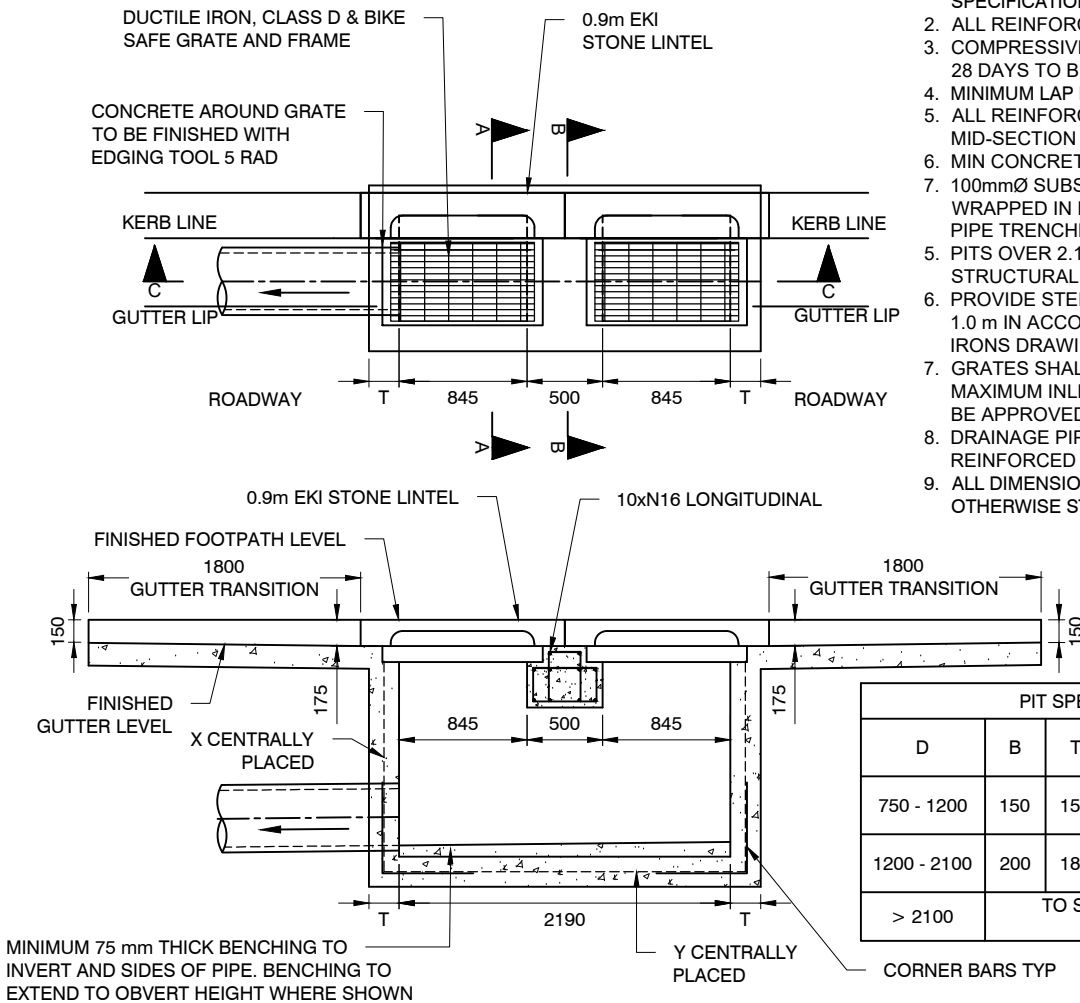


## PLAN

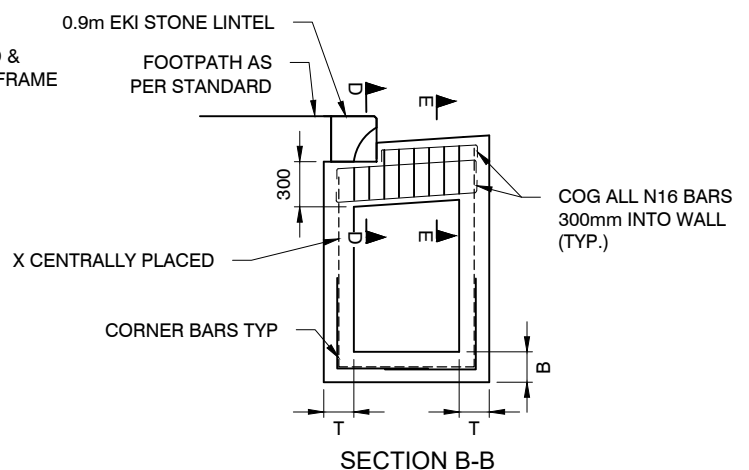
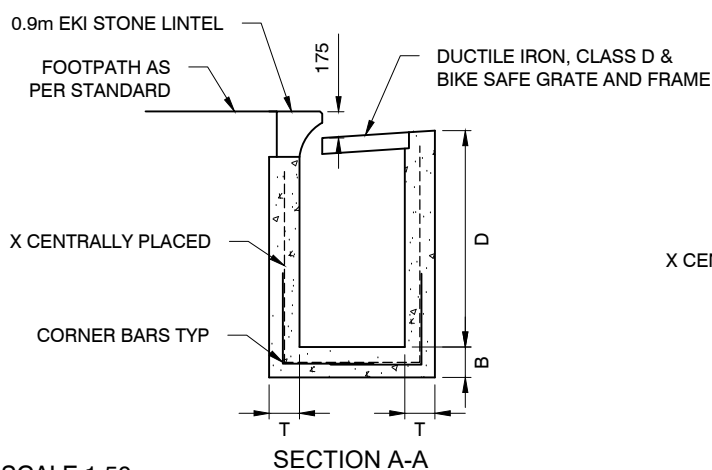
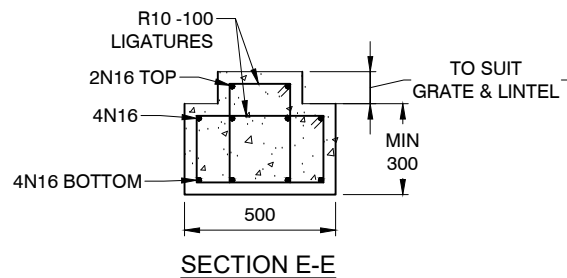
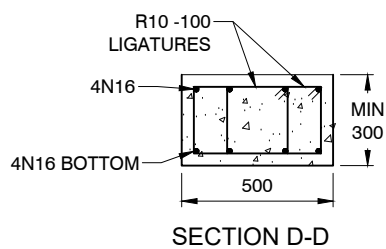


- NOTES:

1. CONCRETE STRUCTURES & REINFORCEMENT TO COMPLY WITH AS 3600, AS 4671 & CoS TECHNICAL SPECIFICATIONS.
2. ALL REINFORCEMENT TO BE GRADE 500
3. COMPRESSIVE STRENGTH OF CONCRETE AT 28 DAYS TO BE 32MPa.
4. MINIMUM LAP LENGTH IS TO BE 40 x BAR Ø UNO.
5. ALL REINFORCEMENT SHALL BE PLACED IN MID-SECTION UNO.
6. MIN CONCRETE BEAM COVER SHALL BE 40mm
7. 100mmØ SUBSOIL DRAINAGE PIPE 3.0m LONG WRAPPED IN FABRIC SOCK TO BE PROVIDED IN PIPE TRENCHES ADJACENT TO INLET PIPES.
8. PITS OVER 2.1m IN DEPTH TO BE DESIGNED BY STRUCTURAL ENGINEER.
9. PROVIDE STEP IRONS FOR PITS DEEPER THAN 1.0 m IN ACCORDANCE WITH STANDARD STEP IRONS DRAWING.
10. GRATES SHALL BE BICYCLE SAFE AND HAVE MAXIMUM INLET CAPACITY. ALL GRATES MUST BE APPROVED BY THE CITY'S REPRESENTATIVE.
11. DRAINAGE PIPE TO BE MINIMUM 375Ø CLASS 4 REINFORCED CONCRETE PIPE.
12. ALL DIMENSIONS IN MILLIMETRES UNLESS OTHERWISE STATED.

PIT SPECIFICATIONS					
D	B	T	X	Y	CORNER BARS
750 - 1200	150	150	SL82	SL81	N12-300 L 500
1200 - 2100	200	180	SL81	SL81	N12-200 L 600
> 2100	TO STRUCTURAL ENGINEERS SPECIFICATION				

## SECTION C-C



SCALE 1:50