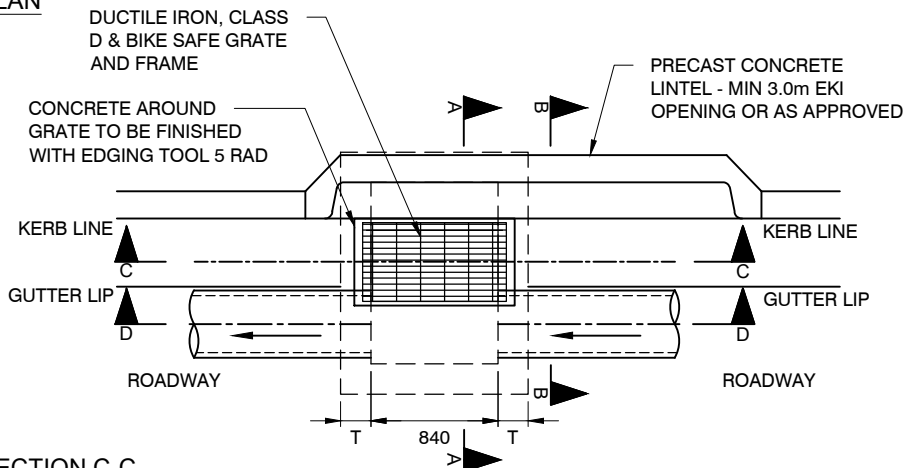
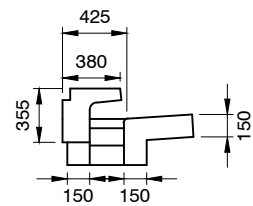


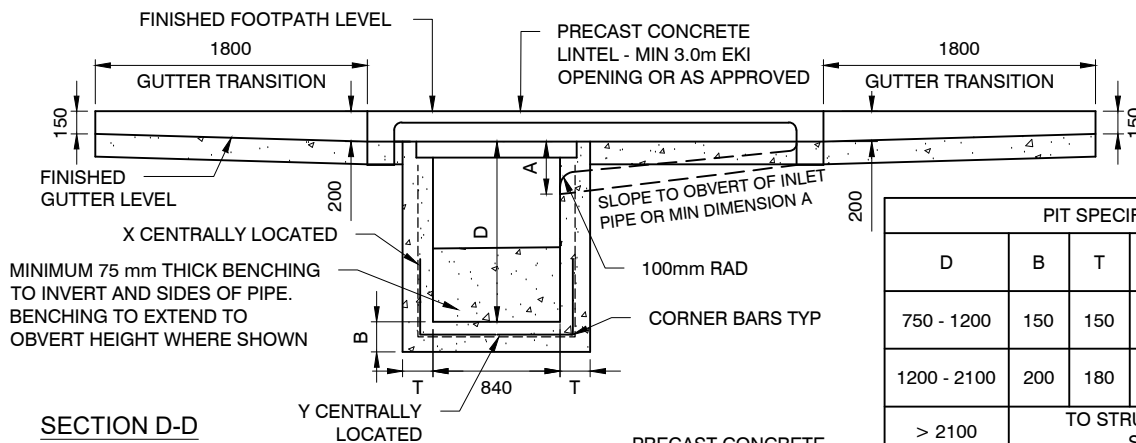
## PLAN



## SECTION B-B

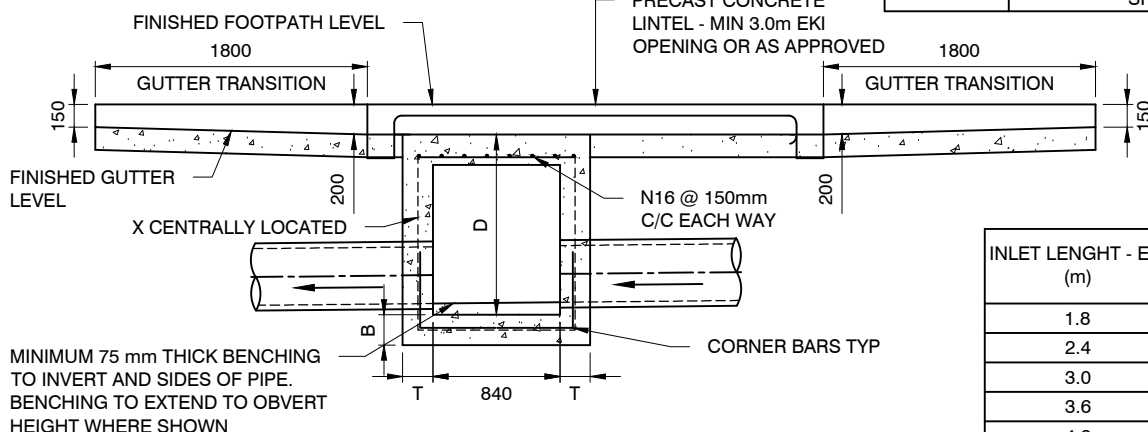


## SECTION C-C



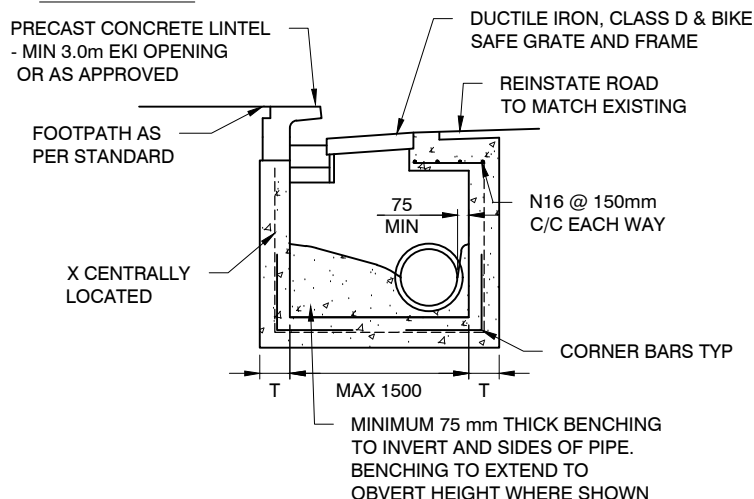
PIT SPECIFICATIONS					
D	B	T	X	Y	CORNER BARS
750 - 1200	150	150	SL82	SL81	N12-300 L 500
1200 - 2100	200	180	SL81	SL81	N12-200 L 600
> 2100	TO STRUCTURAL ENGINEERS SPECIFICATION				

## SECTION D-D



INLET LENGTH - EKI (m)	MINIMUM DIMENSION A (mm)
1.8	250
2.4	300
3.0	400
3.6	450
4.2	500

## SECTION A-A



### NOTES:

1. COMPRESSIVE STRENGTH OF CONCRETE AT 28 DAYS TO BE 32MPa.
2. 100mmØ SUBSOIL DRAINAGE PIPE 3.0m LONG WRAPPED IN FABRIC SOCK TO BE PROVIDED IN PIPE TRENCHES ADJACENT TO INLET PIPES.
3. PROVIDE STEP IRONS FOR PITS DEEPER THAN 1.0 m IN ACCORDANCE WITH STANDARD STEP IRONS DRAWING.
4. PITS OVER 2.1m IN DEPTH TO BE DESIGNED BY STRUCTURAL ENGINEER.
5. GRATES SHALL BE BICYCLE SAFE AND HAVE MAXIMUM INLET CAPACITY. ALL GRATES MUST BE APPROVED BY THE CITY'S REPRESENTATIVE.
6. CONCRETE STRUCTURES & REINFORCEMENT TO COMPLY WITH AS 3600, AS 4671 & CoS TECHNICAL SPECIFICATIONS.
7. DRAINAGE PIPE TO BE MINIMUM 375Ø CLASS 4 REINFORCED CONCRETE PIPE.
8. ALL DIMENSIONS IN MILLIMETRES UNLESS OTHERWISE STATED.

SCALE 1:50