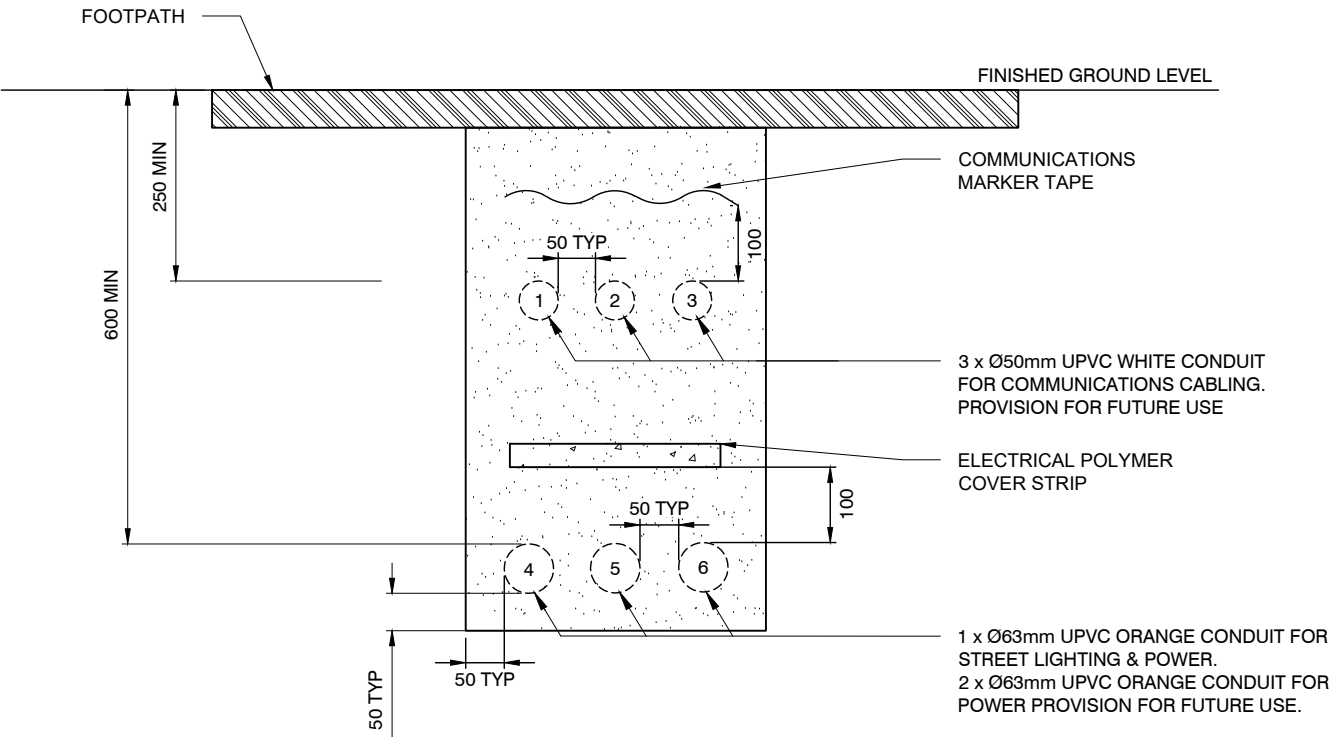
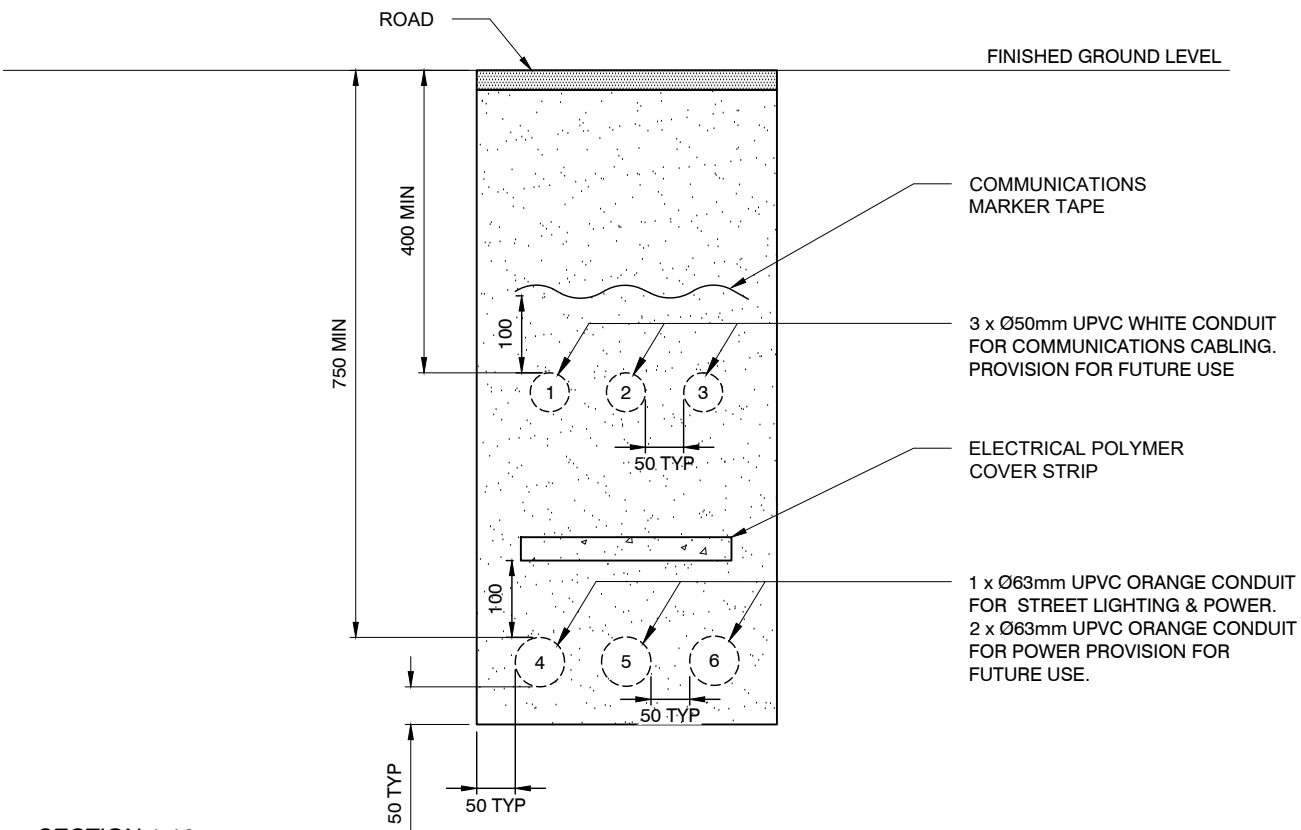


TYPICAL ELECTRICAL & COMMS  
CONDUIT ARRANGEMENT FOOTPATH & GARDEN AREA

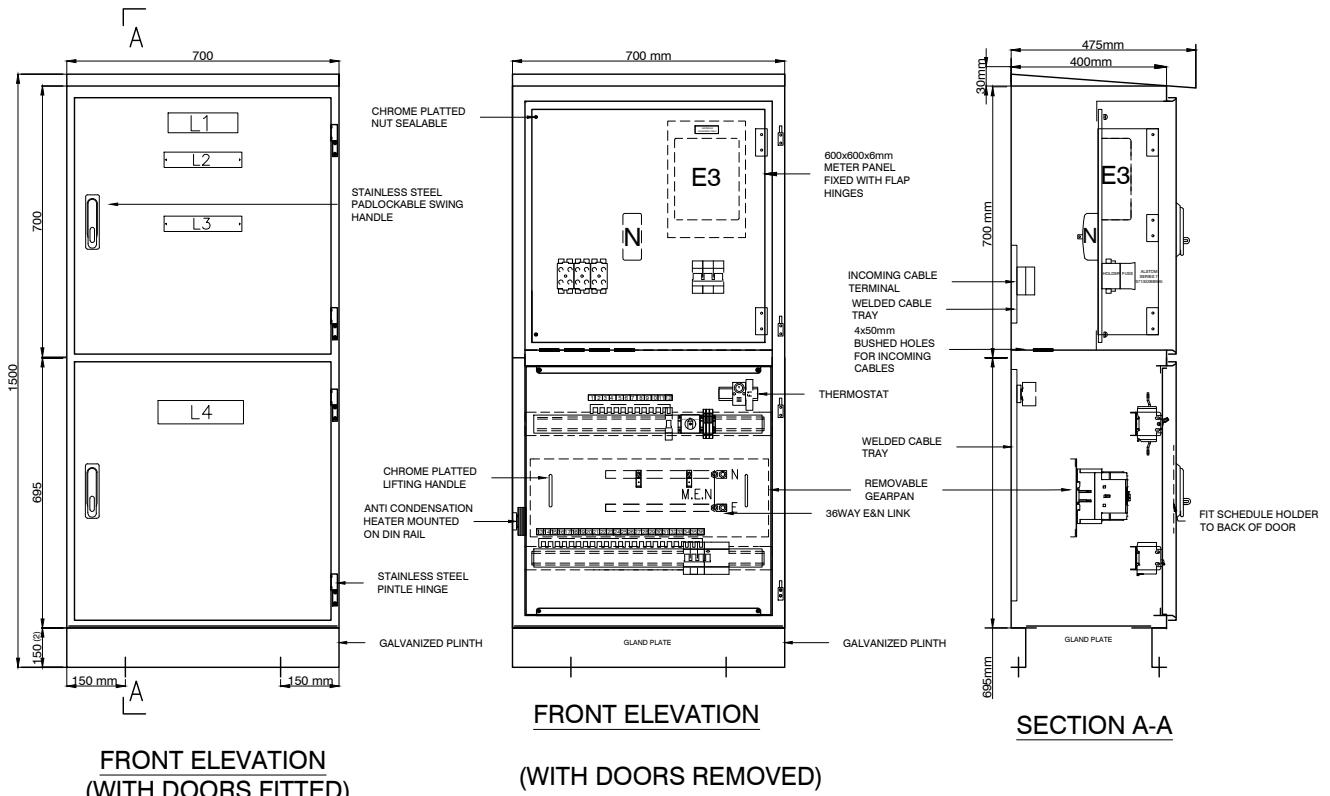


TYPICAL ELECTRICAL & COMMS  
CONDUIT ARRANGEMENT (ROAD)

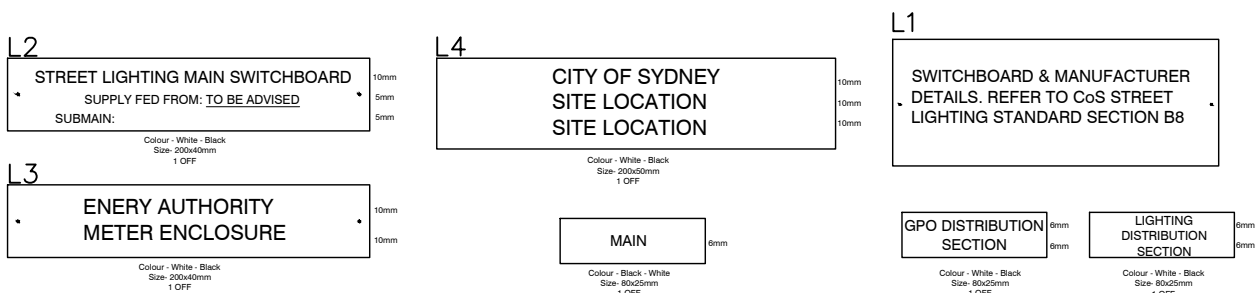


SECTION 1:10

NOTE: ALL DIMENSIONS IN MILLIMETRES UNLESS OTHERWISE STATED

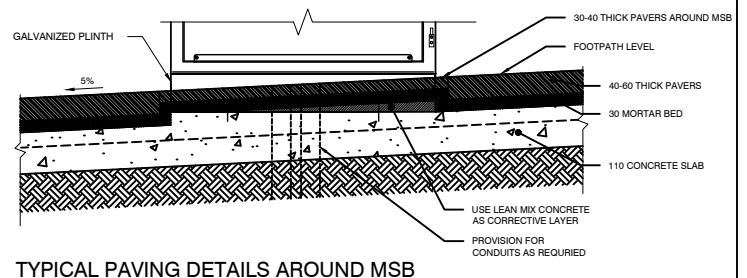


MINOR EQUIPMENT SCHEDULE				
ITEMS	DESCRIPTION	REFERENCE	PART NO.	QTY
SERVICE FUSES	IPD SERIES 7 SERVICE FUSE BACK CONNECTION + FUSE LINK	#S71002BBWAI+RHLF100		3
THREE PHASE METER	SUPPLIED AND FITTED BY OTHERS			1
SERVICE METER NEUTRAL LINK	NETEC SEALABLE LINKS 3x35 & 2x10mm	#AN100S-535-B		1
MAIN SWITCH CIRCUIT BREAKER				1
3P 12-WAY COMB BUSBAR	3P 12-WAY 100A COMB BUSBAR WITH ENDCAP	#SN-A9XPH312		1
3P 24-WAY COMB BUSBAR	3P 12-WAY 100A COMB BUSBAR WITH ENDCAP	#SN-A9XPH324		1
36 WAY BRASS LINKS	36 WAY N&E BRIBAR LINKS	#DB-BRASSLINK-36		2
ANTI CONDENSATION HEATER	IPD - 15W ANTICONDENSATION HEATER	#RACP-15		1
THERMOSTAT	IPD - 100 - 250V AC 1NC THERMOSTAT	#TRT-10A230V-NC		1
A-O-M SWITCH	TELUX DIN RAIL MOUNTED 20A NON-LOCABLE 2P SWITCH	#M10HEU1-SMA		1
TERMINAL	TERMINAL 2.5MM GREY	#ACC-TERM-GREY-2.5		3
SS316 PADLOCKABLE HANDLE	SWING HANDLE PADLOCKABLE - SS316	#GEN-HANDLE - SH-PL-316		2
MCB	1P 16A 6kA MCB C - CURVE	#SN-A9F44106		1
RCBO	3P 25A 6kA RCBO 30mA C Curve	#SN-A9F44350		1
RCBO	2P 20A 6kA RCBO 30mA C-CURVE			1



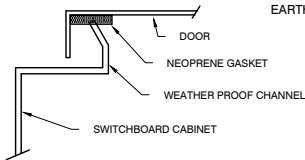
#### NOTES:

1. TO BE READ IN CONJUNCTION WITH DRAWING 5.1.4
2. 75 mm GALVANIZED CHANNEL PLINTH MAY BE USED WITH CONCRETE / ASPHALT FOOTWAY
3. CONCRETE PLINTH SHALL BE USED INSTEAD OF GALVANISED PLINTH IF LONGITUDINAL / CROSS FALL EXCEEDS 5%
4. ALL DIMENSIONS IN MILLIMETRES UNLESS OTHERWISE STATED



CONSTRUCTION NOTES:

CONSTRUCTION:	FLOOR MOUNTED, FRONT CONNECTED, RATED AT 100A
CABINET:	2mm 316 STAINLESS STEEL, FOLDED & WELDED/MODULAR BOLTED CONSTRUCTION
DOORS AND ESCUTCHEONS:	1.5mm GRADE 316 STAINLESS STEEL
OTHER BRACKETS:	1.6mm ZINC SEALED MILD STEEL MIN
BOTTOM GLAND PLATE:	6mm METER PANEL
FORM OF SEGREGATION:	FORM 1 - TO AS3439.1 - 2002
DEGREE OF PROTECTION:	IP56 - REFER TO WEATHER PROOFING DETAIL
FAULT RATING:	6kA FOR 1 SECOND
FINISH:	
PREPERATION:	DE-SCALE & DE-GREASE
EXTENRAL COLOUR:	NATURAL FINISH
INTERNAL COLOUR:	NATURAL FINISH
REMOVALBLE GEAR PANS & ESCUTCHEON:	GLOSS WHITE
PLINTH:	GALVANISED
LABELS:	ENGRAVED PLASTIC LAMINATE
FIXING:	DOUBLE SIDED ADHESIVE & STAINLESS STEEL SCREWS
COLOUR:	AS SHOWN
CONTROL WIRING:	MINIMUM 1.5mm Cu V90
POWER WIRING:	MINIMUM 2.5mm Cu RE110 DOUBLE INSULATED
WIRE MARKERS:	STANDARD FERRULES
TERMINATIONS:	BARE CABLE ENDS. WHERE TERMINALS REQUIRE LUGS, BOOTLACE FERRULES OR PRE-INSULATED RING LUGS. <u>FORK LUGS SHALL NOT BE USED</u>
COLOUR:	240 AC - PHASE COLOURED NEUTRAL - BLACK EARTH - GREEN/YELLOW

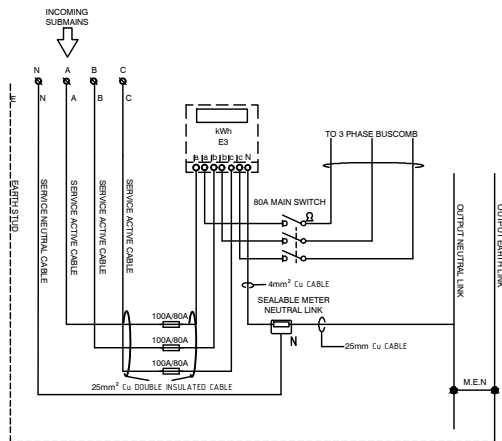


WEATHER PROOFING DETAIL

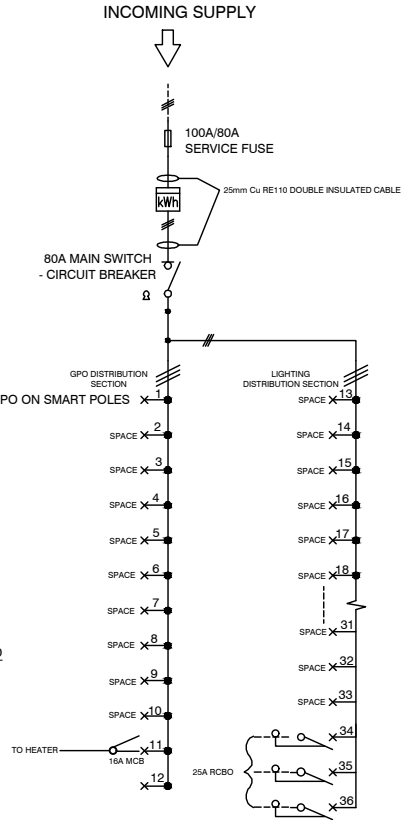
1 OFF

NOTES:

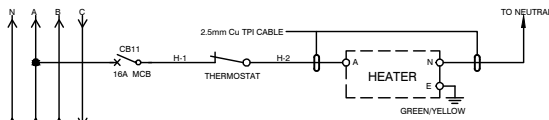
MAIN ISOLATOR TO BE LOCATED IN THE ENERGY AUTHORITY SECTION. BUS COMB TO BE FIXED SECURELY TO THE BUSBAR.



E3 METER WIRING SCHEMATIC



SINGLE LINE DIAGRAM

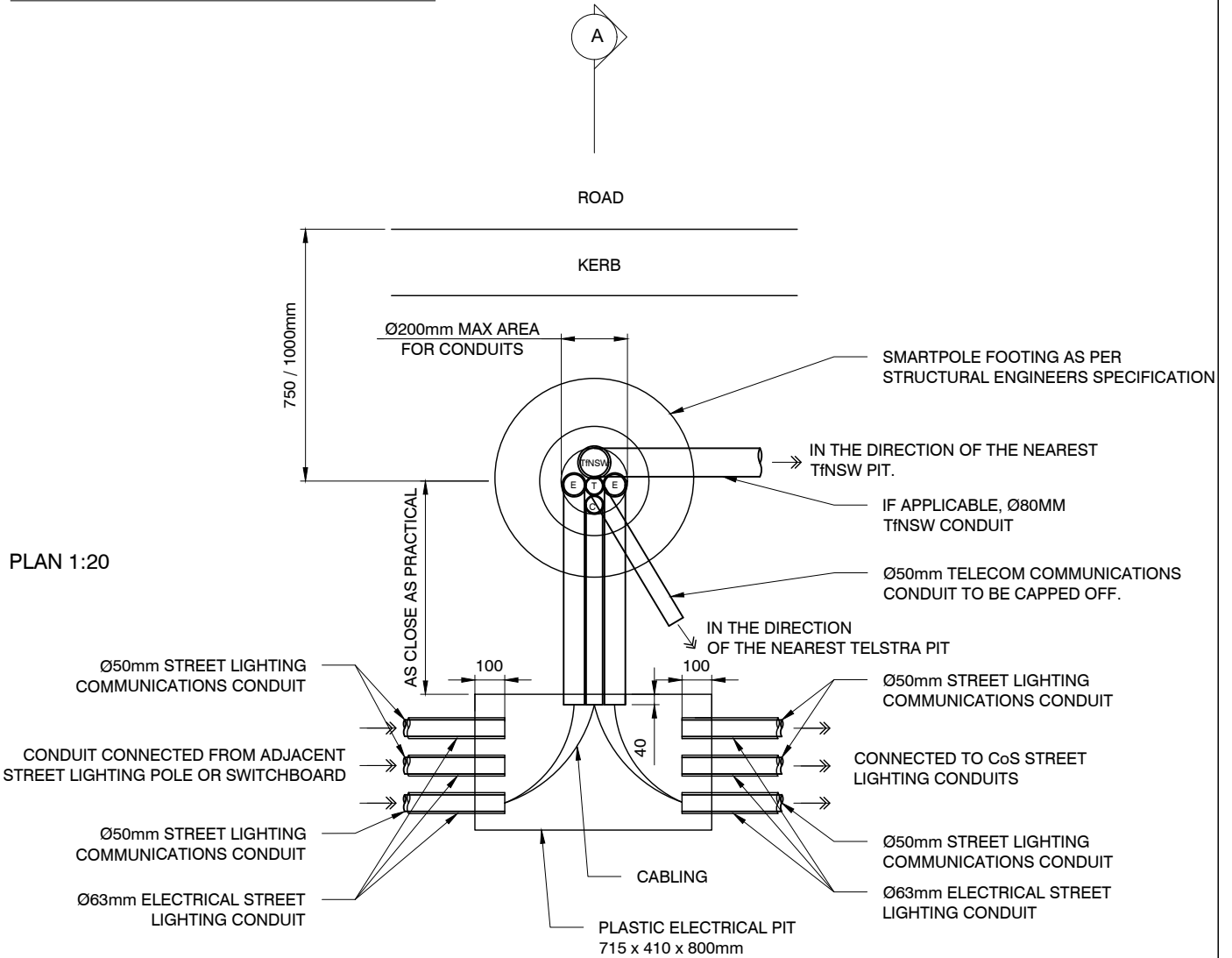


ANTICONDENSATION HEATER SCHEMATIC DIAGRAM

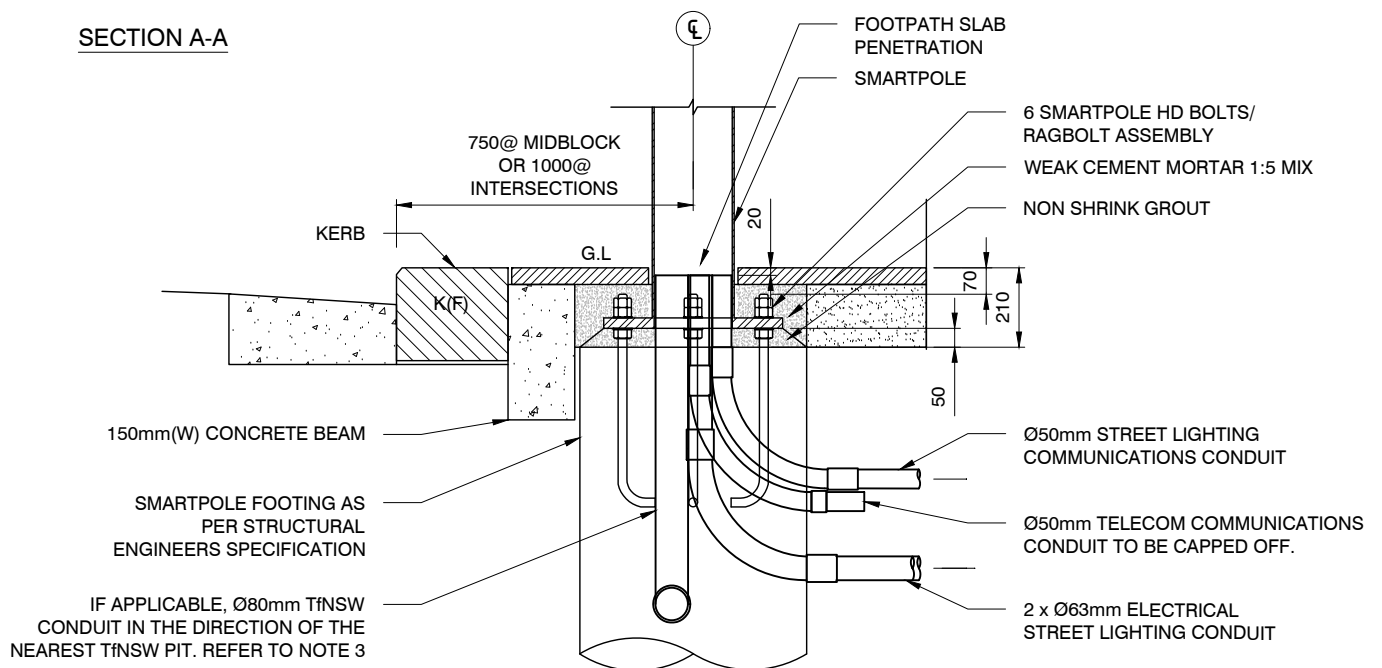
NOTES:

1. TO BE READ IN CONJUNCTION WITH DRAWING 5.1.3
2. ALL DIMENSIONS IN MILLIMETRES UNLESS OTHERWISE STATED.

# CONDUIT ARRANGEMENTS AT POLE BASE

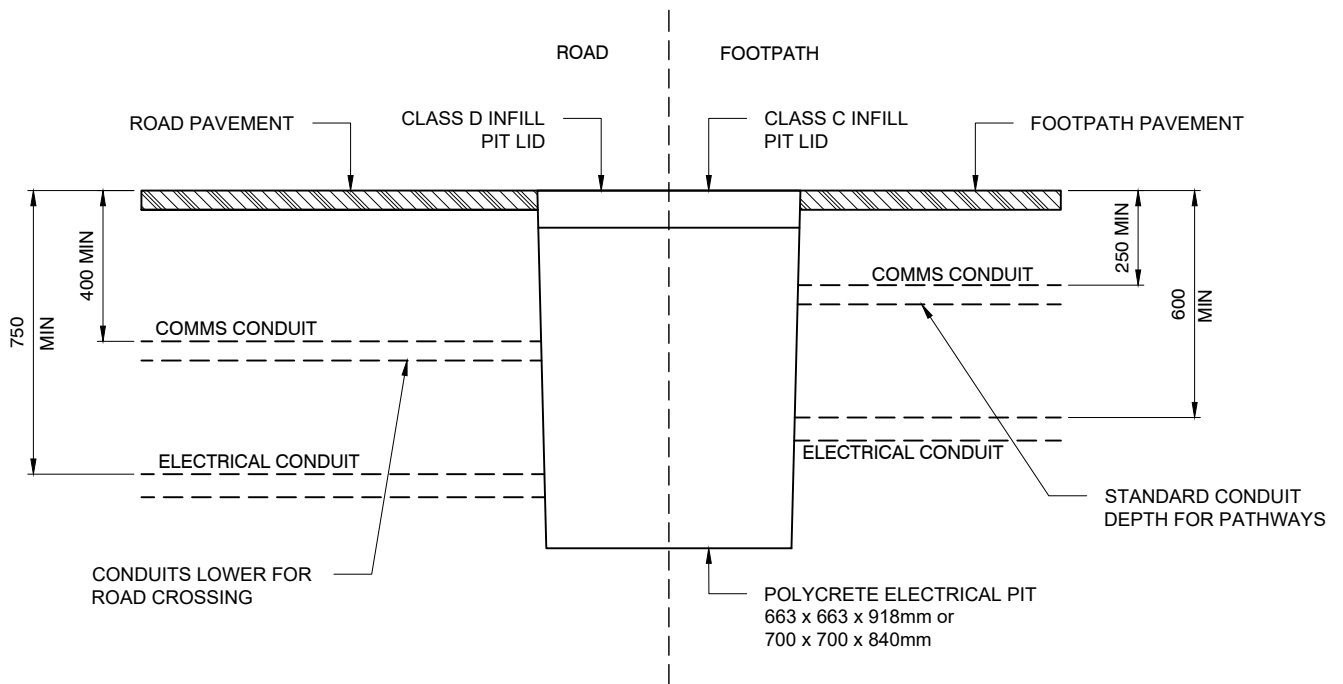


## SECTION A-A



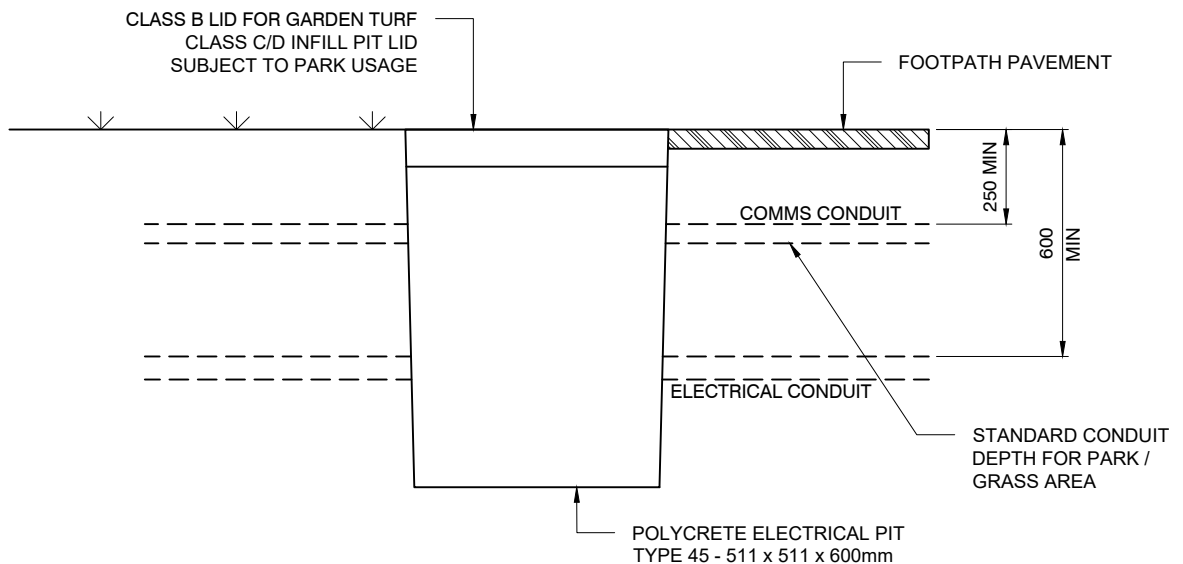
SECTION 1:20

NOTE: ALL DIMENSIONS IN MILLIMETRES UNLESS OTHERWISE STATED



## ELECTRICAL PIT ARRANGEMENT FOR ROAD / FOOTPATH

SCALE 1:20

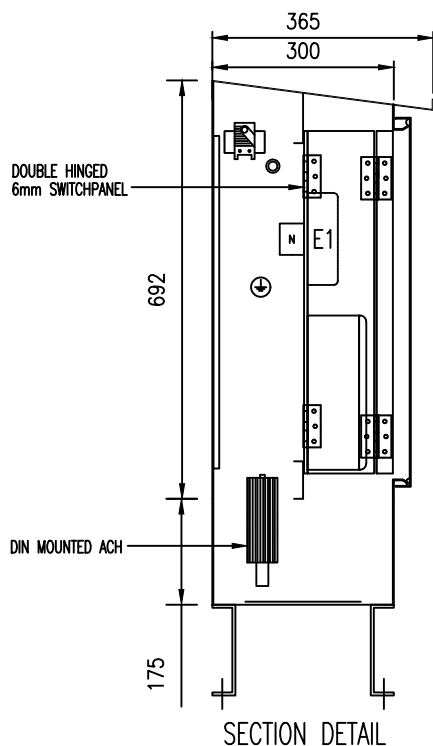
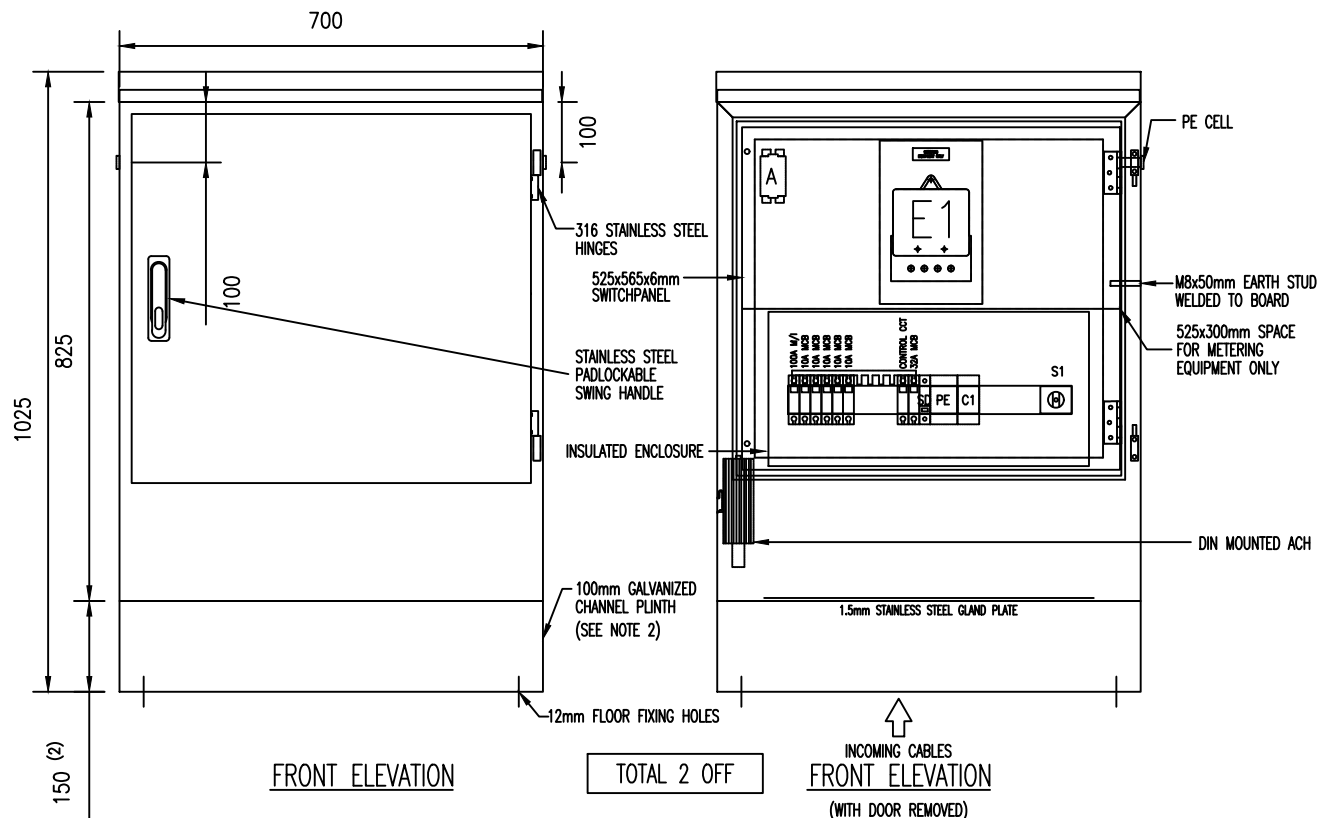


## ELECTRICAL PIT ARRANGEMENT FOR PARKS

SCALE 1:20

### NOTES:

1. PIT LID IS TO HAVE A 75mm DIAMETER STAINLESS STEEL DISC ENGRAVED "CoS-Electrical" SET FLUSH WITH LID SURFACE USING EPOXY ADHESIVE. THIS DISC SHOULD BE SLIP RESISTANT.
2. REFER TO THE MANUFACTURER INSTALLATION INSTRUCTION FOR COMPLETE DETAILS
3. ALL DIMENSIONS IN MILLIMETRES UNLESS OTHERWISE STATED



### CONSTRUCTION NOTES:

#### CABINET:

1.5mm STAINLESS STEEL 316 GRADE

#### DOOR:

1.5mm STAINLESS STEEL 316 GRADE

#### PLINTH:

75mm x 38mm MILD STEEL CHANNEL

#### ESCUTCHEON & GEAR PAN:

1.5mm STAINLESS STEEL 316 GRADE

#### GLAND PLATES:

1.5mm STAINLESS STEEL 316 GRADE

#### FORM OF SEGREGATION:

FORM 1

#### DEGREE OF PROTECTION:

IP-66 - REFER TO WEATHER PROOFING DETAIL

#### FAULT RATING:

6KA

#### FINISH:

DE-SCALE & DE-GREASE

#### PREPARATION:

GRAIN FINISH

#### EXTERNAL COLOUR:

GRAIN FINISH

#### INTERNAL COLOUR:

GLOSS WHITE

#### BRACKETS:

HOT DIP GALVANISED

#### PLINTH:

ENGRAVED PLASTIC LAMINATE

#### LABELS:

DOUBLE SIDED ADHESIVE & SCREW FIXED

#### FIXING:

MAIN ISOLATOR - WHITE LETTERS ON BLACK

#### COLOUR:

WARNING, FIRE & LIFTS - WHITE LETTERS ON RED

OTHERS - BLACK LETTERS ON WHITE

#### CONTROL WIRING:

MINIMUM 1.5mm Cu V90

#### WIRE MARKERS:

SMB HARVAL STANDARD FERRULES

#### TERMINATIONS:

BARE CABLE ENDS. WHERE TERMINALS REQUIRE LUGS, BOOTLACE FERRULES

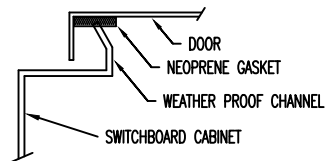
OR PRE-INSULATED RING LUGS.

240V AC - PHASE COLOURED

NEUTRAL - BLACK

EARTH - GREEN/YELLOW

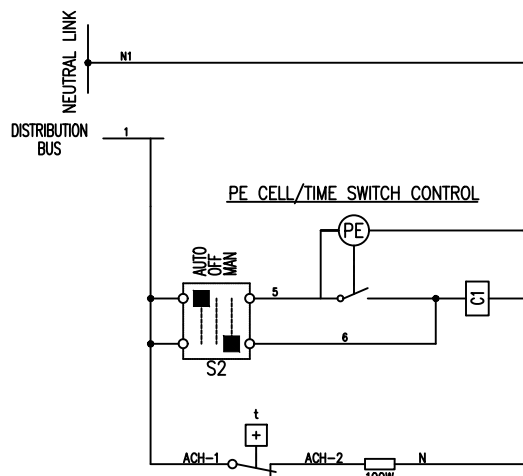
AC CONTROL CIRCUIT ACTIVE- RED



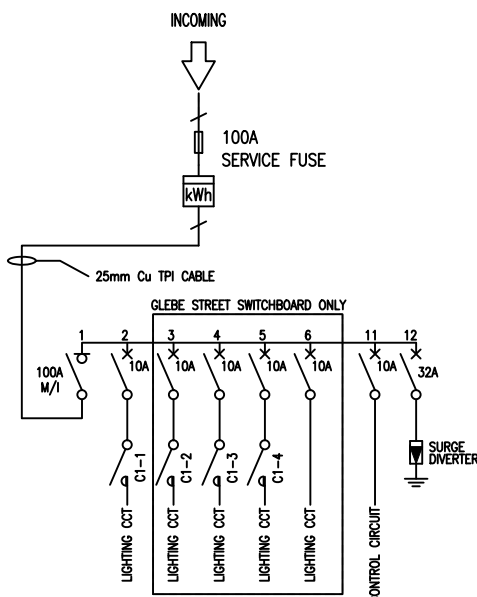
### NOTES:

1. TO BE READ IN CONJUNCTION WITH DRAWING 5.1.8
2. 75 mm GALVANIZED CHANNEL PLINTH MAY BE USED WITH CONCRETE / ASPHALT PAVING
3. ALL DIMENSIONS IN MILLIMETRES UNLESS OTHERWISE STATED.

EQUIPMENT SCHEDULE				
ITEMS	ITEMS INFORMATION		QTY	TOTAL
	DESCRIPTION	PART NUMBER		
SERVICE FUSE	IPD SERIES 7 SERVICE FUSE	ACC-FUS-C1002BBWA	1	2
	FITTED WITH FUSE LINK	ACC-FUS-LRHLF-100	1	2
SINGLE PHASE METER	SUPPLIED AND FITTED BY OTHERS		1	2
SEALABLE NEUTRAL LINK	NETEC SEALABLE LINK 100A	AN100S-535-B	1	2
DOOR SWING HANDLE	STAINLESS STEEL PADLOCKABLE SWING HANDLE	GEN-HANDLE-SH-PL-316	1	2
INSULATED ENCLOSURE	CLIPSAL 24 MODULE SURFACE MOUNTING INSULATED ENCLOSURE	SN-4CF24FD	1	2
1P 12-WAY COMB BUSBAR	SCHNEIDER 1P 12-WAY 80A COMB BUSBAR	SN-BUSCOMB12P	1	2
1P 100A ISOLATOR	SCHNEIDER 1P 100A ISOLATOR	SN-A9S66191	1	2
1P 32A MCB	SCHNEIDER 1P 32A MCB 6kA C-CURVE	SN-A9F44132	1	2
1P 10A MCB	SCHNEIDER 1P 10A MCB 6kA C-CURVE (GLEBE ST SW =7 & JONES ST SW=2)	SN-A9F44110	-	9
LIGHT SENSITIVE SWITCH	SCHNEIDER IC200 LIGHT SENSITIVE SWITCH COMPLETE WITH PRE-WIRED PE CELL	SN-152B4	1	2
4P CONTACTOR [C1]	SCHNEIDER 4P 25A N/O CONTACTOR 240V AC COIL	SN-A9C20B34	1	2
SELECTOR SWITCH [S1]	TELUX SURFACE MOUNT CHANGEOVER SWITCH ENGRAVED AUTO-OFF-MAN	BA-M10HSMAU1	1	2
SURGE DIVERTER	LDU GKSDL SINGLE PHASE SINGLE MODE 50kA SURGE DIVERTER	LD-GKSDL1-50-275	1	2
ANTI-CONDENSATION HEATERS	IPD- 240VAC 100W HEATER	IP-RACM-100	1	2
THERMOSTAT	IPD - THERMOSTAT 1 N/C 10A 230VAC	IP-TRT-10A230-NC	1	2



LIGHTING CONTROL CIRCUIT SCHEMATIC DIAGRAM



SINGLE LINE DIAGRAM

CITY OF SYDNEY MAIN SWITCHBOARD.  
LOCATION: #  
SUPPLY FED FROM : TO BE ADVISED  
SUBMAIN : 2-1Cx25mm Cu XLPE  
ASSET ID: TBA

Colour : White-Black  
Size : 200x40mm  
1 OFF

# ----- STREET OR ----- STREET

Manufactured by: MANUFACTURERE COMPANY NAME

Telephone: ----- e-mail: -----  
Drawing Reference: ----- Date of Manufacture: -----

Proudly Engineered & Manufactured in Australia

Colour : Blue-White-Blue  
Size : 180x50mm

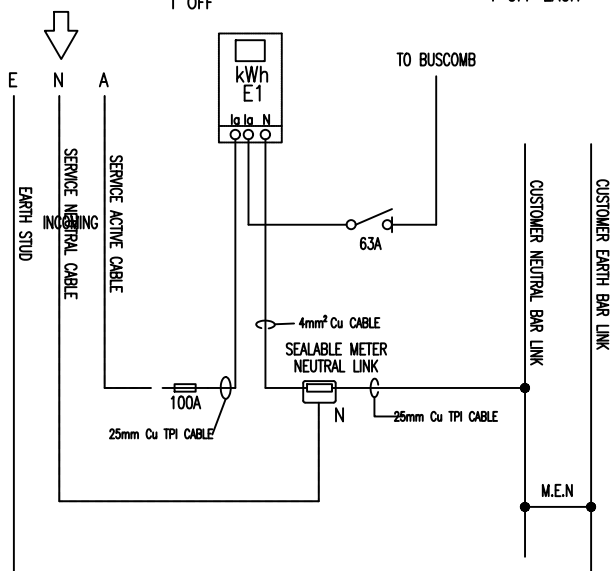
ELECTRICITY METER  
LOCATED BEHIND

Colour : White-Black  
Size : 120x30mm  
1 OFF

1 OFF

S1 C1

Colour : White-Black  
Size : 18x18mm  
6mm TEXT  
1 OFF EACH



E1 METER WIRING SCHEMATIC

#### NOTES:

1. TO BE READ IN CONJUNCTION WITH DRAWING 5.1.7
2. ALL DIMENSIONS IN MILLIMETRES UNLESS OTHERWISE STATED.