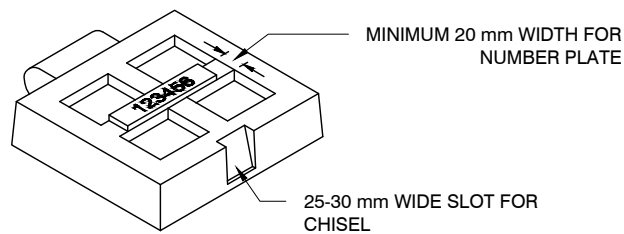
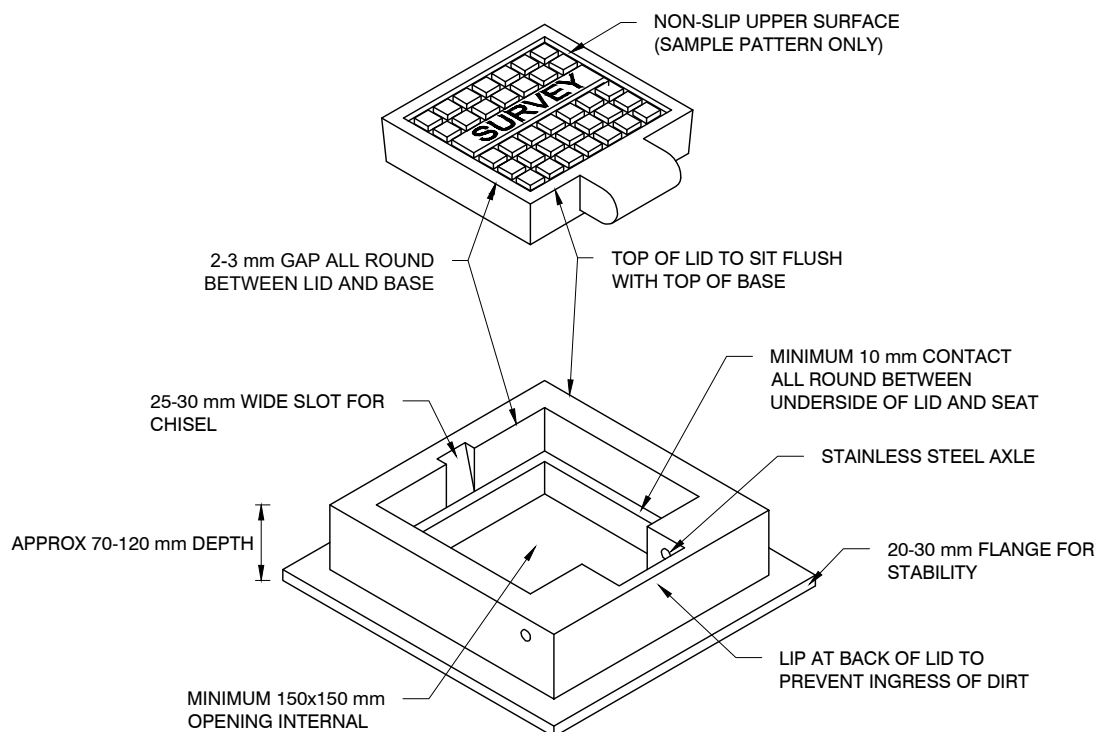




LID (UNDERSIDE)



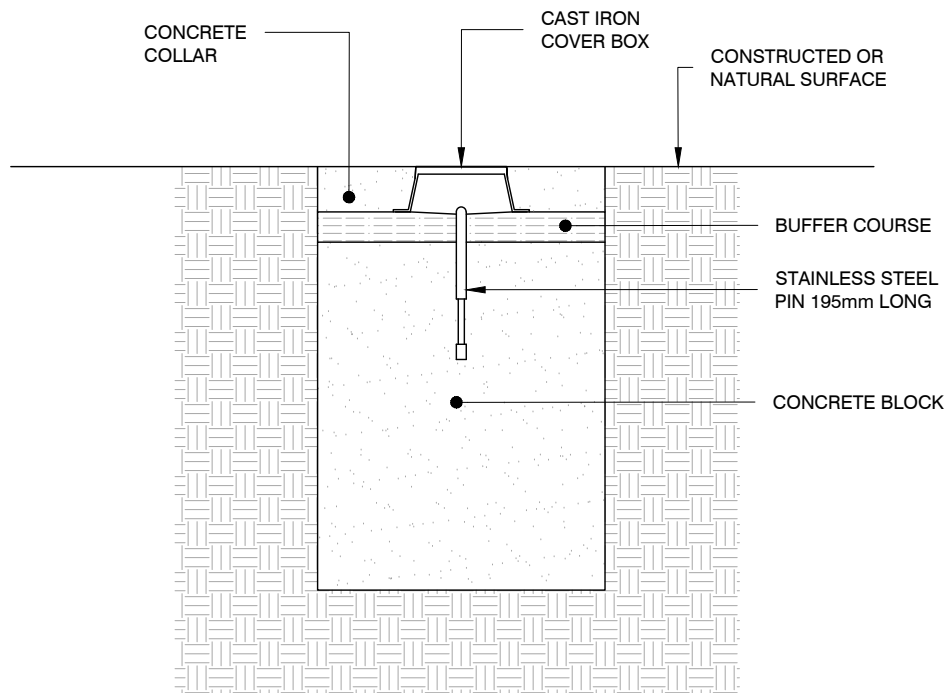
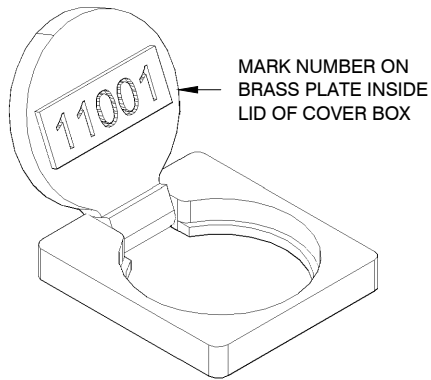
LID (TOPSIDE)



FRAME

SECTION 1:10

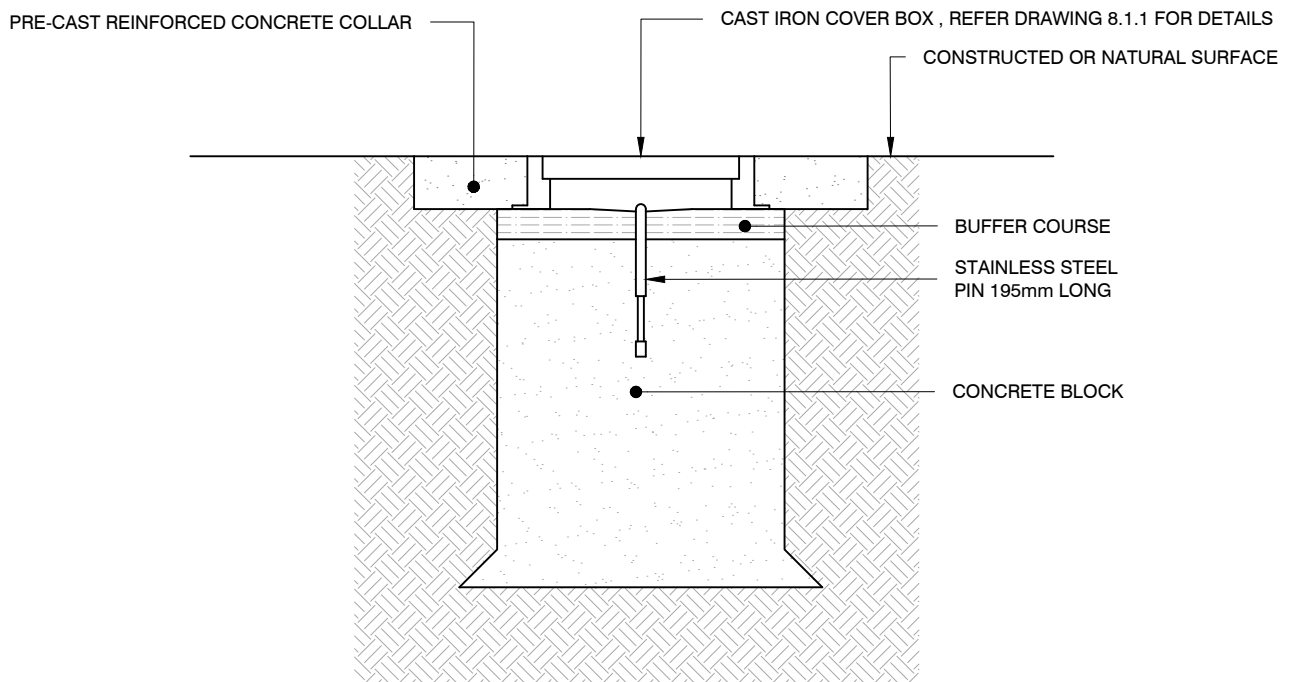
ALL DIMENSIONS IN MILLIMETRES UNLESS OTHERWISE STATED



SECTION 1:10

NOTES:

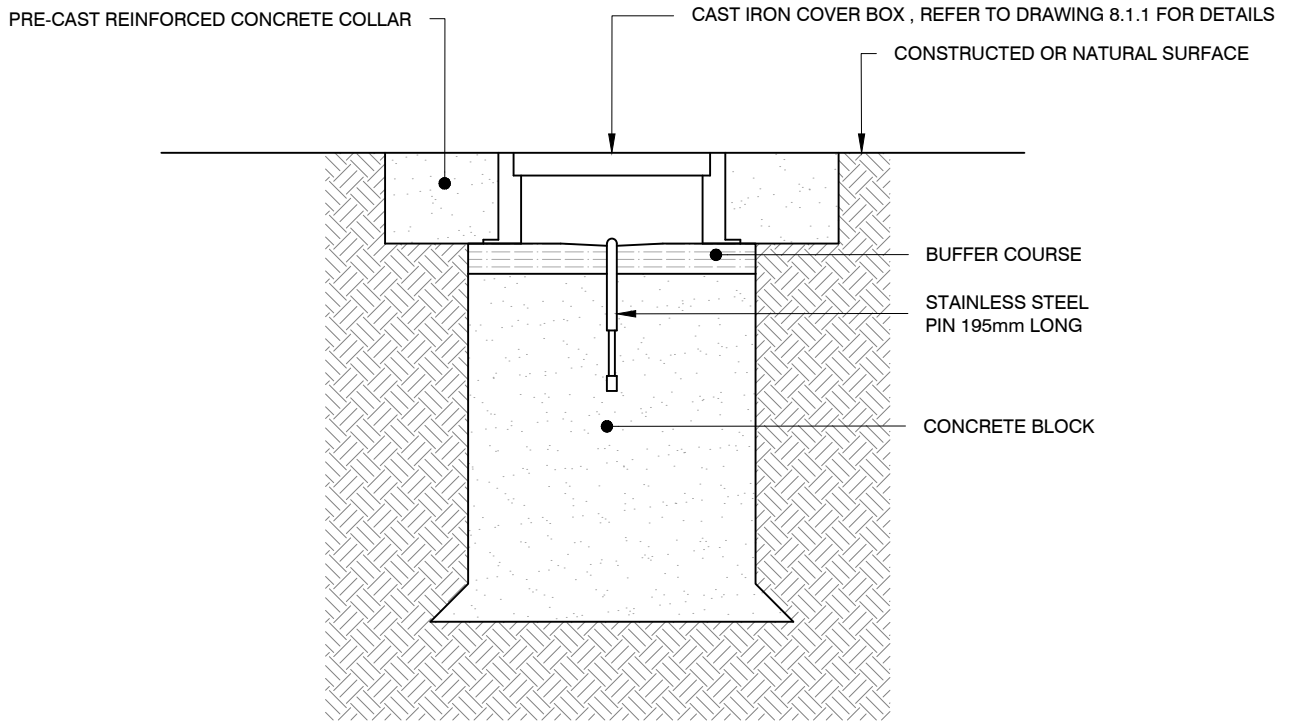
1. MINIMUM SIZE OF CONCRETE 460 mm DEEP BY 380 mm SQUARE AND ENLARGED AT THE BOTTOM. WHERE SOLID ROCK IS MET THE DEPTH MAY BE VARIED.
2. IN LOCALITIES WHERE THE GROUND IS UNSTABLE THE DIMENSIONS MUST BE INCREASED.
3. THE STAINLESS STEEL PIN IS TO PROTRUDE 50 mm ABOVE THE SURFACE OF THE CONCRETE BLOCK.
4. THE BUFFER COURSE IS TO BE A 50 mm LAYER OF CRUSHED BRICK, GRAVEL OR COARSE SAND.
5. ALL DIMENSIONS IN MILLIMETRES UNLESS OTHERWISE STATED



SECTION 1:10

NOTES:

1. MINIMUM SIZE OF CONCRETE 460 mm DEEP BY 380 mm SQUARE AND ENLARGED AT THE BOTTOM. WHERE SOLID ROCK IS MET THE DEPTH MAY BE VARIED.
2. IN LOCALITIES WHERE THE GROUND IS UNSTABLE THE DIMENSIONS MUST BE INCREASED.
3. THE STAINLESS STEEL PIN IS TO PROTRUDE 50 mm ABOVE THE SURFACE OF THE CONCRETE BLOCK.
4. THE BUFFER COURSE IS TO BE A 50 mm LAYER OF CRUSHED BRICK, GRAVEL OR COARSE SAND.
5. ALL DIMENSIONS IN MILLIMETRES UNLESS OTHERWISE STATED



SECTION 1:10

NOTES:

1. MINIMUM SIZE OF CONCRETE 460 mm DEEP BY 380 mm SQUARE AND ENLARGED AT THE BOTTOM. WHERE SOLID ROCK IS MET THE DEPTH MAY BE VARIED.
2. IN LOCALITIES WHERE THE GROUND IS UNSTABLE THE DIMENSIONS MUST BE INCREASED.
3. THE STAINLESS STEEL PIN IS TO PROTRUDE 50 mm ABOVE THE SURFACE OF THE CONCRETE BLOCK.
4. THE BUFFER COURSE IS TO BE A 50 mm LAYER OF CRUSHED BRICK, GRAVEL OR COARSE SAND.
5. ALL DIMENSIONS IN MILLIMETRES UNLESS OTHERWISE STATED