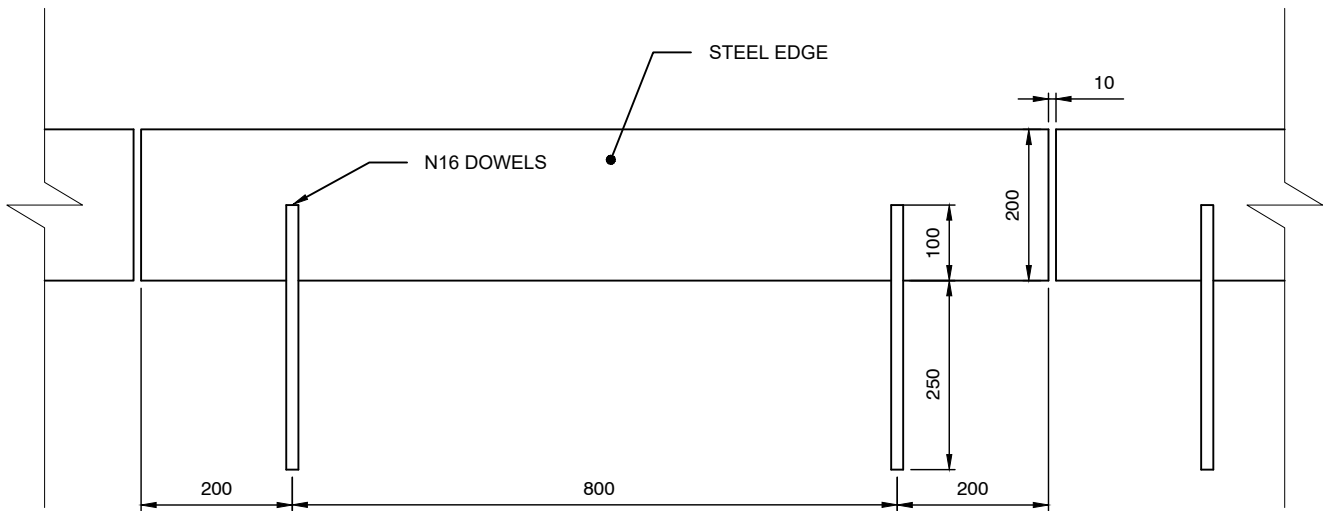


SECTION 1:10



ELEVATION 1:10

NOTES:

1. ALL STEELWORK TO BE HOT DIPPED GALVANISED.
2. ALL STEELWORK BELOW GROUND LEVEL TO BE PAINTED WITH TWO COATS OF BITUMINOUS PAINT.

NOTE: ALL DIMENSIONS IN MILLIMETRES UNLESS OTHERWISE STATED