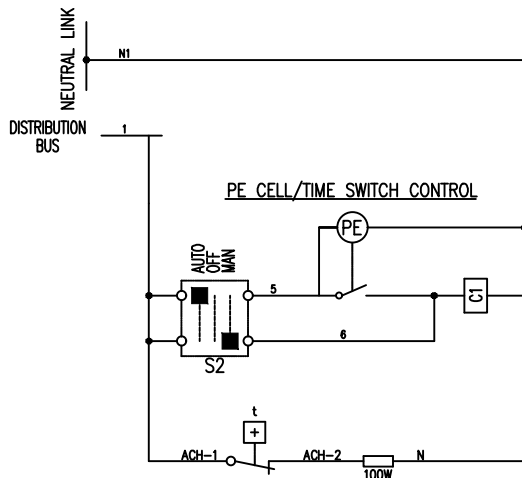
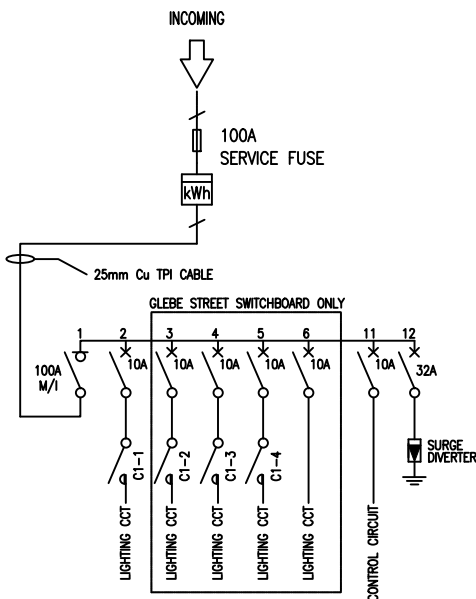


EQUIPMENT SCHEDULE				
ITEMS	ITEMS INFORMATION		QTY	TOTAL
	DESCRIPTION	PART NUMBER		
SERVICE FUSE	IPD SERIES 7 SERVICE FUSE	ACC-FUS-C1002BBWA	1	2
	FITTED WITH FUSE LINK	ACC-FUS-LRHLF-100	1	2
SINGLE PHASE METER	SUPPLIED AND FITTED BY OTHERS		1	2
SEALABLE NEUTRAL LINK	NETEC SEALABLE LINK 100A	AN100S-535-B	1	2
DOOR SWING HANDLE	STAINLESS STEEL PADLOCKABLE SWING HANDLE	GEN-HANDLE-SH-PL-316	1	2
INSULATED ENCLOSURE	CLIPSAL 24 MODULE SURFACE MOUNTING INSULATED ENCLOSURE	SN-4CF24FD	1	2
1P 12-WAY COMB BUSBAR	SCHNEIDER 1P 12-WAY 80A COMB BUSBAR	SN-BUSCOMB12P	1	2
1P 100A ISOLATOR	SCHNEIDER 1P 100A ISOLATOR	SN-A9S86191	1	2
1P 32A MCB	SCHNEIDER 1P 32A MCB 6KA C-CURVE	SN-A9F44132	1	2
1P 10A MCB	SCHNEIDER 1P 10A MCB 6KA C-CURVE (GLEBE ST SW =7 & JONES ST SW=2)	SN-A9F44110	-	9
LIGHT SENSITIVE SWITCH	SCHNEIDER IC200 LIGHT SENSITIVE SWITCH COMPLETE WITH PRE-WIRED PE CELL	SN-152B4	1	2
4P CONTACTOR [C1]	SCHNEIDER 4P 25A N/O CONTACTOR 240V AC COIL	SN-A9C20834	1	2
SELECTOR SWITCH [S1]	TELUX SURFACE MOUNT CHANGEDOVER SWITCH ENGRAVED AUTO-OFF-MAN	BA-M10H5MAU1	1	2
SURGE DIVERTER	LDU GKSDL SINGLE PHASE SINGLE MODE 50KA SURGE DIVERTER	LD-GKSDL1-50-275	1	2
ANTI-CONDENSATION HEATERS	IPD- 240VAC 100W HEATER	IP-RACM-100	1	2
THERMOSTAT	IPD - THERMOSTAT 1 N/C 10A 230VAC	IP-TRT-10A230-NC	1	2



LIGHTING CONTROL CIRCUIT SCHEMATIC DIAGRAM



SINGLE LINE DIAGRAM

CITY OF SYDNEY MAIN SWITCHBOARD
 LOCATION: #
 SUPPLY FED FROM : TO BE ADVISED
 SUBMAIN : 2-1Cx25mm Cu XLPE
 ASSET ID: TBA

Colour - White-Black
 Size - 200x40mm
 1 OFF

----- STREET OR ----- STREET

Manufactured by: MANUFACTURERE COMPANY NAME

Telephone: ----- e-mail: -----
 Drawing Reference: ----- Date of Manufacture: -----

Proudly Engineered & Manufactured in Australia

Colour : Blue-White-Blue
 Size : 180x50mm

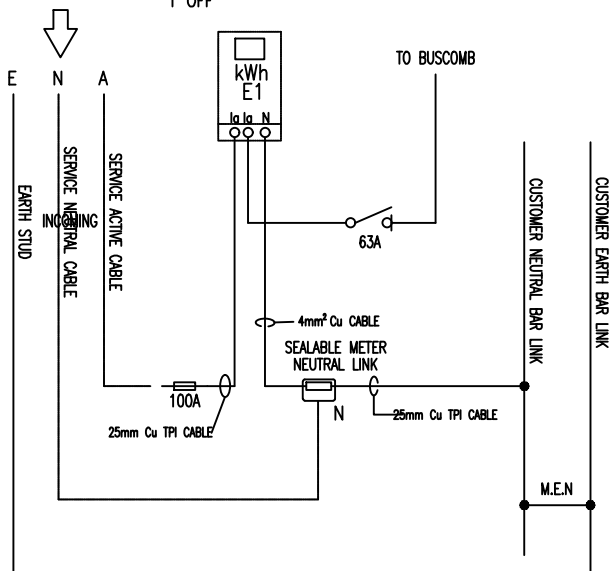
ELECTRICITY METER
 LOCATED BEHIND

Colour : White-Black
 Size : 120x30mm
 1 OFF

1 OFF

S1 C1

Colour : White-Black
 Size : 18x18mm
 6mm TEXT
 1 OFF EACH



E1 METER WIRING SCHEMATIC

NOTE:

TO BE READ IN CONJUNCTION WITH DRAWING 5.1.7

NOTE: ALL DIMENSIONS IN MILLIMETRES UNLESS OTHERWISE STATED