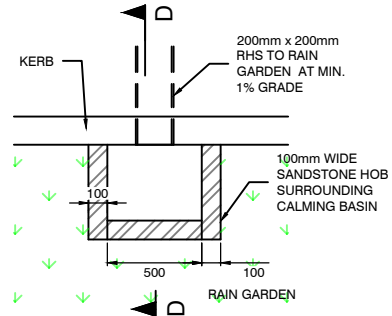
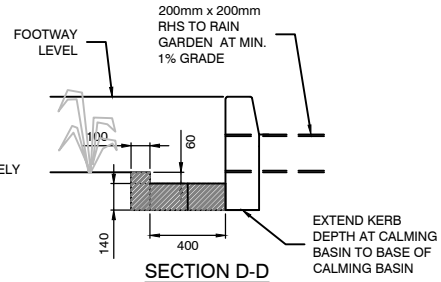


**PLAN**  
1:40

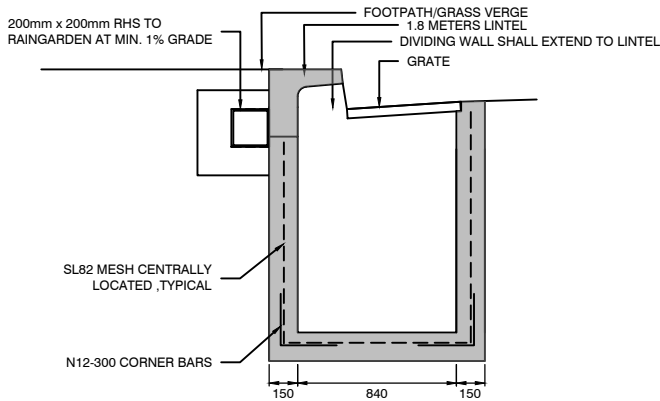


**PLAN**

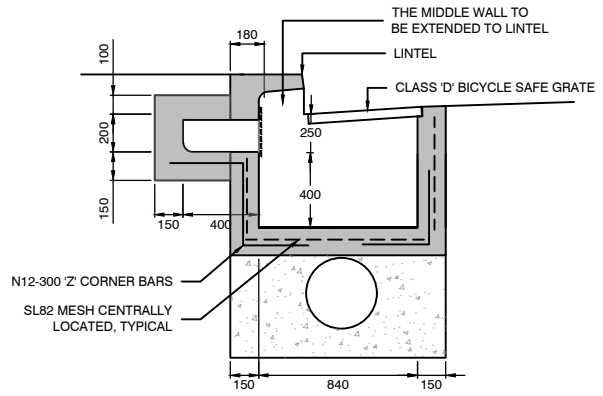


**SECTION D-D**

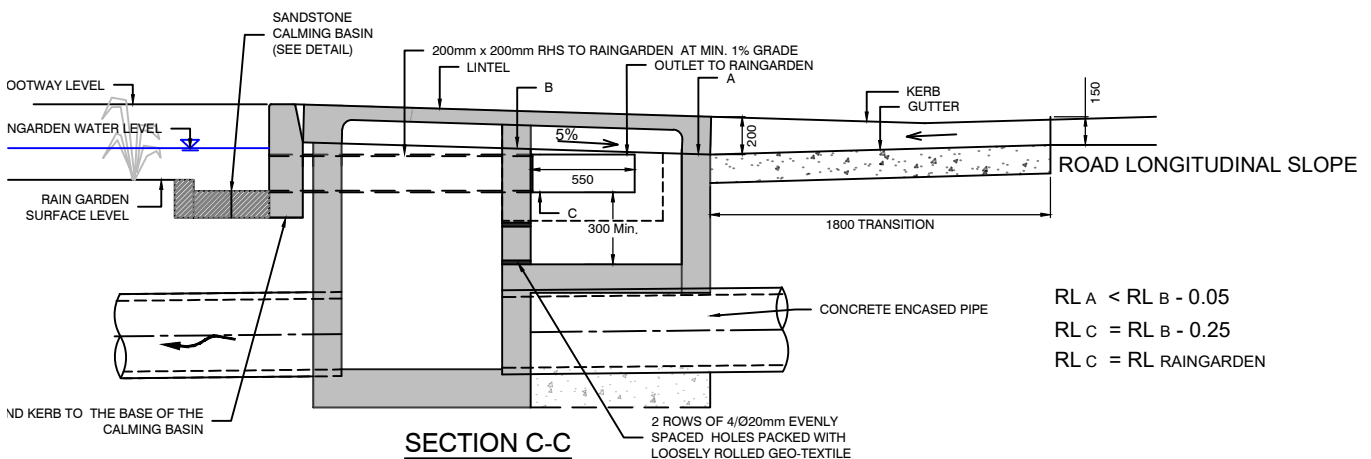
**CALMING BASIN DETAILS**  
1:40



**SECTION A-A**  
1:40



**SECTION B-B**  
1:40



**SECTION C-C**  
1:40

RL A < RL B - 0.05  
RL C = RL B - 0.25  
RL C = RL RAINGARDEN

**NOTES**

1. THIS DRAWING SHALL BE READ IN CONJUNCTION WITH DRAWING #7.2.1
2. THIS OPTION REQUIRES OBVERT OF THE STORMWATER DRAINAGE PIPE TO BE DEEPER THAN 550mm.
3. SIZE OF THE BYPASS SHALL BE ADJUSTED TO SUIT THE CATCHMENT SIZE.
4. LEVELS OF THE SURROUNDING SHLL BE DESIGN TO ALLOW FOR 60mm LOCAL PONDING OVER THE RAINGARDEN INLET CHAMBER.

NOTE: ALL DIMENSIONS IN MILLIMETRES UNLESS OTHERWISE STATED