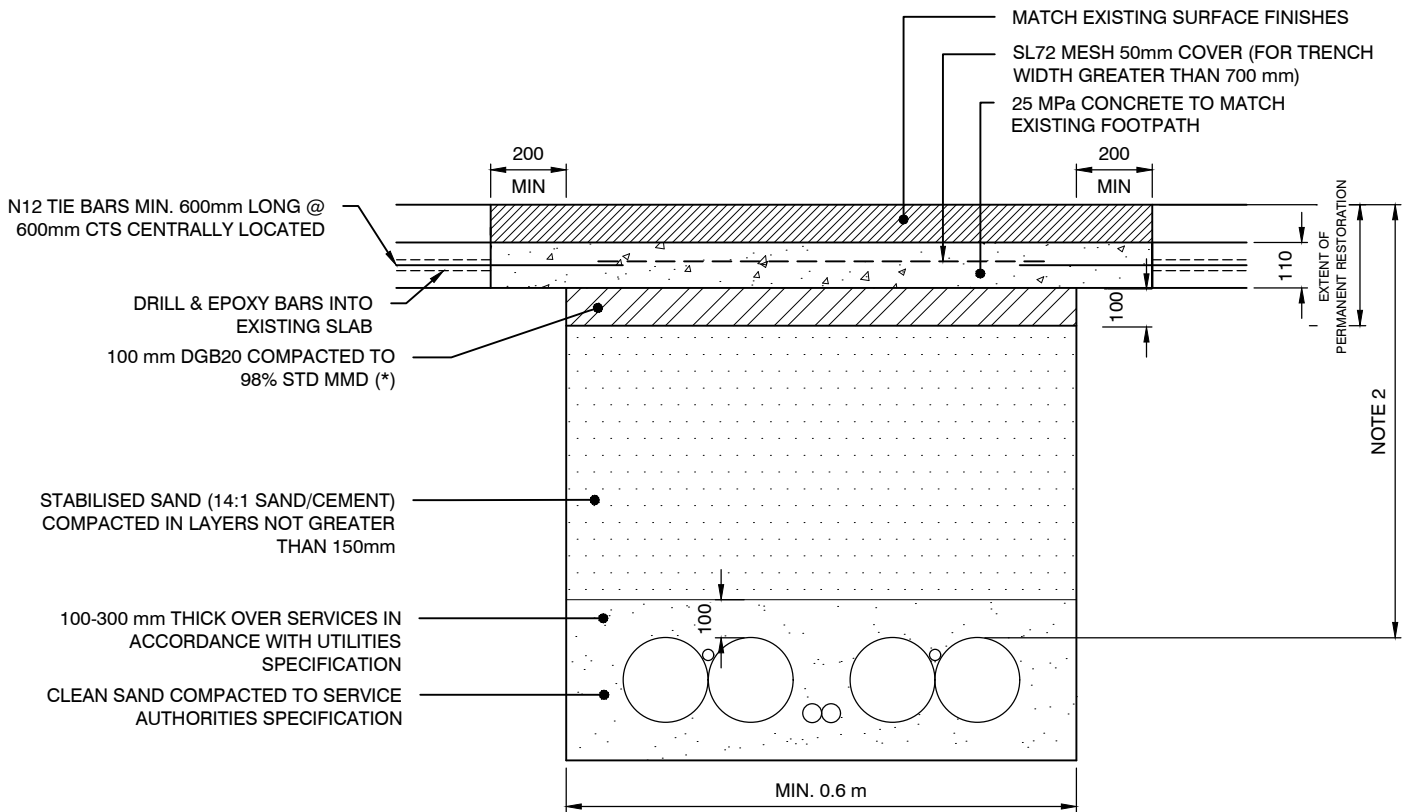
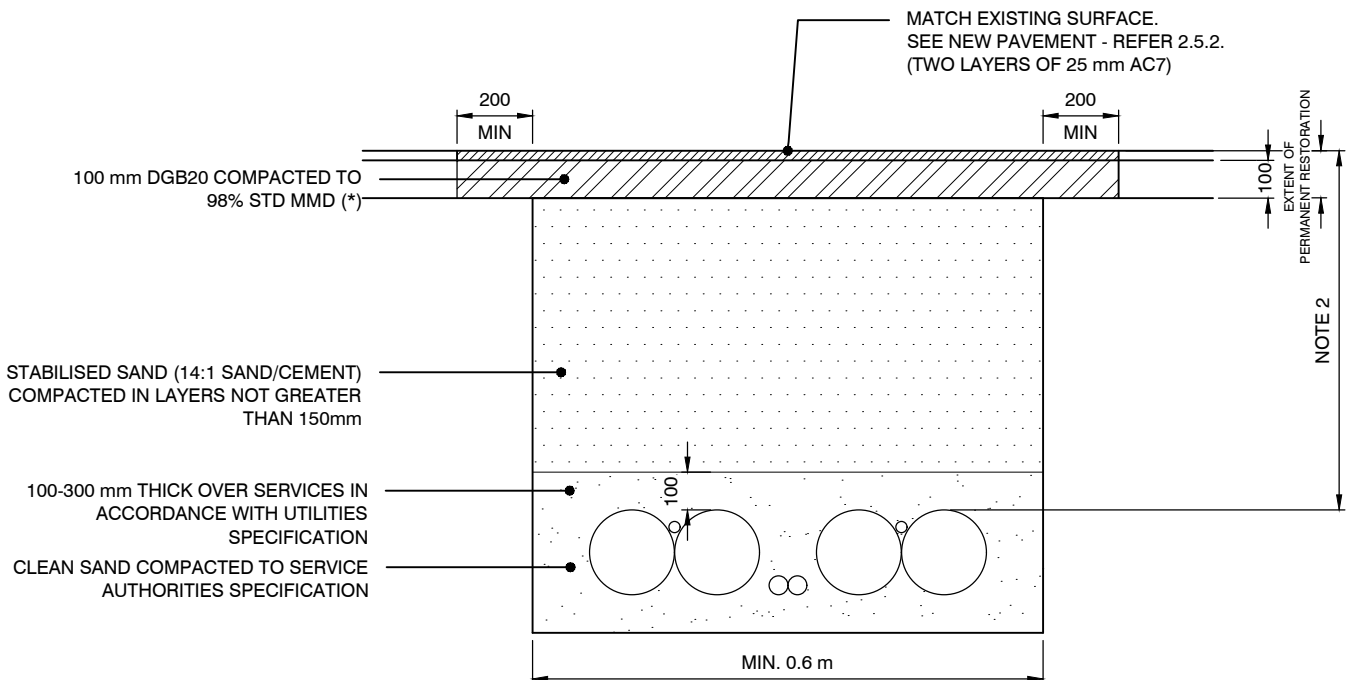


FOOTPATH - PERMANENT RESTORATION FOR CONCRETE FOOTPATH



FOOTPATH - PERMANENT RESTORATION FOR FLEXIBLE ASPHALT FOOTPATH



NOTES:

- *1. AREAS LESS THAN 10 m² - IF THE ROAD BASE IS USED INSTEAD OF CEMENT STABILISED SAND, THE TOP 100 mm OF DGB CAN BE SCARIFIED AND RECOMPACTED IF THE MATERIAL IS FOUND TO COMPLY WITH STANDARD
- 2. FOR NEW SERVICES MINIMUM 1200 mm CLEARANCE FROM INVERT OF GUTTER.

SECTION 1:20

NOTE: ALL DIMENSIONS IN MILLIMETRES UNLESS OTHERWISE STATED

	<p>FOOTPATH PAVEMENT RESTORATION</p> <p>TYPICAL PERMANENT FOOTWAY TRENCH RESTORATION</p>	<p>PAVEMENT RESTORATION</p>	
		<p>Rev D</p>	<p>Dwg No.</p>
		<p>Date 01.12.19</p>	<p>9.1.2</p>
		<p>Approved P S</p>	