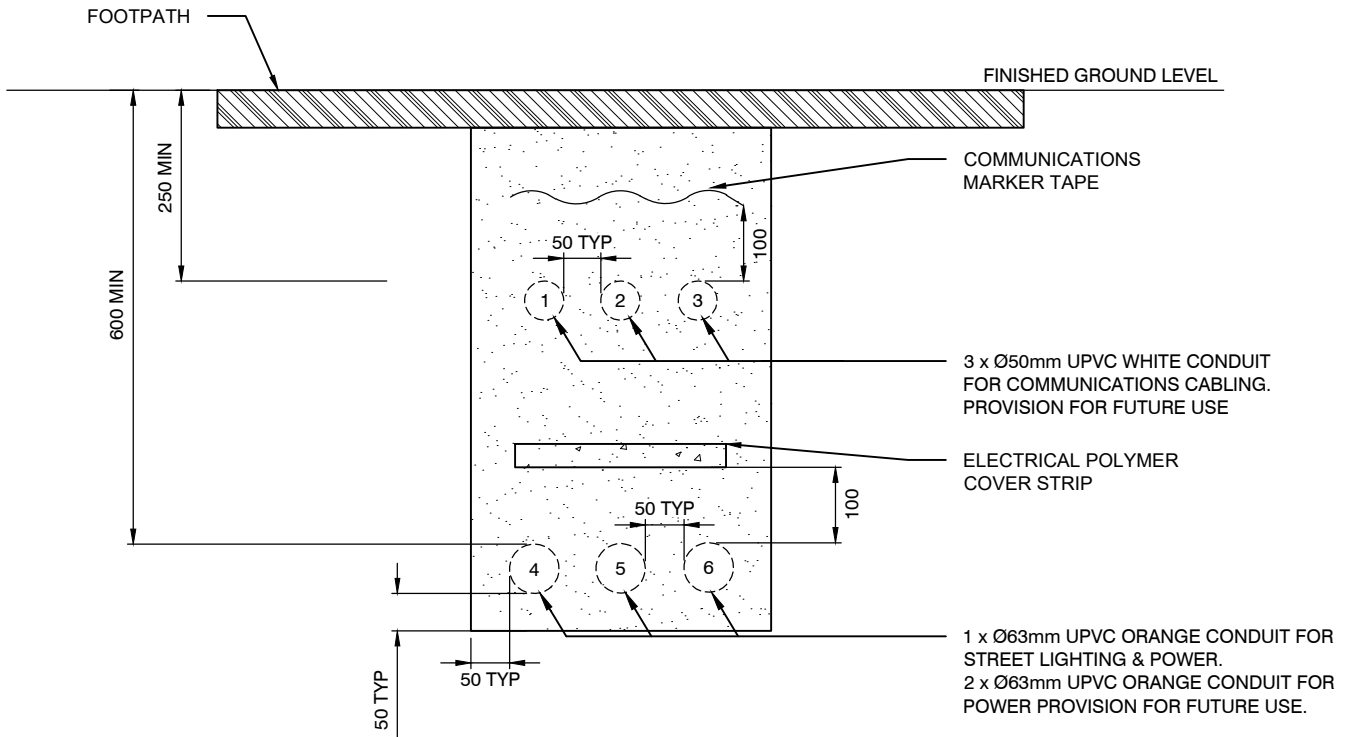
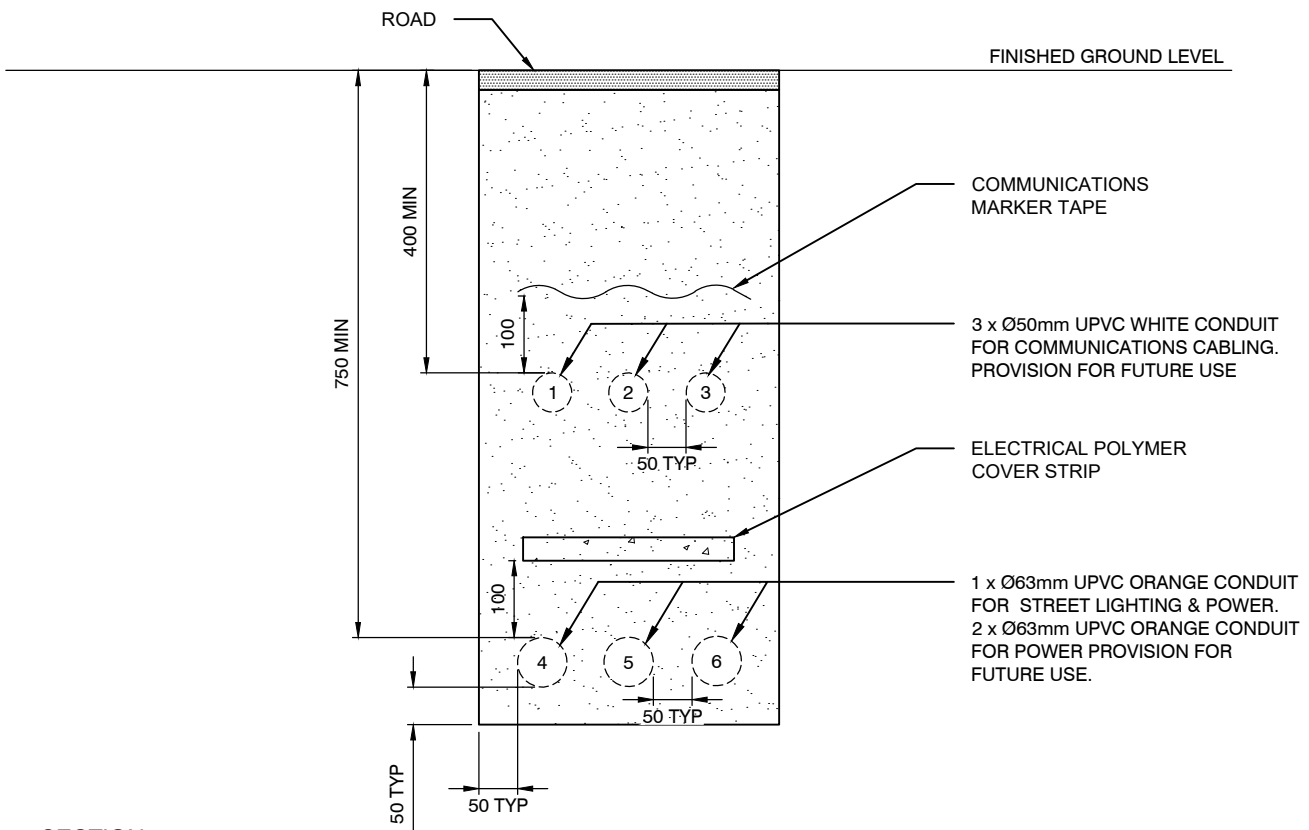


**TYPICAL ELECTRICAL & COMMS  
CONDUIT ARRANGEMENT (FOOTPATH)**

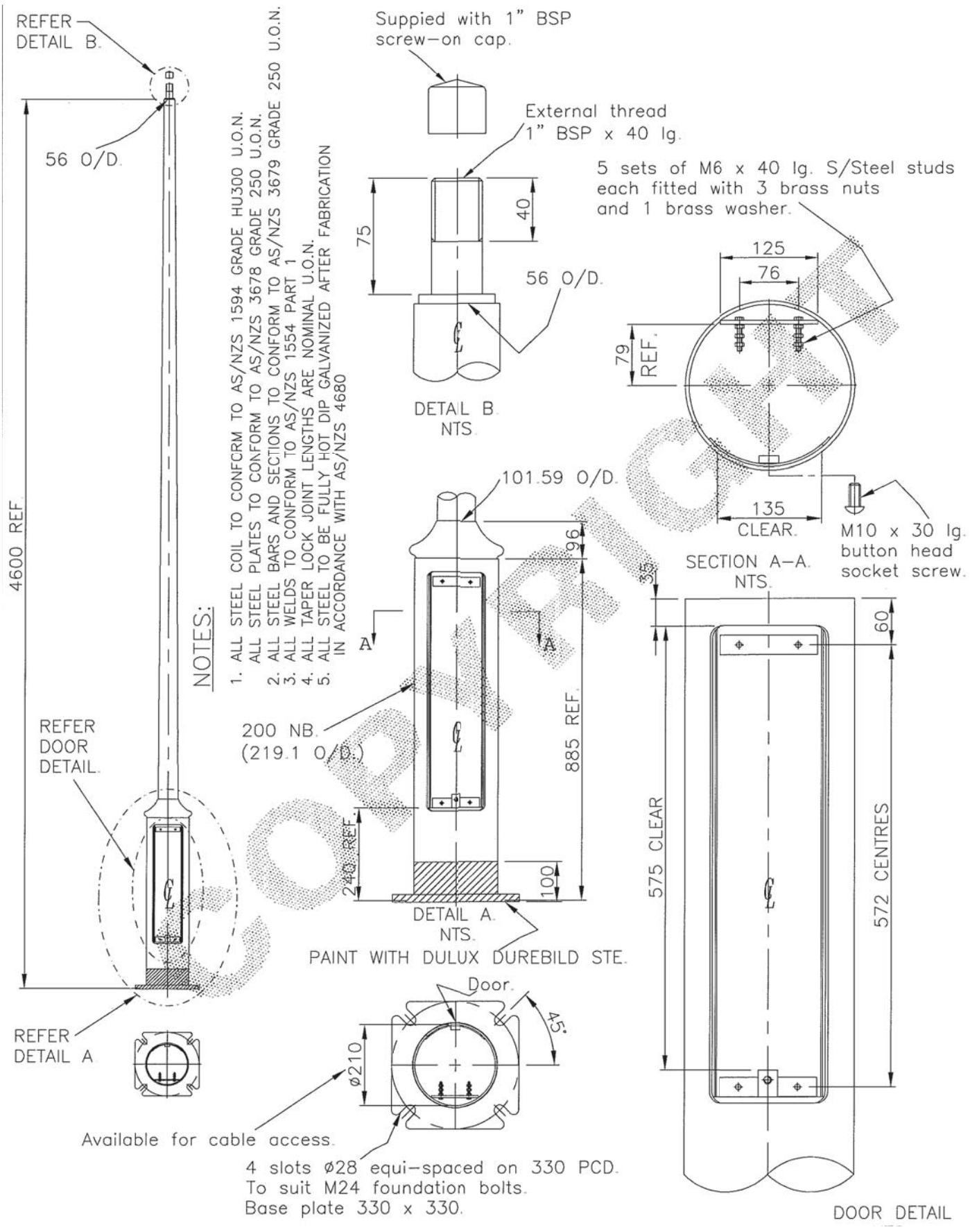


**TYPICAL ELECTRICAL & COMMS  
CONDUIT ARRANGEMENT (ROAD)**



SECTION 1:10

NOTE: ALL DIMENSIONS IN MILLIMETRES UNLESS OTHERWISE STATED



**NOTES:**

1. ALL STEEL COIL TO CONFORM TO AS/NZS 1594 GRADE HU300 U.O.N.
  2. ALL STEEL PLATES TO CONFORM TO AS/NZS 3678 GRADE 250 U.O.N.
  3. ALL STEEL BARS AND SECTIONS TO CONFORM TO AS/NZS 3679 GRADE 250 U.O.N.
  4. ALL WELDS TO CONFORM TO AS/NZS 1554 PART 1
  5. ALL TAPER LOCK JOINT LENGTHS ARE NOMINAL U.O.N.
- IN ACCORDANCE WITH AS/NZS 4680

Supplied with 1" BSP screw-on cap.  
External thread 1" BSP x 40 lg.

5 sets of M6 x 40 lg. S/Steel studs each fitted with 3 brass nuts and 1 brass washer.

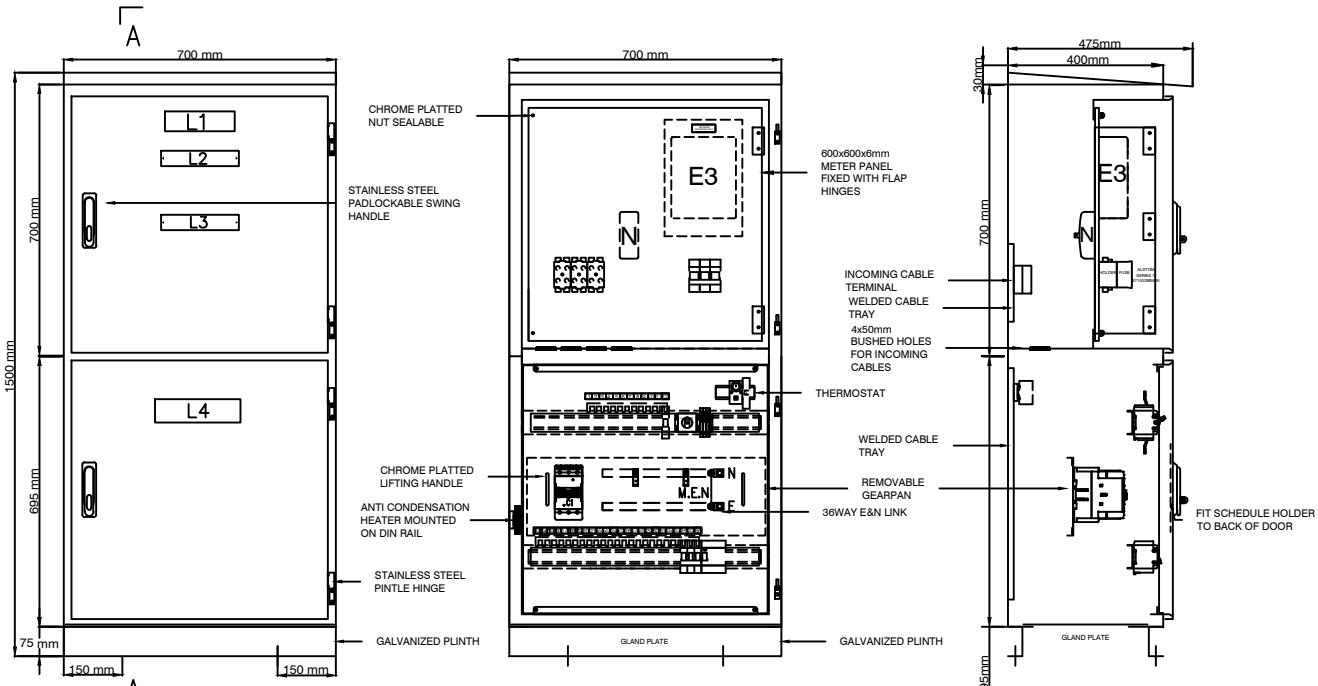
PAINT WITH DULUX DUREBILD STE.

Available for cable access.

4 slots  $\phi 28$  equi-spaced on 330 PCD. To suit M24 foundation bolts. Base plate 330 x 330.

SCALE: NTS

NOTE: ALL DIMENSIONS IN MILLIMETRES UNLESS OTHERWISE STATED

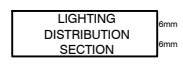
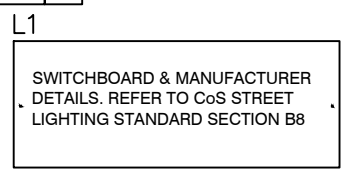
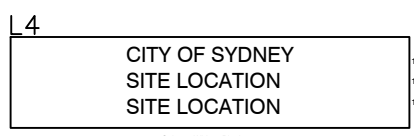
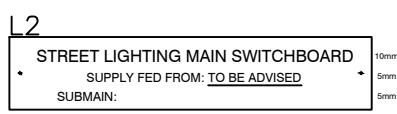


**FRONT ELEVATION  
(WITH DOORS FITTED)**

**FRONT ELEVATION  
(WITH DOORS REMOVED)**

**SECTION A-A**

MINOR EQUIPMENT SCHEDULE				
ITEMS	DESCRIPTION	REFERENCE	PART NO.	QTY
SERVICE FUSES	IPD SERIES 7 SERVICE FUSE BACK CONNECTION + FUSE LINK	#S71002BBWAI+RHLF100		3
THREE PHASE METER	SUPPLIED AND FITTED BY OTHERS			1
SERVICE METER NEUTRAL LINK	NETEC SEALABLE LINKS 3x35 & 2x16mm		#AN100S-535-B	1
MAIN ISOLATOR				1
3P 12-WAY COMB BUSBAR	SCNEIDER 3P 12-WAY 100A COMB BUSBAR WITH ENDCAP		#SN-A9XPH312	1
3P 24-WAY COMB BUSBAR	SCNEIDER 3P 12-WAY 100A COMB BUSBAR WITH ENDCAP		#SN-A9XPH324	1
36 WAY BRASS LINKS	36 WAY N&E BRIBAR LINKS		#DB-BRASSLINK-36	2
ANTI CONDENSATION HEATER	IPD - 15W ANTICONDENSATION HEATER		#RACP-15	1
THERMOSTAT	IPD - 100 - 250V AC 1NC THERMOSTAT		#TRT-10A230V-NC	1
FUSE	FUSE CARRIER		#ACC-FUS-C10G	1
	10A FUSE LINK		#ACC-FUS-10G-10	1
A-O-M SWITCH	TELUX DIN RAIL MOUNTED 20A NON-LOCABLE 2P SWITCH		#M10HEU1-SMA	1
CONTRACTOR (C1)	LS CONTRACTOR 3P N/O AC3-85A 240V		#BX-MC-85A	1
TERMINAL	TERMINAL 2.5MM GREY		#ACC-TERM-GREY-2.5	3
SS316 PADLOCKABLE HANDLE	SWING HANDLE PADLOCKABLE - SS316		#GEN-HANDLE - SH-PL-316	2
MCB	SCHNEIDER - 1P 6A 6kA MCB C - CURVE		#SN-A9F44106	1
MCB	SCHNEIDER - 3P 25A 6kA MCB C - CURVE		#SN-A9F44350	1
MCB	SCHNEIDER - 2P 20A 10kA MCB WITH 30mA RCD PROTECTION C-CURVE			1



**NOTE:**  
 TO BE READ IN CONJUNCTION WITH DRAWING 5.1.4  
 NOTE: ALL DIMENSIONS IN MILLIMETRES UNLESS OTHERWISE STATED

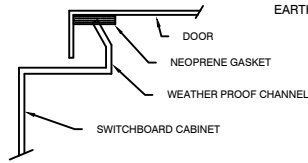
## CONSTRUCTION NOTES:

<b>CONSTRUCTION:</b>	FLOOR MOUNTED, FRONT CONNECTED, RATED AT 100A
<b>CABINET:</b>	2mm 316 STAINLESS STEEL, FOLDED & WELDED/MODULAR BOLTED CONSTRUCTION
<b>DOORS AND ESCUTCHEONS:</b>	1.5mm GRADE 316 STAINLESS STEEL
<b>OTHER BRACKETS:</b>	1.6mm ZINC SEALED MILD STEEL MIN
<b>BOTTOM GLAND PLATE:</b>	6mm METER PANEL
<b>FORM OF SEGREGATION:</b>	FORM 1 - TO AS3439.1 - 2002
<b>DEGREE OF PROTECTION:</b>	IP - 66 - REFER TO WEATHER PROOFING DETAIL
<b>FAULT RATING:</b>	6KA FOR 1 SECOND

<b>FINISH:</b>	
<b>PREPERATION:</b>	DE-SCALE & DE-GREASE
<b>EXTENRAL COLOUR:</b>	NATURAL FINISH
<b>INTERNAL COLOUR:</b>	NATURAL FINISH
<b>REMOVALBLE GEAR PANS &amp; ESCUTCHEON:</b>	GLOSS WHITE
<b>PLINTH:</b>	GALVANISED

<b>LABELS:</b>	ENGRAVED PLASTIC LAMINATE
<b>FIXING:</b>	DOUBLE SIDED ADHESIVE & STAINLESS STEEL SCREWS
<b>COLOUR:</b>	AS SHOWN

<b>CONTROL WIRING:</b>	MINIMUM 1.5mm Cu V90
<b>POWER WIRING:</b>	MINIMUM 2.5mm Cu RE110 DOUBLE INSULATED
<b>WIRE MARKERS:</b>	STANDARD FERRULES
<b>TERMINATIONS:</b>	BARE CABLE ENDS, WHERE TERMINALS REQUIRE LUGS, BOOTLACE FERRULES OR PRE-INSULATED RING LUGS. <b>FORK LUGS SHALL NOT BE USED</b>
<b>COLOUR:</b>	240 AC - PHASE COLOURED NEUTRAL - BLACK EARTH - GREEN/YELLOW

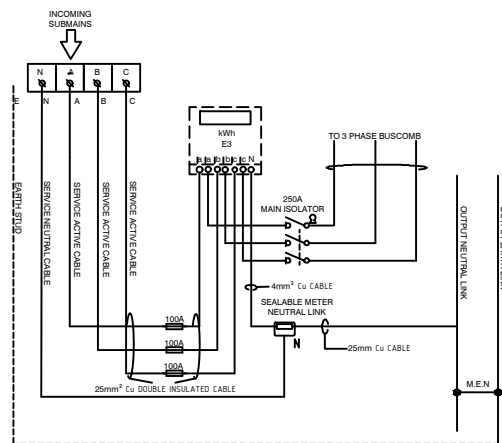


**WEATHER PROOFING DETAIL**

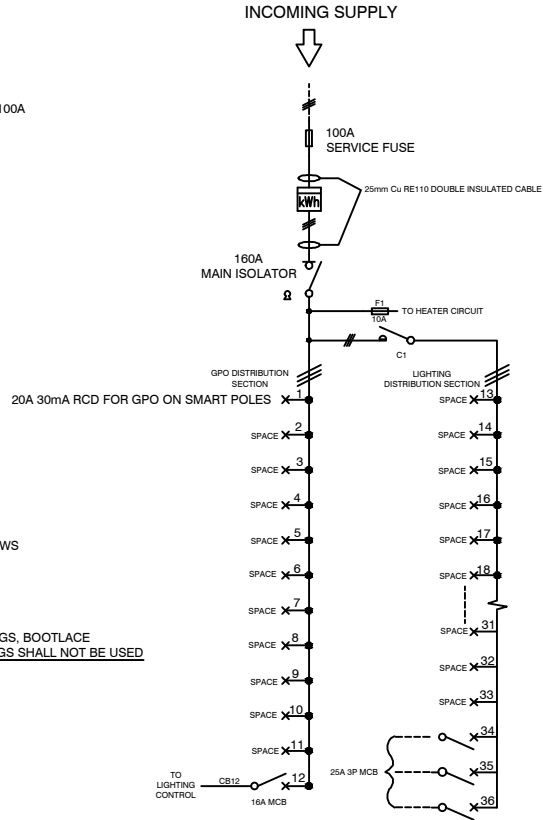
1 OFF

## NOTES:

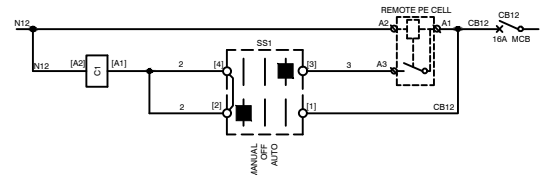
MAIN ISOLATOR TO BE LOCATED IN THE ENERGY AUTHORITY SECTION. BUS COMB TO BE FIXED SECURELY TO THE BUSBAR.



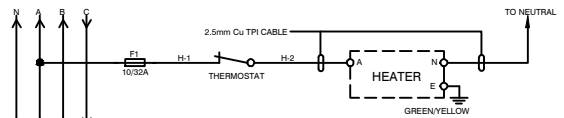
**E3 METER WIRING SCHEMATIC**



**SINGLE LINE DIAGRAM**



**PE CELL LIGHTING CONTROL SCHEMATIC DIAGRAM**

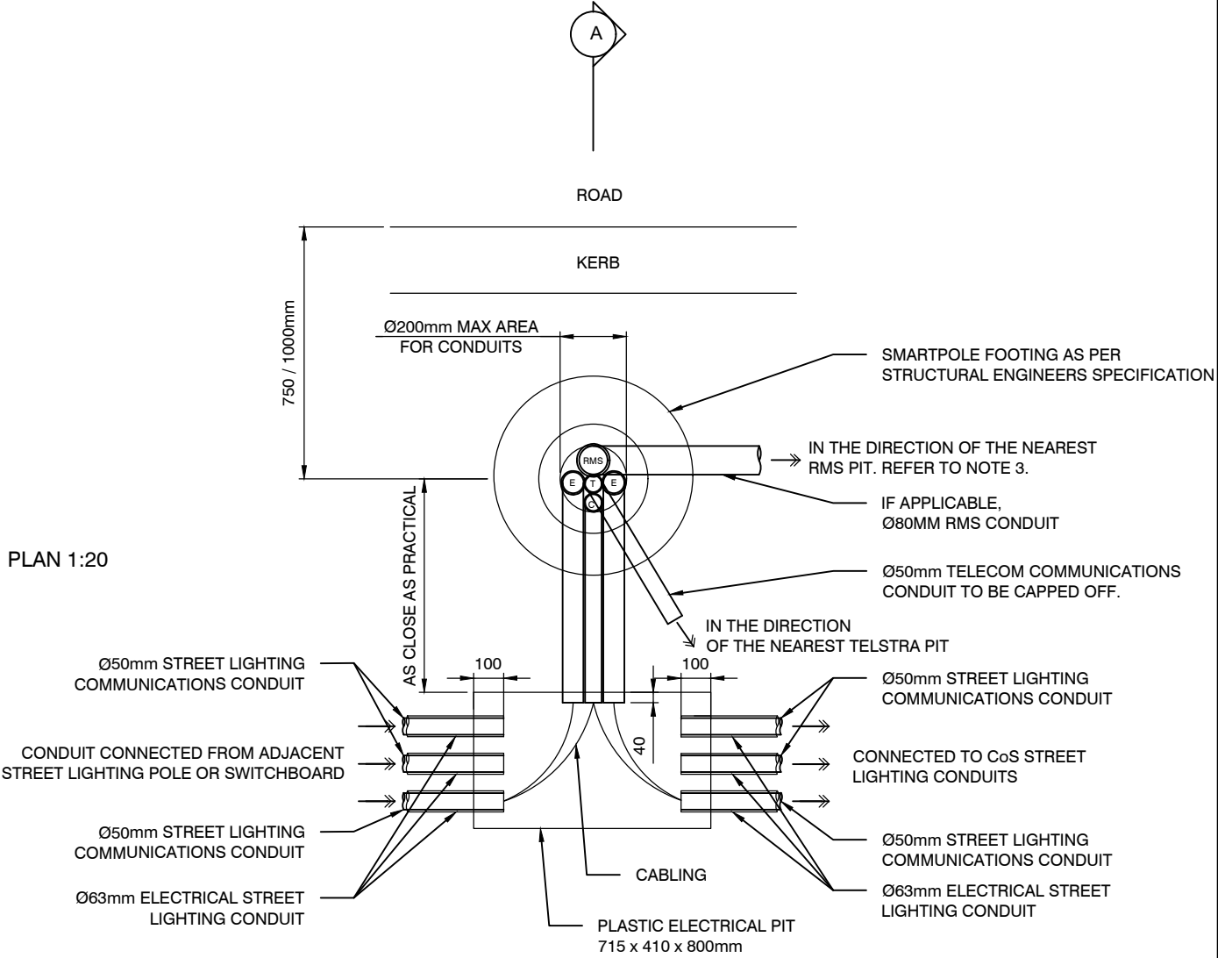


**ANTICONDENSATION HEATER SCHEMATIC DIAGRAM**

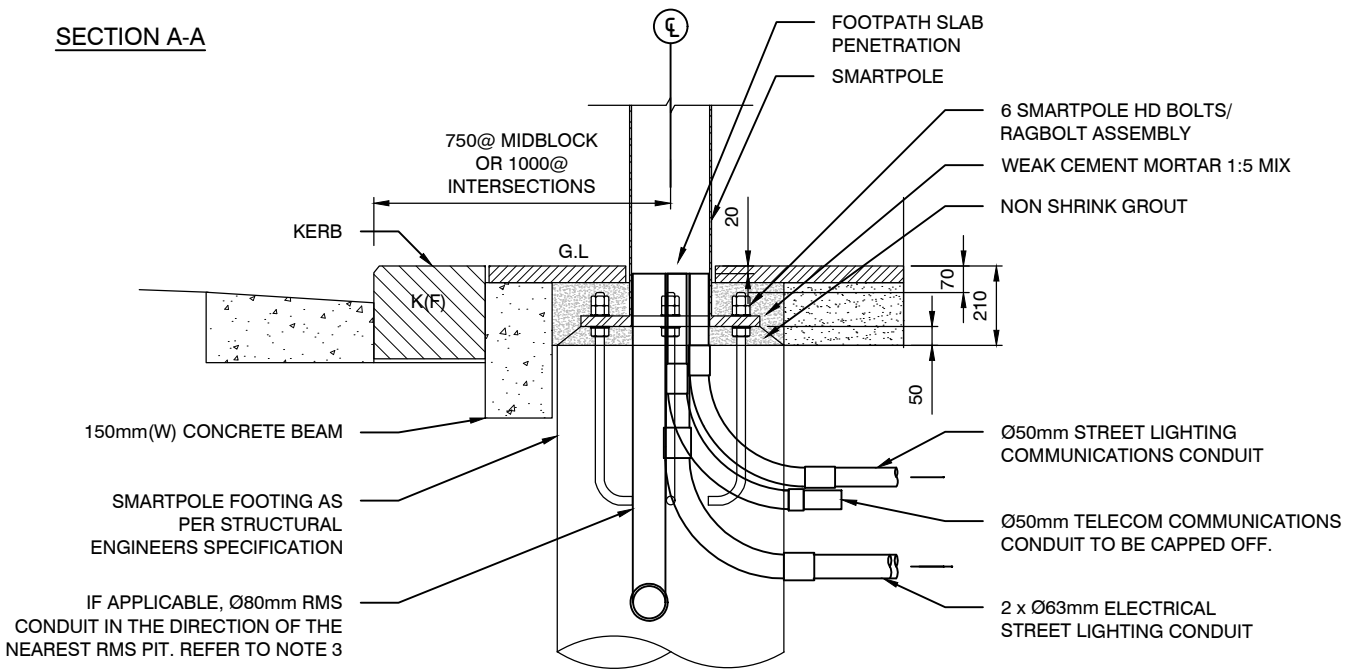
## NOTE:

TO BE READ IN CONJUNCTION WITH DRAWING 5.1.3  
NOTE: ALL DIMENSIONS IN MILLIMETRES UNLESS OTHERWISE STATED

**CONDUIT ARRANGEMENTS AT POLE BASE**

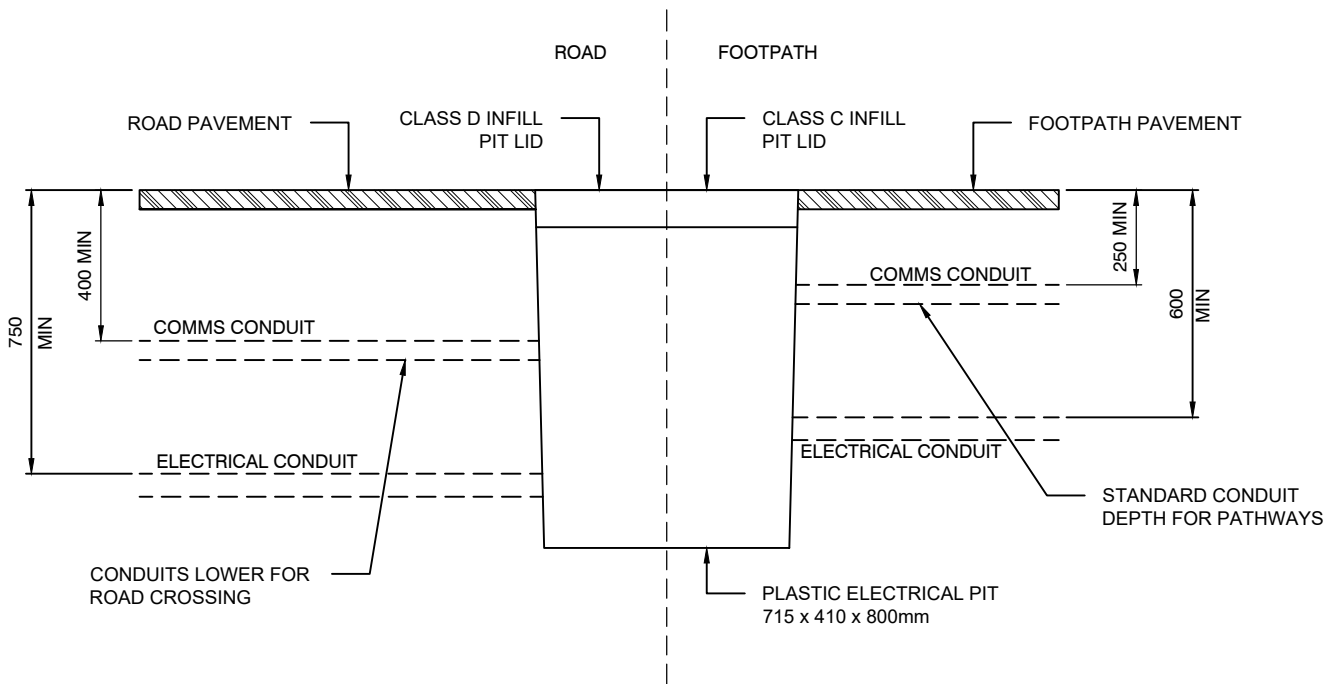


**SECTION A-A**



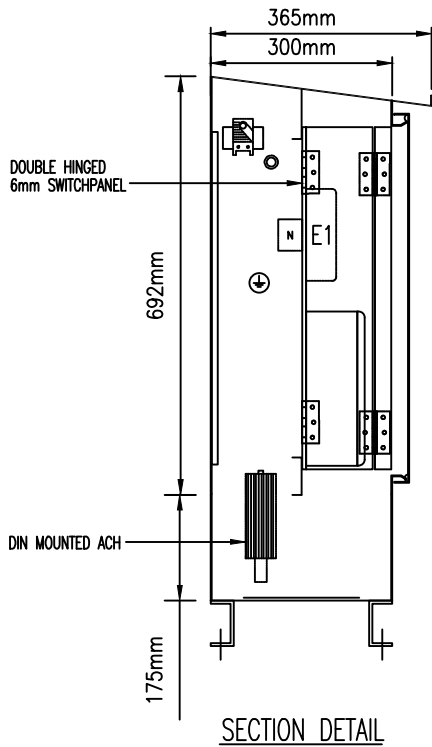
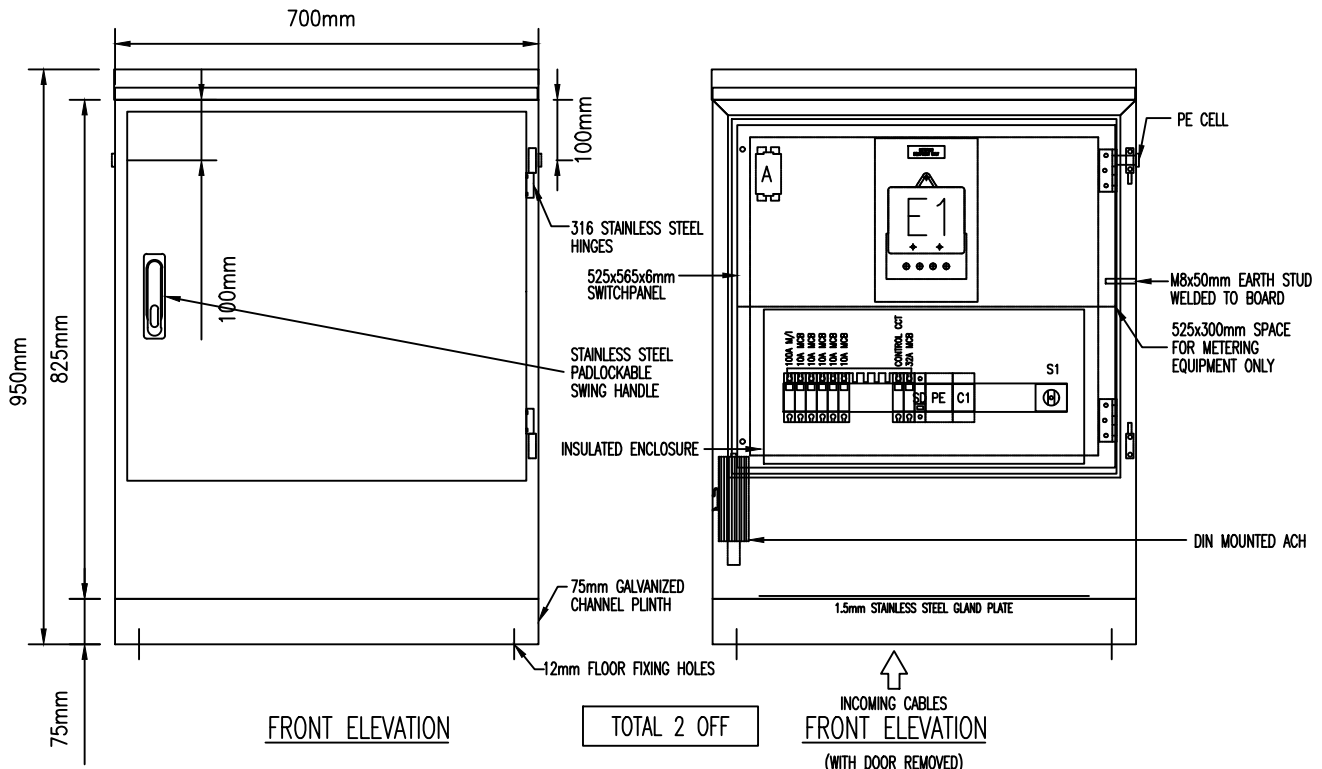
**SECTION 1:20**

NOTE: ALL DIMENSIONS IN MILLIMETRES UNLESS OTHERWISE STATED



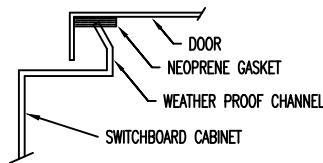
SCALE 1:20

NOTE: ALL DIMENSIONS IN MILLIMETRES UNLESS OTHERWISE STATED



**CONSTRUCTION NOTES:**

- |                                   |   |
|-----------------------------------|---|
| <b>CABINET:</b>                   | 1.5mm STAINLESS STEEL 316 GRADE   |
| <b>DOOR:</b>                      | 1.5mm STAINLESS STEEL 316 GRADE   |
| <b>PLINTH:</b>                    | 75mm x 38mm MILD STEEL CHANNEL  |
| <b>ESCUTCHEON &amp; GEAR PAN:</b> | 1.5mm STAINLESS STEEL 316 GRADE   |
| <b>GLAND PLATES:</b>              | 1.5mm STAINLESS STEEL 316 GRADE   |
| <b>FORM OF SEGREGATION:</b>       | FORM 1  |
| <b>DEGREE OF PROTECTION:</b>      | IP-66 - REFER TO WEATHER PROOFING DETAIL  |
| <b>FAULT RATING:</b>              | 6kA   |
| <b>FINISH:</b>                    |   |
| <b>PREPARATION:</b>               | DE-SCALE & DE-GREASE  |
| <b>EXTERNAL COLOUR:</b>           | GRAIN FINISH  |
| <b>INTERNAL COLOUR:</b>           | GRAIN FINISH  |
| <b>BRACKETS:</b>                  | GLOSS WHITE   |
| <b>PLINTH:</b>                    | HOT DIP GALVANISED  |
| <b>LABELS:</b>                    | ENGRAVED PLASTIC LAMINATE   |
| <b>FIXING:</b>                    | DOUBLE SIDED ADHESIVE & SCREW FIXED   |
| <b>COLOUR:</b>                    | MAIN ISOLATOR - WHITE LETTERS ON BLACK<br>WARNING, FIRE & LIFTS - WHITE LETTERS ON RED<br>OTHERS - BLACK LETTERS ON WHITE |
| <b>CONTROL WIRING:</b>            | MINIMUM 1.5mm Cu V90  |
| <b>WIRE MARKERS:</b>              | SMB HARVAL STANDARD FERRULES  |
| <b>TERMINATIONS:</b>              | BARE CABLE ENDS, WHERE TERMINALS REQUIRE LUGS, BOOTLACE FERRULES<br>OR PRE-INSULATED RING LUGS.                           |
| <b>COLOUR:</b>                    | 240V AC - PHASE COLOURED<br>NEUTRAL - BLACK<br>EARTH - GREEN/YELLOW<br>AC CONTROL CIRCUIT ACTIVE- RED                     |

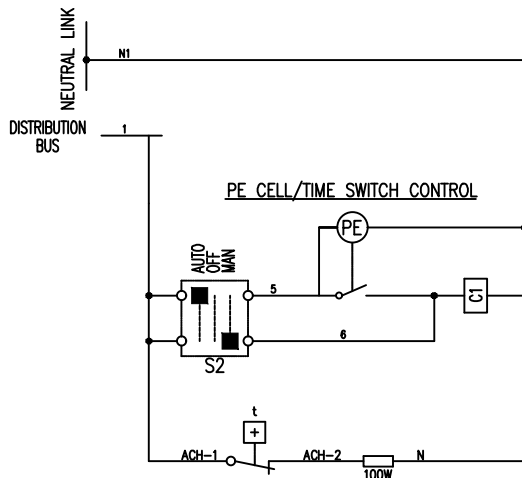


**WEATHER PROOFING DETAIL**

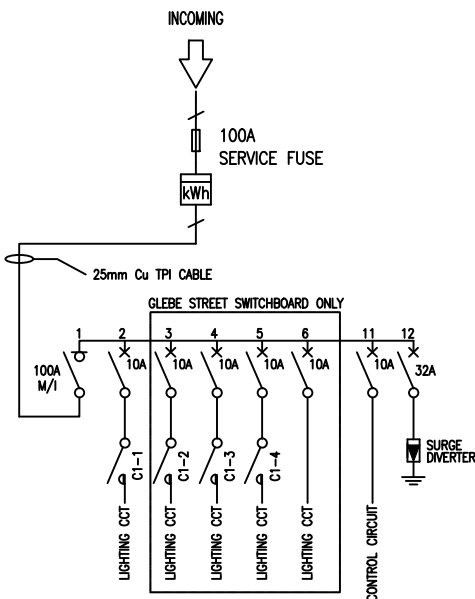
**NOTE:**

TO BE READ IN CONJUNCTION WITH DRAWING 5.1.8  
NOTE: ALL DIMENSIONS IN MILLIMETRES UNLESS OTHERWISE STATED

EQUIPMENT SCHEDULE				
ITEMS	ITEMS INFORMATION		QTY	TOTAL
	DESCRIPTION	PART NUMBER		
SERVICE FUSE	IPD SERIES 7 SERVICE FUSE	ACC-FUS-C1002BBWA	1	2
	FITTED WITH FUSE LINK	ACC-FUS-LRHLF-100	1	2
SINGLE PHASE METER	SUPPLIED AND FITTED BY OTHERS		1	2
SEALABLE NEUTRAL LINK	NETEC SEALABLE LINK 100A	AN100S-535-B	1	2
DOOR SWING HANDLE	STAINLESS STEEL PADLOCKABLE SWING HANDLE	GEN-HANDLE-SH-PL-316	1	2
INSULATED ENCLOSURE	CLIPSAL 24 MODULE SURFACE MOUNTING INSULATED ENCLOSURE	SN-4CF24FD	1	2
1P 12-WAY COMB BUSBAR	SCHNEIDER 1P 12-WAY 80A COMB BUSBAR	SN-BUSCOMB12P	1	2
1P 100A ISOLATOR	SCHNEIDER 1P 100A ISOLATOR	SN-A9S86191	1	2
1P 32A MCB	SCHNEIDER 1P 32A MCB 6KA C-CURVE	SN-A9F44132	1	2
1P 10A MCB	SCHNEIDER 1P 10A MCB 6KA C-CURVE (GLEBE ST SW =7 & JONES ST SW=2)	SN-A9F44110	-	9
LIGHT SENSITIVE SWITCH	SCHNEIDER IC200 LIGHT SENSITIVE SWITCH COMPLETE WITH PRE-WIRED PE CELL	SN-152B4	1	2
4P CONTACTOR [C1]	SCHNEIDER 4P 25A N/O CONTACTOR 240V AC COIL	SN-A9C20834	1	2
SELECTOR SWITCH [S1]	TELUX SURFACE MOUNT CHANGEDOVER SWITCH ENGRAVED AUTO-OFF-MAN	BA-M10H5MAU1	1	2
SURGE DIVERTER	LDU GKSDL SINGLE PHASE SINGLE MODE 50KA SURGE DIVERTER	LD-GKSDL1-50-275	1	2
ANTI-CONDENSATION HEATERS	IPD- 240VAC 100W HEATER	IP-RACM-100	1	2
THERMOSTAT	IPD - THERMOSTAT 1 N/C 10A 230VAC	IP-TRT-10A230-NC	1	2



LIGHTING CONTROL CIRCUIT SCHEMATIC DIAGRAM



SINGLE LINE DIAGRAM

CITY OF SYDNEY MAIN SWITCHBOARD  
 LOCATION: #  
 SUPPLY FED FROM : TO BE ADVISED  
 SUBMAIN : 2-1Cx25mm Cu XLPE  
 ASSET ID: TBA

Colour - White-Black  
 Size - 200x40mm  
 1 OFF

# ----- STREET OR ----- STREET

Manufactured by: MANUFACTURERE COMPANY NAME

Telephone: ----- e-mail: -----  
 Drawing Reference: ----- Date of Manufacture: -----

Proudly Engineered & Manufactured in Australia

Colour : Blue-White-Blue  
 Size : 180x50mm

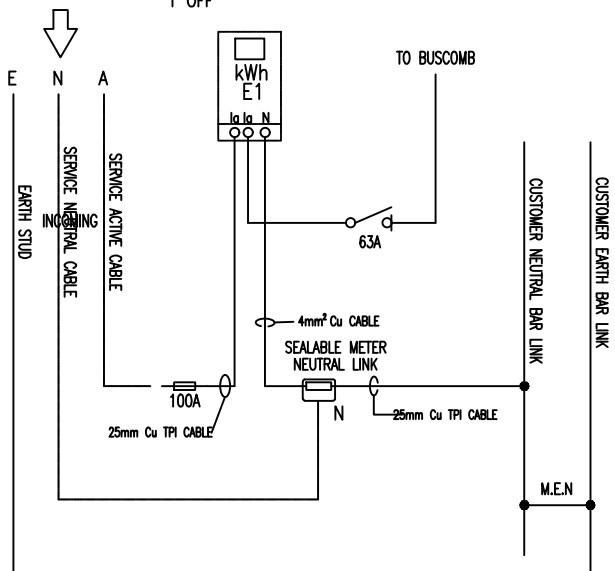
ELECTRICITY METER  
 LOCATED BEHIND

Colour : White-Black  
 Size : 120x30mm  
 1 OFF

1 OFF

S1 C1

Colour : White-Black  
 Size : 18x18mm  
 6mm TEXT  
 1 OFF EACH



E1 METER WIRING SCHEMATIC

NOTE:

TO BE READ IN CONJUNCTION WITH DRAWING 5.1.7

NOTE: ALL DIMENSIONS IN MILLIMETRES UNLESS OTHERWISE STATED