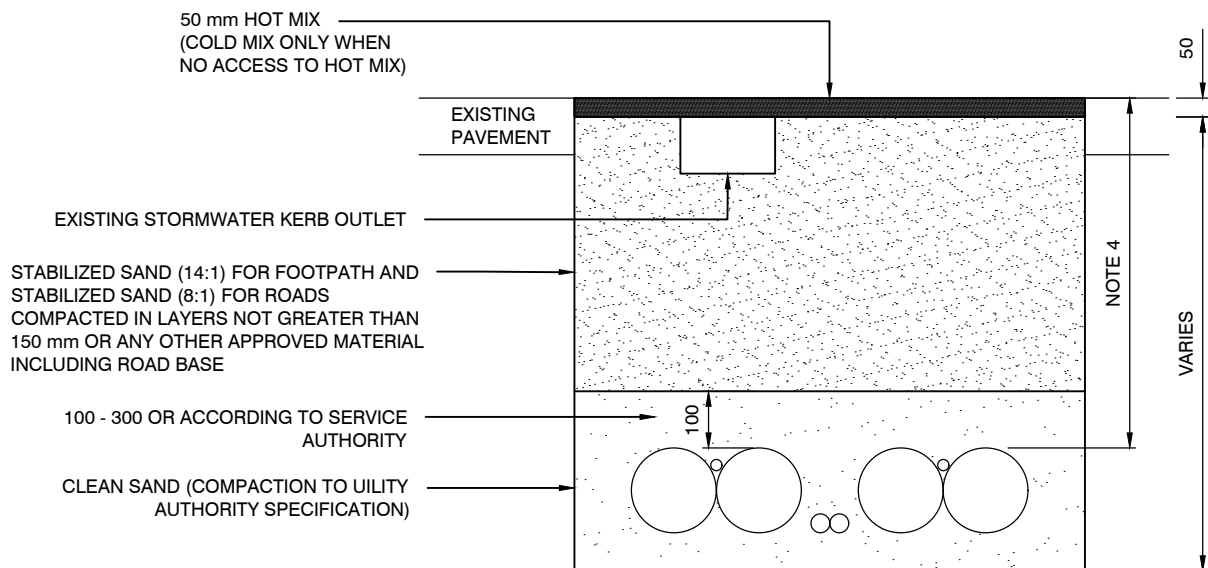


TEMPORARY RESTORATION FOR ALL ROAD AND FOOTPATH

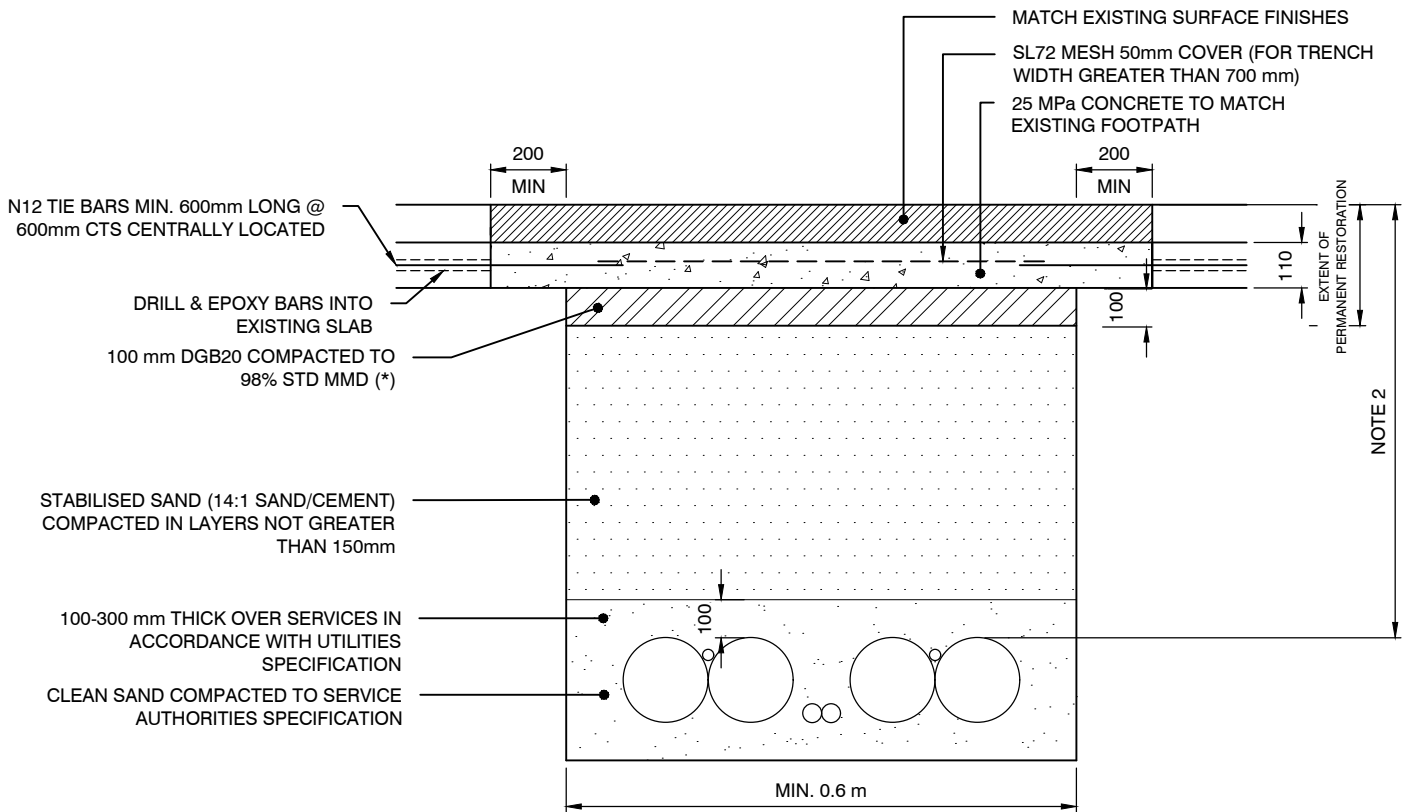


NOTES:

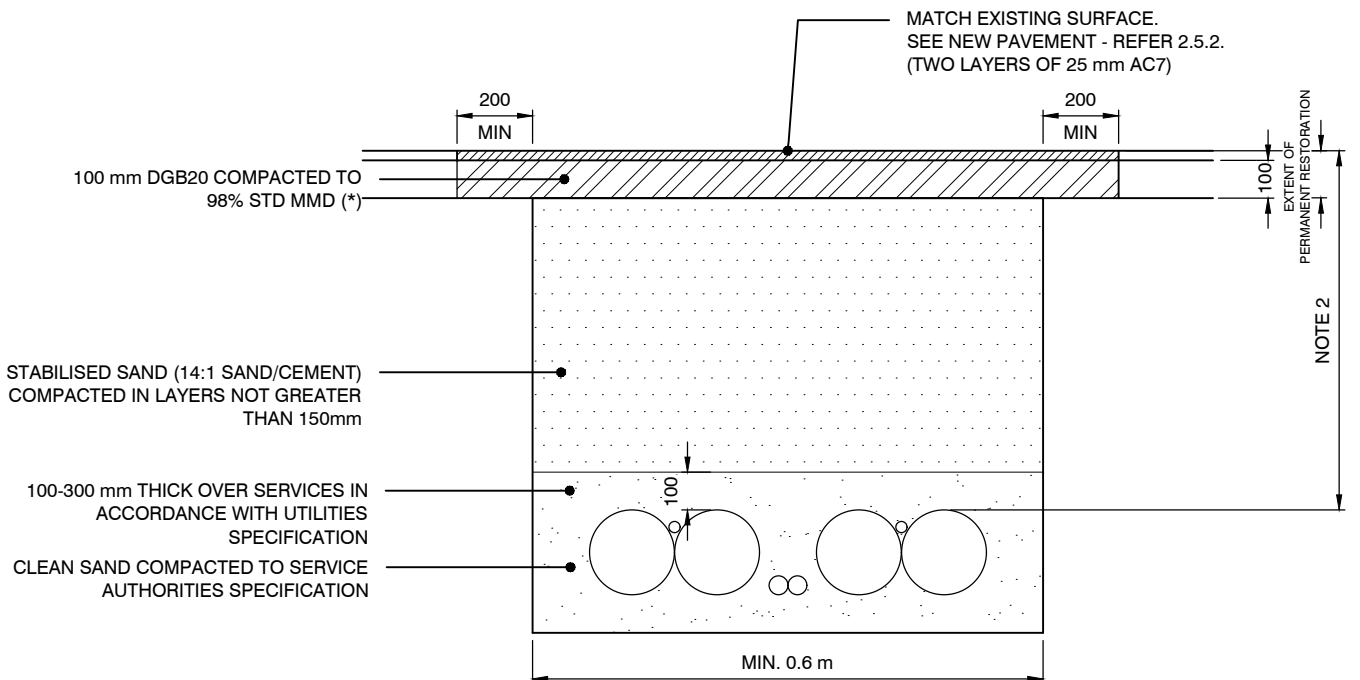
1. MINIMUM RESTORATION WIDTH 0.6 m FOR ASPHALT ROAD AND 1.0 m FOR CONCRETE ROAD
2. MINIMUM RESTORATION WIDTH 0.6 m FOR ASPHALT FOOTPATH AND 0.6 m FOR CONCRETE FOOTPATH
3. REFER TO ANNEXURE A OF SECTION B12 ROAD OPENINGS AND RESTORATION FOR MORE DETAILS.
4. FOR NEW SERVICES MINIMUM 1200 mm CLEARANCE FROM INVERT OF GUTTER.

NOTE: ALL DIMENSIONS IN MILLIMETRES UNLESS OTHERWISE STATED

FOOTPATH - PERMANENT RESTORATION FOR CONCRETE FOOTPATH



FOOTPATH - PERMANENT RESTORATION FOR FLEXIBLE ASPHALT FOOTPATH



NOTES:

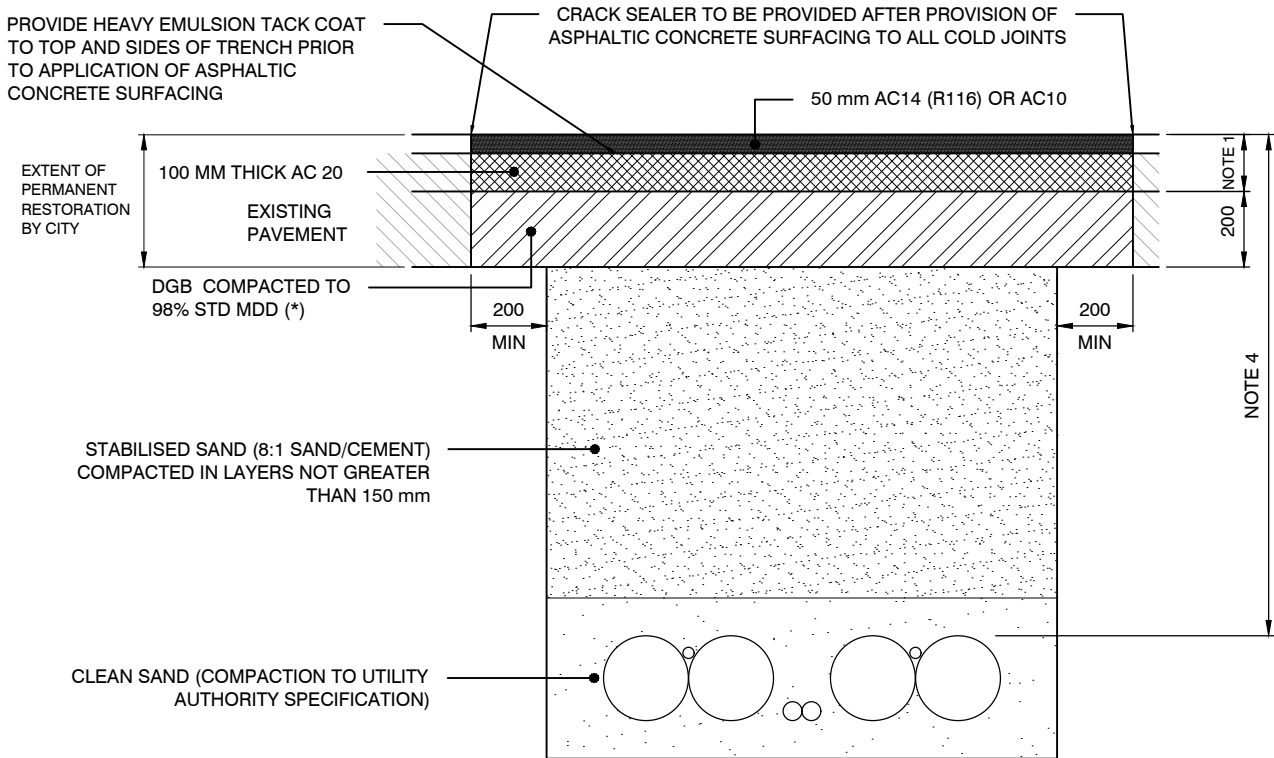
- *1. AREAS LESS THAN 10 m² - IF THE ROAD BASE IS USED INSTEAD OF CEMENT STABILISED SAND, THE TOP 100 mm OF DGB CAN BE SCARIFIED AND RECOMPACTED IF THE MATERIAL IS FOUND TO COMPLY WITH STANDARD
- 2. FOR NEW SERVICES MINIMUM 1200 mm CLEARANCE FROM INVERT OF GUTTER.

SECTION 1:20

NOTE: ALL DIMENSIONS IN MILLIMETRES UNLESS OTHERWISE STATED

	FOOTPATH PAVEMENT RESTORATION		PAVEMENT RESTORATION	
	TYPICAL PERMANENT FOOTWAY TRENCH RESTORATION		Rev D	Dwg No.
			Date 01.12.19	9.1.2
			Approved P S	

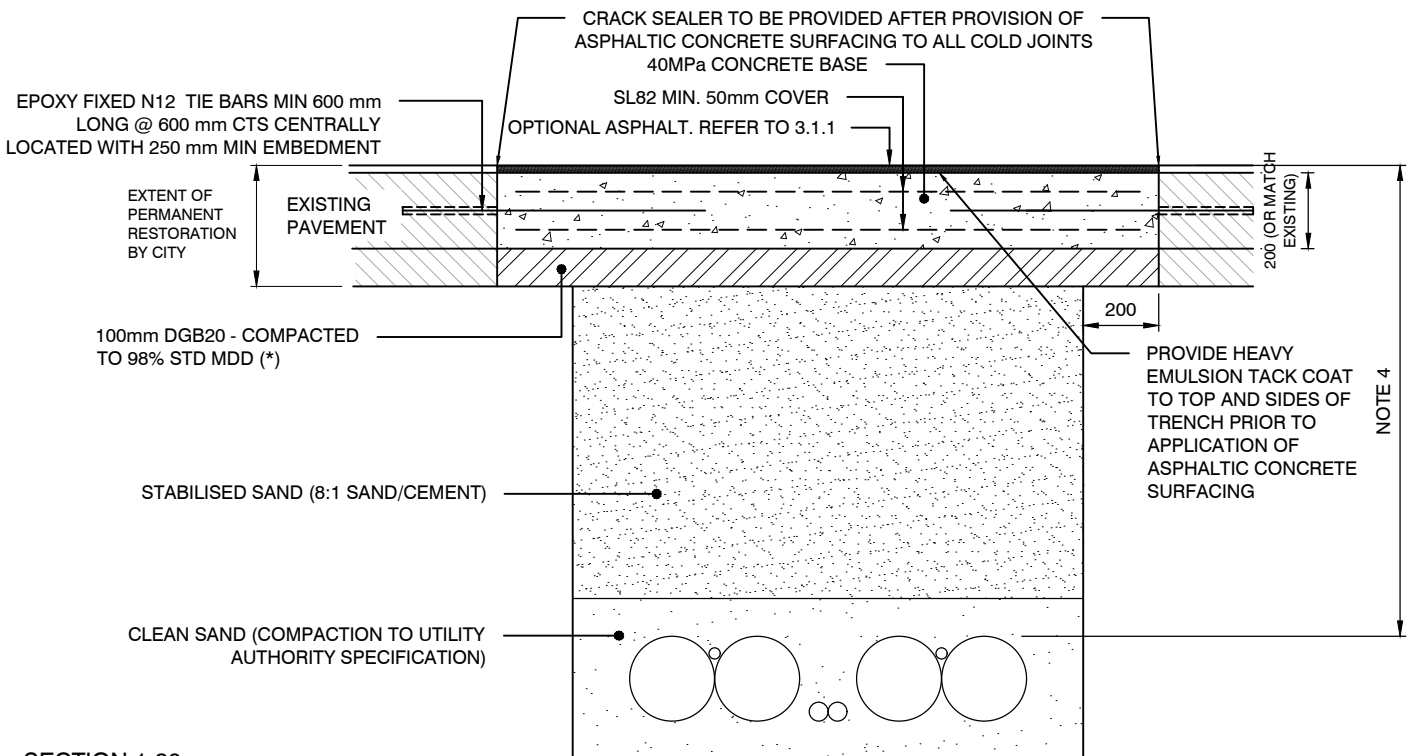
ROAD PAVEMENT - PERMANENT RESTORATION FOR ASPHALT ROAD



NOTES:

- FOR AREAS LESS THAN 10 m², USE AC14 150 mm IN TWO LAYERS.

ROAD PAVEMENT - PERMANENT RESTORATION FOR CONCRETE ROAD

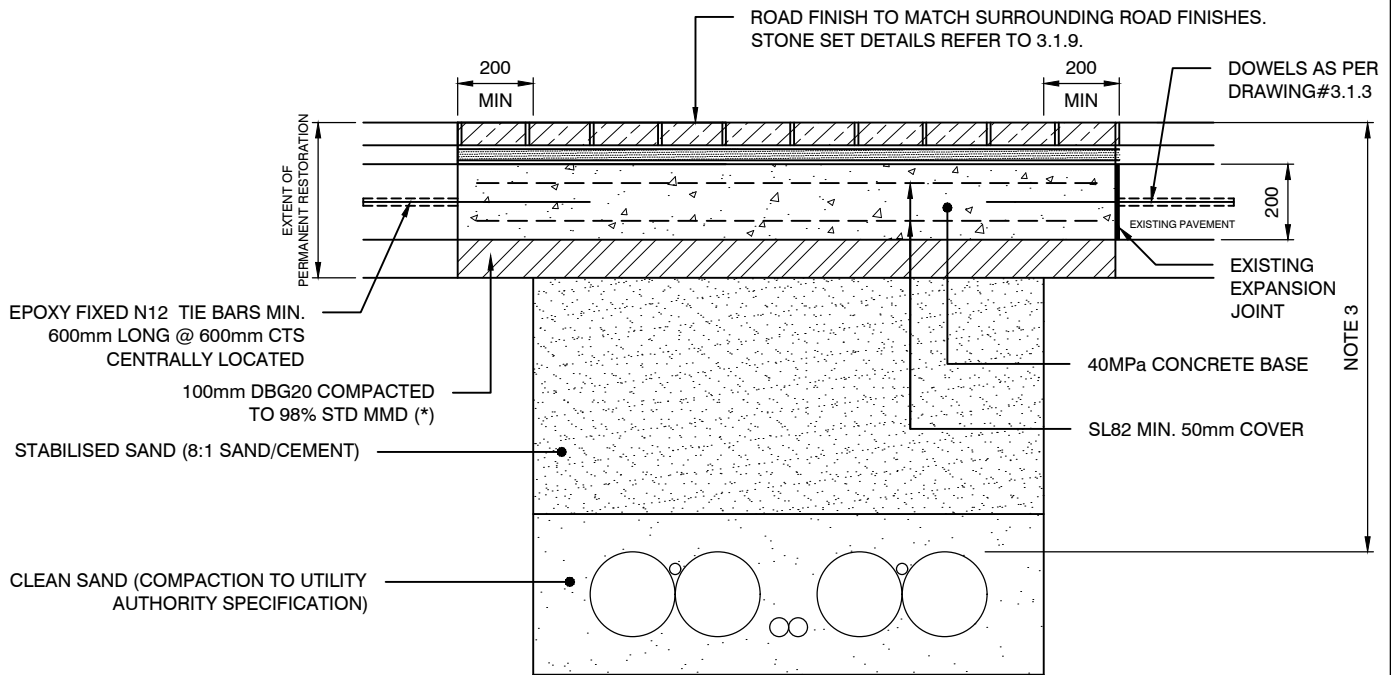


SECTION 1:20

NOTES

- AREA LESS THAN 10 m² - IF ROAD BASE IS USED INSTEAD OF CEMENT STABILISED SAND AND THE MATERIAL IS FOUND TO COMPLY WITH STANDARD
 - FOR CONCRETE ROADS - THE TOP 100 mm OF DGB CAN BE SCARIFIED AND RECOMPACTED
 - FOR ASPHALT ROAD - THE TOP 200 mm CAN BE SCARIFIED AND RECOMPACTED IN TWO LAYERS
- RESTORATION WORKS TO MATCH EXISTING LEVELS OR MINIMUM DIMENSIONS SPECIFIED.
- ALL DIMENSIONS IN MILLIMETERS UNLESS OTHERWISE STATED
- FOR NEW SERVICES MINIMUM 1200 mm CLEARANCE FROM INVERT OF GUTTER.

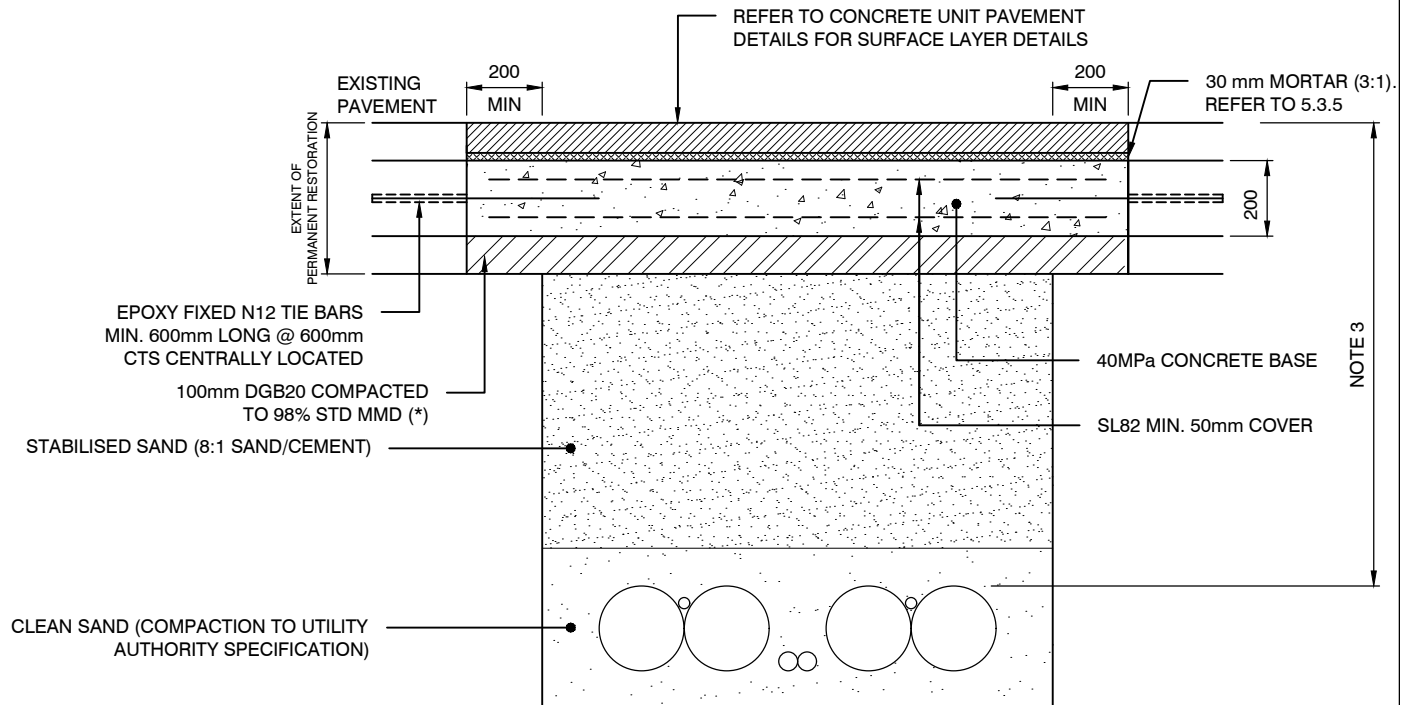
STONE SET ROAD PAVEMENT



NOTES:

1. WHERE RESTORATION ZONE INCLUDES EXISTING EXPANSION JOINTS, THE EXPANSION JOINTS SHALL BE RESTORED TO AS PER NEW DOWEL'S CONSTRUCTION DETAILS
2. REFER TO DWG 3.1.3 FOR EXPANSION JOINT DETAIL
3. FOR NEW SERVICES MINIMUM 1200 mm CLEARANCE FROM INVERT OF GUTTER.

CONCRETE UNIT ROAD PAVEMENT



SECTION 1:20

NOTES:

- *1. AREAS LESS THAN 10 m² - IF THE ROAD BASE IS USED INSTEAD OF CEMENT STABILISED SAND, THE TOP 100 mm OF DGB CAN BE SCARIFIED AND RECOMPACTED IF THE MATERIAL IS FOUND TO COMPLY WITH STANDARD
2. ALL DIMENSIONS IN MILLIMETRES UNLESS OTHERWISE STATED
3. FOR NEW SERVICES MINIMUM 1200 mm CLEARANCE FROM INVERT OF GUTTER.