

FIGURE 16  
**WOOLLOOMOOLOO  
 HAZARD CATEGORIES  
 0.2% AEP EVENT**

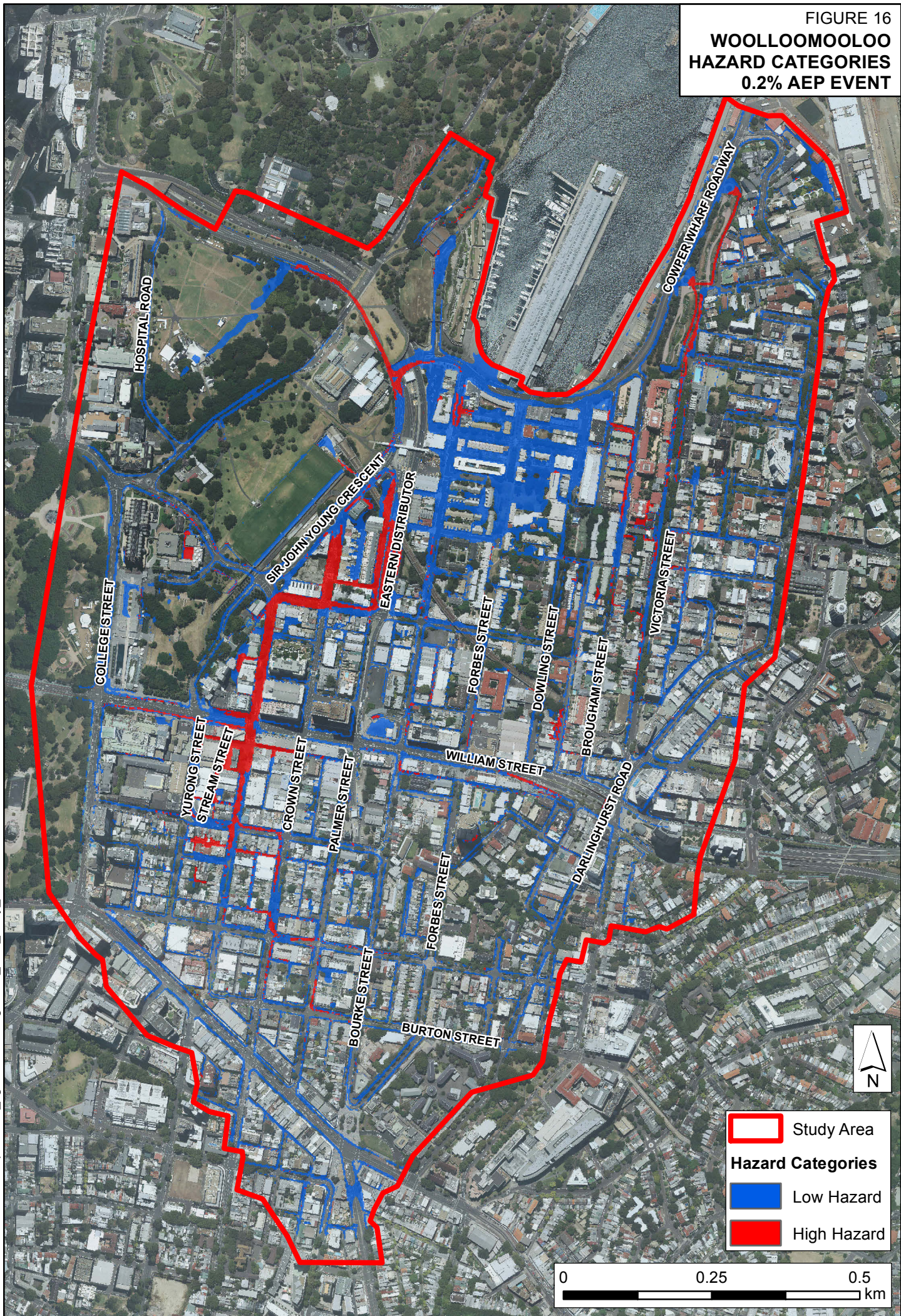


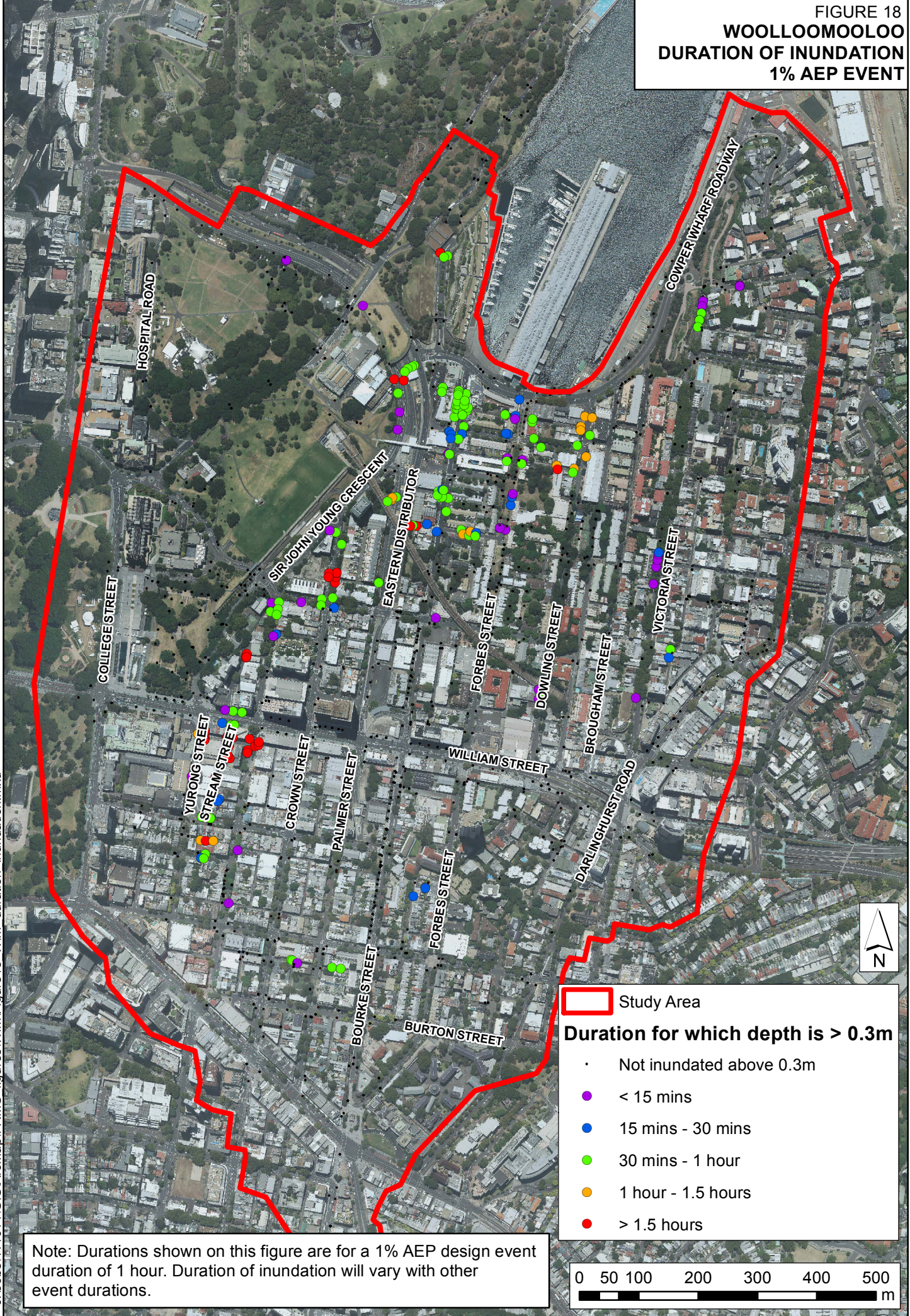


FIGURE 17  
**WOOLLOOMOOLOO  
 HAZARD CATEGORIES  
 PMF EVENT**





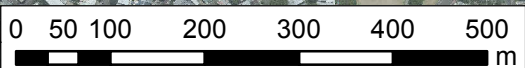
FIGURE 18  
**WOOLLOOMOOLOO**  
**DURATION OF INUNDATION**  
**1% AEP EVENT**



**Study Area**

**Duration for which depth is > 0.3m**

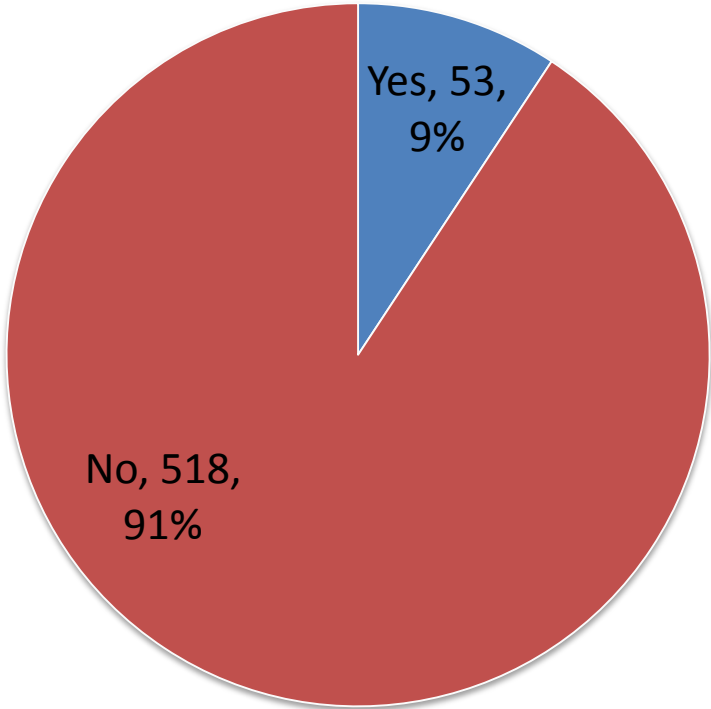
- Not inundated above 0.3m
- < 15 mins
- 15 mins - 30 mins
- 30 mins - 1 hour
- 1 hour - 1.5 hours
- > 1.5 hours



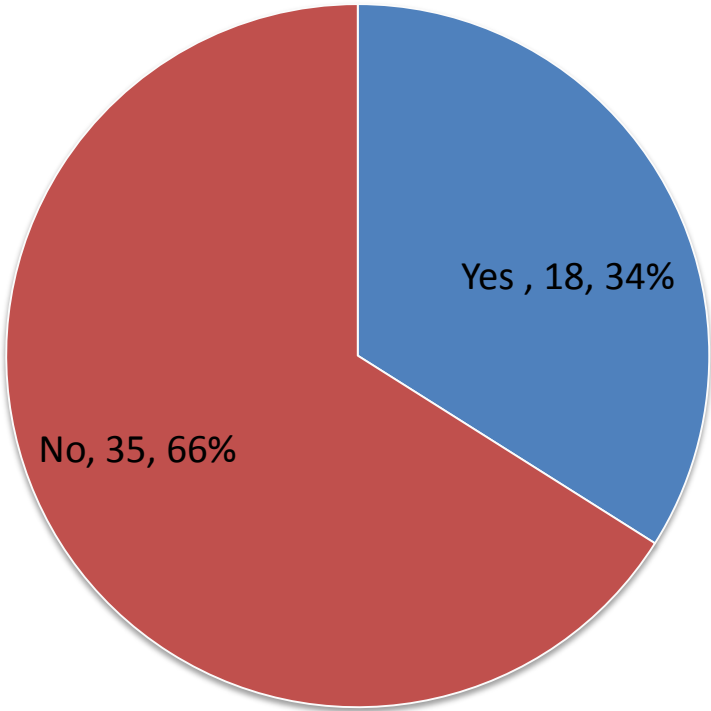
Note: Durations shown on this figure are for a 1% AEP design event duration of 1 hour. Duration of inundation will vary with other event durations.



**A: Number of Respondants**

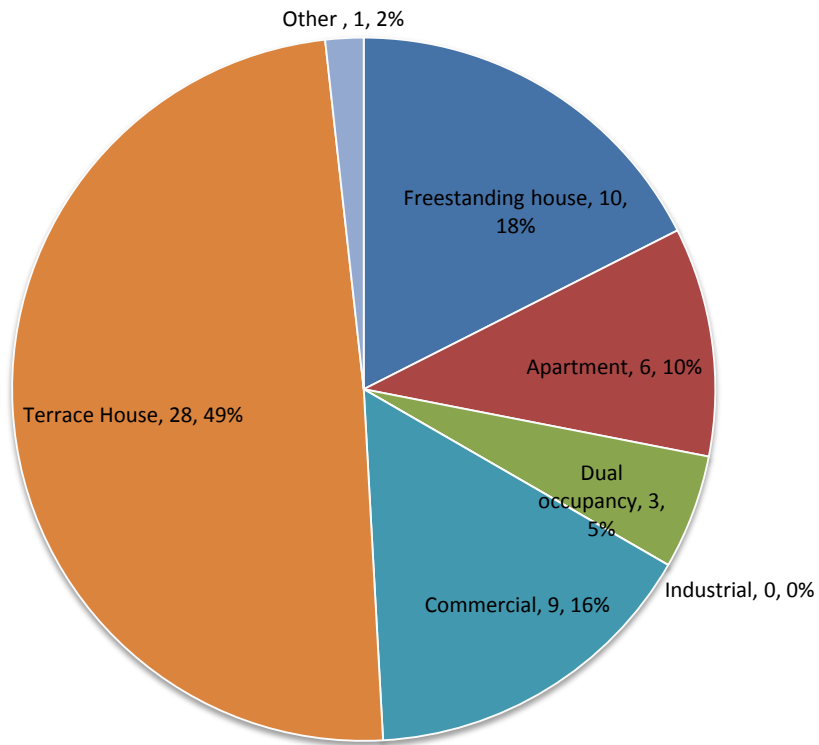


**B: Experienced Flooding**

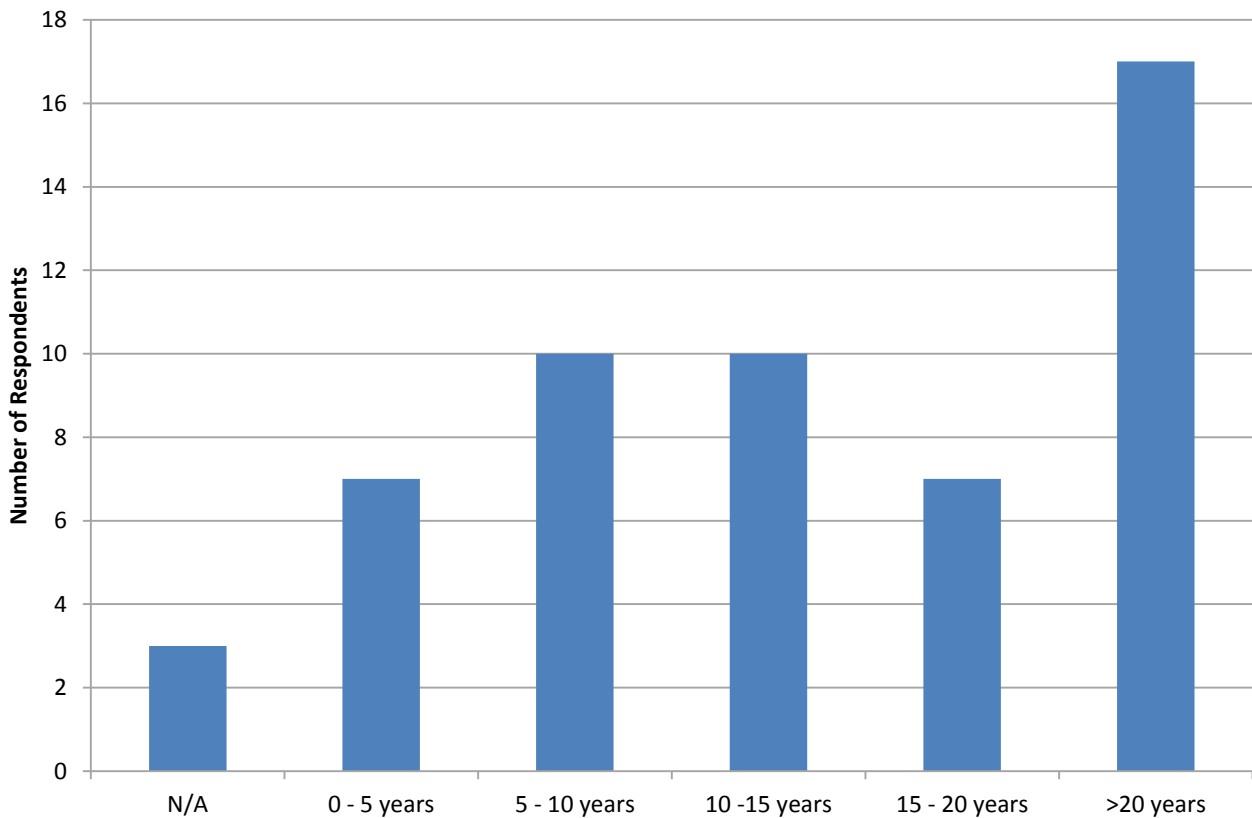




### C: Property Type

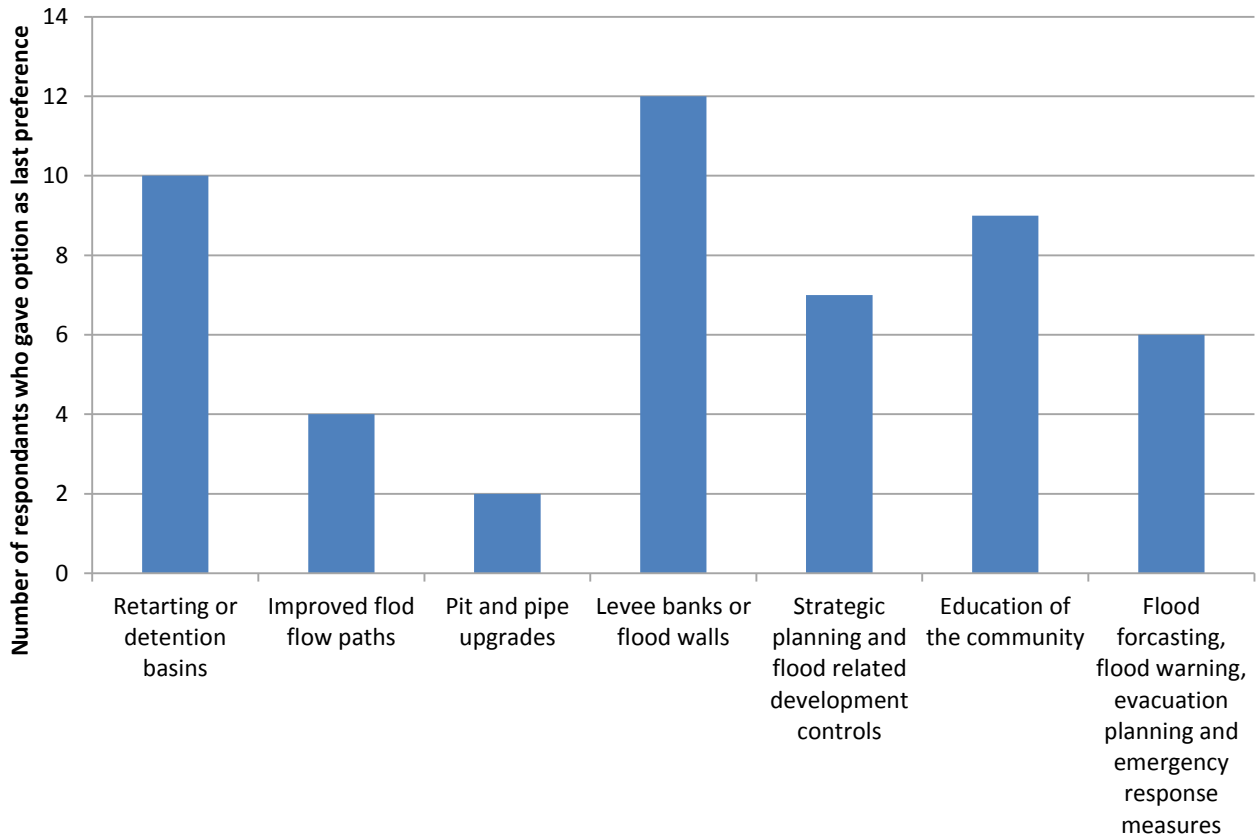


### D: Period of Living/Working/Owning Property

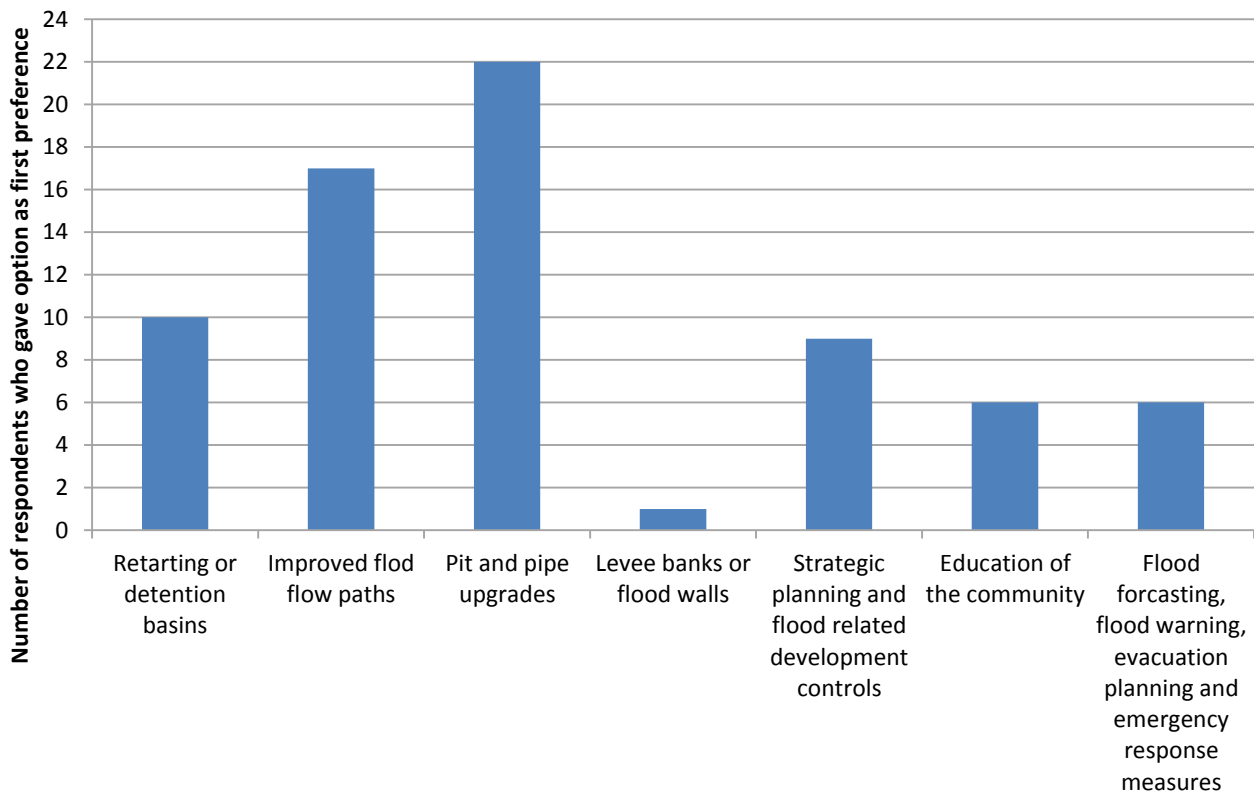




**E: Least Preferred Option**



**F: Most Preferred Option**





### G: Location of Flooding Experience

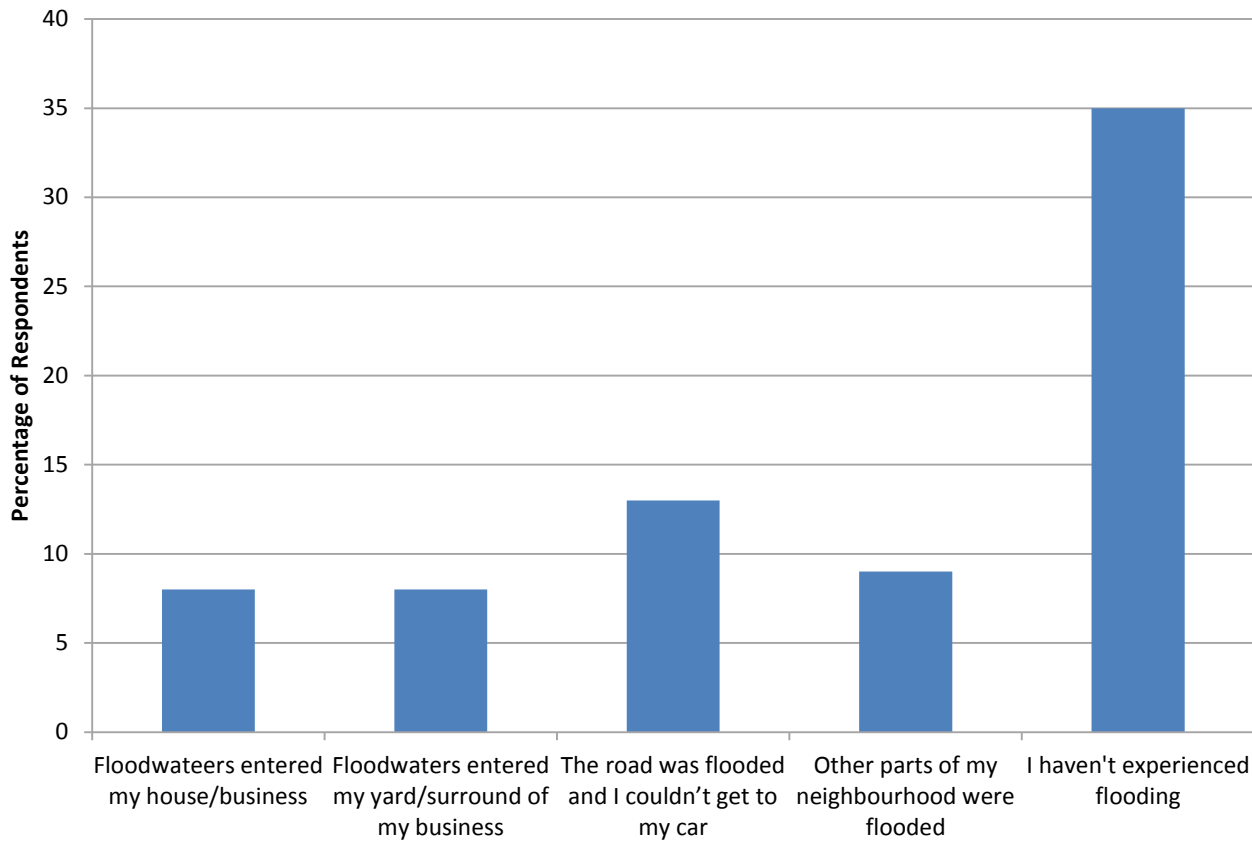
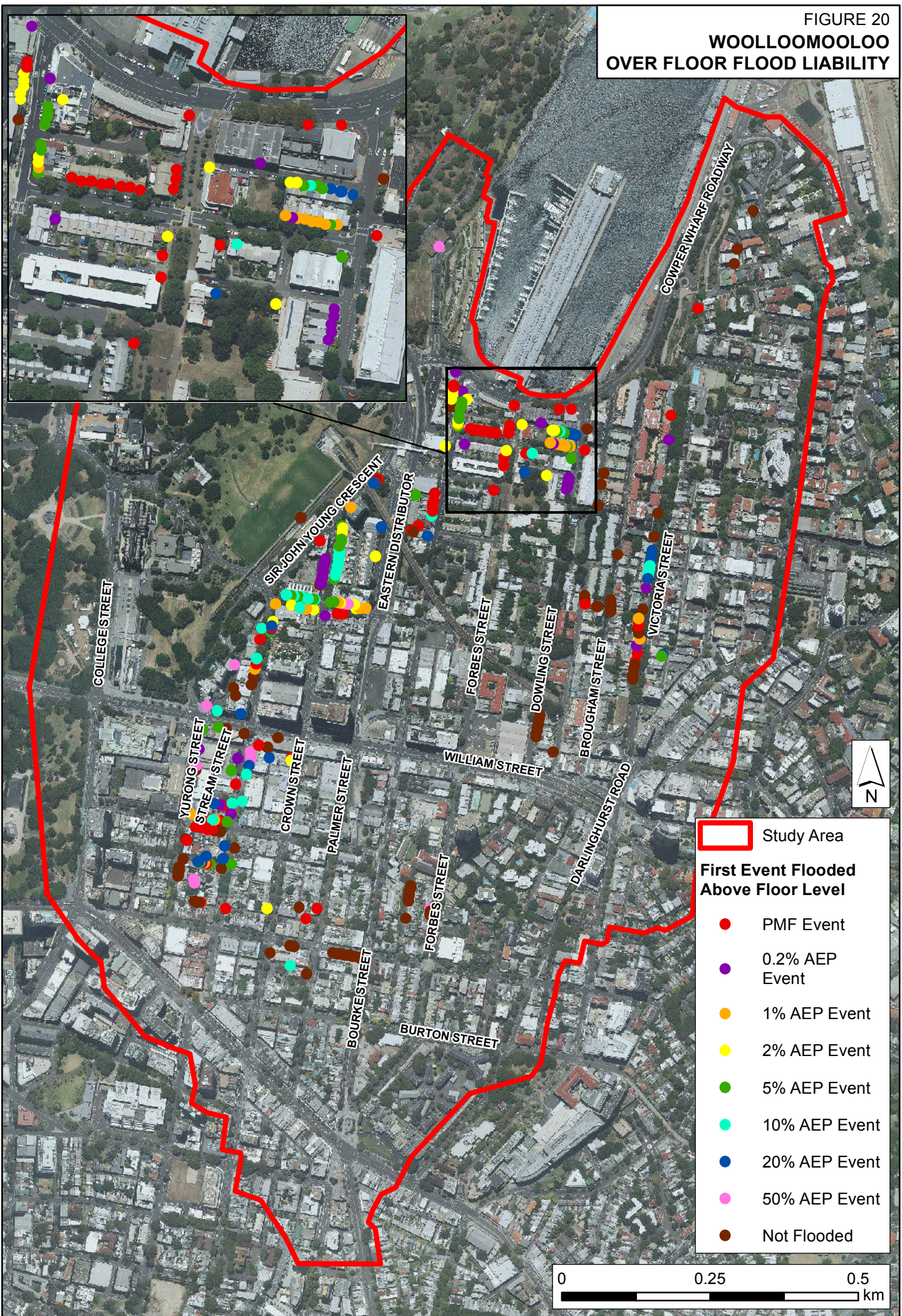




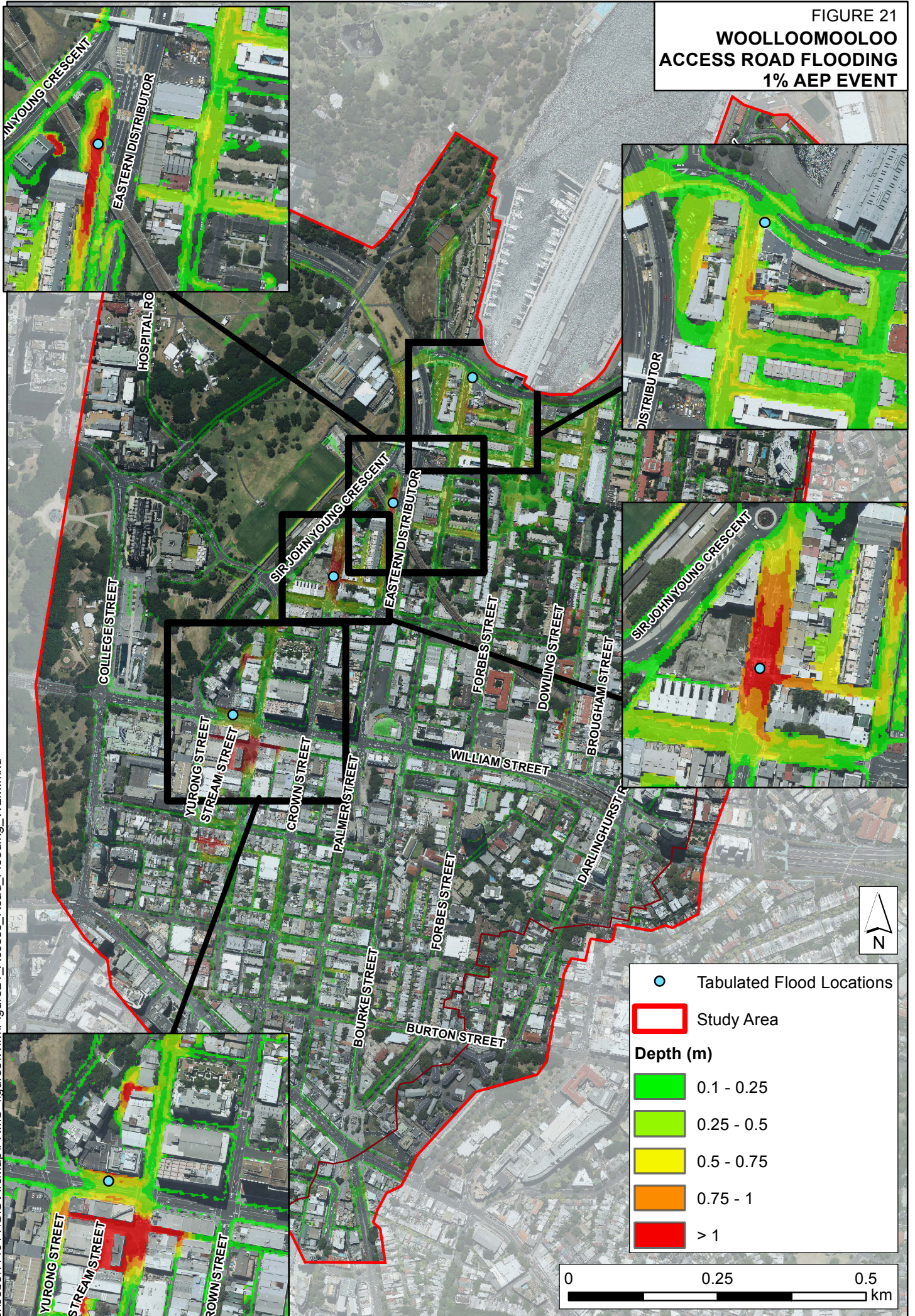
FIGURE 20  
**WOOLLOOMOOLOO  
 OVER FLOOR FLOOD LIABILITY**



J:\Jobs\114014\GIS\ArcMap\FRMS\_figures\Wlm\Figure20\_Over\_Floor\_Flood\_Liability\_WLM.mxd



FIGURE 21  
**WOOLLOOMOOLOO  
 ACCESS ROAD FLOODING  
 1% AEP EVENT**



J:\Jobs\114014\GIS\ArcMap\FRMS\_figures\Wlm\Figure21\_Access\_Road\_Flooding\_WLM.mxd

- Tabulated Flood Locations
- Study Area

**Depth (m)**

- 0.1 - 0.25
- 0.25 - 0.5
- 0.5 - 0.75
- 0.75 - 1
- > 1

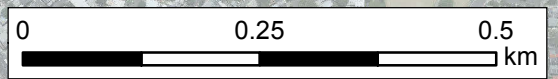
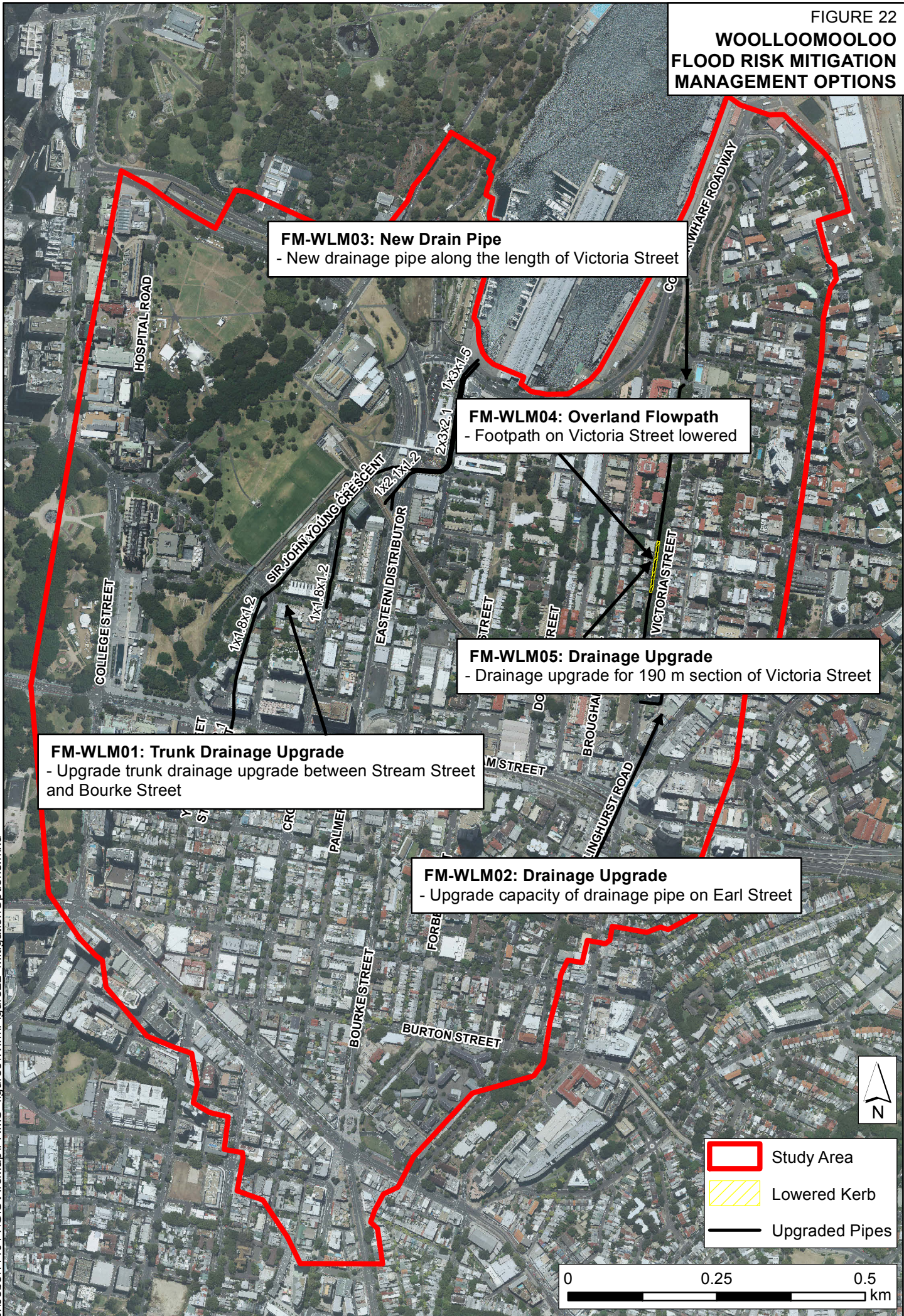




FIGURE 22  
**WOOLLOOMOOLOO  
 FLOOD RISK MITIGATION  
 MANAGEMENT OPTIONS**





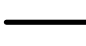
**FM-WLM03: New Drain Pipe**  
 - New drainage pipe along the length of Victoria Street

**FM-WLM04: Overland Flowpath**  
 - Footpath on Victoria Street lowered

**FM-WLM05: Drainage Upgrade**  
 - Drainage upgrade for 190 m section of Victoria Street

**FM-WLM01: Trunk Drainage Upgrade**  
 - Upgrade trunk drainage upgrade between Stream Street and Bourke Street

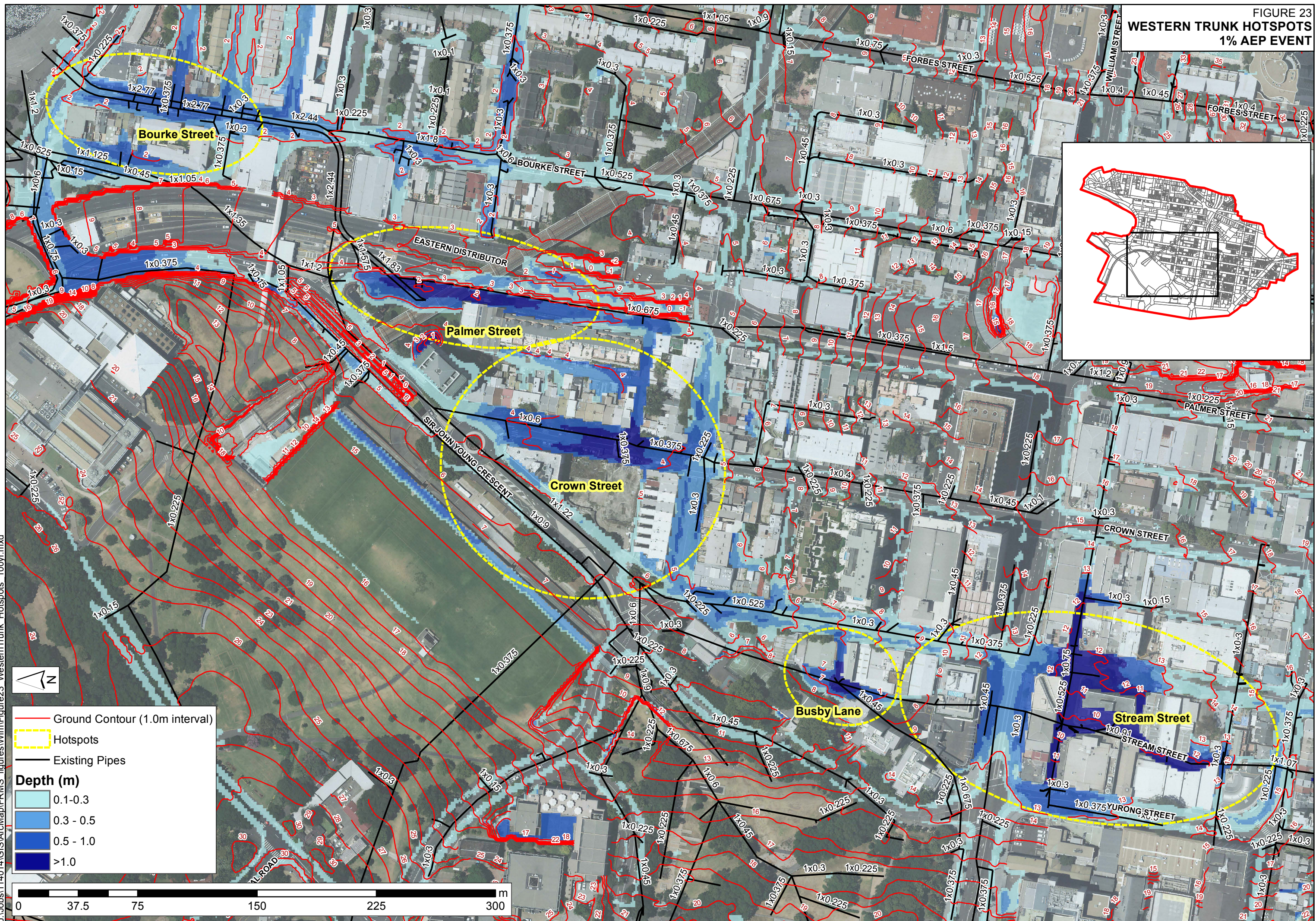
**FM-WLM02: Drainage Upgrade**  
 - Upgrade capacity of drainage pipe on Earl Street

-  Study Area
-  Lowered Kerb
-  Upgraded Pipes

0 0.25 0.5 km



FIGURE 23  
WESTERN TRUNK HOTSPOTS  
1% AEP EVENT



J:\Jobs\114014\GIS\ArcMap\FRMS\_figures\Wim\Figure23\_WesternTrunk\_Hotspots\_100yr.mxd



FIGURE 24  
**OPTION FM - WLM01**  
**10% AEP EVENT FLOOD IMPACT**

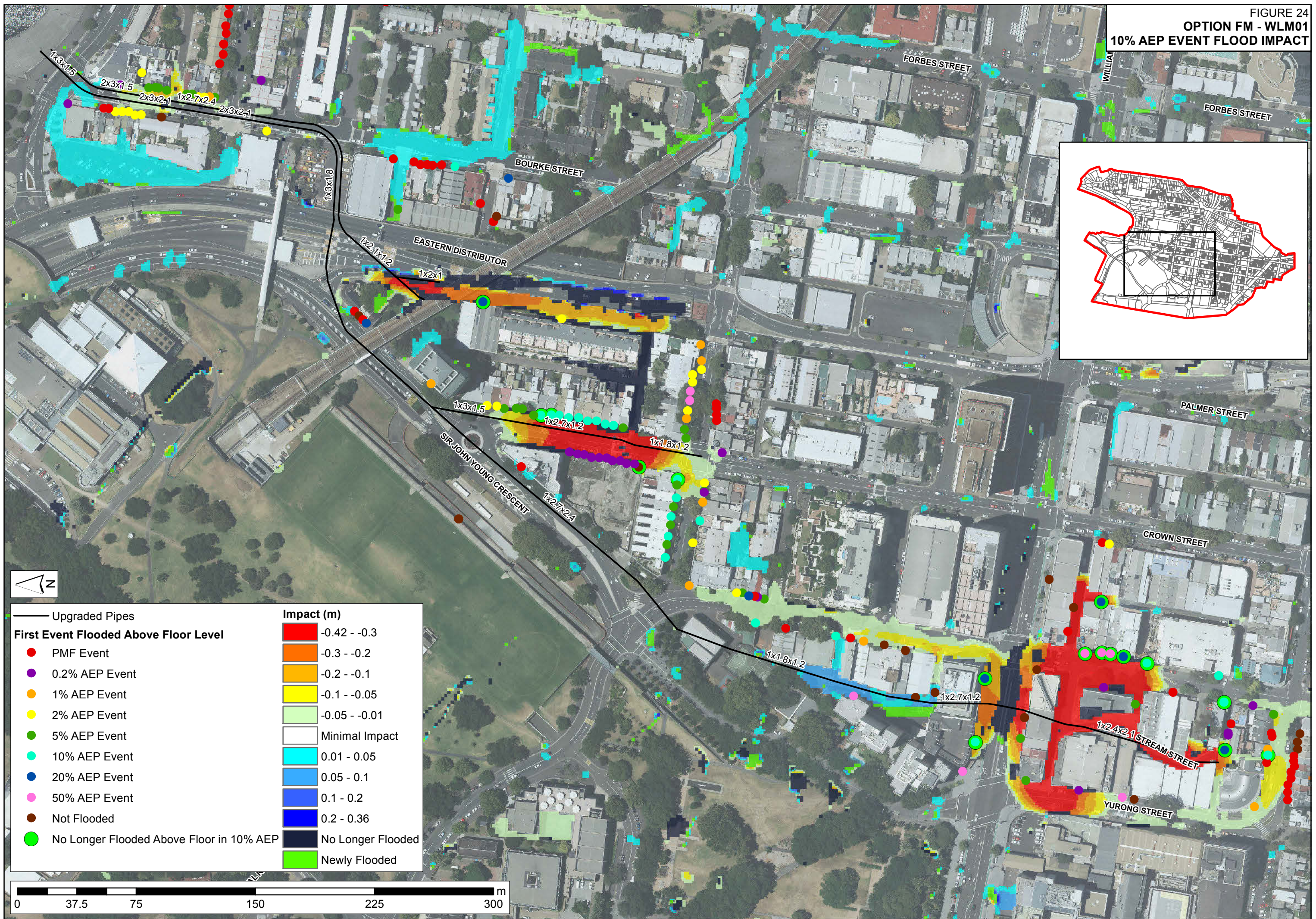
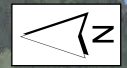
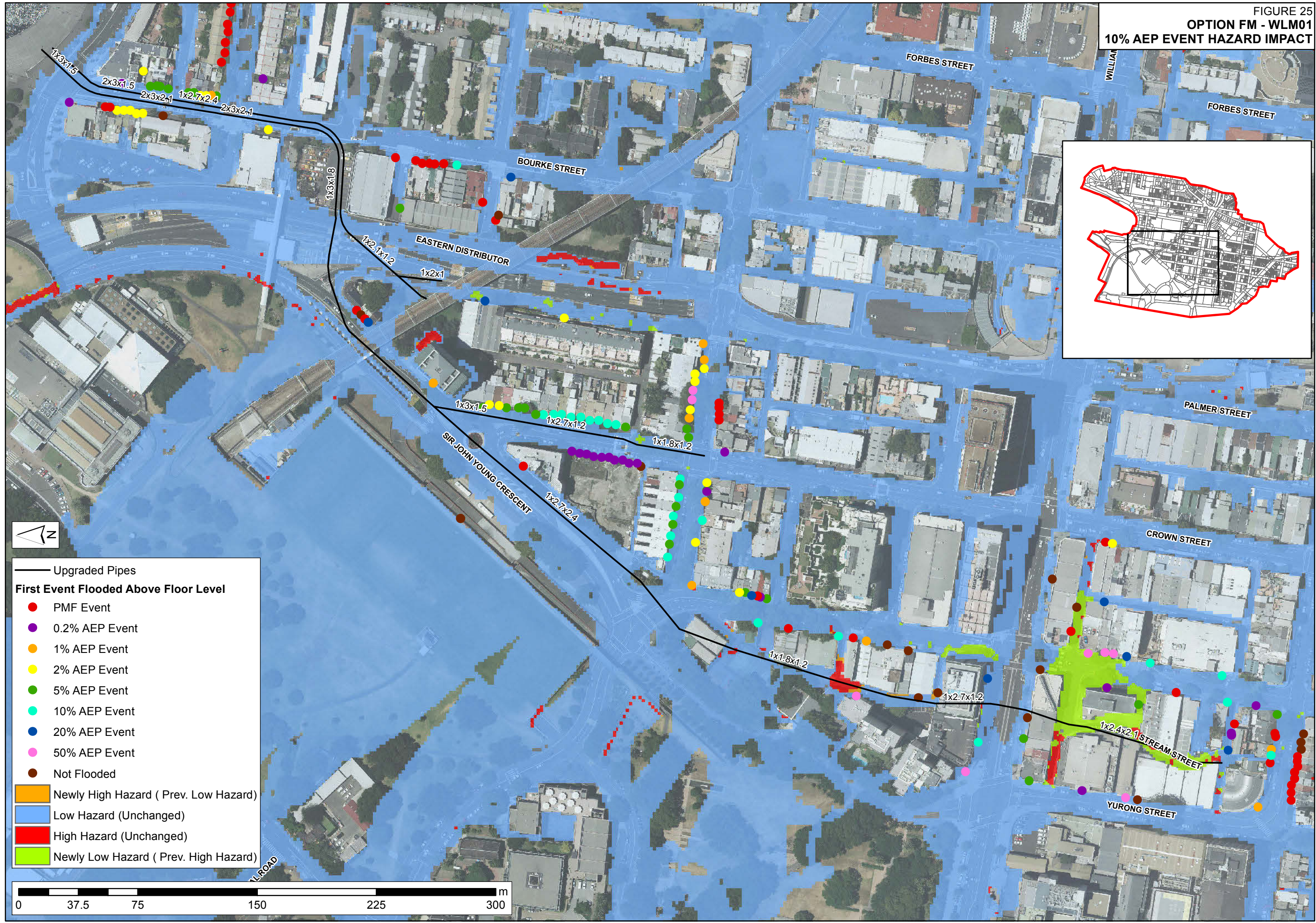




FIGURE 25  
 OPTION FM - WLM01  
 10% AEP EVENT HAZARD IMPACT



- Upgraded Pipes
- First Event Flooded Above Floor Level**
- PMF Event
- 0.2% AEP Event
- 1% AEP Event
- 2% AEP Event
- 5% AEP Event
- 10% AEP Event
- 20% AEP Event
- 50% AEP Event
- Not Flooded
- Newly High Hazard ( Prev. Low Hazard)
- Low Hazard (Unchanged)
- High Hazard (Unchanged)
- Newly Low Hazard ( Prev. High Hazard)

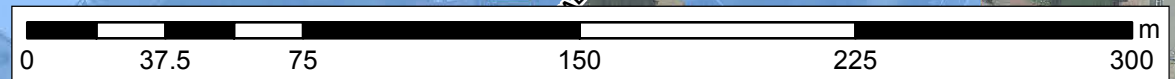




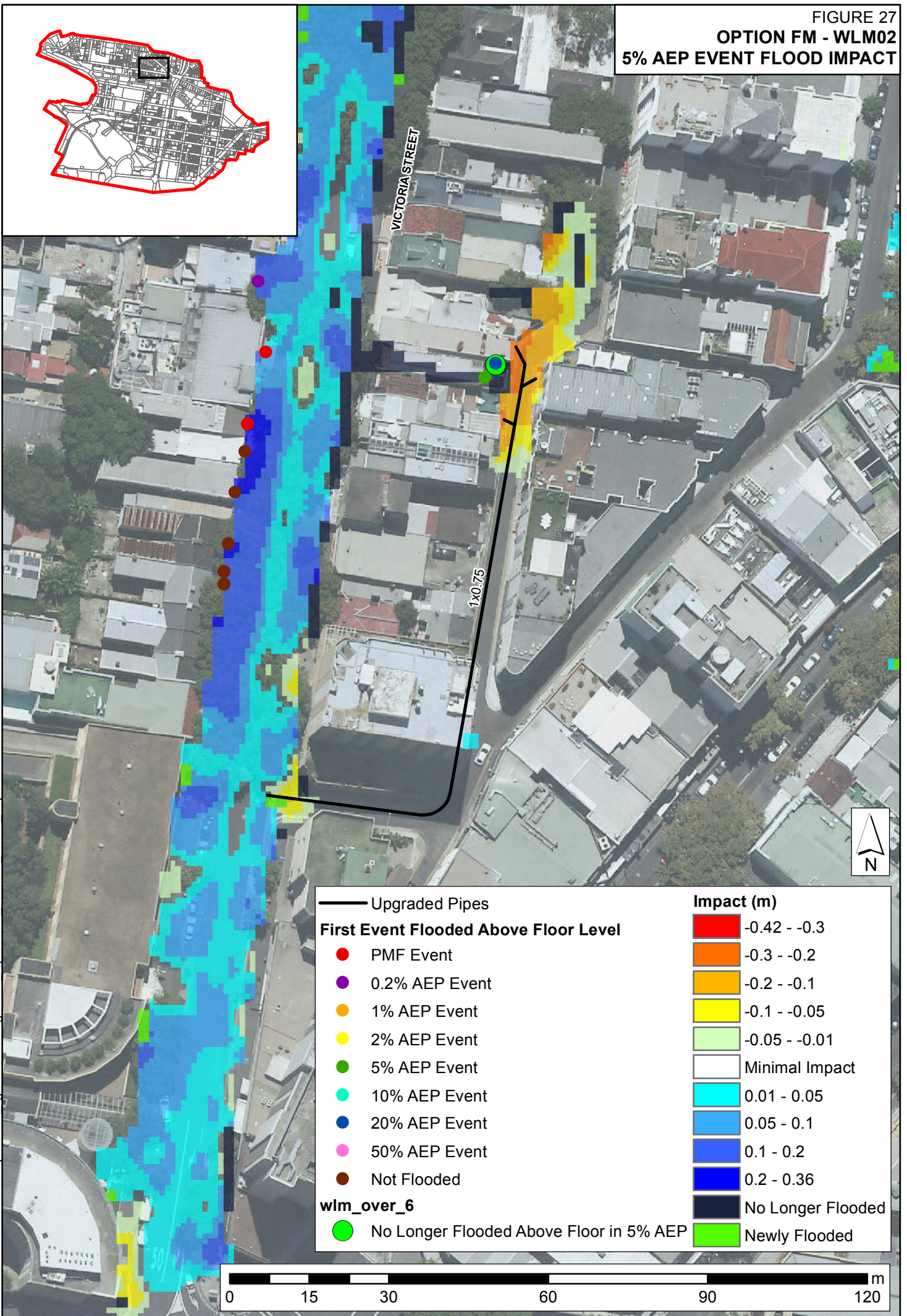
FIGURE 26  
**EARL STREET HOTSPOT**  
**1% AEP EVENT**



J:\Jobs\114014\GIS\ArcMap\FRMS\_figures\Wim\Figure26\_EarlSt\_Hotspot\_100yr.mxd



FIGURE 27  
**OPTION FM - WLM02**  
**5% AEP EVENT FLOOD IMPACT**



— Upgraded Pipes	<b>Impact (m)</b>
<b>First Event Flooded Above Floor Level</b>	-0.42 - -0.3
PMF Event	-0.3 - -0.2
0.2% AEP Event	-0.2 - -0.1
1% AEP Event	-0.1 - -0.05
2% AEP Event	-0.05 - -0.01
5% AEP Event	Minimal Impact
10% AEP Event	0.01 - 0.05
20% AEP Event	0.05 - 0.1
50% AEP Event	0.1 - 0.2
Not Flooded	0.2 - 0.36
<b>wlm_over_6</b>	No Longer Flooded
No Longer Flooded Above Floor in 5% AEP	Newly Flooded

J:\Jobs\114014\GIS\ArcMap\FRMS\_figures\Wlm\Figure27\_OptionFM\_WLM02\_Flood\_Impact.mxd