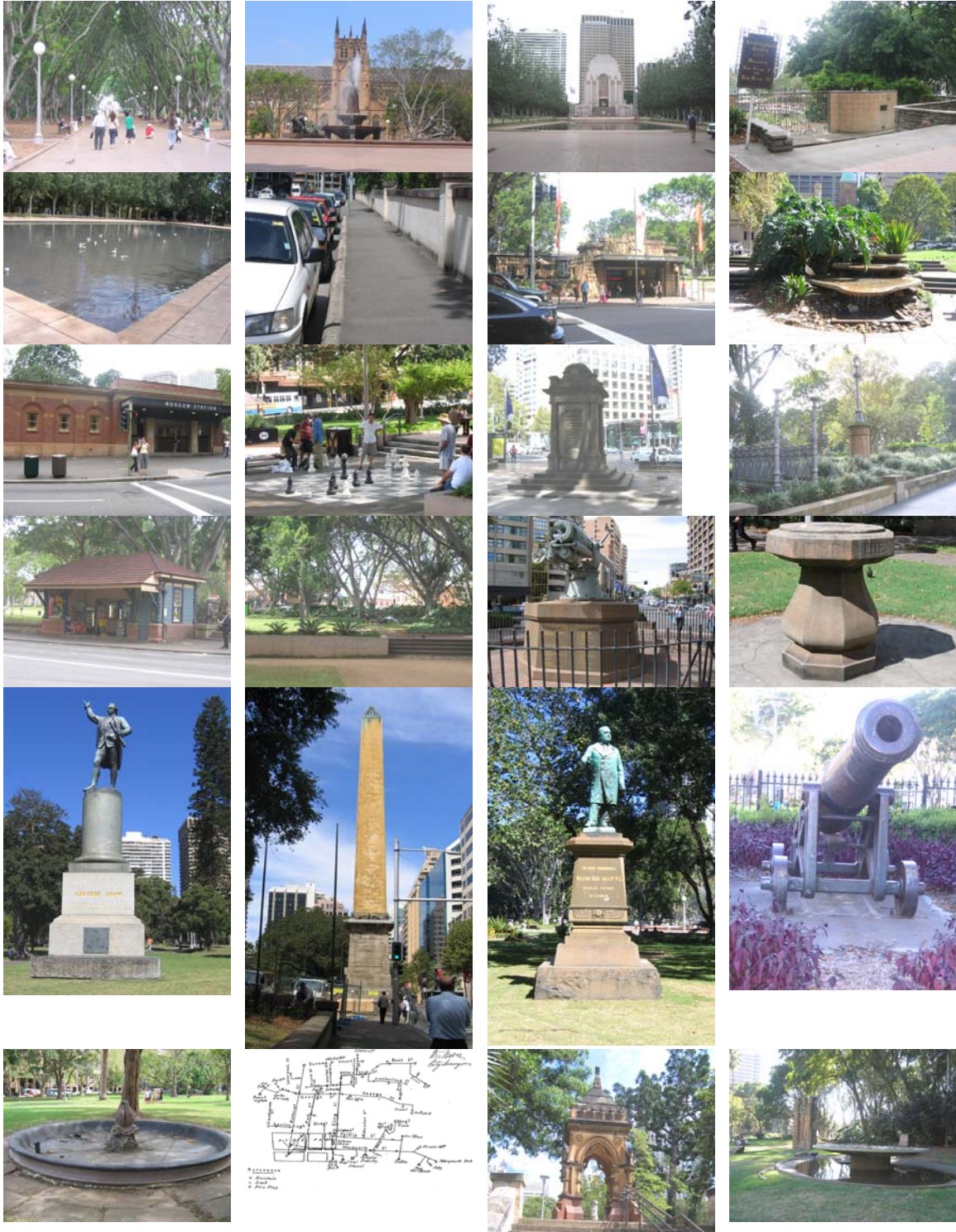


HERITAGE REVIEW STUDY FOR HYDE PARK PLAN OF MANAGEMENT JULY 2006



HBO + EMTB

Architecture | Interior Design | Urban & Landscape Design | **Heritage Conservation** | Facility Management | Project Coordination | Consulting

Hyde Park
Heritage Review

CONTENTS

ITEM	CONTEXT
	Executive summary
1.0	Brief history of Hyde Park
2.0	Current Status
3.0	Assess the significance of the park and its components
4.0	Provide succinct statement of significance that summarises the heritage value of each item.
5.0	Provide updated assessment of each item's condition with broad recommendations for conservation
6.0	Review the current status and relevance of the Hyde park – Sydney –Statement of Significance and Historical Analysis 1987, prepared by Helen Proudfoot
7.0	Review draft Hyde Park Plan of Management and Masterplan 1989 in terms of heritage aspects
8.0	Review the current status and relevance of the Sydney Open Air Museum Hyde Park North conservation reports 1994, prepared by International Conservation Services
9.0	Review current status and relevance of the Hyde Park South Conservation plans for culturally significant elements 1990 prepared by McDonald McPhee Pty Ltd.
10.0	Provide heritage advice to Clouston during the preparation of the Hyde Park Plan of Management and Masterplan.
11.0	Recommendations
Appendix 1	Statements of Significance
Appendix 2	Condition Survey

EXECUTIVE SUMMARY

In 2005 The City of Sydney commissioned **CLOUSTON Associates Pty Ltd** to prepare the HYDE PARK PLAN OF MANAGEMENT AND MASTERPLAN. This study will provide one comprehensive study for the park as a whole, developing one guiding document that directs the future planning, design and management of the park.

As part of the study, a HERITAGE REVIEW STUDY is also required. This report, also commissioned by the City of Sydney, has been prepared by HBO+EMTB Heritage Pty Ltd. The study includes;

- 1.0 Brief history of Hyde Park.
- 2.0 Assess the significance of the park and its components
- 3.0 Provide succinct statements of significance that summarise the heritage value of each item.
- 4.0 Provide updated assessment of each item's condition with broad recommendations for conservation /restoration and prioritising of such works.
- 5.0 Review the current status and relevance of the Hyde Park – Sydney –Statement of Significance and Historical Analysis 1987, prepared by Helen Proudfoot
- 6.0 Review Draft Hyde Park Plan of Management and Masterplan 1989 in terms of heritage aspects
- 7.0 Review the current status and relevance of the Sydney Open Air Museum Hyde Park North Conservation Reports 1994, prepared by International Conservation Services
- 8.0 Review current status and relevance of the Hyde Park South Conservation Plan for Culturally Significant Elements 1990 prepared by McDonald McPhee Pty Ltd.

Hyde Park has a total of 24 monuments and other built items within the Park. Many of these elements have been either donated or commissioned by either individuals, Local, or State Government and have aided in enhancing the cultural significance of Hyde Park. However there are a few items that do not aid in interpreting the significance of Hyde Park and therefore should be either relocated within the park, or removed to ensure all the elements within Hyde Park contribute in a meaningful way to assessed cultural significance of Hyde Park.

This HERITAGE REVIEW STUDY draws from a number of previous studies¹ and reassesses the significance and condition of the monuments and items within Hyde Park to identify which elements are of significance to the Park and provide recommendations for the management for all the monuments and items identified within the Park.

¹ Studies are identified in the Reference Section.

060601/280177/HYDE PARK/report/o-design/analysis/060707 HERITAGE REVIEW.doc © HBO+EMTB 2006	Date: 130706	Rev 05	FINAL RMC	2
--	-----------------	-----------	--------------	---

Hyde Park
Heritage Review

1.0 BRIEF HISTORY

Hyde Park, Sydney, was proclaimed by Governor Macquarie in 1810. Since then the Park has evolved to become one of Sydney's most significant cultural elements. The history of Hyde Park has been well documented in a number of sources. This document does not attempt to rewrite its history but draws from and highlights in a concise form Hyde Park's history through a number of themes.

Public Common

An area of land was set aside by Governor Phillip for a public common, which encompassed the present extent of Hyde Park. This far sighted action has had the effect of preserving the Park in perpetuity and thus it has played a significant role in influencing the form and layout of the city, eventually developing into a public park typical of the Victorian period and as a setting for city buildings along Elizabeth Street with boundary fences and introduced planting.

Civic Space

In 1810 Governor Macquarie proclaimed Hyde Park setting it aside in perpetuity for the people of Sydney and securing its area, which has survived except for reduction of the margins for road widenings in the 20th century.

At various times the park declined in condition and the standard of upkeep. Early in the twentieth century, public safety became an issue as the park was frequented by disreputable elements of Sydney's society.

World War I

The achievement of Federation and the experience of World War I developed Australia's nationalist spirit, which influenced the way many civic places were used and appreciated. Public parks and squares were chosen as places for monuments and memorials to Australia's service personnel. Hyde Park as Sydney's pre-eminent civic space was to house the State's main war memorial and other monuments associated with the war.

Railway Plans

An underground railway was planned in 1916 but did not proceed until 1922. Excavation occurs throughout the park in a period of major upheaval.

Competition

Following concern about the Park's future development after the disruption of the railway construction a competition was held in 1926 for the design of a new Hyde Park Plan.

The competition was won by Norman Weekes after which the assessors, including Sir John Sulman, amended the plan.

HBO + EMTB

Architecture | Interior Design | Urban & Landscape Design | **Heritage Conservation** | Facility Management | Project Coordination | Consulting

Hyde Park
Heritage Review

Part of the vision was to place major monuments at each end of the main vista aligned with Macquarie Street, which ultimately saw the Anzac Memorial, designed by Bruce Dellit, positioned at the south end of the vista and the Archibald Memorial Fountain terminating the vista to the north. The avenue of fig trees has matured over the intervening years to reinforce the vista.

Much of the work undertaken in the Park in the 1930's was the subject of unemployment relief programmes.

Depression Relief Fund program

The construction of Hyde Park was assisted with labour employed as part of the Depression Relief Fund Programme, The program was also responsible for the construction of the ANZAC Pool of Remembrance.

Role of Women and Children in society.

In the 1950's Hyde Park saw the introduction of the Long Day Child care and the Women's Rest Centre conveniences for women and their children visiting the city.

Planning and Conservation

In the late 1980s the City Council saw a need to re-assess the Park and improve the condition of its various components: plantings, paths, walls and monuments. A draft Plan of Management and Master plan was produced in 1989. Through the early 1990s a works programme was implemented to upgrade pathways, conserve monuments and stone walls and to build new stone walls along College Street in Hyde Park South. The Works Depot was removed from the eastern side of the main avenue of Hyde Park north during this period.

HBO + EMTB

Architecture | Interior Design | Urban & Landscape Design | **Heritage Conservation** | Facility Management | Project Coordination | Consulting

Hyde Park
Heritage Review

The following time line provides an outline of the evolution of the site and monuments and other object within Hyde Park which are important to the Park and its assessed significance.

TIME LINE

DATE	DESCRIPTION
1770	Captain Cook (1729-1779) discovered the east coast of Australia – Statue in park commemorates him.
1788	Captain Phillip establishes colony at Sydney. Land set aside by Phillip as public “commons”.
1810	Hyde Park proclaimed by Governor Lachlan Macquarie (1761-1824) Governor of New South Wales.
1832	William and Macquarie Street constructed severing Park and establishing axis.
1837	First major planting in the park by Alan Cunningham of the Sydney Botanic Gardens.
1854	Hyde Park Committee established.
1857	Thornton Obelisk constructed, sited at entrance of Park at intersection of Elizabeth and Bathurst Street
1861	Planting undertaken, predominately along pathways.
1867	Additional planting undertaken, predominately along pathways.
1876	Parkland enclosed with two railed hardwood fence
1869	Captain Cook Statue (base) sited within Hyde Park in existing location,
1878-1896	Charles Moore(1820-1905) trustee of Hyde Park.
1871	Additional planting undertaken.
1876	Parkland redefined and enclosed with dwarf stone wall and iron palisade fence.
1878	Hyde Park formally dedicated.
1878	Hyde Park corners were demarcated with gates and sandstone piers surmounted by gas lamps.
1879	Captain Cook Statue (statue) erected.
1888	John Baptist Memorial sited at Hyde Park in existing location.
1881	Frazer Memorial sited at Hyde Park at the corner of Oxford and College Street. Fort Macquarie Cannon placed in park.
1905	Hyde Park, illumination of whole Park completed.
1908	Hyde Park was redefined following the widening of Elizabeth and Liverpool Streets by 5.5m and 4.6m.
1910	Bus Shelter constructed.
1912	Hyde Park was redefined following the widening of College Street
1914	Sundial repaired (date of erection not known)
1914-1918	World War I
1916	Hyde Park redefined following the widening of Park Street.
1919-1926	Plans for Underground railway. Excavation began in Hyde Park with the felling of main avenue figs.
1917	Frazer Memorial relocated to north east corner of Pool of Remembrance..
1917	Emden Gun , gift from the Commonwealth, sited at Hyde park in existing location
1919	William Bede Dalley statue erected.
1926	Hyde Park competition was held. Won by Norman Weekes
1927	Hyde Park winning design No.4 amended and adopted by Sydney Council in August. Fort Macquarie Cannon relocated in Hyde Park
1928	Hyde Park was redefined following the further widening of College Street Underground railways construction
1929	Stock market crash 29 November 1929. Work in Park in 1930s by Unemployment Relief.
1930	Anzac Memorial competition won by Bruce Dellit
1932	Archibald Fountain sited at Hyde Park Hyde Park perimeter walls built to new design. British Lawn established. Sandringham Gardens and Memorial Gates.
1934	Frazer Memorial relocated to current location
1934	Pool of Remembrance constructed St James Station constructed Museum Station constructed
1939-1945	World War II
1954	Queen Elizabeth II dedicated Sandringham Memorial.
1961	F.J.Walker memorial Fountain sited at Hyde Park in existing location.
1983	Nagoya gardens constructed Busby's Bore Fountain
1990-1991	Upgrade and conservation of monuments in Hyde Park South Upgrade and conservation of monuments in Hyde Park North Family centre demolished

060601/280177/HYDE PARK/report/o-design/analysis/060707 HERITAGE REVIEW.doc © HBO+EMTB 2006	Date: 130706	Rev 05	FINAL RMC	6
--	-----------------	-----------	--------------	---

HBO + EMTB

Architecture | Interior Design | Urban & Landscape Design | **Heritage Conservation** | Facility Management | Project Coordination | Consulting

Hyde Park
Heritage Review

2.0 CURRENT HERITAGE STATUS

Hyde Park, Sydney has been identified as an item of Local Significance, scheduled in Sydney City, Local Heritage Environment Plan, 2005. However many of the monuments and items within the Park, with the exception of a number that are owned and or maintained by State agencies, are not individually identified. The following table identifies the current statutory heritage status of the Park and the items within.

HERITAGE ITEMS WITHIN HYDE PARK				
No.	Identified items	Current Status		
		Heritage Statutory	Management	Ownership
1	Hyde Park	Local – CSH LEP3 State – N/A Other – N/A	City of Sydney	Crown Land
2	Archibald Memorial Fountain	Local - N/A State – N/A Other – N/A	City of Sydney	City of Sydney
3	ANZAC Memorial	N/A	Trustee of Anzac Memorial	Trustee of Anzac Memorial
4	Pool of Remembrance	N/A	Trustee of Anzac Memorial	Trustee of Anzac Memorial
5	Stone perimeter wall and Steps	Local - N/A State – N/A Other – N/A	City of Sydney	Crown Land
6	St James Station	Local – CSH LEP 1 State – Heritage Register Other – SRA s170	State Rail Authority	State Rail Authority
7	Museum Station	Local – CSHLEP 1 State – Heritage Register Other – SRA s170	State Rail Authority	State Rail Authority
8	William Bede Dalley	Local - N/A State – N/A Other - N/A	City of Sydney	City of Sydney
9	Oddfellows Memorial	Local - N/A State – N/A Other – N/A	City of Sydney	City of Sydney
10	Captain Cook Statue	Local - N/A State – N/A Other – N/A	City of Sydney	City of Sydney
11	Frazer Fountain	Local - N/A State – N/A Other – N/A	City of Sydney	City of Sydney
12	Fort Macquarie Cannon	Local - N/A State – N/A Other – N/A	City of Sydney	City of Sydney
13	Emden Gun	Local - N/A State – N/A Other – N/A	City of Sydney	City of Sydney
14	Thornton Obelisk	Local – N/A State – Heritage Register Other – Sydney Water s170	Sydney Water	Crown Land/Sydney Water
15	Former Tram Shelter	Local – CSH LEP 1 State – N/A Other – N/A	City of Sydney	City of Sydney
16	Sundial	Local – N/A State – N/A Other – N/A	City of Sydney	City of Sydney

060601/280177/HYDE PARK/report/o-design/analysis/060707 HERITAGE REVIEW.doc © HBO+EMTB 2006	Date: 130706	Rev 05	FINAL RMC	7
--	-----------------	-----------	--------------	---

HBO + EMTB

Architecture | Interior Design | Urban & Landscape Design | **Heritage Conservation** | Facility Management | Project Coordination | Consulting

Hyde Park Heritage Review

17	Former Underground Public Conveniences	Local – N/A State – N/A Other – N/A	City of Sydney	City of Sydney
18	Busby's Bore Fountain	Local – N/A State – N/A Other – N/A	City of Sydney	City of Sydney
19	Sandringham Gardens & Memorial gates.	Local – N/A State – N/A Other – N/A	City of Sydney	City of Sydney
20	Nagoya Gardens	Local – N/A State – N/A Other – N/A	City of Sydney	City of Sydney
21	Chess Board	Local – N/A State – N/A Other – N/A	City of Sydney	City of Sydney
22	F.J. Walker Memorial	Local – N/A State – N/A Other – N/A	City of Sydney	City of Sydney
23	John Baptist Fountain	Local – N/A State – N/A Other – N/A	City of Sydney	City of Sydney
24	Busby's Bore	Local – CSH LEP3 State – Heritage Register Other – Sydney Waters 170	Sydney Water	Sydney Water

Many of the monuments and items within Hyde Park are worthy of listing, having individual significance that contributes to the cultural significance of the Park as a whole, while others detract from the Park's significance. The heritage review study has prepared individual statements of significance and condition surveys of each identified item to reassess the heritage status and formulate recommendations for exclusions and/or additional inclusions.

Hyde Park
Heritage Review

3.0 ASSESS THE SIGNIFICANCE OF THE PARK AND ITS COMPONENTS

Hyde Park, Sydney, is located along the eastern fringe of Sydney's Central Business District. The Park has been part of Sydney's history, dedicated for ceremonial and recreational use, for over 200 years. Today the Park is still used primarily for recreational purposes, Over time it has evolved as a unique cultural landscape due to its history, symbolic values, monuments and other structures, walls statues, memorials, buildings, walls.

Over the years a number of studies have been commissioned, however to date there is no document that provides one comprehensive survey assessing the significance of the Park and its individual items. This survey aims to draw together all past surveys, re-assess and prepare succinct statements of significance for the Park and each built component, ie: monuments, within.

The assessment of heritage significance of Hyde Park and its components is based on the conservation principles set out in the ICOMOS Australia, Burra Charter, November 1999. The assessment defines the importance of the item and its cultural significance.

The concept of cultural significance.

Article 1.1 of the Burra Charter, defines Cultural Significance as *"the aesthetic, historical, scientific/technical or social value for past, present or future generations."* The general approach to assessing the nature of significance is based on that of The Conservation Plan (J.S. Kerr. 1996), and relies on the following aspects:

Demonstrative Ability of a place to demonstrate its past and present through physical evidence (of philosophy, custom or design, process, use, taste, techniques and material or events)

Associational Value and links without discoverable physical evidence (association with events or development, impact of persons on place or of place on persons, or mythological or symbolic association)

Formal or Aesthetic Value, and qualities (scale, form, materials and texture, relationships and views, and other non-visual sensory qualities).

NSW HERITAGE OFFICE METHODOLOGY

Hyde Park and its components have been evaluated according to the assessment criteria established by the NSW Heritage Office, published in the New South Wales Heritage Manual, 2000 This methodology is generally accepted for evaluations of heritage significance. The criteria are part of the system of assessment that is centred on the Burra Charter of Australia, ICOMOS. The assessment of heritage significance is formalised through legislation in the NSW Heritage Act 1977 (amended 1999).

Criterion a) an item is important in the course, or pattern, of NSW's cultural or natural history (or the cultural or natural history of the local area.

HBO + EMTB

Architecture | Interior Design | Urban & Landscape Design | **Heritage Conservation** | Facility Management | Project Coordination | Consulting

Hyde Park
Heritage Review

- Criterion b) an item has strong or special association with the life or works of a person, or group of persons, of importance in NSW's cultural or natural history (or the cultural or natural history of the local area);
- Criterion c) an item is important in demonstrating aesthetic characteristics and/or a high degree of creative or technical achievement in NSW (or the local area);
- Criterion d) an item has strong or special association with a particular community or cultural group in NSW (or the local area) for social, cultural or spiritual reasons;
- Criterion e) an item has potential to yield information that will contribute to an understanding of NSW's cultural or natural history (or the cultural or natural history of the local area);
- Criterion f) an item possesses uncommon, rare or endangered aspects of NSW's cultural or natural history (or the cultural or natural history of the local area);
- Criterion g) an item is important in demonstrating the principal characteristics of a class of NSW's
Cultural or natural places
Cultural or natural environments, (or a class of the local area's)
Cultural or natural history,
Cultural or natural environments).

Each of the above criteria has been applied to the site and or component, to establish the broader significance for the property to provide a context for assessment for Hyde Park.

Statements of Significance (appended) have been prepared for each item which include the criteria noting its inclusion or exclusion addresses the criteria.

HBO + EMTB

Hyde Park
Heritage Review

EVALUATION OF SIGNIFICANCE

A broader assessment method for the significance of Hyde Park, Sydney, is provided in the following schedule, which encapsulates the preceding set of criteria for significance and introduces the concept of the degree of significance.

Assessment Significance	Justification	Acceptable Conservation Practice	Burra Charter Article
Assessment of Exceptional Significance	Rare or outstanding elements directly contributing to the items local or State significance.	Preservation, restoration or reconstruction. Components are likely to be adversely affected by adaptation.	Article 1,11-19
Items of considerable or High Significance	High degree of original fabric. Demonstrates a key element of the item's significance. Alterations do not detract significance.	Preservation, Restoration, or Reconstruction. Adaptation may also be acceptable provided the quantum of change involves is limited in scope and has no adverse effect on the adjacent spaces or fabric of exceptional significance.	Article 1, 11-22
Items of Moderate Significance	Alterations and modified elements. Elements with little heritage value, but which contribute to the overall significance of the item.	Preservation, restoration or Reconstruction or adaptation where possible. Where removal occurs for structural reasons, original floor plans should be capable of interpretation of replacement fabric if possible	Article 1, 11-22
Items of Little or Low Significance	Alterations detract from significance. Difficult to interpret.	Preservation, Restoration or Adaptation where possible. Otherwise removal may be permitted.	Article 1, 11-22
Items which are Intrusive	Damage to the item's heritage significance.	Modification or removal in order that the significance of the building is enhanced but subject to existing and future use requirements	
Items that have neutral significance	Does not impact on the heritage significance of the item.	Items that do not add nor subtract from the items heritage significance.	

Hyde Park
Heritage Review

4.0 PROVIDE SUCCINCT STATEMENT OF SIGNIFICANCE THAT SUMMARISES THE HERITAGE VALUE OF EACH ITEM.

Hyde Park has a number of components within its boundaries that contribute to the cultural significance of the park. The following index illustrates the location of each of the items that have been assessed identified by a number. The Statement of Significance for each item follows this numbering sequence with a prefix **S**. The Statements of Significance are appended to this report



5.0 PROVIDE UPDATED ASSESSMENT OF EACH ITEM'S CONDITION WITH BROAD RECOMMENDATIONS FOR CONSERVATION /RESTORATION AND PRIORITISING OF SUCH WORKS.

Each item identified by a Statement of Significance has had an updated assessment made of its condition complete with recommendations for conservation and/or restoration. Each item's assessment has been identified with a prefix **C** and an numbering system corresponding to that of the Statement of Significance. The Condition Surveys are appended to this report.

6.0 REVIEW OF THE CURRENT STATUS AND RELEVANCE OF THE HYDE PARK – SYDNEY – STATEMENT OF SIGNIFICANCE AND HISTORICAL ANALYSIS 1987, PREPARED BY HELEN PROUDFOOT

The Statement of Significance and Historical Analysis, 1987, prepared by Helen Proudfoot is a comprehensive report on Hyde Park. It provides a comprehensive historical analysis of the Park identifying the events that have influenced its form and appearance and discusses those elements that contribute to the cultural significance of Hyde Park for the years up to the 1980's.

This report still stands as a valuable resource and authoritative account of the Parks historical origin as and the societal and economical processes that have formed it. Importantly the report raises the issue of the suitability of all the built items in the Park.

Over the past twenty years the Park has undergone some physical transformations, which have lead to changes in the use of some sections. These changes include the demolition and removal of the Long Day Child Care and Womens' Rest Centre located within Hyde Park South, at the corner of Park and Elizabeth Streets, and the closure of the underground toilets at the southern end of Hyde Park North and adaptation of the Railway station amenity buildings as Cafés. These minor changes have not seriously diminished the ability to understand and appreciate cultural significance of the Park today.

7.0 REVIEW OF DRAFT HYDE PARK PLAN OF MANAGEMENT AND MASTERPLAN 1989 IN TERMS OF HERITAGE ASPECTS

The Draft Hyde Park Plan of Management and Masterplan, 1989 was prepared between 1987 - 1989. It was the first plan prepared by the City of Sydney (former Sydney Council) to control the future development of Hyde Park. The plan was a comprehensive study that identified aims and objectives as noted below:

- 1 To ensure recognition of the overall contribution that Hyde Park makes to the welfare of the City of Sydney and its inhabitants.
- 2 To ensure a balance between conservation of the Park's significant resources and adaptation to contemporary usage.
- 3 To ensure a consistent approach to management and maintenance appropriate to the most culturally significant urban park in Australia.

HBO + EMTB

Architecture | Interior Design | Urban & Landscape Design | **Heritage Conservation** | Facility Management | Project Coordination | Consulting

Hyde Park
Heritage Review

Five studies were undertaken each having a bearing on the heritage significance of the Park. The studies are noted below:

- 1 Place of Cultural Significance
- 2 Formal Landscape
- 3 Place for Recreation
- 4 Natural Environment and Garden
- 5 Management Options

In addition nine major values and issues identified were identified, which although not directly related to the heritage aspects of the park contribute either positively or negatively to the interpretation of the park within a cultural landscape. To aid in the review all nine (9) values have been noted below;

VALUES AND ISSUES IDENTIFIED		
1	Values	Hyde Park is Australia's oldest public park and major example of a formal urban landscape.
	Issues	<i>Inadequate protection at Local, State and Federal Government level to ensure the Park's inviolability</i> <i>Ignorance or disregard of the 1927 Assessors Report has resulted in the deterioration of the formal layout of the park and its unity.</i>
2	Values	Importance of parks' location as an historic focal point, open space and boundary.
	Issues	<i>The Park is not clearly defined as an historic focal point, boundary and road junction</i>
3	Values	The hierarchy of avenues as the principal feature of the Park's formal layout reinforced by the Archibald Fountain, the War Memorial and other formal elements.
	Issues	<i>All elements of cultural significance require registration and urgent programme of restoration to ensure their conservation.</i>
		<i>The avenue hierarchy is discontinuous and inconsistent in treatment of paving surface and tree planting with vistas to fountains, memorials obscured.</i>
		<i>Many areas and elements within the Park are informal in character and conflict with the essential formality of the Park.</i>
		<i>Access to the Park and between the two portions is hazardous and inconvenient for both pedestrians and maintenance vehicles.</i>
<i>Certain avenues do not cater for direct routes through the Park which have developed with the growth of the city.</i>		
4	Values	Unquestioned prime use since 1810 as a place for unorganised passive recreation.
	Issues	<i>Promotion and advertising favouring private, commercial groups or individuals in forms of usage is unsympathetic to the Park's cultural significance.</i>
		<i>The Park is an inappropriate venue for activities and uses which attract high attendance and are disrespectful is of its cultural significance.</i>
		<i>Regulation and reimbursements for damages and privileges for special uses are insufficient to recoup the maintenance and management costs incurred</i>
<i>Insufficient provision of amenities and services for park visitors</i>		
5	Values	Essential role of the Park as a symbol of nature in the city.
	Issues	<i>The impact of modern, high-rise city development conflicts and detracts from the appreciation of the park's natural environment</i> <i>Buildings, monuments and hard surfaces which convey the experience of the city or detract from the natural experience are inappropriate to the Park except where they perform a functional role.</i>

HBO + EMTB

Architecture | Interior Design | Urban & Landscape Design | **Heritage Conservation** | Facility Management | Project Coordination | Consulting

Hyde Park
Heritage Review

6	Values	The Park's context and site conditions are major influences on the health and condition of its vegetation.
	Issues	<p><i>Reduction in sunlight through overshadowing has had a detrimental effect on the growth habits of all vegetation, including the scarce areas of open space.</i></p> <p><i>Previous selection and placement of vegetation has not accounted for the prolonged effects of site conditions and local pathogens</i></p>
7	Values	<i>Unique soil characteristics created by the city underground railway and the impact of the railway itself are reflected in the condition of the Park's resources.</i>
	Issues	The health and longevity of all plant material has been affected by the soil characteristics and exacerbated by high usage and overshadowing
		<i>Prolonged pressures from the city underground railways have created costly damage to paving surfaces, walls and other constructed elements.</i>
		<i>Stormwater and drainage systems are inadequate and inappropriate to the characteristics and pressures created by these site conditions.</i>
8	Values	Management and maintenance operations are essential to the conservation of the park.
	Issues	<i>Defacement of significant elements and vandalism of amenities occur regularly.</i>
		<i>Inappropriate cleansing methods and systems and an inadequate staff roster has resulted in costly repairs and low overall standard of cleanliness.</i>
		<i>Accumulation of rubbish in concealed areas and those with poor access heritage</i>
		<i>Insufficient or deferment of funding has resulted in a slow deterioration of the park and in appearance of neglect, particularly evident in Hyde Park South.</i>
<i>Maintenance programmes and regular monitoring of resources are not adequate for the management of the park.</i>		
9	Values	Actual and perceived sense of security, safety and illumination of significant elements
	Issues	<i>Existing lighting scheme is obsolete and neither enhances park features or adequately illuminates the park for security</i>
		<i>Large areas of shrub vegetation obstruct a clear view over the park, particularly at junctions and entries.</i>
		<i>Inadequate safety and security measures exacerbates obsolete lighting scheme.</i>

The Draft Hyde Park Plan of Management and Master Plan provided some important guidelines particularly for the landscape, which appear to have been adopted. However, many of the guidelines that relate to the heritage significance of the park and its individual items have not been followed through, although maintenance of the most prominent items has been carried out. In particular, apart from reinforcing the primary axes, many of the principles enunciated to reflect a more detailed layout of the 1927 Amended Assessors Report on Norman Weekes design of Hyde Park have not been adopted.

The competition brief was based on a number of general principles which were intended to govern the layout and planning of the City Parks.

Traffic routes and vistas
Architectural or other formal treatment
Planting to give shade
Quietude

060601/280177/HYDE PARK/report/o-design/analysis/060707 HERITAGE REVIEW.doc © HBO+EMTB 2006	Date: 130706	Rev 05	FINAL RMC	15
--	-----------------	-----------	--------------	----

HBO + EMTB

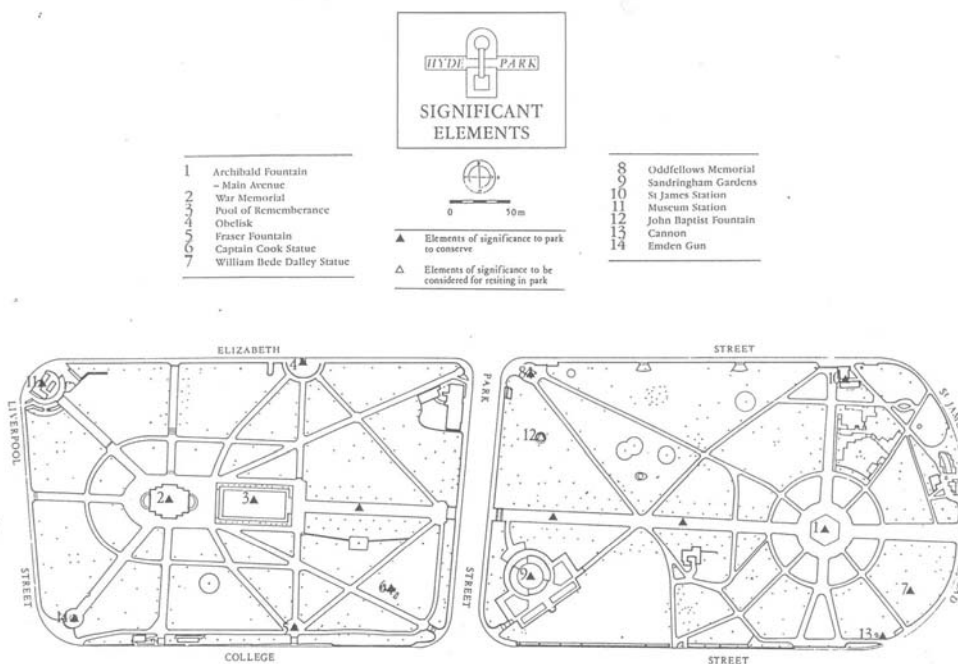
Architecture | Interior Design | Urban & Landscape Design | **Heritage Conservation** | Facility Management | Project Coordination | Consulting

Hyde Park
Heritage Review

The draft plan identifies fourteen items within the Park that are considered either of significance or need to be considered for resiting in the Park, as listed below.

IDENTIFIED ITEMS OF SIGNIFICANCE WITHIN THE DRAFT HYDE PARK PLAN OR MANAGEMENT

- | | | | |
|---|----------------------------|----|-----------------------|
| 1 | Archibald Fountain | 8 | Oddfellows Memorial |
| 2 | Anzac Memorial | 9 | Sandringham Gardens |
| 3 | Pool of Remembrance | 10 | St James Station |
| 4 | Obelisk | 11 | Museum Station |
| 5 | Fraser Fountain | 12 | John Baptist Fountain |
| 6 | Captain Cook Statue | 13 | Cannon |
| 7 | William Bede Dalley Statue | 14 | Emden Gun |



The plan has identified omitted a number of significant cultural items, including St James and Museum Station buildings, which contribute to the significance of the Park, while it assumed retention of John Baptist fountain, which this heritage study assesses as one of the less significant items.

Hyde Park
Heritage Review

8.0 REVIEW OF THE CURRENT STATUS AND RELEVANCE OF THE SYDNEY OPEN AIR MUSEUM HYDE PARK NORTH CONSERVATION REPORTS 1994, PREPARED BY INTERNATIONAL CONSERVATION SERVICES.

The Open Air Museum Hyde Park North Conservation Reports, 1994 prepared by International Conservation Services, provides a comprehensive condition assessment of nine (9) monuments within Hyde Park North, as listed below. The report also prioritised management recommendations.

HYDE PARK NORTH MONUMENTS

(ASSESSED BY INTERNATIONAL SERVICES 1994)

- | | |
|---|---------------------------------------|
| 1 | Busby's Bore Fountain |
| 2 | F.J. Walker Fountain |
| 3 | Sandringham Garden Fountain |
| 4 | Oddfellows Memorial drinking Fountain |
| 5 | Baptist Fountain |
| 6 | Sundial |
| 7 | Sandringham Gardens |
| 8 | Fort Macquarie Cannon |
| 9 | William Bede Dalley |

As part of the heritage review study a survey of all the monuments within this report has been carried out. Over the ten years some deterioration has occurred, although it appears the items that were actually addressed as a high priority, have only deteriorated very little over the years. Due to the detailed technical nature of International Conservation Services Report it would be advantageous to adopt the recommended maintenance methodology for the future care of the monuments and other items.

Hyde Park
Heritage Review

9.0 REVIEW OF CURRENT STATUS AND RELEVANCE OF THE HYDE PARK SOUTH CONSERVATION PLAN FOR CULTURALLY SIGNIFICANT ELEMENTS 1990 PREPARED BY McDONALD McPHEE PTY LTD.

The Hyde Park South Conservation Plans for Culturally Significant Elements, 1990, prepared by Mc Donald McPhee Pty Ltd is a comprehensive study of the five identified items within Hyde Park South, as noted below:

- 1 Thornton Obelisk
- 2 The Fraser Fountain
- 3 The Captain Cook Statue
- 4 The Emden Gun
- 5 Perimeter Walls and Steps

The report is divided into two sections: A. Cultural Significance and B. Conservation Policy to establish the Conservation requirements of the identified items. The Cultural Significance section is further divided into two sections: a) Documentary Evidence and b) Physical Evidence that assist in establishing section B Conservation Policies.

All the items identified were assessed as having cultural significance contributing to the broader significance of Hyde Park. Brian McDonald Director of HBO & EMTB Heritage Pty Ltd was in charge of the conservation works program in 1990/1991 and confirms all the documented conservation works were carried out. However during the current survey of these items it appears that over the intervening years there has been noticeable deterioration of The Fraser Fountain and the Perimeter Walls and Steps and the Thornton Obelisk has not been maintained (ferns have reappeared between sphinxes and the lime wash has not been recoated).

Hyde Park
Heritage Review

10.0 RECOMMENDATIONS

10.1 FUTURE HERITAGE MANAGEMENT

HERITAGE STATUS

Hyde Park criteria for evaluation meets the criteria for State significance status and items within it, such as the Anzac Memorial, St James, Museum Station and the Archibald Fountain also meet these criteria, which means they would qualify to be on the State Heritage Register. The significance of all built items in the Park has been assessed finding that several, when individually analysed, would qualify as heritage items in their own right.

It is recommended that items found to be of local significance or higher are worthy of City of Sydney Heritage Listing in the Central Sydney Heritage LEP, 2005. It is also recommended that Council update the City of Sydney Heritage Database – Heritage Inventory Reports, using information in the significance assessments for this study (Park as a whole and individual items).

A further systematic analysis using New South Wales Heritage Office inclusion and exclusion criteria should be made of all built items which this study finds to be intrusive or of little or no significance to validate recommendations of this study about their removal from or relocation from the Park.

10.2 LOCATION OF MONUMENTS AND ITEMS WITHIN HYDE PARK

There is a number of monuments and items located within Hyde Park, sited from as early as 1857 (Thornton Obelisk) to most recently 1986. A number of these items are of exceptional significance either donated by individuals or erected by government bodies, (e.g. Anzac Memorial, Pool of Remembrance, Archibald Fountain and St. James and Museum Station Buildings).

Others are of a civic nature consistent with the broader role and significance of Hyde Park and contribute in a positive way.

It is important that all the monuments and items and their locations contribute to the significance of the Park.

The assessments of this study show some of these items do not have a direct association with the historic role and meaning of the Park and to varying degrees are out of place, affecting the Park's significance. Particular items in this category are: John Baptist Fountain, F. J. Walker Memorial, and Busby's Bore Fountain.

The following table assign the monuments and items into three categories described below.

060601/280177/HYDE PARK/report/o-design/analysis/060707 HERITAGE REVIEW.doc © HBO+EMTB 2006	Date: 130706	Rev 05	FINAL RMC	19
--	-----------------	-----------	--------------	----

HBO + EMTB

Architecture | Interior Design | Urban & Landscape Design | **Heritage Conservation** | Facility Management | Project Coordination | Consulting

Hyde Park
Heritage Review

Items directly associated with the History of the Park or of historic or symbolic values compatible with the role and meaning of the Park.

Archibald Fountain

Anzac Memorial
Pool of Remembrance
Perimeter Walls and Steps
William Bede Dalley Statue
Oddfellows Memorial
Captain Cook Statue
Fraser Memorial
Fort Macquarie Cannon
Emden Gun
Thornton Obelisk
Bus Shelter
Sun dial
Toilets (underground)
Busby's Bore

Civic Items located within the Park

Sandringham Gardens and Memorial Gates
Nagoya Gardens
Chess Board

Items with little association with primary significance of the Park

F.J Walker Memorial

John Baptist Fountain
Busby's Bore Fountain

Many of the items and monuments within Hyde Park are located in appropriate locations enhancing Hyde Park and contributing to its significance. Items and monuments that do not contribute to the significance of the Park should be removed and/or relocated to a more appropriate location.

There are three elements within the park that the significance assessments suggest do not add to or enhance the assessed significance of the Park, John Baptist Fountain and J.F. Walker Memorial should be removed from the Park. The Busby's Bore Fountain does little to add to any understanding of Busby's Bore and there is a question as to whether its location is misleading.

John Baptist Fountain and **J.F. Walker** are both items that have been donated to the Park and in their own right, have some significance. However their relationships with the Park contributes little to its significance taking account of its importance as an item of State significance. There has been substantial loss of fabric and functionality of John Baptist Fountain diminishing its integrity.

Busby's Bore Fountain is intended to be an interpretation of the city's first piped water supply, an important element for Sydney's social development and health of its citizens. However the position of the fountain does not relate to the location of the original underground outlet or the location of the overland pipework entering the city, which at this point cannot be conclusively determined. It is recommended that Busby's Bore should be interpreted in a more meaningful manner that relates to its history, functions and, importantly, its actual location.

Hyde Park
Heritage Review

10.3 INTERPRETATION

The Park has been assessed to have cultural significance for the city and the State. The history of the park has been well documented and archived in the City libraries and other sources. However, little if any interpretation has been provided for individuals who use or visit the Park to gain an understanding and appreciation of the Park's historic meaning and exceptional significance for the city.

While carrying out this study it has become obvious that there is considerable scope for interpretation of the Park. To ensure that the cultural significance of the Park and its built items and monuments are recognised properly an interpretation plan should be prepared by specialist in this field. The location of an interpretation venue should be carefully considered to place it strategically where visitors can be introduced to the experience of the Park with the benefit of knowledge of its history, layout and meaning before proceeding further. The interpretation should cater for the general public, which includes visitors, office workers and varying age groups who use the park, and attendees of organised groups.

A number of themes that would aid in the interpretation of the site and its significance have emerged from the assessments of the significance of the Park and its component:

The themes are as follows:

Parks and Gardens	Monuments and Memorials
Defence and sacrifice	Maritime History
Water supply	Cultural Landscape
Nineteenth Century Water supply	Government and Administration
Sewerage systems	Health Services
Transportation, Railways	
Civic Spirit	

Hyde Park
Heritage Review

10.4 CONDITION OF ITEMS AND MONUMENTS

The items and monuments within Hyde Park are elements that have been sculptured or constructed at different periods. Due their varying age their condition at present relates to a combination of factors; such as: the material and quality of the fabric used, location and exposure to weather, interaction with human activity and the effectiveness of maintenance.

The condition of the items and monuments within Hyde Park has been categorised into three groups; **good (intact)**, **fair (requires some work)** and **poor (needs urgent attention)** most of the items and monuments within the Park are in fair condition, requiring some work.

Due to the number of items and monuments requiring work and need to allocate funds over time the work will need to be prioritised. Highest priority should be given to items and monuments that contribute importantly to the significance of Hyde Park and are in poor condition, followed by items in fair condition. Initial recommendations to improve the condition of the items and monuments have been included in the Condition Surveys.

A maintenance schedule/strategy including preventative regime that will ensure the longevity of the significant items within Hyde Park should be prepared. A Maintenance Strategy – Sydney Artefact Conservation Strategy for the Sydney Open Museum was prepared for the City of Sydney by Anne Cummins in February 2000. This report is currently being reviewed and updated, as a result it was not available for review during the preparation of this report.

The maintenance schedule should incorporated advice from persons with recognised experienced in traditional materials and techniques, such as: conservators, stonemasons, sculptors with experience in bronze. The schedule should establish a systematic cyclical maintenance programme for materials according to their durability, and critical functions, as noted below:

- Weekly
- Monthly
- Annually
- Five years

The maintenance schedule should be reviewed and updated regularly (at not more than 5 year intervals) or after substantial change to the fabric and/or use of the site) to ensure the approach taken is cost effective and efficient. An accurate logbook of all maintenance activities should be systematically maintained and kept updated, recording;

- Activity and location
- Date of action
- Details of personnel involved
- Cost
- Any following action

Hyde Park
Heritage Review

10.5 CONSERVATION WORKS

The Condition Survey undertaken for this report identifies the current status of the monuments and items. As a result the extent of conservation work required can be determined and prioritised to determine how funds can be allocated.

A Priority Evaluation Matrix has been developed to order the priority of Conservation Work, taking into account the assessed significance and condition of the monument or item and establishing a rating which is averaged from significance and condition to indicate the priority for work required, with 1 being the most urgent.

Assessed Significance		Condition		Priority of Works	
Exceptional	1	Good	3	Urgent	1
High	2	Fair	2	High	2
Moderate	3	Poor	1	Moderate	3
Low	4			Low	4
Intrusive	5				

PRIORITY EVALUATION MATRIX

Item	Assessed Significance	Condition	Priority conservation work
Archibald Memorial Fountain	1	3	2
Anzac Memorial	1	3	2
Pool of Remembrance	1	2	1.5
Stone perimeter walls	3	1	2
St James Station	1	2	1.5
Museum Station	1	2	1.5
William Bede Dalley	2	3	2.5
Oddfellows Memorial	2	3	2.5
Captain Cook Statue	2	3	2.5
Frazer fountain	2	3	2.5
Fort Macquarie Cannon	2	3	2.5
Emden Gun	2	3	2.5
Thornton Obelisk	2	2	2
Bus Shelter	3	2	2.5
Sundial	4	1	2.5
Former Public Toilets	2	1	1.5**
Busby's Bore Fountain	5	3	4*
Sandringham Gardens & Memorial gates/pergola	3	2	2.5
Nagoya Gardens	4	2	3
Chess Board	4	2	3
F.J. Walker	5	2	3.5*
John Baptist Fountain	5	1	3*
Busby's Bore	1	Not inspected	?

* These items are recommended for removal from Hyde Park and relocation to a more suitable site where conservation works would then be undertaken.

** Refers to above ground elements only

HBO + EMTB

Architecture | Interior Design | Urban & Landscape Design | **Heritage Conservation** | Facility Management | Project Coordination | Consulting

HERITAGE ITEMS WITHIN HYDE PARK									
NO.	IDENTIFIED ITEMS	CURRENT STATUS			ASSESSED SIGNIFICANCE	Recommended Status (HBO+EMTB)	CONDITION	LOCATION	RECOMMENDATION
		LOCAL	STATE	OTHER					
1	Hyde Park	Sydney LEP 2005	N/A	N/A	Exceptional	State	Fair	N/A	Interpretation required
2	Archibald Fountain	N/A	N/A		Exceptional	Local	Good	remain	Interpretation required
3	Anzac Memorial	N/A	N/A	Register of National Estate	Exceptional	State	Good	Remain	No action required.
4	Pool of Remembrance	N/A	N/A	Register of National Estate	Exceptional	State	Fair	Retain	Interpretation required
5	Stone perimeter walls	N/A	N/A		Moderate	State	Poor	remain	Conservation works required
6	St James Station	Sydney LEP 2005	State Heritage Register	(Rail Corporation of NSW), S170	Exceptional	State	Good	Retain	Interpretation required
7	Museum Station	Sydney LEP 2005	State Heritage Register	S170 (Rail Corporation of NSW)	Exceptional	State	Good	Retain	Interpretation required.
8	William Bede Dalley	N/A	N/A		High	State	Good	Remain	Interpretation required
9	Oddfellows Memorial	N/A	N/A		High	Local	Good	Retain	Interpretation required
10	Captain Cook Statue	N/A	N/A		High	Local	Good	remain	Interpretation required
11	Frazer Fountain	N/A	N/A		High	Local	Poor	Remain	Interpretation required
12	Fort Macquarie Cannon	N/A	N/A		High	State	Good	Remain	

HBO + EMTB

Architecture | Interior Design | Urban & Landscape Design | **Heritage Conservation** | Facility Management | Project Coordination | Consulting

13	Emden Gun	N/A			High	State	Good	Retain	
14	Thornton Obelisk (sewer vent)	N/A	State Heritage Register	S170 (Sydney Water) Register of National Estate	High	State	Fair	remain	Interpretation required.
15	Former Tram Shelter (tram waiting shelter)	Sydney LEP 2005	N/A		Moderate	Local	Fair	remain	Interpretation required
16	Sundial	N/A	N/A		Neutral	Local	Poor	Relocate	
17	Former Underground Public Conveniences	N/A	N/A		High	Local	Poor		
18	Busby's Bore Fountain	N/A	N/A		Low	N/A	Fair	relocate	
19	Sandringham Gardens & Memorial gates	N/A	N/A		Moderate	Local	Fair/part Poor/part	Retain	Interpretation required
20	Nagoya Garden	N/A	N/A		Low	Local	Fair	Retain	
21	Chess Board	N/A	N/A		Low	Local	Fair	Retain	
22	F.J. Walker	N/A	N/A		Neutral	N/a	Fair	Remove and relocate to a site of greater relevance	Interpretation at new site.
23	John Baptist Fountain	N/A	N/A		Neutral	N/A	Poor	Remove and relocate to a site of greater relevance.	Interpretation at new site.
24	Busby's Bore	N/A	State Heritage Register	Register of National Estate	Exceptional	State	Not known	Detailed inspection and condition survey required	More appropriate interpretation than existing fountain required at interpretation venue for item. Not recommended to be made visible or for general public access.

REFERENCES

NSW Heritage Office Inventory

Sewer Vent, The Obelisk, (database number 5053881)

Hyde Park (database number 2451066)

Busby's Bore (database number 2450962)

Taylor Square Substation No. 6 & underground Public conveniences (database Number 505361)

City of Sydney Heritage Database

Hyde Park (SHI Number 242609)

The Obelisk (opposite Bathurst Street) (SHI Number 242612)

Archibald Memorial Fountain (SHI Number 242610)

Archibald memorial Fountain (SHI Number 2426005)

Bus Shelter (SHI 2423995)

Museum Station (SHI Number 2424096)

St James Station (SHI Number 2423994)

Frazer Fountain (SHI Number 242615)

ANZAC Memorial (SHI Number 2424611)

Captain Cook (SHI Number 2426002)

Busby's Bore (SHI Number 2424823)

Sandringham Gardens and Fountain (SHI Number 2426010)

Hyde Park Archibald Memorial Fountain (SHI Number 2424610)

Sydney Open Museum History Survey 1994, Louella Mc Cathy, Paul Ashton.

Sydney Open Museum, Hyde Park North Conservation Reports, 1994, Sundial, International Conservation Services Pty Ltd

Sydney Open Museum, Hyde Park North, Conservation Report, 1994, John Baptist Fountain, International Conservation Services Pty Ltd.

Sydney Open Museum, Hyde Park North, Conservation Report, 1994, Busby's Bore, International Conservation Services Pty Ltd.

Sydney Open Museum, Hyde Park North, Conservation Reports, 1994, Sandringham Garden and Monumental Gates, International Conservation Services Pty Ltd.

Sydney Open Museum, Hyde Park North, Conservation Reports, 1994, Fort Macquarie Cannon, International Conservation Services Pty Ltd.

Sydney Open Museum, Hyde Park, Conservation Reports, 1994, William Bede Dalley.

Sydney Open Museum, Hyde Park North, Conservation Reports, 1994, F.J. Walker Memorial Fountain, International Conservation Services Pty Ltd.

Busby's Bore, Heritage Assessment, Proposed Development Control Plan, Otto Cserhalmi + Partners PL.

Sydney Open Museum, Hyde Park North, Conservation Reports, 1994, Archibald Memorial Fountain, International Conservation Services Pty Ltd.
City of Sydney Draft Development Control Plan, Hyde Park Precinct, Council of the City of Sydney & Bechervaise & Associates Pty Ltd, 1990.

Hyde Park South Conservation Plans for Culturally Significance Elements, McDonald McPhee, 1990

Hyde Park Development – Feasibility Study for A Parks Depot for Sydney City Council, Brian McDonald and Associates, 1994

Hyde Park Statement of Significance and
Historical Analysis, Helen Proudfoot, 1987

St James and Museum Stations, Hyde Park,
Archaeological Assessment, Godden
Mackay, January 1995

Hyde Park Plan of Management and
Masterplan Draft, 1989

Sydney Water, the Obelisk, Sydney's first
major sewer vent

ANZAC Memorial Hyde Park,
Conservation Management Plan, Second
Draft, February 2005

World Wide Web:

Men's Lavatories –
[www.cityofsydney.nsw.gov.au/waterexhibit
io/PublicConveniences/men.html](http://www.cityofsydney.nsw.gov.au/waterexhibit
io/PublicConveniences/men.html) accessed
4/05/2006

Women's Lavatories -
[www.cityofsydney.nsw.gov.au/waterexhibit
io/PublicConveniences/Women.html](http://www.cityofsydney.nsw.gov.au/waterexhibit
io/PublicConveniences/Women.html)
accessed 4/05/2006

APPENDIX 1

STATEMENTS OF SIGNIFICANCE

HYDE PARK

2	ARCHIBALD FOUNTAIN
3	ANZAC MEMORIAL
4	POOL OF REMEMBRANCE
5a	PERIMETER WALLS AND STEPS -NORTH
5b	PERIMETER WALLS AND STEPS - SOUTH
6	St JAMES STATION
7	MUSEUM STATION
8	WILLIAM BEDE DALLEY
9	ODDFELLOWS MEMORIAL
10	CAPTAIN COOK STATUE
11	FRAZER FOUNTAIN
12	FORT MACQUARIE CANNON
13	EMDEN GUN
14	THORTON OBELISK
15	FORMER TRAM SHELTER
16	SUNDIAL
17	FORMER UNDERGROUND PUBLIC CONVENIENCES
18	BUSBY'S BORE FOUNTAIN
19	SANDRINGHAM GARDENS AND MEMORIAL FOUNTAIN
20	NAGOYA GARDENS
21	CHESS BOARD
22	F. J . WALKER
23	JOHN BAPTIST FOUNTAIN
24	BUSBY'S BORE

APPENDIX 2

CONDITION SURVEY

