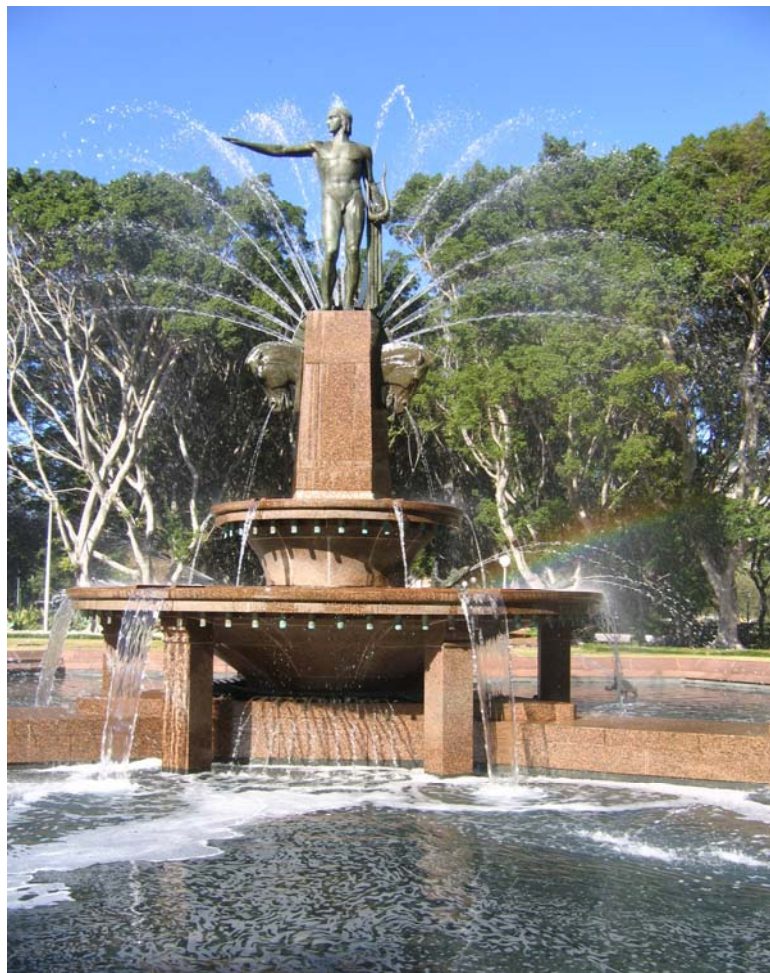


**HERITAGE REVIEW STUDY
FOR
HYDE PARK PLAN OF MANAGEMENT**

CONSERVATION POLICIES AND IMPLEMENTATION GUIDELINES

JULY 2006



HBO + EMTB

Architecture | Interior Design | Urban & Landscape Design | **Heritage Conservation** | Facility Management | Project Coordination | Consulting

Hyde Park Heritage Review
Conservation Policies and Guidelines

CONTENTS

ITEM	CONTEXT	PAGE
1.0	INTRODUCTION	1
2.0	STATEMENT OF CONSERVATION POLICY	3
2.1	PREAMBLE	3
2.2	CONSERVATION PHILOSOPHY AND EXPERTISE	3
2.3	USE AND MANAGEMENT	5
2.4	LANDSCAPE AND LAYOUT	9
2.5	FABRIC OF MONUMENTS AND BUILT ITEMS	10
2.6	NEW WORKS/ALTERATIONS AND ADDITIONS	12
3.0	POLICY IMPLEMENTATION AND GUIDELINES	14
3.1	PREAMBLE	14
3.2	STATUTORY MEASURES	14
3.3	CONSERVATION STRATEGIES AND IMPLEMENTATION	14
3.4	NEW WORKS/ALTERATIONS AND ADDITIONS	15
3.5	ARCHAEOLOGICAL RESOURCES	16
3.6	INTERPRETATION	16
3.7	SIGNS AND ADVERTISING	17

ATTACHMENTS

1. 1927 AMENDED ASSESSOR'S REPORT
2. LOCATION PLAN – MONUMENTS AND BUILT ITEMS
3. EVENTS MANAGEMENT PLANS 11.5 & 11.6
FROM PLAN OF MANAGEMENT

1.0 INTRODUCTION

This report forms part of the Heritage Review Study for the Hyde Park Plan of Management and Master Plan and should be read in conjunction with the Plan of Management and Master Plan to provide a policy framework more specifically aimed to protect, preserve and enhance the Park's heritage values.

The initial brief for the Heritage Review Study as part of the Hyde Park Plan of Management and Master Plan required the following tasks to be undertaken:

- 1.0 Brief history of Hyde Park.
- 2.0 Assess the significance of the Park and its components.
- 3.0 Provide succinct statements of significance that summarise the heritage value of each item.
- 4.0 Provide updated assessment of each item's condition with broad recommendations for conservation/restoration and prioritising of such works.
- 5.0 Review the current status and relevance of the Hyde Park – Sydney – Statement of Significance and Historical Analysis 1987, prepared by Helen Proudfoot.
- 6.0 Review Draft Hyde Park Plan of Management and Masterplan 1989 in terms of heritage aspects.
- 7.0 Review the current status and relevance of the Sydney Open Air Museum Hyde Park North Conservation Reports 1994, prepared by International Conservation Services.
- 8.0 Review current status and relevance of the Hyde Park South Conservation Plan for Culturally Significance Elements 1990 prepared by McDonald McPhee Pty Ltd.

During the course of the study it was apparent that, although the inventory sheets establishing the significance of each of the monuments and built items and each of the sheets describing the condition of these items provided information on an individual level, there was no requirement for the study to produce a comprehensive policy framework for the care, management and interpretation of the heritage values of Hyde Park as a whole and, which would address the monuments and built items collectively.

Consequently, Sydney City Council extended the commission of HBO+EMTB Heritage Pty Ltd to prepare a report setting out conservation policies and implementation guidelines for management of the heritage significance of Hyde Park and the monuments and built items contained within it.

The conservation policy framework is drawn from the information contained in the Heritage Review Study, which assesses the heritage significance of Hyde Park as a whole and heritage significance and physical condition of each monument and built item within the Park.

280177/HYDE PARK POM/O-Design/Site Analysis/Report/060706 Conservation & guidelines.doc © HBO+EMTB 2006	Date: 14/07/06	FINAL C	BMcD	2
--	-------------------	------------	------	---

Hyde Park Heritage Review Conservation Policies and Guidelines

This study was not required to make an assessment of the heritage values of plantings and landscape features within the Park. However, there is sufficient information within the Plan of Management and Master Plan prepared by Clouston Associates on which to base policies and implementation guidelines to respond to the heritage issues addressing the formal layout of the Park, and the general structure and character of its landscape.

The conservation policy statement follows the general format for conservation policies in a Conservation Management Plan. The policies can be seen as statements of “what should be done”, and as setting down general principles to be followed.

The implementation guidelines are in the nature of “what to do” providing more detailed practical information to assist compliance with, and implementation of, key policies. Because some of the policies are self evident, particularly those dealing with philosophy and expertise, only those where future action is required are augmented by the implementation guidelines.

2.0 STATEMENT OF CONSERVATION POLICY

2.1 PREAMBLE

For ease of reference, conservation policies have been grouped under six broad headings:

- CONSERVATION PHILOSOPHY AND EXPERTISE
- USE AND MANAGEMENT
- LANDSCAPE AND LAYOUT
- FABRIC OF MONUMENTS AND BUILT ITEMS
- PHYSICAL INTERVENTION
- ARCHAEOLOGICAL RESOURCES

All Conservation Policies are derived from the statements of significance for Hyde Park and the statements of significance for individual components appended to the Heritage Review Study Report, June 2006. The recommended policies for the Park are numbered and set out in *italics*. They are generally supported by an explanation containing information on the background to the policy. The policies should be read in conjunction with the associated text.

2.2 CONSERVATION PHILOSOPHY AND EXPERTISE

2.2.1 CONSERVATION PHILOSOPHIES

Policy 1

The future conservation and management of Hyde Park, Sydney, should be in accordance with the principles of the Australia ICOMOS Burra Charter for Places of Cultural Significance (Burra Charter) revised 1999.

The Burra Charter provides guidance for the conservation and management of places of cultural significance and is based on the knowledge and experience of Australia ICOMOS members (International Council on Monuments and Sites). The Burra Charter is used as one of the principal guides acknowledged by the NSW Heritage Office and local government authorities to assist with the conservation of items of heritage significance.

Policy 2

The Heritage Review of Hyde Park, Sydney and these Conservation Policies and Guidelines, shall be adopted as the main guide to future planning, management and work for this site, in relation to protection, preservation and enhancement of the heritage significance of the fabric of monuments and built items and landscape components.

Once the Heritage Review and Plan of Management for Hyde Park, Sydney, has been endorsed by both Council as consent authority and Trustee Managers on behalf of the owners, the Department of Lands, it will provide direction in the future management of the property, and

Hyde Park Heritage Review Conservation Policies and Guidelines

the significant building fabric within the Park. The Park contains, or is bordered by significant items in the ownership and/or care of other authorities, whose endorsement should be sought with regard to their areas of responsibility. These items are: St James and Museum Stations (Rail Corporation of NSW); the former tram shelter (Roads & Traffic Authority) and the Anzac Memorial (Anzac Memorial Trust).

Policy 3

All work on monuments and built items shall be undertaken on the basis of known evidence. Conjecture, guesswork or inaccurate replication is unacceptable (Burra Charter Article 3.2¹).

Policy 4

The treatment of existing components and fabric is to be in accordance with their assessed significance, generally as set out in the Statement of Significances.

Policy 5

All future planning and development of the Park shall be in accordance with the general principles set down in the 1927 Amended Assessor's Report for the Hyde Park Design Competition, (attached at Appendix 1).

It is recommended that future conservation and management of the Park should be carried out according to accepted good conservation practice. These policies should be reviewed at periodic intervals. Assessments of significance and consequent policy decisions may need to be modified if new information comes to light.

2.2.2 HERITAGE MANAGEMENT EXPERTISE

Policy 6

Heritage management expertise should be enlisted to guide any future work proposal (other than minor works or routine maintenance) affecting:

- *The Park as a whole;*
- *Monuments and built items;*
- *The general planning and layout of the site;*
- *Landscape character of the site;*
- *Installation of or alteration to engineering services;*

This requirement applies most specifically to any project which seeks to add to or modify the principles of the Plan of Management for the Park or deviate from the recommendations of the 1927 Amended Assessors Report.

¹ Burra Charter, 1997, p3 "Article 3.2 changes to a Place should not distort the physical or other evidence it provides, nor be based on conjecture."

Policy 7

A suitably qualified heritage consultant should be engaged as part of the project team for proposed work requiring consent and be involved from project definition and through the construction phase to ensure the recommendations of the Heritage Review and the Plan of Management are followed if any physical intervention may be necessary.

Experienced consultants in heritage conservation will assist to ensure the significance of the landscape layout and character and of monuments and built items is not adversely affected, providing valuable skills and knowledge to ensure traditional techniques and materials are employed where appropriately and modern techniques where necessary, for their conservation.

2.3 USE AND MANAGEMENT

2.3.1 USE OF THE HERITAGE REVIEW AND CONSERVATION POLICIES AND IMPLEMENTATION GUIDELINES

Policy 8

Copies of the Heritage Review and Conservation Policy AND Implementation Guidelines shall be endorsed by Sydney City Council and retained on the premises of the personnel charged with the primary responsibility for care of Hyde Park and at Council's head office for reference purposes.

It is imperative that the Heritage Review and Conservation Policy be endorsed by those responsible for the care of Hyde Park and its constituent elements and promulgated to key personnel to ensure that there is an understanding of the Park's cultural significance and of the elements that contribute to it.

Policy 9

Copies of the Heritage Review, Conservation Policies, together with the Plan of Management shall be lodged with the authorities with planning consent powers over Hyde Park or items within the Park, - i.e. City of Sydney Council and NSW Heritage office, as reference items.

The Heritage Review provides comprehensive documentation of each monument and built item located within the Park. The lodgement of the Heritage Review with the planning consent authorities should aid in the understanding of Hyde Park and its cultural significance within the local area and its wider significance as Australia's oldest designated Public Park. The lodgement of the Heritage Review and Conservation Policies at one of Council's public reference points will also act as an archival deposit.

Policy 10

The Heritage Review and Conservation Policies should be reviewed every 5 years and shall take into consideration any new information or data as it becomes available. This review shall be made by qualified and experienced heritage and landscape consultants.

The Heritage Review and Conservation Policies should be reviewed to ensure that necessary actions for the conservation of elements of significance follow and they are being adequately cared for. The review should include an update of historical information, identification of any

physical changes to layout or landscape and changes to the physical fabric which may alter the cultural significance of the place.

Policy 11

Proposed works to the layout, landscaping, monuments or built items requiring consent for Hyde Park, Sydney, should be accompanied by a Statement of Heritage Impact prepared by a qualified heritage consultant and submitted to the relevant consent authorities.

Statements of Heritage Impact are prepared to assess the impact of the proposed work on the assessed cultural significance. A statement should be prepared for each application as required by the consent authority.

The body of a Statement of Heritage Impact may be drawn from previous documentation, such as the Heritage Review and its source documents, which should be used to establish the significance of the affected item or place and assess performance of proposed works in the light of these policies and implementation guidelines, to influence decision making on future use and development.

For works identified as minor works or maintenance the Council (and the NSW Heritage Office with regard to St James and Museum Stations) must be contacted so the nature of the proposal can be discussed more fully, before the proposal may be considered exempt from consent.

2.3.2 COMPATIBLE USES/CURTILAGES

Policy 12

Future uses should be compatible with the historic significance of Hyde Park and respect the curtilages of the monuments and major vistas, in particular: the curtilages of the Archibald Memorial Fountain, and the east west axis from Market Street to St Mary's Cathedral; the main north south axis and avenue and the Anzac Memorial.

These zones should be maintained for public access only. Items or structures associated with events are prohibited.

Section 11 PW31 of the Plan of Management addresses this issue by reference to the heritage curtilages established by the Heritage Review and illustrated in Figures 11.5 and 11.6, as exclusion zones for events management. (Attachment 3).

2.3.3 SITE MANAGEMENT

Policy 13

The management unit and other personnel involved in management of Hyde Park should be informed about the background information, Statement of Significance and policies contained in the Heritage Review and Plan of Management.

Hyde Park Heritage Review Conservation Policies and Guidelines

To ensure effective custodianship of the heritage significance of Hyde Park, all those responsible for the decision making and implementation of management decisions should be familiar with, and have access to, the Heritage Review and Plan of Management, including:

The property management unit;

The on site park management;

The person(s) responsible for maintenance and building services;

It is envisaged that the managers of the place will ensure that the personnel responsible for its maintenance are familiar with the Heritage Review and Plan of Management and their requirements. Where in-house expertise is not available or is lacking in respect of conservation skills, such as traditional techniques and materials, external consultants or selected tradespeople should be employed/or consulted.

2.3.4 FUTURE RESPONSIBILITIES

Policy 14

The property management framework should incorporate a heritage management component requiring the Council to take into account the Heritage Review and Plan of Management in future decision making.

Leaseholders within the Park must be made aware of their obligations and the relevant policies and guidelines should be incorporated into lease conditions.

The Heritage Review and Plan of Management can provide the Council and users of the Park with a clear understanding of the site requirements and obligations with regard to its heritage significance. It would be advantageous that the Heritage Review and Plan of Management be provided to new users as part of any new leases as the policies and implementation guidelines would clearly define parameters for the site and its future use.

2.3.5 INTERPRETATION

Policy 15

An interpretation plan is required to inform users of the Park, visitors to Sydney, school groups and others about the history and significance of the site, its monuments and built items. Interpretation should be strategically located in a purpose made venue providing a comprehensive account of the park's origins, evolution, uses, significance, values and history.

An interpretive display clearly portraying the cultural significance of the Park should be placed in a prominent public location to inform the users of the Park. Concentration of the interpretive material at one place will provide a more meaningful experience for visitors and enable minimisation of individual signs, plaques throughout the Park.

Australia's oldest designated public Park has a long history, encompassing a rich tapestry of intertwined themes. Our society places value on its heritage because of what we can learn from it. Conserving the form and fabric is only part of the task, if the educational and experiential benefits of conservation do not follow.

2.3.6 MAINTENANCE

Policy 16

A preventative maintenance schedule should be prepared for the Park, its monuments and built elements, setting out the scope and intervals of inspection and identifying requirements for special expertise in both current and traditional building technologies. A systematic record of the location, scope, time and personnel involved is to be kept for all maintenance undertaken at the Park.

The maintenance policy recognises that maintenance is the single most important process for long term protection and retention of the significant heritage fabric of any place and to ensure the continued use of the site is conducted in an orderly and economic manner. Ongoing

280177/HYDE PARK POM/O-Design/Site Analysis/Report/060706 Conservation & guidelines.doc © HBO+EMTB 2006	Date: 14/07/06	FINAL C	BMcD	9
--	-------------------	------------	------	---

maintenance of the Park should be based on periodic inspections and allow for prompt follow up maintenance and repair where required in accordance with the Burra Charter - Articles 2 and 16.

Routine inspections and preventative maintenance are strongly recommended, rather than infrequent maintenance which invariably results in the need for major restoration or even reconstruction works. A comprehensive log of all maintenance activities, including both inspections and works undertaken, is an essential conservation management tool.

Policy 17

Only persons who are qualified and/or experienced in treating the relevant building materials of the items of significance shall be employed on maintenance and conservation work and supervision should be consistent.

It is important that staff members responsible for the periodic maintenance programme for the Park have been properly informed about heritage processes and practice. On relevant occasions the skills of conservation consultants and tradespeople with experience in traditional techniques and materials may be required, as standard tradespeople will not always have an understanding of the value of the place and its fabric and should be instructed and supervised accordingly. A list of recognised specialist tradespersons can be found by contacting the NSW Heritage Office.

Policy 18

Conservation works shall be prioritised according to needs. Unstable material or defects, which if not addressed will cause further deterioration of the fabric, or which pose a safety risk, shall be addressed first.

The first priorities in conserving significant heritage fabric or planting material are to ensure public safety and to arrest further decoration, decay or disease before further damage is caused. Works that would address only the appearance or cosmetic improvements, while important to the overall presentation and preservation of aesthetic values, would have lower priority where funds need to be judiciously allocated.

2.3.7 CONTRIBUTIONS OF MONUMENTS AND BUILT ITEMS TO THE SIGNIFICANCE OF HYDE PARK

Policy 19

The importance of the monuments and built items that contribute to the significance of Hyde Park should be recognised by their ongoing protection and preservation.

Items which do not have a direct association with the historic role and meaning of the Park and which are located in such a way that they undermine the formal structure of the Park should be relocated to more appropriate locations outside the Park.

This policy is consistent with those policies that reinforce the importance of maintaining the fundamental principles set by the 1927 Amended Assessor's Report, which cautioned against clutter of flowerbeds occupying space "that could be more beneficially used as grass" and contrary to "the dignified character of a City Park".

280177/HYDE PARK POM/O-Design/Site Analysis/Report/060706 Conservation & guidelines.doc © HBO+EMTB 2006	Date: 14/07/06	FINAL C	BMcD	10
--	-------------------	------------	------	----

Hyde Park Heritage Review
Conservation Policies and Guidelines

This theme is also taken up in the Statement of Significance and Historical Analysis by Helen Proudfoot, December 1987 referring to “a number of incidental additions, more or less in the now rather outdated ‘gardenesque a tradition’. This tendency to use the Park for miscellaneous activities as well as for miscellaneous minor memorials has weakened its basic design qualities. These are related to the strong central axis walk and the two major monuments and are essentially formal”.

The Heritage Review identifies: those items that are directly associated with the history of the Park or which have symbolic values compatible with the role and meaning of the Park; civic items located within the Park; and items with little association with the primary significance of the Park. In this latter category are: the F.J. Walker Memorial; John Baptist Fountain, (notwithstanding its arrival in the park in 1888) and the Busby’s Bore Fountain.

HERITAGE STATUS**Policy 20**

Hyde Park’s exceptional significance as the oldest designated public park in Australia warrants recognition of its importance to the City of Sydney and the State of NSW by inclusion in the State Heritage Register. To facilitate the orderly care and management of the Park it should be subject to exemptions from Heritage Council approvals under Section 57 (2) of the NSW Heritage Act, 1977 (as amended) including: the standard exemptions and site specific exemptions based on the conservation policies and implementation guidelines.

The statement of significance incorporates an assessment that clearly establishes a level of state significance in relation to the accepted criteria. Furthermore the Park provides the setting for items already recognised for their significance to the State: St James and Museum Stations and Busby’s Bore and other items that, when assessed against the criteria developed by the NSW Heritage Council, have a level of state significance; ie: The Anzac Memorial, Pool of Remembrance, Archibald Fountain and the formal walk/vista between them.

2.4 LANDSCAPE AND LAYOUT**2.4.1 1927 AMENDED ASSESSOR’S REPORT****Policy 21**

The 1927 Amended Assessors’ Report shall be adopted as setting the guiding principles for future decisions about the layout, structure and character of Hyde Park.

Ensure that the planting principles stated in the 1927 Amended Assessors’ Report are applied to maintain continuity of avenue and garden bed plantings accentuating the formal layout of Hyde Park in line with the original design intent.

Hyde Park Heritage Review
Conservation Policies and Guidelines**Policy 22**

Maintain the dominance of Australian species in the landscape character of Hyde Park with a selective and discrete use of shrubs and flowers.

The changes made to Hyde Park as a result of the construction of the city loop underground railway, and the outcome of the 1926 design competition won by Norman Weekes while adopting key elements of the previous form, patterns of use and planting moved towards a more formal Park plan. The general character of the Park dates from this time when the Park was firmly established as a formally landscaped civic space.

2.5 FABRIC OF MONUMENTS AND BUILT ITEMS**2.5.1 CONSERVATION WORKS PROGRAMME****Policy 23**

A comprehensive conservation works programme should be documented and implemented in a systematic manner. The technical aspects of the conservation works should be properly researched to understand the properties of all materials used in the past and the documentation should incorporate drawings, specifications and photographs where they assist in illustrating the nature of the work required.

The condition assessment sheets for the monuments and built items provide a preliminary assessment of the matters that need to be addressed in a comprehensive conservation works schedule. Where possible accurate measured drawings should be used to document conservation works.

NOTE: The conservation works undertaken in 1990/91 were based on measured drawings of:

The Fraser Fountain
The Thornton Obelisk

Detailed drawings of the new walls installed in Hyde Park south in College Street were also prepared for Sydney City Council at that time.

2.5.2 PRESERVATION**Policy 24**

All monuments and built items with the Park rated as having exceptional, high or moderate significance are to be structurally stabilised (as required) and preserved;

*Archibald Memorial Fountain (2) (E)
Anzac Memorial (3) (E)
Pool of Remembrance (4) (E)
Perimeter walls and steps (5a, 5b) (M)
St James Station (6) (E)
Museum Station (7) (E)
William Bede Dalley statue (8) (H)
Oddfellows Memorial (9) (H)
Captain Cook statue (10) (H)
Frazer Fountain (11) (H)
Fort Macquarie cannon (12) (H)
Emden Gun (13) (H)
Thornton Obelisk (14) (H)
Former Tram Shelter (15) (M)
Former Public toilets (17) (H)
Sandringham Gardens and Memorial Fountain (19) (M)
Busby's Bore (24) (E)*

Works noted as conservation works in the condition assessment sheets for the Heritage Review study, should receive priority action to arrest further deterioration of fabric. In particular where the stabilisation and preservation of significant original fabric is required.

Numbers in brackets identify the order of the data sheets detailing the significance and condition of each item and location in the Plan included in the Heritage Review (copy at Attachment 2). The level of significance of each item is indicated in brackets thus: Exceptional (E), High (H), Medium (M).

It is acknowledged that some items outside the management of Sydney City Council will be the responsibility of other authorities, which will have their own management systems and procedures; and Conservation Management Plans specific to these items may apply.

2.5.2 RESTORATION/RECONSTRUCTION**Policy 25**

Restore/reconstruct original fabric based on accurate documentary and/or physical evidence in accordance with Articles 19 and 20 of the Australia ICOMOS Burra Charter.

Reconstructing elements to a known earlier state is acceptable if it is required for conservation; it enhances the significance of the element, does not distort existing evidence and allows interpretation of the change to be read. Reconstruction is not necessarily part of the conservation process, and repair and preservation are to have priority. Any restoration or

reconstruction work must be based on properly researched evidence, not conjecture. More flexibility may apply to items of low significance.

2.5.3 ADAPTIVE RE-USE

Policy 26

The buildings at Hyde Park: Museum Station, St James Station, the former Tramways shelter and former public toilets may be adapted to serve compatible uses provided the adaptation fits the item, not that the item is made to fit the use. Monuments, memorials and statues are not suitable for adaptation.

There is limited scope for adaptive reuse of built items in Hyde Park and this policy does not apply to monuments. St James Station and Museum Station have in part been adapted for use as cafes and there may be the prospect of a change of use at some future time. The public conveniences in Hyde Park north have been closed and covered over and the former Tramway Shelter, while it has a small refreshment stall in the rear part, otherwise functions more or less as it was originally intended and is likely to continue to meet a public transport need in the long term.

2.5.4 PHYSICAL INTERVENTION

Policy 27

Any physical intervention into the external envelope fabric and structural elements of the items of exceptional, high or moderate significance should be based on careful study of the significance of these elements. Permanent, physical impacts on components of exceptional or high significance should be avoided.

2.5.5 NEW WORK/ADAPTATION

Policy 28

New works for introduced elements to the significant buildings, walls and steps within the Park should not attempt to recreate stylistic period details of any other past architectural period.

New works should be complementary to, but not compete with, the architectural character and spatial qualities of the retained significant fabric of the significant buildings.

The brass handrails introduced to the steps along College Street in Hyde Park South in 1990 are examples of new works that are contemporary designs yet compatible with the general character of the Park.

Policy 29

New works such as built in furniture, partitions, equipment, engineering services and the like should be designed and constructed to minimise physical impacts on fabric of significance. New works should be capable of easy removal without damage; i.e., they should be reversible.

The principle of reversibility is consistent with the general nature of fit out installations and engineering services which can be subject to technological upgrading or, if they become obsolete, replacement.

2.6 NEW WORKS/ ALTERATIONS AND ADDITIONS

2.6.1 MATERIALS AND DETAILS FOR NEW WORK

Policy 30

New materials, textures details and colours should complement, but not compete with the existing built items.

2.6.2 JUNCTION OF NEW AND OLD

Policy 31

Careful attention must be given to the architectural treatment of the junction between the existing significant built items and any new structure abutting in terms of articulation, choice of materials, juxtaposition of forms, modelling and waterproofing.

The design challenge should be met by careful study of the early Federation and Inter war period building typologies and the exploration of a range of design solutions to arrive at the best solution.

2.6.3 ARCHAEOLOGICAL RESOURCES

Policy 32

The site is subject to the relics provisions of the NSW Heritage Act 1977. An excavation permit may be required for any work, which will result in ground disturbance or uncovering of a potential archaeological resource. Any development proposal involving excavation will need an archaeological assessment to determine whether a permit will be required.

Due to the continued use of the site as a public park extending over 200 years², and despite the extensive disturbance to the ground when the railway was built, there is a probability of archaeological resources below ground level. Excavation work associated with foundations and footings underground services installations, reconstruction of walls, or planting of mature or semi mature trees should be monitored by a suitably qualified archaeologist as required under Section 139 of the NSW Heritage Act 1977, that;

² NSW Heritage Act 1977, Section 4, p4 – Relic

Hyde Park Heritage Review
Conservation Policies and Guidelines

*"A person must not disturb or excavate **any** land knowing or having reasonable cause to suspect that the disturbance or excavation will or is likely to result in a relic being discovered, exposed, moved damaged, or destroyed unless the disturbance or excavation is carried out in accordance with an excavation permit."*

In this regard the site is no different to any other place of previous use or containing fabric over more than 50 years ago. Information with regard to applications and permits can be sourced from the NSW Heritage Office.

3.0 POLICY IMPLEMENTATION AND GUIDELINES

3.1 PREAMBLE

This section deals with the responsibilities of those responsible for the ongoing use, management and maintenance of Hyde Park, with respect to preservation of its heritage values.

3.2 STATUTORY MEASURES

This site is an item of heritage significance and is listed in Schedule of Central Sydney Heritage Local Environment Plan 2005, which affects the current and future management of the item. It is of exceptional significance for the State of NSW as its oldest public park and contains structures listed in the State Heritage Register and others that meet the criteria for listing in the State Heritage Register. Any physical works other than maintenance will require development consent and a Heritage Impact Statement will need to accompany the application.

Any development proposal affecting the items listed in the State Heritage Register also requires an application to the NSW Heritage Council pursuant to Section 60 of the Heritage Act, 1977. Exemptions may apply under Section 57 (2) of the Act for works that would not adversely affect the significance of an item. In those situations proponents of works are still required to write to the Director of the NSW Heritage Office seeking a determination that such works are exempt from the requirement for a Section 60 application. These requirements affect Museum and St James Stations, and Busby's Bore and, if policy No.20 of this document is implemented, the Park as a whole.

The NSW Heritage Office should be consulted to ensure the standard exemptions under section 57 (2) of the NSW Heritage Act apply and a set of site specific exemptions based on relevant policies and guidelines in this document: in particular to exempt activities that are consistent with:

- The endorsed preventative maintenance plan.
- The endorsed interpretation plan.
- An approved conservation works program.
- Events and temporary activities in accordance with the Plan of Management.

3.3 CONSERVATION STRATEGIES AND IMPLEMENTATION

Adoption of the implementation recommendations for future conservation management can be assisted by the following procedures.

3.3.1 ICOMOS AUSTRALIA – BURRA CHARTER

All works visually or physically affecting elements of exceptional, high and moderate significance should be undertaken in accordance with the articles and guidelines of The Australia, ICOMOS Charter for Places of Cultural Significance, 1999.

3.3.2 REVIEW

The Heritage Review's Condition Survey and Conservation Policy and Implementation Guidelines should be reviewed and updated every five years and/or following substantial changes to the site and its use. If the site or part thereof, changes use the Conservation Policy and Implementation Guidelines should be reviewed to take into account the implications of the new uses.

3.4 NEW WORKS / ALTERATIONS AND ADDITIONS

3.4.1 NEW WORKS/SERVICES

New services should be confined as much as possible to areas where the structural fabric and finishes have been previously modified and are not of exceptional, high or moderate significance.

3.4.2 NEW WORK/RECORDING OF CHANGE

As built drawings should be prepared to illustrate all new works carried out, and maintain a record of the physical changes to monuments, buildings and structures.

As built drawings should be kept as hard copy format by the Council and as part of conditions of leasehold.

Hard copies of the drawings should be maintained by the building maintenance team to assist with future maintenance.

If electronic drawing files are available, ensure the file can be updated through compatible formatting.

A record of this type is essential for the on-going use and management of the Park; regardless of any benefits attached to its use for conservation purposes.

3.4.3 ADDITIONS AND ALTERATIONS TO EXISTING STRUCTURES

To ensure new works do not compete with the character of existing components of exceptional, high and moderate significance, ensure new permanent or temporary structures are clearly distinguished through their materials and details.

3.4.4 MATERIALS AND DETAILS FOR NEW WORK

To ensure new works complement the existing structures an analysis should be made of the design to develop an understanding of proportions, mass, and scale of the building elements. This analysis will assist the design process of any new structure and the development of complementary details and use of materials.

3.4.5 BUILDING MAINTENANCE

To ensure the longevity of the significant monuments and built items a periodic maintenance regime must be maintained. Prepare a maintenance manual for the significant items identified in the Heritage Review, following advice from persons with recognised experience in traditional materials and techniques. The services of conservation specialist contractors and consultants are required for the care and maintenance of the following materials:

- Sandstone, granite and marble.
- Bronze statues and ferrous internal framing
- Hydraulic installations to fountains, and Pool of Remembrance.
- Iron castings and other ferrous components (Emden Gun, Fort Macquarie Cannon.)

Produce a maintenance manual to establish a systematic cyclical maintenance programme for materials according to their durability, and critical functions, as noted below:

- Weekly
- Monthly
- Annually
- Five years

The manual should be reviewed and updated regularly (at least every 12 months/or after substantial change to the fabric and/or use of the site) to ensure the approach taken is cost effective and efficient. An accurate logbook of all maintenance activities should be systematically maintained and kept updated, recording;

- Activity and location
- Date of action
- Details of personnel involved
- Cost
- Any following action

3.5 ARCHAEOLOGICAL RESOURCES

Recording:

An archaeologist accredited with the NSW Heritage Office should be retained to manage and report on archaeological resources encountered during any works disturbing the ground surface in Hyde Park.

If found, intact archaeologically significant evidence contained within the Park, or its immediate vicinity, for example under the footpath or road pavements, may be used to more accurately document and interpret the history of the site than may be achieved using only the existing documentary evidence.

3.5 INTERPRETATION

The exceptional heritage significance and social value of Hyde Park deserves to be interpreted comprehensively to high standards to ensure there is an understanding by the owners, regular users, the general public, visitors and school groups of its meaning and cultural significance.

The evidence contained within this document points to a thematic framework, which identifies a number of areas of interest that would aid in the interpretation of the Park's previous uses and the history of the part of the City where it has long stood.

Thematic Framework:

Some of the themes that could be developed to assist in the interpretation of the Park and its monuments and built items are:

- The public common of the first settlement;
- Macquarie's vision – Hyde Park set aside as a civic space;
- Early uses of the Park – horse racing, cricket, grazing;
- Sydney's second water supply;
- Evolution of the city around the Park: Macquarie Street and College Street;
- Upheaval – the underground railway;
- The 1926 design competition and its implementation;
- Emerging national identity: Memorials and symbols;
- Contemporary uses: events and entertainments;

Interpretation venues:

The Park is actively used by the public and visitors, which requires careful consideration of a location for an interpretation venue that does not detrimentally affect the significance overall or spatial qualities of the important open lawn areas. It must not introduce an intrusive element or clutter existing spaces.

The most effective means of ensuring the public are made aware of the heritage significance of the Park is to provide a comprehensive interpretation display at the most heavily used entry to the Park in an accessible but unobtrusive position. This is likely to be found in the vicinity of St. James Station, near the intersection of Market and Elizabeth Streets.

The interpretation venue should be specially designed for this purpose and the format and content of the interpretive material must be commensurate in quality with the exceptional significance of Hyde Park, i.e.: it must be selected and assembled by a person with appropriate experience in writing interpretive plans and be designed by a suitably skilled and experienced graphic and/or exhibition designer. A centralised interpretation venue will meet the objective of avoiding reliance on a proliferation of signs and plaques throughout the Park.

3.6 SIGNS AND ADVERTISING

Signs are necessary for the vitality and legibility of an area. However, in Hyde Park, any consideration of signs should be subject to the test: "is this sign really necessary". Any required signs should be well designed and/or positioned in appropriate locations to assist in imparting relevant information and directions.

Signs for Hyde Park should be limited to:

- that which is necessary to assist with the interpretation of the site's heritage significance;
- to provide information that can not be placed in the interpretation venue;
- identification of the current use of any buildings and plant;
- to provide directions;
- signs required under the Local Government Act notifying prohibited activities and penalties;
- and where public safety demands some kind of warning or prohibition.

Hyde Park Heritage Review
Conservation Policies and Guidelines**1927 AMENDED ASSESSOR'S REPORT:**Hyde Park Remodelling
Competition

THE 1927 AMENDED ASSESSORS REPORT

That with regard to the Hyde Park Remodelling Competition and the report dated 24th February, 1927 of the Adjudicators thereon as follows—

Report by the Assessors (appointed by Council at a meeting held 11th May, 1926) on the plans submitted in competition for the layout of Hyde Park Sydney.

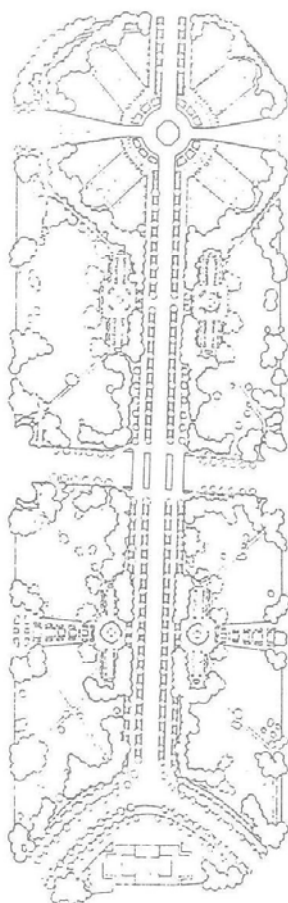
Before dealing with the designs submitted in competition for Hyde Park the Assessors consider it advisable to indicate the general principles which should govern the layout and planting of City Parks. Surrounded as they are by buildings, they naturally become traffic ways connecting the more busy streets in their neighbourhood. One of these traffic ways is usually more important than the others, and this should be emphasized as the main feature of the design. Some of the others will be short cuts to connect the different foci of traffic surrounding the park, and if not provided for in the design will inevitably be made for themselves by pedestrians. Hence they must be properly formed and traffic must be rigidly confined to them.

In a warm climate such as that of Sydney these traffic ways should be shaded by trees, and hence avenues will be the principal features of a City Park. This is so well recognised that in the Continental cities of Europe, where the best City Parks are to be found, avenues and the regular planting of trees for shade are the dominant features. Good instances are the Champs Elysees and the Gardens of the Luxembourg in Paris. The choice of trees must be governed largely by the soil, and the purity or otherwise of the atmosphere. Evergreen trees are quite suitable for a warm climate, but a few deciduous may be introduced if desired. Restriction to a few suitable varieties of either kind is however, essential for unity of effect.

The spaces between the avenues should be grassed and left as open as possible for use in winter or morning and evening in summer, when the sun's rays are not oppressive, by citizens who desire to obtain fresh air, quietude and rest. Shrubberies in a City Park should be absolutely tabooed, as they cannot be supervised, and for the same reason any obstruction that blocks a free view over the park area should be entirely eschewed. The introduction of large and numerous flower beds is also to be deprecated, as they occupy space that could be more beneficially used as grass, are expensive to keep up and are not in harmony with the dignified character of a City Park. Small beds as special features to make a junction or define a route are, however, quite permissible, but they should be used with much restraint. Flowers are like jewels, if used in too great profusion they are vulgarised. Another feature that should be tabooed are so-called specimen trees dotted over a park area. They may have their use in a suburban garden, but are quite out of place in a City Park, as they destroy the unity of the avenue design and look like fussy intruders.

Surrounded by buildings a City Park should harmonise therewith, and hence will be an appropriate setting for monuments, sculpture, fountains and stone-paved and bordered basins of water. These, if carefully planned and of moderate size, will do much to dignify a City Park, and may be supplemented by architectural treatment of any retaining walls and steps, and especially by emphasizing the entrances to the park.

A park laid out on the above lines and with an avoidance of the errors demonstrated by experience would be dignified, useful, a pleasure to the citizens



The proposed plan for the Hyde Park Remodelling Competition, as submitted by the Assessors, dated 11th May, 1926.

Hyde Park Heritage Review Conservation Policies and Guidelines

and an object of admiration to visitors, as they are in the principal Cities of Europe. Hyde Park properly treated, may thus take its place among those of the leading Cities of the world.

The Competition

Fourteen (14) sets of plans were submitted and have received most careful consideration by the Assessors. Several of them show considerable merit and original thought, various solutions are suggested, but none have in our opinion quite met all the necessities of the case.

This was only to be expected and is usual in all competitions, subsequent modification of the selected design being nearly always required.

It is interesting to note that the competitors, in general expression of their views, have with singular unanimity avoided perpetuation of the existing treatment of Hyde Park as exemplified in the area on the western side of the northern section of the Park. Here exist the predominating features of mounds and the dotting of grass areas by useless dwarf trees and shrubs. Mounds, in addition to being undesirable, are unnatural and grotesque. They contravene one of the foremost principles of park layout by artificially destroying vistas. In addition to adding to the expenditure through costly maintenance, provision is thereby made for a harbourage for undesirables.

The general principles governing the design of a City Park have already been enunciated and may be summarised as follows:

1. Traffic routes and vistas
 2. Architectural or other formal treatment
 3. Planting to give shade
 4. Quietude (as far as practicable)
- and the relative importance of each will be determined to a large extent by the conditions surrounding the particular problem.

In Hyde Park the local conditions are these:

1. The Park is comparatively small in area
2. It is divided into two portions by Park Street
3. It carries very considerable pedestrian traffic, principally from the junctions of important streets abutting on the Park.
4. It stands at the head of the one street of Sydney — Macquarie Street that is naturally a fine processional way.

In the opinion of the the Assessors, these conditions require the approved design to embody the following features:

1. A fine avenue in continuation of Macquarie Street. This should normally be for pedestrian traffic only, but be capable of use on occasion as a fine processional way.
2. The carrying of this avenue across Park Street by a well designed bridge, thus uniting the two portions of the Park into the one whole. Preferably, this bridge should be on the level of the avenue, without steps. However it is realised that this cannot be accomplished owing to the relative position of the underground railway to the Eastern Suburbs to the level of Park Street. It is considered that a partial regrading of Park Street is desirable to minimise the number of steps required.
3. Some attempt to "square up" the connection between Macquarie Street and the proposed avenue at Queen's Square whereby a dignified and appropriate architectural character can be imparted to what could, and logically should, be one of the most important centres in the City.
4. A minimum of subdivision in the remaining four portions of the Park, whilst still retaining ample facilities for pedestrian traffic and in particular confining such traffic to the recognised paths.

The design which embodies these requirements more fully than any other is No. 4. This design, however, goes

further in some particular than the Assessors feel warranted in recommending, and although fully appreciating the vision and the masterly handling of the whole problem of the Park and its environs by this competitor (the latter being authorised by the conditions of competition) they recommend that the first premium of 150 pounds be awarded to him on the condition that the design be modified by the elimination of features, which may possibly be deemed worthy of consideration in the future, but at the present time are impracticable. This competitor has virtually committed himself to concurrence in this suggestion, as he states "the substance only of the design is submitted for consideration".

The principal amendments contemplated by the Assessors are, confining the design to the present area of Hyde Park for the time being, the elimination of the proposal to admit trams and vehicular traffic to pass through the Park, and retention of the existing streets surrounding the Park. From this follows logically the elimination of the proposed octagonal traffic centre between St. Mary's Cathedral and Market Street, and the modification of the approach at Queen's Square.

Certain other amendments in details would also be desirable and the Assessors will be pleased to continue their services in an advisory capacity until they are able to report that the plan is in their opinion an entirely satisfactory and practicable solution of the problem to suit present conditions.

The Assessors desire to comment on the very fine and interesting draftsmanship of this design; to some extent, however, this has defeated its own end, as until the design is carefully studied it is difficult to avoid the impression that extraordinarily drastic and expensive alterations are contemplated throughout the Park and its immediate vicinity.

Of the remaining designs some comply more or less with the requirements which the Assessors have deemed essential but in general they are lacking in a grasp of the possibilities of the problem. The competitor responsible for No. 9 appears to have a considerable sense of artistic values and to be familiar with the possibilities of a wide range of trees and shrubs. His design is unimaginative but plain and straightforward. It is marred by the eccentric placing of the focal centres, but the Assessors feel that this competitor has given sufficient evidence that he possesses the kind of knowledge required to carry through the work if the author of No. 4 should be unable to unwilling so to do, and they accordingly recommend that the second premium of 25 pounds be awarded to the author of design No. 9.

One other design calls for special comment, that numbered 6. This is a splendid example of draftsmanship and the design, for some purposes and in some places, would be most admirable. It is regrettable that a competitor so obviously competent technically should have overlooked practically all the fundamental requirements of this particular problem.

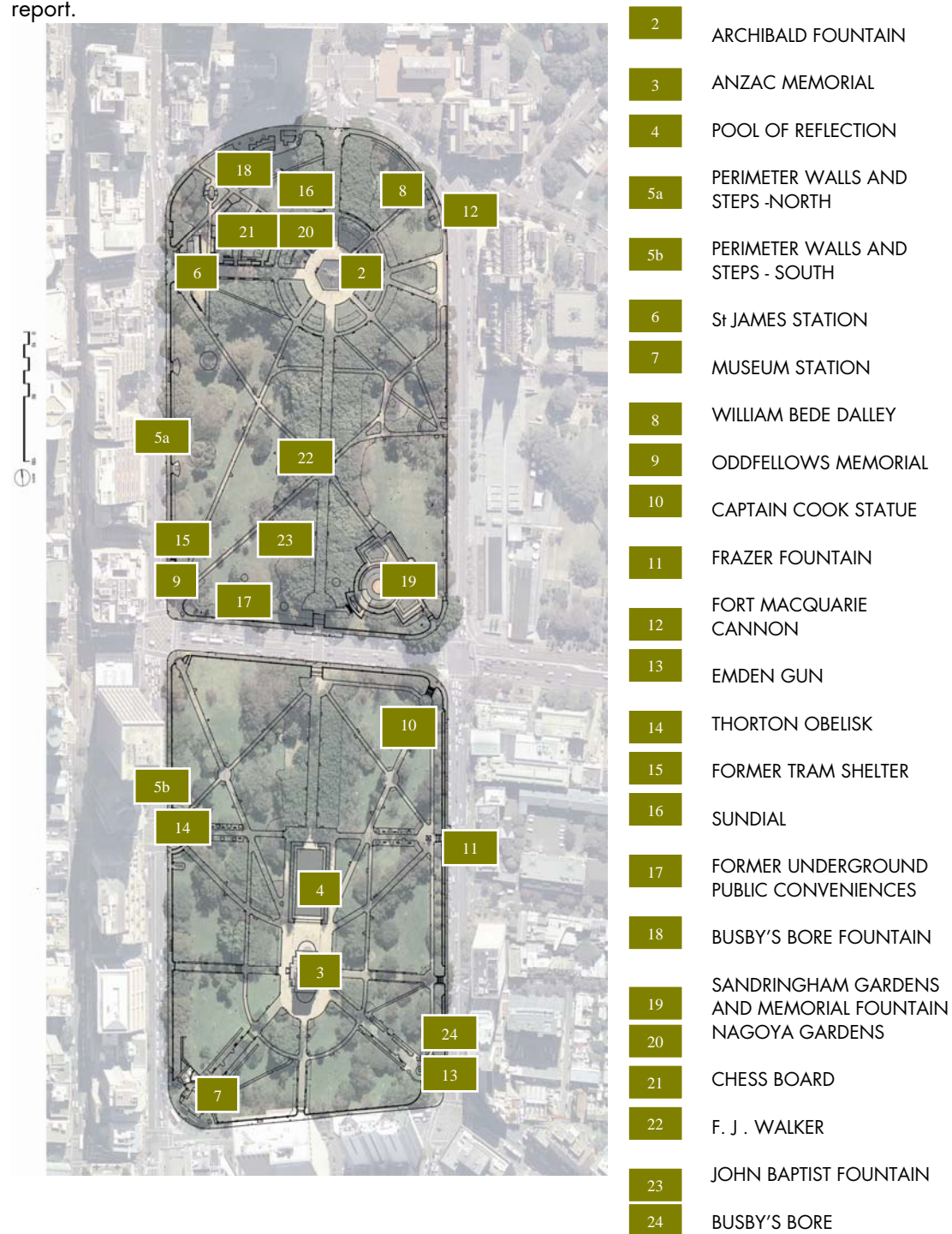
Of the remaining designs many present suggestions of interest and some evidence of very careful and thoughtful study. The Assessors feel that the competition has been of very great value and that the thanks of the Council are due to all competitors whether premiated or not.

Conclusion

The Assessors desire to express their appreciation of the excellent work and attention to detail of the Secretary, Mr. Roy Hendy. The main essential in such a competition is the preservation of the identity of

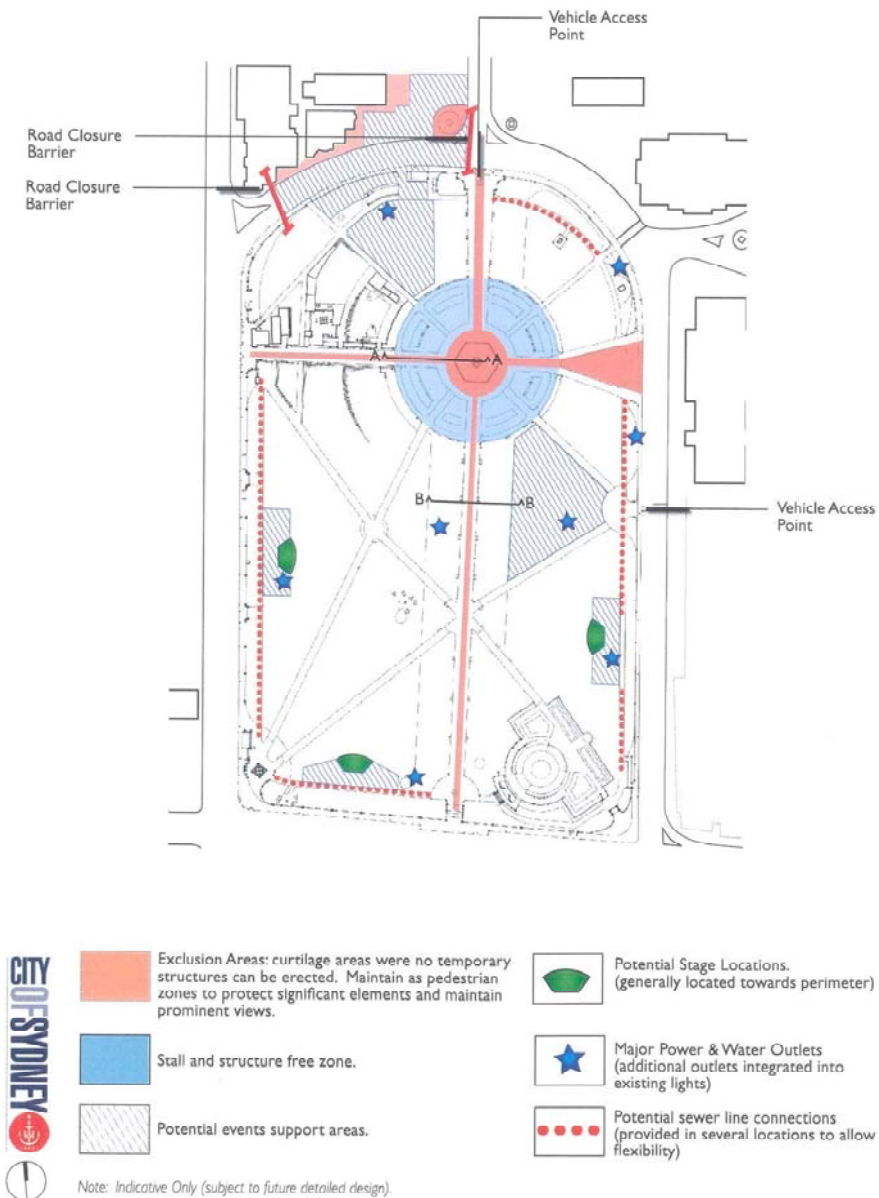
Hyde Park Heritage Review
Conservation Policies and Guidelines**LOCATION PLAN – MONUMENTS AND BUILT ITEMS:**

Hyde Park has a number of components within its boundaries that contribute to the cultural significance of the park. The following index illustrates the location of each of the items that have been assessed identified by a number. The Statement of Significance for each item follows this numbering sequence with a prefix **S**. The Statements of Significance are appended to this report.



EVENTS MANAGEMENT PLAN 11.5:

FIGURE 11.5: EVENT MANAGEMENT, HYDE PARK NORTH



EVENTS MANAGEMENT PLAN 11.6:

FIGURE 11.6: EVENT MANAGEMENT, HYDE PARK SOUTH

