

Draft Hyde Park Plan of Management and Masterplan

Round Two Community Consultation
Report on facilitated exhibition in Hyde Park
and written submissions



Prepared for
The City of Sydney Council
September 2006

the people
for places
and spaces

Trading name for
Warwick Coombes + Penelope Coombes Pty Ltd
ABN 51 003 077 594

studio 66 / 61 marlborough street
surry hills nsw 2010 australia
tel +61 2 9310 3233 fax +61 2 9310 4705
email p4ps@p4ps.com.au
web www.p4ps.com.au

Contents

Introduction	i
Written feedback from exhibition participants	1
Anecdotal comments received by exhibition personnel from visitors who did not complete a written response	7
The written submissions from organizations	11
Submissions about the John Baptist Fountain	35
Summary of individual letters	57

Introduction to the Round Two consultation report

Background to the Round Two Hyde Park consultation

The People for Places and Spaces (PPS) to plan and implement a comprehensive public and stakeholder consultation program to inform the preparation of a new Plan of Management and Masterplan for Hyde Park.

The draft Plan of Management and Masterplan was developed by Clouston Associates for the City.

Round One of the consultation commenced in January 2006 and was completed in June 2006. The Round One outcomes were reported in separate volumes.¹

Exhibition of the draft Plan of Management and Masterplan

The draft Plan of Management and Masterplan were put on public exhibition during the period between 11 August to 7 September, 2006. The exhibition included the following elements:

Static displays

Static displays of the draft Plan of Management and Masterplan were mounted at the City of Sydney's one-stop shops. People who attended the static displays were advised they could make written comment to Council about any aspect of the draft Plan of Management and Masterplan.

Facilitated displays in Hyde Park

The City held three separate facilitated displays of the documents in Hyde Park between 11.00am and 2.00pm on the following days:

Wednesday 16 August, 2006

Sunday 20 August, 2006

Tuesday 29th August, 2006

The facilitated displays were staffed by staff of the City of Sydney Council, Clouston Associates and The People for Places and Spaces. Those attending the facilitated display were requested to complete a response form, which asked the following questions:

- What aspects of the draft Plan of Management and Masterplan do you most like?
- What aspects do you least like?
- Are there any other comments you wish to make?

- ¹Hyde Park Intercept Survey, March 2006
- An Observational User Analysis Study of Hyde Park, April 2006
- Interviews with service and amenity providers, May 2006
- E-mail and telephone survey of stakeholders nominated by Council, June 2006
- Mail-out survey of adjacent property owners, June 2006

Comment on the facilitated displays

The facilitated displays in Hyde Park consisted of a tent (depicted on the front cover) with display panels that contained information about the consultation outcomes, the Tree Management Plan and the draft Plan of Management and Masterplan.

Approximately 50 persons attended each facilitated display. This figure is approximate as the displays were set up in such a way that people could read the panels without choosing to engage with the facilitators, if facilitators were talking with others. Some chose to do this, while others waited to read the panels and discuss the contents with the facilitators.

After reading the panels, most chose not to complete a written feedback form, the vast majority declaring they were “happy” with what they reviewed on the panels.

Although attendance by members of the public at the facilitated displays is described as low, those who did attend were positive in their response to the draft Plan of Management and Masterplan.

A note about the content of this report

Anecdotal feedback from the facilitators at the exhibition reflecting their discussions with participants has been included in the report, as the anecdotal response from participants was so positive. Indeed, satisfaction with the draft Plan of Management and Masterplan, and with the Tree Management Plan was stated directly by many as a reason *not* to complete any written feedback. Therefore, in the absence of abundant written feedback from the exhibition, the anecdotal feedback has been included to ensure that the outcomes of Round Two do reflect the positive nature of the responses of those who attended.

This report contains the following information:

- Analysis of the written feedback from the Round Two facilitated displays
- A report of anecdotal feedback from those who attended the Hyde Park exhibition, provided by those who facilitated the exhibition
- Analysis of the written submissions received by Council in response to the draft Plan of Management and Masterplan.

A summary table of the main findings follows.

This is followed by the outcomes of the facilitated displays (written and anecdotal) plus the written submissions to Council.

The major themes that emerged from particular stakeholders

	Written feedback by participants	Participants comments received by facilitators	Aboriginal Housing Company – Letter	Aids Trust of Australia – Letter	Australian Museum – Letter	Australian Olympic committee – Letter	Edmund Rice Centre – Letter	The Returned and Services League of Australia – Letter	The Trustees of the Anzac Memorial – Letter	The Premier's Department of NSW	John Baptist Fountain Letters (4)	Individual letters (5)
Expressed support for the Plan of Management and Masterplan	✓	✓		✓					✓	✓		✓
Against the removal of the Olympic Memorial Plaque						✓		✓	✓			
Recognition of Aboriginal Heritage in Hyde Park			✓				✓					✓
Inclusion of the Olympic Memorial Plaque in the Plan before Council						✓		✓				

pps Major themes that emerged from particular stakeholders

	Written feedback by participants	Participants comments received by facilitators	Aboriginal Housing Company – letter	Aids Trust of Australia – letter	Australian Museum – letter	Australian Olympic committee – letter	Edmund Rice Centre – letter	The Returned and Services League of Australia – letter	The Trustees of the Anzac Memorial – letter	The Premier's Department of NSW	John Baptist Fountain letters (4)	Individual letters – (5)
Suggested amendments to the Plan of Management									✓			
Support for Dellit's water cascade feature								✓	✓			
The Park should not have too many memorials									✓			✓
Minimise impact of events in the Park				✓						✓		
Maintain long standing events like the Food and Wine event and Australia Day				✓						✓		

	Written feedback by participants	Participants comments received by facilitators	Aboriginal Housing Company – letter	Aids Trust of Australia – letter	Australian Museum – letter	Australian Olympic committee – letter	Edmund Rice Centre – letter	The Returned and Services League of Australia - letter	The Trustees of the Anzac Memorial – letter	The Premier's Department of NSW	John Baptist Fountain letters (4)	Individual letters (5)
Continuing opportunities for consultation					✓					✓		
Improve security after hours									✓	✓		
Restoration of John Baptists Fountain											✓	
Do not relocate the John Baptist Fountain											✓	
Tree management is critical	✓											
Positive response to the Tree Management Plan		✓										
Connect Hyde Park to the Domain	✓											

	Written feedback by participants	Participants comments received by facilitators	Aboriginal Housing Company – letter	Aids Trust of Australia – letter	Australian Museum – letter	Australian Olympic committee – letter	Edmund Rice Centre – letter	The Returned and Services League of Australia - letter	The Trustees of the Anzac Memorial – letter	The Premier's Department of NSW	John Baptist Fountain letters (4)	Individual letters (5)
Support for landscape changes that define the ANZAC Memorial's curtilage									✓			
More public amenities near the memorial									✓			

Written feedback from exhibition participants

What aspects of the draft plans do you support?

Theme	Number of comments
Ambitious plan that will look good	5
Tree management the most critical aspect	3
Thought out with regards to the Park's origins and future uses	2
Single comments	5
Total	15

Discussion of themes

Ambitious plan that will look good – 5 comments

Respondents stated they were happy with the plan and although one stated it is rather ambitious but it should have a great outcome.

Tree management most critical aspect – 3 comments

Respondents considered management of the trees as the most critical part of the Plan of Management. They wanted to ensure the tree management plan considered the visual impact it will have on the Park

Planned with regard to the Park's origins and future uses – 2 comments

The Plan of Management was supported by these respondents because it had been planned with respect to the Park's origins and future uses and would maintain the cultural aspects and formal landscaping currently in the Park.

Single comments

- All obviously long term value to the Park and Sydney
- A safer Park at night
- The plan highlights lots of things about the Park I didn't know about, so the visitor interpretation proposal is good – why not duplicate it in Hyde Park South?
- To see the original plan brought to exhibition
- I support all the draft plans so long as it is done well, good luck!
- History education would be good to be enforced
- I would like to see toilets, bubblers, lots of seats and maintenance of the chess board

What aspects of the draft plans do you not support?

There were virtually no negative comments about the draft Plan of Management and Masterplan.

Single comments

- Elevated large walkway between South and North Hyde Park
- There is no mention in the summaries of improved signage in the Park both to Park features and Sydney landmarks and public transport. I regularly answer questions about directions from disoriented tourists.

Other comments made

Discussion of themes

Connect Hyde Park to the Domain – 2 comments

Hyde Park to have a better connection to the Domain. One suggested a direct road crossing between the two as it currently takes too long to cross the road.

Single comments

- Integrate with Cook and Phillip Park
- Look forward to seeing the plan bear fruit
- Petanque pitches, skaters facilities
- Suggest an icon tree from our time be included. The Wollomi Pine be planted in a prominent location
- Indigenous education – about who lived here before white settlement. Is this covered? I would like it to be looking at flow of people/traffic to domain
- Maintain aspects of Park creating an oasis in the middle of the city is one I greatly approve of, so future generations can enjoy it
- Fewer ibis
- Great challenge, which deserves (and gets?) full financial support of the central/local government
- We are lucky country and it is nice to know you have good people within the local council here in the City of Sydney

The participants

Gender

Gender	Number of respondents	Percentage of respondents
Male	5	45
Female	6	55
Total	11	100

Age Group

Age group	Number of respondents	Percentage of respondents
15-21	0	0
22-35	2	20
36-49	2	20
50-64	4	40
65-79	1	10
80+	1	10
Total	10	100

The participants cont'd

Postcode

Postcode and area	Number of respondents	Percentage of respondents
2010 – Darlinghurst, Surry Hills	2	18
2101 – Elanora Heights, Ingleside, Narrabeen	2	18
2015 – Alexandria, Beaconsfield, Eveleigh	1	9
2052 – University of New South Wales	1	9
2560 – Campbelltown	1	9
2291 – Merewether	1	9
2089 – Neutral Bay	1	9
2000 – Millers Point	1	9
Overseas	1	9
Total	9	100

Anecdotal comments received by
exhibition personnel from visitors who
did not complete a written response

Anecdotal comments

The following anecdotal comments were received by personnel who staffed the exhibition, during discussions with participants who stated they did not wish to complete a written feedback form.

They have been included as they provide a representation of the participants' disposition towards the draft Masterplan and Plan of Management. The anecdotal comments received were overwhelmingly positive.

The Tree Management Plan

The City's Arboricultural Services Manager

Below is a summary of anecdotal comments received during the exhibition of the draft Plan of Management and Masterplan by staff from the City's Arboricultural Services Manager and Tree Services Coordinator.

There was predominantly understanding and support from the community for the tree removal and replacement program, as set out in the Tree Management Plan

The most common questions posed by participants were:

- what type of tree will be planted?
- how large will they be and
- when will the works start?

Other key issues related to the types of diseases and how easily they spread and the problems with the soil.

Once people were given a detailed explanation, there was acceptance and sadness that it had to happen. Most commented that they understood all trees have a finite lifespan and that they would have to be replaced at some stage.

The City's arboreal staff advised that numerous phone calls have been taken by from people wondering when the works will start, as they would like to take photographs of the before and after. It was also suggested that the City hold a photograph competition for the community, which is something we are pursuing now.

Clouston and Associates – Landscape Architects

Below is a summary of anecdotal comments received during the exhibition of the draft Plan of Management and Masterplan by staff from the landscape architect Clouston Associates Pty Ltd.

- Trees were the highest issue raised by visitors to the exhibition
- Most people understood the need for removals due to disease
- People were interested in when the trees would be removed.
- A few people commented that they would like to see the fairy lights kept in the new trees.
- Generally people supported the block replacement strategy, particularly based on the fact that advanced trees were being proposed as replacements.
- Generally people supported the Hills Figs as the preferred replacement species.
- One person did not support the proposed method of replacement and felt a better solution should be investigated.
- Two respondents commented on the new views opened up to St Mary's Cathedral since the removal of trees.

General Feedback about the draft Plan of Management and Master Plan

Feedback was positive with most people interested in what was being proposed and supportive of the upgrade works.

Prior Understanding of the Project:

- A high percentage of people were aware of the proposed tree removals (due to disease) from the wide media coverage but fewer were aware of the Draft Plan of Management and Masterplan.
- Some were aware of the proposal for the water cascade proposed for Hyde Park South due to media coverage.

Other Issues Raised

- How much will the upgrades cost?
- When will the work begin?
- What will be the first upgrades?
- One person inquired about the possible bridge connection between the north and south.

In summary, the overwhelming majority of anecdotal comments by visitors to the exhibiton of the Draft Plan of Management and Masterplan were supportive of each and of the Tree Management Plan.

-

The Written Submissions from Organisations

Aboriginal Housing Company

Aids Trust of Australia

Australian Museum

Australian Olympic Committee

Edmund Rice Centre

The Returned and Services League of Australia

The Trustees of the ANZAC Memorial Building

The Premier's Department of NSW

Aboriginal Housing Company

Council received a brief submission from the Aboriginal Housing Company, they have requested more time to respond to the draft plan of management. Their current submission raised the following issue;

Inclusion of an aboriginal statue

Council should consider the inclusion of an Aboriginal statue maybe Pemulwuy, or even a memorial to the Gadigal clan who were killed off by small pox.

Hi Monica

Mick has asked me to e-mail you regarding the City of Sydney's draft Hyde Park Plan of Management and Masterplan. He would like to put in a submission idea. I understand that today is the closing date. His submission will be brief. On behalf of the Aboriginal community he would ask that the Council consider the inclusion of an Aboriginal statue maybe Pemulwuy. Or even a memorial to the Gadigal clan who were killed off by small pox. Thank you for considering our submission.

Regards, Peter Vallis on behalf of Mick Mundine
Chief Executive Officer of the Aboriginal Housing Company

The Aids Trust of Australia

Council received a submission from the Aids Trust of Australia. Summary points from the submission include the following issues.

Support for the draft Plan of Management

The Aids Trust of Australia supports the draft Plan of Management and recognises the Park's cultural and heritage significance as a major icon in the city of villages.

Minimizing the impact of events in the Park

The Aids Trust has tried to ensure that events have minimal impact on the natural environment through logistical planning, respecting tree and plant health and limiting vehicles within the Park. This year they will be adding 'eco-police' to ensure visitors respect the natural environment.

Maintain long standing established events like the Food and Wine Fair

The Aids trust expressed concern that Council's wishes to retain clear views along and across the main avenue might effect events such as the Food and Wine Fair that utilise the area around the Archibald Fountain. They wanted to ensure that the Food and Wine fair would maintain the number of stalls it has had in previous years as this event is a vital fundraiser for the Aids Trust.

7 September 2006

Mr Jeff Kerr
Project Manager
City of Sydney
Via email

Dear Mr Kerr,

Thank you for your invitation to comment on the Draft Plan of Management and Master Plan for Hyde Park.

The AIDS Trust of Australia strongly supports the Draft Plan of Management for Hyde Park, Sydney's Premier Park. We recognise its cultural and heritage significance as a major icon of our city of villages, as well as a place of recreation.

In our long history associated with Hyde Park, we have ensured minimal impact on the natural environment through logistical planning, respecting tree and plant health. We also manage soil and grass compaction and damage by limiting the vehicles within the park to an absolute minimum. In addition, during the setup and dismantling of the fair, we ensure that access is not limited to the general public. This year we will also be adding "eco police" to the park who will be roaming the park ensuring that visitors respect the natural environment.

We appreciate that Council wishes to retain clear views along and across the main avenue, however we believe that long standing, established events like the Sydney Food & Wine Fair should continue to be able to utilise the area around the Archibald Fountain for stall holders and also sitting areas for attendees. The Sydney Food & Wine Fair is the major fundraiser for the AIDS Trust of Australia, and maintaining the number of stalls that we have is vital to ensuring that we can continue to raise funds to enhance Australia's response to HIV/AIDS.

We greatly appreciate the sponsorship of the City of Sydney, and look forward to working together in 2006 and beyond.

Yours Sincerely,

The Australian Museum

Council received a submission from the Australian Museum. Summary points from the submission include the following issues.

The draft Plan of Management

The Museum has no specific comment on the draft Plan of Management.

Council should provide continuing opportunities for ongoing consultation

As a key stakeholder in the Hyde Park Precinct the Australian Museum appreciates being invited to comment on the draft and hopes that there will be more opportunities to comment on the Park, particularly in regard to tree planting and event planning. The submission received stated that “consideration be given to establishing an appropriate and effective mechanism to facilitate this stakeholder input.”

E-mail Message

From: Roger Muller [SMTP:Roger.Muller@austrmus.gov.au]
To: City of Sydney Website - Customer Matters [EX:/O=CITY OF SYDNEY/OU=TOWN HALL HOUSE/CN=RECIPIENTS/CN=CITY OF SYDNEY WEBSITE - CUSTOMER MATERS]
Cc:
Sent: 7/09/2006 at 12:20 PM
Received: 7/09/2006 at 12:15 PM
Subject: Hyde Park draft plan of Management and Master plan

I am responding to Russell Lloyd's letter of 11 August 2006 to the Director of the Australian Museum, Frank Howarth, inviting comments on the Hyde Park Draft Plan of Management and Master plan.

As a key stakeholder in the Hyde Park precinct, the Australian Museum appreciates having been invited to comment on the draft, and having been invited earlier to participate in Round One consultations. While we have no specific comment on the draft Plan, we hope that continuing opportunities for ongoing consultation will be built into the plans as they go forward - in particular, with regard to tree planting and event planning.

The Museum sees significant scope for stakeholders located adjacent to the Park to be both a source of support for the Park and developments/events therein, as well as making more effective use of the Park facilities. We recommend that consideration be given to establishing an appropriate and effective mechanism to facilitate this stakeholder input.

Yours sincerely

Roger Muller
Executive Officer
Director's Office
Australian Museum
6 College Street
Sydney NSW 2010 Australia
Tel: 02 9320 6230
Fax: 02 9320 6074
Inspiring the exploration of nature and cultures.

The Australian Museum.
Australia's first - and leading - natural sciences and anthropology museum. Visit www.amonline.net.au

The views in this email are those of the user and do not necessarily reflect the views of the Australian Museum. The information contained in this email message and any accompanying files is or may be confidential and is for the intended recipient only. If you are not the intended recipient, any use, dissemination, reliance, forwarding, printing or copying of this email or any attached files is unauthorised. If you are not the intended recipient, please delete it and notify the sender. The Australian Museum does not guarantee the accuracy of any information contained in this e-mail or attached files. As Internet

11/09/2006

Australian Olympic Committee

Council received a submission from the Australian Olympic Committee. Summary points from the submission include the following issues

The removal of the Olympic Memorial plaque from the ANZAC Memorial

The Australian Olympic Committee expressed concerns that the draft Plan of Management does not include the Olympic memorial. They were informed by the Councils' project office that the development of Dellit's cascade water feature would impact on the Olympic Plaque and it would have to be removed.

Lack of consultation with regards to the Olympic Memorial Plaque

The Olympic Memorial plaque is a sensitive issues and the Australian Olympic Committee stated that they are "baffled by the lack of consultation from the City of Sydney."

AUSTRALIAN OLYMPIC COMMITTEE

INCORPORATED
A.B.N. 33 052 256 241

President
John D Coates AC



Level 27
The Chifley Tower
2 Chifley Square
Sydney NSW 2000
Australia

Telephone: 61 2 9247 2000
Facsimile: 61 2 9223 0036
john.coates@olympics.com.au
www.olympics.com.au

4 August 2006

The Rt Hon The Lord Mayor of Sydney
Councillor Clover Moore MP
City of Sydney
Sydney Town Hall
Level 1, 483 George Street
SYDNEY NSW 2001

By facsimile and Courier

Dear Lord Mayor *Clover,*

I am writing to express our great concern over plans to redevelop the Anzac War Memorial in Hyde Park.

We are informed that the new plan does not include the Olympic Memorial which was dedicated at an International Service for Peace and Fallen Olympians at the Anzac Memorial Pool of Reflection just one week prior to the Opening Ceremony of the Sydney Olympic Games.

The Memorial honours those Olympic athletes who have died in war and celebrates the cause of peace. Olympians, particularly those who served their country, are extremely proud of the Memorial.

Those same Olympians have expressed their bitter disappointment on hearing the plaque, a tribute to their fallen colleagues and others who were casualties of war, is not included on the new plan to go before the Council this Monday August 7 2006.

We are told by your project office the "Council is committed to building a cascade of water" which was contained in Bruce Dellit's original plan. Further we are told "the size and shape of Dellit's plan will impact on the Olympic plaque and it will have to be moved".

** check.*

I am well aware you were not in office in 2000, but please be aware the Olympic Memorial project was driven by Rusty Priest, the then NSW President of the RSL, with the full support of the New South Wales Government, SOCOG, the City of Sydney and the Australian Olympic Committee.

Indeed the Lord Mayor of the day, the Right Honourable Frank Sartor, delivered a most moving speech on the occasion of the dedication.

I am sure you can appreciate this is a very sensitive issue and we are baffled by the lack of consultation from the City of Sydney.

We only learnt of this plan via the news media and subsequent calls from angry Olympians.

John

To move the Olympic plaque from War Memorial precinct is unacceptable, to exclude it totally from the new plan displays a lack of respect to those Olympians who paid the ultimate sacrifice for their country.

Please do not allow this to happen.

Yours sincerely



JOHN D COATES

cc The Hon Frank Sartor MP, Minister for Planning, Minister for Redfern Waterloo,
Minister for Science and Medical Research, and Minister for Assisting the Minister
for Health (Cancer);
Mr Don Rowe OAM, Deputy National President and NSW State President, The
Returned Services League of Australia;
The Hon Bruce Billson MP, Minister for Veterans' Affairs

Edmund Rice Centre

Council received a submission from the Edmund Rice Centre. Summary points from the submission include the following issues

Recognition of Aboriginal Heritage

Whilst there is a large statue of Captain Cook in the park to recognise the coming of European settlers to Australia, there is nothing to honour in any significant way the original inhabitants of the land. The Centre seeks appropriate recognition of Aboriginal people in any redevelopment.



Edmund Rice Centre

Awareness ♦ Advocacy ♦ Action

CEO
City of Sydney
GPO Box 1591
Sydney NSW 2001

Dear Sir

I am writing with regard to the draft Hyde Park Plan of Management and Master plan currently on exhibition.

Hyde Park is a significant landmark used by many citizens and visitors to Sydney. I note that there is a large statue of Captain Cook in the park to recognize the coming of European settlers to this land. However there is nothing to honor in any significant way the original inhabitants.

I hope that in any redevelopment the Aboriginal people will be recognized in a significant way.

Yours faithfully

Philip Glendenning
Director
1st September, 2006.

Edmund Rice Centre for Justice and Community Education

9 Alexandra Ave
Croydon NSW 2132
Email: erc@erc.org.au

Phone: + 61 2 9745 9700
Fax: + 61 2 9745 9770
Website: www.erc.org.au

The Returned and Services League of Australia

Council received a submission from the Returned Services League of Australia. Summary points from the submission include the following issues.

Support for Dellit's water cascade

The Returned and Services League of Australia support the proposed water cascade in Hyde Park because it will fulfil the original vision for the ANZAC Memorial.

The removal of the Olympic Memorial plaque

The Returned and Services League of Australia expressed concern that the Olympic Memorial Plaque has not been included in the draft plan of Management, and requests that the plaque be included in the new plan before Council.

The Returned and Services League of Australia



Patron
Her Excellency Professor
Marie Bashir AC Governor
of New South Wales

State President
D.E.J. Rowe OAM

State Honorary Treasurer
R.D. White, AM, RFD.

State Secretary
C.P. Perrin AFAIM

ANZAC House, 245 Castlereagh Street, Sydney NSW 2000

Telephone: (02) 9264 8188
Facsimile: (02) 9264 8466
Email: statsec@rslnsw.com.au

Address all correspondence to
the State Secretary and quote

3293/DR:js

If telephoning or calling with
reference to this letter, contact

MR ROWE

7th August, 2006

Ms Clover Moore MP
Lord Mayor of Sydney
GPO Box 1591
SYDNEY NSW 2000

Dear Lord Mayor,

I write in response to your recent announcement of a proposed water cascade in Hyde Park to fulfil the original vision for the ANZAC Memorial.

The RSL in New South Wales fully support this proposal. However, we would urge you to consider the Olympic Memorial, which was dedicated at an International Service for Peace and Fallen Olympians at the ANZAC Memorial Pool of Reflection prior to the opening ceremony of the Sydney Olympic Games.

We have been contacted by the Australian Olympic Committee expressing their disappointment on hearing that the plaque is not included on the new proposed plan. The RSL strongly support their request to have this plaque included in the new plan before Council.

I thank you for your assistance.

Yours sincerely,

DON ROWE
STATE PRESIDENT

The Trustee of the Anzac Memorial Building

Council received a submission from the Trustee of the Anzac Memorial Building. Summary points from the submission include the following issues.

Support for the draft Plan of Management

The document has considered the issues and recommendations of the ANZAC Memorial conservation management plan (CMP) and acknowledges the cultural significance of the Memorial and its role as a key focal point within Hyde Park

Amendments to the draft Plan of Management document

The submission from the Trustee of the Anzac Memorial Building identified a number of amendments to the draft Plan of Management, these have been highlighted in yellow in the submission for consideration.

Support for landscape changes that better define the memorials curtilage

Landscape changes such as relocating existing Lone Pine Trees to re-establish a clearer view of the memorial is a positive proposal

The construction of Dellit's water cascade feature

This is supported and should be developed in close liaison with the Trustees of the Memorial. It's construction by November 200 would be a significant commemoration milestone for the 75th anniversary of the construction of the Memorial.

More public amenities near the ANZAC memorial

This is essential to service the increased number of visitors to the memorial and there is no space within the Memorial to accommodate these requirements.

The Park should not become a depository for monuments

This statement fits in with the Trustee's attitude in this regard so as not to dilute the impact, sanctity and significance of the memorial.

Security improvements after hours

The ANZAC memorial remains a target for vandalism including regular graffiti attacks. Security improvements after hours require more frequent patrolling, CCTV and lighting upgrades.

Comments not exhaustive

The Trust stated that there is a need for continuing the close liaison and collaboration between the Trustee of the Memorial and the Hyde Park Trust through the City of Sydney Council.

THE TRUSTEES OF THE ANZAC MEMORIAL BUILDING
(INCORPORATED UNDER ACT 27 1923)

ANZAC HOUSE
245 CASTLEREAGH STREET
SYDNEY NSW 2000

TELEPHONE: (02) 9264 8188

ALL COMMUNICATIONS SHOULD BE ADDRESSED
TO THE HONORARY SECRETARY

File No. 3293

7th September, 2006

The Chief Executive Officer
The City of Sydney
GPO Box 1591
SYDNEY NSW 2001

Dear Sir,

Re: **DRAFT HYDE PARK PLAN OF MANAGEMENT & MASTER PLAN**

Please find the following comments regarding the draft plan of management and master plan for Hyde Park Sydney, on behalf of the Trustees of the ANZAC Memorial Building.

The document dated July 2006 is, in general, a comprehensive review of the circumstances of the development, current condition and future outline plan for the management and reconfiguration of the park landscape. The document has considered the issues and recommendations of the ANZAC Memorial conservation management plan (CMP) and acknowledges the cultural significance of the Memorial and its role as a key focal point within Hyde Park.

Reference is made to the 'War Memorial' rather than the 'ANZAC Memorial' which is the current preferred name. This should be corrected and consistent throughout the document.

The master plan is proposing landscape changes to more formally align and better define the Memorial's curtilage to the original design by its architect Bruce Dellit. The proposal to relocate existing Lone Pine trees to re-establish a clearer view of the Memorial is a positive proposal.

The master plan also seeks to ensure that there is Sydney City Council liaison with the Trustees of the ANZAC Memorial to ensure the Trustee's proposed upgrades to

TRUSTEES

THE PREMIER OF N.S.W	THE LEADER OF THE OPPOSITION	THE LORD MAYOR OF SYDNEY	THE PUBLIC TRUSTEE
THE PRESIDENT THE RSL OF AUSTRALIA (NEW SOUTH WALES BRANCH)		THE PRESIDENT T.B. SAILORS & SAILOR: ASSN. OF N.S.W	

the building's interior have positive impact on the park. This has however been couched in negative terms, rather than a positive approach, and might need to be amended accordingly.

The proposal to review the possible construction of Dellit's cascade water feature, to the south of the Memorial, is supported by the CMP and should be developed in close liaison with the Trustees of the Memorial. It's construction by November 2009 would be a significant commemoration milestone for the 75th anniversary of the construction of the Memorial. As space is at a premium within the Memorial supplementary space under the cascade water feature would be an advantage for use by the Memorial for storage or for other uses including preliminary briefing spaces for school group visits, etc.

In item 1.3 the Pool of Reflection was not 'constructed' after 1989 but at the same time as the Memorial in 1934.

Item 2.2 indicates that the Memorial Trustees are undertaking a draft CMP and master plan. This is correct and therefore future planning of Hyde Park South warrants close liaison and collaboration between the Memorial Trustees and the Hyde Park Trust.

In reference to the statement of significance the comments in section C items 22 and 23 are appropriate. The comment that the ANZAC Memorial "*needs to be considered very seriously*" relates not only to any proposed design changes but also in the way in which the public treats the park space near it and the way that space around the Memorial is interpreted within discrete way finding /sign posting. The subsequent comment regarding the park not becoming a depository for monuments would seem to fit with the Trustee's attitude in this regard so as not to dilute the impact, sanctity and significance of the Memorial.

In item 6 the critical heritage curtilage identified on the Landscape Analysis Map, requiring specific management strategies, is considered appropriate. Close liaison with the Trustees of the ANZAC Memorial is considered important in forming any details of these strategies.

In item 6.3 the comments regarding the building backdrop to the 'ANZAC' Memorial when viewed from the north, is an ongoing issue for the Trustees and does undermine the visual significance of the Memorial. Proposed new development in Liverpool Street will accentuate this issue.

The Trustees would concur that the cultural significance of the Memorial, and its curtilage, are not well conveyed to visitors due to the lack of information and interpretation. Discrete way finding signage may help to redress this.

In 6.4 Future Directions for conservation the improvements to the landscape setting of the ANZAC Memorial are essential. Also the determination of appropriate uses and

TRUSTEES

THE PREMIER OF N.S.W	THE LEADER OF THE OPPOSITION	THE LORD MAYOR OF SYDNEY	THE PUBLIC TRUSTEE
	THE PRESIDENT THE RSL OF AUSTRALIA (NEW SOUTH WALES BRANCH)	THE PRESIDENT T.B. SAILORS & SAILORS ASSN. OF N.S.W	

events within the Hyde Park South should be determined with the input/ collaboration of the Trustees of the ANZAC Memorial. In 7.4 the need for a clearly defined landscape curtilage to the Memorial is considered essential to encourage a more contemplative atmosphere as well as a public awareness and respect for the commemorative aspects of the Memorial.

The need for more public amenities near the ANZAC Memorial in Hyde Park South is essential to service the Memorial visitors who have now increased in numbers to 350,000 per year. There is no space within the Memorial to accommodate these requirements.

In regard to other issues and strategies the ANZAC Memorial remains a target for vandalism including regular graffiti attacks. Security improvements after hours require more frequent patrolling of the area as a deterrent and to complement the CCTV and lighting upgrades already implemented. As the Memorial has no control of the site beyond the footprint of the building the trustees have a limited capacity and jurisdiction to enforce such security and therefore require support for the relevant agencies to maintain a protective stewardship role.

In figure 11.6 Event Management there is reference to exclusion areas where no temporary structures can be erected. The area designated around the Memorial does have temporary structures for ANZAC Day and other commemorative events. There needs to be some exemptions to this requirement for the formal ANZAC Memorial trustees events.

The proposed precinct strategies for precincts 6, 7, 8 & 9 are generally acceptable for the functional and commemorative needs of the Memorial Trustees.

The comments above are not an exhaustive coverage of the issues raised by the master plan for Hyde Park. However the issues raised indicate the need for continuing the close liaison and collaboration between the Trustees of the Memorial and the Hyde Park Trust through the Sydney City Council.

Yours sincerely

D.E.J. ROWE
ACTING CHAIRMAN

TRUSTEES

THE PREMIER OF N.S.W.	THE LEADER OF THE OPPOSITION	THE LORD MAYOR OF SYDNEY	THE PUBLIC TRUSTEE
THE PRESIDENT THE RSL OF AUSTRALIA (NEW SOUTH WALES BRANCH)		THE PRESIDENT T.B. SAILORS & SAILORS ASSN. OF N S W	

Premier's Department New South Wales

Council received a submission from the Premier's Department of New South Wales, Office of Protocol and Special Events. Summary points from the submission include the following issues.

Support for the Draft Plan of Management

The draft Plan of Management recognises the value of events to the Park such as Australia Day, which is organised by the Office of Protocol and Special Events.

Security, Safety and Crime Prevention – page 56, PW 29

The Premier's Department support the plan to review lighting and CCTV in the Park.

Public Events Management - page 57, PW 31

The Premier's Department support the development of a Public Events Management Policy for Hyde Park.

Location Principles – page 57, PW 31

The Premier's department suggested some paved areas that would be able to support the large volume of stalls required in a large public event.

Protecting Heritage Curtilages – page 57, PW 31

Whilst the design of the Park in relation to the key surrounding buildings should be maintained, there should be a degree of flexibility for large scale events such as Australia Day.

Permanent Works and Services – page 58, PW 31

The permanent installation of water, sewer and 3 phase power was greatly encouraged by the Premier's Department to minimise the impact of the installation of temporary services.

Stalls – page 58, PW 31

The Premier's Department suggested the use of grass areas for stalls and/or bar areas, with appropriate protective flooring.

Toilets – page 58, PW 31

The Premier's Department supported the toilet placements that are consistent with the proposed sewage lines on the Event Management Map.

Vehicle access – page 59, PW 31

The Australia Day Operations Centre has for the past two years been located in the northeast corner in the Park in Precinct 2. The Premier's Department propose that this area be designated as one of the defined vehicle entries. Vehicle access in this area should be investigated in consultation with the Premier's Department.

Support/Back of House – page 59. PW 31

The Premier's Department proposed that the British Lawn be designated as an event support area.



Premier's Department
New South Wales

Office of Protocol & Special Events
Level 4, Bligh House
4-6 Bligh Street, Sydney NSW 2000
GPO Box 5341, Sydney NSW 2001
Tel (02) 9513 2000
Fax (02) 9513 2010

Monica Barone
Chief Executive Officer
The City of Sydney
GPO Box 1591
Sydney NSW 2001

RE: Comments for the Draft Hyde Park Plan of Management

Dear Ms Barone

The Office of Protocol and Special Events, organisers of Australia Day in the Park, welcomes this opportunity to provide feedback to the City regarding the Draft Hyde Park Plan of Management. As a designated Major Festival within your Cultural Grants Program, we continue to enjoy a close relationship with the City that is mutually beneficial.

Australia Day in Hyde Park, first held in 1991 is the largest annual celebration that takes place in the CBD and has consistently contributed to the fabric of life within the City. The event gains a great deal from being hosted by such a prestigious site and through working with City staff, we hope that we have contributed to the evolution of planning and management in the Park. We fully support the formalisation of a Management Plan.

The recognition in the Draft Management Plan of the value of events to the Park is particularly encouraging. The benefits of events like Australia Day in the Park are many: the transformation of public space, the gathering of city residents and visitors to celebrate what's great about our country, the excitement generated in the community that leads to a greater sense of belonging, and the economic impact of visitors for surrounding businesses.

As recognised, events do have an impact, but through appropriate management, we believe this impact continues to be minimised so that all stakeholders are able to achieve their goals without adversely affecting the Park.

The following are detailed suggestions regarding the Draft Management Plan that address specific points within it:

Page 56, PW 29: Security, Safety and Crime Prevention. The plan to review lighting and CCTV in the Park is encouraged. Night time safety in Hyde Park has improved markedly in the last ten years, but can still be improved upon.

Page 57, PW 31: Public Events Management. We fully support the development of a Public Events Management Policy for Hyde Park. As many event issues in Hyde Park have been



Premier's Department
New South Wales

Office of Protocol & Special Events
Level 4, Bligh House
4-6 Bligh Street, Sydney NSW 2000
GPO Box 5341, Sydney NSW 2001
Tel (02) 9513 2000
Fax (02) 9513 2010

identified and solved by the teamwork of Premier's Department and City of Sydney staff in the past, we offer our consultation in the formation of this policy.

Page 57, PW 31: Location Principles. Paved surfaces that are able to support the volume of stalls for large public events are limited within the Park, especially given that many of the Heritage Curtilage Areas are focused on the north-south and east-west Promenades. We encourage the flexibility to use grass surfaces for stalls and/or bar areas where necessary and with appropriate protection of the grass surface.

Page 57, PW 31: Protecting Heritage Curtilages. We have always optimised vistas within the Park – believing the design of the park in relation to key surrounding buildings should be maintained wherever possible. Events that are of a major scale, such as Australia Day in the Park, may benefit from a degree of flexibility regarding this, as a healthy compromise can be drawn in certain areas that enable the placement of structures whilst maintaining the vistas.

Page 58, PW31: Permanent Works and Services. We greatly encourage the permanent installation of water, sewer and 3 phase power as well as path strengthening and lawn hardening. This will help minimise impacts on the Park of the installation of temporary services and vehicle and foot traffic.

Page 58, PW 31: Stalls. Regarding the back of stall areas where they comprise planting beds or lawns, the use of appropriate flooring was first successfully trialled on Australia Day 2006. It is important to have protective flooring relative and consistent with the nature of the stall activity. We foresee that the possibility of 'raised decking' could be difficult to implement in all instances from both the City and the event user's perspective.

Page 58, PW 31: Toilets. We encourage that the toilet placements are consistent with the proposed sewage lines on the Event Management Map (Figure 11.5) on page 70. This would supersede the wording on page 58 regarding placement away from park perimeters. Large scale events, such as Australia Day in the Park, generate less impact if toilets are plumbed into sewage lines.

Page 59, PW 31: Vehicle Access. The Australia Day Operations Centre has, for the past two years, been successfully located in the northeast corner in the park in precinct 2. We propose that this area be identified as one of the defined vehicle entries. This has minimised the impact of vehicle entries into the park in the past. In relation to this is a proposed low sandstone wall (page 78) to be erected along the outside of precinct 2 that would make vehicle access far more limited and could lead to the necessity of having to move the Operations Centre. We propose that the vehicle access in this area be investigated in consultation with the Premier's Department.



Premier's Department
New South Wales

Office of Protocol & Special Events
Level 4, Bligh House
4-6 Bligh Street, Sydney NSW 2000
GPO Box 5341, Sydney NSW 2001
Tel: (02) 9513 2000
Fax: (02) 9513 2010

Page 59, PW 31: Support/Back of House. The Event Management Map (Figure 11.5) on page 70 indicates the areas to be designated as suitable for hosting support or back of house areas. For the past two years, the City's park management has instructed us to place our waste management compound in the north east corner of the British Lawn. We would propose that if this is still a desirable event support area, that it be designated as such.

Thank you for the opportunity to contribute to the management plan of this magnificent public asset. We are privileged to organise our biggest Australia Day celebration at a site that has served Sydney so admirably and we look forward to contributing to the Public Events Management Policy.

For more information regarding our comments, please contact Alastair Lyall, Project Manager Special Events, 9513 2047 or alastair.lyall@premiers.nsw.gov.au.

Yours sincerely

Rachel Hurford
Director Special Events Management
Office of Protocol and Special Events
NSW Premier's Department

Submissions about the John Baptist Fountain

Carolyn Chown

Colleen Morris

Alexander Haege

Jean Baptist Uttley

The John Baptist Fountain

Four submissions were received that expressed concerns over the future of the John Baptist Fountain. These submissions have been analysed and coded into themes and are discussed in the table below and the following pages. The original letters have been included from page 35 to page 51.

Themes	Number of Comments
The historical significance of the Fountain	4
The fountain should be restored	4
Errors in the draft plan of management concerning the John Baptist Fountain	3
The oldest fountain in Australia	3
Do not relocate the fountain away from Hyde Park	3
The Fountain's current placement	1
The Fountain's original location	1
Where is the top of the Fountain?	1
Total	18

Discussion of the themes

The historical significance of the Fountain – 4 comments

The fountain has significant heritage value as part of the early history of Hyde Park and to those citizens who supported its development. The trustees of John Baptists' estate donated the fountain just ten years after Hyde Park had been declared for public recreation, at a time when it did not have a fountain. It was also the same year Sydney was celebrating the centenary of European settlement. The fountain is very much a part of the history of Hyde Park.

The fountain should be restored – 4 comments

The John Baptist should be restored into its original condition, this will give some heart back to this sad and neglected part of Hyde Park and pleasure to the people of Sydney who sit around the Fountain or walk past it. One respondent commented that they have been trying for several years to contribute money to its restoration and despite talks with Mayors, Councillors and Council officers this has come to no avail. The respondent stated that they have a quote to restore the fountain and their family is willing to contribute one third of the cost if the Council will pay the other two thirds.

Discussion of the themes... cont'd

Errors in the draft Plan of Management concerning the John Baptist Fountain – 3 comments

The draft plan of management states that the Baptist Fountain came from Redfern Park, this is incorrect. The fountain was originally in Baptist Gardens and was then donated to Hyde Park by John Baptist Jnr in 1888.

The oldest fountain in Australia – 3 comments

The Baptist Fountains, the one in Redfern Park and the other in Hyde Park are possibly the oldest Fountains in Australia. The one situated in Hyde Park is very like to be the oldest Fountain in a public park and possibly a private garden in Sydney. This is a serious reason to keep the fountain and renovate it from its current state.

Do not relocate the Fountain away from Hyde Park- 3 comment

The draft Plan of Management suggests that the fountain be relocated, the fountain is an integral part of north western Hyde Park, predating most of what surrounds it. If the fountain were to be moved out of Hyde Park it would diminish both the history of the Park and the history of the fountain.

The Fountains' current placement – 1 comment

The early 20th Century placement of the fountain in the middle of a lawn area is not ideal and does not adhere to accepted 19th century practices, which was to place fountains at the intersection or convergence of paths.

The Fountains' original location – 1 comment

The fountain was not installed in its current location at the time of donation but was positioned near the bandstand, on the eastern side of the Park in the area now occupied by Sandringham Gardens.

Where is the top of the Fountain? – 1 comment

We were assured that the top of the fountain, which broke off in 1988-1990, had been place in storage. In my discussions with Councillor Black, he had told me that it cannot be found. I would urge Council to contact former staff members of South Sydney Council, who managed SCC parks for some time, who may know where it is stored.

The John Baptist Fountain Submissions

From: Carolyn Chown [mailto:chown.holmby@bigpond.com]
Sent: Wednesday, 23 August 2006 10:55 AM
To: Clover Moore; Verity Firth; vjmcinern@cityofsydney.nsw.gov.au; Shayne Mallard; Michael Lee; Tony Pooley; Robyn Kemmis; Marcelle Hoff; Phillip Black; charris@cityofsydney.nsw.au; Jane Worthy; Eva Rodriguez Riestra; alexhaege@bigpond.com
Subject: SAVE THE BAPTIST FOUNTAIN IN HYDE PARK

SAVE THE BAPTIST FOUNTAIN IN HYDE PARK

Under the Draft Plan of Management for Hyde Park, the Sydney City Council is considering removing the old Baptist Fountain from Hyde Park North.

It has been suggested by Council's representative for art works that the fountain should be renovated. This renovation move has been under consideration for some years, with a proposal undertaken for the Council in 2002. There have also been many pleas from the descendants of John Baptist to save this fountain. As a descendant of John Baptist I, along with other descendants of the Baptist family strongly urge Council to consider the importance of retaining this old piece of Sydney's history.

On Council's website there are many fountains and waterworks mentioned, but nothing telling the history of this fountain.

The Baptist Fountains (one in Redfern Park, which I see is to be renovated) and the other in Hyde Park are possibly the oldest fountains in Australia. This alone is a serious reason to keep the fountain and renovate its present sad state. (I have supplied original photographs of the fountain in situ in the Baptist Gardens, showing what a pretty structure it is).

The story of the fountains goes back to John Baptist, who came to Australia in 1829 on the "Swiftsure" from Lisbon, Portugal. He came free, with his wife and child, under the wing of a Charles Wilson, as that man's valet. Shortly after arriving in the colony however Baptist set up as a butcher in the Redfern area. From this beginning he prospered, buying property extensively over the years, but in particular, setting up the Baptist Gardens in Redfern in the 1830s.

These gardens were extensive. He imported and exported seeds and plants; he sold cut flowers and seeds at markets and supplied orders from overseas nurseries; he was well known in his day for the wonderful wedding bouquets and funeral wreaths he could supply. Some of his exotics helped set up the Botanic Gardens. He opened the Gardens for the public to use and they became one of the first pleasure areas in the city for early colonists to enjoy.

John Baptist died in 1873 and his business interests were taken over by his son, John. The photographs of the Fountain were probably taken after his death, I estimate in about 1876, as the child standing in the fountain is possibly my grandfather, who was born in 1872. Son John gave the fountains: the Fountain in Hyde Park in 1888 and the one in Redfern Park in 1889. The Gardens were divided up and sold at auction in 1890. The Draft Plan of Management states that the Hyde Park fountain came from Redfern Park to Hyde Park. I suggest that this is incorrect, both fountains were in Baptist Gardens, Redfern (I have an old map to tell you where the Gardens were) and were given from there to the respective parks where they now reside.

It is important for items of our early history to be preserved and very sad if the Council, in updating Hyde Park forgets the historical importance of the old days of the Park. This fountain has been left to deteriorate and is in sad condition. It was once one of the

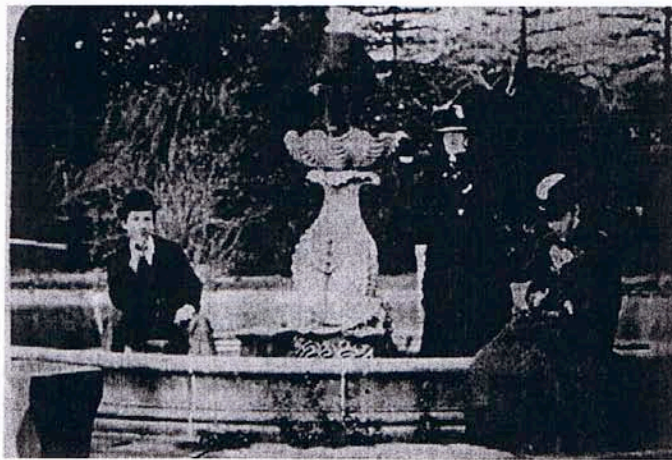
5/09/2006

first fountains that played in a lovely setting in the mid 1800s in Sydney. That is a significant part to have played in our early city, as the Baptist Gardens would have been a unique pleasure area.

John Baptist played a significant part in the early establishment of Sydney. His work helped set in motion our lovely Botanic Gardens. His old fountains are part of our city history. I believe the Hyde Park fountain should be retained and set back into its pretty original, rather than being discarded or displaced.

While I understand that it could be moved to perhaps the Botanic Gardens (as a memorial to his role in its establishment) or to Prince Alfred Park, Redfern, closer to the Baptist Gardens, I strongly believe it should remain in situ to maintain some of the history of our Hyde Park.

Carolyn Chown
129 Somerville Road
Hornsby Heights 2077



5/09/2006

Colleen Morris

M. Herit. Cons.
landscape heritage consultant

33-35 Ilka Street, Lilyfield, N.S.W. 2040

ABN:86 359 278 622

telephone: 96600573

fax: 95662718

email: morris@zeta.org.au

5 September 2006

The Chief Executive Officer ☐

The City of Sydney ☐

GPO Box 1591 ☐

Sydney NSW 2001

RE: Hyde Park Draft Plan of Management and Masterplan

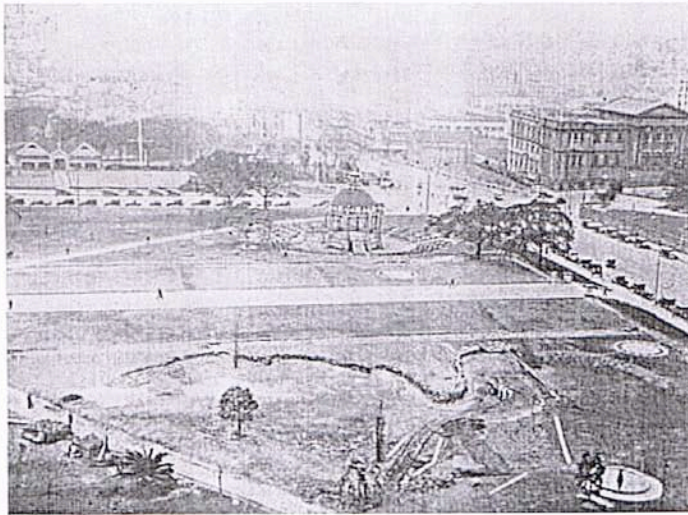
Dear Sir,

I write to comment in particular on the statements in this document concerning the Baptist Fountain. The first issue concerns errors in fact. The Baptist Fountain was not relocated from Redfern Park. It was donated to Hyde Park in 1888 by John Baptist jnr following the lease of the Baptist Nursery site to the Shepherd family in 1885. It is an extremely early fountain in Australian terms and very likely the oldest fountain in a public park, and possibly a private garden in Sydney. Preliminary research indicates that it is likely a pre-1860s fountain, placing it earlier than those at Government House and Vaucluse House. The only other extant example of a fountain that was imported pre-1860s and of known provenance in the greater Sydney region is at Elizabeth Bay House.

The other error is the statement that the fountain was installed in its current location at the time of donation. A photograph from the Mitchell Library Small Pictures File indicates that it was near the bandstand, and in a location. I have given a copy of this image to Councillor Black, who is of the opinion it was situated on the eastern side of the park in the area now occupied by Sandringham gardens. It stood just to the east of the main central avenue and appears to have been relocated when that avenue was replanted. Its new location prior to the replanting of the central avenue is shown in the 1930 photograph below from SCC Archives. The bandstand was still located in the park and the fountain balanced it on the other side of the avenue. As the photograph indicates, this placement appears to have been determined by design principles. It is unclear as to whether the tree in the photograph below is one of those still standing. The ad hoc informal planting since has done nothing to enhance the setting of the fountain.

I agree that this early 20th century placement in the middle of a lawn area is not ideal and does not adhere to accepted 19th century practices, which was to place fountains at

the intersections or convergence of paths. In its original location at the Baptist Nursery, it was a prominent feature in the main avenue of the nursery and in front of a summerhouse. In its original location in Hyde Park it filled a triangular space at the convergence of two paths (just to the left of the edge of the photograph below).



My second concern is one of the historical significance of the donation of the fountain to Hyde Park. The fountain was a well-known feature of the Nursery as a photograph still in the possession of a Baptist descendent indicates. The donation was made to Hyde Park, Sydney's premier public park at a time when it did not have a fountain and in the year Sydney was celebrating the centenary of European settlement. That act in itself is of significance. In my opinion its association with Hyde Park must be respected in any proposals for its relocation.

I write this submission as a private individual. However, when I served on the committee of the Sydney and Northern NSW Branch of the Australian Garden History Society, we raised the issue of the Baptist Fountain with Council staff on a number of occasions. We were assured that the top, which was broken off c.1988-1990, had been placed in storage. In my more recent discussions with Councillor Black, he has told me that it cannot be found. I would urge Council to contact former staff members of South Sydney Council, who managed SCC parks for some time, who may know where it was stored.

Yours sincerely,

Colleen Morris
cc. Councillor Phillip Black

FACSIMILE:
9358 4510

17 Kellett Street
Kings Cross, N.S.W. 2011

TELEPHONE:
9358 4510

6 September 2006

The Chief Executive Officer
The City of Sydney
Town Hall House
SYDNEY NSW 2000

Dear Sir,

RE: Hyde Park – Draft Plan of Management

I wish to make the following submission in regard to the retaining and restoration of item number C-23 – The John Baptist Fountain.

The above report recommends that the fountain be moved to another location and re-erected. I would submit to the Council that the fountain is an integral part of Sydney and Hyde Park's history and that the fountain should be retained in its present original location and restored.

History:

"There is no greater travesty that a civilised society can make than to forget its own history" Winston Churchill.

The Baptist Fountain located in the north western precinct of Hyde Park is the oldest ornamental fountain in Sydney. Despite years of neglect by the Council, it has survived in situ only to be now threatened with demolition. How wonderfully well does Sydney treat her history!

The Baptist Fountain is a marvellous single edifice to one man's genius. John Thomas Baptist was by all accounts a bastard, born on the wrong side of the blanket in Lisbon Portugal (English girls in trouble ended up at the Royal Place of Necessidades (Necessities) in Lisbon) and he came to Sydney in 1829.

In 1830 he began the Gardens of Redfern and they were a mecca for Sydneysiders for 60 years. Firstly, as a market garden for fruit and vegetables and also, renowned for their exotic plants. Baptist was one of the early nurserymen of Sydney and one of the most successful and Sydneysiders flocked to his Redfern establishment.

I have in my possession original letters to John Baptist dated 1854-1856 (copies attached) from Camden Park describing various horticultural matters. Also an interesting testimonial to J. Baptist dated 1861. (Also attached and worth reading as an indication of the esteem in which John Baptist was held).

The Trustees of his estate gave the fountain to the City of Sydney in 1888, just ten years after Hyde Park had been declared "for public recreation". So the fountain is nearly as old as the park itself!

John Baptist is described in articles about him as "a little bustling gentleman" and a "thrustor". In total he eventually owned 36 acres of land in Redfern and Surry Hills (Baptist Street, Telopea Street – waratah, Boronia Street, Zamia Street – native palm, Kepos Street – garden) and considering that he arrived in the colony as a servant he did very well. A nurseryman with a large property portfolio – very Sydney except that he was also a very philanthropic man. Not only did he give to charity as evidenced by the 1861 testimonial but he also gave a priceless collection of his largest and most valuable plants to Hyde Park and the Botanic Gardens, which owe much of their present day loveliness to his gift.

Retained:

The Draft Management Plan suggests that the fountain be "relocated". As this is tantamount to demolition it is unacceptable both from the aesthetic and historical perspective.

The City of Sydney has been trying to remove the fountain since 1932 (see archives) without success. Now the fountain is 118 year old it deserves a little more consideration and care than it has received over the past century.

The fountain is an integral part of north western Hyde Park, pre-dating most of what surrounds it. The removal of the fountain would diminish the history of the park and the history of the fountain.

Restoration:

I have been trying (unsuccessfully) for several years to contribute money to the restoration of my great, great grandfather's fountain. I have talked to mayors, councillors and council officers – all to no avail.

To me the restoration of this simple fountain should be the easiest of matters. That it needs restoring, after decades of neglect by the Council, is obvious. But no, nothing can ever be done. Inertia rules. Certainly money can be found for skateboard parks. Very necessary I am sure and very expensive!

Meanwhile, this piece of Sydney's history stands neglected and forlorn. I wonder what visitors to our city think when they walk past this dilapidated icon. Can you imagine such a situation in New York, London or Paris. There would be a hue and cry and heads would roll. But in dear old Sydney the solution is to call for a "masterplan" to bulldoze history.

I have a quote (attached) dated 08/05 for \$104,280 to restore the fountain. This figure would need to be updated but I do not anticipate a large increase. My family will contribute one third of this cost if the Council will pay the other two thirds. As well, we will contribute to the City the original documents that we hold pertaining to John Baptist and commission a short history of this life to be placed near the fountain. What could be fairer than that?

Solution:

Restore the fountain where it is and give some heart back to that sad and neglected part of Hyde Park and pleasure to the people of Sydney who sit around the John Baptist Fountain or walk past it.

Thank you for considering my submission and I would be grateful if I could have the opportunity to address the committee meeting that will be examining these submissions. I look forward to your favourable response. Could you contact me at my email address : alexhaege@bigpond.com.

Yours faithfully,



Alexander Haege

0416 016 933

c.c. National Trust of Australia
c.c. Elizabeth Farrelly – Sydney Morning Herald
c.c. Professor Ed Blakely – Department of Urban and Regional Planning
University of Sydney
c.c. Phillip Black
c.c. Carolyn Chown
c.c. Gadens - lawyers

P.O. 49 Pacific Fair
Queensland 4218
1st September 2006

The Chief Executive Officer
City of Sydney
G.P.O. Box 1591
Sydney 2000.

Dear Sir

Re. Draft Hyde Park
Plan of Management

Ref. Parkwide Strategies
PW2 – Buildings & Monuments
- John Baptist Fountain.

As you will notice , I am resident in Queensland and quite recently was alerted to the above , receiving the Plan only a few days ago. As a direct descendant of John Thomas Baptist – my Great Great Grandfather , I wish to record with the Council my alarm that the Dolphin Fountain in question may be headed for removal and possible demolition. My Great Great Grandfather developed over the early years of Sydney's history the "Baptist Gardens" which later became the suburb of Redfern, and his son John Baptist donated the fountain from these gardens to Hyde Park when the area was sub-divided.

I firmly believe that the fountain , although in a very dilapidated state , has a significant heritage value as part of the early history of Hyde Park and to those citizens , who supported its development.

In researching some arguments to support its re-positioning and renovation , I am attaching copies of some old correspondence- the originals of which are in my possession , and all of which highlight the fountain's history and the importance of John Baptist's contributions to the botanical development of early Sydney.

Letter 1 . Dated 17th August 1888.

From Sir Alfred Stephens – Chairman of the Hyde Park Trustees ,
acknowledging John Baptist's many gifts to the park and for the stone

fountain . He also makes mention of his earlier walks through the "Baptist Gardens".

Letter 2. Dated 7th September 1888.

Again from Sir Alfred Stephens inviting John Baptist to the switching on of the fountain at 3.45 PM. on the 11th September.

Letter 3 Dated 10th September 1888.

From John Baptist acknowledging the invitation to the opening ceremony , but declining for the reason he elaborates.

Letter 4 Dated 11th June 1890.


From Sir Henry Parkes thanking John Baptist for his gifts to the Botanical Gardens.

Letter 5 Dated 1st August 1890.

From Sir Alfred Stephens being a further thanks to John Baptist for gifts of two palms planted near the "Dolphin Fountain" in Hyde Park.

I sincerely believe that the above " Pieces of History " well warrant the Council to give serious consideration to restore and possibly re-position the fountain , and also in conjunction , recognize the importance of John Baptist as a true benefactor to the history and development of Hyde Park,

Yours Truly
Jeanette Baptist Uttley.



(1)

24 College Street.
17th Aug. 1888.

My dear Sir.

As Chairman of the
Hyde Park Trustees, I write
to express to you & your
very warm thanks
for your many presents
to us - and now for the
valuable gift of the Stone
Fountain - erected in the
Park at your sole expense.

We have felt pleasure in
directing a marble slab
to be placed on the base,
Recor.

Recording your gift - and
we hope that your memory
as that of a successful and
good citizen, will be preserved
in your fellow men, along
with the record of your personal
gift. I am very truly yours

Alfred Stephenson

W. Baptist. -
Banks Street
Sunny Hills.

P.S. I add for myself
that I remain for pleasant
walks in "Baptists Gardens"
with my young folks many
years ago - and seeing
have your father. I am
sorry to think of the change,
however inevitable, to build ge-
- supplying the streets
and flowers of past days.

W.I.

By Post / 8 1/2
College St.
Friday 7th Sept.

Dear Mr. Baptist.

We propose to set the
Fountain playing on Tues-
-day next (11th) at
3.45. Will you oblige
us by your presence; -
& by partaking with us
of a biscuit & a glass of
Champagne - in which we
propose to drink your
health. Yours truly

Alfred Stepher
John Baptist & Co

1/2
Dear Sir, 10 Sept/88.

The Hon/ Sir Alfred Stephens

G. O. C. U. G. C. B. -
College Str.

Sir, I thank you very much for the kind invitation to be present tomorrow afternoon when it is proposed to set the Fountain playing on Hyde Park, and I fully appreciate the honor intended to be done me by drinking my health on the occasion. But as my acceptance of your Courteous hospitality would be a deviation from that unostentatious manner in which I am so desirous that my gift should pass into the possession of the Public through the medium of the Trustees I trust you and your Co Trustees will pardon my absence.

I would add that I am highly pleased to know that the Fountain secured the approval of the Trustees

and I shall be delighted if that feeling is endorsed by the Public. My conclusion permit me to say that I am much indebted to you and your Co-Trustees for permitting the Fountain which stood for so many many years in my Gardens to be preserved in such an important Public reserve as Hyde Park. -
I am, Sir,

Yours with much respect.
John Baptist.

(3)

4

John Baptist Van Broek
19 June 1900
Mrs. H. H. H. H.
14690
BOTANIC GARDENS, N.S.W.
SYDNEY

Sydney, 11th June 1890.

Sir,

It having been represented to me that you have upon several occasions presented to the Botanical Gardens, ~ propagating glasses, hot plant and valuable garden ~ implements, I have much pleasure in conveying to you the thanks of the Government for your very generous gift, and my high appreciation of the great interest you take in the most important of our Botanical Institutions.

W. J. S.
I have the honor to be,

Sir,

Your most obedient servant,

John Baptiste Esq.

Henry James

(5)

Post
1890
XII

College St. 1st August
1890.

Dear Mr. Baptist.

You have on so many occasions been a generous friend to the Parks under your trusteeship, that it is not easy to find varying words to express our thanks - which are due to you from the Public equally with ourselves. I write now to acknowledge - and cordially thank you for your recent gifts of the two magnificent Palms - the *Macrozamia* *Spiralis* and *Lycas Revoluta*; which are planted in the enclosure next to your gift of the Dolphin Fountain. The many fellow citizens who now daily

Visit

Visit Hyde Park will not forget
that they owe to you many of its
attractions. I am, for myself and
my colleagues in the Trust, —

Very truly yours,

Alfred Stephenson.

Mr. John Baptist
Sydney. —

Summary of Individual Letters

Summary of Five individual letters - Themes

Don't clutter the Park with extra monuments, statues or water features – 3 comments

These respondents requested that Hyde Park does not become over cluttered with too many extra monuments, statues or water features and they agreed with the Plans removal of the Busby Bore sculpture. The proposed water feature along the pathway leading to Liverpool Street was considered unnecessary because of the much-liked water features in the Park such as the Archibald Fountain and the Pool of Remembrance. One respondent also commented that the F. J. Walker Fountain should be taken out of the Park.

The Plan of Management involves no major change – 1 comment

The Plan of Management is not suggesting a radical makeover or any major change, the Plan enables Hyde Park to remain a Park with it's 19th Century design values preserved.

New Statue – 1 comment

A stature on the corner of Elizabeth and Park to 'counter balance the Cook statue. What about a sculpture of Frank Sartor, possible one foot perched on the head of Town Clerk Leon Carter, OAM etc., glancing down the road towards Town Hall wondering 'what are they doing now?'

The Park should contain a symbolic reminder of the Aboriginal ownership of the land – 1 comment

While Hyde Park currently enshrines the courage and losses of Australia's defenders and its gardens express the unique nature and strong sense of place there is no recognition of its aboriginal heritage. It would be appropriate to consult the traditional owners, survivors of Eora Nation, representative, aboriginal story tellers, scholars and holders of traditional knowledge to discuss a fitting symbolic reminder of Aboriginal ownership of this land.

Other single comments

- Hyde Park as a complete drug and cigarette free zone
- Add some benches on grassy areas
- Add some more water feature. The fountain is the jewel in the crown
- A modern enclosed playground in the south side of Hyde Park