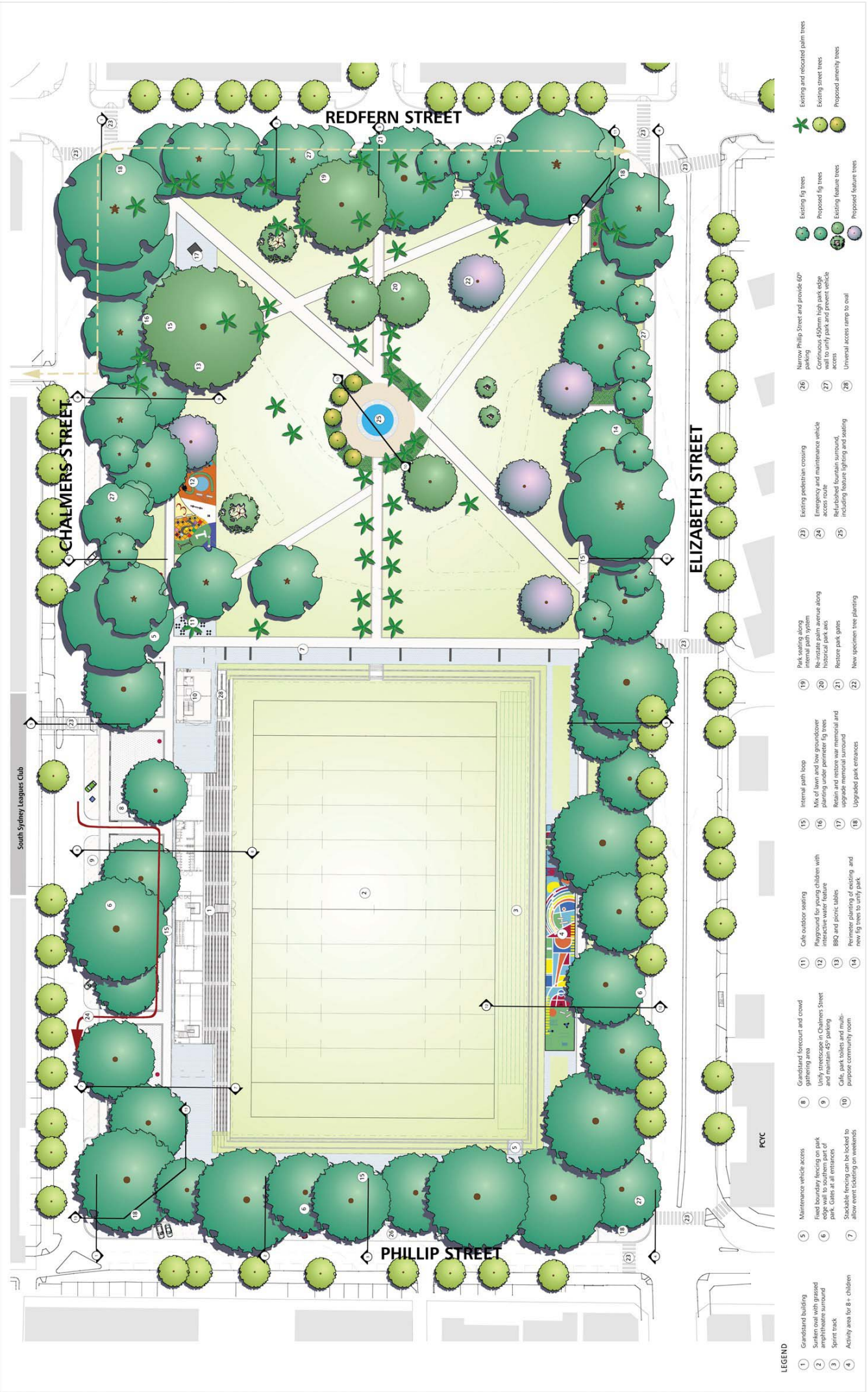


ATTACHMENT C

**REDFERN PARK - UPDATED MASTER
PLAN**



LEGEND

- 1 Grandstand building
- 2 Sunken oval with grassed amphitheatre surround
- 3 Sprint track
- 4 Activity area for 8+ children
- 5 Maintenance vehicle access
- 6 Fixed boundary fencing on park edge walk to southern part of park. Gates at all entrances
- 7 Stackable fencing can be locked to allow event ticketing on weekends
- 8 Grandstand forecourt and crowd gathering area
- 9 Utility telecopes in Chalmers Street and maintain 45° parking
- 10 Cafe, park tables and multi-purpose community room
- 11 Cafe outdoor seating
- 12 Playground for young children with interactive water feature
- 13 BBQ and picnic tables
- 14 Perimeter planting of existing and new fig trees to unify park
- 15 Internal path loop
- 16 Mix of lawn and low groundcover planting under perimeter fig trees
- 17 Retain and restore war memorial and upgrade memorial surround
- 18 Upgraded park entrances
- 19 Park seating along internal path system
- 20 Re-instate palm avenue along historical park axis
- 21 Restore park gates
- 22 New specimen tree planting
- 23 Existing pedestrian crossing
- 24 Emergency and maintenance vehicle access route
- 25 Refurbished fountain surround, including feature lighting and seating
- 26 Narrow Phillip Street and provide 60° parking
- 27 Continuous 450mm high park edge wall to unify park and prevent vehicle access
- 28 Universal access ramp to oval

- Existing fig trees
- Proposed fig trees
- Existing street trees
- Proposed street trees
- Existing amenity trees
- Proposed amenity trees
- Existing and relocated palm trees



