

On-street outdoor dining kit

What's on offer

Introduction

This document outlines the items the City will provide for on-street outdoor dining areas, as well as two example layouts. It supplements our official [outdoor dining guidelines](#).

Offering businesses the opportunity to create outdoor dining areas in car parking and other on-street spaces is a new, trial initiative for the City. As the trial progresses and we receive community feedback, we'll refine and strengthen our service.

If you have any queries, please call us on 02 9265 9333.

Kit provided by the City

Concrete safety barriers

The City will provide the necessary safety barriers for your site, regardless of size. These will be installed and removed for free.

The barriers will be covered in decal artwork. You can choose from one of ten artwork designs, see pages 4-6. These artworks have been licenced by the City of Sydney.

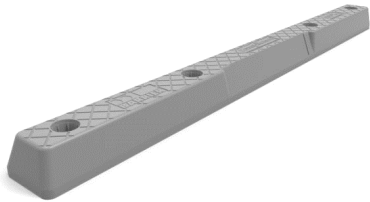


If you prefer to cover the concrete barriers in your own choice of design, at your own cost, this is possible. Select the “bespoke design” option on your application form. Note: your application will take longer to approve and will include some fees.

On-street outdoor dining kit

Wheel stops and ramps

We will provide wheel stops and ramps if your area needs them. We will determine this at a site inspection.



What you can include in your area

You can include the following in your on-street dining area:

- Tables and chairs
- Umbrellas
- Plants
- Synthetic grass – this is permitted only if it is maintained in a safe, clean and presentable state at all times.

Furniture items must adhere to our [outdoor dining guidelines](#).

Artworks



Suspended Figures by Prudence Stent and Honey Long



Ngaarr by Lucy Simpson



Unvanishd by Kent Morris

On-street
outdoor dining kit



Time Forms by Lisa Sammut



Midnight Zoo by Studio A artists Emily Crockford, Lauren Kerjan, Thom Roberts and Phillip Sidney



Giant Bonsai by Garry Trinh

On-street
outdoor dining kit



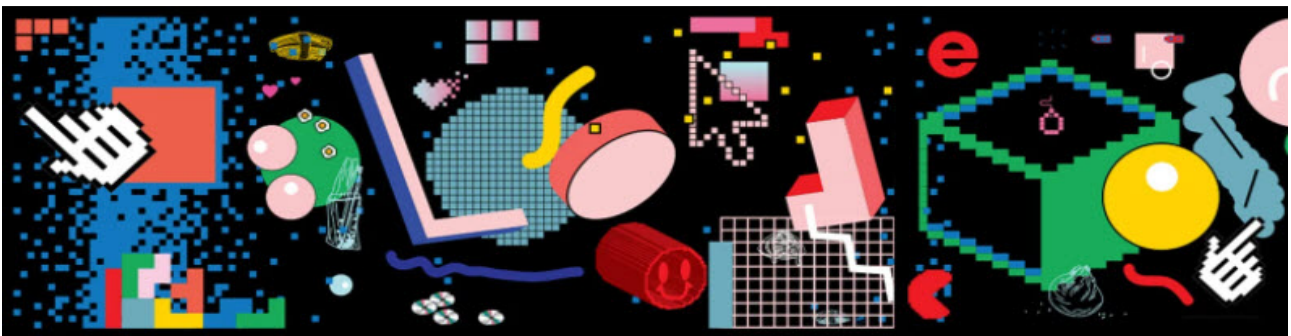
Magic Circles by Kieran Butler



Koala Fantastical Fabulous Fun by Rosie Deacon

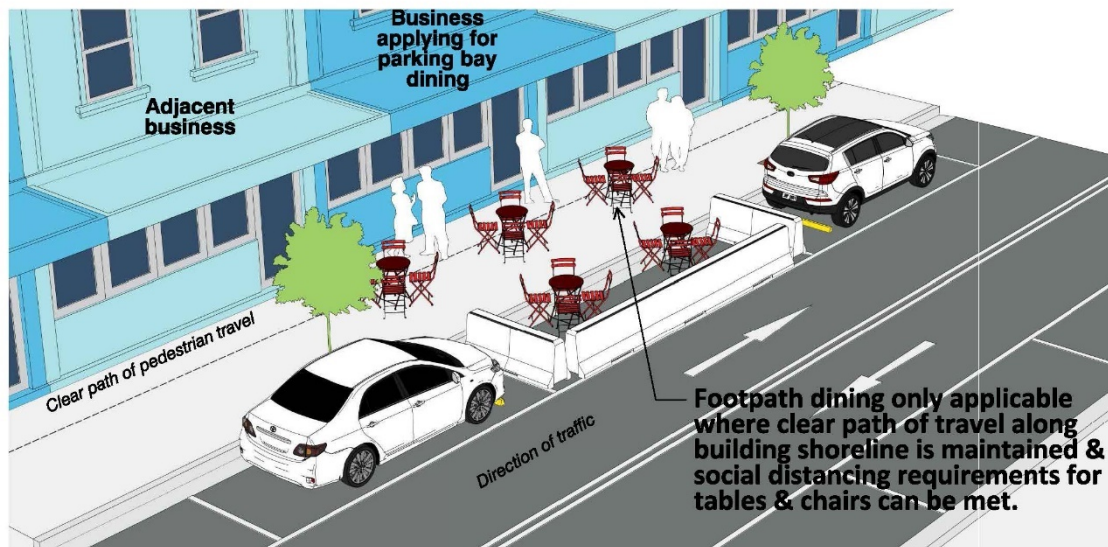


In the future...I want to be a unicorn by Alphabet Studio



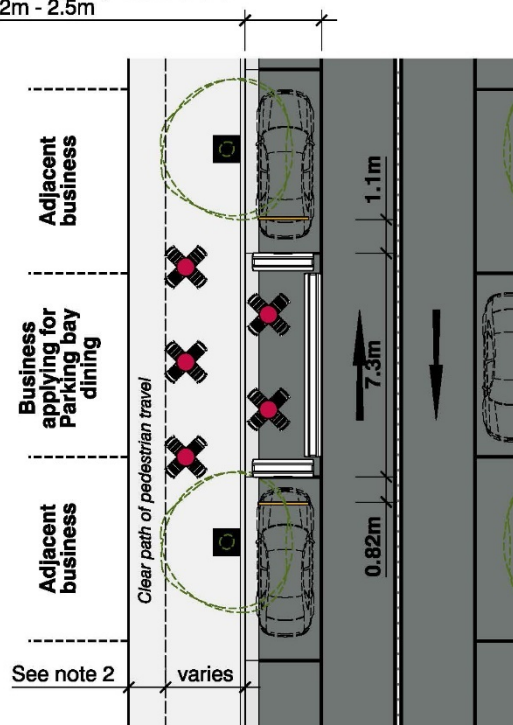
BADABABABBBAT-DA by Tegan Wotton

Example 1






Axonometric view

Parking bay width varies
2m - 2.5m



Typical plan

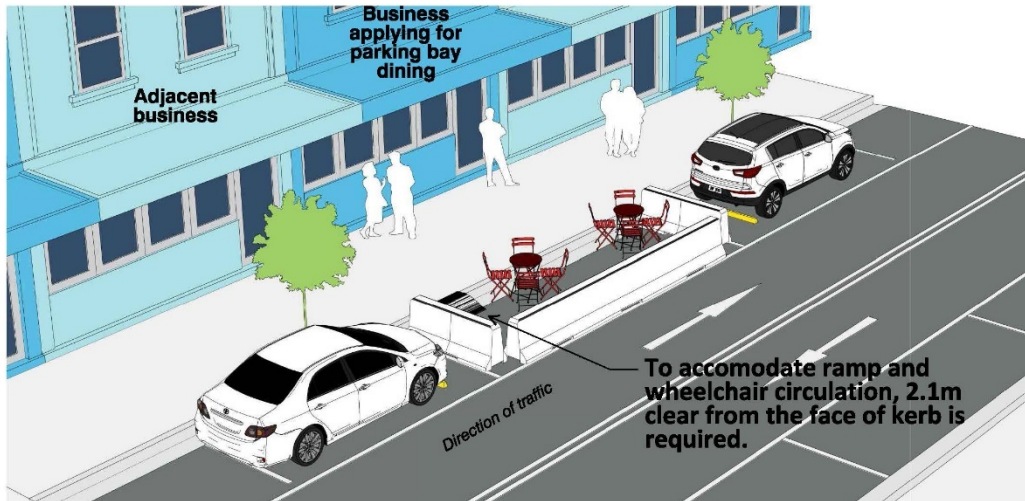
Legend

-  Cafe table and chairs
-  6m long concrete jersey barrier
-  Wheel stop

General notes

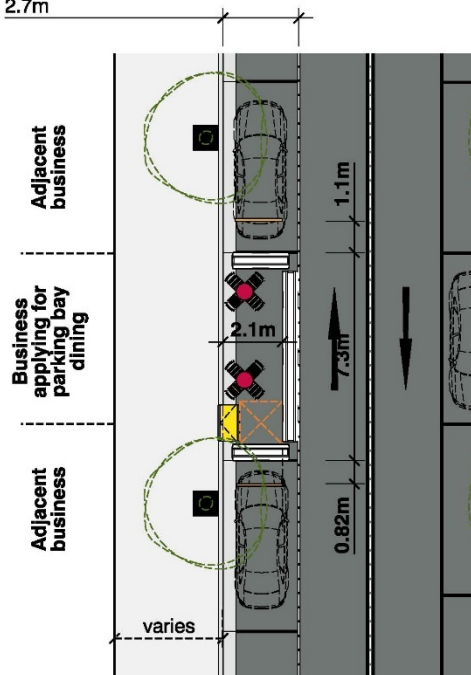
1. Dining furniture and layout of table and chairs must adhere to social distancing requirements.
2. A minimum 1.8m clear path of travel must be maintained along building shoreline. A reduction to 1.2m may be considered if there are wider passing spaces.
3. This option does not provide ramp access to parking bay dining area. Option is only feasible if alternate seating is available on the footpath.

Example 2 – ramp is required where there is no footpath dining



Axonometric view

Parking bay width min.
to accomodate ramp &
wheelchair circulation
2.7m



Typical plan

Legend

- Cafe table and chairs
- 6m long concrete jersey barrier
- Wheel stop
- Safekerb Supagrip Ramp
- Wheelchair circulation for 90 deg. turn (1.5 x 1.5m)

General notes

1. Dining furniture and layout of table and chairs must adhere to social distancing requirements.
2. Where footpath dining cannot be accommodated, parking bay dining must be made accessible with ramp access. To accommodate ramp and wheelchair circulation, 2.1m clear from the face of kerb is required and width of dining area will need to be greater than 6m to allow for two tables.

